

Abbot Point Operations

FACT SHEET

Abbot Point Operations (APO) helps deliver high-quality Queensland coal to the world through its safe, efficient, and responsible management of operations at the North Queensland Export Terminal (NQXT).

NQXT is located at the Port of Abbot Point, 25 kilometres north of Bowen, has a nameplate capacity of 50 million tonnes of coal per annum, and has been exporting Queensland coal since 1984.

APO prioritises the safety of everyone on this site and the protection of the surrounding local environment while creating jobs and supporting local community programs.



Supporting the community and economy of the Whitsunday region by providing employment for **>380 local employees and contractors**



Balancing the social, economic, and environmental aspects of the business to deliver for Queensland and Queenslanders



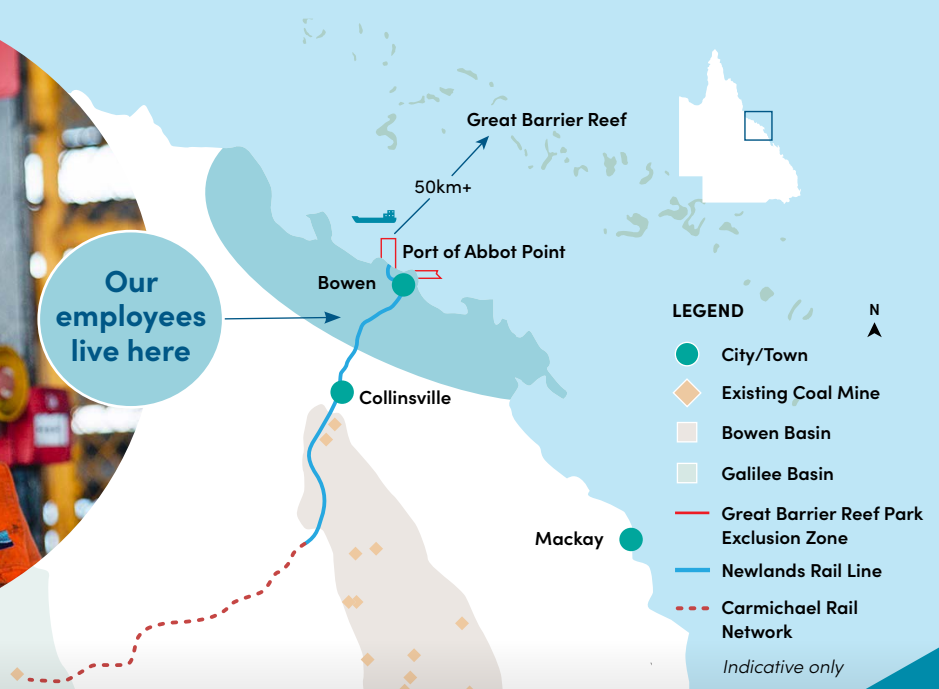
APO can unload up to **24 trains per day** and has a peak ship loading rate of **7,200 tonnes per hour**



Committed to the **highest standards of workplace safety** for everyone on site



Our employees live here



A safe and responsible operator

APO has the systems, people, and infrastructure in place to ensure the safe, responsible, and efficient operations of NQXT. With approximately 190 direct employees and a supporting workforce of local contractors, APO balances the social, economic, and environmental aspects of the Terminal's operations.

APO is dedicated to innovation and continuous improvement of its systems

and practices to help its people work safer, smarter and with great care for the local community and environment.

Ship movements in and out of the port are controlled by the Australian Maritime Safety Authority and Maritime Safety Queensland's Coastal Vessel Traffic Service and Reef Vessel Traffic Service (Reef VTS), using designated shipping channels.

1 Train in-loading

Coal is delivered to the terminal stockpiles via rail, with Abbot Point receiving an average of **400 trains per month**. Trains unload coal by bottom dumping wagons at one of two in-loading facilities on a balloon rail loop. Coal is moved from the unloading facility to the stockpile area by conveyor system.



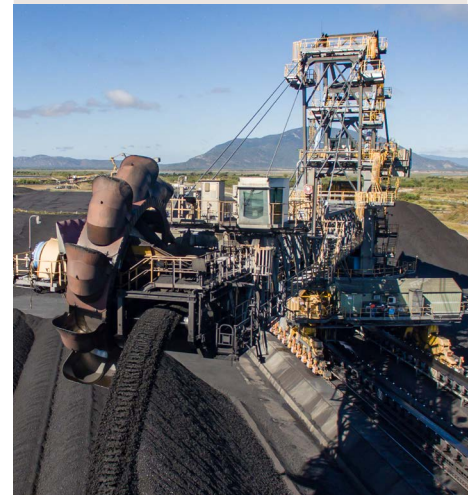
2 Stockyard

Coal is stored in stockpiles at the stockyard until it is ready to be shipped. The stockyard can hold more than two million tonnes of coal, arranged in **30 stockpiles** averaging **180 metres** long.



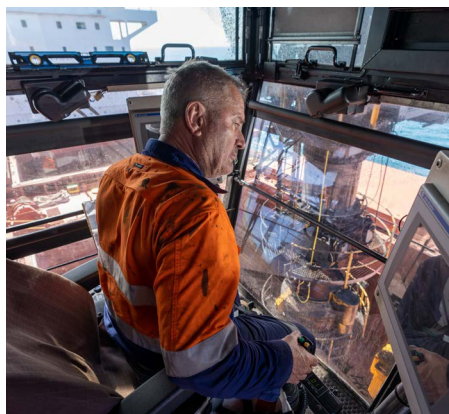
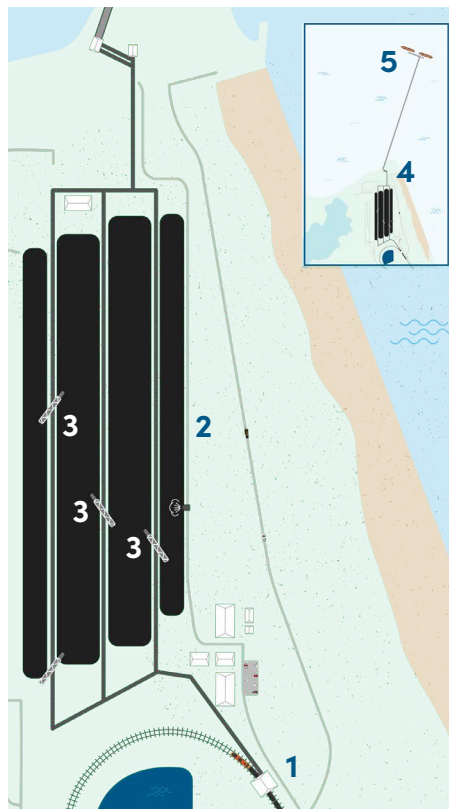
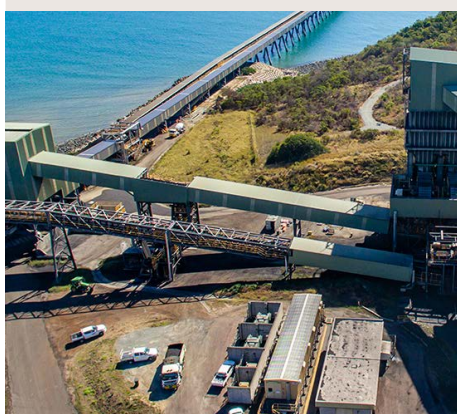
3 Stacker Reclaimers

Coal is blended to customer needs and reclaimed from stockpiles using the rotating bucket wheel on the stacker reclaimer. APO has **six stacker reclaimers** in operation.



4 Coal out-loading

When it is ready for loading, coal is moved from the stockpile to a large surge bin. From here it is carried by conveyor along the **2.75 kilometre** trestle jetty to the wharf and one of the two berths. Berth 1 is **252 metres** in length and Berth 2 is **268 metres**.



5 Ship loading facilities

APO operates two shiploaders, both with travelling gantry with luffing boom, to load coal into the ships' locked and sealed cargo holds.

Shiploader 1 has a peak loading capacity of **6,000 tonnes per hour** while shiploader 2 has a peak loading capacity of **7,200 tonnes per hour**.

Our environmental and community stewardship

Since the Terminal was built in 1984, the generations of people who work at the Terminal have demonstrated a commitment to safety, efficiency, responsibility, and partnership with the local community and APO is proud to continue this tradition.

APO is committed to the highest standards of environmental management and sustainability practices. APO has systems and monitoring programs in place to balance environmental responsibilities with operational activities to ensure the continued protection of the neighbouring Great Barrier Reef World Heritage Area and marine environment.

The settlement ponds for water from the port are home to a variety of wildlife and plant species.

APO undertakes comprehensive environmental monitoring to understand and protect the surrounding environment.



“APO is committed to the highest standards of environmental management and sustainability practices.”



APO's workforce of more than 380 employees and contractors live in the local area and many play an active role in fostering community wellbeing.



APO employees are hands-on in delivering our Community Support Program, as shown here with the annual school backpack initiative.