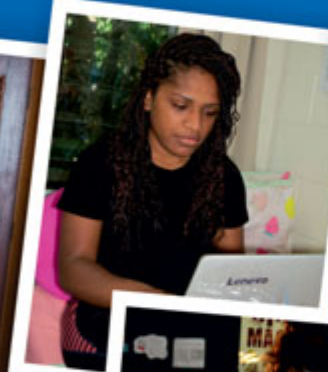




It's a great place to be!

Peace Excellence Scholarship for Indigenous Boarders

Quality Education... Christian Nurture... Community Service



www.plc.qld.edu.au



ACHIEVEMENTS

Graduation Success

Year 12 attainment among Aboriginal and Torres Strait Islander (ATSI) young people varies considerably depending on their location, ranging from 66.5 per cent in outer regional areas to 36.8 per cent in very remote areas.*

88%

That's how many Peace Lutheran College students who were enrolled in Year 10 in 2015, graduated Year 12 in 2017. The College has a strong retention rate amongst its ATSI students.

100%

Achievement by 2017 Graduates

Of the 7 ATSI students in this graduating year, all students achieved an outcome:

- All 7 students achieved a Queensland Certificate of Education
- 5 students were Queensland Aboriginal and Torres Strait Islander Foundation Graduates

100%

Achievement by 2016 Graduates

Of the 14 ATSI students in this graduating year, 14 students achieved an outcome:

- 14 students achieved Queensland Certificate of Education
- 9 students were Queensland Aboriginal and Torres Strait Islander Foundation Graduates
- 3 students sat the Queensland Core Skills (QCS) Test and received an Overall Positioning (OP) score



Cajun Darby, Year 10 – Frieden Boarding House

Boarding gives us lots of opportunities to learn and live together, to venture out and socialise which really helps us grow together as a group, always finding fun in what we do. There is a real connection with all the boys in Frieden House, just like family. Although many of us are from different backgrounds, the boys act as one, no matter where we come from, we are all brothers.



Peace Lutheran College has a reputation of success for graduating ATSI students. This is achieved through the College's superior pastoral care program; smaller class sizes to cater for students who require support and for those with English as a second language; Aboriginal and Islander Education Workers (AIEW) on staff to provide support and tutoring in classes; and additional support provided by the College Pastor, Counsellor and Guidance Officer.

Adding to the academic offering at the College, students also have the opportunity to complete Vocational Education and Training (VET) courses if they did not want to sit for an OP in their final year of schooling.

*Source: Closing the Gap Prime Minister's Report 2016, Dept of the Prime Minister & Cabinet

BOARDING

Scholarship Opportunities

Peace Lutheran College is a quality Christian co-educational Prep to Year 12 school in Cairns

The College is committed to encouraging well being and the pursuit of success and to develop young men and women of character in a Christian community. Developing the whole person is at the heart of the College, ensuring Peace is a place where everyone feels valued; a place where everybody is somebody.

Peace Boarding serves students from Cape York and Torres Strait, Western Queensland and other parts of Australia and overseas. The College prides itself on taking a holistic approach to the care of its boarding students. A balanced approach with a mix of academic, worship, sporting and social aspects are designed to help students reach their full potential.

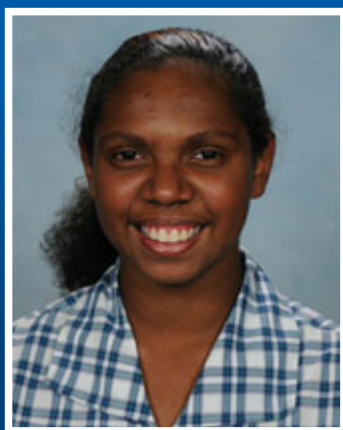
Dedicated House Parents live in each house and work hard to provide a "home away from home" feel to the dormitories.

Peace Excellence Scholarship for Indigenous Boarders

Peace Lutheran College (PLC) provides Boarding Scholarships of up to \$10,000 per year for Indigenous Boarding students who live in remote communities. The Scholarship covers school fees, stationery, uniforms, school shoes and a computer for senior students. The purpose of the Scholarship is to provide opportunities for appropriately qualified students who would not otherwise be able to attend boarding school for financial reasons. These scholarships are available for new student enrolments only.

- Scholarships will generally be offered at entry to Middle School (Year 7 or 8) or to Senior School (Year 10 or 11).
- Scholarship applications must be submitted by end of March for entry into the following year.
- Scholarship testing and selection occurs once per year at the end of Term 2. Scholarships are offered on the basis of an application, reference and the results of an academic scholarship test.
- Potential applicants need a minimum 'C' for all core subjects at their age appropriate level. The grade for 'Effort' and/or 'Behaviour' on current school reports needs to be at a minimum 'Good'.
- Current school attendance record needs to be 90% or higher.
- Applicants must demonstrate a positive attitude to studies and extra-curricular involvement. Scholarship recipients will be expected to maintain commitment to studies and make a significant contribution to boarding life at PLC.
- The decision to award a Scholarship is entirely at the Principal's discretion.

Applications are made via our website at www.plc.qld.edu.au, located under BOARDING.



Asheruhny Walker, Year 9 – Heiwa Boarding House

When I first came to board at Peace I felt scared and nervous, but coming to the College has been a good experience, even though it was hard to leave my family. I also wasn't used to having to be so independent. I've made great friends and they helped me settle in and feel happy, like I belong here. My house parent has been so supportive, showing me what I need to do, helping me with personal things and my school work. The best thing about boarding is meeting new people from different places and making new friends. One of my favourite things is game night. The best thing about being a student here is you have a good education and the teachers give you an easy way of understanding tasks. When I graduate school I would like to become a Lawyer because I always see things happening to innocent people and I also like fighting for people's rights. My studies here at Peace will help me become a Lawyer because we do speaking presentations and that will help bring my confidence up so I won't be scared to talk in front of people.



Culture

Indigenous Art



Achieving

Sports



Peace Lutheran College

50-60 Cowley Street, Kamerunga, Cairns

PO Box 72F, Freshwater QLD 4870

T: 07 4039 9000 | F: 07 4039 1623 | E: admin@plc.qld.edu.au

Like us on Facebook

CRICOS Provider No. 01260E

www.plc.qld.edu.au