

# Frederick Irwin Anglican School

A School of the Anglican Schools Commission (Inc)



## BYOD Platform Configuration Guide

(Mac OSX)

<b>Section:</b>	<b>Date Created:</b> 25/06/2013
<b>Number:</b>	<b>Approved by:</b> IT Department
<b>Version:</b> 0.1	<b>Review:</b>
<b>Pages:</b> 12	

## Table of Contents

<b>Introduction.....</b>	<b>1</b>
<b>Connecting to the BYOT Network.....</b>	<b>2</b>
<b>Installing and Configuring the VMWARE VIEW Client.....</b>	<b>3</b>

## BYOD Platform Configuration Guide

### Introduction

Frederick Irwin Anglican School has developed a Virtual Desktop Infrastructure (VDI) program to allow students and staff to bring their own computing devices to school, and access a standardised virtual desktop maintained by the school.

- Applications can be launched directly from a web browser on a user's computer running Windows, without requiring installation.
- If a problem occurs with the virtual desktop, it can be re-created in seconds, with no loss of user data.

Frederick Irwin Anglican School operates a wireless network for staff and students using their own technology to access school resources.

Follow the guide below for connecting to the wireless network and configuring the software.

## Connecting to the BYOT Network

1. Click on the Wireless Network icon in the Menu bar.

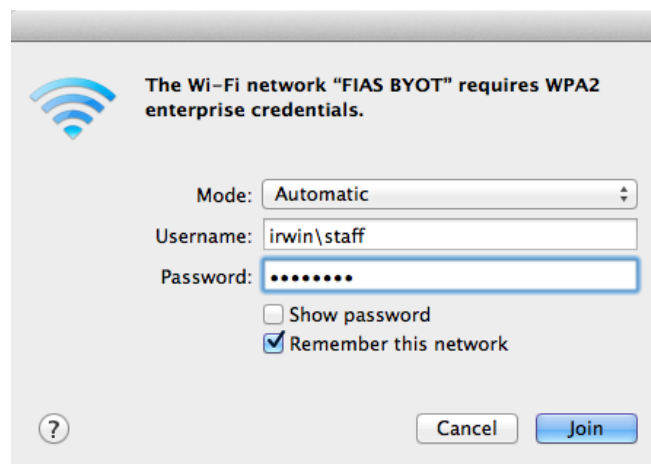


2. Select the FIAS BYOT Network.



3. Enter your network username and password in the format:

Username	Irwin\username
Password	<network password>

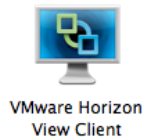


## Installing and Configuring the VMware View Client

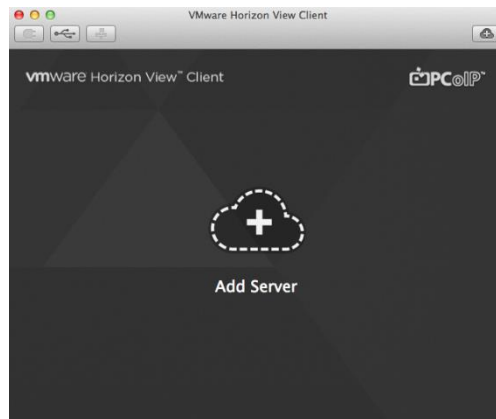
1. [Download the software for Mac OS X.](#)

*The software cannot be downloaded from the BYOT network. You must download the software from home before continuing with the installation.*

2. Launch the VMWare View application.

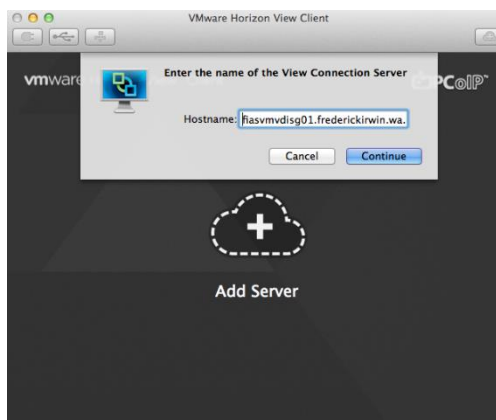


3. Click the Add Server button

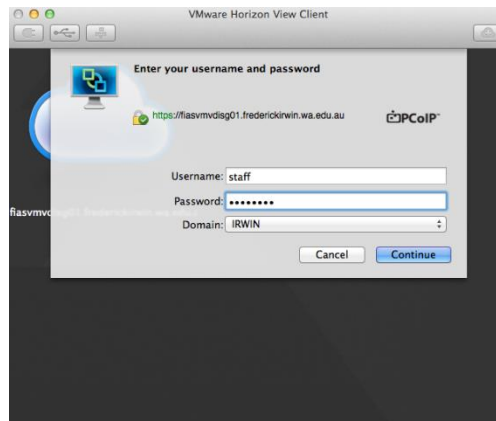


4. Enter the name of the connection server:

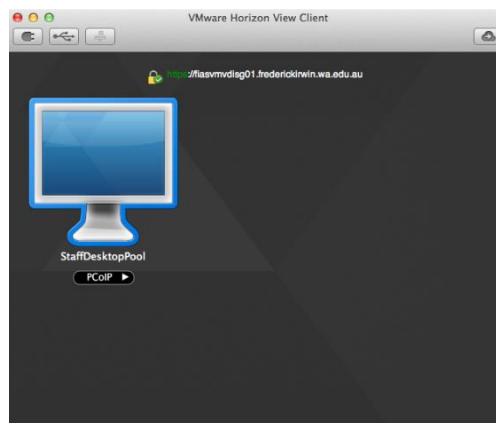
view.frederickirwin.wa.edu.au



5. Enter your user name and password, and click on the Continue button.



6. Select your desktop and click on the Connect button.



7. After a few seconds, your virtual desktop will be displayed.