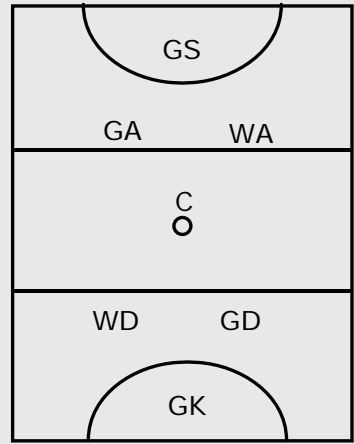


NETBALL POSITIONS

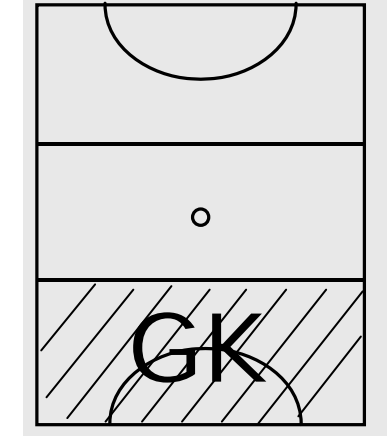
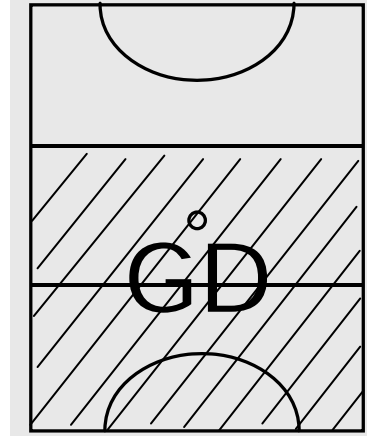
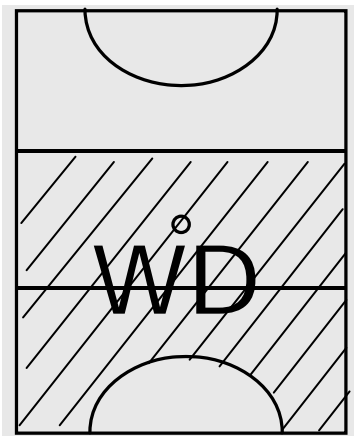
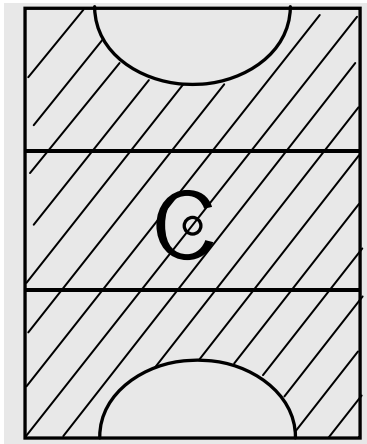
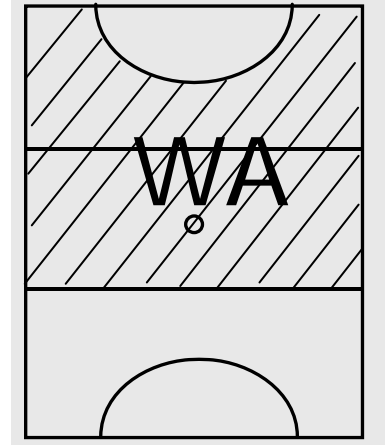
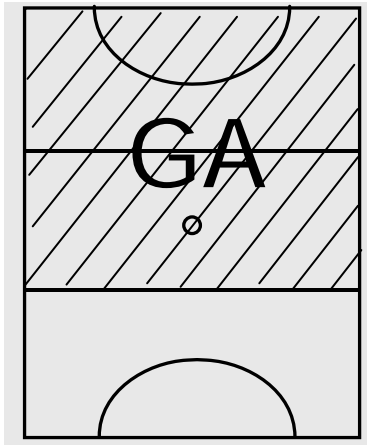
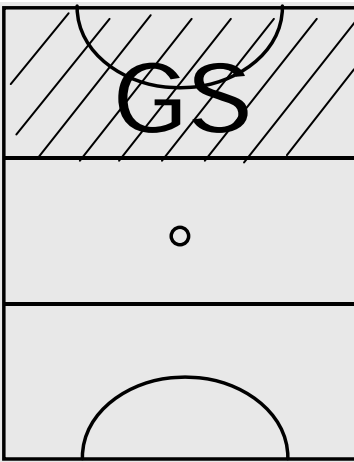


www.netskills.com.au



- GS - Goal Shooter
- GA - Goal Attack
- WA - Wing Attack
- C - Centre
- WD - Wing Defence
- GD - Goal Defence
- GK - Goal Keeper

The only players allowed in the Goal Circles are the players with a 'G' on their bib.

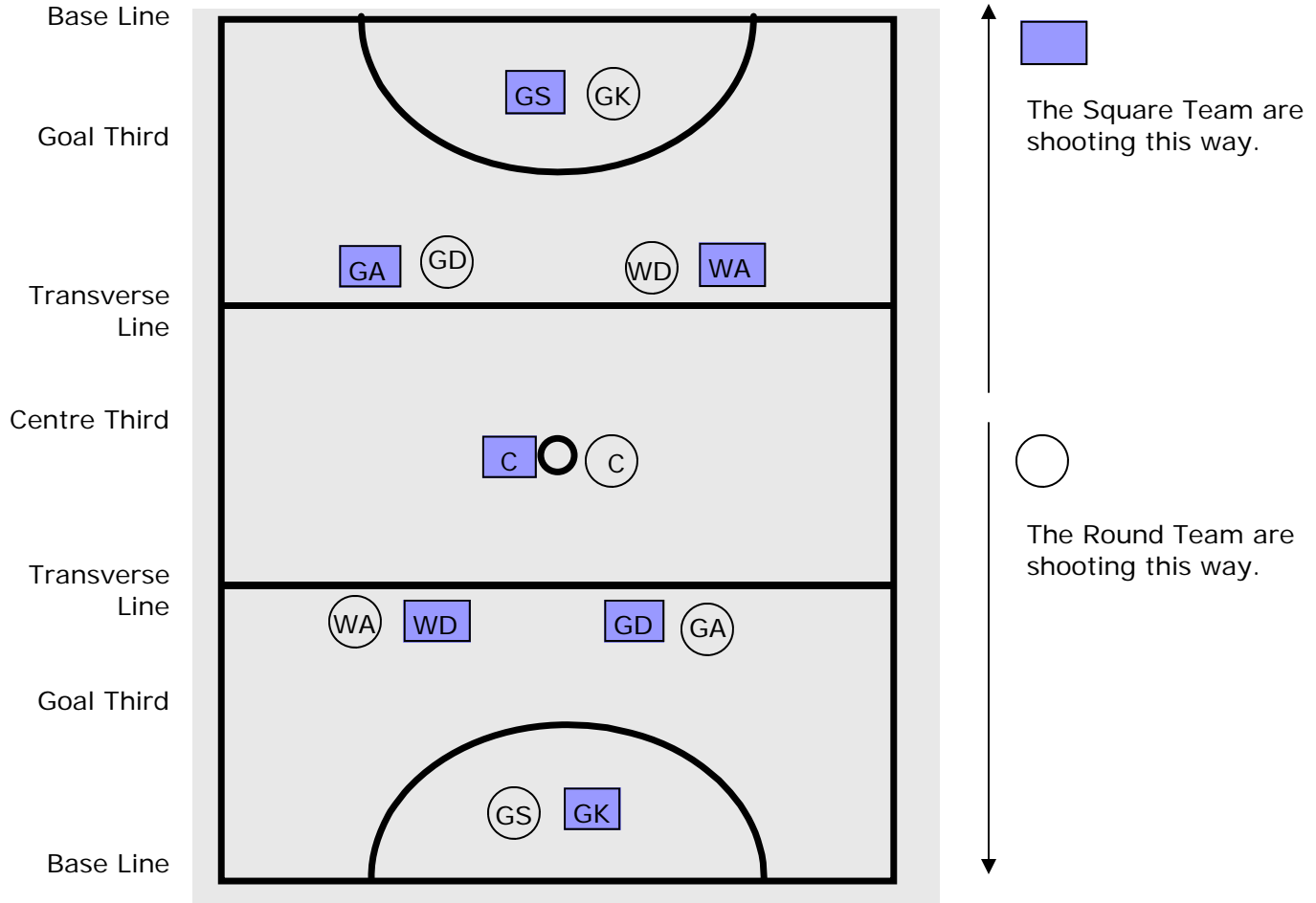


Who plays against who?

GS	against	GK
GA	against	GD
WA	against	WD
C	against	C
WD	against	WA
GD	against	GA
GK	against	GS



www.netskills.com.au



Centre Passes

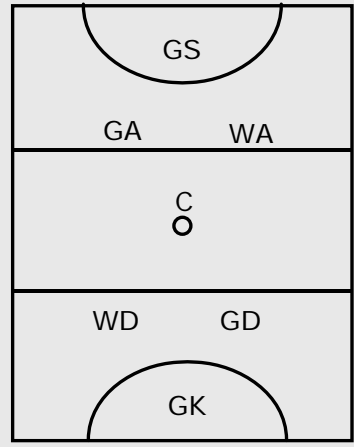
- The game starts with a Centre-Pass.
- After every goal, there is a Centre-Pass.
- At a Centre-Pass, all players, except the 'C', need to start behind the Transverse lines.
- The 'C' must pass the ball to someone who is in the Centre-Third.

NETBALL POSITIONS

Shade where each position is allowed.

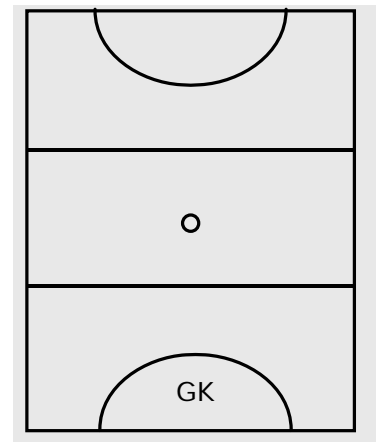
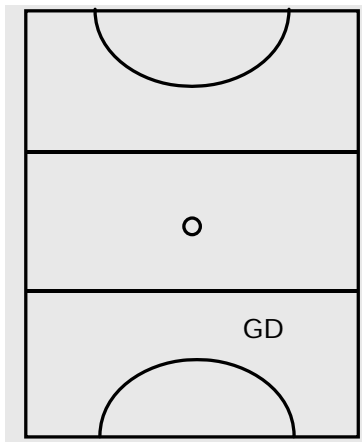
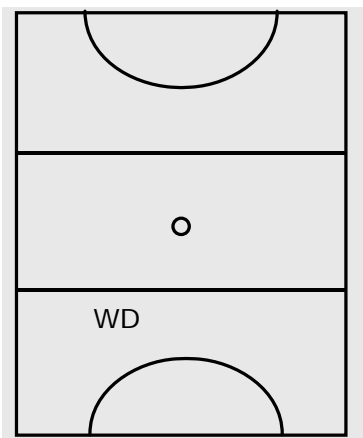
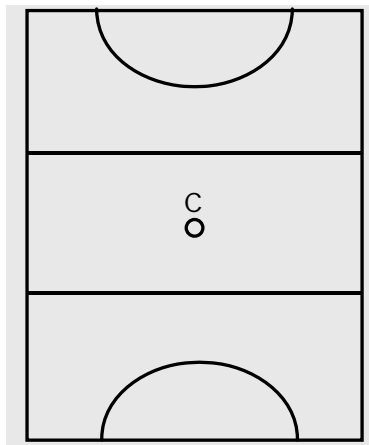
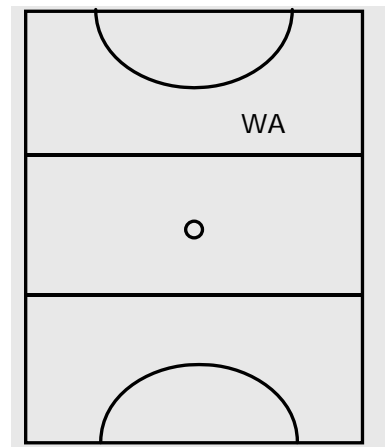
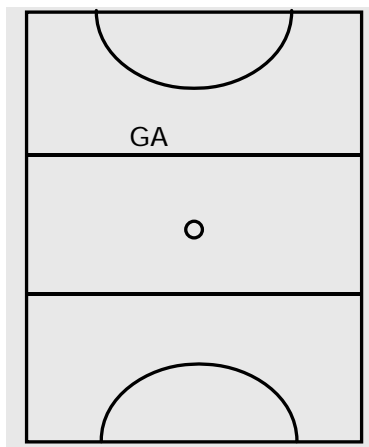
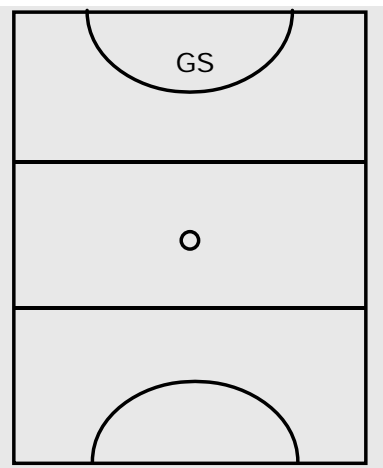


www.netskills.com.au



- GS - Goal Shooter
- GA - Goal Attack
- WA - Wing Attack
- C - Centre
- WD - Wing Defence
- GD - Goal Defence
- GK - Goal Keeper

The only players allowed in the Goal Circles are the players with a 'G' on their bib.



Who should take free passes or throw-ins

Defence Third - GK
Centre Third - WD or GD
Goal Third - C or WA
Goal Circle - GS or GA

