

6. Safety Instructions

- 1) Do not leave appliance on when not in use for a long time.
- 2) Do not use this appliance near water.
- 3) To prevent risk of electric shock do not immerse this appliance in any liquid.
- 4) Do not touch any metal part of the outer surface when in use as it may reach a high temperature.
- 5) Improper handling can lead to malfunction of the appliance and injuries.
- 6) Do not use outdoors.
- 7) Do not use appliance near an open flame or other cooking or heating appliances.
- 8) Do not operate after cord or malfunction damage.
- 9) Do not attempt to repair, adjust or replace parts in this appliance.
- 10) Keep the cord away from sharp edges and hot surfaces.
- 11) Do not pull, twist or wrap the power cord.
- 12) Do not move the appliance until it cools down completely.
- 13) Do not cover the toaster during operation.
- 14) Do not insert bread that is too thick for the toasting slots.
- 15) Never use sharp objects or remove sliced bread.
- 16) The toaster is not intended to be used by children or persons lacking experience and knowledge of using hot surface appliances.
- 17) Children have to be supervised.
- 18) The outer surface can be cleaned with a soft damp cloth without using corrosive cleaners, use only dry cloths for the control switches.



NERO 4 SLICE STAINLESS STEEL COMMERCIAL TOASTER

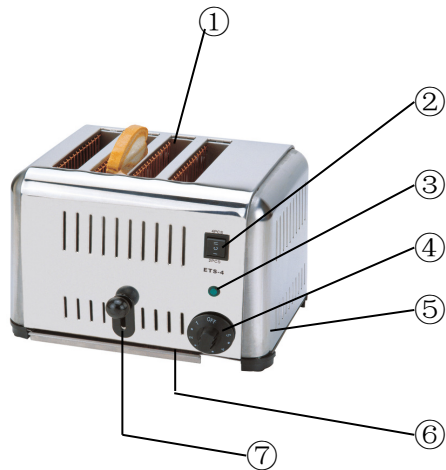


Code 746090 INSTRUCTION MANUAL

1. Important Safeguards

Before using the toaster for the first time please clean the appliance. Switch off, unplug and allow for cooling before moving or storing the toaster. Turning off the toaster can be done by turning the timer dial to OFF (4). Toasting will automatically stop when the timer dial cycle is reached (4).

2. Features



Product Code No.746090

- ① The toast slot
- ② The slice control switch
- ③ The power indicating light
- ④ The timer dial
- ⑤ The toaster body
- ⑥ The toast tray
- ⑦ The bread lifter

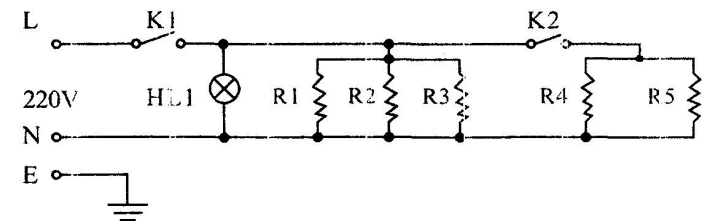
3. Using the Toaster

Plug in the toaster, insert bread slices into the slots①. Press the slice control switch② to choose 2 or 4 bread slices to be toasted at one time. Set the time dial ④, the power indicating lamp③ will turn on, activating the toaster. When you hear the bell ring from the time dial the toasting cycle is complete. Press the bread lifter⑦, the toast pops up out of the slots.

4. Specifications

Product No.	746090
Name	4-Slice Toaster
Rated load(V)	220-230V
Rated power	1.8(1.1/1.8)KW
Time of work	0-5 minutes
Slots number	Four pieces
Dimension	330×285×250mm

5. Circuit diagram



K1 - The time dial

K2 - The slice control switch

HL1 - The power indicating light

R1~R5 - The electric thermal plate