



**PACIFIC MARINE GROUP** PTY LTD  
AUSTRALIA

# Capability Statement

[pacificmarinegroup.com.au](http://pacificmarinegroup.com.au)







## Contents

04 Introduction	26 Salvage
06 Company Overview	28 Moorings
08 Marine Construction	30 Mackay Shipyard
14 Marine Structure Demolition	32 Equipment – Tugs / Supply Vessels
16 Marine Support & Vessel Charter	34 Equipment – Barges
18 Project Logistics	36 Equipment – Work Boats
20 Commercial Diving	39 Equipment – Ancillary
24 Scientific Diving & Artificial Reefs	



"To be recognised as the best provider of a range of marine contracting and commercial diving services in Queensland and the Pacific Rim."

Our Mission Statement

## Introduction

Pacific Marine Group is a leader in the Marine Contracting and Commercial Diving industries. Based in North Queensland, and operating for in excess of 30 years, PMG has an enviable track record of achievements throughout Northern Australia, Papua New Guinea and the Pacific. Clients range across many sectors including resources, ports, tourism, construction, marine parks, various public sector departments and more.

With its main base in Townsville, PMG offers the following services::

- Marine Construction / Demolition
- Dredging
- Tug and barge services
- Marine Plant / Vessel Hire
- Commercial Diving
- Towage
- Salvage
- Fender / Brow Hire
- Fabrication
- Mooring Installation
- Artificial Reefs

All works are undertaken in accordance with externally accredited systems and relevant legislation, as well as with a sense of pride and professionalism that go hand in hand with a successful and progressive contracting company. An extensive portfolio of insurances are in place to provide peace of mind to clients.



# Company Overview

## Our Aim

It is the objective of the company to be the preferred supplier of marine construction, commercial diving, and commercial vessel charter services in Australia and the Pacific Region. We have over 30 years of experience in these fields and as the company has grown, so have our management systems. Our team of dedicated professionals have decades of experience in our specialised field of work, and to support our people, plant and facilities, we have internationally accredited Quality, Safety and Environmental Management Systems. These systems are 3rd party audited and certified to ISO9001, ISO 14001 and ISO 45001. We also hold Australian Government Building and Construction WHS accreditation through the Office Federal Safety Commission (FSC).



## Our People

Our dedicated team of professionals incorporates Engineers and Project Managers, Management and Supervision, Safety and Quality staff, Admin and Finance / Commercial staff, Mariners, Boilermakers, Fitters, Commercial Divers, Blasters and Painters, Electricians, Cranes and logistics and labouring teams. We run an award winning apprenticeship and trainee program at PMG, and have been awarded

Employer of the Year a number of times at the Qld Training Awards, and have nurtured a number of Apprentice of the Year recipients.

Team size is typically around 120 employees, but can increase to up to 180+ when larger projects are running.

## Our Marine Facility

Pacific Marine Group operates out of a purpose built waterfront marine facility located at the mouth of Ross River in Townsville. The facility has over 400m of deep water frontage available for barge and vessel loading and storage, and over 20,000m<sup>2</sup> of hardstand available for project storage, project component assembly, or bulk materials stockpiling prior to barge loading. We have a 3,000m<sup>2</sup> office and workshop complex onsite. This building was designed and built by PMG to suit our operations perfectly. It incorporates our office and management department, our fabrication department, our fitting department, our commercial dive department, and our stores department. We also have a fully compliant blast and paint facility on site. We typically have numbers of cranes available to unload trucks and load barges or vessels, ranging from Frannas to 200t crawler cranes.

In addition to the Townsville marine facility, we own and operate a dedicated slipway in Mackay which has been servicing the region for 20+ years. The slipway can accommodate vessels up to 60m long and 600t.







Main Image Piling Amrun project, Weipa Opposite Installing navigation aids, Papua New Guinea

## Marine Construction

Pacific Marine Group has a long history of completing complex, one-off remote marine projects. We are comfortable completing these projects both in Australia and the Pacific Region, for a wide range of clients from Government Departments to Tier 1 Head Contractors to smaller private organisations.

We have been steadily building our reputation for delivering quality and cost competitive marine construction projects in the Pacific in recent years, and our recent signing of a Deed of Standing Offer with the Department of Foreign Affairs (DFAT) for infrastructure project delivery in the Pacific, demonstrates both our reputation in and commitment to the Pacific region.

Our extensive vessel fleet and experienced project team, coupled with our modern marine facility and in-house design and fabrication, fitters, blasters and painters and electricians, means we can configure barges

and tugs to exact project requirements, in a very timely fashion, with minimal reliance on outside contractors. Our Construction Team and Project Managers are experienced in most forms of marine construction, and all projects are completed in accordance with our Quality System.

Projects typically undertaken include:

- Navigation Aid
- Fabrication / Installation / Maintenance
- Piling works
- Wharf / jetty construction
- Marine Structure Demolition
- Site blasting / painting / pile wrapping
- Dredging
- Subsea pipeline construction
- Mooring installation
- Artificial Reefs







**Main Image** Abbot Point materials off loading facility (MOF) design & construction

**Thumbnails** 1. Remote area navigational aid refurbishment, Hydrographers Passage 2. HDPE pipeline install Hamilton to Dent Island, Whitsundays 3. Epoxy pile splinting at Weipa for Rio Tinto 4. Dredging, Port of Townsville 5. Installing navigation aids, Papua New Guinea 6. Townsville berth 10 expansion 7. 1.2m diameter steel pipe outfall, Cleveland Bay 8. Subsea power cable – Magnetic Island





**Main Image** Berth 10 extension – Port of Townsville **Thumbnails** 1. 900mm diameter HDPE pipe outfall, Port Moresby 2. 1.2m diameter steel pipe outfall, Cleveland Bay 3. 5km long 550mm diameter HDPE buried water pipeline, Townsville to Magnetic Island 4. Piling Amrun project, Weipa





Main Image Berth 6/7 demolition, Townsville Port    Thumbnails 1. South Molle Island jetty demolition (Shute Harbour)  
2. Loves Jetty demolition, Mackay Port    3. Berthing Dolphin demolition, Weipa    4. Lucinda Jetty partial demolition

## Marine Structure Demolition

The demolition of Marine Structures has evolved to core business for Pacific Marine Group in recent years.

We have developed innovative equipment and procedures to enable all manner of Marine Structures to be demolished safely, efficiently, cost effectively, and in an environmentally responsible manner.

All marine demolition projects are different, and Pacific Marine Group have the ability to reconfigure barges and other floating plant, to suit the exact job.

All demolition jobs are completed in accordance with our accredited ISO 9001: 2015 Quality System, AS/NZS 4801:2001 Safety Management System, and AS/NZSISO14001:2015 Environmental Management System.

Demolition capabilities include:

- Concrete deck removal by saw cutting / diamond wire cutting
- Concrete deck removal by hydraulic shears - reduction to rubble, full capture of rubble
- Pile extraction – various methods including vibrohammer, jetting, driving oversleeve etc.
- Pile cutoff above / below water
- Seabed cleanup by diving / dredging
- Timber structure removal







We have a large fleet of vessels and barges available for charter

## Marine Support & Vessel Charter Services

Core business for Pacific Marine Group is, the supply of marine plant – typically flat top barges, tugs, work boats, dive support vessels, and crew transfer vessels, both crewed and non-crewed, for projects including but not limited to:

- General tug and barge charters
- Construction
- Towage
- Dredging
- Dive support
- Buoy Deployment
- Accommodation and project support
- Ship resupply/repairs
- Navigation Aid repair/deployment
- Salvage
- Geotechnical drilling/sampling
- Marine Research



**Main Image** Wreck Hydrocarbon removal, Micronesia (PMG Pride) **Top Left** Helicopter Resupply for PMG Pride, Coral Sea. **Above 1.** Buoy deployment / servicing (PMG Pride) **2.** Tug and barge beach landing **3.** PMG Pride **4.** Barge beach landing, Willis Island (PMG121) **5.** Great Barrier Reef Moorings **6.** Tug and barge tow



## Project Logistics

PMG specialises in project logistics – getting project cargo to where it needs to be. We offer:

- Heavy roll on/roll off (RORO) barge services
- Use of our marine facility – hardstand for project laydown / crane pad / barge ramp
- Craning and loading of barges
- Cargo sea fastening installation
- Lashing design and tow surveys
- Barge reconfiguration to suit project needs – sidewalls / doors / winches etc.
- On site steel module repairs / paint repair prior to shipping



**Main Image** Stacker reclaimers loading, Port of Townsville **Thumbnails** 1. Roll off, Half Tide tug harbour 2. Stacker reclaimers slew deck/C-frame 3. Ship to barge loading, Mackay Port 4. Willis Island barge delivery 5. Heavy Roll on, Port of Townsville 6. Tug and barge gravel & plant delivery





Our commercial diving division is able to support complex, remote, large scale diving programs.

## Commercial Diving

With over 30 years of experience, our company has become an industry leader in the Australian Commercial Diving field. We have extensive experience in running complex, remote, large scale diving campaigns, but are equally comfortable running smaller scale dive campaigns. Commercial diving in the modern workplace is a highly regulated and highly controlled activity. Our approach to the activity is highly professional, with a focus on safety,

client requirements, and responsiveness. We carry an extensive suite of insurances that are applicable to all our diving activities, including \$50M Public Liability, and Workcover for all employees.

### Compliance

Pacific Marine Group performs all dive work in accordance with AS/NZS 2299.1:2015 Standard for Occupational Diving, and all dive personnel are trained to ADAS Part 2 or higher levels, in accordance with AS 2815.

### Water Inspection Certifications

We carry in water inspection certifications from all major shipping class societies including Det Norske Veritas, Nippon Kaiji Kyokai, Lloyds Register, Germanischer Lloyd, American Bureau of Shipping, and Bureau Veritas. We also carry GBRMPA permits to allow propeller polishing off Hay Point / Dalrymple Bay.

All dive projects are supported by Pacific Marine Group's experienced team of Project Managers, Marine Crew, Fabricators, Fitters and Technicians.

Typical works carried out include:

- Underwater construction
- Class society In Water Inspections
- Underwater cutting and welding
- Large scale underwater inspection campaigns for offshore and onshore facilities – wharves / jetties / export facilities / offshore platforms
- Non-Destructive Testing
- Contaminated water diving
- Seabed surveys
- Propeller polishing
- Oilfield / Offshore Inspection / Maintenance
- SPM maintenance, floating hose change-outs
- Ship repairs
- Pipeline inspections and repairs
- Salvage
- Geotechnical drilling/sampling
- Marine Research





## Commercial Diving

**Main Image** Anode installation for BMA, Hay Point. Close Visual and General Visual Inspections, Video Survey, Cathodic Protection Measurements, Ultrasonic Thickness Measurements  
**Left 1 & 3.** Underwater inspection and repair program in Weipa on the Mission River Bridge for Rio Tinto. Up to 20 divers per campaign over a 15 year period. **2.** Denso installation **4.** Pile inspection repair from remote vessel (Lisa Lee) crocodile protection cage **5.** ROV (Remote Operated Vehicle) top-side setup **6.** Predator cage diving, Weipa **7.** Underwater welding **8.** Underwater Broco cutting SPM (Single Point Mooring), Kumul Platform PNG **Right Image** Hay Point HPX3 project diving.





**Main Image** PMG Odyssey at anchorage, John Brewer Reef – Crown of Thorns Starfish Control Program  
**Thumbnails** 1. PMG Odyssey 2 & 3. Crown of Thorns Starfish control 4. Coral relocation, Papua New Guinea  
 5. Stradbroke Island Artificial Reef Installation 6. Loading up for Tweed Heads artificial reef job  
 7. Precasting "Arrowhead" modules in PMG's yard, Townsville 8. PMG "Arrowhead" module after 2 years  
 underwater, Stradbroke Island 9. Coral relocation, Papua New Guinea 10. Museum of Underwater Art  
 installation, Great Barrier Reef

## Scientific Diving & Artificial Reefs

Pacific Marine Group has moved into the ever expanding field of artificial reefs. These are increasingly popular for enhancing recreational fishing & diving opportunities. Pacific Marine Group has developed inhouse our unique "Arrowhead" precast concrete reef module, which can be customised to suit various fish species & environmental conditions. The reinforced concrete modules are 5m tall, 4m square in base and weigh approximately 17T each.

Steel modules are also able to be custom designed, built and installed. We are also experienced in underwater art projects, including the recently completed "Museum of Underwater Art" project on the Great Barrier Reef.

Our Crown of Thorns Starfish (COTS) Control Program for GBRMPA is successfully delivering results on high value reefs between Townsville and Mackay.

The aim of the program is to reduce COTS densities to allow for coral growth to outpace COTS feeding capacities, as well as undertaking reef Surveillance, Reef Health Impact Surveys and supporting research activities.





# Salvage

Pacific Marine Group has been salvaging vessels and removing wrecks from the marine environment since the company began over 30 years ago. We have completed complex salvages in up to 50m of water, in all sorts of environments from pristine reef waters to muddy mangrove systems.



**Main Image** Plane Salvage, Norfolk Island **Thumbnails** 1. Timber 28m ketch salvage 2. 34m steel long liner salvage 3. 20m fibreglass cruiser removal 4 & 5. Hydrocarbons removal from longliner, Eauipic Atoll 6. 34m steel vessel removal, Whitsunday Islands 7. Timber 28m ketch salvage





**Main Image** Grouted Screw Mooring (GSM) installation on the Great Barrier Reef **Thumbnails** 1. GSM being installed 2. GSM ready for Riser to be installed 3. GSM core steel with concrete yet to be added 4 & 5. Cyclone Moorings being installed at Hay Point and Abbot Point **Illustration** GSM layout sketch

## Moorings

### Cyclone Moorings

Pacific Marine Group is experienced in cyclone mooring installation, maintenance, and removal where required. We have completed a number of large scale cyclone mooring projects, typically for large scale dredging and construction projects, using anchors in the 2T – 8T range, and chains in the 40mm – 80mm size.

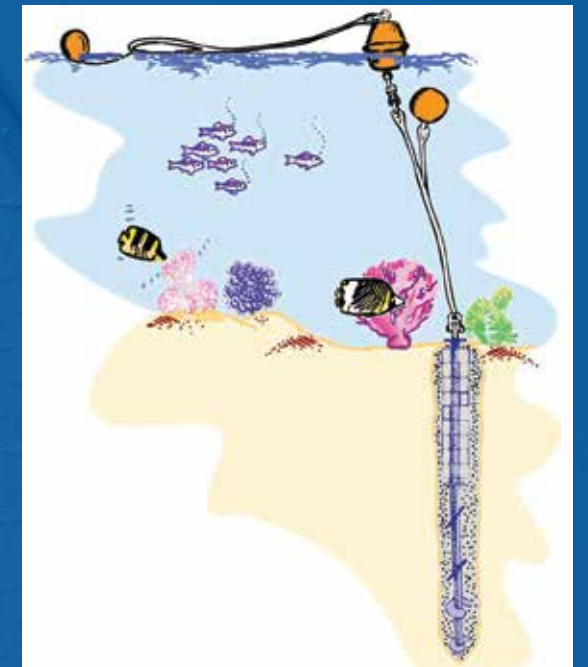
### Grouted Screw Moorings

In addition to cyclone moorings, Pacific Marine Group has developed an eco-friendly Grouted Screw Mooring (GSM) system. The system has been developed in conjunction with James Cook University and an international patent is held by Pacific Marine Group for this system. Over 300 GSM's have been installed along the Great Barrier Reef, Whitsunday Islands, Rowley Shoals (WA), Ashmore Reef (WA) and as far as Hawaii.

### Grouted Screw Moorings Installation Process

Divers use an underwater drill rig to screw a 4m long screw shaft into the seabed. As drilling occurs, grout is pumped out through the lead

helix (tip), resulting in a 4m deep, 600mm concrete column. Once the concrete is set, a pad eye is bolted on and the rigging attached. The system is typically used for vessels up to 35m / 300T, but larger vessels can be accommodated with the use of "Tri" moorings. Essentially three GSM's linked together with a common pad eye.





## Mackay Shipyard

Pacific Marine Group own and operate Mackay Shipyard. This slipway has been servicing the Mackay and Whitsunday region for over 20 years. The slipway can accommodate vessels up to 600T, 50m long and typically up to 18m beam.

Services include:

- High pressure water wash-down
- Abrasive blasting with garnet
- Ultra high pressure water blasting
- Airless spray painting including removal and application of antifouling
- Hull repairs in steel, aluminium and timber
- Fitting and machining work on shafts, stern gear, engine room machinery, deck equipment, etc.
- General steel and pipe-work
- Tradesmen and labour for afloat repairs
- Full range of underwater services including repairs, class and insurance surveys, etc.





# Equipment - Tugs/Supply Vessels

Tugs / Supply Vessels



## 'PMG Emerald'

Utility vessel for offshore support operations  
41.8m length, 10m beam, 2 x 1400 HP, 10 knots,  
Bollard pull 36.5T, 90T brake capacity towing  
winch/36T line pull, 20 beds



## 'PMG Pride'

Utility vessel for offshore support operations  
34m length, 8.5m beam, 2 x 550 HP, 10 knots,  
Bollard pull 15T, 15T tow winch, 10T A-frame, 20 beds



## 'PMG Tarka'

Damen 2609 Tug for coastal support operations  
26m length, 9m beam, 2 x 1100 HP, 10 knots,  
Bollard pull 30T, 50T towing winch. Removable  
Damen dredging ploughing system 25T Aframe



## 'Black Panther'

Utility vessel for offshore support operations  
24m length, 7.8m beam, 2 x 600 HP, 10 knots,  
Bollard pull 15T, 20T towing hook, 8 beds



## 'PMG Sailfish'

Harbour tug for various coastal support operations  
16m length, 6m beam, 2 x 499 HP, 8 knots,  
Bollard pull 13T, 15T towing hook, 6 beds



## 'PMG Swordfish'

Harbour tug for various coastal support operations  
16m length, 6m beam, 2 x 499 HP, 8 knots,  
Bollard pull 13T, 15T towing hook, 6 beds



## 'George Doyle'

14m Catamaran Work Boat, 2x Cummins 355 HP,  
dive support, crew transfer, hydrographic survey



## 'PMG Odyssey'

Expedition style aluminium catamaran  
24m length, 2 x 420 HP, 3T crane, 2x 5.5m tenders  
high quality fitout, 26 beds



## Project Vessels

Vessels not currently in our fleet are able to be sourced on a project basis



## Project Barges

Barges not currently in our fleet are able to be sourced on a project basis



# Equipment - Barges

Barges



## 'PMG183W'

Flat top deck cargo barge for offshore operations  
54m x 21m, 15T/m<sup>2</sup> deck rating, bow door & side walls available



## 'PMG182'

Flat top deck cargo barge for offshore operations  
55m x 18m, 15T/m<sup>2</sup> deck rating, winches available to 20T line pull, bow door & side walls available



## 'PMG123'

Steel deck cargo barge, offshore support operations  
36m x 12m, 10T/m<sup>2</sup> deck rating, sister ship to PMG 122, bow door & side walls available



## 'PMG122'

Steel deck cargo barge, offshore support operations  
36m x 12m, 10T/m<sup>2</sup> deck rating, bow door & side walls available



## 'PMG181'

Flat top deck cargo barge for offshore operations  
55m x 18m, 15T/m<sup>2</sup> deck rating, winches available to 20T line pull, bow door & side walls available



## 'PMG151'

Flat top deck cargo barge, offshore operations, 45m x 15m, 15T/m<sup>2</sup> deck rating



## 'PMG121'

Heavy duty construction barge, offshore operations  
36m x 12m, 20T/m<sup>2</sup> deck rating, towing brackets 6 x mooring bollards, bow door & side walls available



## 'Sheerlegs'

Crane barge for various offshore support operations  
24m x 13m, 75T American pedestal crane, 8m<sup>3</sup> bucket, bow door & side walls available



## 'PMG150'

Flat top deck cargo barge, offshore operations, 45m x 15m, 10T/m<sup>2</sup> deck rating, 180T crane pad strengthening bow door, side walls & 20T line pull winches available



## 'PMG124'

Flat top deck cargo barge for offshore operations  
36m x 12m, 15T/m<sup>2</sup> deck rating, winches available to 20T line pull, bow door & side walls available



## Road Transportable Barges 14m

14m x 3.5m barges (two available)  
Able to be bolted together



## Road Transportable Barges 12m

12m x 3m x 1.2m barges (four available)  
Able to be pinned together



# Equipment - Workboats



## Construction Punts / Dinghies

Numerous shapes, sizes and specifications



## 'Dive Punt'

6m dive / work punt, 115hp Yamaha outboard



## 'Samsson 2'

Work Punt 7.5m, 1x 80 HP Yamaha outboard



## 'PMG Catfish'

Work Boat 7m cat., 2x Suzuki 140 HP outboards, crew transfer, dive support, barge handling



## 'Titan'

Work Boat 7.5m, 2x 140 HP Suzuki outboards



## 'Harry Jon'

Work Boat 10m, 2x 200 HP Honda outboards, crew transfer, dive support



## 'Lisa Lee'

Work boat for various coastal support operations 11.3m, 1x 250 HP, coastal services, dive support and small mooring, accommodation for 3 in 1 cabin



## 'PMG Pusher'

Work boat for various coastal support operations 5.5m, 1x 150 HP Honda outboard, barge handling and marine support



## Vibro Hammers

ICE44B | ICE416 | ICE23RF  
Vibro Hammers



## Junttan Hammers

HHK 10/12/14S | HHK 7/9A  
or hired as required



## Hydraulic Impact Hammer

Dawson HPH4500 double-acting



## Piling Drop Hammers

3T & 7T / 1.2m stroke



## 3 Gate Piling Frame

Up to 1200mm diameter



## 2 Gate Hydraulic Piling Frame

450mm – 1200mm pile diameter



## 2 Gate Hydraulic Piling Frame

450mm – 1000mm pile diameter



## 80T, 100T & 150T Crawler Cranes

80T 100T 150T Sany Crawler Cranes



## 180T Crawler Crane

180T Kobelco Crawler Crane



# Equipment - Ancillary



**Yokohama Fenders**

Typically 6m long x 3m diameter



**Cyclone Moorings**

Complete moorings for hire or sale



**Complete Anchor Winch sets**

15 / 20T line pull, fairleads, control panels, silenced hydraulic packs to suit requirements



**20T Excavators**

Komatsu 20T excavators



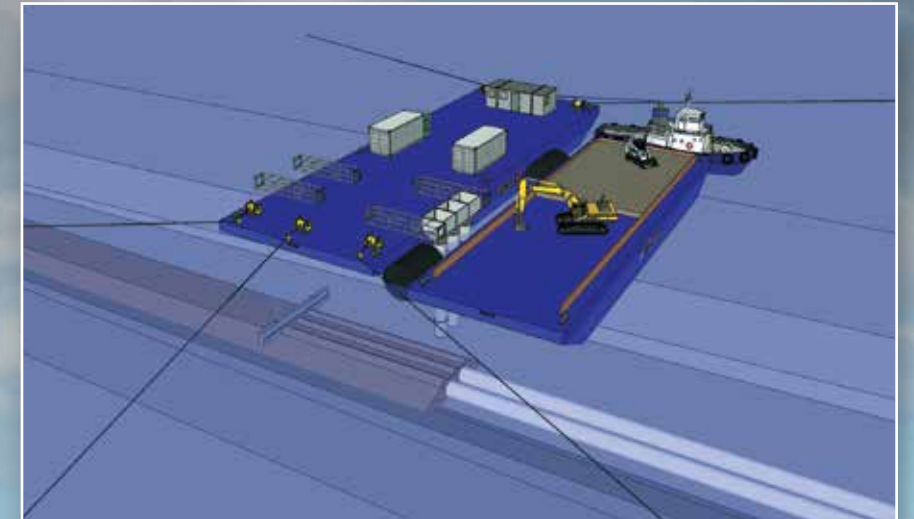
**Anchors 2T – 6T**

Flipper Delta and other configurations



**14T & 25T Cranes**

14T & 25T Franna Cranes



Main Image Twin 1200mm gas pipeline rock protection installation, Narrows Crossing Gladstone  
Top 3D mockup illustrating installation process and pipeline cross section





## Pacific Marine Group

11-15 Sandspit Drive South Townsville | PO Box 1155 Townsville Queensland 4810 Australia  
Phone +61 7 4724 2200 | Fax +61 7 4724 2208 | [info@pacificmarinegroup.com.au](mailto:info@pacificmarinegroup.com.au)

Towage & Barges | Commercial Diving | Marine Construction | Vessel Hire