



ROUSE HILL ANGLICAN COLLEGE PROSPECTUS





WELCOME....

ROUSE HILL ANGLICAN COLLEGE IS AN INDEPENDENT CHRISTIAN SCHOOL SITUATED IN ROUSE HILL IN SYDNEY'S NORTH-WEST. IT IS AN ANGLICAN CO-EDUCATIONAL SCHOOL FOR STUDENTS FROM KINDERGARTEN TO YEAR TWELVE.



The College was established in 2002 and has grown rapidly in line with population growth in the local area. In its short history, it has established a reputation for pastoral care, academic excellence and the development of the individual potential of students.

The College motto, 'Understanding Through Christ', emphasises the Christian foundation of the College and our reliance on the teachings of Christ to provide direction and purpose for our lives.

Rouse Hill Anglican College is a member school of the Sydney Anglican Schools Corporation.



- STRONG STABLE CHRISTIAN ETHOS
- CARING ENVIRONMENT WHICH VALUES THE INDIVIDUAL
- HIGH ACHIEVEMENT IN TRADITIONAL TEACHING AND LEARNING
- EXCELLENCE IN TEACHING AND LEARNING
- FIRM AND FAIR DISCIPLINE
- DEVELOPMENT OF STUDENTS WITH HIGH ETHICAL STANDARDS AND SELF DISCIPLINE
- DEVELOPMENT OF INDIVIDUAL STUDENT POTENTIAL
- CHARACTER AND LEADERSHIP POTENTIAL





MISSION

ROUSE HILL ANGLICAN COLLEGE: CHRISTIAN, CARING AND DYNAMIC; PROVIDING EXCELLENCE IN EDUCATION, EMPHASISING HIGH ACADEMIC STANDARDS AND THE DEVELOPMENT OF INDIVIDUAL POTENTIAL.

The College provides a co-educational program for students from Kindergarten to Year Twelve.

An open enrolment policy exists at the College. Parents need not be Anglican, but must be supportive of the College's Christian philosophy and principles.

VISION

STUDENTS AT ROUSE HILL ANGLICAN COLLEGE WILL BE GIVEN AN EDUCATION THAT IS RELEVANT TO THE PRESENT AND WHICH PREPARES THEM TO BECOME SUCCESSFUL, CONTRIBUTING MEMBERS AND LEADERS OF THE COMMUNITY.

Our students' education seeks to equip them to accept responsibility, to take initiative and to show sensitivity to the needs of others. It will offer them stimulation to develop intellectual curiosity, to solve problems, to think creatively and logically, and to work co-operatively.

PASTORAL CARE



There is a strong emphasis on pastoral care within the College with opportunities for individual care and counselling. Students will be monitored closely as they progress through the College.

The House structure of the College spans across sport and pastoral care activities. Peer support and welfare groups provide regular opportunities for students across different cohorts of the College to develop positive relationships between students. A school diary system operates for students from Year Two upwards. Regular communication between home and the College for students in Kindergarten and Year One is provided through homework books and email communication.

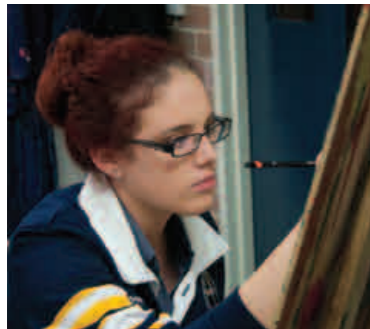
CHRISTIANITY, SERVICE & MISSION

Christianity is taught as the spiritual and moral basis of life, and students will be encouraged to adopt their own decision in coming to a personal faith in Jesus Christ.

The College encourages students and families to be involved in local community churches, where they will be given further opportunity to express their faith and to undertake and fully understand the sacraments.

Many opportunities are provided to our students to be involved in a range of service activities including trips overseas to encourage and assist communities in far less fortunate positions than those experienced by the majority of our students. Students also participate in service learning programs conducted at the College or in conjunction with local organisations.

CURRICULUM



The College meets the requirements of the NSW Board of Studies by offering a comprehensive range of subjects and meeting the syllabus expectations. A choice of subjects that are relevant to university entrance requirements are offered as well as subjects that offer a vocational focus. Students may also have the opportunity of completing a subject at a local TAFE college to supplement their senior studies.

Extension activities and flexible progression enable students to progress more rapidly and to branch into areas of special interest. Work activities will be targeted to student achievement levels so that those requiring additional assistance can achieve success and a growing confidence in their own ability. Learning will be provided in an imaginative, purposeful and enjoyable environment.

The curriculum at Rouse Hill Anglican College emphasises literacy and numeracy development. The timetable structure places greater emphasis on these subject areas and grading is based on achievement in these areas in the Senior School years. Literacy and numeracy skills are also developed across the curriculum through integrated programs targeted at developing these foundational learning skills.

Information and Communication Technologies are an important aspect of the curriculum at the College.

COMMUNITY



STUDENTS ARE REQUIRED TO CONFORM TO HIGH STANDARDS OF COURTESY, PUBLIC BEHAVIOUR AND THE WEARING OF THE COLLEGE UNIFORM. HIGH UNIFORM STANDARDS ARE ENFORCED TO PROMOTE SELF-RESPECT AND A SENSE OF PRIDE WITHIN THE COLLEGE COMMUNITY.

CAMPS & EXCURSIONS

Excursions are a part of the educational experience at Rouse Hill Anglican College, complementing the teaching programs and course outcomes. Other activities and visits by outside organisations to the College also form part of this rich learning experience. The cost of compulsory excursions and activities is included in the service fee which is charged each term.

Overnight excursions and camps are held each year for students from Year Four upwards.

The camping experience means students learn about themselves and discover their strengths and weaknesses while tackling problem solving situations that develop organisational and leadership skills and logical thought.

Outdoor education activities are conducted in conjunction with well-regarded, experienced and qualified organisations, providing challenging activities for our students with an excellent supervision ratio.



CO-CURRICULAR ACTIVITIES

Sport is an integral part of the curriculum at Rouse Hill Anglican College. All students are involved in weekly sport activities, initially focusing on skill development and game play with an emphasis on team skills. In the Senior School, students have the opportunity to be involved in frequent inter-school competition. In the Junior School, there are a number of opportunities for students to be involved in gala day and other interschool activities in a range of sports.

The Junior School is a member of the Christian Schools Sports Association (CSSA) and the Hills Zone Sports Association, and as such, enjoys the benefits of zone and state level competition in a range of sports. Students achieving to a high standard have further opportunities to compete at Combined Independent Schools level.

The Senior School is also a member of the Hills Zone Sports Association whose membership includes independent schools from the Hills district and allows students to compete in a wide range of interschool sports.

In addition to the opportunities for students to excel in the sporting arena, students have the opportunity to be involved in a range of co-curricular activities which continues to develop and reflect student interests.

The range of co-curricular activities continues to develop and reflect student interest and the availability of resources. A key area of emphasis for these programs is music and the arts including musicals, festivals, shows, concert and College band and choir.





COLLEGE STRUCTURE

The College commenced in February 2002 with 120 students and has a current enrolment in excess of 1150 students. The anticipated structure of the College is:

KINDERGARTEN FOUR STREAMS

1-6 THREE STREAMS AT EACH GRADE LEVEL

7-10 FIVE STREAMS AT EACH GRADE LEVEL

11-12 FIVE STREAMS AT EACH GRADE LEVEL

While the total student population of the College is expected to reach 1300, the goal of achieving a caring community for students is maintained through the manageable sized grade groupings and effective pastoral care structures.



LOCATION AND FACILITIES

THE COLLEGE IS SITUATED ON AN 18-ACRE SITE ON THE CORNER OF ROUSE AND WORCESTER ROADS, ROUSE HILL WITHIN THE FAST GROWING NORTH WEST SECTOR OF SYDNEY.

The building design includes well lit, air conditioned and fully carpeted learning spaces with an emphasis on access to educational technology. Classrooms are grouped around a number of large learning centres, providing convenient access to computer resources.

Present facilities include specialist secondary classrooms for Science, Design & Technology, Visual Arts, Music, Food Technology and Computing Studies, as well as general purpose classrooms, library, a gymnasium/auditorium, multi-purpose courts, basketball courts, a beach volleyball court and oval.

GOVERNANCE

Rouse Hill Anglican College is a member of the Sydney Anglican Schools Corporation, which is a body established by the Anglican Church Diocese of Sydney. Local policy is vested in a College Council which is appointed by the Corporation. Further information about the Sydney Anglican Schools Corporation can be obtained from www.sasc.nsw.edu.au.

Day to day management including staffing, enrolments and educational programs are the responsibility of the Principal.



PARENTS AND FRIENDS ASSOCIATION

- ➔ FAMILY SUPPORT
- ➔ FUNDRAISING
- ➔ SOCIAL
- ➔ WORKING BEES

A Parents and Friends Association meets regularly, providing extensive opportunities for the involvement of parents in the life of the College. All parents are encouraged to become members and to contribute to the various activities of the association.

P&F CONNECTION
CONTRIBUTION
& COMMUNITY

TRANSPORT

THE COLLEGE IS CURRENTLY WELL SERVED BY BUSWAYS AND HILLSBUS. OVER TIME, ADDITIONAL SERVICES AND MODIFICATIONS TO EXISTING SERVICES ARE ESTABLISHED TO REFLECT THE DRAWING AREA OF THE STUDENT POPULATION.

Further information about bus routes can be obtained from the relevant websites:

www.busways.com.au

www.yourbus.com.au/HillsBus-Home.html

BEFORE AND AFTER SCHOOL CARE

A before and after school care service operates from 6.45am in the morning and until 6.30pm in the evening. The service is operated by KTOOSH Services (www.ktoosh.com.au). KTOOSH also provide on-site Vacation Care programs.

Bookings for the Before and After School Care may be made through the College Office or direct to KTOOSH Services. KTOOSH Services is an Approved Childcare Provider and offers Fully Funded Fee Relief.



ENROLMENT



Applications should be made using the Application for Enrolment provided with this Prospectus and forwarded with payment of the non-refundable application fee.

Details of relevant fees are contained in the Fee Schedule.

Interviews with applicants and their parents will be arranged in order of receipt of application. Following the interviews each applicant may be offered a place which must be confirmed within fourteen days by the return of an Acceptance and secured by payment of a bond.

Advance applications are welcome and advisable. Enrolment interviews will be held the year before anticipated enrolment or as places are available. As waiting lists do exist for a number of entry points to the College, applicants are encouraged to lodge their Application for Enrolment promptly.



UNDERSTANDING THROUGH **CHRIST.**



PO Box 3296, Rouse Hill NSW 2155
Cnr Rouse & Worcester Roads, Rouse Hill NSW 2155

T 02 8824 5844 **F** 02 8824 5877
E info@rhac.nsw.edu.au

ABN 63 544 529 806
A school within the Sydney Anglican Schools Corporation