

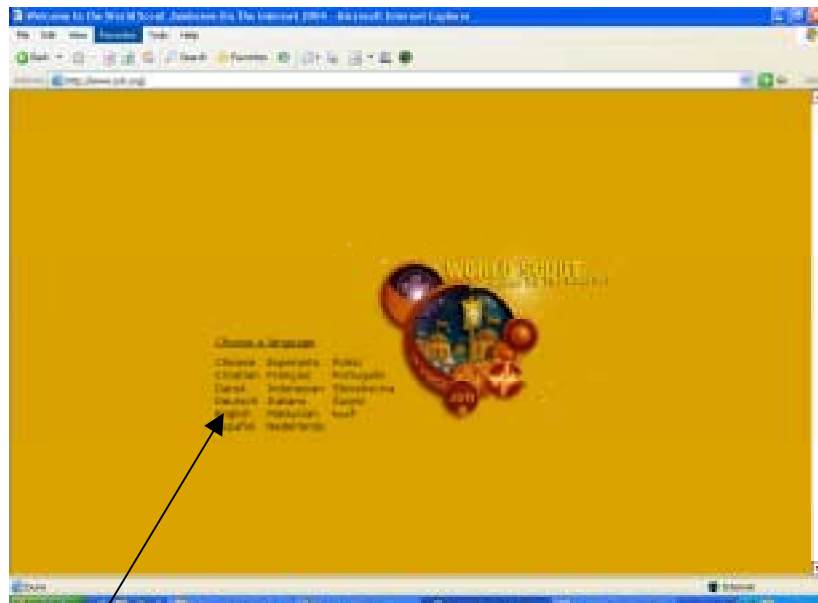
How to Chat with JOTI.org ~ A Basic User's Guide

In order to use the chat on this site your computer must have Java installed. If it doesn't this is a free download from www.java.com

1) Ensure your computer is connected to the Internet and open Internet Explorer. In the Address Bar type in www.joti.org and press the enter button on the key board:



2) The JOTI web site will load in:



3) Click on English and wait for the new page to load in

4) Click on the chat link on the left hand navigation bar:



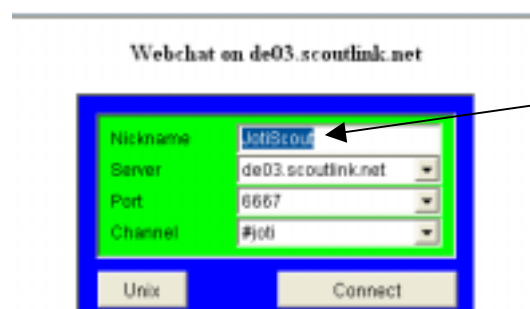
5) Click on the webchat2 link – this will open in a fresh window:



This may take a little while to load depending on your connection speed. You will notice in the lower left hand corner of the window that it says "java applet loading..."

If it doesn't load at all this probably means you don't have Java so visit www.java.com and follow the instructions to download and install java, then come back to these instructions.

6) After this page has loaded you will see the below:

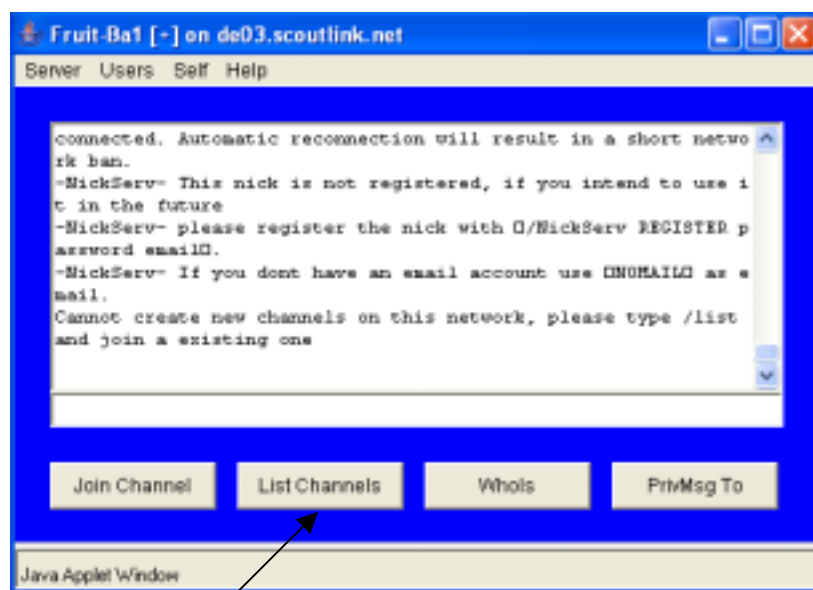


a) Type in a nickname (often referred to as a 'nic') – don't click anywhere just start typing and it will appear over the blue highlighted 'JotiScout':

b) then click the connect button (this may take a little while to load)

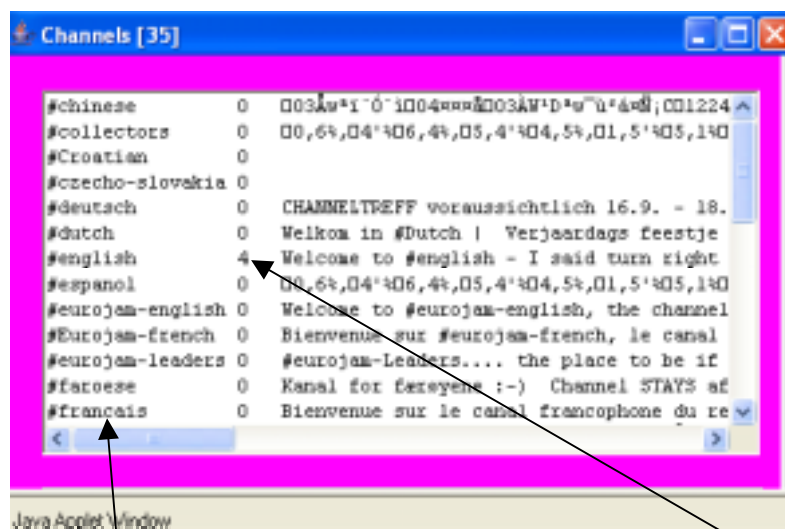
Please note that if you receive a 'cannot connect message', close out of the screen and keep trying until you do. There is a lot of traffic on the day and it might get a bit slow and take a few tries for the connection to happen!

7) A new window will pop up:



8) Click list Channels

9) It will take a few moments for the new window to pop up:



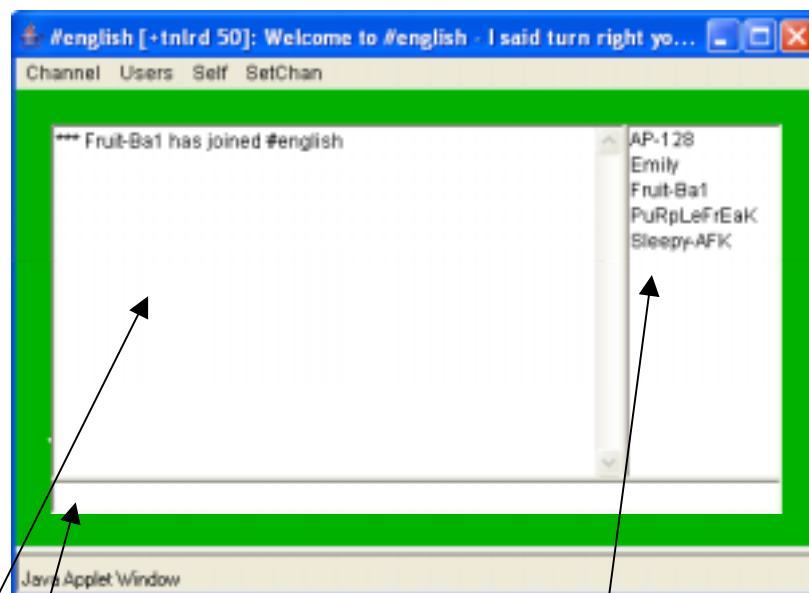
Channel Suggestions:

- **Trivia** – no chatting, just answering questions, good for Guides who are not sure what to say, but who like to answer questions!
- **Mini Scouts** – good for the younger Guides
- **Leaders** – for the over 18s
- **Rovers** – for Guides 14-18 years
- **Trefoil** – general chat for all Girl Guides and Girl Scouts everywhere

Scroll through the list and choose an appropriate channel to join. Some will be appropriate for younger Guides and some won't be. The number indicates how many chatters are currently using that channel. Some channels indicate the language and others indicate the name such as 'Trefoil' or 'Rovers' for example. The sentence to the right is usually a brief description of the channel.

Suggestion: Have a few practices prior to your JOTI event and ask your fellow chatters what channels they think would work for your age group of Guides. Some channels are self explanatory, eg: rovers are obviously for older Guides and Scouts! There will be more channels closer to actual day of JOTI.

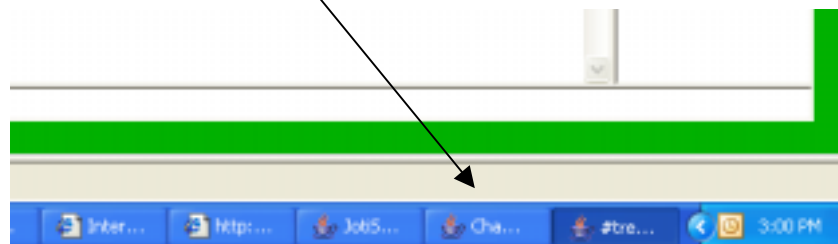
Double click on your channel of choice and then wait for the window to load:



The left side shows the conversation and the right hand shows who is currently chatting.

10) Click here: Type in what you would like to say and then press enter. Read through and join in! If you are not sure what to say, just type hello and read the conversation through – it's the same as having a conversation but instead of talking we are typing.

If at any time you would like to change the channel, look down on your task bar and click on the Channel window. Have another look at the list and select another Channel using the same process as before (see point 9 above).



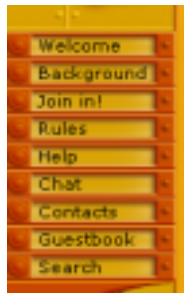
What to chat about?

Here is a list of suggestions to chat about if you are feeling lost for words!

- Ask your fellow chatter about themselves: personal information such as what hobbies they have, how many brothers and sisters they have, what grade they are in at school?
- Ask your fellow chatter about their Guide/Scout unit: When do they meet? How long do they meet for? What sort of things do they do? What is their uniform like?
- Ask your fellow chatter about what badges they have or would like to have?
- Ask your fellow chatter about the place they live: is it a big city, or a rural area...
- There are some special interest channels such as trivia that are fun to have a go on

More Information:

There is a lot of useful information on the www.joti.org site.



Prior to your JOTI event take some time to look at the different links and read through the rules and help link especially.

For those with a bit more experience, under the Help link is a list of different servers, software to use and other help information. The help with IRC commands is also very useful to check out for those with growing confidence.

It is possible to participate in JOTI via email, the help, email link will give you the information on how to do this, but it is recommended that you start preparing for this a while before the actual day.

Kids Chatting on the 'Net: leaving a child alone to chat on the 'net is like letting them go for a swim in heavy surf on their own. Don't Do It! Don't allow any child in your care to give out any personal details. If someone suggests badge swapping be very careful. Check with your Leader to find a suitable address. BUT if in doubt, don't!

For tips on safe internet use visit: www.netalert.com.au

These notes have been compiled by Anne-Marie Lillico, Coordinator, Ulverstone Online Access Centre

Need a little more assistance? Email: ulverstone@tco.asn.au