

ANBTPSAA13

Motorized Projection Screen

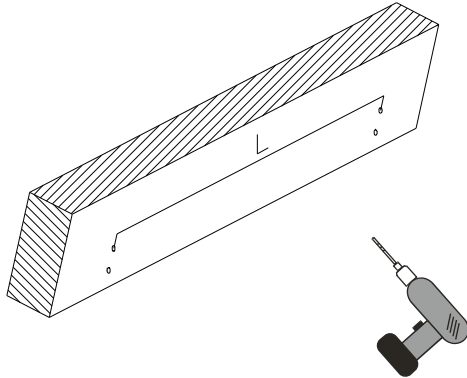
IMPORTANT!

If screws are included they may not be suitable for the material of your wall, ceiling or floor. Replace the screws with suitable ones if needed.

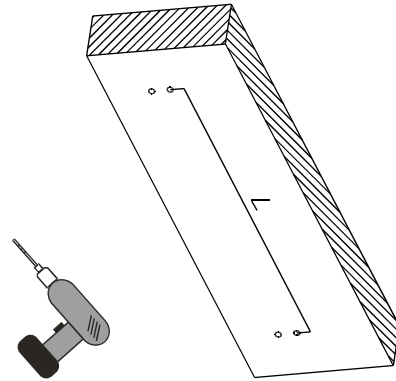
In case you are unsure regarding any aspects of the mounting of this product please Consult a professional.

Installation

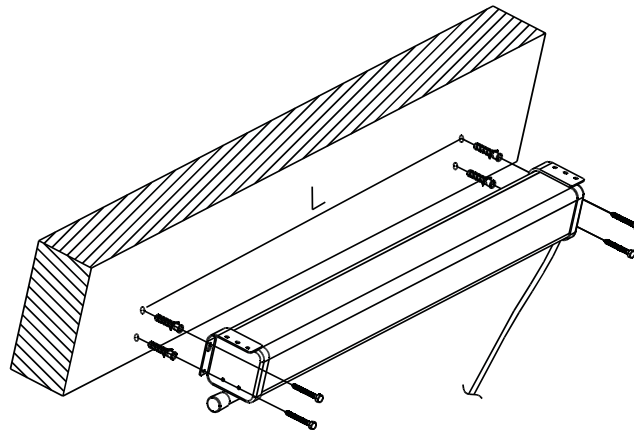
1a



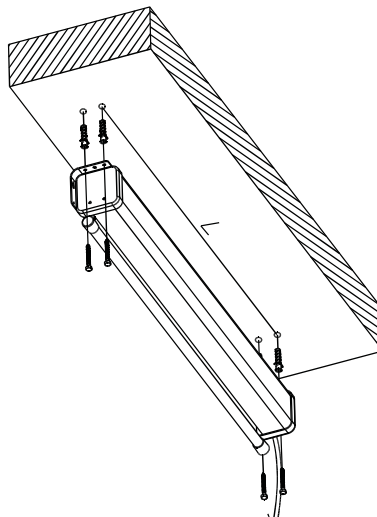
1b



2a

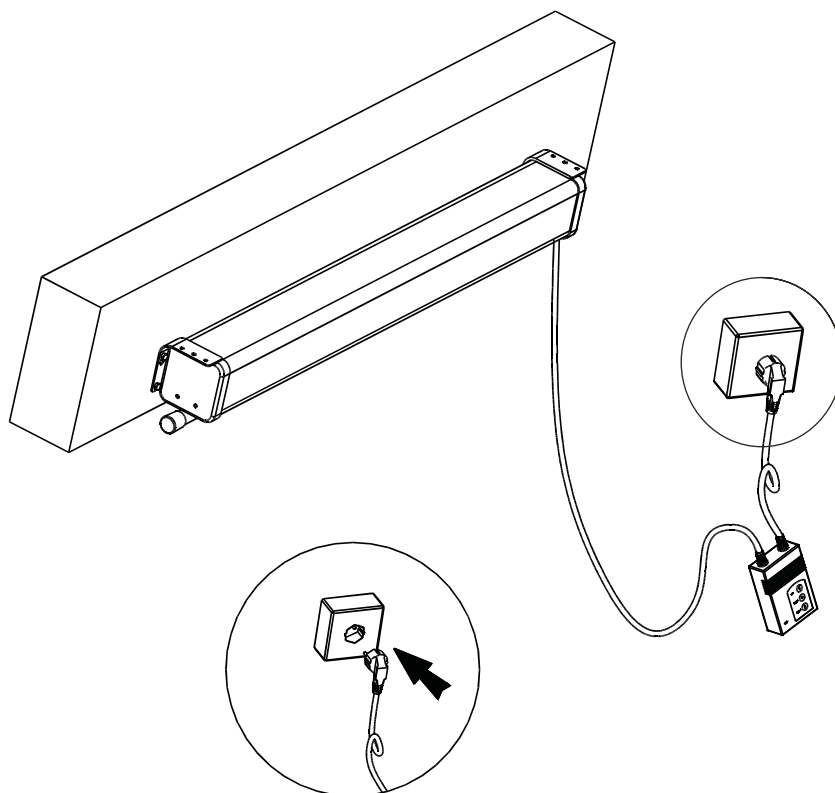


2b

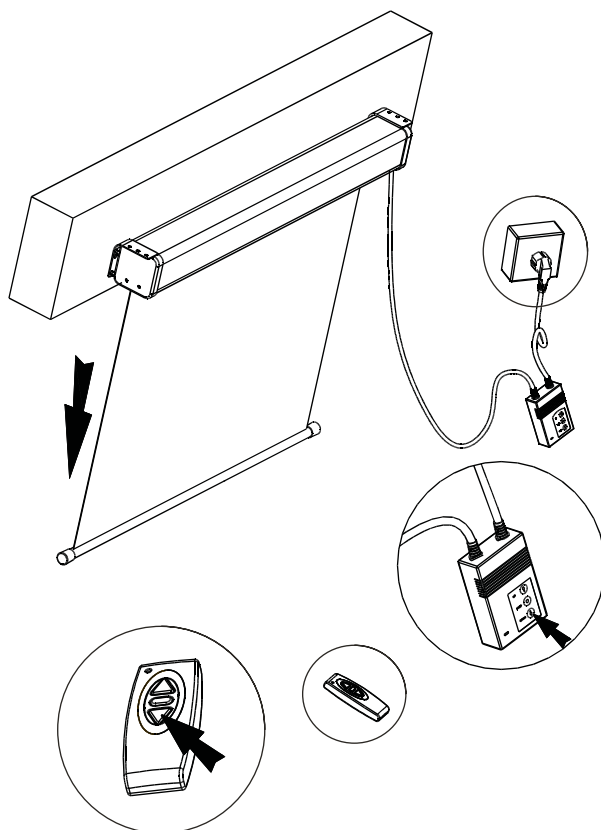


Operation

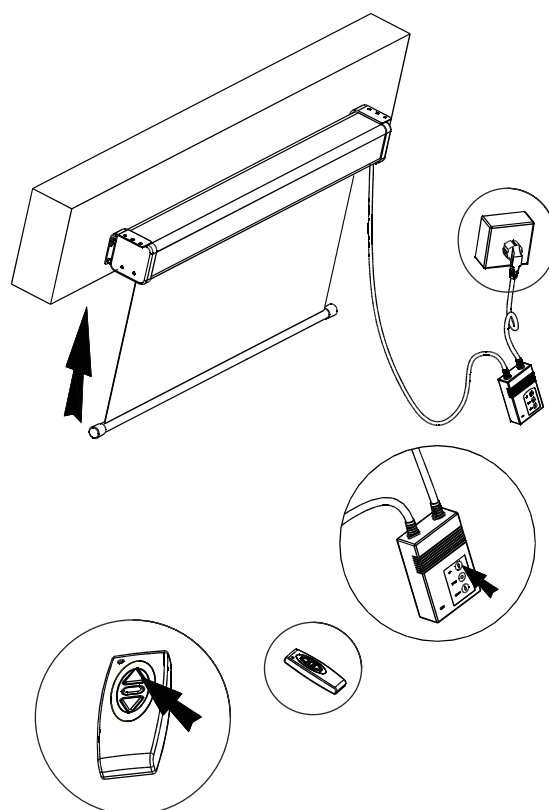
1



2



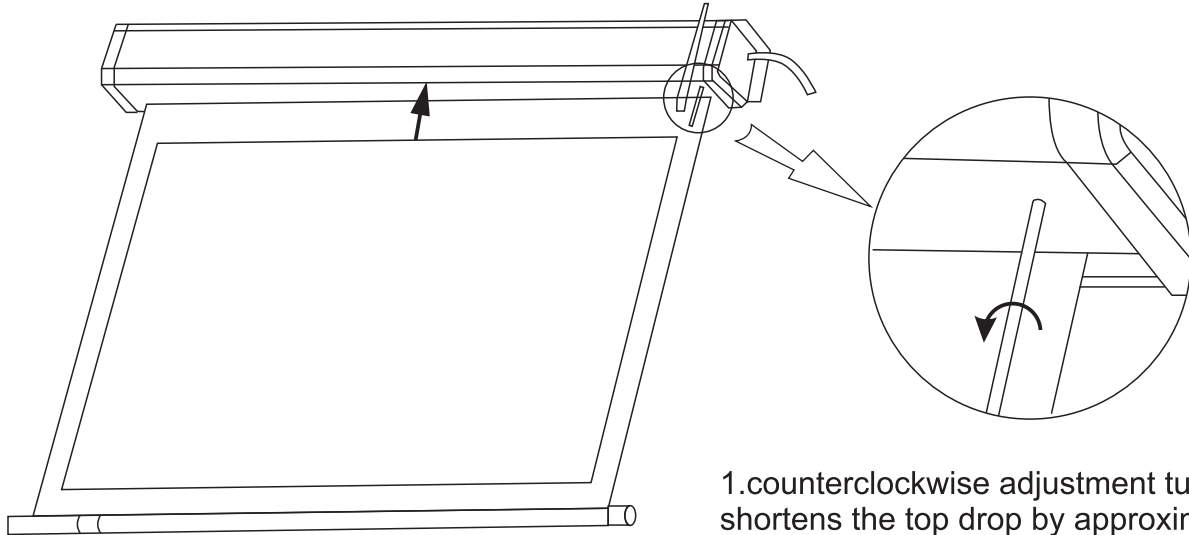
3



IMPORTANT
PLEASE ROLL UP THE PROJECTION SCREEN AFTER USE.

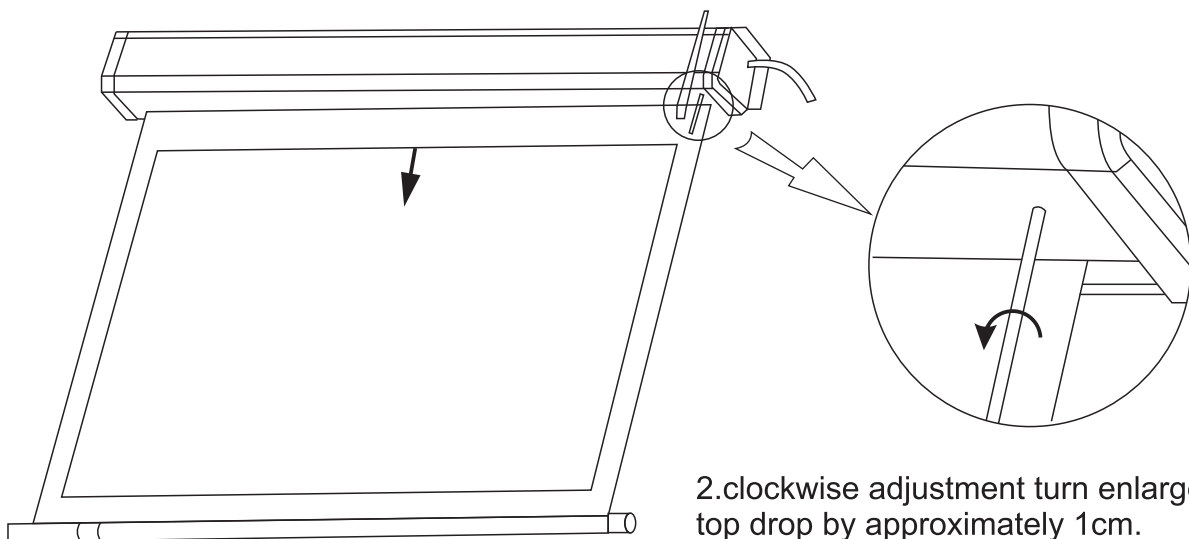
Drop adjustment

a



1. counterclockwise adjustment turn shortens the top drop by approximately 1cm.

b



2. clockwise adjustment turn enlarges the top drop by approximately 1cm.

How to exclude the malfunction of PS series -Electric Projection Screen

1. Check the transmitter's battery power is enough or not, please change the battery when the signal is weak.

2. After changing the transmitter's battery, still no response from screen when press the transmitter, you may need to reset the transmitter, and correct the code of the receiver, steps are as follows : (Keep pressing the "Down" button of the receiver while connecting the power, release the "Down" button, and press the "Up" button, then press the "Stop" button, there will be a "di" sound, which means code matched. Note: All the steps above should be finished within 10 seconds).

3. Limit mode malfunction (After pulling down the screen, you can't see the dark side or too much white curtain show up. After the screen rolling back, the gap between the lower lever and the housing is too much, normal situation is 1CM, or the screen keep rolling) You can reset the device according to the following steps:

① Set the upper black side position: Use 6MM Allen wrench insert the motor adjustment hole which in front of the Screen's right side, continue rotating counter-clockwise until the curtain pull down and the back side can't expose, then rotate clockwise until the black side arrive at the desired position.

② Set the lower lever position : Use 6MM Allen wrench insert the motor adjustment hole which behind the Screen's right side, continue rotating counter-clockwise until the curtain roll up when the distance from lever to the housing is 6CM, and then rotate clockwise until the distance is 1CM.