



Assembly Instructions
Velocity Bookcase
1800 High
2 CARTONS



NOTE: The Velocity Bookcase converts to a Storage Cupboard by adding doors (box 3). If you have ordered a Storage Cupboard additional instructions and hardware are located in box 3.



MANUFACTURER CODE: VBC189
OW CODES: CPVELBC18B, CPVELBOKCR,
CPVELBOKWH, CPVELBC18W

manufactured by designtec
www.designtec.com.au

10 YEAR
WARRANTY

NOTE

Please check you have all hardware before assembling.

If you are missing any hardware, please contact the store of purchase.

Please ensure you have the name of the item, required hardware part and quantity.

Please retain your receipt as proof of purchase to validate your warranty.

CAUTION

Do not tighten screws before all screws are in the right place.

Do not use this product unless all bolts, screw and knobs are firmly secured.

Check that all bolt, screws and knobs are securely tightened at least every 4 months.

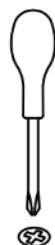
WARNING

If parts are missing, broken, damaged or worn stop using the product until all repairs are made using manufacturer authorised parts.

Failure to follow these warnings could result in serious injury.

TOOLS REQUIRED FOR ASSEMBLY

1 x Philips Head Screwdriver



HARDWARE INCLUDED

Note - Individual hardware images are not to scale.

A & B - TWO PART FOOT



C - PIN



D - 16mm SCREW



E - CONFIRMAT SCREW



F - SHELF SUPPORT

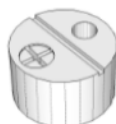


L - METAL DOWEL



PRE-INSERTED HARDWARE

CAM HOUSING

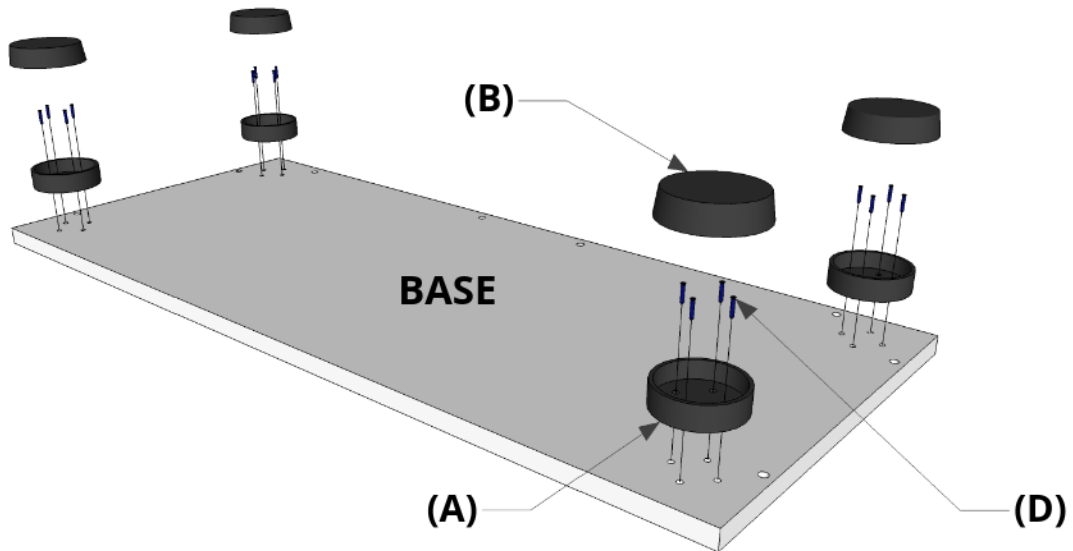


STEP 1

Unscrew the two part foot to separate PART (A) from PART (B).

Fix PART (A) of two part foot to the bookcase base using 16mm SCREWS(D).

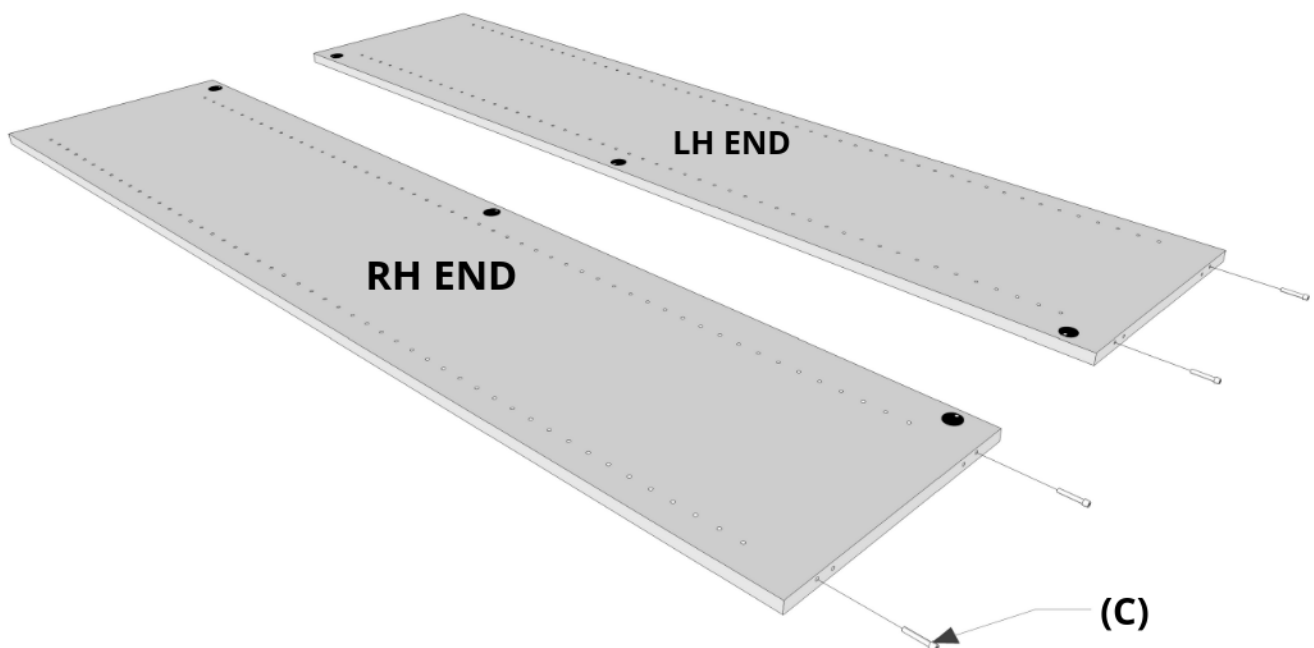
PART (B) of the two part foot can now be attached to PART (A) by placing it on top and rotating clockwise.



STEP 2

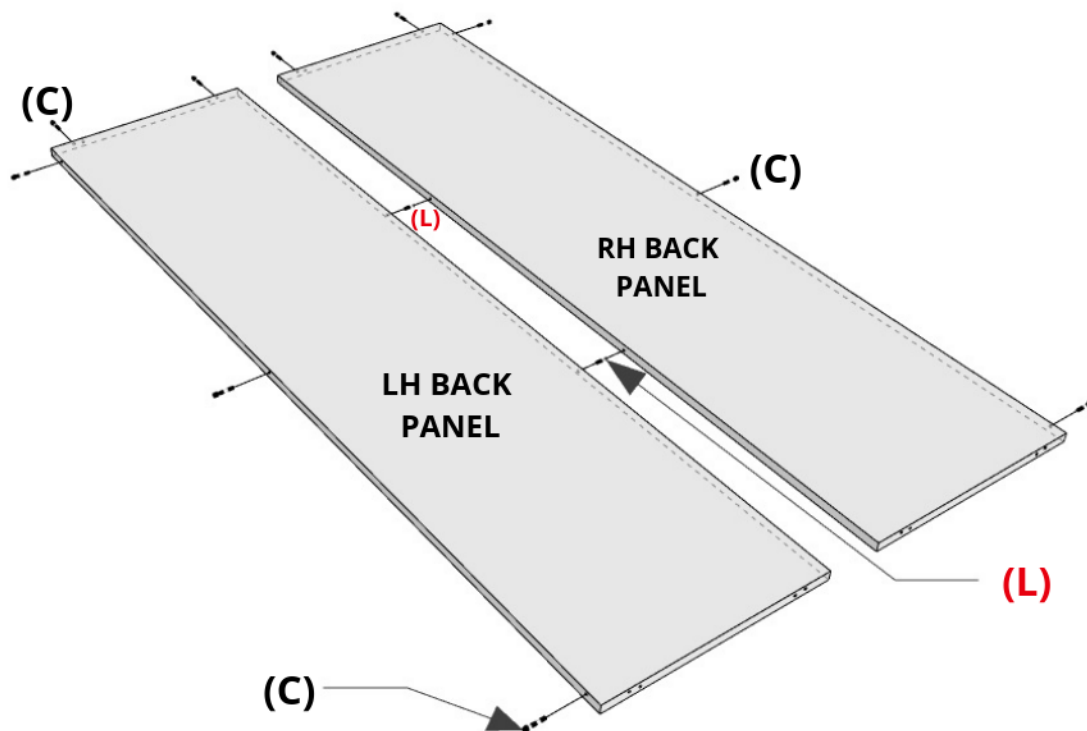
Fix four (4) PINS (C) into the outer pre-drilled holes on the end panels with your screwdriver.

NOTE: these pre-drilled holes are slightly offset to the edge.



STEP 3

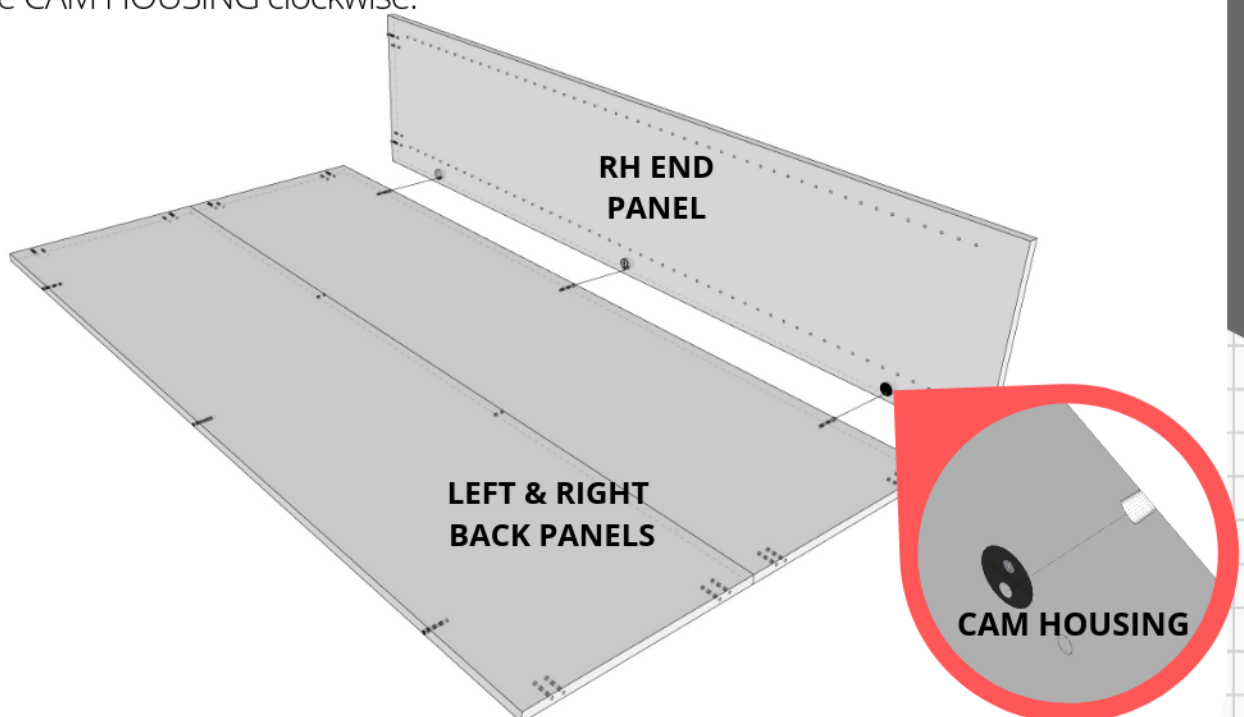
Take your two (2) METAL DOWELS (L) and slide into central pre-drilled holes to join the left hand side (LHS) and right hand side (RHS) back panels together.



Then insert ten (10) PINS (C) into the outer pre-drilled holes on the back panels with your screwdriver.

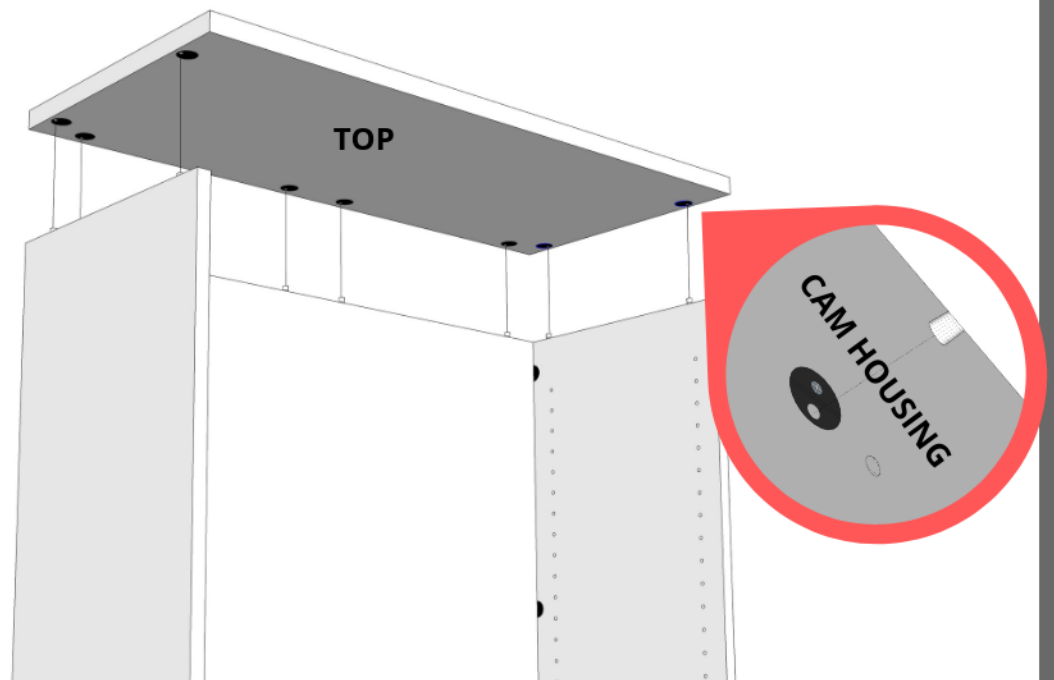
STEP 4

Attach both LH and RH end panels to the back panel by aligning the PINS (C) with the pre-inserted CAM HOUSINGS. To tighten, use your screw-driver and rotate the screw on the CAM HOUSING clockwise.



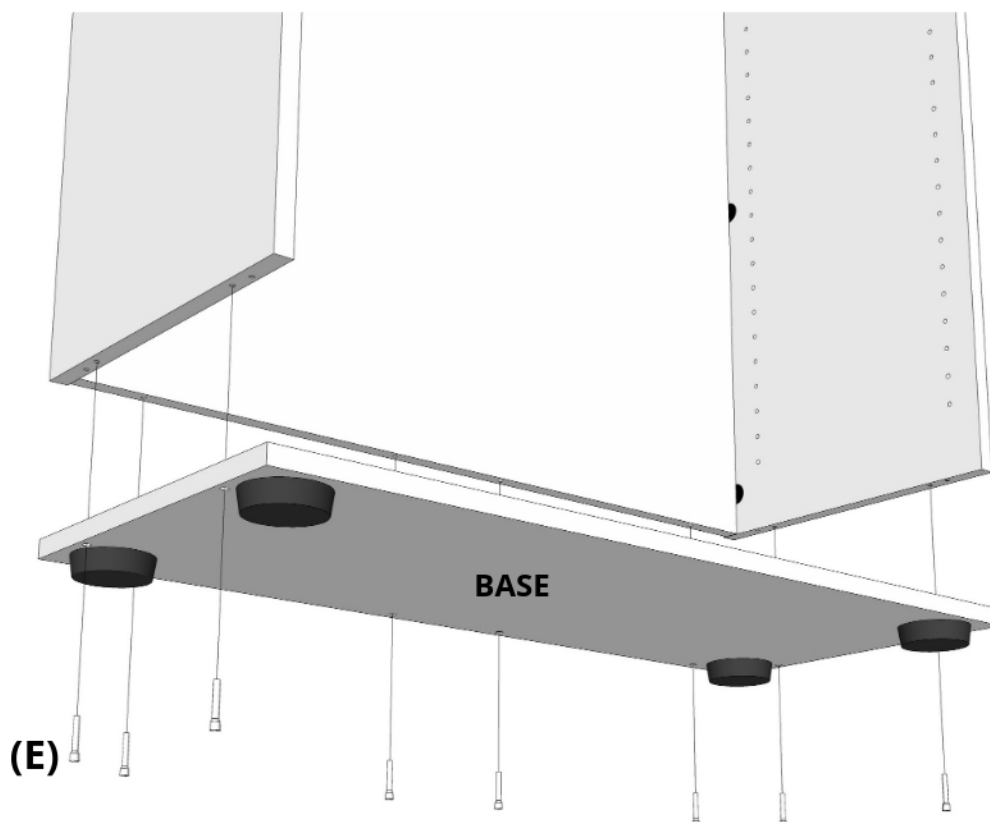
STEP 5

Fix the bookcase top to the back & ends by aligning the PINS (C) with the pre-inserted CAM HOUSING and tighten by rotating the CAM HOUSING screw clockwise using your screwdriver.



STEP 6

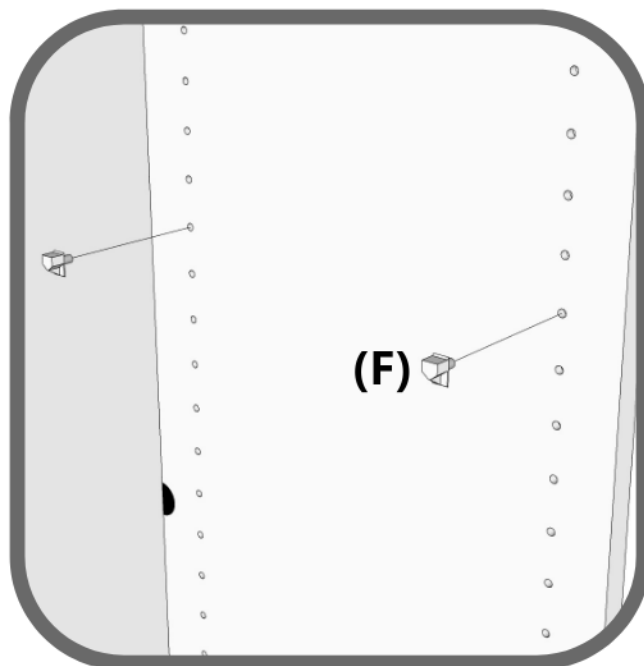
Take your bookcase base and align with the back and sides of your bookcase. Place eight (8) CONFIRMAT SCREWS (E) through the pre-drilled holes on the underside of the base. Using your screw driver, tighten all CONFIRMAT SCREWS (E) until base is secure.



NOTE: On un-even floor the two part foot can be adjusted out to level the bookcase.

STEP 7

To insert shelves, place your SHELF SUPPORTS (F) in the holes on the end panels at the desired shelf height and the shelf sits on top



NOTE: IF YOU HAVE ORDERED A STORAGE CUPBOARD, HARDWARE AND INSTRUCTIONS FOR THE ATTACHMENT OF DOORS ARE IN BOX 3 OF 3.



Assembly Instructions
Velocity Storage Cupboard
1800 High
3 CARTONS



NOTE: The Velocity Bookcase converts to a Storage Cupboard by adding Doors (Box 3). These instructions include the additional steps of attaching doors to your storage (bookcase) unit. Please find your instructions & hardware for the bookcase in BOX 1.



MANUFACTURER CODE: VSC189
HOW CODES: CPVELCUPGB, CPVELSC18B, CPVELBOKWH,
CPVELSC18W, CPVELCUPGR

10 YEAR
WARRANTY

NOTE

Please check you have all hardware before assembling.

If you are missing any hardware, please contact the store of purchase.

Please ensure you have the name of the item, required hardware part and quantity.

Please retain your receipt as proof of purchase to validate your warranty.

CAUTION

Do not tighten screws before all screws are in the right place.

Do not use this product unless all bolts, screw and knobs are firmly secured.

Check that all bolt, screws and knobs are securely tightened at least every 4 months.

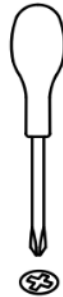
WARNING

If parts are missing, broken, damaged or worn stop using the product until all repairs are made using manufacturer authorised parts.

Failure to follow these warnings could result in serious injury.

TOOLS REQUIRED FOR ASSEMBLY

1 x Philips Head Screwdriver



HARDWARE INCLUDED

Note - Individual hardware images are not to scale.

G - 16mm SCREW



x 12

H - HINGE



x 6

I - HINGE PLATE



x 6

J - HANDLE SCREW



x 4

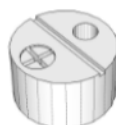
K - HANDLE



x 2

PRE-INSERTED HARDWARE

CAM HOUSING

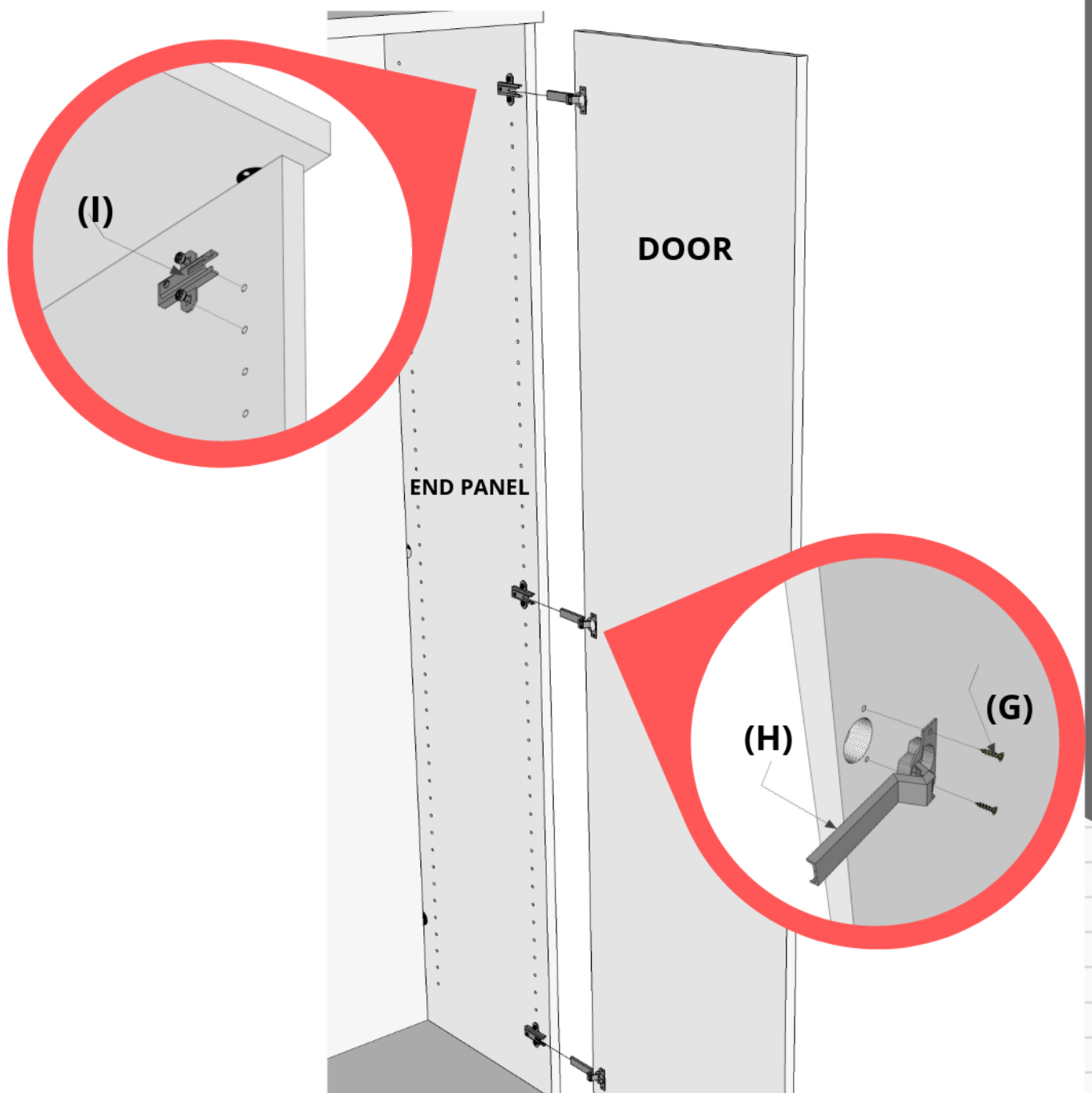


NOTE: The Velocity Bookcase converts to a Storage Cupboard by adding Doors (Box 3). These instructions include the additional steps of attaching doors to your storage (bookcase) unit. Please find your instructions & hardware for the bookcase in BOX 1.

STEP 1

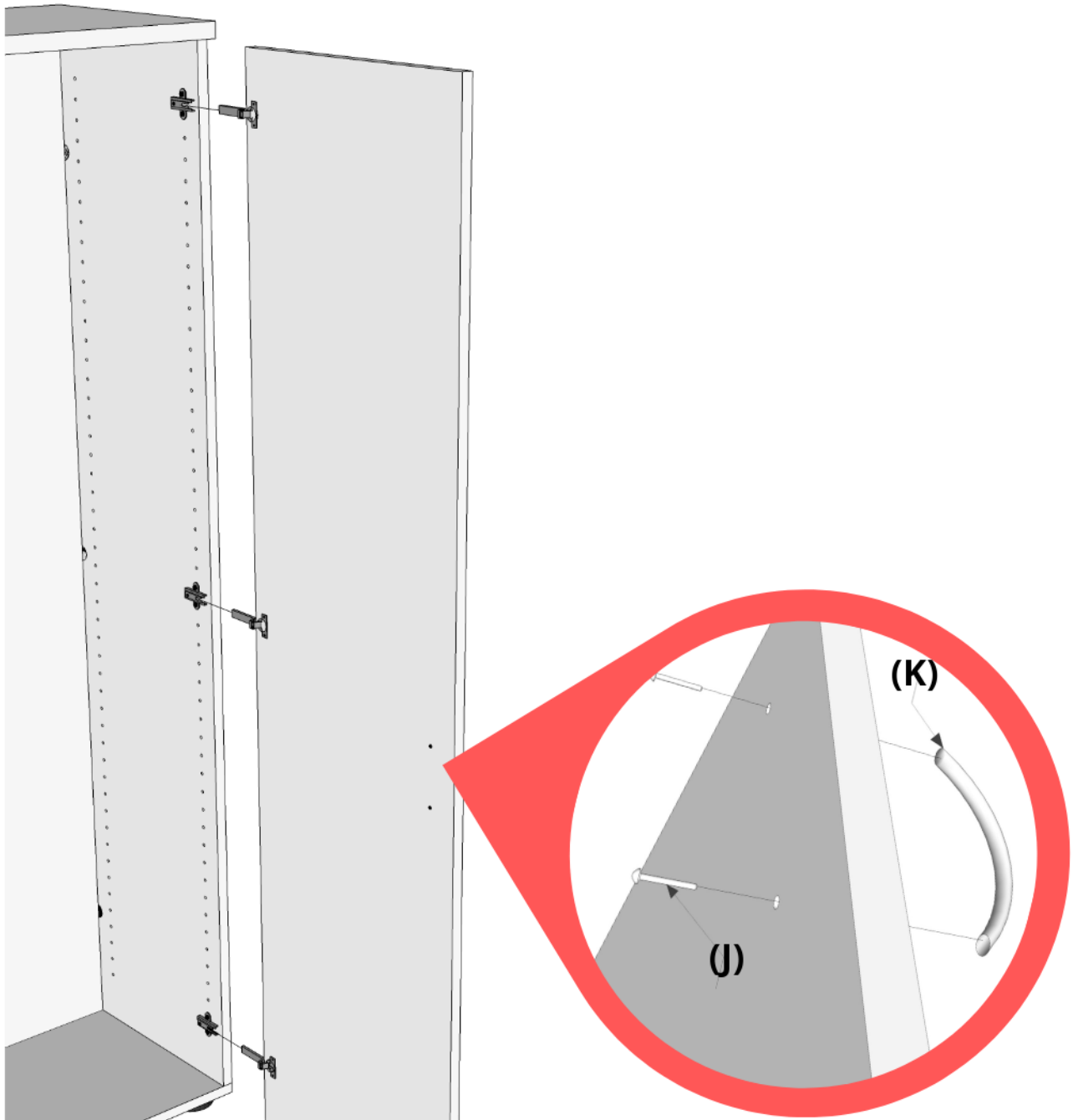
Fix all three HINGE PLATES (I) in the top, centre and bottom pre-drilled holes on each end panel , use your screw driver to secure.

Then fix HINGES (H) onto the doors , use your screw driver and 16mm SCREWS (G) to secure (two screws per hinge).



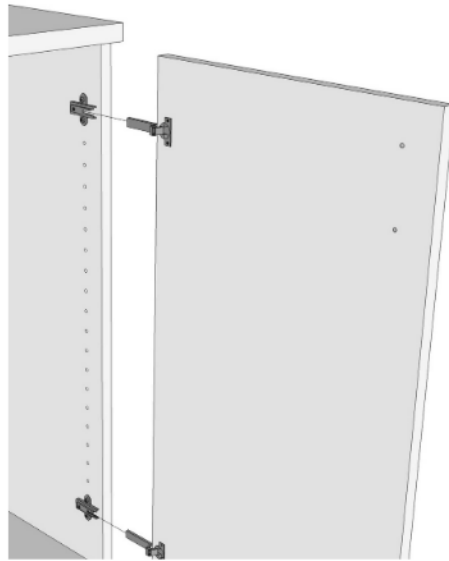
STEP 2

Attach your HANDLES (K) to the door, use your screw driver and HANDLE SCREW (J) to secure (two screws per handle)



STEP 3

Align door hinges with hinge plates. Hook front section of the hinge to the hinge plate then push the back of hinge until it clicks in place and is secure.



NOTE: You can adjust your doors using the 2 screws located on your hinge. The back screw adjusts the door forward or back. The front screw adjust your door left or right.

