



Assembly Instructions
Velocity Hutch
1200 Wide

2 CARTONS



MANUFACTURER CODE: VOH12
OW CODES: CPVELH12BW, CPVELHTGR,
CPVELHTWH, CPVELH12WI

manufactured by designtec
www.designtec.com.au

10
YEAR
WARRANTY

NOTE

Please check you have all hardware before assembling.

If you are missing any hardware, please contact the store of purchase.

Please ensure you have the name of the item, required hardware part and quantity.

Please retain your receipt as proof of purchase to validate your warranty.

CAUTION

Do not tighten screws before all screws are in the right place.

Do not use this product unless all bolts, screw and knobs are firmly secured.

Check that all bolt, screws and knobs are securely tightened at least every 4 months.

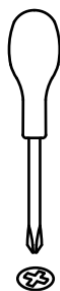
WARNING

If parts are missing, broken, damaged or worn stop using the product until all repairs are made using manufacturer authorised parts.

Failure to follow these warnings could result in serious injury.

TOOLS REQUIRED FOR ASSEMBLY

1 x Philips Head Screwdriver



HARDWARE INCLUDED

Note - Individual hardware images are not to scale.

A - ARRET



x 4

B - PIN



x 16

C - 32mm SCREW



x 4

D - SHELF SUPPORT



x 16

E - CONFIRMAT SCREW



x 2

F - METAL DOWEL



x 3

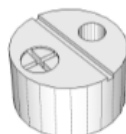
G - SCREW CAP



x 2

PRE-INSERTED HARDWARE

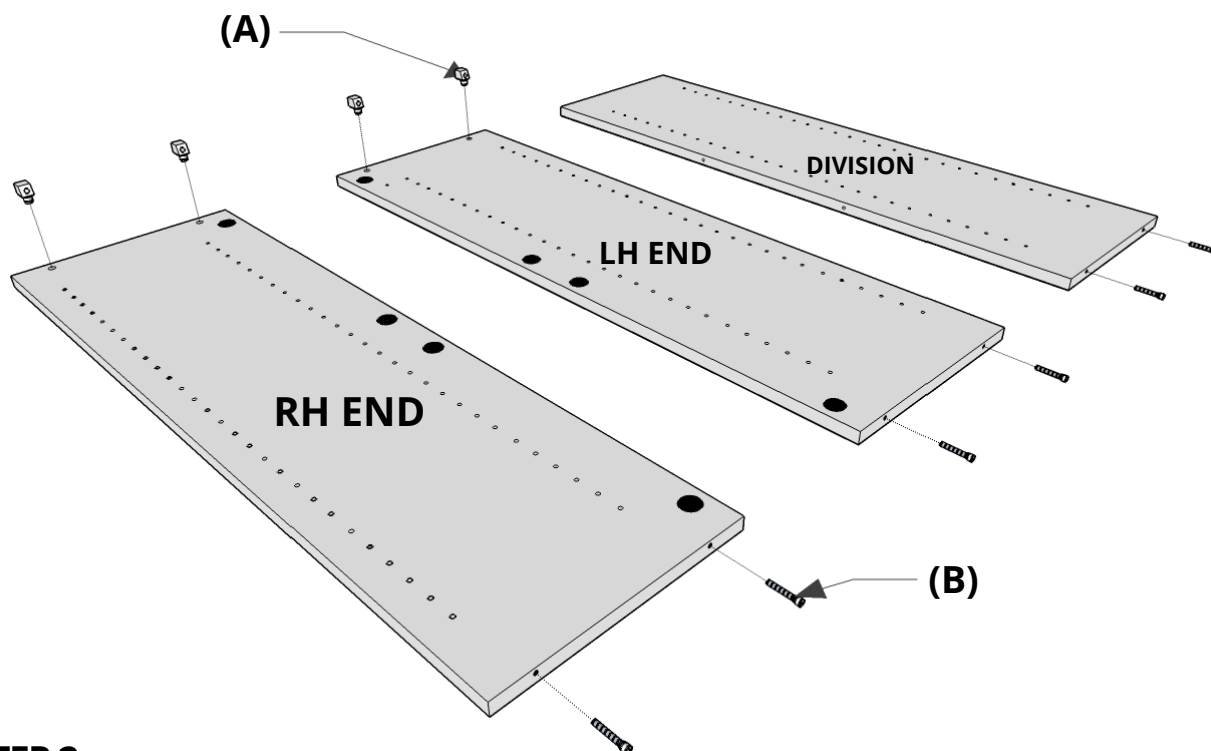
CAM HOUSING



STEP 1

Fix six (6) PINS (B) into the pre-drilled holes at the tops of your end panels & division with your screwdriver.

NOTE: these pre-drilled holes are slightly offset to the edge.

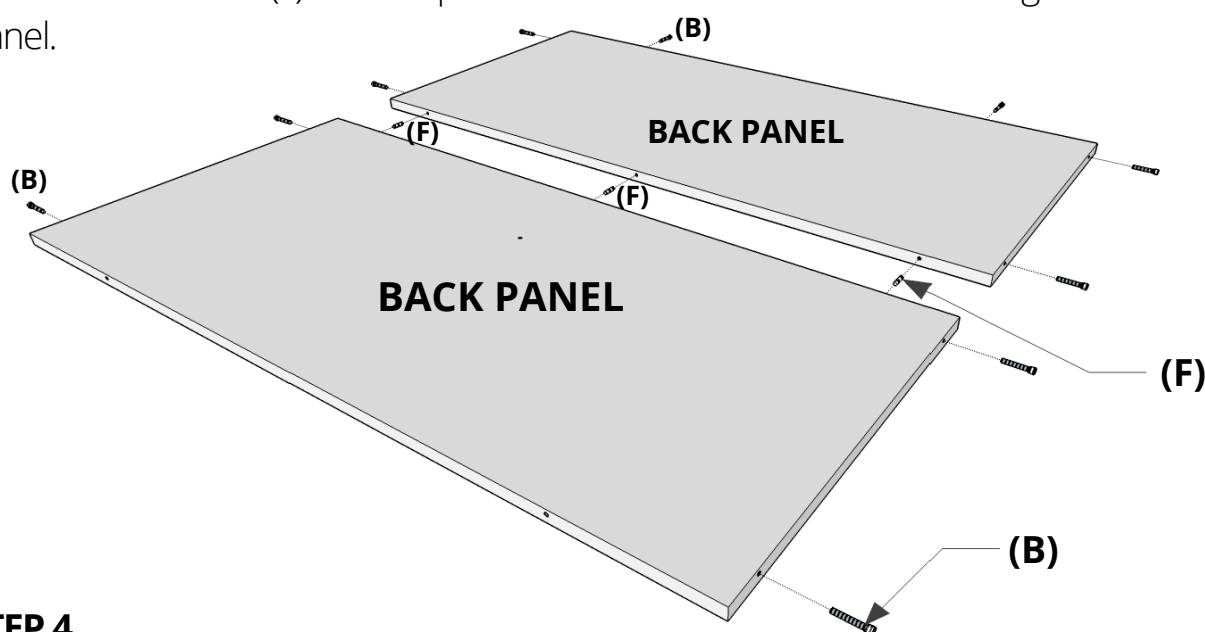


STEP 2

Knock in your ARRERTS (A) into the pre-drilled holes on the inside of your end panels (two per end panel).

STEP 3

Lay out your back panels and align as show below; join back panels by inserting three (3) METAL DOWELS (F) into the pre-drilled holes located down one long side of each panel.



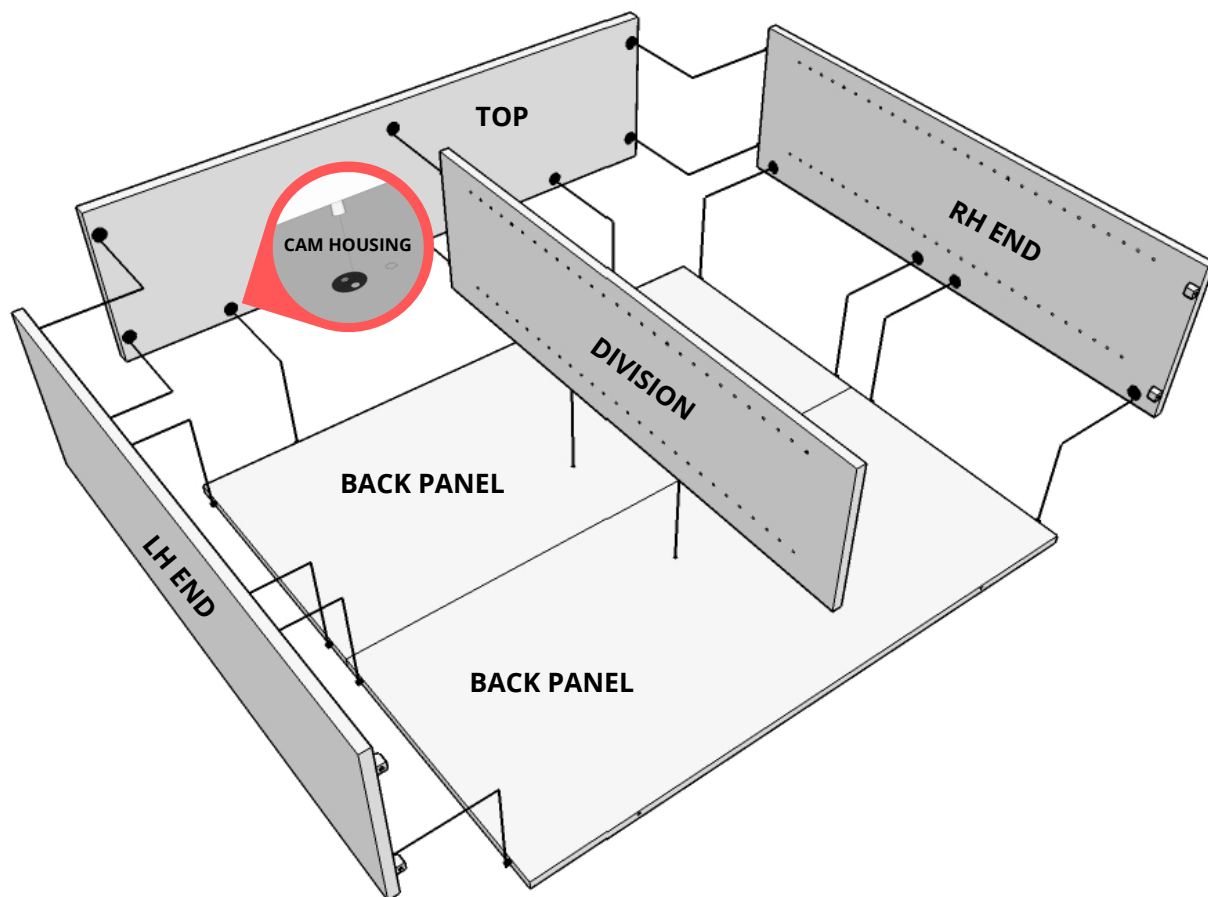
STEP 4

Fix ten (10) PINS (B) into the outer pre-drilled holes of your back panels using your screwdriver

STEP 5

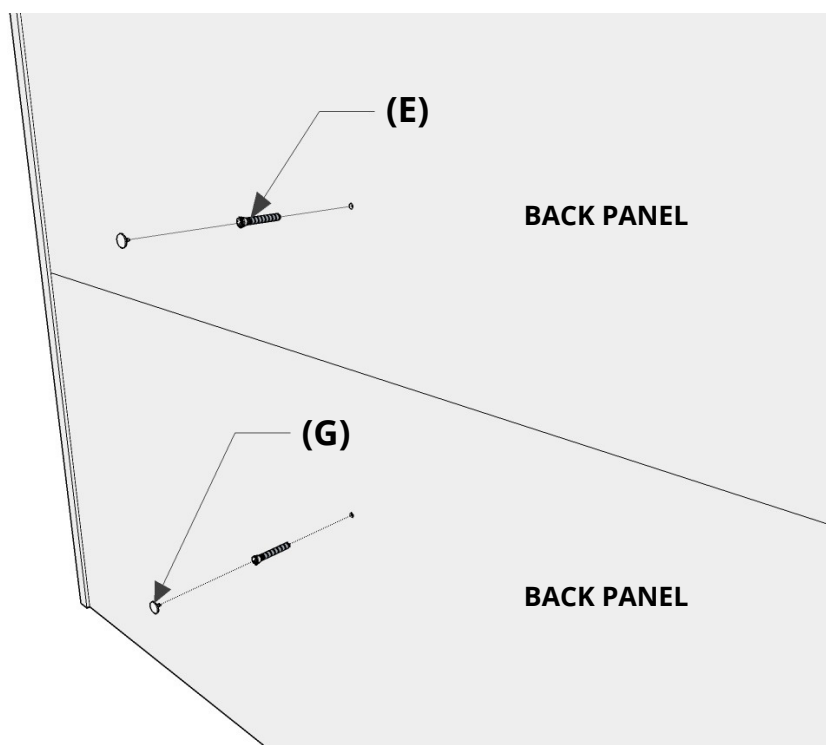
Align the CAM HOUSING on your end panels with your PINS (B) on your back panel. Tighten by rotating the screw to the right hand side.

Place division in centre and align the top with the PINS (B) on both the ends & division, tighten with your screw driver.



STEP 6

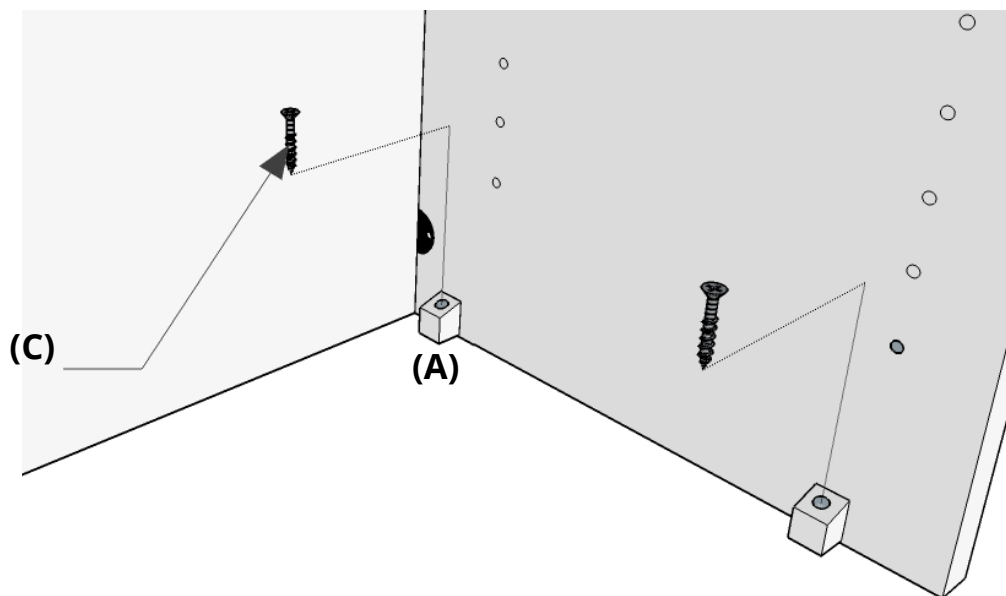
Stand hutch upright holding division, using CONFIRMAT SCREW (E), line up with holes on back and tighten using your screwdriver. Place the SCREW CAPS (G) into the screw.



STEP 7

Place the assembled unit to its required position and insert 32MM SCREW (C) into the top of your ARRET (A) and drive into top with force using your screw driver

NOTE: Be careful not to over tighten.



STEP 8

To insert shelves, place your SHELF SUPPORTS (D) in the holes on the end panels at the desired shelf height and the shelf sits on top.

