



Assembly Instructions  
Velocity Desk Return (Universal)  
1 CARTON



MANUFACTURER CODES: VR96  
OW CODES: CPVELRETGR, CPVELR90BW,  
CPVELRETWH, CPVELR90WI

manufactured by designtec  
[www.designtec.com.au](http://www.designtec.com.au)

**10** YEAR  
WARRANTY

## NOTE

Please check you have all hardware before assembling.

If you are missing any hardware, please contact the store of purchase.

Please ensure you have the name of the item, required hardware part and quantity.

Please retain your receipt as proof of purchase to validate your warranty.

## CAUTION

Do not tighten screws before all screws are in the right place.

Do not use this product unless all bolts, screw and knobs are firmly secured.

Check that all bolts, screws and knobs are securely tightened at least every 4 months.

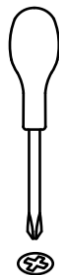
## WARNING

If parts are missing, broken, damaged or worn stop using the product until all repairs are made using manufacturer authorised parts.

Failure to follow these warnings could result in serious injury.

## TOOLS REQUIRED FOR ASSEMBLY

1 x Philips Head Screwdriver



## HARDWARE INCLUDED

Note - Individual hardware images are not to scale.

### A - ADJUSTABLE FOOT



x 2

### B - PIN



x 7

### C - JOINING PLATE



x 1

### D - 17mm SCREW



x 8

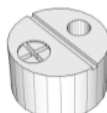
### E - 32mm SCREW



x 3

## PRE-INSERTED HARDWARE

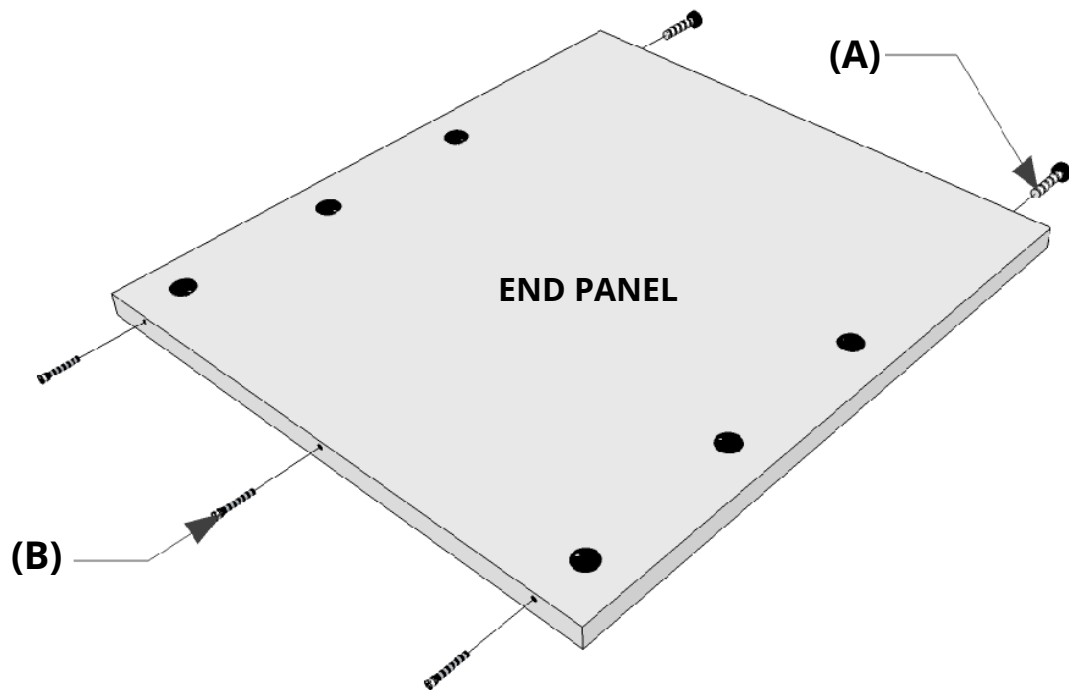
CAM HOUSING



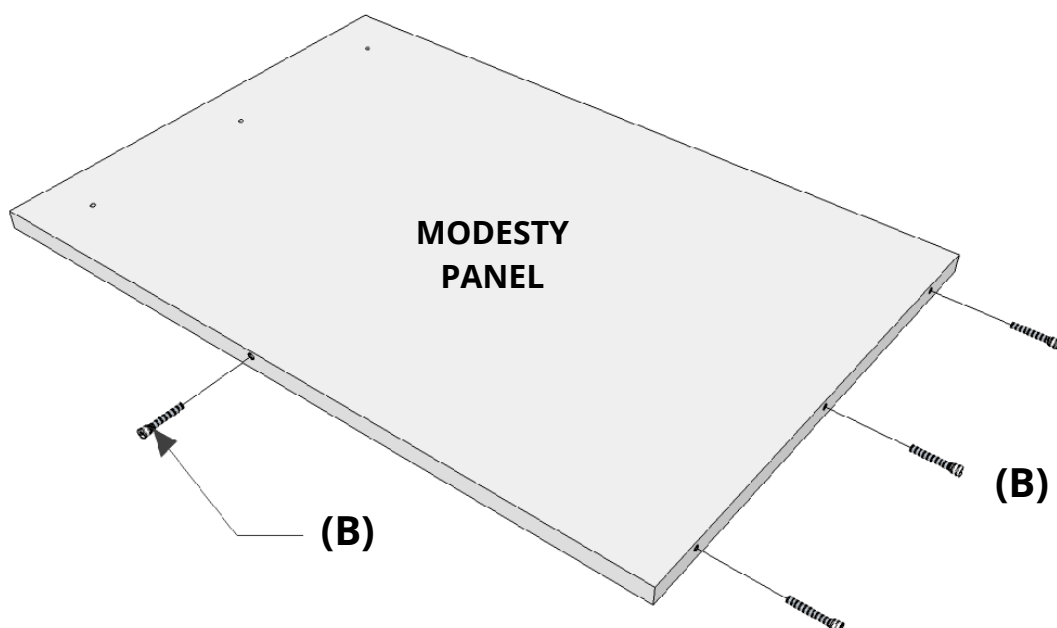
**IMPORTANT NOTE:** This return is universal so can be used on the Left Hand Side (LHS) or Right Hand Side (RHS) of your Velocity Desk. For a LHS return, see below pages 3-4. For a RHS return, see pages 5-6.

### STEP 1

Insert three (3) PINS (B) into pre-drilled holes on end panel. Then insert two (2) ADJUSTABLE FEET (A) into the pre-inserted threaded sleeve.

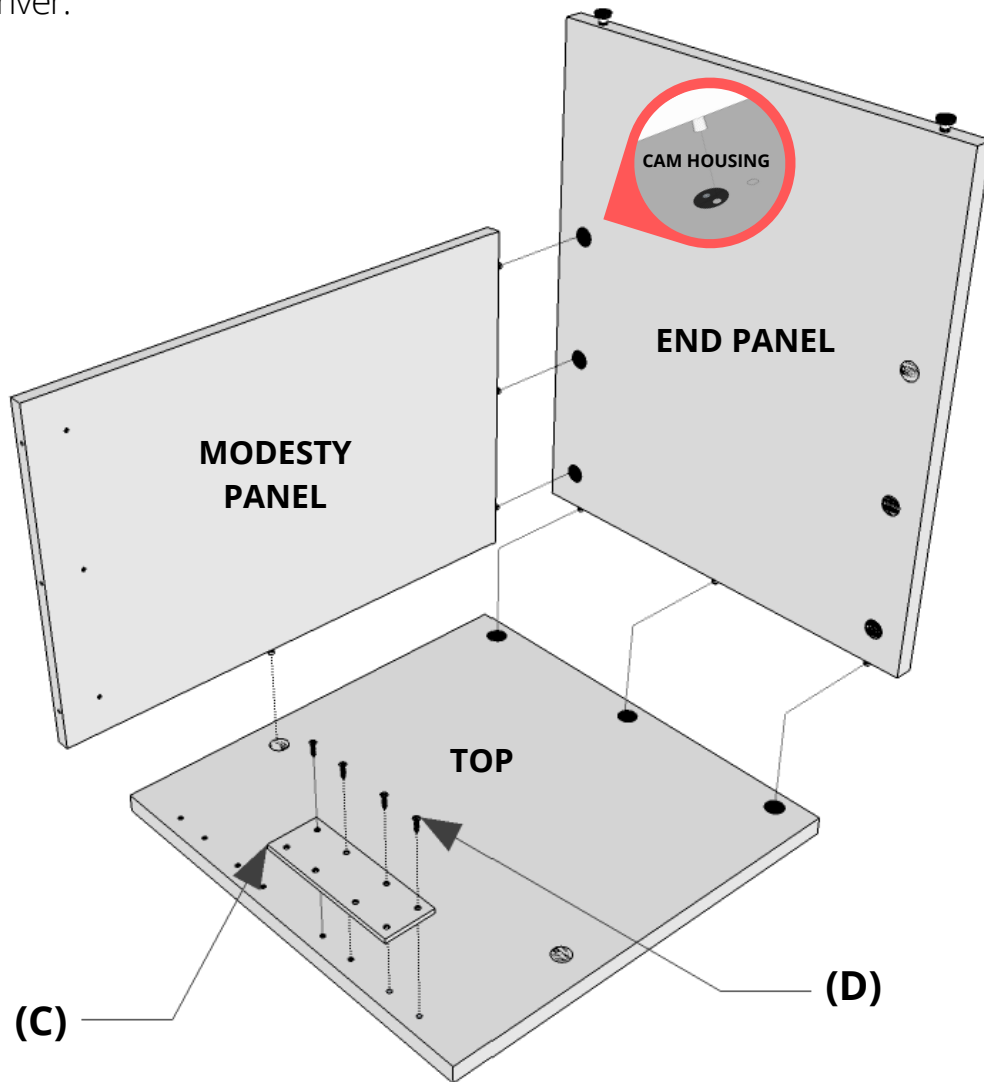


**STEP 2** Insert four (4) PINS (B) into pre-drilled holes on your modesty panel.



**STEP 3** Align the PINS (B) on your modesty panel with the CAM HOUSING on the END PANEL, tighten by rotating the screw to the right hand side with your screw driver.

Then align PINS on the modesty and end panel with the CAM HOUSING on the TOP PANEL and tighten by rotating the screw to the right hand side with your screw driver.



#### **STEP 4**

Attach your JOINING PLATE (C) with four (4) SCREWS (D) using your screwdriver. Noting that one half of the joining plate will over hang the top, allowing it to be attached to the underside of your Velocity Desk.

NOTE: There will be pre-drilled holes under the top of your Velocity Desk to allow for easy attachment, use the remaining four (4) SCREWS (D) and secure with a screw driver.

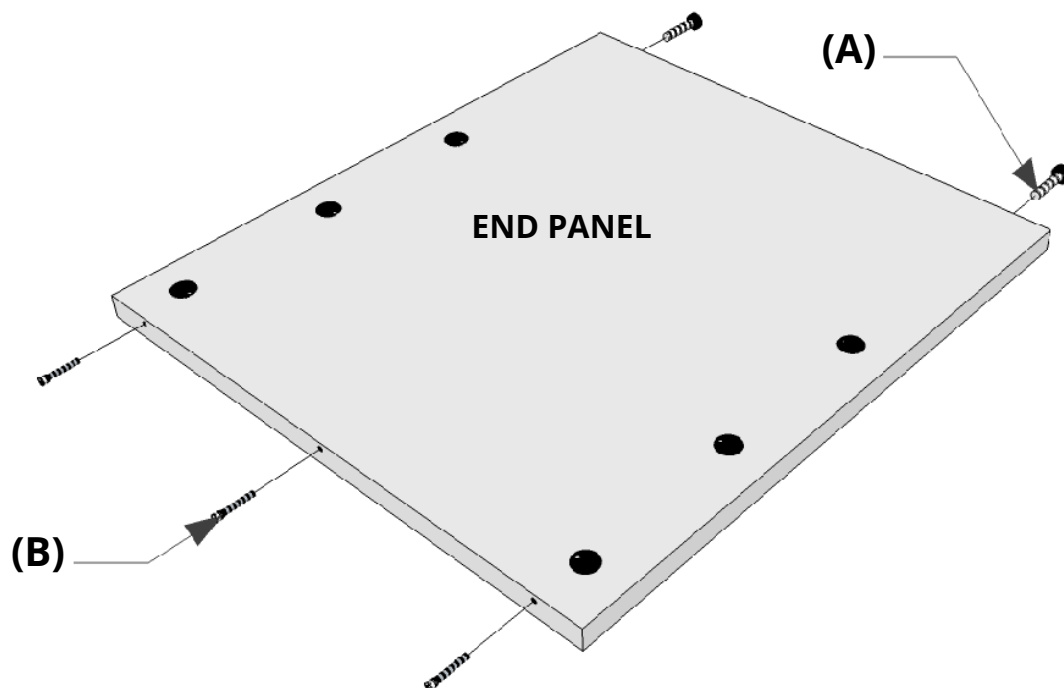
Three (3) extra screws (E) have been supplied to join your modesty panel with your Velocity Desk end if extra support is needed.

## STEPS FOR USING AS A RIGHT HAND SIDE RETURN:

### STEP 1

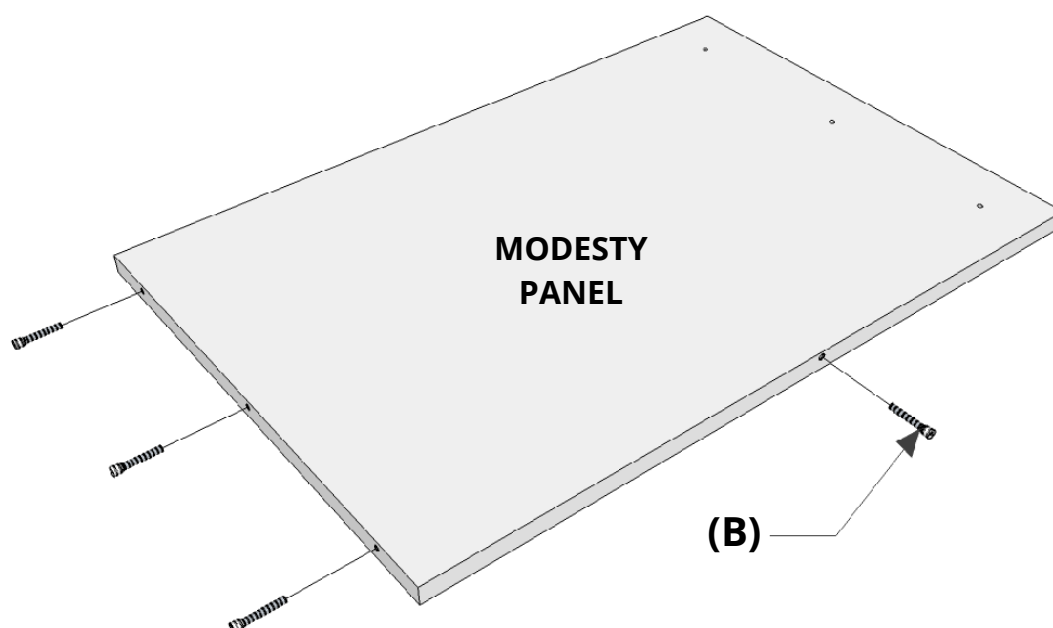
Insert three (3) PINS (B) into pre-drilled holes on end panel.

Then insert two (2) ADJUSTABLE FEET (A) into the pre-inserted threaded sleeve.



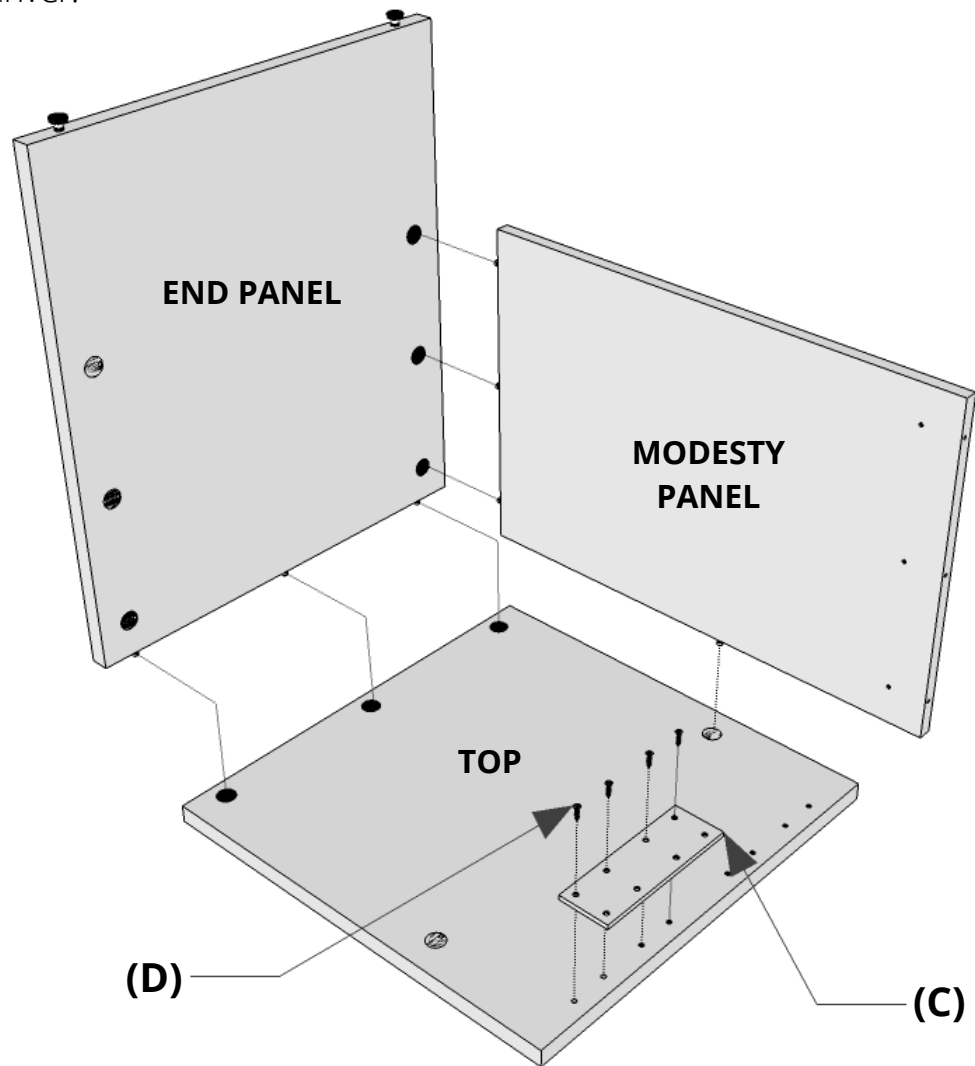
### STEP 2

Insert four (4) PINS (B) into pre-drilled holes on your modesty panel.



**STEP 3** Align the PINS (B) on your modesty panel with the CAM HOUSING on the END PANEL, tighten by rotating the screw to the right hand side with your screw driver.

Then align PINS on the modesty and end panel with the CAM HOUSING on the TOP PANEL and tighten by rotating the screw to the right hand side with your screw driver.



#### **STEP 4**

Attach your JOINING PLATE (C) with four (4) SCREWS (D) using your screwdriver. Noting that one half of the joining plate will over hang the top, allowing it to be attached to the underside of your Velocity Desk.

NOTE: There will be pre-drilled holes under the top of your Velocity Desk to allow for easy attachment, use the remaining four (4) SCREWS (D) and secure with a screw driver.

Three (3) extra screws (E) have been supplied to join your modesty panel with your Velocity Desk end if extra support is needed.