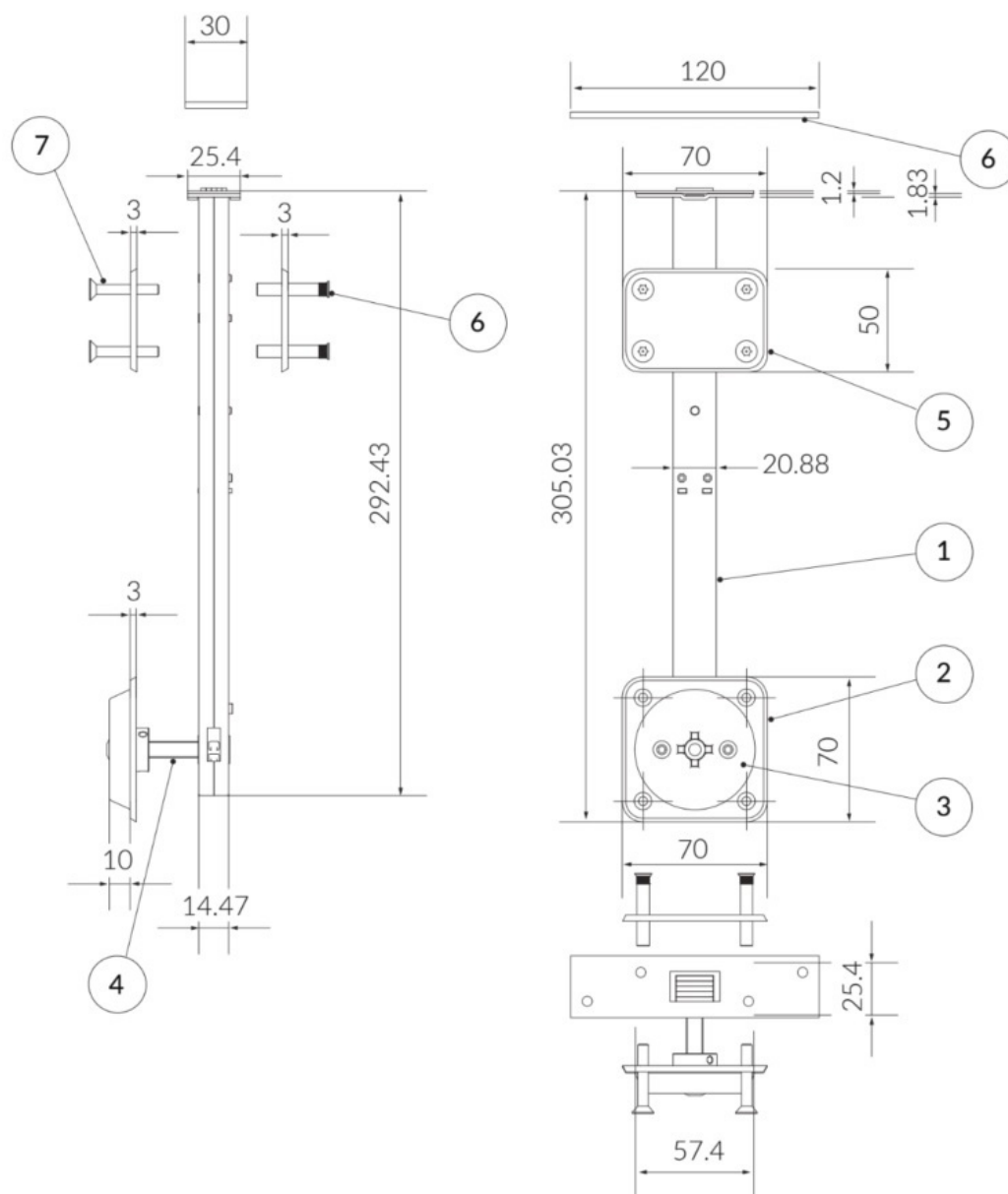




Rhino Mortice Bolt with Reinforcing Kit - Life-Line 119150

DATASHEET



PARTS LIST

| ITEM | QTY | PART NUMBER | DESCRIPTION |
|------|-----|-------------|--|
| 1 | 1 | B200905 | Tubular Mortice Bolt Extended Throw (including face plate) |
| 2 | 1 | B500142 | 70 x 70mm XT Escutcheon Plate |
| 3 | 1 | B310501 | LifeLine Assembly for Lockset |
| 4 | 1 | B200707 | XT Spindle c-w Grub Screw |
| 5 | 2 | B500141 | 70 x 50mm TMB Reinforcing Plate BB |
| 6 | 4 | B100231 | M4 x 35 Plain head c/sunk knurled barrel nut |
| 7 | 4 | B100103 | M4 x 30 6 lobe pin c/sunk mach screw |
| 8 | 1 | B200602 | Strike Plate for TMB 1200mm x 30mm |



Rhino Mortice Bolt with Reinforcing Kit - Life-Line 119150

DATASHEET

Material

Life-Line Mechanism: Die-cast Mazak 5 handle. Electro-plated SSS finish.
Backplate & Reinforcing kit: 3mm Chamfered mild steel. Electro-plated SSS finish.
Deadlock: Predominantly manufactured from steel.

Fixings

6 lobe pin-torx anti-tamper stainless steel security screws.

Maintenance

Lubrication: RS High Performance Dry Lubricant, RS 251-3794
Cleaning: Proprietary baby oil and soft cloth.

Standards

| ITEM | PART NUMBER | PRIMERA CODE | DHF T001:2013 |
|------|-------------|--------------|---------------|
| 1 | B310501 | LL-Assembly | PASSED A4 |

Certifications

| | | |
|----------------------|-------------------------|--------------------------------------|
| CE: Lockcase: | BS/EN 12209:2013 | [British Standards Institute] |
| Fire Testing: | BS/EN 1634-1 | [Exova Warrington Fire] |



ABOUT HIPAC

We are an Australian healthcare company that guarantees to stand behind all our medical products, both manufactured and imported, because we're here for the life of our products and clients.

PO Box 797, 36 Long St. Goulburn NSW 2580, Australia
P. +61 2 4823 0000 E. info@hipac.com.au

SYDNEY | MELBOURNE | BRISBANE | ADELAIDE | PERTH

hipac.com.au

ABN 27 600 353 688