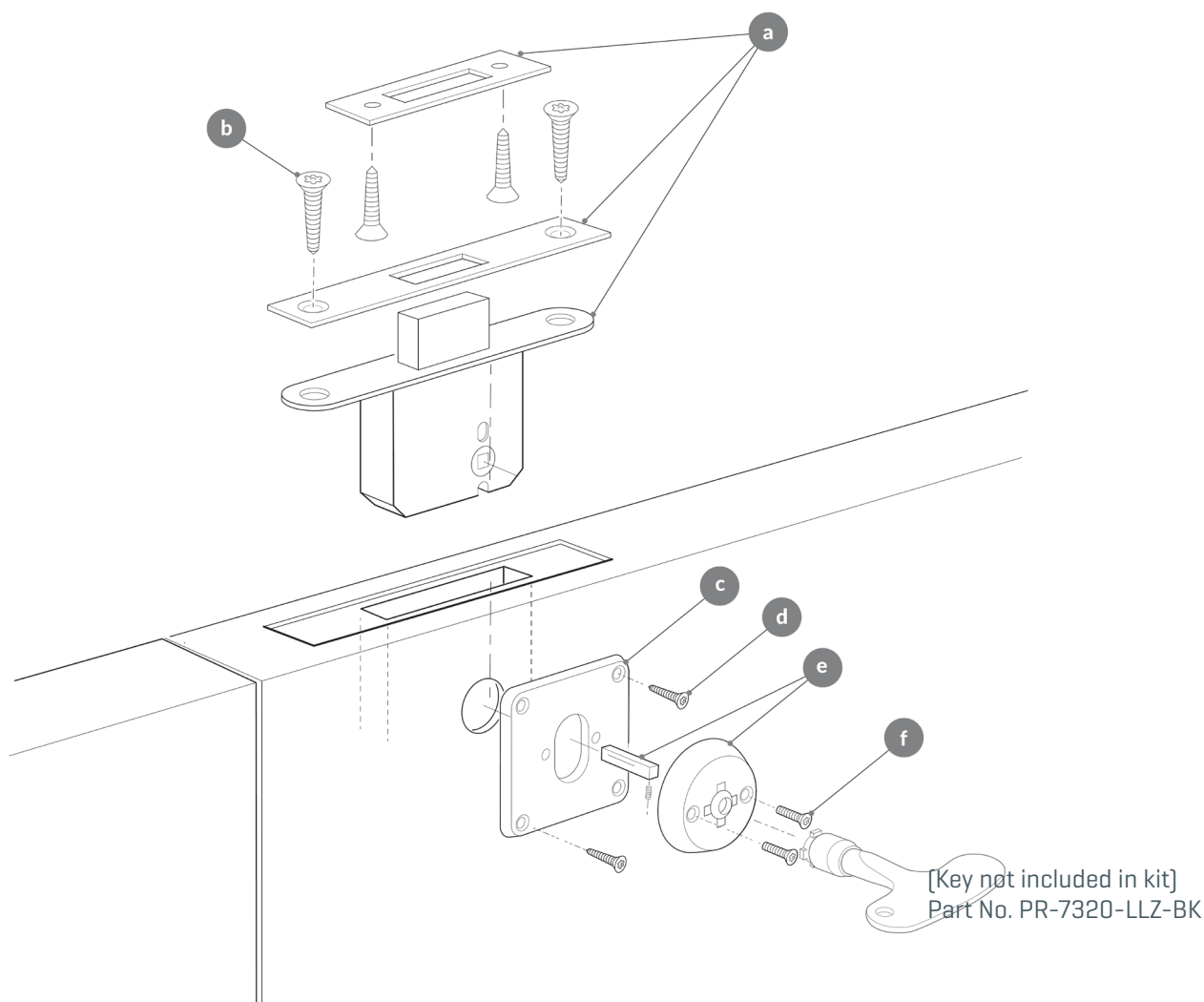




JUNIOR RHINO

Locking for Slave Leaf Doors

Fitting Instructions



Contents List

- a. 76mm [3"] Deadbolt C/W Face Plate and Strike Plate
- b. 4 x 1 1/4" No 8 Lock and Strike Plate Fixing Screws
- c. 70mm x 70mm Escutcheon Plate Assembly
- d. 4 x 5/8" x No 6 Escutcheon Plate Fixing Screws
- e. Life-Line Escutcheon C/W 8mm Spindle and Grub Screw
- f. 2 x M4 x 16 Escutcheon Fixing Machine Screws



Tools Required

- | | |
|---|---|
| a. Drill | i. Hex Socket Screwdriver |
| b. 18mm Auger, Forstner or Flat Steel bit | j. T15 Pin Torx Bit |
| c. 6mm HSS Drill Bit | k. T20 Pin Torx Bit |
| d. 2.0mm HSS Pilot Drill Bit | l. Hammer |
| e. 22mm Flat Bit | m. Tape Measure |
| f. 13mm Flat Bit | n. Pencil |
| g. Chisel 1" | o. 1.5mm Allen Key |
| h. Chisel 1/2" | p. Life-Line Key - Pn. PR7320-LLZ-BK
[not included in the kit] |



= Mark with pencil

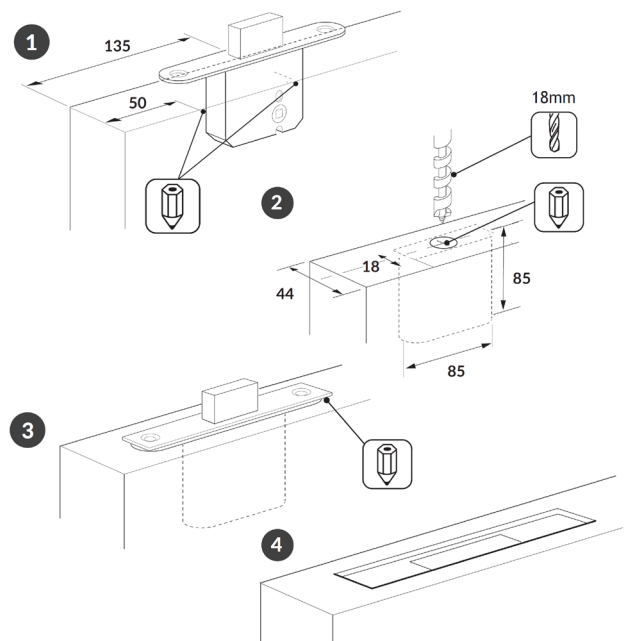


= Drill Pilot Hole

Installation Procedure

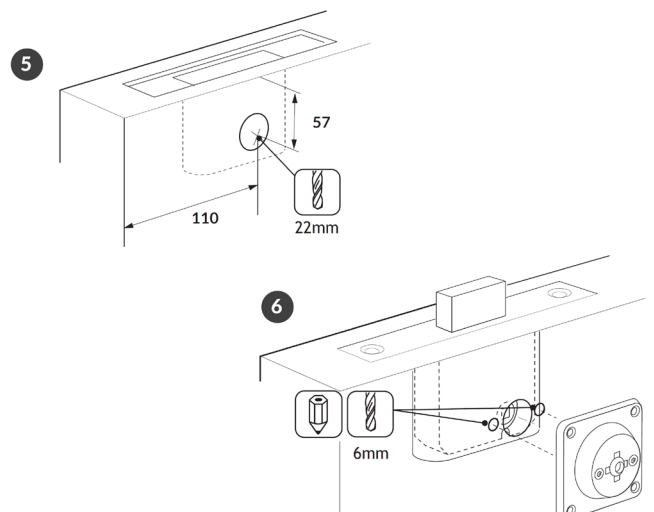
A. Installing Lock in the head of the door

1. Mark the installation position on the top edge of the door. Diagram 1.
2. Carefully prepare a mortice pocket 85mm x 85mm x 18mm. Take care to ensure the mortice is positioned centrally in the door as shown at Diagram 2.
3. Ensure all debris is removed and check the lock sits comfortably within the hole all the way to the back of the fore-end without force.
4. With the bolt extended and the square face plate in position, mark a pencil line around the face-plate as shown at Diagram 3. Remove lock and set aside.
5. Using a chisel remove 4mm of timber inside the pencil line as shown at Diagram 4, to allow the front of the face plate to sit flush with the surface of the timber when lock is in position.



B. Fitting the Escutcheon Assembly

1. Mark a pencil point 57mm from the top of the door and 110mm from the edge of the door as shown at Diagram 5. Using a 22mm flat bit, drill a hole to receive the spindle and key-drive housing. (Not a through hole - drill one side only). Re-fit the lock and check to ensure the hole is perfectly aligned centrally to the square follower.
2. Offer the escutcheon assembly up to the door and mark the position of the protruding machine screws. Drill two appropriate holes (6mm) that will enable the plate to sit flat against the surface of the door as shown at Diagram 6.





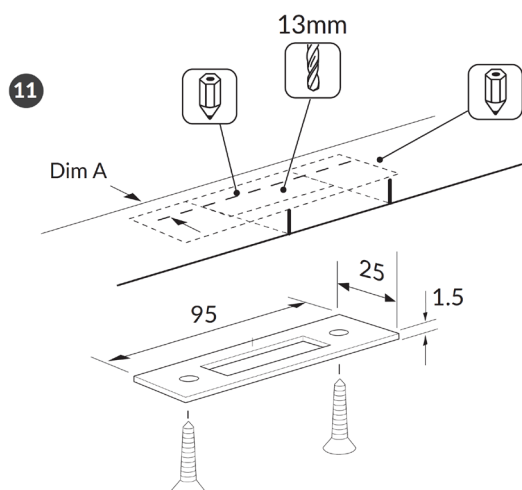
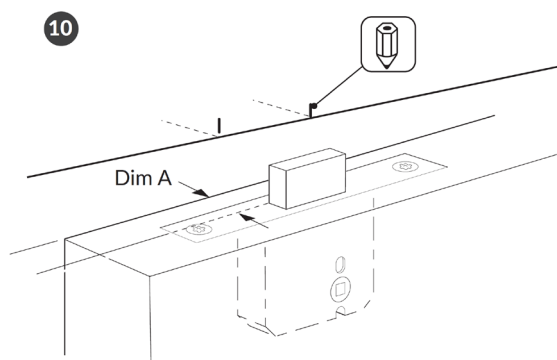
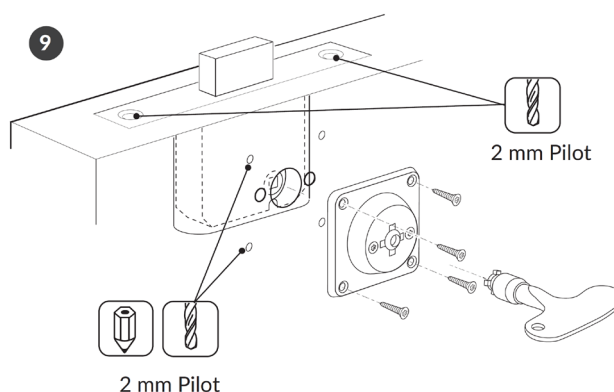
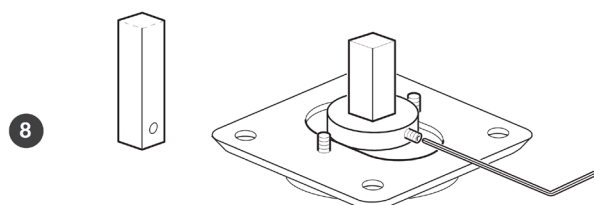
3. Using the spindle formula in figure [7] cut the spindle to the required length, taking care not to trim the end with the through hole. Align the spindle in the escutcheon assembly and secure using grub screw supplied. Ensure that the grub screw is fully tightened using 1.5mm Allen Key as shown at Diagram 8.
4. With key indent at the 12 o'clock position and with the bolt withdrawn, offer the escutcheon assembly on to the door aligning the spindle in to the follower on the lock. Test the key to ensure lock works properly.
5. Using 2mm drill, carefully drill four pilot holes for the plate fixings as shown at Diagram 9.
6. Fasten the escutcheon plate to the door using 4 x 5/8" No 6 screws. The plate must be sat firmly back to the surface of the door to prevent an potential ligature risks.
7. Using the key, operate the lock again to ensure the bolt can be thrown and withdrawn easily.
8. Using the lock fore-end as a guide, pilot drill two holes and secure lock and faceplate in position using 2 1"1/4 No. 8 screws as shown at Diagram 9.

C. Fitting the Flat Strike Plate

1. With the bolt extended, carefully close the door against the frame and mark a pencil line on either side as illustrated at 10. Then, using a Square transfer the lines across the rebate to mark the cut out for the bolt.
2. With the bolt withdrawn, close the door and inspect the door alignment in the frame from the inside taking not of any gap or twist. Then with the door open and bolt extended, measure from the back edge of the door to the back of the bolt as shown at dimension 'A'.
3. Mark dimension 'A' in the frame rebate as shown at Diagram 11 allowing for any gap or twist identified at point 2.
4. Using the markings as a guide, squarely align the strike plate in the frame rebate and draw a pencil line around the rectangular hole for the bolt cut out.
5. Using a 13mm flat bit, drill a hole 17mm deep to remove the bulk of the timber cut out. Afterwards, chisel he residual timber in the corners away leaving a neat rectangular hole.
6. Close the door and throw the bolt to check the alignment is correct before fitting the strike.
7. Carefully align the strike plate over th bolt cut out and mark a pencil line around the plate.
8. Using a chisel, let the strike in to the rebate so that it sits flush with the surface of the timber.
9. Using a 2mm bit, drill four pilot holes for the strike plate fixings and secure the strike into position using the 4 x 1 1/4" No 8 screws supplied.
10. The above technique can be used as a general guide when fitting a strike plate to timber floor.

See next page for installing the lock in the foot of the door.

7 Spindle Formula
Door Thickness $\div 2 + 7\text{mm} = \text{Spindle Lgth}$
Example where door is 44mm
 $44\text{mm} \div 2 + 7\text{mm} = \text{Spindle Lgth of } 29\text{mm}$





D. Installing lock in the foot of the door

Note: Before beginning the installation of the lock in the foot of the door it is important that the followers on the top and the bottom lock are in alignment.

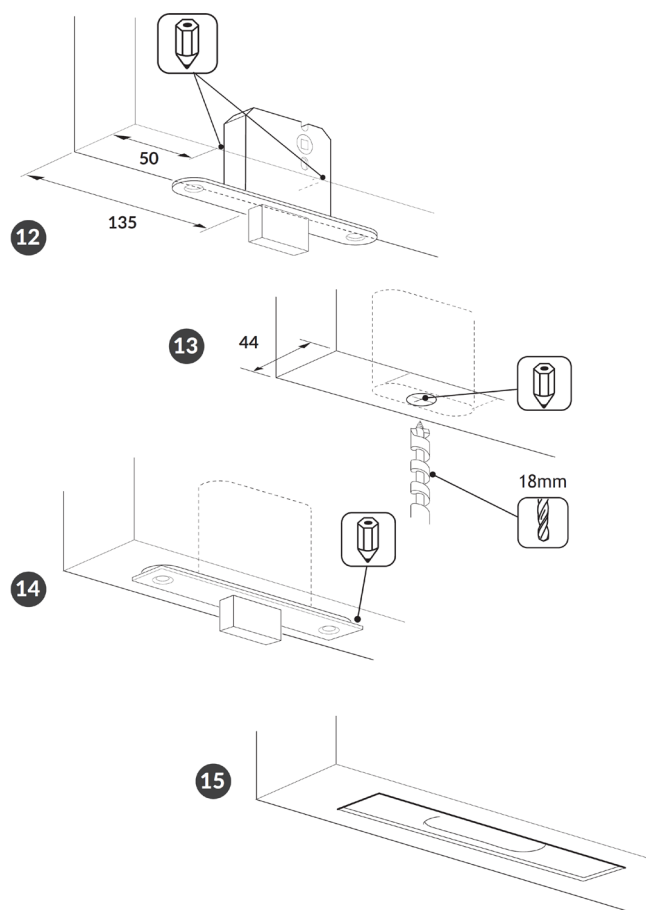
1. Remove the door before fitting the lock.
2. Mark the installation position on the foot of the door. Diagram 12.
3. Carefully prepare a mortice pocket 85 x 85mm. Take care to ensure the mortice is positioned centrally in the door shown at Diagram 13.
4. Ensure all debris is removed and check the lock sits comfortably in the hole all the way to the back of the fore-end without force.
5. With the bolt extended and the square face plate in position, mark a pencil line around the face plate as shown at Diagram 14. Remove Lock and set aside.

E. Fitting the Escutcheon Assembly

1. Follow the installation procedure B illustrated overleaf.
2. Re-hang the door before fitting the strike plate.

F. Fitting the Flat Strike Plate

1. The procedure C on the previous page can be used as a general guide when fitting a strike plate to a timber floor.



ABOUT HIPAC

We are an Australian healthcare company that guarantees to stand behind all our medical products, both manufactured and imported, because we're here for the life of our products and clients.

PO Box 797, 36 Long St. Goulburn NSW 2580, Australia
P. +61 2 4823 0000 E. info@hipac.com.au

SYDNEY | MELBOURNE | BRISBANE | ADELAIDE | PERTH

hipac.com.au

ABN 27 600 353 688