



1 2 3 4 5 6 7 8 9

min | max

LEVEL

CD Player

DN-C615



The DN-C615 offers users all the benefits of a professional-quality single-tray CD player at a very economical price. With up to 99 tracks of program play, the DN-C615 offers a wide range of valuable features, including pitch control and MP3 playback capabilities. The DN-C615 is the ideal solution for schools, churches, small radio stations, and similar venues looking for a high-quality yet affordable CD/MP3 player.

Key Features

- CD-R/RW Playback Compatibility
- $\pm 12\%$ Pitch Control
- Instant Start
- Direct Track Select Buttons
- CD Text
- Auto Cue (Preset Selectable)
- Playback Mode: Single/Continuous (Preset Selectable)
- Elapsed/Remaining Time
- User Preset Functions (22 Items)
- Wired Remote Control Terminal
 - Stereo Mini Jack
 - Synchro Recording to the DN-780R via RCA In/Out (Phillips RC5 compatible)
- MP3 Playback
 - Folder/Title Search
- Shock-Proof Memory (Approximately 10 Seconds)
- Power On Play
- Repeat Mode (Single Track/All Tracks/Program and Random Repeat)
- Random Mode
- Program Play: Maximum 99 tracks
 - A 10-key pad (11 keys including 0/Clear) is provided for direct track selection or to enter up to 99 tracks for programmed playback
 - Frame Search (75 Frames per Second)
- Coaxial RCA Digital Output (SPDIF)
- Headphone Output

General

- Standard 19-inch, 2RU Aluminum Front Panel
- IR Remote Sensor
- FL Tube Display
- Optional IR Hand-Held Remote RC-U620
- Optional IR Wristwatch Remote RC-41
- Optional Wired Remote RC-620

Expanded Connection In/Out (RCA)

Cascade Function (Figure 1)

The ports (CASCADE IN/OUT) of multiple DN-C615 units can be linked by cables to enable continuous playback among the units.

Synchronized Recording (Figure 2)

The ports (EXT. SYNC IN/OUT) of the DN-C615 and multiple DN-780R units can be linked by cables to enable simultaneous recording by all DN-780R units. (Up to 20 units can be connected for continuous recording of the source.)



DN-C615

Specifications

Audio Channel	2 stereo channel
Digital Filter	8-times oversampling digital filter
Frequency Response	20 Hz - 20 kHz
Total Harmonic Distortion	0.007%
S/N Ratio	107 dB (A weighted)
Channel Separation	90 dB or more
Sampling Frequency	44.1 kHz (at normal pitch)
Analog Outputs (1 kHz, 0 dB playback)	
Output Level	2.0 Vrms, 10 kohms
Digital Output	
Transfer and Connector	Coaxial (RCA)
Signal Format	IEC-958 type II (SPDIF)
Power Supply	AC120V, 60 Hz
Power Consumption	13W
Dimensions	482 (W) x 88 (H) x 280 (D) mm 19.0 (W) x 3.5 (H) x 11.0 (D) inch (2 rack units, removable rack ears)
Weight	4.7 kg, 10.4 lbs

Specifications are subject to change without notice.



Figure 1

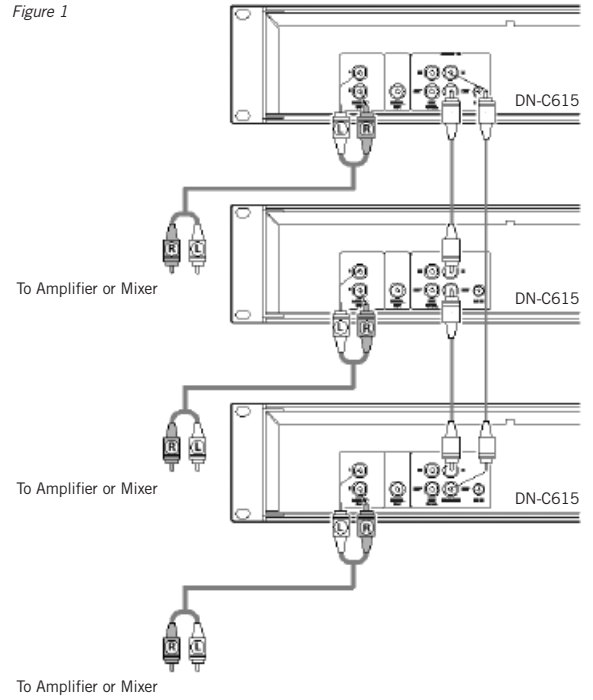
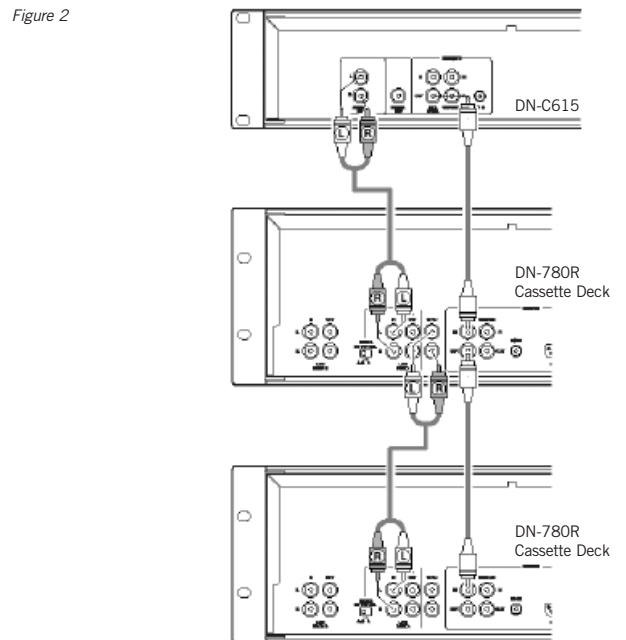


Figure 2



D&M Professional
1100 Maplewood Drive Itasca, Illinois 60143
Tel: 630.741.0330 Fax: 630.741.0652
www.d-mpro.com

© 2004 D&M Professional. All rights reserved.

DENON PROFESSIONAL **marantz** PROFESSIONAL

1 2 3 4 5 6 7 8 9
min | max
LEVEL