

# CaSPA Conference

CROWN CONFERENCE CENTRE MELBOURNE VICTORIA 3 – 5 JULY 2016



# Catholic Super make an educated super choice



OFFICES IN BRISBANE, CANBERRA,  
DARWIN, GEELONG, HOBART,  
MELBOURNE, PERTH & SYDNEY

- Industry super fund returning all profits to members
- Superior long term investment performance
- Fees well below Industry average
- Flexible investment options
- Superannuation and pension products
- Low cost personal insurance
- Financial planning advice



1300 655 002 | [csf.com.au](http://csf.com.au)

Authorised by CSF Pty Limited (ABN 30 006 169 286; AFSL 246664), the Trustee of the MyLifeMyMoney Superannuation Fund (ABN 50 237 896 957). This information is about the Fund and is general information only. It has been prepared without taking into account your personal investment objectives, financial situation or needs. It is not intended to be, and should not be construed in any way as, investment, legal or financial advice.

CS220 111215

## CaSPA MAJOR NATIONAL PARTNERS

---



## CaSPA GOLD NATIONAL PARTNERS

---



## GOLD

---



SEQTA





## WELCOME RECEPTION



## SILVER



## Message from the National Chair

Dear Conference Colleagues,

On behalf of the National Directors of Catholic Secondary Principals Australia, I extend to you a very warm welcome to our National CaSPA Conference for school and system leaders within Catholic Education. The theme of our Association's Biennial Conference is: *Live in the Light – Open your Heart – Sing a New Song*.

The Conference Planning Committee has prepared a varied program within which delegates can engage fully with this year's theme. The program invites delegates to explore aspects of the faith, culture and traditions of our Catholic Church from the variety of perspectives and experiences presented by the Keynote Speakers and the Concurrent Sessions.

This year's theme builds on the optimistic and confident approach that we all share for the future of Catholic Education across Australia. There will be four keynote speakers of international standing who will unpack this theme from their own particular world views. The concurrent session convenors will also tap into this rich theme. Overall, I am confident that the three days of conference proceedings will be rewarding, challenging and very enriching.

On the evening of Sunday July 3 conference delegates gather on the 89th floor of Melbourne's famed Eureka Tower for a cocktail reception. Conference sessions will take place at Crown Conference Centre: a venue ideally suited to a conference such as ours. On the evening of Tuesday July 5 we will gather at St Patrick's Cathedral for the Conference Mass and this will be followed by the Conference Dinner at the MCC Dining Room.

I trust that conference delegates will enjoy all that Marvellous Melbourne has to offer in July. Members of the Conference Planning Committee have given so generously of

their time and expertise in bringing this program together. The Committee is confident that you will find the conference program to be a timely, challenging and worthwhile experience. I hope you will join me in thanking and congratulate the committee for all their efforts.

I encourage all delegates to attend the Welcome Reception and the Conference Dinner. Networking in a collegial atmosphere has been a feature of our CaSPA conferences and this year will be no exception to that collaborative spirit.

Finally I acknowledge, with great appreciation, the generous and loyal support of our sponsors who are listed within this brochure. I encourage all participants to visit their stalls during the conference.

Enjoy the Melbourne conference and take this wonderful opportunity to network with colleagues and learn from the quality presentations.



Yours sincerely,

Phil Lewis

CaSPA National Chair





Your local choice in

# School Photography

Since 1991 MSP Photography has been Australia's trusted name in School Photography.

MSP Photography is Australia's leading school photographer because our 25 locally-owned businesses are 100% focused on our schools.

When you choose MSP Photography you're dealing with local people and families that have local knowledge and local understanding. We support and genuinely care about the students we photograph, our schools and the communities in which we live and work.

We combine the friendly personal experience you expect from a small business with the resources to produce over a million school portraits a year.

With MSP Photography, you can choose a local school photographer who knows how to get it right, and has the track record to prove it.

School photography **made simple**

P 1800 069 976 | E [info@msp.com.au](mailto:info@msp.com.au) | [www.msp.com.au](http://www.msp.com.au)





## Welcome from the Chair of the Organising Committee

Dear Colleagues,

On behalf of the Organising Committee, I invite Principals and members of leadership teams from Catholic primary and secondary schools as well as senior staff from Catholic Education Offices and Congregational Education Bodies from around Australia and overseas to Melbourne in July 2016.

The conference will be conducted at the Crown Conference Centre located on the south bank of the Yarra River. The conference will commence with a Welcome Cocktail Reception on the 89th floor of the Eureka Tower providing panoramic views of Melbourne.

The conference will then conclude with a Conference Mass to be celebrated by Bishop Mark Edwards at St Patrick's Cathedral followed by dinner at the MCG dining room.

The theme of the 2016 conference is: *"Live in the Light – Open your Heart – Sing a New Song"* The conference will be centred on four key note presentations by internationally respected writers and theologians:

- Most Rev Mark Edwards OMI, Auxiliary Bishop within the Archdiocese of Melbourne.
- Sr Sheila Flynn OP, Director the Kopanang Community Trust, Tsakane South Africa
- Dr Amy-Jill Levine, University Professor of New Testament and Jewish Studies, E. Rhodes and Leona B. Carpenter Professor of New Testament Studies, Professor of Jewish Studies Divinity School and College of Arts and Science Vanderbilt University.
- Dr Ronald Rolheiser OMI, Director the Oblate School of Theology, San Antonio Texas.

There will also be a number of concurrent sessions conducted over the two days linking back to the theme of the conference. All four keynotes will be involved in these concurrent sessions along with the following internationally renowned and respected presenters:

- Rev Professor Francis Moloney sdb AM, Director Centre for Biblical and Early Christian Literature, Institute for Religion and Critical Inquiry ACU
- Ms Julie Morgan, Senior Consultant and Lecturer – Organisational Development, Executive Education ACU.
- Rev Professor Peter Steane msc, Professor of Strategic Management and Head of Business, Sydney ACU.

Opportunities for collegiality, professional dialogue and exploring Melbourne's places of interest will also be available to you. I can also guarantee you an AFL match will be on!

The Organising Committee looks forward to warmly welcoming you to Melbourne.



**Dr Andrew Watson**

Conference Committee Chair





• **DESIGN** •

**MANUFACTURING**  
**RETAIL LOGISTICS**  
**NATIONAL**  
**DISTRIBUTION**

---

**PREMIUM**  
**SCHOOL WEAR**

.....

CaSPA Major Business Partner



CATHOLIC SECONDARY PRINCIPALS AUSTRALIA

**PSW Head Office &  
Distribution Centre**

Factory 1, 46 - 54 Letcon Drive  
Bangholme VIC 3175  
Phone: (03) 9768 0333  
[www.psw.com.au](http://www.psw.com.au)

.....







### We hope that all conference delegates will:

**Live in the light** of hope, joy and optimism. **Leave with open hearts**, inspired, renewed and ready to embrace the future with hope. **Sing a new song** as we embrace the future with new understanding of our faith, our church, our role as educational leaders and our world.

### Contents

CaSPA Partners and Sponsors List.....	2
Message from the National Chair.....	5
Welcome from the Chair of the Organising Committee.....	7
Conference Hopes .....	9
Conference Facilitator: Philomena Billington.....	10
Keynote Presenters: Rev Mark Edwards, Sr Sheila Flynn, Dr Amy-Jill Levine, Dr Ronald Rolheiser .....	11
Program.....	17
Concurrent Sessions: Sr Sheila Flynn, Dr Amy-Jill Levine, Rev Prof Francis Moloney, Ms Julie Morgan, Rev Peter Steane .....	19
School Visits .....	25
General Information.....	28
Registration Form .....	33
Payment and Contact Details.....	37

## Education is what makes us tick



**GOLD  
SPONSOR**

While you're helping to shape the future leaders of tomorrow, we're here to help you make the most of your financial health and wellbeing. **Teachers Mutual Bank is proud to be a Gold sponsor of the Catholic Secondary Principals 2016 conference.**

Ask us how\*  
**tmbank.com.au** or **13 12 21**

**Teachers  
Mutual Bank**  
We put you first

\*If you are an employee in the Australian education sector, or are a family member of a Teachers Mutual Bank Limited member – you can join Teachers Mutual Bank. Teachers Mutual Bank Limited ABN 30 087 650 459 AFSL/Australian Credit Licence 238981 | 008745-BRM-1115-CSPC-148.5x210

## Conference Facilitator

### Philomena Billington, Ministry Without Borders

Phil is an educator and leader with over 43 years' experience in Catholic and Government education across 5 dioceses and 4 states of Australia, teaching in remote, rural and city locations and has led curriculum design and development, including the publication of two Religious Education Curriculum documents in two dioceses.

Phil retired as Director of Catholic Education in the Diocese of Sandhurst in Central Victoria at the end of 2014 where she had also previously been Deputy Director in Sandhurst with specific responsibility for Catholic Identity and Stewardship.

Phil is passionate about education and especially in rural Australia, the Arts in education, parents as key partners and lay ministry within the Catholic Church.

Phil is a passionate advocate for tertiary courses in education and assisting graduates and under-graduates to be fully prepared for the privileged ministry of teaching.

Phil is committed to supporting young people living with disability and encouraging a more inclusive society. She is passionate about encouraging and supporting Catholic education.

To enable this work Phil has established

Ministry Without Borders which will ensure that pro bono support for parishes is possible whilst still contributing to the educational mission.



# anzuk\*

## Quality assured recruitment of Support, Teaching and Leadership staff.

## Proudly supporting CaSPA

## Call 1300 136 260

[www.anzukteachers.com.au](http://www.anzukteachers.com.au)



## Open Your Heart: 2016, The Year of Mercy

### Most Rev Mark Edwards OMI, Auxiliary Bishop, Archdiocese of Melbourne

Born the eldest of four children to a family in the oil industry, Mark Edwards moved frequently in his youth. His family eventually settled in Glen Waverley, Melbourne, where he completed Grade 5 and 6 at St Leonards and his secondary education at Mazenod College. After completing a Science degree at Monash University in 1979, Mark joined the Oblates and was ordained a priest in 1986. He gained a Bachelor of Theology and Diploma of Education during this time.

Fr Mark's priestly appointments have all involved education. He was a teacher at both Mazenod College, Mulgrave, and Iona College, Brisbane and held middle management positions as Co-Ordinator of Religious Education, Mathematics and Year 8 at various times. After 11 years of teaching, Fr Mark was involved for 13 years in priestly formation holding a variety of roles in this area at St Mary's Oblate Seminary. He gained a PhD in Philosophy through Monash University and did a little tertiary lecturing at Catholic Theological College, East Melbourne. He was then reappointed to Iona College, Brisbane, as principal in 2011. This concluded with the announcement of his appointment as Auxiliary Bishop of Melbourne in November 2014.

Bishop Mark values the Church and community very highly and he self-identifies as being a missionary.

While Bishop Mark is still working out what an Auxiliary Bishop does, he believes that the core of the role is to be a living witness to the Resurrection of Christ and he is awed at the experience of being a minister of the Holy Spirit particularly through the sacraments of Confirmation and Orders.

**Abstract:** The Holy Year of Mercy commenced last year on the Solemnity of the Immaculate Conception and concludes on the Feast of Christ the King on 20 November this year. It has been celebrated throughout the world bringing mercy and the accompanying themes of love, compassion and forgiveness into focus.

Mercy is very practical. Our Catholic Schools have a strong tradition of the practical application of Mercy. Sometimes we have also "got it wrong". Our experience of receiving and giving this freeing mercy can greatly influence the culture of a school community. What has our community's concrete experience of mercy been?

Sometimes the 'Year of ...' celebrations disappear without much of a trace. Let that not be the case with the Year of Mercy. Almost half of the year of mercy remains; there is still more good that can come of this. This graced time is an invitation to us and our communities to take another step; to review what is happening, to learn from this reflection, to celebrate success and to refocus for the future.

An "Audit of Mercy" in our schools would both be profoundly moving in what has been achieved and challenging about the ways in which we have fallen short. Images, gestures and stories, particularly scriptural ones, can move our community's culture so as to be more Christ-like in this aspect.

Principals are in a privileged position to promote, express and incarnate mercy in their schools.





## Dismantling Privilege:

### The Discipline of Living Light in the Spirit

**Sr Sheila Flynn OP**, Director Kopanang Community Trust,  
Tsakane South Africa

Sheila Flynn joined the Dominican Sisters in London, England, in 1969. In 1988 Sheila was missioned to South Africa where she studied Fine Arts at the University of Johannesburg (then called Witwatersrand Technikon) obtaining distinction in printmaking, sculpture and theory, where she also trained as a teacher in the visual arts. She founded the first academic support programme there for black students, as well as the first papermaking research unit.

Sr Sheila lectured for 8 years at this tertiary institute before going into full time development work. Sr Sheila remains a practising artist. Her work has been exhibited in South Africa, the United Kingdom, Germany, Australia, India, Switzerland and the United States. Responding to the deep need for women's empowerment within a climate of HIV/AIDS where loss and struggle are part of everyday life, Sr Sheila founded the Kopanang Community Trust (situated 55 km south east of Johannesburg), a project that addresses these critical needs in life-giving and creative ways, within the context of a faith-building community.

Sr Sheila is a member of the Dominican Sisters of Eastern Australia and the Solomon Islands and remains missioned in South Africa, living in the black township of Tsakane, representing the Congregation there.



**Abstract:** As Christians, and importantly as educators, we share the awesome responsibility of effecting radical interdependence and mutual co-creation as God's own people. [Cf Pope Francis 'Laudate Si']. I would like to explore this dimension of 'being' in our world through our baptismal calling to be light, to effect transformative justice, to be harbingers of Good News that effects joy and shakes and disturbs us to the core.

Through employing visual commentary, protest poetry and some related music, I hope to celebrate those life-giving ways that already effect transformation in our schools and commitments to the broader world. As well, I hope to show that these ideas will disturb us enough into becoming more deeply aware of how we tread this world of enormous privilege in the developed world and bring us to ask ourselves serious questions about the way we are complicit in maintaining injustice in subtle and not so subtle ways.

'Living in the light' has direct consequences for the way our behaviours shape the world. If we are not making a difference, we should be – our privilege is our resource for service, bearing witness in our fractured world of scarcity and violence. The unearned advantage of being part of a privileged developed country begs Gospel responses that go way beyond social commitments and geography and determine who we are. Come live in the light! Now is the right time!

*... If we are not making a difference, we should be – our privilege is our resource for service, bearing witness in our fractured world of scarcity and violence ...*



USED IN OVER 1400 SCHOOLS

FULLY WEB-BASED

SINGLE INTEGRATED APPLICATION

INTUITIVE, EASE OF USE

#### TEACHER BASED MODULES

- Assessing & Reporting
- Class Attendance
- Period by Period Attendance
- Timetabling
- Enrolments
- Messaging
- Student Wellbeing
- Student Profile
- Continuum Tracking
- Student Plans
- Curriculum Reference
- Moodle
- School Planning
- Fees & Billing

#### STUDENT & PARENT MODULES

- Messaging System
- Projects & Resources
- Student Activities
- School bulletins / Daily notices
- Customisable Student Records
- Updating of family details
- Student Wellbeing
- Student Plans
- Parent Teacher Bookings

**SAVE TIME  
SAVE SPACE  
SAVE MONEY**

#### THE SMART STACK SYSTEM

- Save up to 75% space Guranteed
- No Capital Expenditure
- O.H. & S. Friendly
- No shelving required
- ALL Documents accessible ALL the ti
- Find any document in minutes



The School  
Archive  
Specialists

1300 889 837



Let HARVEST INROADS design your school's study trip or mission immersion. Join us to explore our wonderful world with the guidance of our expert planners and professional coordinators.

#### STUDY TOURS

#### STAFF DEVELOPMENT

#### MISSION IMMERSIONS

#### ALTERNATIVE SCHOOLIES



**jacaranda**  
A Wiley Brand

Secondary  
Publisher  
of the Year

4  
YEARS IN A ROW

2012 | 2013 | 2014 | 2015



www.inroads.net

info@inroads.net

FREE PHONE 1800 819 156

## Walking in the Light... and in the Darkness

**Dr Amy-Jill Levine**, University Professor of New Testament and Jewish Studies, E. Rhodes and Leona B. Carpenter Professor of New Testament Studies, Professor of Jewish Studies Divinity School and College of Arts and Science Vanderbilt University.

Amy-Jill Levine is Professor of New Testament and Jewish Studies, E. Rhodes and Leona B. Carpenter Professor of New Testament Studies, and Professor of Jewish Studies at Vanderbilt Divinity School and College of Arts and Sciences. Holding a BA from Smith College an MA and Ph.D. from Duke University and an honorary doctorate of Ministry from the University of Richmond, Amy-Jill Levine has been awarded grants from the Mellon Foundation, the National Endowment for Humanities and the American Council of Learned Societies.

Dr Levine is an internationally respected Biblical scholar and has written widely on various areas of Biblical study. One of her most widely known books is *"The Misunderstood Jew: the Church and the Scandal of the Jewish Jesus"*. Dr Levine has held office in the *"Society of Biblical Literature"*, the *"Catholic Biblical Association"* and the *"Association for Jewish Studies"*. A self-described *"Yankee Jewish feminist who teaches in a predominantly Christian Divinity school in the buckle of the Bible Belt"*, Professor Levine combines historical-critical rigor, literary-critical sensitivity, and a frequent dash of humour with a commitment to eliminating anti-Jewish, sexist and homophobic theologies.



**Abstract:** In the first act of creation, G-D proclaims, "Let there be light" (Genesis 1.3). Psalm 27.1 exults, 'The LORD is my light and my salvation.' According to John's Gospel (8.12; 9.5), Jesus is the "light of the world." Proverbs 6.23 announces, "For the commandment is a lamp and the teaching a light." Isaiah 42.6 instructs, "I have given you as a covenant to the people, a light to the nations." According to Matthew's Gospel (5.14), the followers of Jesus are the "light of the world." Yet we cannot walk fully in the light, for total light would rob us of sight. Indeed, we are not fully in the light, for 'now we see in a mirror, dimly' (1 Cor 13.12).

It is also in the dark where the divine is found (Exodus 20.21; Deuteronomy 5.22-23; and 1 Kings 8.12). In the dark night of the soul we grow to spiritual maturity. With "prayers in the darkness" (Pope Francis's morning meditation in the chapel of the Domus Sancta Marthae, 3 Oct 2014) we, like Job and Jeremiah, express our despair, and our faith.



Protecting you since 1911

- ◆ Insurance
- ◆ Risk Management
- ◆ Workers' Compensation
- ◆ Personal Insurance
- ◆ Asset Management

[www.ccinsurance.org.au](http://www.ccinsurance.org.au)  
1800 011 028

[www.risksupport.org.au](http://www.risksupport.org.au)  
1300 660 827





# woods furniture

We believe that education is of the utmost importance – not just for the children of today but for our world tomorrow.

This belief has driven our team, for over half a century, to study how children learn – from a behavioral, ergonomic and cognitive perspective – to develop furniture that is flexible, adaptable and stimulating.

To find out more about our innovative range of educational furniture visit [woods furniture.com.au](http://woods furniture.com.au) or call 1800 004 555.

**We're for flexible learning**



# simon

web based solutions for schools

## Relevant technologies Designed by schools, for schools

SIMON was developed as a collaborative project in the Ballarat Diocese and is now being used in both secondary and primary schools throughout Australia

## Edval Timetables – builds and seamlessly integrates your school timetable



**EdvalDaily**



**Edval**



**EdvalStaff**



**WebChoice**



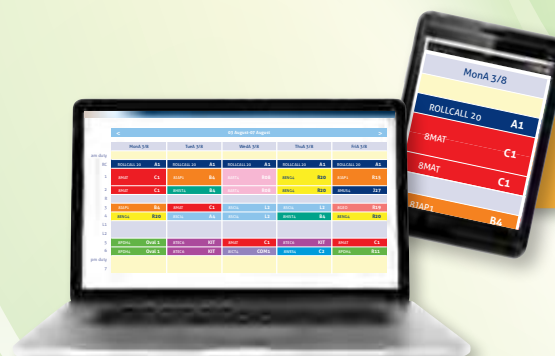
**EdvalPTN**



**EdvalKiosk**

*"I am amazed.  
Our new timetabler had  
no previous timetabling  
experience and had to  
learn a new program and  
produce a timetable within  
four weeks. She achieved a  
fantastic result with Edval."*

Amanda Parslow,  
Director of Curriculum,  
Tenison Woods College, SA



**Call to find out more or  
email [sales@edval.com.au](mailto:sales@edval.com.au)**

**edval**  
[www.edval.com.au](http://www.edval.com.au)

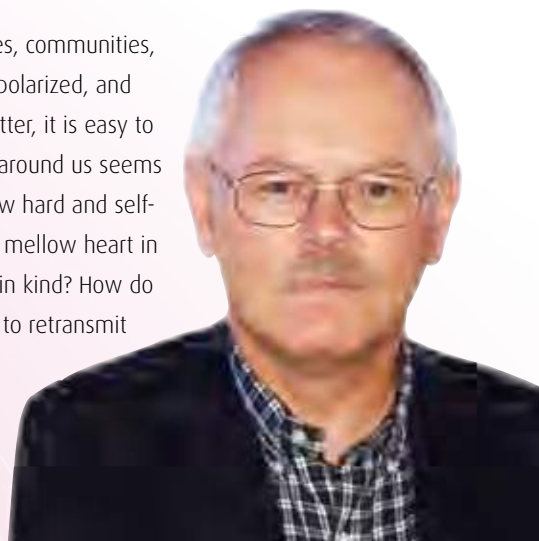
Sydney 02 8203 5455 | Melbourne 03 9020 3455  
Adelaide 08 8120 0855 | [sales@edval.com.au](mailto:sales@edval.com.au)

## Singing a New Song - Keeping a Mellow Heart in a Bitter Time.

**Dr Ronald Rolheiser OMI**, Director Oblate School of Theology, San Antonio Texas

Ronald Rolheiser, a Roman Catholic priest and member of the Missionary Oblates of Mary Immaculate, is President of the Oblate School of Theology in San Antonio Texas, a position he has held since 2005. He received his doctorate at the University of Louvain and is a member of the Catholic Theological Society of America, the Canadian Theological Society and the Religious Studies Association of Alberta. He is a specialist in the fields of spirituality and systematic theology. He is also a community builder, lecturer and writer. His books are popular throughout the English speaking world and his weekly column is carried by more than seventy newspapers worldwide. His latest book "*Sacred Fire*" was named the "*Top Book in Spirituality*" in the USA in 2015. Fr. Ron still is very involved in the life of his large extended family and most Christmases you will find him in his home church, St. Donatus, near the former family farm in Cactus Lake, Saskatchewan. Fr. Ron is also known for his commitment to prayer and exercise, a continuing love of sports, his sense of humour, his loyalty to his friends, and the enjoyment of the odd cigar and the odd scotch.

**Abstract:** We live in bitter times. Families, communities, churches, and nations are torn, divided, polarized, and wounded. When the air we breathe is bitter, it is easy to grow bitter ourselves. When everything around us seems hard and self-protective, it is easy to grow hard and self-protective ourselves. How do we keep a mellow heart in a bitter time? How do we not give back in kind? How do we transform negative energy so as not to retransmit it? How do we become instruments of peace and unity? *We must never grow weary of doing what is right.*



Research-based solutions to improve student outcomes.



STAR  
Assessments



Accelerated  
Reader



Accelerated  
Maths

Learn more at  
[www.renaissance.com.au](http://www.renaissance.com.au).

© 2015 Renaissance Learning, Inc.  
Logos, designs, and brand names are  
trademarks of Renaissance Learning, Inc.

30524.1015

Flip your classroom and engage your students with the new ClickView Interactive Videos



Visit our website today at  
[clickview.com.au/interactive](http://clickview.com.au/interactive)  
to request a free 30-day trial!

**What was Egypt's annual food called?**

- ☐ The Inundation
- ☐ The Gift of the Nile
- ☐ The Flood

**The nearest sea to Egypt is the Coral Sea**

- ☐ True
- ☐ False

Continue

For more information, feel free to contact us on 02 9509 2600 or at [info@clickview.com.au](mailto:info@clickview.com.au)

ClickView

## Program

Sunday 3 July 2016			
2.30 – 4.30 pm	Registration at Crown Conference Centre.	10.30 am	<b>Keynote Address 2</b> <b>Dismantling Privilege: The Discipline of Living Light in the Spirit.</b> Sr Sheila Flynn OP, Director Kopanang Trust, Tsakane South Africa.
4.30 pm	Welcome to Country. Opening Liturgy. Official Opening of the 2016 Conference. Introduction of the Conference Facilitator, Philomena Billington. Address by Dr Andrew Watson Chair, Conference Committee and Principal, Thomas Carr College, Tarneit, Vic. Address by Mr Phil Lewis, CaSPA National Chair and Principal, Nazareth College, SA.	11.45 am	<b>Concurrent Session A</b> <b>A1 Creativity and the Divine,</b> Sr Sheila Flynn OP. <b>A2 To Love as Jesus has Loved: Reading John 13:1-38.</b> Rev Professor Francis Moloney sdb AM. <b>A3 Living in the Light: Generative Leadership and Another Way of Looking at Social Justice in the School Community.</b> Ms Julie Morgan. <b>A4 Open Your Heart: Strategic Leadership – Spirituality, Mysticism and Art.</b> Rev Peter Steane MSC. <b>A5 Sing a New Song, and You'll have the Key.</b> Dr Amy-Jill Levine. <b>A6 Opening the Heart beyond its Aching - Moral Loneliness in our Lives: The Deeper Reality Beneath Our Longing for a Soulmate.</b> Dr Ronald Rolheiser OMI.
5.30 pm	Walk to Eureka Towers.	12.45 pm	Lunch with Trade Exhibitors.
6.00 pm	Welcome Reception at Eureka Towers.	1.45 pm	School Visits (Please register for these on the Registration Form).
8.00 pm	Free evening.	5.00 pm	Return to Crown Promenade Hotel, informal networking drinks/happy hr.
Monday 4 July 2016		6.00 pm	Day concluded/free evening.
8.00 am	Registration continues.		
8.45 am	Introduction for the day by Facilitator, Philomena Billington. Morning Prayer.		
9.00 am	<b>Keynote Address 1</b> <b>Open Your Heart: 2016, The Year of Mercy.</b> Most Reverend Mark Edwards OMI.		
10.00 am	Morning Tea with Trade Exhibitors		



## Program

7.30 – 8.15 pm	<b>Optional Session</b> A Walk Through the Kopanang Cantic of the Universe. Sr Sheila Flynn OP.		
<b>Tuesday 5 July 2016</b>			
8.45 am	Introduction for the day by Facilitator, Philomena Billington. Morning Prayer.		
9.00am	Principal Well Being and Risk Mitigation. Catholic Church Insurances.		
9.45 am	<b>Keynote Address 3</b> Walking in the Light... and in the Darkness. Dr Amy-Jill Levine.		
10.45 am	Morning Tea with Trade Exhibitors.		
11.15 am	<b>Keynote Address 4</b> Singing a New Song - Keeping a Mellow Heart in a Bitter Time. Dr Ronald Rolheiser OMI.		
12.15 pm	Lunch with Trade Exhibitors		
1.15 pm	<b>Concurrent Session B</b> (Session A repeated).  <b>B1</b> Sing a New Song, and You'll have the Key, Dr Amy-Jill Levine.  <b>B2</b> To Love as Jesus has Loved: Reading John 13:1-38. Rev Professor Francis Moloney sdb AM.	<b>B3</b> Living in the Light: Generative Leadership and Another Way of Looking at Social Justice in the School Community. Ms Julie Morgan.  <b>B4</b> Open Your Heart: Strategic Leadership – Spirituality, Mysticism and Art. Rev Peter Steane MSC.  <b>B5</b> The New Song of Pope Francis. Most Rev Mark Edwards OMI.  <b>B6</b> Creativity and the Divine. Sr Sheila Flynn OP.	
		2.15 pm	Afternoon tea with Trade Exhibitors.
		3.00 pm	Panel Session with all presenters (Q & A Style) Sponsors Raffle Draw and conference close Promotion of the 2018 Conference.
		4.00 pm	Free time in preparation for Cathedral Service and Conference Dinner.
		5.15 pm	Buses depart for St Patrick's Cathedral from Crown Promenade Hotel.
		6.00 pm	Conference Eucharist at St Patrick's Cathedral.
		7.00 pm	Buses depart from St Patrick's Cathedral for Melbourne Cricket Ground.
		7.15 pm	Conference Dinner at the Melbourne Cricket Ground.
		11.00 pm	Buses depart MCG for Crown Promenade Hotel.

## A1/B6 Creativity and the Divine

**Sr Sheila Flynn**, Director Kopanang Community Trust,  
Tsakane South Africa.

*"Every believer in this world of ours must be a spark of light, a centre of love, a vivifying leaven amidst all those they are present to". John XXIII*



**Abstract:** This concurrent section will look at God's shaping in us, that creative, ever-transforming, ever-converting call to wholeness and mission through the prism of art. The job of the artist is always to deepen the mystery, to connect us with the extravagant Divine outpouring at the dawn of creation with the visual, contemplative gaze that renders our world sacramental.

This focus confronts us with issues of integrity, dignity and responsibility. Through creative expression art has the power to communicate the continuum of life, creating threads that link together past, present and future, explicating a world at-one-with-God, yet incomplete and still to come. The dynamic energy of the Spirit is always creative, always generative. We are charged with being fully alive in the Spirit. The exhibition, the Kopanang Universe Canticle, for the duration of the CaSPA Conference is one result of this focus.

*... The job of the artist is always to deepen the  
mystery to connect us with the extravagant Divine outpouring  
at the dawn of creation with the visual, contemplative gaze that  
renders our world sacramental ...*

### Uncover new opportunities at every stage of the student lifecycle

At Fuji Xerox Australia, we are here to assist schools uncover new ways to improve operations. Through effective technology and more efficient workflows, we can help you and your staff to focus on achieving student outcomes.

"In 2012, we spent a six figure sum on paper, toner and other peripherals, but in 2013 we reduced that by 40 per cent in the first year. Last year is about the same, so it's a significant change."

*Mark Glover, Business Manager at Genazzano FCJ College*

To find out more about why our customers choose our solutions visit [www.fujixerox.com.au/education](http://www.fujixerox.com.au/education) or call 1300 164 966.

Xerox, Xerox and Design, as well as Fuji Xerox and Design are registered trademarks or trademarks of Xerox Corporation in Japan and/or other countries.

## WE CREATE THE SPACE TO LEARN AND GROW

As experts in learning areas, we create inspiring spaces so every student feels comfortable, inspired and motivated to learn.

**furnware**  
create the space to learn and grow

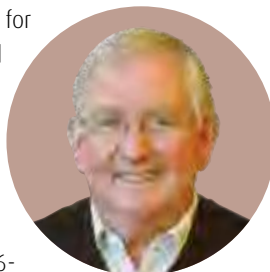
[www.furnwareaus.com.au](http://www.furnwareaus.com.au)  
1800 133 155





## A2/B2 To Love as Jesus has loved: Reading John 13:1-38

**Rev Professor Francis Moloney sdb AM**, Director of the Centre for Biblical and Early Christian Literature in the Institute for Religion and Critical Inquiry at Australian Catholic University. Francis J. Moloney, SDB, AM, FAHA, was born in Melbourne, Australia, and joined the Salesians of Don Bosco in 1960. After completing his theological and biblical studies in Rome (STL, SSL), he was awarded a Doctorate in Philosophy at the University of Oxford in 1976. Since then he has had major teaching roles at the Catholic Theological College (1976-1993), and in Australian Catholic University, where he was the Foundation Professor of Theology (1994-99). In 1999 he was appointed the Professor of New Testament at the Catholic University of America, Washington, DC. He was elected the Dean of the School of Theology and Religious Studies at CUA in 2003. He returned to Australia and took on the role of the Provincial of the Salesians of Don Bosco in Australia and the Pacific from 2006-2011. He has returned to ACU, where he is a Senior Professorial Fellow, and the Director of the Centre for Biblical and Early Christian Studies. Professor Moloney has taught widely in Europe, the United States, Israel, and Australia. He is the author of more than 50 books, and numerous articles in both scholarly and popular. The theme of his presentation at the CaSPA Conference reflects the results of his recent study: *Love in the Gospel of John. An Exegetical, Theological, and Literary Study* (Grand Rapids: Baker Academic, 2013). In 1992 he became a member of the Order of Australia, and in 1994 a Fellow of the Australian Academy of the Humanities.



**Abstract:** According to Gospel of John, we live in the light and “*have the light of life*” (John 8:12; 9:5), open our hearts in the joy and peace that only God can give (14:27; 16:23-24), and we sing a new song (see Rev 5:9; 14:3), because we know God and the one whom he has sent (John 17:3). But do we? Our Holy Thursday liturgy tells of Jesus’ washing the feet of his disciples, asking them to live the example their master has given them (13:1-15). But there is more to it. Read, heard, and experienced as a whole, John 13:1-38 is an inspired testimony to the person of Jesus who makes known a God who is love (John 3:16; 1 John 4:8, 16), through two symbolic actions of loving self-gift that point forward to the glory of the cross (see John 3:14; 8:28; 12:32; 19:30). The familiar washing of the feet (13:1-17), is matched by the less well known, and surprising, gift of the morsel (13:21-38). Speaking to disciples whom he has called and sent out in his name, he recognizes their frailty (13:18, 20), but makes an exquisite experience of love known to them, so that they might come to recognize that he makes known the source of all true love: God (v. 19): “*I tell you this now, so that when it happens, then you will know that I AM HE.*”

**INDOOR  
&  
OUTDOOR**

Universal Access aquaBUBBLER	Classic aquaBUBBLER	Water Bottle Refill station
<p>* aquaBUBBLER drinking fountains are <b>innovatively 21st century</b> – the perfect hydration solution for your school or workplace. aquaBUBBLER’s colourful, contemporary design appeals to everyone!</p> <p><b>Water-efficient</b>, hygienic, and vandal and graffiti-resistant, aquaBUBBLERs are also low-maintenance.</p>	<p>aquaBUBBLERs are <b>manufactured in Australia</b> and are extremely durable. They are 100% recyclable: with no part ending up in landfill, they are the sustainable and environmentally friendly <b>solution for hydration</b>.</p>	

**aquaBUBBLER** 1300 213 774  
Drinking Fountains [www.aquabubbler.com.au](http://www.aquabubbler.com.au)

### Ask us about our new LED Lights!

**BIGASS**  
FANS  
No Equal

Unit 56/5 Gladstone Road, Castle Hill, NSW 2154  
P. 02 9680 1733 | M. 0477 124 117 | W. [www.airaway.com.au](http://www.airaway.com.au)

**airaway**  
cost saving. effective airflow



## A3/B3 Living in the Light:

### Generative Leadership and Another Way of Looking at Social Justice in the School Community

**Ms Julie Morgan**, Senior Consultant & Lecturer – Organisational Development, ACU Executive Education | Australian Catholic University.



Julie Morgan is a member of the ACU Executive Education team and teaches within the Faculty of Theology and Philosophy's postgraduate leadership programs. Julie's executive leadership experience includes working as the Regional Director of the Asia Pacific for Franciscans International, and as the Deputy National Director of Caritas Australia. She has worked extensively throughout South East Asia in the delivery of development and advocacy programming and in leadership enhancement, human rights education and peacebuilding training.

Julie has served on several boards and management committees and provides Executive Coaching in the Not for Profit sector. Prior to working in international development and human rights, Julie was a Catholic school teacher in several Victorian Secondary schools. She worked as a Religious Education Coordinator and Director of Faith Development and Religious Education for 8 years. Julie holds degrees in Theology, Moral Philosophy, and has a Masters in Professional Ethics. Julie has qualifications in International Human Rights Law, Counselling, Association Management, and Teaching.

She is currently undertaking Doctoral studies at the University of New England in the area of leadership. Julie is also a Director on the Board of Santa Maria College, Northcote

**Abstract:** Taking clues from the Scripture and from contemporary leadership theory, this session invites participants into a dynamic, interactive yet deeply intellectual engagement with the indispensable role that justice plays in the systems and culture of the Catholic school. We will explore the way that generative leadership interrupts patterns of exclusion, includes each person

in the school community in a common purpose and invites and enables the deep transformation of staff as well as students. This session is focussed on strengthening the leadership capabilities of the participants in a way that puts the emphasis on the leader's capacity for building organisational culture that has justice, compassion, vulnerability and courage at its heart. Participants will engage with each other in purposeful dialogue about the complex cultural questions that keep them awake at night but will do so with hope and humour, and will leave with a few techniques that they can put into practice when they return to work.

*... building organisational culture that has justice, compassion, vulnerability and courage at its heart ...*

Designed to provide direction for professional learning, Touchstones embeds a proven process of evaluation and goal setting into a unique and user-friendly online environment.

To learn more, visit  
[www.mytouchstones.com](http://www.mytouchstones.com)



TOUCHSTONES

Brought to you by



[www.circle.education](http://www.circle.education)

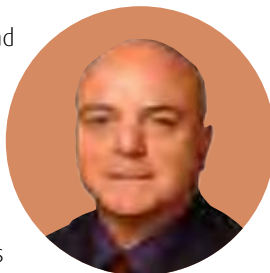


## A4/B4 Open Your Heart: Strategic Leadership – Spirituality, Mysticism and Art

**Rev Peter Steane MSC**, Professor of Strategic Management and Head of School of Business Sydney, Australian Catholic University.

Peter Steane is Professor of Strategic Management and Head of School of Business Sydney, Australian Catholic University. He has held senior roles in other universities (MQ, RMIT, QUT, and LaTrobe); he continues as Emeritus Professor at Macquarie University and as Visiting Professor at Assumption University (Thailand) and Divine Word University (PNG). Dr Steane consults to a range of organisations in the Asia Pacific (Pfizer, Merrill Lynch, Unisys, Woolworths, Mercy Health, etc.) about: Strategic Thinking Skills, Leadership Formation, Ethical Governance Decisions, and Spiritual Leadership in Teams. Peter teaches in MBA and Executive programs, and has delivered programs to build Research Leadership Capacity in Asian universities, through USAid, ADB and AusAID funded grants. He possesses over 100 referred publications; his most recent book is Spiritual Formation: A History of Mysticism and the forthcoming is Picasso's Code: The Art of Strategy. Dr Steane is an MSC priest. He is passionate about justice outcomes via social entrepreneurship, through his work in indigenous company director training, mentoring young leaders, and his active directorships on boards. He started his academic career lecturing in educational leadership, with a PhD comparing strategy and leadership between CEOs and government education departments.

**Abstract:** Leadership theory and practice over the last century includes tips about vision, style, charisma and more. One of the often-used characterisations of leadership is the need to be 'strategic'. What constitutes the 'strategy' in strategic leadership? What makes Catholic leadership strategic? Spirituality informs us, as does modern art. What if leadership is more than just this? This session fuses the frameworks: spirituality, art and leadership, which – on the surface – appear unrelated. It explores mystics and artists, to see how they link opposites, discern patterns, and accept paradoxes. These are high level strategic skills required of leaders. Spirituality is revealed in many ways: through mystics, in art, from nature. It is not only the cerebral and analytical that creates good leaders. There are lessons about leadership in the 21st century - for schools and companies and



parishes – where the skills of good strategic leadership are in building mindsets, beliefs, people and systems. Like spirituality, art – especially modern art - can be provocative, open minds and hearts, force juxtapositions. Many artists phrase their act as spiritual and for many viewers, it is spiritual. Mystics founded congregations with distinctive charisms that have adapted and re-founded and sustained themselves over generations. Artists provoke and inspire insights hitherto not considered. Spirituality informs strategy and leadership, and enables Catholic education to differentiate itself from alternatives.

*... the skills of good strategic leadership  
are in building mindsets, beliefs, people and systems ...*

**EDU** *Quip*®

PH: 1800 804 230  
FAX: 1800 676 083  
sales@eduquip.com.au  
www.eduquip.com.au

**CRESTED PROMOTIONAL PRODUCTS FOR ALL OCCASIONS**



Member of  
**appa**  
AUSTRALASIAN PROMOTIONAL  
PRODUCTS ASSOCIATION



## A5/B1 Sing a New Song, and You'll have the Key

**Dr Amy-Jill Levine**, University Professor of New Testament and Jewish Studies, E. Rhodes and Leona B. Carpenter Professor of New Testament Studies, Professor of Jewish Studies Divinity School and College of Arts and Science Vanderbilt University.



**Abstract:** The psalms speak of singing new songs (Psalm 40.3; 96.1; 98.1; 144.9; 149.1), and every time we sing them, we follow that direction. Every song we sing is new: our voices, the pitch, the timing, the accompaniment, the audience, the mood, invariably change. And every song echoes other songs, in words, in music, in mood. The number of notes is limited; the number of songs, infinite. Mary's Magnificat (Luke .46-55) is not called a "song" and Luke does not say that Mary "sang" it, but a song it is, whether hymn or chant or psalm. It is both a new song, and a very old one. Mary evokes the songs of Miriam and Deborah, Hannah and David. More, she gives voice to those who might find themselves voiceless: the slave, the oppressed, the hungry, the forsaken. We do not have to invent new tunes, new lyrics, or new rhythms to pray, to rejoice, or to lament. We can borrow, or adapt. Our task is to make each song new as we sing for celebration and for struggle, for inspiration and for challenge.

*He put a new song in my mouth,  
a hymn of praise to our God. Many will see and fear and put their  
trust in the LORD. – Psalm 40.3*



**INTER  
SQUARE**  
by **Intercraft.**  
FLOORING GROUP

**"TRANSFORM YOUR GYM OR HALL  
INTO A FULLY CARPETED MULTIPURPOSE  
SPACE IN JUST MINUTES"**





01 INSTALLATION



02 AFTER

[WWW.INTERCRAFTFG.COM.AU](http://WWW.INTERCRAFTFG.COM.AU)
[E SALES@INTERCRAFTFG.COM.AU](mailto:SALES@INTERCRAFTFG.COM.AU)
[P 1800 673 023](tel:1800673023)

### EDUCATIONAL & SERVICE LEARNING TOURS

**"It is the supreme art of the  
teacher to awaken joy in creative  
expression and knowledge"**

Albert Einstein

The best student travel experience  
starts by having the best travel partner.  
We're committed to helping teachers  
and their students bring subjects to  
life, by creating curriculum linked tours  
with experiential learning activities.

Curriculum linked, custom  
designed tours for the State,  
Australian and IB curricula

**Call +61 3 9646 4200**  
**[www.latitudegrouptravel.com.au](http://www.latitudegrouptravel.com.au)**

D3.0 63-85 Turner Street Port Melbourne Victoria Australia 3207

 **LATITUDE**  
GROUP TRAVEL

ACN 145 383 811



## A6 Opening the Heart Beyond its Aching Moral Loneliness in Our Lives: The Deeper Reality Beneath Our Longing for a Soulmate

**Dr Ronald Rolheiser OMI**, Director Oblate School of Theology, San Antonio Texas.

**Abstract:** Our deepest loneliness is not emotional, but moral. More than we long for someone to sleep with sexually, we long for someone to sleep with morally. In our depth we often feel that we are unanimity-minus-one; hence our poignant longing for a soulmate. What is moral loneliness? From where does it derive? What's its role in our spiritual journey? How does it play out in our lives? What is its invitation to a deeper grace and what are its specific dangers?



## B5 The New Song of Pope Francis

**Most Rev Mark Edwards OMI**, Auxiliary Bishop Archdiocese of Melbourne.

**Abstract:** Pope Francis emphasised his teaching that the Church must be with and accompany the marginalised and those on the peripheries of society by having lunch in a soup kitchen with 60 of the poorest people in Florence. He was given a meal voucher when he arrived and ate off a plastic plate, just like the rest of those gathered with him. This message is heard. He is new, fresh and exciting. And he is teaching us to be new and fresh. Pope Francis is not teaching us new 'liberal' theology; his teachings lean heavily on those of Benedict XVI and St John Paul II. A part of what makes his message powerful comes from the prophetic actions that illustrate his message. More importantly, it comes from the lightness of joy in the heart and an attitude of freedom. This is a song that we need to sing. Fr Rolheiser OMI would ask: "What was the old song?" This concurrent talk will explore what is new and what is old about the song that Pope Francis is teaching us and how we can sing that in our schools.



**SCHOOL TOURS MADE EASY**  
TOURS WITHIN AUSTRALIA & OVERSEAS



"The best education I have ever received was through travel." - Lisa Ling

We look forward to the prospect of building individual business relationships with each and every one of you.

Enquire today for your **obligation free quote & detailed itinerary**

**Away We Go Tours**

1300 138 812

[awaywegotours.com.au](http://awaywegotours.com.au)

[admin@awaywegotours.com.au](mailto:admin@awaywegotours.com.au)

## Electronic Student Diary

Only \$2.50 with Every Print Diary Purchase



✓ **SMART PHONE APP**  
Works on PC, Mac, Android, Laptop

✓ **INTEGRATION**  
With School Admin/Management/  
Timetable Software

✓ **MULTIPLE DEVICES**  
Operates on Any Platform

✓ **PARENT LOGIN**  
Direct Teacher Communication,  
Daily Reporting

✓ **NON DELETABLE HOMEWORK**  
Parents Can View

For Further Details, Please Contact:  
[sales@getpositive.com.au](mailto:sales@getpositive.com.au)  
(07) 5309 6481

## School Visits

**1. Aquinas College, Ringwood Aquinas College** (established 1961) is a Catholic Regional College established to provide a secondary education for Catholic boys and girls residing the area around Ringwood in the outer Eastern suburbs of Melbourne. The College is a 7-12 College on 16 hectares with an enrolment of 1670 students. In its Teaching and Learning Policy, Aquinas emphasises visibility in its classrooms, its use of information, its collegiality and its learning. The College has constructed classrooms where the activities are able to be seen by the whole community without compromising the intimacy of a classroom environment. The College has a Chapel, a Performing Arts Centre, the Aquinas Resource Centre (the ARC), a Technology Centre which includes a Makerspace, Visual Arts spaces, Sports facilities, newly refurbished, visible Science laboratories, facilities for VET in Hospitality (a trade training centre and working Café), Sports and Recreation, Building and Construction, Plumbing and Music Industry. Of particular interest is the new Middle Years Building that takes visibility and collaborative spaces to new level. The College is a member of the Council of International Schools and focuses on outward looking students in languages, cultural exchanges and social justice.



**2. Ave Maria College, Aberfeldie.** Ave Maria College has undergone extensive refurbishment of its heritage building in recent years. In October 2015 the College will complete a renovation and significant extension of another building to encompass a research hub, science labs, general classrooms and a floor dedicated to a Visual Arts precinct, including outdoor terrace. This year all buildings will have their signage and symbolism enhanced with the naming of buildings dedicated to our Franciscan patrons. Delegates can expect to see a beautifully maintained College of learning for girls which maximises limited space in a close-to-city location. Welcome and hospitality guaranteed!



**3. Caroline Chisholm Catholic College, Braybrook.** Caroline Chisholm Catholic College is currently in a time of significant development and renewal. This is reflected in the launch of a junior secondary program, Aspire. We also have a new electrotechnology Trade Training Centre. There have been major significant works across the two sites in Melbourne. These include a new chapel and quadrangle. The College has also adopted an innovative approach in addressing the areas of property & maintenance, document archiving and policy and procedure management. A multicultural diverse College in a low SES area, Caroline Chisholm Catholic College is a Restorative Practices school with a strong commitment to Family School Partnerships. Establishing a Family Centre, a Differentiated Learning Centre and increased student services have been part of a change process that have recently commenced.



**4. Catholic Regional College, Sydenham.** Catholic Regional College Sydenham is the largest senior secondary Catholic school in Australia. With the most diverse range of subject offerings, the College not only offers most VCE subjects but also offers 38 VET courses on site as well as the VCAL with a dedicated applied learning centre. Innovation and excellence are visible across more than 30 specialist, purpose design and built facilities. Boasting a shopping centre on a school site, open to the public, the College operates businesses staffed by students who are undertaking a VET course while completing the workplace learning component on site at school engaging with the public. The Trades Training Centre provides the training while the retail outlets provide the employability skills that sets this model of education apart. Quatrefoils restaurant, a Bakery, Beauty Salon, Picture Framing store, Signage business, The Crate Theatre, Design 380, CRCFit and CRCLearn incorporating the Catholic Regional College Institute of Training. With plans for a farm to



## School Visits

include bees( honey), chickens (eggs), alpacas (wool) and an Orchid hothouse this is 21st Century innovation in learning. The new Learning Common has taken the traditional school library and completely rethought the facility for learning today. The Performing Arts building was recognised by Learning Environment Australasia . The student services building, study hall, the cafeteria, gardens and grounds, VET Lab Skills laboratory, even the sculptural art throughout the grounds add to an environment that invites students to learn. The Year 11 and 12 campus of Catholic Regional College at Sydenham had an enrolment of 808 in 2015 with 960 now enrolled for 2016 and continuing growth anticipated for the future. In addition, the College has 700 students per week from the surrounding State, Independent and Catholic schools studying a course one day per week on site at this College. Opening at 4am each weekday and closing around 11pm, this is unlike any school you have or are likely to see. Welcome to Catholic Regional College Sydenham – Every Student, Every Pathway.

**5. Loyola College, Watsonia.** Loyola is a Jesuit Partner school built on the grounds of the former Australian Jesuit Novitiate and Retreat House (1934-1974). The College was founded in 1980 and is a Year 7-12 Co-educational College established in the Ignatian tradition located on 26 acres of land in Watsonia north east of Melbourne. The current enrolment is 1360 students. The College has a vertical Pastoral House based system, two chapels, renovated and extended Sports and Assembly Hall, new iCentre ( formerly the Library), specialist areas for Technology , Visual Arts, Science, Languages, Sports fields, Student Training Restaurant , commercial kitchen and a new state of the Art Performing Arts Centre. The College also has established some on site short term accommodation. The College has a strong international focus with 3 sister schools, a number of immersion programs for students and student exchange homestay programs.



**6. Marian College, Sunshine West.** Marian College has undertaken significant works over the past nine years and several new facilities have been developed to support the Learning and Teaching Program. Most recent of these is the Design Warehouse, a modern, spacious and open facility to support learning and teaching in Design and Technology. The new Food Technology Rooms and Canteen also connect with the College's Trade Training Centre (Hospitality and Hairdressing) to rationalise the food service and preparation areas around the College and maximize the use of resources. Together with a 1:1 laptop program and BYOD program the staff at Marian College are working to deliver creative, innovative and challenging learning programs for students in years.



**7. Star of the Sea College, Brighton.** Contemporary teaching and learning in this Century presents educationalists with exciting changes and unique challenges. The international focus on the development of learning spaces, as a tool for teachers and students, has led to many innovations. Star of the Sea has long had a name for its innovative, inclusive and equitable approach to education and in 2013 we embarked on a long term project called "The Wave". "The Wave" started with the renovation of the Year 7 and 8 learning spaces; linking spaces with pedagogical developments was a priority. The spaces offer variety, transparency, freedom and choice with multiple teaching and learning areas. In these new spaces teachers and students collaborate on learning and work in partnership to achieve the best outcomes. Technology is utilised through interactive data projectors, Apple TV and synchronised learning spaces. Opportunities for both hi-tech, low-tech and no-tech activities are available in these spaces. With these spaces Star continues to engage students in their learning journey and prepare them for a future that is ever evolving.





## School Visits

**8. Sacre Coeur, Glen Iris.** This visit will highlight:

- A Prep Yr 12 girls school setting on one campus (approx. 740 students)
- A school that has blended both heritage buildings dating back to 1888 and more modern buildings featuring 21st learning needs
- A new cafeteria and two learning spaces were created in 2010
- A new science building was created in 2012 featuring two state of the art science laboratories, a prep room and two break out spaces which enable the girls to discover the answers to practical questions before returning to the lab to apply their knowledge.



**9. St Kevin's College, Toorak.** St Kevin's College has recently built a Music Centre, the Victor McMahon Music Centre, which caters for musicians from Primary and Secondary. Science laboratories (8) have been built, six new and two refurbished. A lecture theatre was included in the refurbishment. The Wilding Centre – pool, courts, gymnasium, etc - although no longer new, has been a great success, and is well worth a look when on the Heyington campus. The proximity to Heyington (Railway) Station makes a visit to St Kevin's College an easy ride of ten minutes on the Glen Waverley line from Flinders Street Station.



**10. Xavier College, Kew.** Xavier College was founded by the Society of Jesus in 1878 and has a student population of 2070 occupying three campuses. The Senior Campus is located in Kew and caters for boys from Years 9-12, including boarders from country Victoria and near New South Wales. The College has outstanding facilities on all three sites. The magnificent historical buildings are complemented by the more modern facilities that reflect the style of the periods in which they were built. All are superbly maintained, the grounds reflecting the same care and attention to detail. The facilities provided a rich environment and enhance the student experience. The more recent buildings at the Senior Campus include the Stephenson Centre Sports Complex, the Eldon Hogan Performing Arts Centre and a Science Laboratory block. The College has a vertical House and Tutor Group pastoral system and a very strong Faith and Service Programme. As part of an international network of Jesuit Schools, and as a member of the Council of International Schools (CIS), Xavier has a wide variety of Immersion and exchange programs with an emphasis on Inter-cultural and International mindedness.



## Welcome Reception

### Eureka Towers

**Proudly Sponsored by Batger**

**Venue:** Eureka Towers

**Date:** Sunday 3 July 2016

**Time:** 6.00pm – 8.00pm

**Cost:** Included in Full Delegate Registration Fee

**Extra Tickets:** \$80.00

**Provided:** Canapés and drinks

Eureka Towers offers an awe inspiring view of Melbourne from the Southern Hemisphere's highest platform The Edge. Some delegates may wish to share in the excitement of a trip to the Edge platform. This can be arranged when you arrive, at the cost of \$12 per ride and \$10 per photo.

### Conference Dinner

**Venue:** Members' Dining Room, Melbourne Cricket Ground

**Date:** Tuesday 5 July 2016

**Time:** 7.15pm – 11.00pm

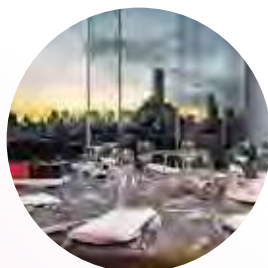
**Dress:** Lounge suit or evening wear

**Cost:** Included in Full Delegate Registration Fee

**Extra Tickets:** \$135.00

**Provided:** 3-course meal plus entertainment

The Conference Dinner is an opportunity for you to enjoy a relaxing evening of good food, wine and entertainment while catching up with colleagues.



MountView High School, NSW



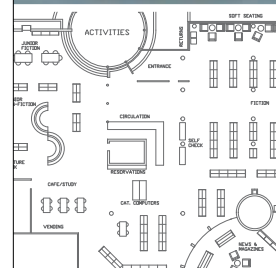
Clayfield College, QLD



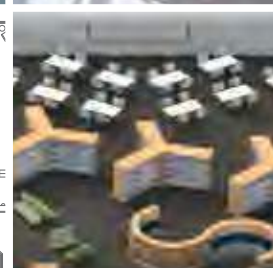
Loreto Mandeville Hall, VIC



Firbank Grammar, VIC



The Forest High School, NSW



St Hilda's School, QLD



St Leo's Catholic College, NSW



Patrician Brothers College, NSW



CREATE A  
21<sup>ST</sup> CENTURY  
LEARNING  
SPACE WITH  
RAECO®



B  
R  
O  
N  
Z  
E  
  
S  
C  
U  
L  
P  
T  
U  
R  
E  
S

## SAGE SISTERS

**Specialising in Religious Sculptures,  
Icons and Artworks Australia wide.**

The projects are managed from design to installation by Chris, Regina and Megan who have over 80 years experience within the school sector. We work with you to design artworks to suit your charisma, new building projects or milestones of your community.

Contact Information

Web: [www.hullabaloostudio.com.au](http://www.hullabaloostudio.com.au)

Email: [sss@hullabaloostudio.com.au](mailto:sss@hullabaloostudio.com.au)

Ph: Regina 0419 832 007 Chris 0432 687 031



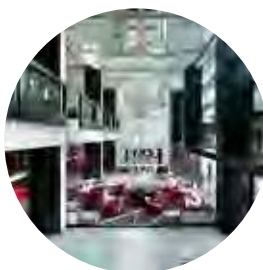


## Venue: Crown Conference Centre Melbourne

8 Whiteman Street, Southbank Vic 3006

(Queensbridge St end of the Crown complex)

The Crown Conference Centre is purpose-built facility within the Crown Promenade Hotel. Delegates can access the Crown Conference Centre through the main entrance of Crown Promenade Hotel or via the ground level entrance on Whiteman Street.



## Car parking

Crown has two public car parks with over 5,000 spaces.

For full details on public car parking rates and options, please see Parking at Crown.

<http://www.crownmelbourne.com.au/parking>



## Internet

Complimentary Wi-Fi (suitable for basic internet browsing and checking emails only) is available in all Crown Melbourne function room foyer areas.



## Dress code

Dress for the Conference is smart casual except Mass and the Conference Dinner, for which the dress is more formal.

## Dietary requirements

All dietary requirements can be catered for if ordered in advance. Please include any special requests you may have on your registration form. You may need to make yourself known to catering staff during the Conference if you have special dietary needs. Please look for the table with "Special Diets" in the catering area.



[edumgmt.com.au](http://edumgmt.com.au)

A revolution in education management

**EMS 360 provides a fully customisable online software package for school management - including:**

- ✓ Staff Accreditation
- ✓ AITSL Reviews
- ✓ Catholic Teacher Registration
- ✓ 360 Degree Reviews
- ✓ Leave and Absence
- ✓ Professional Development
- ✓ Activities, Camps and Excursions
- ✓ Management Diary

EMS 360 continues to evolve thanks to feedback from our many users. We will work closely with you to make sure that your needs are met!

GET IN TOUCH

☎ 03 5272 2199

@ [info@edumgmt.com.au](mailto:info@edumgmt.com.au)



**Our free recruitment service for existing, emerging and aspiring school teachers and leaders brings you unmatched benefit**

Connecting your job to quality, **best fit candidates** across a network of 130,000 candidates and counting.

A range of **permanent and contract recruitment services that can be customised** to varying school needs and contexts.

10 years' service, **dedicated to the high expectation** of Independent, Catholic and Christian schools delivering superior, long-term results.

A proven process, an **extensive intrastate, interstate and international network** together with the **highest ethical and professional standards** applied to each assignment.

Unparalleled **vetting, child protection and person specification** recruitment techniques and activities to minimise risk and maximise the **benefit of an appointment.**

[www.smartteachers.com.au](http://www.smartteachers.com.au)  
1800 734 758



### Airport transfers

Skybus - +61 3 9335 2811 <http://www.skybus.com.au/>  
 Starbus - (03) 8378 8700 <http://www.starbus.net.au/>  
 Taxi fare - Tullamarine Airport to Crown Conference Centre.  
 Approximately \$70.00

### Melbourne transport – myki cards

Melbourne's public transport system now runs on Myki Cards. If you are planning to stay in Melbourne and use the public transport system, you can purchase your Myki Card before arriving in Melbourne, and have it topped up and ready to go. When you buy a Myki it has no value on it, so you need to top up before you travel. Please go to [www.myki.com.au](http://www.myki.com.au) for further information.

### Weather

Melbourne has a reputation for its changeable weather. A tip for any visitor is to be prepared for anything; take an umbrella and wear layers that can be worn or removed as needed. Winter weather ranges from 2 degrees overnight to 16 degrees on average during the day.

### Cancellation

Registration cancellations will not be accepted unless made in writing. Cancellations made before Friday 10 June 2016 will be refunded less 25% of the Conference Registration fee, to cover administration costs. No registration refunds will be given after this date.

### Registration & accomodation changes policy

Registration and accommodation changes will not be accepted unless made in writing. Changes made within 14 days of the event may incur costs due to specific hotel and venue policies.



**Furniture built as  
strong as their  
imagination**

 **BATGER**  
[www.rebatger.com.au](http://www.rebatger.com.au)

 **Group 8 Education**

We work with leaders in schools to support the emergence of energising, collaborative cultures for the 21<sup>st</sup> century. Collaborative cultures develop everyone in the school (executive, middle leadership, teachers, non-teaching staff, students and the whole school community).

Collaborative cultures create lifelong learners in students and staff with the courage to be confident, collaborative and creative - able to face up to the challenges of the digital age.

The key ways we do this are through:

- Building an aware, highly functioning and role modelling executive... thus leading to...
- Evolving robust, energised and effective middle leadership practices... thus empowering...
- Improved teacher performance, morale and willingness to change... thus enabling...
- The development of healthy young people with the courage to be confident, collaborative, creative and well prepared for life-long learning

Our approach is broadly bundled into categories in the 'Collaboration Tool Selector' as Coaching, Conversations, Workshops and Meetings:

- Coaching tools include staff feedback to leaders, student feedback to teaching staff, classroom and meeting observation ["observer as learner"], cognitive coaching in one-on-one, group and team formats and tools to help staff develop a broader range of collective activities
- Conversation tools are used to build trust and understanding
- Workshops tools are used in planning, design and to get work done
- Meetings tools are used to take decisions and maintain momentum

For more information about our programs and tools: visit us at our stand at CaSPA 2016; speak to us at social events; email us at [info@gr8education.com](mailto:info@gr8education.com); visit our website [www.gr8education.com](http://www.gr8education.com) or call us on 0418 432 316.

## Program disclaimer

The speakers, topics, and times are correct at the time of publishing; however, in the event of unforeseen circumstances, the organisers reserve the right to alter or delete items from the conference program.

## Privacy Policy

In registering for this conference, relevant details will be incorporated into a delegate list for the benefit of all delegates and may be made available to Conference Sponsors (subject to strict conditions). By completing this registration form, you acknowledge that the details supplied by you may be used by these organisations. Should you not wish your details to be used for these purposes, please tick the box on the registration page. The Conference Manager will happily answer any queries you may have about the conference or your registration.

**Ros Christie** [ros@bccm.com.au](mailto:ros@bccm.com.au) or

**Jude Prentice** [info@bccm.com.au](mailto:info@bccm.com.au)

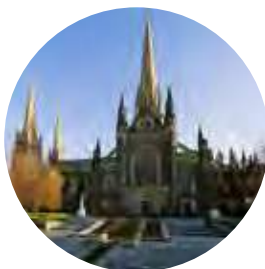
## BCC Management P/L

Level 1, 370 Bay Street, Port Melbourne, Vic 3207

P 03 8679 5460

F 03 8679 5469

**E** [events@bccm.com.au](mailto:events@bccm.com.au)



MultiLit delivers effective, evidence based literacy programs widely used throughout Australia. These are supported with:

- ▶ Accredited professional development workshops
- ▶ Assessment tools – quick and simple measures of reading performance
- ▶ An effective classroom behaviour management system

### For more information

**T:** 1300 55 99 19

**W:** [www.multilit.com](http://www.multilit.com)

MultiLit is a research initiative of Macquarie University



### iQ 20 Cart™



**Sync, charge, store, secure, transport and monitor 20 iPads and Tablets.** Features 2.4 amps USB charging and includes four Small Baskets by PC Locs for easy device portability.

### Carrier 20 Cart™



**Charge, store, secure and transport 20 Tablets and Chromebooks.** Features ECO Safe Charge for safe and efficient charging and includes four Large Baskets by PC Locs for easy device portability.

### Carrier 10 Charging Station™ for wall and desk mounting



**Charge, store and secure 10 Laptops, Chromebooks, and Tablets.** Includes Two Large Baskets by PC Locs for easy device portability.

### iQ 10 Sync Charge Station™ iQ 10 Charging Station™



**Sync, charge, store and secure 10 iPads and Tablets.** Features 2.4 amps USB charging and includes Two Small Baskets by PC Locs for easy device portability.

[www.pclocs.com.au](http://www.pclocs.com.au) | 1300 725 627 | [sales@pclocs.com.au](mailto:sales@pclocs.com.au)

Specifications and images are for illustration purposes only. Final product and its inclusions may differ. May not fit all devices and cases. Please check compatibility. Contact us for more details.



# SEQTA™

Better Education. Better World

With over 150 primary and secondary Catholic schools using SEQTA across Australia, it's easy to see why it is the LMS of choice for Catholic educators.

SEQTA is an all-in-one teaching and learning ecosystem that assists teachers, students, and parents to work together in one highly collaborative teaching and learning environment.

Attendance, pastoral care, curriculum planning, marks book, online delivery of courses and much more is available right at your fingertips.

This means teachers spend less time on paper-work, and more time doing what they're really wanting to do: teach.

To see how **SEQTA** can make a difference in your school, visit [www.seqta.com.au/demo](http://www.seqta.com.au/demo) for a custom demonstration.



The Outdoor Education Group provides bespoke journey and centre based outdoor programs in Victoria, New South Wales, the ACT and South Australia.

Contact us to discuss how we can help you deliver on your outdoor program aims.



[www.oeg.org.au](http://www.oeg.org.au)

Tel: 03 5774 2617

## Teaching kids to use the Internet responsibly

Improving Online Behaviour | CyberSafety | Digital Citizenship



[bluereef.com.au](http://bluereef.com.au)



## Registration Form

### 2016 Catholic Secondary Principals Australia (CaSPA) Conference

Sunday 3 – Tuesday 5 July 2016 Crown Promenade Hotel, Conference Centre, Melbourne

### Tax Invoice

ABN: 32 839 532 828

Title ..... Given Name ..... Surname .....

Preferred name for badge .....

Position ..... School/Organisation .....

Postal Address.....

Suburb..... State ..... Postcode .....

Ph ..... Mob .....

Emergency Contact No..... Email .....

Special dietary or other requirements .....

Partner's name (if attending) .....

Partner's special dietary or other requirements .....

If this is the first time you have attended a CaSPA Conference please tick this box ☐

If you do not want your contact details provided to other delegates and sponsors please tick this box ☐



# Over 9,000 chapters at your fingertips

Supported by leading Australian publishers including Pearson, Cambridge, Oxford, Cengage Learning, Macmillan Education and Insight Publications.

**learningfield**  
TEACH | INSPIRE | GROW **.com.au**

For more information, visit [www.learningfield.com.au](http://www.learningfield.com.au)

Brought to you by **COPYRIGHTAGENCY®**

LearningField & Copyright Agency are trademarks of Copyright Agency Limited ABN 53 001 228 799



- journey based programs
- activity based programs
- outdoor adventure activities
- traineeships • training courses
- group camps • onsite facilities
- accommodation • offsite facilities

PO Box 328, Gembrook, Victoria, Australia 3783 Phone: 03 5968 1739

visit [hallsoutdoored.com.au](http://hallsoutdoored.com.au) for further information



## A. Registration (All prices are inclusive of GST unless otherwise specified)

(Full registration includes morning and afternoon teas, lunches, Welcome Reception and Conference Dinner)

**Early Bird Registration** up to **6 May 2016** \$850.00 \$ .....  
(payment must be received by this date)

**Full Registration** (after 6 May 2016) \$925.00 \$ .....

### Day Registrations

½ Day Registration (Welcome Reception Included) \$200.00 \$ .....  
Sunday 3 July 2016

Day Registration – Monday 4 July 2015 \$395.00 \$ .....

Day Registration (Conference Dinner **not** included) \$395.00 \$ .....  
Tuesday 5 July 2016

Please note the cost of the functions below are included in the Early Bird and Full Registration Fees above. To assist with catering requirements please indicate if you will be attending the following function:

**Welcome Reception** – Eureka Towers - Sunday 3 July 2016 ....YES / NO

**Conference Dinner** – MCG Members Dining Room - Tuesday 5 July 2016 ....YES / NO

## Partners' Registration

Partner's Registration \$295 \$ .....

(includes keynote sessions and day catering only) (If you wish to attend the Welcome Reception or the Conference Dinner these are an additional cost and you can select these under Extra Tickets for Partner or Guest)

### Additional Tickets for Partner or Guest

**Welcome Reception – Eureka Towers** \$ 80.00 \$ .....

Sunday 3 July 2016

**Conference Dinner – MCG Members Dining Room** \$ 135.00 \$ .....

Tuesday 5 July 2016

**Sub Total "A" Registration** \$ .....

## B. Accommodation

**Conference Accommodation:** If you complete this section your accommodation will be booked for you. A confirmation letter will be sent to you upon receipt and payment of your registration.

**Extended Stay:** If you are considering extending your stay before or after the conference dates most hotels will honour the accommodation conference rates listed below (subject to availability), however these rates are not guaranteed. Please add these days to your arrival and departure dates and the Conference Managers will follow up for you.

Arrival date ..... Arrival Time..... Departure Date .....

(Please note check-in time is 2.00pm and check out time is 11.00am. Variations to this are upon request and no guarantee of extension can be given).

Frequent Flyer Program and Number .....

**Crown Promenade Hotel**, 8 Whiteman Street, Southbank

- ☐ \$295.00 Standard Room per night
- ☐ \$322.50 Standard Room per room including breakfast for one (1) person
- ☐ \$350.00 Standard Room per night including breakfast for two (2) people

**Crowne Plaza**, 1-5 Spencer Street, Docklands

- ☐ \$270.00 standard double room per night including breakfast for one (1) person
- ☐ \$20.00 Additional full buffet breakfast

**Travelodge Southbank**, 9 Riverside Quay, Southbank

- ☐ \$149.00 Guest room per night for up to 2 people  
(Note: this rate is only available for 3 – 5 July inclusive. If you wish to add additional nights please contact the Conference Manager)
- ☐ \$15.00 Full buffet breakfast

Please specify your bedding requirements below:

☐ Single    ☐ Double    ☐ Twin Share    No of nights ..... x \$ .....

Breakfasts    No of nights ..... x \$ .....

**Sub Total "B" Accommodation**    \$ .....

I wish to share with .....

Please note that it is the delegate's personal responsibility to arrange with a colleague with whom they are to share. Each delegate must complete an individual registration form, even if they are sharing.

**Sub Total Registration "A"**    \$ .....

**Sub Total Accommodation "B"**    \$ .....

**Total Amount Owning (Incl. GST)**    \$ .....

**Concurrent Session Selections**

Please register here for these sessions by numbering the available sessions in order of preference 1-3 (starting with number 1 as your preferred choice). We will do our best to accommodate your choice of session; however registrations will be allocated strictly in order of the date the registration is received.

**Concurrent Session A – Monday 4 July, 11.45am – 12.45pm**

- ☐ A1 Creativity and the Divine,  
Sr Sheila Flynn OP, Director Kopanang Trust, Tsakane South Africa
- ☐ A2 To Love as Jesus has Loved: Reading John 13:1-38,  
Rev Professor Francis Moloney sdb AM
- ☐ A3 Living in the Light: Generative Leadership and Another Way of Looking at Social  
Justice in the School Community,  
Ms Julie Morgan
- ☐ A4 Open Your Heart: Strategic Leadership – Spirituality, Mysticism and Art,  
Rev Peter Steane MSC
- ☐ A5 Sing a New Song, and You'll have the Key,  
Dr Amy-Jill Levine
- ☐ A6 Opening the Heart Beyond its Aching- Moral Loneliness in Our Lives: The Deeper  
Reality Beneath Our Longing for a Soulmate,  
Ronald Rolheiser

**Concurrent Session B – Tuesday 5 July, 1.15pm – 2.15pm**

- ☐ B1 Sing a New Song, and You'll have the Key,  
Dr Amy-Jill Levine
- ☐ B2 To Love as Jesus has Loved: Reading John 13:1-38,  
Rev Professor Francis Moloney sdb AM
- ☐ B3 Living in the Light: Generative Leadership and Another Way of Looking at Social  
Justice in the School Community,  
Ms Julie Morgan



- ☐ B4 Open Your Heart: Strategic Leadership - Spirituality, Mysticism and Art,  
Rev Peter Steane MSC
- ☐ B5 The New Song of Pope Francis,  
Most Rev Mark Edwards OMI
- ☐ B6 Creativity and the Divine,  
Sr Sheila Flynn OP, Director Kopanang Centre South Africa

### Optional Session - Monday 4 July, 7.30pm – 8.15pm

- ☐ A Walk Through the Kopanang Canticle of the Universe,  
Sr Sheila Flynn OP

### School Visits

Please register here for these School Visits by numbering the available visits in order of preference 1-3 (starting with number 1 as your preferred choice). We will do our best to accommodate your choice of school; however registrations will be allocated strictly in order of the date the registration is received.

- ☐ Aquinas College, Ringwood
- ☐ Ave Maria College, Aberfeldie
- ☐ Caroline Chisholm Catholic College, Braybrook
- ☐ Catholic Regional College, Sydenham
- ☐ Loyola College, Watsonia
- ☐ Marian College, Sunshine West
- ☐ Star of the Sea College, Brighton
- ☐ Sacre Coeur, Glen Iris
- ☐ St Kevin's College, Toorak
- ☐ Xavier College, Kew

## edunet technology for education

Edunet Computer Services aims to provide Victorian Education with quality IT hardware and excellent personalised service.

We specialise in:

- BYOD Programs
- Laptops
- Chromebooks
- iPads/Macbooks
- Sync/Charge Trolleys
- AV Installations
- Servers
- IT Accessories

We look forward to meeting you during the conference!  
sales@edunet.com.au | www.edunet.com.au | 1300 338 638

Your employees deserve to  
be rewarded with tailored  
Salary Packaging benefits and  
remarkable customer service.

#### BENEFITS INCLUDE



NOVATED  
LEASES



ENTERTAINMENT  
EXPENSES



LIVING  
EXPENSES



EXCLUSIVE  
MORTGAGE RATES



**Paywise Salary Packaging**

The easy way to better pay

1800 729 947 • info@paywise.com.au • www.paywise.com.au



## Payment Details

### Direct Credit Banking Details:

BSB: 013395

Account Number: 458137156

Account name: BCCM CaSPA Conf

### Online Registration (for Credit Card Payments Option)

<https://www.secureregistrations.com/2016CaSPA/>

A 3% credit card fee will be charged on all online registrations.

**Registration closing date is Friday 10 June 2016**

### Confirmation of your registration

Once your registration is processed you will receive a confirmation letter and Tax Invoice by email. Please check the registration details are correct and refer any queries to the Conference Manager.

## Conference Manager

### Ros Christie or Jude Prentice

BCC Management P/L

Level 1, 370 Bay St

Port Melbourne Vic 3207

Ph: +61 3 8679 5460

Fax: +61 3 8679 5469

Email: [info@bccm.com.au](mailto:info@bccm.com.au) or [ros@bccm.com.au](mailto:ros@bccm.com.au)

**CaSPA Website:** [www.caspa.edu.au](http://www.caspa.edu.au)



# CaSPA Conference

CROWN CONFERENCE CENTRE MELBOURNE VICTORIA 3 – 5 JULY 2016

