

MYOB EXO Business

Release Notes

2015.1.3

Contents

Introduction	1
What's New in this Release?	1
Installation	2
Pre-Install Requirements.....	2
Database Server.....	2
Client Workstation.....	3
Other Requirements.....	3
Installing MYOB EXO Business.....	4
Post-Installation	11
Logging in to EXO Business.....	11
Installing EXO Business Services.....	12
Setting up the Services	15
New Features	17
Updates to EXO Job Costing.....	17
Editing Job Invoices.....	17
Un-Write Off	18
Changes to EXO CRM.....	19
Changes to EXO OnTheGo	20
Resolved Issues	21
EXO Business Core.....	21
EXO Job Costing.....	22
EXO Intercompany	22
Known Issues	23

Introduction

What's New in this Release?

The focus of the 2015.1.3 release is on providing enhancements to the EXO Job Costing module and resolving issues identified in previous releases.

This release also contains the changes introduced in EXO Business 2015.1.1 and 2015.1.2; these include licensing changes and a fix to the EXO Intercompany module.

The purpose of this document is to provide essential information on the installation and use of this release:

- The **Installation** section provides an overview of the installation process, including pre-installation requirements and post installation steps.
- The **New Features** section describes all new features introduced in this release.
- The **Resolved Issues** section describes all issues that have been addressed by this release.
- The **Known Issues** section details any issues in this release that have been identified as requiring attention.
- The **New Profile Settings** appendix at the end of this document summarises all changes to EXO Business profile settings included in this release.

Installation

Pre-Install Requirements

Minimum system requirements for PCs running MYOB EXO Business components are detailed below. Full details of requirements and supported operating systems for MYOB EXO Business are available on the [Minimum System Requirements page on the MYOB website](#).

The performance of the EXO Business system is not assured if these requirements are not met. Similarly, performance cannot be assured if the EXO Business system is installed on a server that is already under load from other processes, or a RDBMS that is not suitable for the organization's volume of data (see "SQL Express" on page 3).

Database Server

Any server where an MYOB EXO Business database is installed should meet the following minimum requirements:

- Windows Server 2008, Windows Server 2012
- The latest Service Pack for the Windows operating system
- Intel Pentium® 4 2.4Ghz processor (or equivalent)
- 2 GB RAM
- 20 GB of hard disk space + 10 MB per user
- Microsoft Data Access Components (MDAC) 2.8 or later
- A supported version of Microsoft SQL Server:
 - Microsoft SQL Server 2008 R2/SQL 2008 R2 Express Edition
 - Microsoft SQL Server 2012/SQL 2012 Express Edition
 - Microsoft SQL Server 2014/SQL 2014 Express Edition
- The latest Service Pack for the version of SQL Server you are using

SQL Server

Microsoft SQL Server must be present on the EXO Business Database Server. If you want to use a specific edition of SQL Server, make sure it is installed before running the Installation Wizard. If SQL Server is not installed, the EXO Business Installation Wizard can install SQL Server 2008 R2 SP1 Express Edition (SQL Express) as part of the installation process (see page 7). Whichever version of SQL Server you use, it must be set up to use Mixed Mode authentication.

The blank and demo databases supplied with EXO Business have their compatibility levels set to “SQL Server 2008 (100)”. When upgrading from a previous version of EXO Business, database compatibility levels are updated automatically as follows:

- SQL Server 2008 and later databases are set to compatibility level 100.
- Older versions of SQL Server are not updated.

See the following web page for information on compatibility levels:

<http://msdn.microsoft.com/en-us/library/bb510680.aspx>

SQL Express

SQL Express may not be suitable for businesses with many users. SQL Express has limits on the amount of RAM and number of processors it can use, which affects the number of concurrent users that the EXO Business database can support. See the following MSDN article for more information:

<http://msdn.microsoft.com/en-us/library/cc645993.aspx>

Client Workstation

Any client workstation running the MYOB EXO Business application modules should meet the following minimum requirements:

- Windows 7 Enterprise, Windows 7 Professional, Windows 7 Ultimate, Windows 8
- The latest Service Pack for the Windows operating system
- Intel Pentium® 4 1.3 GHz processor (or equivalent)
- Hard disk space as required for the operating system
- 16-bit colour, 1024×768 screen resolution

Other Requirements

Certain features of MYOB EXO Business require one or more of the following:

- Internet access
- Microsoft Internet Explorer 7.0 or later
- Adobe® Acrobat Reader 7.0 or later

Microsoft Office connection requires Microsoft Word/Excel 2010 to 2013.

Contact synchronisation requires Microsoft Outlook 2010 to 2013.

MYOB EXO Business 2015.1.3 requires **ExonetLib.dll** version 8.8.0 or later. Version 8.8.0 is included with this release.

When installing manually on 64-bit operating systems, the file **RwEasyMAPI64.exe** must be copied from the **Supporting Files\RapWare** folder of the EXO Business DVD to the install directory. Register this file by running `RwEasyMAPI64.exe /regserver` from a command prompt.

Installing MYOB EXO Business

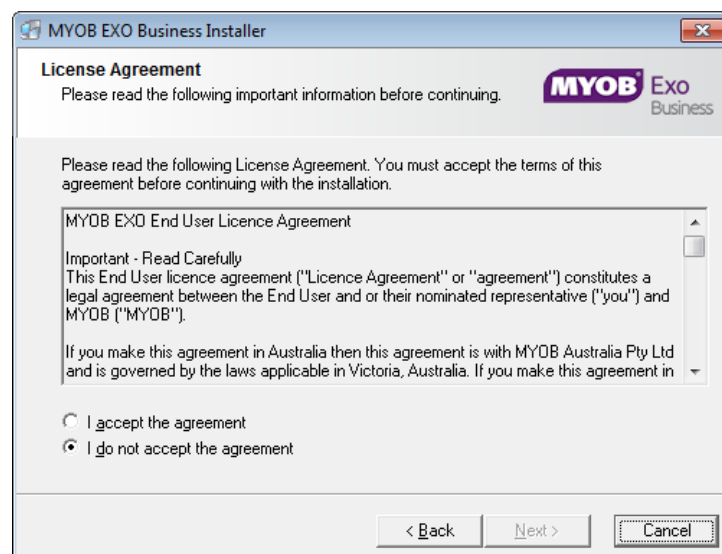
Note: Before you install this release, we recommend you take the precaution of backing up your data. Ensure there are no EXO Business modules running, locally or on your network.

To perform the installation:

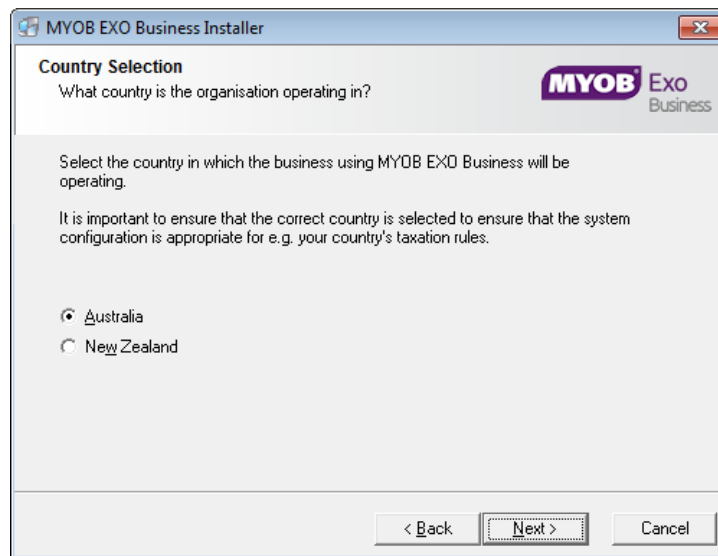
1. Insert the MYOB EXO Business CD and select **Install MYOB EXO Business** on the Install tab. If the install menu does not run automatically, run the **ExoBusinessInstaller.exe** program in the **Supporting Files** directory of the CD.
2. Click **Next** on the Welcome screen.



3. Read the licence agreement, then select **I accept the agreement** and click **Next**.



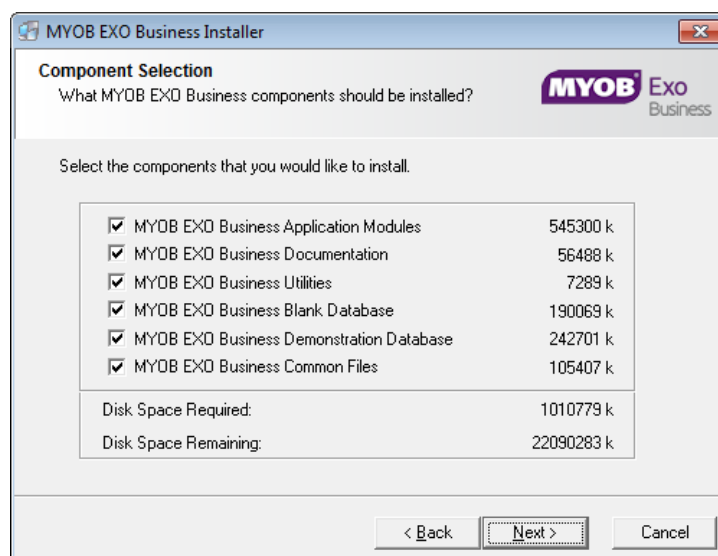
4. Select the country you are based in and click **Next**.



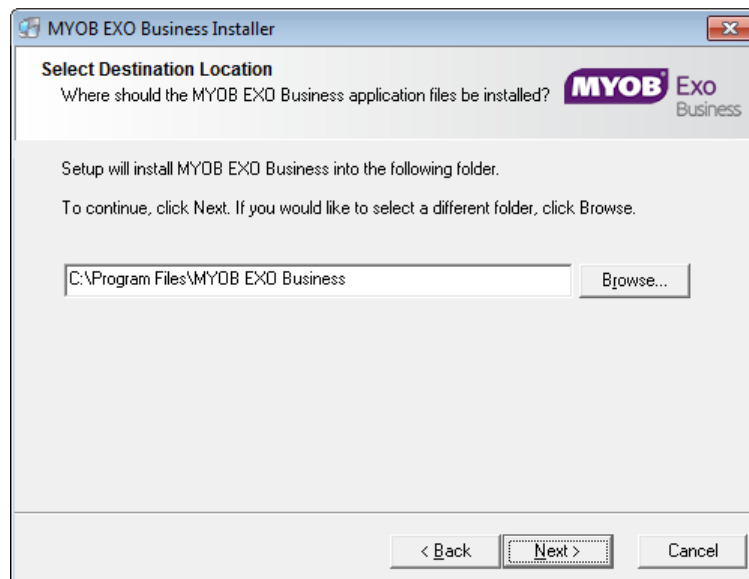
Note: Your selection here affects certain country-specific default settings that are set up during the install, e.g. tax rates and banks.

5. Select the components to install. Choose from:
 - MYOB EXO Business Application Modules
 - Documentation files
 - EXO Business utilities
 - A blank “live” MYOB EXO Business Database
 - A pre-configured demonstration database
 - EXO Business Common Files

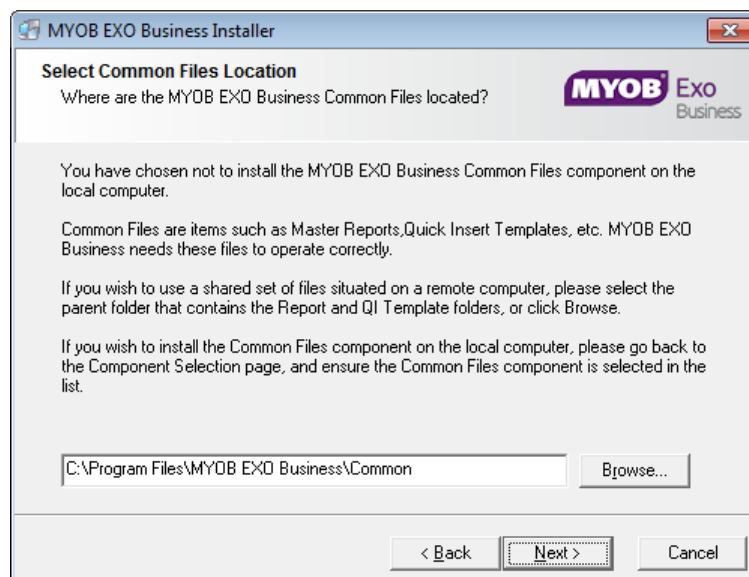
Click **Next** to continue.



6. If you chose to install the MYOB EXO Business Application Modules, click **Browse** to choose the directory where you want to install the program files, then click **Next**.



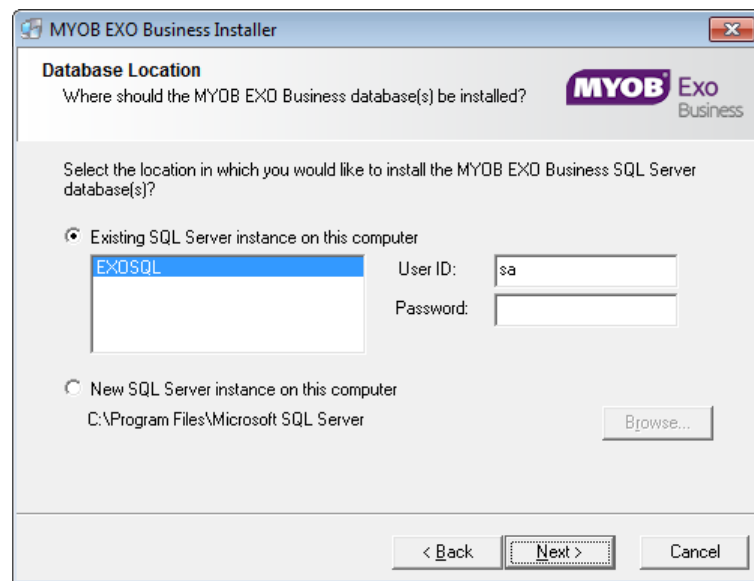
7. If the MYOB EXO Business Common Files are not installed on this PC, click **Browse** to choose the directory where the Common Files are located, then click **Next**.



8. If you chose to install the MYOB EXO Business Database components, you must specify where to install the database:
- To install on an existing SQL Server instance, select the instance and enter a user ID and password for that instance.
 - To create a new instance for the installation, select **New SQL Server instance on this computer**, then click **Browse** to choose the location of the new instance. This will install SQL Server 2008 Express Edition.

Note: See the Known Issues section on page 23 for information on the install prerequisites for SQL Server 2008 R2 SP1.

Click **Next**.



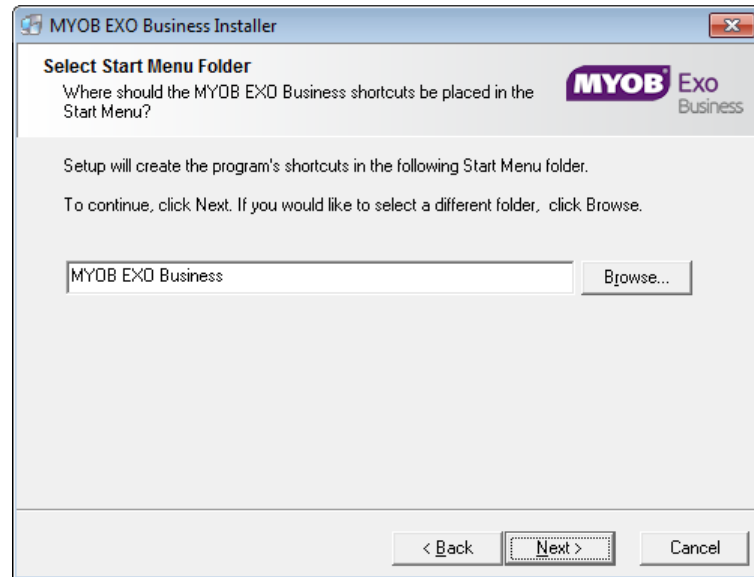
Note: The installer may appear unresponsive while it tries to detect SQL Server instances on the PC (this process may take a minute or more). Do not cancel the installer; simply wait until the detection operation is complete.

If you select to install a new instance of SQL Express, the logon details for the new instance will be:

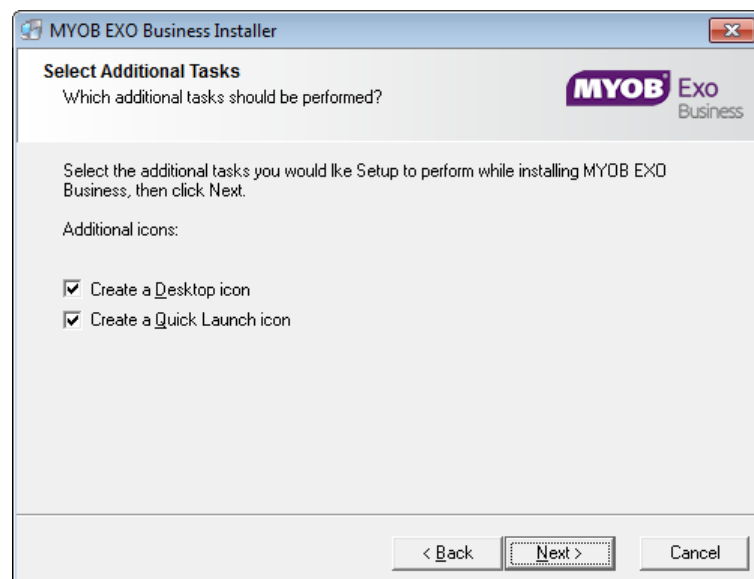
- Username: **sa**
- Password: **\$ExoAdmin7000**

You will need to supply these details when migrating data, or if you want to connect to the SQL Express instance for any other reason.

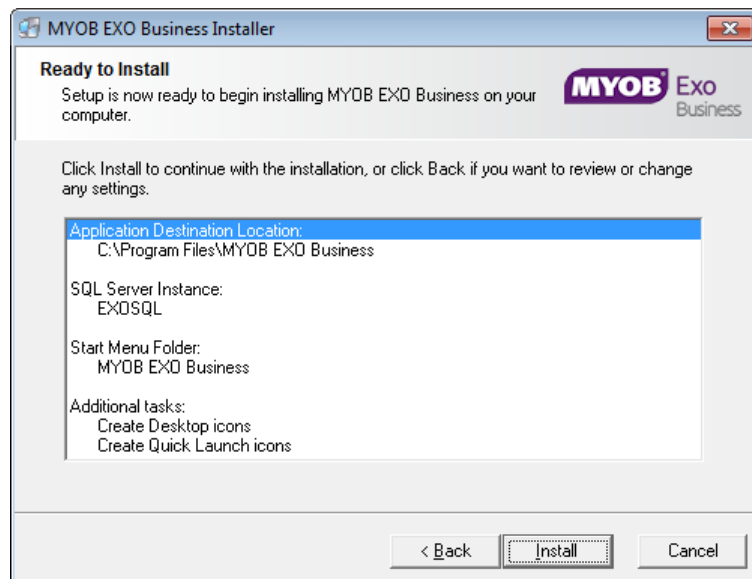
9. Click **Browse** to choose where the MYOB EXO Business shortcuts should be located in the Windows Start menu, then click **Next**.



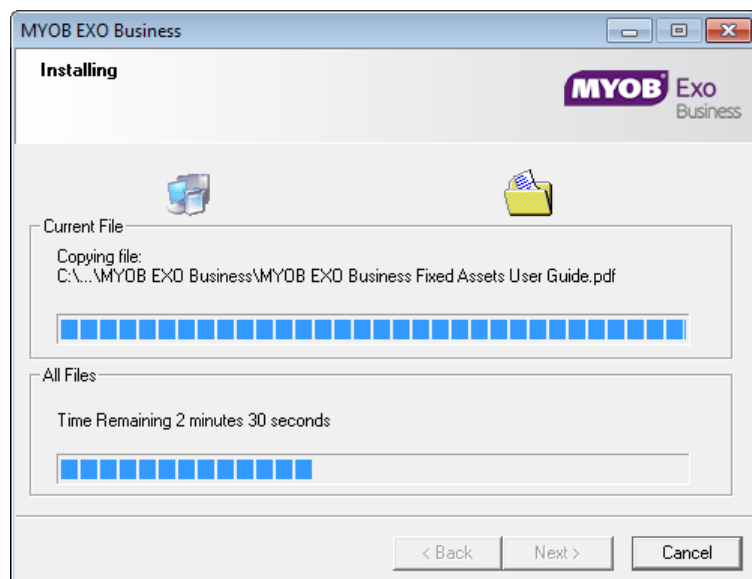
10. If you want to create a desktop icon or Quick Launch icon for MYOB EXO Business, tick the relevant box(es), then click **Next**.



11. The installation is ready to begin. Review the details and click **Install** to proceed. If you need to change any details, click **Back** to return to the previous screen and change your selections.



12. The installation progress is displayed.



Note: During installation, other windows may appear if SQL Express is being installed.

13. If you chose to install the application modules but not the database components on this PC, you must enter the details of the database once the installation has completed. Click **Test Connection** to check that the details you have entered work. If the test passes, click **Next**.

Note: Once a computer successfully connects to the database, a Computer profile is created for it in EXO Business Config.

14. The installation is now complete. Choose what to do next and click **Finish**:
- Run MYOB EXO Business to explore the demonstration database.
 - Run the Configuration Assistant to set up your new MYOB EXO Business database.
 - Return to Windows.

Post-Installation

Once MYOB EXO Business software is installed, it must be configured for use. Optionally, data can be migrated into the EXO Business system from another MYOB product. The configuration and migration processes are detailed in the *MYOB EXO Business Implementation Guide*.

Logging in to EXO Business

New MYOB EXO Business databases are installed with one or more default user accounts. When logging in to EXO Business for the first time, you must supply the following login details.

For a new blank database (EXO_LIVE):

- Default admin user = ExoAdmin
- Default admin password = ExoAdmin

For the demonstration database (EXO_DEMO):

- Default admin user = ExoAdmin
- Default admin password = ExoAdmin
- Default demo user = demo
- Default demo password = DEMO

Note: Passwords are case-sensitive.

Installing EXO Business Services

Once the EXO Business system is set up, you can install supporting services for the EXO API and EXO Email Service using the EXO Business Service Setup Wizard, **EXO Business Services Installer.msi**. This installer is supplied with the main EXO Business installer. It must be run on a server that already has EXO Business installed on it, and must be run from an account with administrative permissions.

To perform the installation:

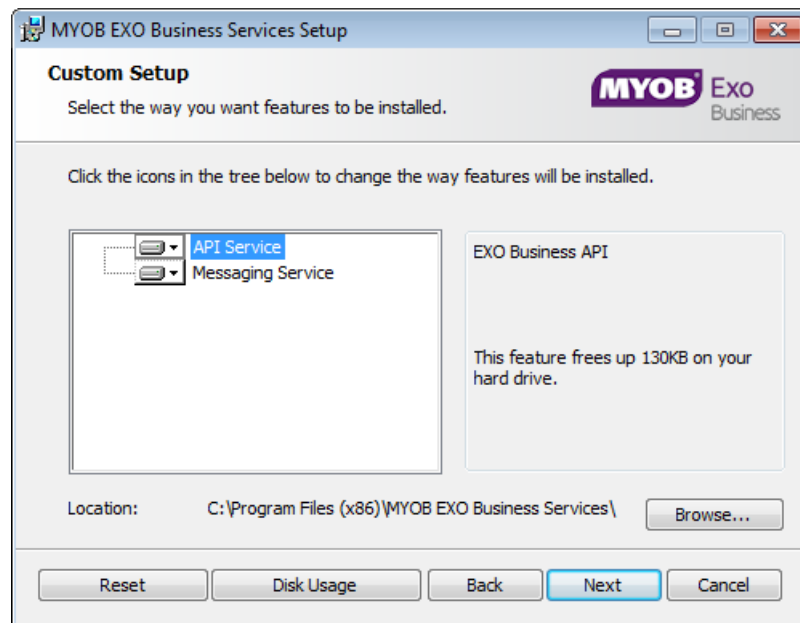
1. Double-click on the installer to run it. The welcome screen appears:



2. Click **Next**. The MYOB EXO End User Licence Agreement is displayed:



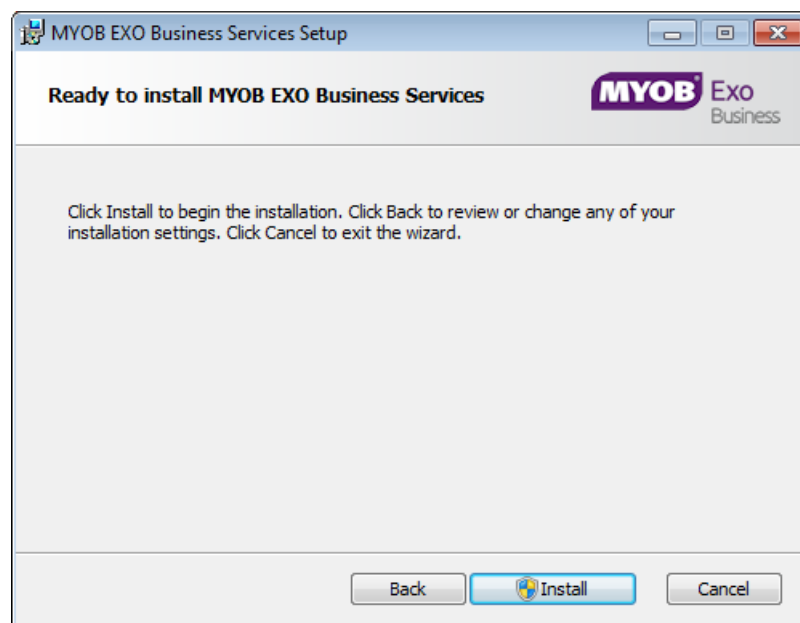
3. Tick **I accept the terms in the Licence Agreement** and click **Next** to continue.



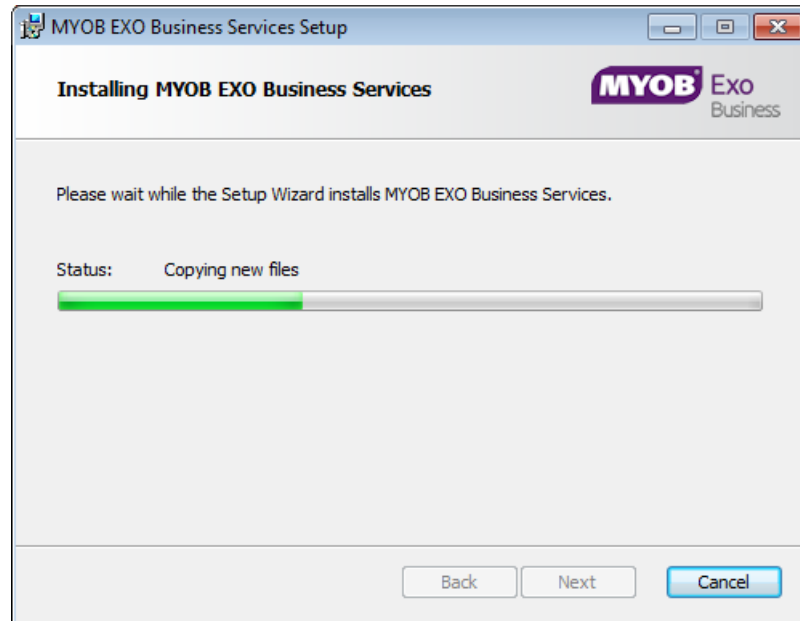
4. Select which components to install. Choose from:
 - The EXO API Service
 - The EXO Messaging Service

Note: The API configuration utilities are always installed (see “Setting up the Services” on page 15).

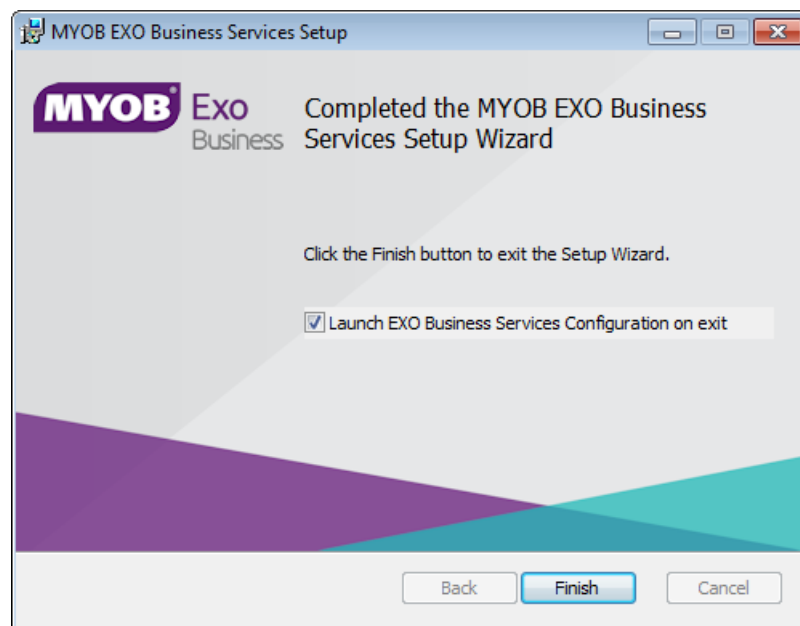
5. The install location is displayed at the bottom of the window. Click **Browse** to choose a different location if necessary.
6. Click **Next**. You are now ready to install the EXO Business services.



7. Click **Install** to begin the installation. The progress of the installation is displayed:



8. Once the installation is complete, click **Finish** to close the wizard. You can choose to open the EXO Business Service Configuration utility to set up details of the EXO API services.

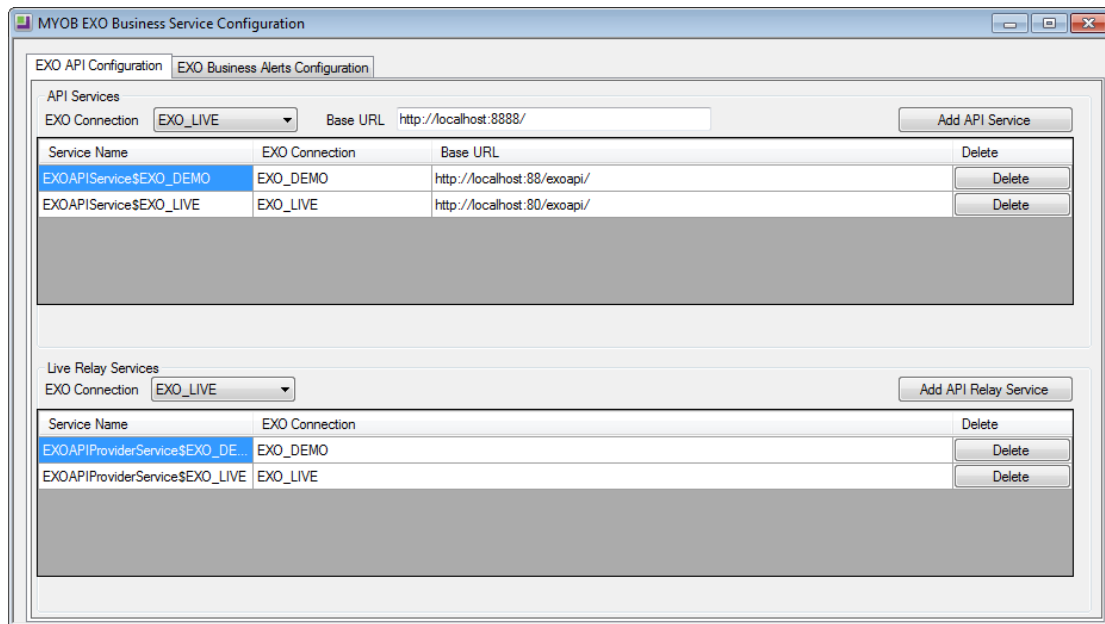


Note: The EXO Business Service Configuration utility is installed in the same location as the EXO API services. You can run the utility (**MYOB.ED.EXO.Cloud.ServiceConfig.exe**) from this location at any time.

Setting up the Services

The EXO Business services must be set up for each EXO Business database connection, using the MYOB EXO Business Service Configuration utility. This utility, **MYOB.ED.EXO.Cloud.ServiceConfig.exe**, can be run immediately after installation, or you can open it from the EXO services install directory at any time.

Note: All setup must be performed on the server that the EXO Business services are installed on, using an account with administrator privileges.



The utility displays configuration settings for the following services:

- EXO API Configuration
 - API Services – this is the main EXO API service.
 - API Provider Services – this service connects the EXO API to the online relay. This service is only needed this if you want to communicate with the EXO API remotely.
- EXO Business Alerts Configuration
 - Message Services – this is the EXO Business messaging (email) service.

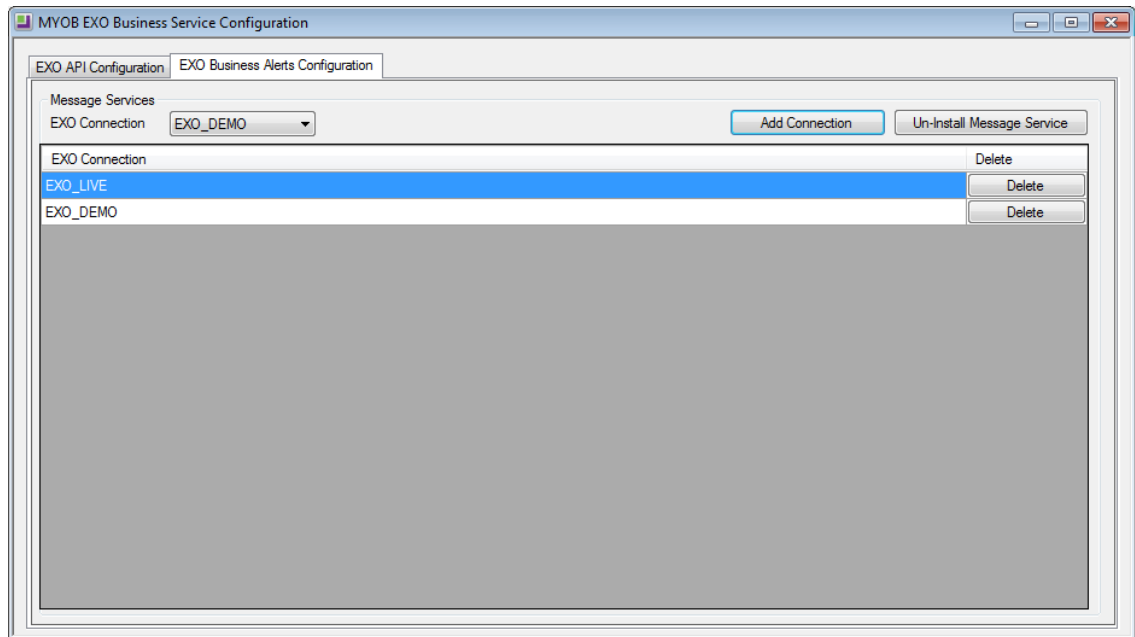
To configure an API service, select an EXO Business database connection, then click the relevant **Add Service** button. For the API Service, you must also enter a **Base URL**, which is the location and port the API is accessible on (the default should be suitable in most cases, unless you want to use a different directory and/or port).

Note: For local API access, ensure that your firewall is configured to allow the relevant ports, services and/or applications.

To validate that the EXO API has been successfully installed and set up, navigate to the Base URL in a web browser or REST client to see a list of available endpoints.

Installation

The configuration process for the messaging service is slightly different; where the API services create a separate instance for each EXO Business database connection, the messaging service has a single instance, which can have multiple connections to it.



To install the messaging service instance, select a database connection and click **Add Connection**. This adds the service and sets up a connection to the selected database. To add new connections, select them from the **EXO Connection** dropdown and click **Add Connection**.

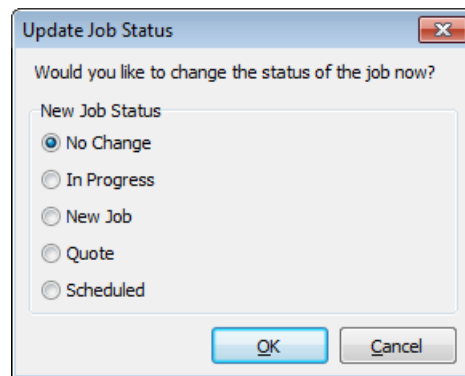
New Features

Updates to EXO Job Costing

Editing Job Invoices

This release adds the ability to edit invoices generated by the EXO Job Costing module. Users can edit the details of individual lines, delete lines and add new lines. Job invoices are edited in the same way as other Debtor invoices: right-click on the invoice on the Transactions tab of the Debtor Account Details window and select **Edit Job Invoice** to open the Edit Invoice window.

After making any edits to the invoice on a completed job, the system opens a window giving the option to change the job out of the “Completed” status:



Restrictions

The ability to edit job invoices is controlled by the existing **Permitted level of access to debtor transaction editing** User-level profile setting. This must be set to “Full invoice editing allowed” for users to be able to edit job invoices at the line level.

Regardless of the profile setting, an invoice cannot be edited if any of the following conditions apply:

- The invoice contains serialised stock items
- The invoice contains batch-tracked items
- The invoice has already been posted to the General Ledger
- The invoice is from a prior period

Editing Job Invoice Line Details

Users can edit selected details of each invoice line; the stockcode and quantity cannot be changed, but all other details are available for editing. This includes the item description, price and discount on each line.

Note: While users cannot change a line’s stockcode, it is possible to delete the line and add a new one with the new stockcode—see below.

Deleting Job Invoice Lines

Users can delete lines off a job invoice in the usual way—select the line and press the DELETE key. Deleting a line reverses the stock movement for that line, meaning that the stock item is returned to Work In Progress. This change is reflected in the job that the invoice originated from; the status of the relevant line is set back to “Ready to Invoice” on the Costs and Invoice tabs of the Job Details window.

Adding Lines to a Job Invoice

Users can add lines to a job invoice in the usual way—press the down arrow to add a new line then enter the detail. Adding a line to a job invoice creates a new transaction **with the default stock location, not the job’s location.**

The new line is visible on the invoice if you view it from the Billing Schedule tab of the Job Details window, but it does not appear on the Costs or Invoice tab.

Crediting Job Invoices

User can also credit job invoice by right-clicking on them and selecting **Generate Credit for Job Invoice**. When crediting a job invoice, users can edit line descriptions, but not stockcodes, quantity prices or discounts.

As with invoice editing, users can now remove lines from the credit, so that only some of the invoice is credited.

Note: Progress invoices cannot be credited from the Debtors Transactions tab; they must be credited from within EXO Job Costing. It is not possible to delete lines from a progress invoice credit.

Un-Write Off

This release reintroduces the ability “un-write off” job lines. The **UnWrite-off** right-click option is now available on the Costs and Invoice tabs.

Selecting this option generates new stock transactions to reverse the write off transactions and return the stock item to WIP. The sell price is now re-inserted to the price before write off. For periodic inventory systems, the WIP In date is set to the original date; otherwise it is set to the current date. The WIP Out date on the job transaction is set to null. The stock transaction does not affect average cost (because it is into WIP).

Changes to EXO CRM

These changes were introduced in EXO Business 2015.1.2

As of the 2015.1.2 release, all EXO CRM Advantage features are now available in EXO CRM, and a separate EXO CRM Advantage licence is no longer required. EXO CRM Advantage is no longer a separate product.

The following features, previously only available in EXO CRM Advantage, are now available from the EXO CRM module:

- Users can set up pricing and discounting details from within EXO CRM. This includes access to the Discounts/Prices tab on the Debtor Account Details window and access to the Price Change Scheduler, Price Update Utility and Setup Price Policies functions.
- Users can create a Sales Order directly from EXO CRM, without first having to save it as a quote.
- Users can edit Sales Orders from within EXO CRM, provided they have the status “Not Processed”, “Quotation”, “Standing Order” or “Layby”.
- Users can access the **Generate POs** button on the Sales Order window to create “back-to-back” Purchase Orders (but cannot create Purchase Orders in any other way).
- Users can create and edit stock items from within EXO CRM, including One-Off Stock items.
- Users can create and edit Bills of Materials in EXO CRM.
- Serial number and batch number searching and tracking functionality is available in EXO CRM. This includes access to the Setup Stock Serial Numbers, Serial Number Tracking and Setup Stock Batch Code functions.

Note: Users cannot process Sales Orders, supply stock or raise invoices from EXO CRM. Similarly, users cannot process Bills of Materials.

Changes to EXO OnTheGo

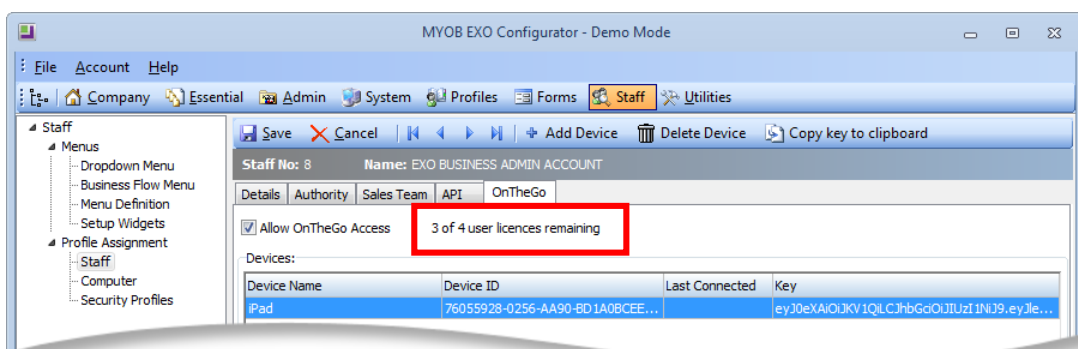
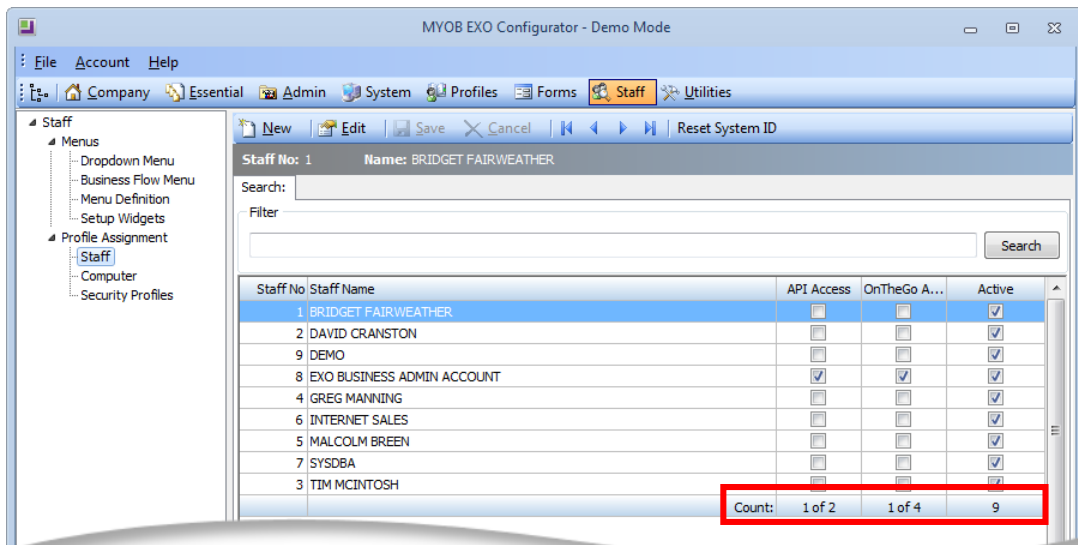
These changes were introduced in EXO Business 2015.1.2

As of the 2015.1.2 release, each core Finance, Job Costing and CRM user licence will entitle the client to one licence to EXO OnTheGo at no additional charge. For example, a client with 5 Finance users and 10 CRM users will have 15 EXO OnTheGo licences. Additional licences over and above the free entitlement can be purchased through the standard order process.

Note: You must also install version 1.2 SP1 of the EXO API to take advantage of these licensing changes.

When EXO Business 2015.1.3 or later is installed, the “EXO OnTheGo Sales” module will be added as a module on the Registration screen of the EXO Business Configurator automatically (if it is not already there). If the client is using free OnTheGo licences only, this module will not contain a Registration Key and will appear red—this is not a problem, and the system will function as normal. If additional licences are purchased, then the “EXO OnTheGo Sales” module will need to be updated with a valid Registration Key.

The EXO Business Configurator and EXO OnTheGo Configurator now display the total number of available EXO OnTheGo licences (free and purchased) in the Staff section:



Resolved Issues

EXO Business Core

Service Request ID	Description
113057831609 113852152731 113197173291 112905751244 112905751231	Purchase Orders could not be generated when the profile setting Allow purchase pack description, quantity and price for alternate suppliers was disabled, as the line total would be incorrectly written to the discount amount. This has been resolved.
113280297782 113023754641	When running the EXO Business core module in POS mode, i.e. running Exonet.exe /POS , an “access violation” error message appeared when trying to search stock. This has been resolved.
11398649126 11400129003 11400128940 11400128907 11400128881 11400128737 11399674654 11399674420 11399674397 11398649283 11398649220 11398649183 11398648566	<i>This issue was resolved in EXO Business 2015.1.2</i> If there were more than 10 sell prices on stock items in an installation of EXO Business that was upgraded from Interbase to SQL Server, it was not possible to view a Bill of Materials. This has been resolved.
13518559644 14511660263 14511660249 14511660232 14511660218 14511660204 14450233176 14450233164 14450233151 13423299221	<i>This issue was resolved in EXO Business 2015.1.2</i> When authorisation was enabled for Purchase Orders, if a user opened and saved a Purchase Order that was in the “Awaiting Authorisation” state and had a value that was lower than the user’s authorisation limit, the order would be changed to the “Not Processed” state, i.e. authorised, even though the user had not authorised it (using the right-click menu on the Purchase Order search screen). This has been resolved.
-	<i>This issue was resolved in EXO Business 2015.1.2</i> On the Purchase Order window, the line total column was not present if the profile setting Allow manual entry of discounts on creditor invoice and purchase order lines (CRLINEDISCS) was enabled, which was inconsistent with the behaviour Creditor Invoice window. This has been resolved; the total column is now always visible when the CRLINEDISCS setting is enabled.

EXO Job Costing

Service Request ID	Description
16037138733 19849373561 19336793571 16006389411	This release re-introduces the “Un-Write Off” option—see page 18.
11785905494 110040551551 12419536130 12419536121 12190564351 11280740158	<i>This issue was resolved in EXO Business 2015.1.2</i> The branch of job invoices was not populated correctly if the branches had non-sequential numbering. This has been resolved.
111530778878 111409846294	<i>This issue was resolved in EXO Business 2015.1.2</i> Line numbers did not update correctly when adding stock items to a Bill of Materials on a job. This has been resolved.

EXO Intercompany

Service Request ID	Description
110475631669 17582658601	<p><i>This issue was resolved in EXO Business 2015.1.1</i></p> <p>When consolidating records, the PERIOD_SEQNO in the target database was recorded as that of the source database, which was likely to be invalid. This has been resolved; the system now behaves as follows:</p> <ul style="list-style-type: none"> • If a period does not exist in the target database and the profile setting Inter-Company ledger period synchronisation is set to “Do not enforce”, then transactions for that period are no longer downloaded, but other transactions are. • If a period does not exist in the target database and the profile setting Inter-Company ledger period synchronisation is set to “Enforce”, then the process stops and no transactions are downloaded. <p>When using the Intercompany Creditor Invoice or Intercompany GL Transaction options in the EXO Business core module, the transaction date details of source transactions are now always copied to the target transaction (on batch headers and lines). The system attempts to determine the period to post into based on the transaction date.</p> <p>Where a transaction cannot be inserted because the period does not exist in the target database or the period is locked, the user is warned and prevented from proceeding until the situation is resolved.</p> <p>As a related issue, when opening a suspended batch on the General Ledger Transaction Entry and Intercompany GL Transaction Entry screens, the system ignored the date and period recorded on the suspended batch and set it to the current date and period. This has been resolved.</p>

Known Issues

The following issues have been identified as requiring end-user attention in this release.

Installation/Upgrade Issues

- If you are using the MYOB EXO Business Installation Wizard to install an instance of SQL Express, the following must be present on the PC:
 - .NET Framework 3.5 SP1 – you can download this from:
<http://go.microsoft.com/fwlink/?LinkId=120550>
 - Windows Installer 4.5 – you can download this from:
<http://go.microsoft.com/fwlink/?LinkId=123422>
 - Windows PowerShell 1.0 – you can download this from:
<http://go.microsoft.com/fwlink/?LinkId=120552>
- Due to security settings imposed by Windows, CHM Help files cannot be viewed from a remote location—this means that you can only view the EXO Business Help files if they have been installed on the local PC. See [Microsoft Knowledge Base article 892675](#) for more information on this issue and suggested workarounds.

Demo Data Issues

The stored procedure SP_DEMO_DATA_DATE_UPDATER, which updates the data in demo databases to the current date, was updated in EXO Business 8.4. This stored procedure is only available in the EXO_DEMO database, which means that any existing demonstration databases used by partners will not be able roll their demo data forward; these databases will need to be re-created based on the updated EXO_DEMO database in order to use the updated SP_DEMO_DATA_DATE_UPDATER procedure.

Job Costing Resource Issues

When a resource allocation is created, an Activity for the relevant staff member is automatically created in the EXO Business system; however, if the resource is not associated with a staff member, the Activity will not appear on the Activity Search widget on the Task Scheduler tab.

As a workaround, a dummy staff account can be created to associate non-staff Resources with.