

MYOB EXO Business

Release Notes

2016.1

Contents

Introduction	1
What's New in this Release?	1
Installation	2
Pre-Install Requirements	2
Database Server	2
Client Workstation	3
Other Requirements	3
Installing MYOB EXO Business	4
Post-Installation	11
Logging in to EXO Business	11
Installing EXO Business Services	12
Setting up the Services	15
New Features	18
Important Upgrade Notice	18
Updates to Non Accounts	18
Active Flag	18
Restricting the Ability to Convert Non Accounts	18
Composite Business Alerts	19
Deposits on Sales Orders in EXO POS	20
Documents on Works Orders	21
Line Ordering on Subscriptions	21

Resolved Issues	22
EXO Business Core.....	22
EXO Job Costing.....	24
EXO Intercompany.....	24
EXO CRM	25
Known Issues	26
Appendix 1: Profile Settings	28

Introduction

What's New in this Release?

The 2016.1 release is focussed on addressing items most requested by users and implementers of the EXO Business system. Some of these are entirely new features to the system; others are sometimes subtle but valuable changes aimed at further improving the efficiency of existing functionality or removing complexity. The changes are not localised; rather, they are across the scope of the entire EXO Business suite with circumspect changes in almost every area including Job Costing, CRM, Subscriptions, Serviceable Units, Enhanced POS and the Intercompany module.

The purpose of this document is to provide essential information on the installation and use of this release:

- The **Installation** section provides an overview of the installation process, including pre-installation requirements and post installation steps.
- The **New Features** section describes all new features introduced in this release.
- The **Resolved Issues** section describes all issues that have been addressed by this release.
- The **Known Issues** section details any issues in this release that have been identified as requiring attention.
- The **New Profile Settings** appendix at the end of this document summarises all changes to EXO Business profile settings included in this release.

Installation

Pre-Install Requirements

Minimum system requirements for PCs running MYOB EXO Business components are detailed below. Full details of requirements and supported operating systems for MYOB EXO Business are available on the [Minimum System Requirements page on the MYOB website](#).

The performance of the EXO Business system is not assured if these requirements are not met. Similarly, performance cannot be assured if the EXO Business system is installed on a server that is already under load from other processes, or a RDBMS that is not suitable for the organization's volume of data (see "SQL Express" on page 3).

Database Server

Any server where an MYOB EXO Business database is installed should meet the following minimum requirements:

- Windows Server 2008, Windows Server 2012
- The latest Service Pack for the Windows operating system
- Intel Pentium® 4 2.4Ghz processor (or equivalent)
- 2 GB RAM
- 20 GB of hard disk space + 10 MB per user
- Microsoft Data Access Components (MDAC) 2.8 or later
- A supported version of Microsoft SQL Server:
 - Microsoft SQL Server 2008 R2/SQL 2008 R2 Express Edition
 - Microsoft SQL Server 2012/SQL 2012 Express Edition (however, see the Known Issue on page 27).
 - Microsoft SQL Server 2014/SQL 2014 Express Edition
- The latest Service Pack for the version of SQL Server you are using

MYOB EXO Business 2016.1 works best on Microsoft SQL Server 2014 (version 12.0.2495.0) Standard or Enterprise editions.

SQL Server

Microsoft SQL Server must be present on the EXO Business Database Server. If you want to use a specific edition of SQL Server, make sure it is installed before running the Installation Wizard. If SQL Server is not installed, the EXO Business Installation Wizard can install SQL Server 2008 R2 SP1 Express Edition (SQL Express) as part of the installation process (see page 7). Whichever version of SQL Server you use, it must be set up to use Mixed Mode authentication.

Installation

The blank and demo databases supplied with EXO Business have their compatibility levels set to “SQL Server 2008 (100)”. When upgrading from a previous version of EXO Business, database compatibility levels are updated automatically as follows:

- SQL Server 2008 and later databases are set to compatibility level 100.
- Older versions of SQL Server are not updated.

See the following web page for information on compatibility levels:

<http://msdn.microsoft.com/en-us/library/bb510680.aspx>

SQL Express

SQL Express may not be suitable for businesses with many users. SQL Express has limits on the amount of RAM and number of processors it can use, which affects the number of concurrent users that the EXO Business database can support. See the following MSDN article for more information:

<http://msdn.microsoft.com/en-us/library/cc645993.aspx>

Client Workstation

Any client workstation running the MYOB EXO Business application modules should meet the following minimum requirements:

- Windows 7 Enterprise, Windows 7 Professional, Windows 7 Ultimate, Windows 8
- The latest Service Pack for the Windows operating system
- Intel Pentium® 4 1.3 GHz processor (or equivalent)
- Hard disk space as required for the operating system
- 16-bit colour, 1024×768 screen resolution

Other Requirements

Certain features of MYOB EXO Business require one or more of the following:

- Internet access
- Microsoft Internet Explorer 7.0 or later
- Adobe® Acrobat Reader 7.0 or later

Microsoft Office connection requires Microsoft Word/Excel 2010 to 2013.

Contact synchronisation requires Microsoft Outlook 2010 to 2013.

MYOB EXO Business 2016.1 requires **ExonetLib.dll** version 2016.1.0 or later. Version 2016.1.0 is included with this release.

When installing manually on 64-bit operating systems, the file **RwEasyMAPI64.exe** must be copied from the **Supporting Files\RapWare** folder of the EXO Business DVD to the install directory. Register this file by running `RwEasyMAPI64.exe /regserver` from a command prompt.

Installing MYOB EXO Business

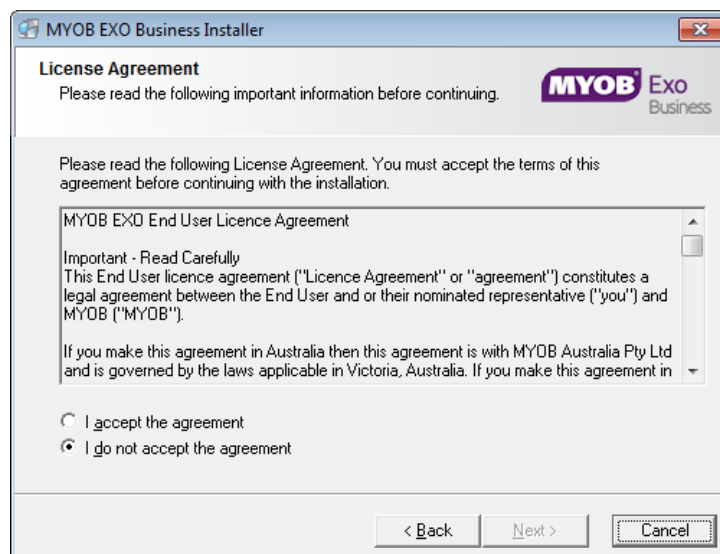
Note: Before you install this release, we recommend you take the precaution of backing up your data. Ensure there are no EXO Business modules running, locally or on your network.

To perform the installation:

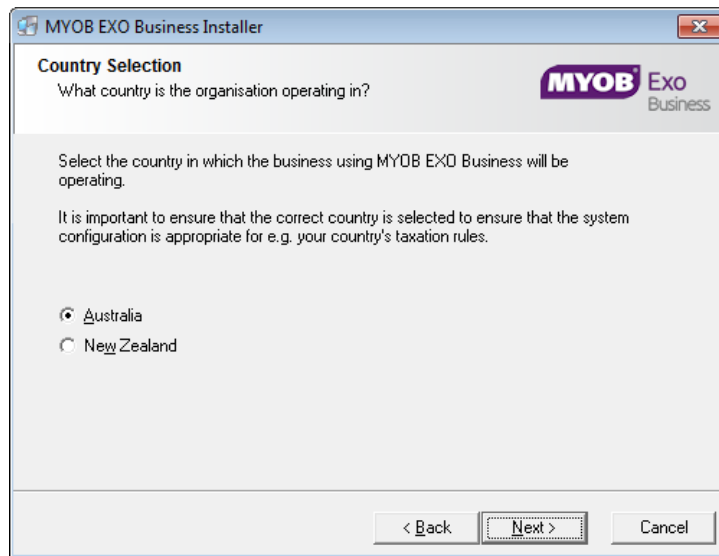
1. Insert the MYOB EXO Business CD and select **Install MYOB EXO Business** on the Install tab. If the install menu does not run automatically, run the **ExoBusinessInstaller.exe** program in the **Supporting Files** directory of the CD.
2. Click **Next** on the Welcome screen.



3. Read the licence agreement, then select **I accept the agreement** and click **Next**.



4. Select the country you are based in and click **Next**.

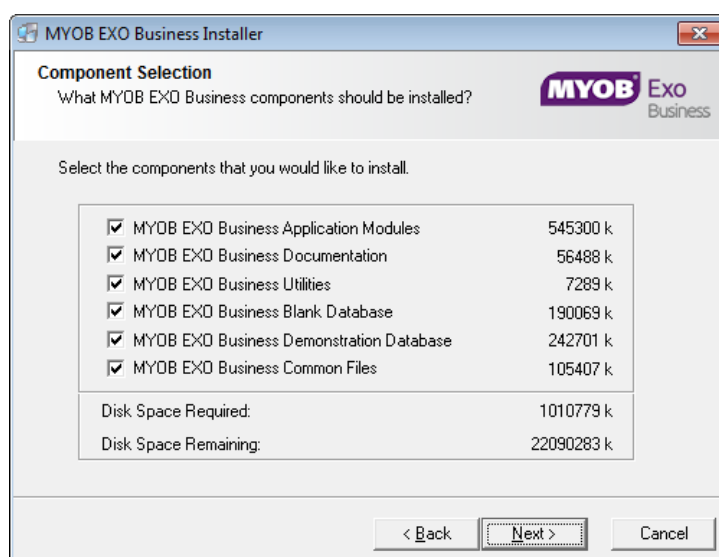


Note: Your selection here affects certain country-specific default settings that are set up during the install, e.g. tax rates and banks.

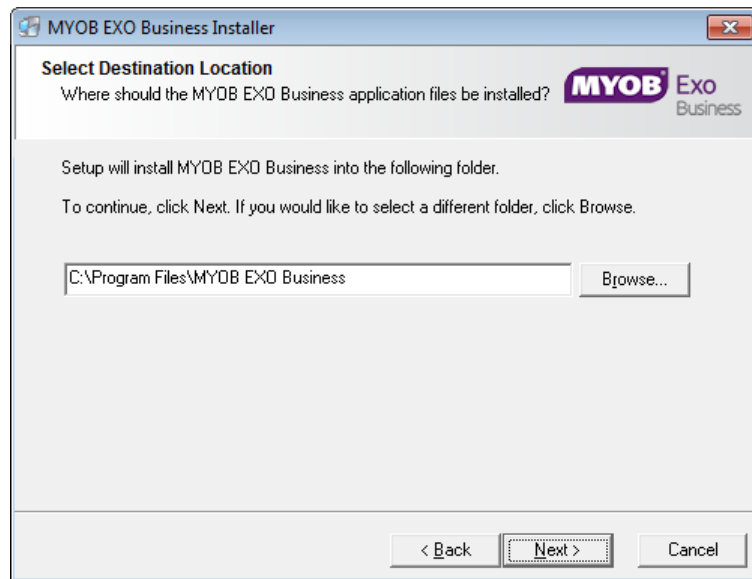
5. Select the components to install. Choose from:

- MYOB EXO Business Application Modules
- Documentation files
- EXO Business utilities
- A blank “live” MYOB EXO Business Database
- A pre-configured demonstration database
- EXO Business Common Files

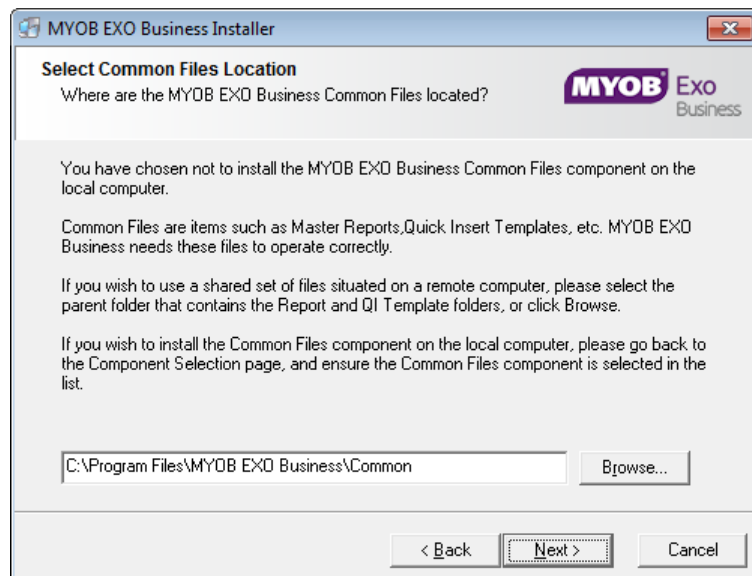
Click **Next** to continue.



6. If you chose to install the MYOB EXO Business Application Modules, click **Browse** to choose the directory where you want to install the program files, then click **Next**.



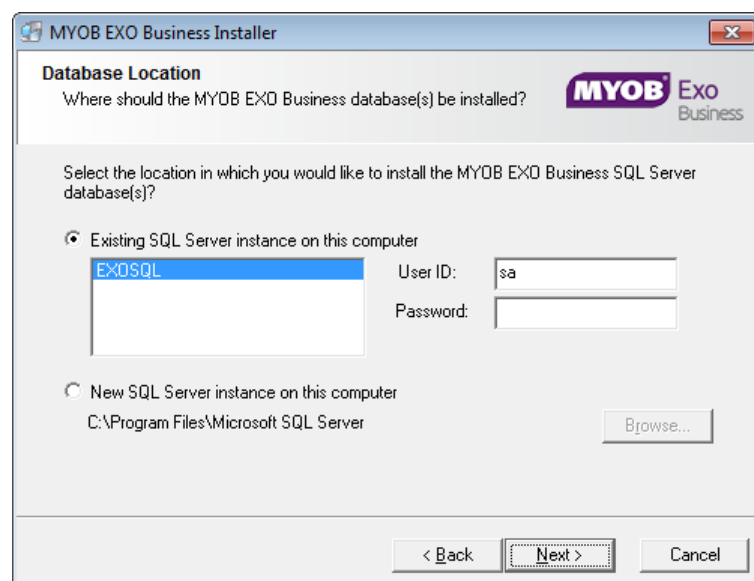
7. If the MYOB EXO Business Common Files are not installed on this PC, click **Browse** to choose the directory where the Common Files are located, then click **Next**.



8. If you chose to install the MYOB EXO Business Database components, you must specify where to install the database:
- To install on an existing SQL Server instance, select the instance and enter a user ID and password for that instance.
 - To create a new instance for the installation, select **New SQL Server instance on this computer**, then click **Browse** to choose the location of the new instance. This will install SQL Server 2008 Express Edition.

Note: See the Known Issues section on page 24 for information on the install prerequisites for SQL Server 2008 R2 SP1.

Click **Next**.



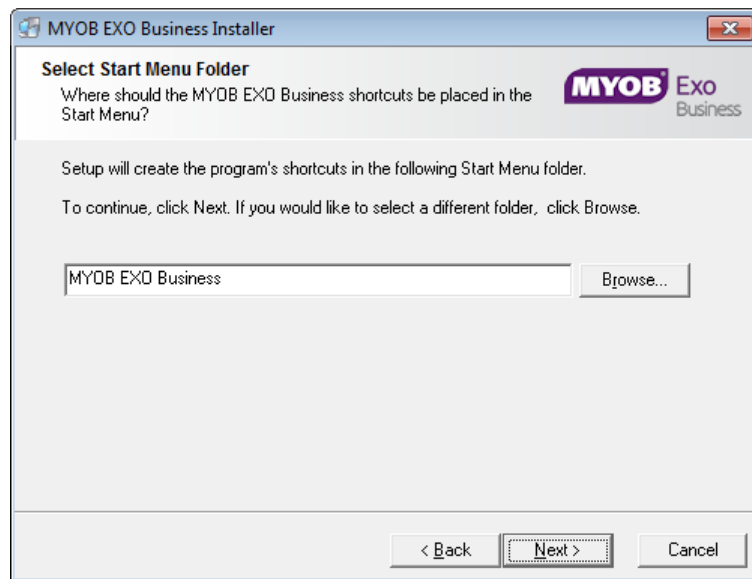
Note: The installer may appear unresponsive while it tries to detect SQL Server instances on the PC (this process may take a minute or more). Do not cancel the installer; simply wait until the detection operation is complete.

If you select to install a new instance of SQL Express, the logon details for the new instance will be:

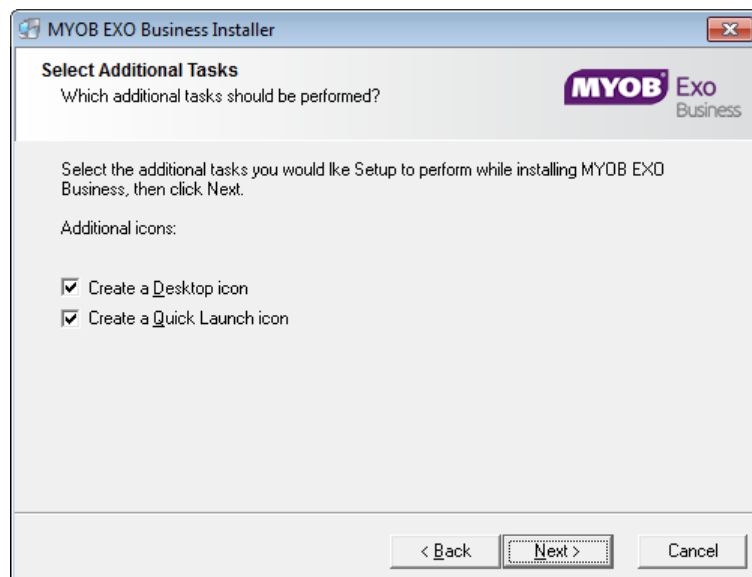
- Username: **sa**
- Password: **\$ExoAdmin7000**

You will need to supply these details when migrating data, or if you want to connect to the SQL Express instance for any other reason.

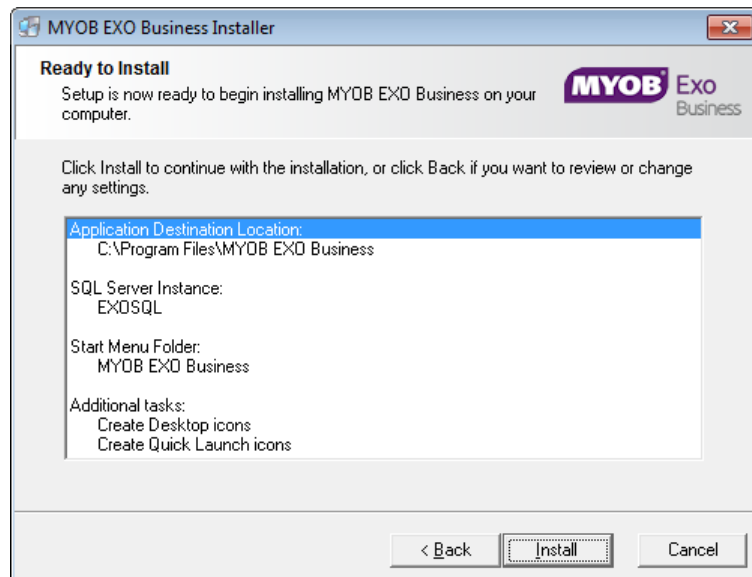
9. Click **Browse** to choose where the MYOB EXO Business shortcuts should be located in the Windows Start menu, then click **Next**.



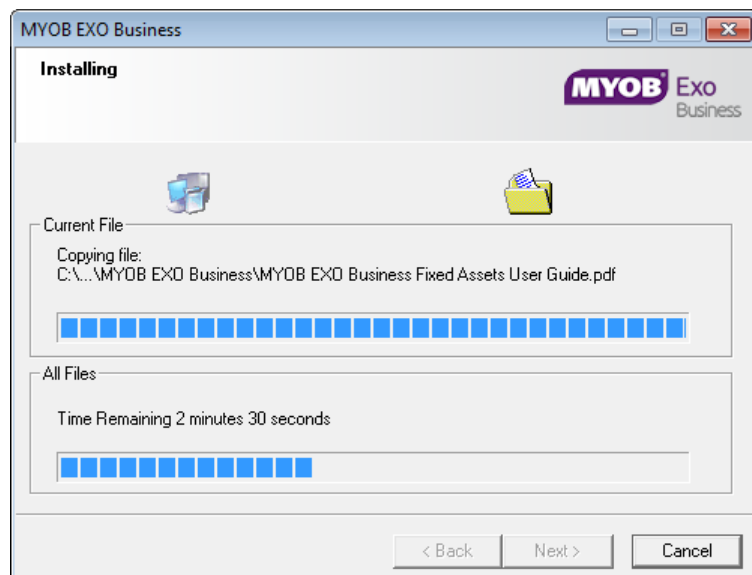
10. If you want to create a desktop icon or Quick Launch icon for MYOB EXO Business, tick the relevant box(es), then click **Next**.



11. The installation is ready to begin. Review the details and click **Install** to proceed. If you need to change any details, click **Back** to return to the previous screen and change your selections.



12. The installation progress is displayed.



Note: During installation, other windows may appear if SQL Express is being installed.

13. If you chose to install the application modules but not the database components on this PC, you must enter the details of the database once the installation has completed. Click **Test Connection** to check that the details you have entered work. If the test passes, click **Next**.

Note: Once a computer successfully connects to the database, a Computer profile is created for it in EXO Business Config.

14. The installation is now complete. Choose what to do next and click **Finish**:
- Run MYOB EXO Business to explore the demonstration database.
 - Run the Configuration Assistant to set up your new MYOB EXO Business database.
 - Return to Windows.

Post-Installation

Once MYOB EXO Business software is installed, it must be configured for use. Optionally, data can be migrated into the EXO Business system from another MYOB product. The configuration and migration processes are detailed in the *MYOB EXO Business Implementation Guide*.

Logging in to EXO Business

New MYOB EXO Business databases are installed with one or more default user accounts. When logging in to EXO Business for the first time, you must supply the following login details.

For a new blank database (EXO_LIVE):

- Default admin user = ExoAdmin
- Default admin password = ExoAdmin

For the demonstration database (EXO_DEMO):

- Default admin user = ExoAdmin
- Default admin password = ExoAdmin
- Default demo user = demo
- Default demo password = DEMO

Note: Passwords are case-sensitive.

Installing EXO Business Services

Once the EXO Business system is set up, you can install supporting services for the EXO API and EXO Email Service using the EXO Business Service Setup Wizard, **EXO Business Services Installer.msi**. This installer is supplied with the main EXO Business installer. It must be run on a server that already has EXO Business installed on it, and must be run from an account with administrative permissions.

To perform the installation:

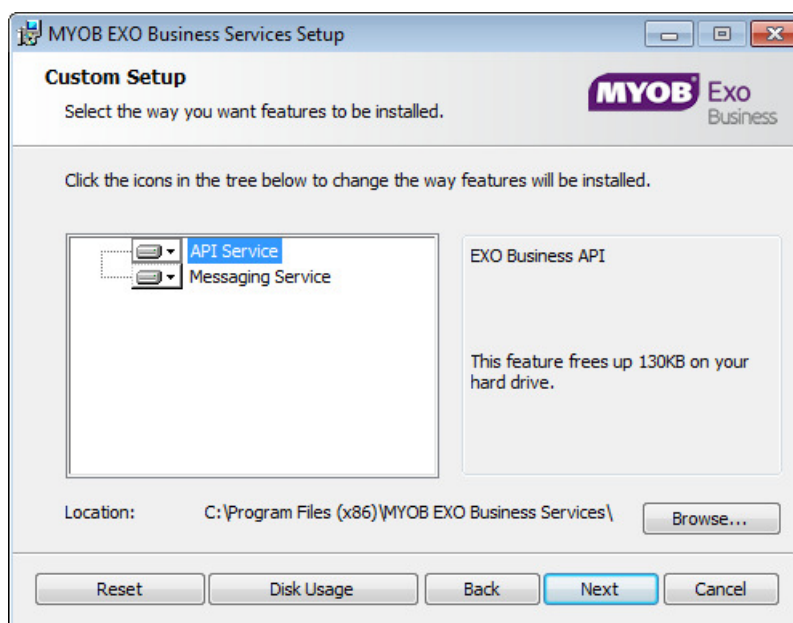
1. Double-click on the installer to run it. The welcome screen appears:



2. Click **Next**. The MYOB EXO End User Licence Agreement is displayed:



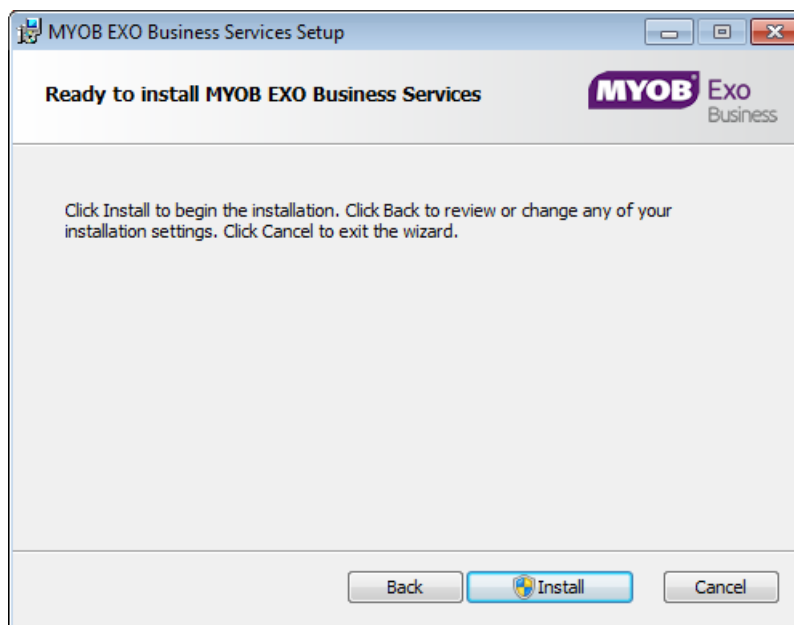
3. Tick **I accept the terms in the Licence Agreement** and click **Next** to continue.



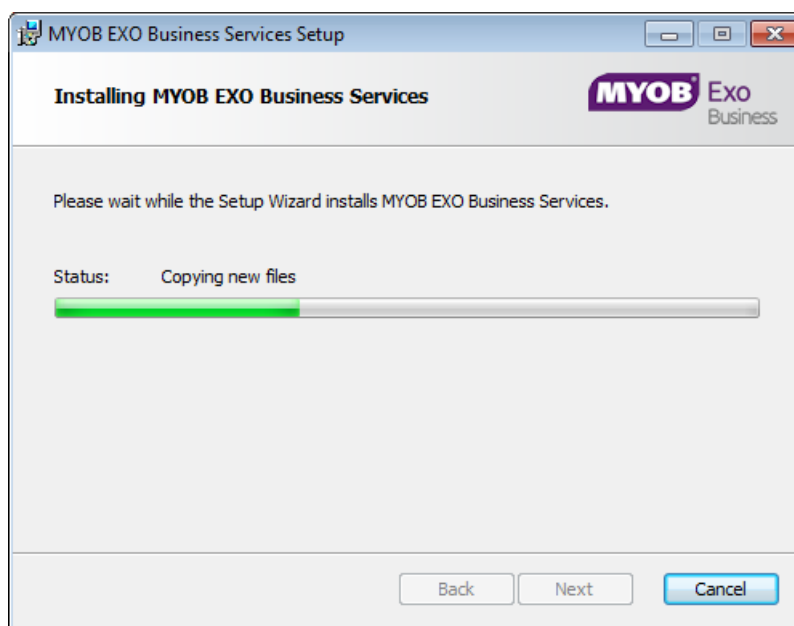
4. Select which components to install. Choose from:
 - The EXO API Service
 - The EXO Messaging Service

Note: The API configuration utilities are always installed (see “Setting up the Services” on page 15).

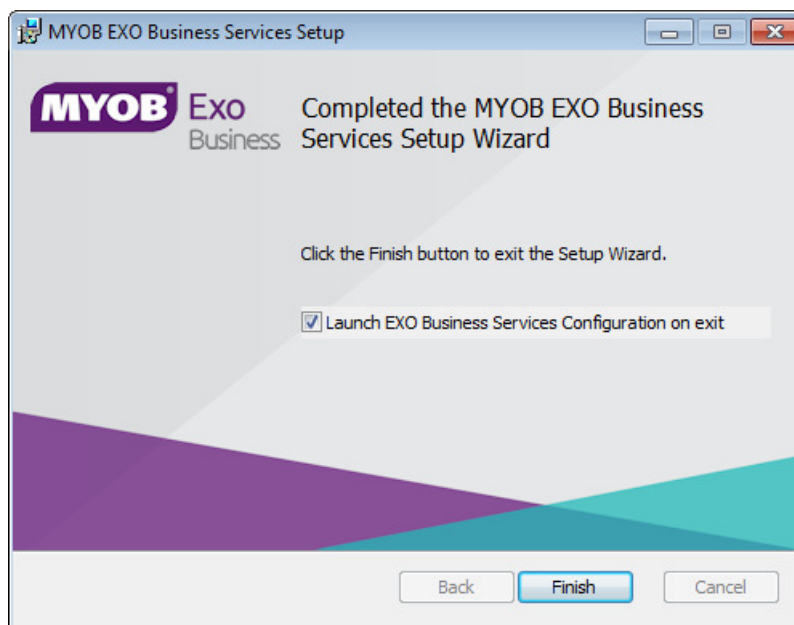
5. The install location is displayed at the bottom of the window. Click **Browse** to choose a different location if necessary.
6. Click **Next**. You are now ready to install the EXO Business services.



7. Click **Install** to begin the installation. The progress of the installation is displayed:



8. Once the installation is complete, click **Finish** to close the wizard. You can choose to open the EXO Business Service Configuration utility to set up details of the EXO API services.

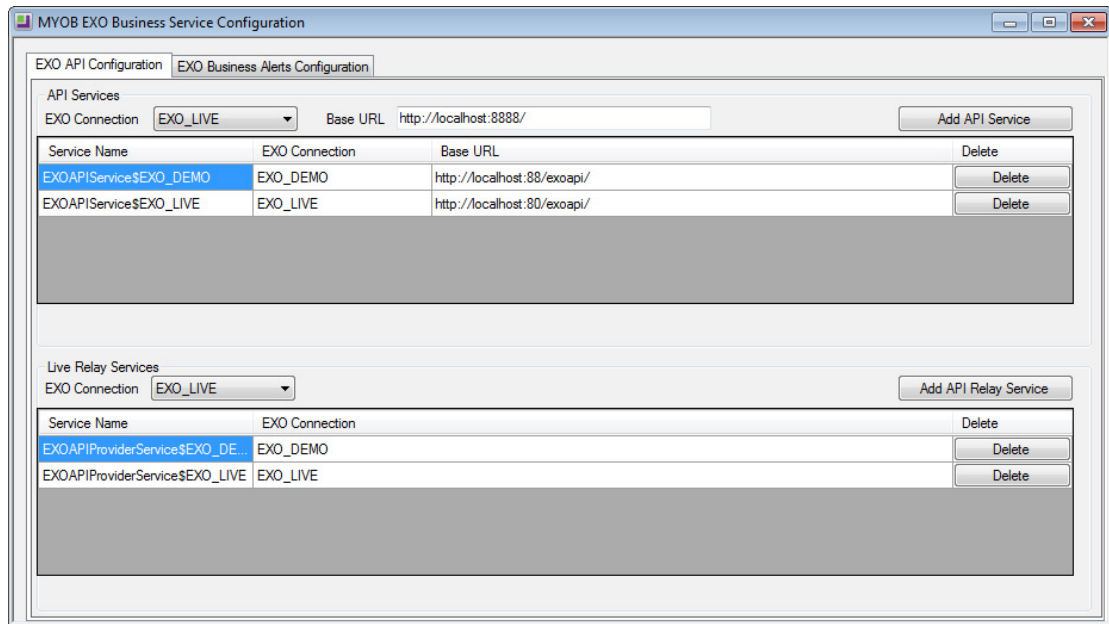


Note: The EXO Business Service Configuration utility is installed in the same location as the EXO API services. You can run the utility (**MYOB.ED.EXO.Cloud.ServiceConfig.exe**) from this location at any time.

Setting up the Services

The EXO Business services must be set up for each EXO Business database connection, using the MYOB EXO Business Service Configuration utility. This utility, **MYOB.ED.EXO.Cloud.ServiceConfig.exe**, can be run immediately after installation, or you can open it from the EXO services install directory at any time.

Note: All setup must be performed on the server that the EXO Business services are installed on, using an account with administrator privileges.



The utility displays configuration settings for the following services:

- EXO API Configuration
 - API Services – this is the main EXO API service.
 - API Provider Services – this service connects the EXO API to the online relay. This service is only needed this if you want to communicate with the EXO API remotely.
- EXO Business Alerts Configuration
 - Message Services – this is the EXO Business messaging (email) service.

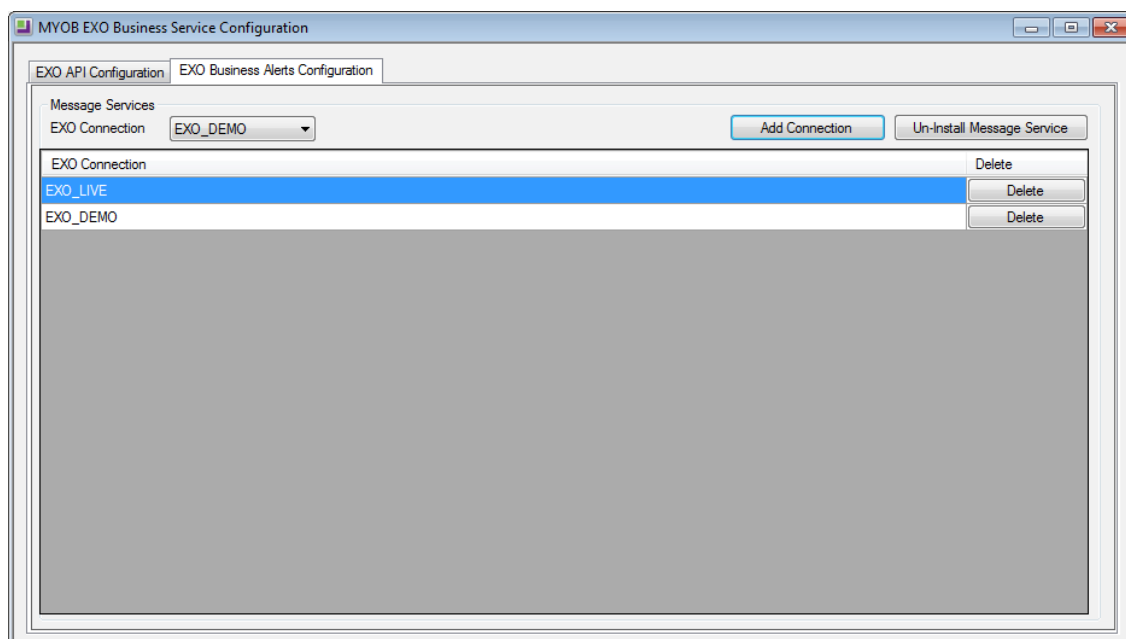
To configure an API service, select an EXO Business database connection, then click the relevant **Add Service** button. For the API Service, you must also enter a **Base URL**, which is the location and port the API is accessible on (the default should be suitable in most cases, unless you want to use a different directory and/or port).

Note: For local API access, ensure that your firewall is configured to allow the relevant ports, services and/or applications.

To validate that the EXO API has been successfully installed and set up, navigate to the Base URL in a web browser or REST client to see a list of available endpoints.

Installation

The configuration process for the messaging service is slightly different; where the API services create a separate instance for each EXO Business database connection, the messaging service has a single instance, which can have multiple connections to it.



To install the messaging service instance, select a database connection and click **Add Connection**. This adds the service and sets up a connection to the selected database. To add new connections, select them from the **EXO Connection** dropdown and click **Add Connection**.

New Features

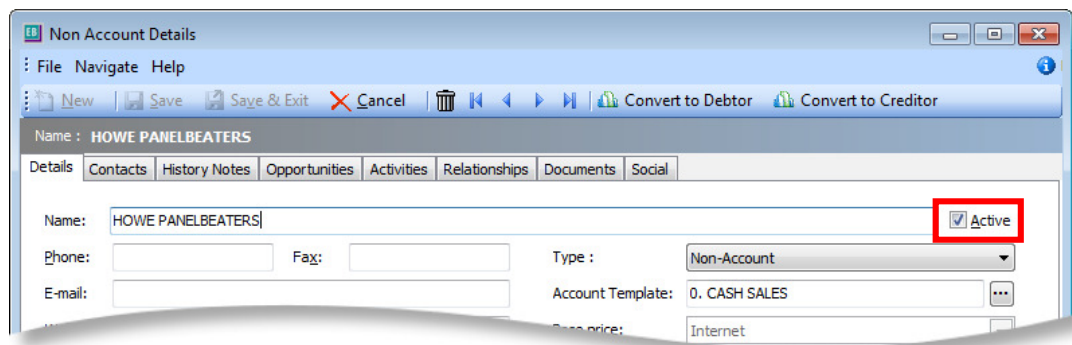
Important Upgrade Notice

The **Exonetlib.dll** DLL has been updated in this release to remove external dependencies and reduce the size of the DLL. When upgrading manually, make sure to install and register the upgraded DLL—its version number should be 2016.1.0 or later.

Updates to Non Accounts

Active Flag

A new **Active** flag is available on the Non Account Details window:



This flag works in the same way as the **Active** flag on Debtor and Creditor accounts; if the flag is unticked, then the account is inactive, and will not appear on search windows.

Restricting the Ability to Convert Non Accounts

A new User-level profile setting is available to control users' ability to convert Non Accounts to Debtors or Creditors. When the **Allow conversion of non-accounts to Debtor or Creditor accounts** setting is unticked, the **Convert to Debtor** and **Convert to Creditor** buttons on the Non Account Details window are disabled. Also, when converting an Opportunity to a Sales Order in EXO CRM, users are not asked if they want to convert the Non Account on the Opportunity to a Debtor.

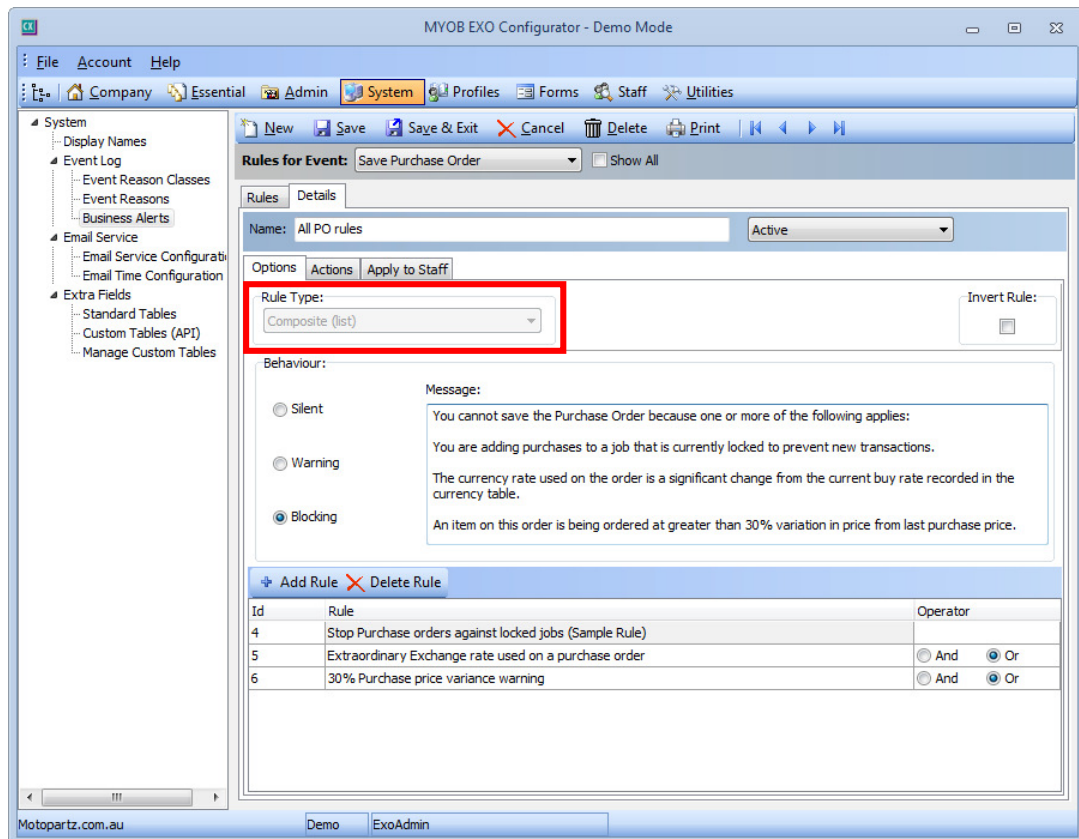
Composite Business Alerts

This release adds the ability to create complex Business Alert rules that reference other rules.

The **Active** checkbox on all rules has been replaced with a dropdown, containing the following options:

- Active – the rule will be applied to the selected event whenever it occurs.
- Inactive – the rule will not be applied.
- Sub Rule – the rule will be applied when it is used as part of a composite rule. If it is not part of a composite rule, it will not be applied.

A new “Composite (list)” type is available in the **Rule Type** dropdown when adding a new Business Alert. If this type is selected, the event conditions are replaced with a table where you can add existing Business Alerts and specify how they should be used together:



Click **Add Rule** to select an existing rule to add to the composite rule. You can select any rule for the same event as the composite rule that has its status set to “Sub Rule”.

The **Operator** column lets you determine whether the selected rules should be evaluated with and AND or and OR condition, e.g. if rules A, B and C are all added with the AND operator, the composite rule will be triggered if all three are triggered; if the

New Features

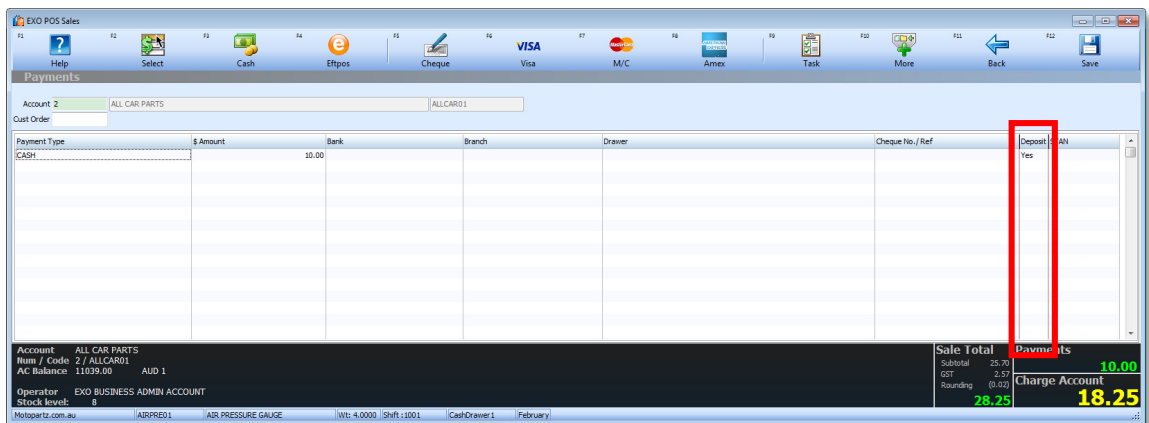
rules are added with an OR operator, the composite rule will be triggered if any one of them is triggered.

Deposits on Sales Orders in EXO POS

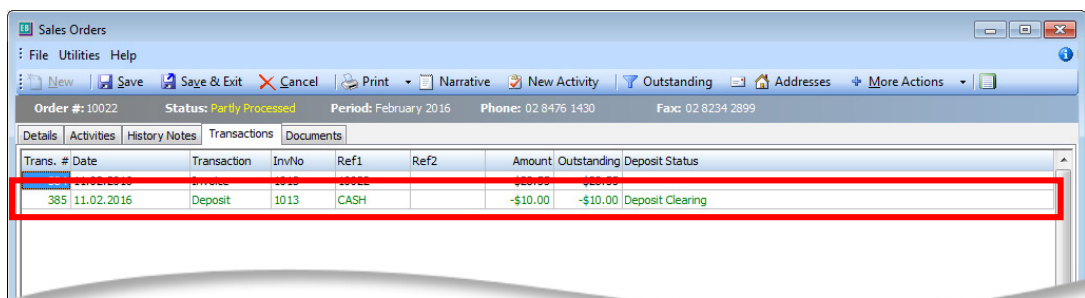
EXO POS now allows deposits to be entered on Sales Orders when using the shopping cart functionality.

Note: The shopping cart is available as part of EXO POS Advantage, which is a separately licensed add-on to EXO POS.

When processing the sale through the shopping cart, if any of the lines are marked as "Order", a new **Deposit** column will be available on the payment screen:

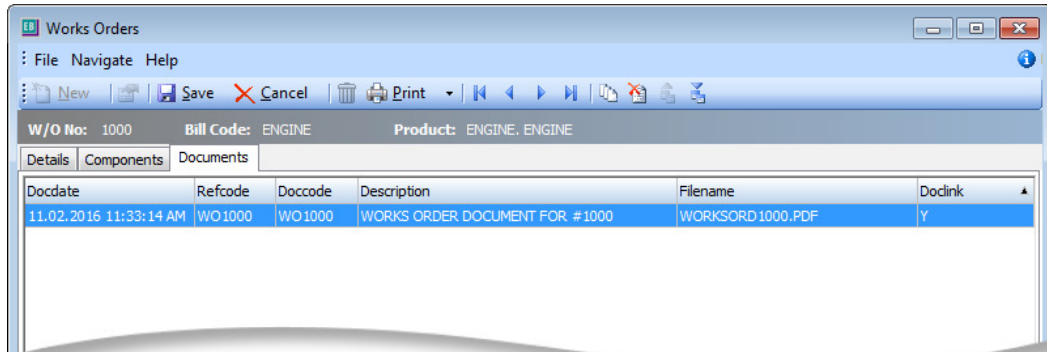


This column can be set to "Yes" to indicate that a payment line is a deposit on the order. When the Sales Order is saved, the payment will be recorded as a deposit:



Documents on Works Orders

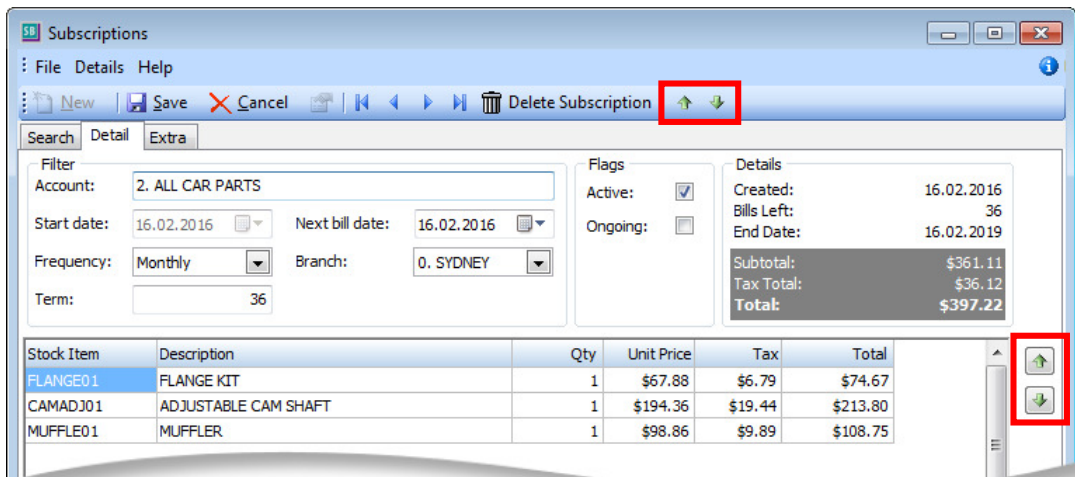
The Works Orders window now has a Documents tab:



This tab behaves in the same way as the Documents tabs that are available on other records. You can add and remove documents using the standard document toolbar buttons, and you can attach a document by dragging and dropping it onto the Documents tab.

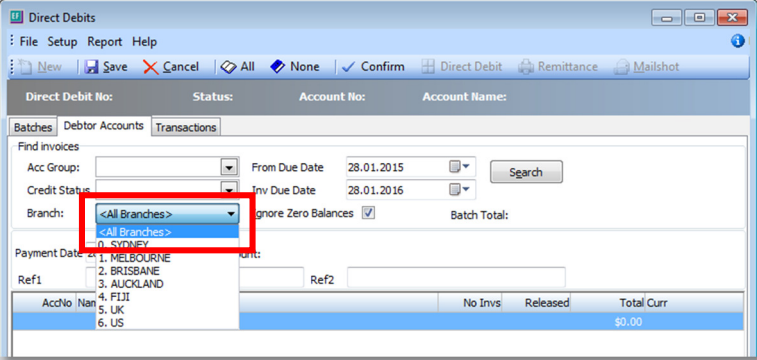
Line Ordering on Subscriptions

It is now possible to control the order of line items on subscriptions. New arrow buttons are available on the Subscriptions window to move line items up or down:



Resolved Issues

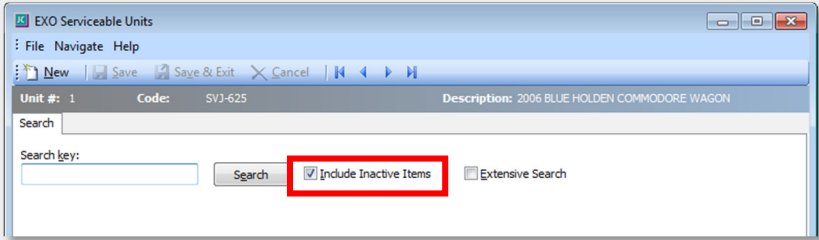
EXO Business Core

Service Request ID	Description
127043737215 126783397985	<i>Originally resolved in EXO Business 2015.5.1</i> The Generate Credit right-click menu option on the Transactions tab of the Debtor Account Details window did not create a stock transaction to put the item back into stock on hand, as it was incorrectly processing it as a credit for a job proforma invoice. This has been resolved.
14412592512 14351984481 14351984573 14351984567 14351984561 14351984549 14351984535 14351984521 14351984497 14351984481 12373995217 125014104018 116264485851 12364823431 11186846746 11220411631 11184069761 127194475338 127194475221	This release adds an “<All Branches>” option to the Branch dropdown on the Direct Debits window: 
11803439395 111939667414 12700864671 11893574491 11799532561 11613472532 11993539759 11965022036 15073330633 111400765381 15005906264	This release addresses issues with the Variable Cost function of Stock items: <ul style="list-style-type: none">• The Variable Cost function was only available in Debtors invoicing and EXO POS; this release adds the function to Sales Orders.• The Variable Cost function did not work for freight lines where freight was a Variable Cost item. This has been resolved.
111689051292 111528117776 117883964111 121130678591 126631146848 126631146861 126631146888 126631146912 126631146833 126631146874 126631146925	The mailshot function on the Invoice Batch Printing window did not use the invoice form file logic; it always used Invoice.clf , instead of Invoice1.clf , Invoice2.clf , etc. as appropriate. This has been resolved.
114492956835 114472037891 114472037904 114472037917 114472037929 114472037941 114472037953 114472037965 114472037977 114472037989 114472038001	When a .SAM report was saved from the Sales Analysis Designer, if the report included an In List filter of string values, extra quote marks were added around the values, which meant that the report returned no data when run. This has been resolved.

Resolved Issues

11986061645 11285627030 11285627110 11944007881 12232347031 12995696679 114995966216 114810018764	The Inwards Goods Costing window did not update the Sup Price column when a discount was applied. This has been resolved.
14719339707 14428321001 11573886228 11561970537	On the Transactions tab of the Stock Item Details window, right-clicking on a transaction and selecting View Source Transaction did nothing if the transaction was a Works Order transaction. This has been resolved.
114995966216 114810018764	This release adds the ability to show a Sup Price FOREX amount in the summary bar at the bottom of the Inwards Goods Costing window.
18462630037 16749762871	When performing a bank reconciliation, the prompt for allocations only appeared when processing a refund. This has been resolved; the prompt now appears for positive and negative transactions.
127869146136 128305558701 127733788861	When using the Integrated Cashbook in a company that uses foreign currencies, the GST rate column was mislabelled Ex Rate . This has been resolved.
-	When checking for pending applications in Bank Feeds, the error "Unable to load bank feed data due to invalid login information. Unauthorized to access this Bank Feed error 404." always appeared if there were no applications pending. (The error did not occur once an application had been entered.) This has been resolved.
-	Negative stock checks on Sales Orders ignored the location(s) on order lines and only used the header location, which could result in incorrect negative stock warnings if the locations differed. This has been resolved.
-	Some of the error messages that can appear on the Sales Orders windows have been re-worded to make them more descriptive of the problem that triggers them.
-	When entering a Creditors Invoice, if the selected Creditor account has its Default Invoice Mode set to "GL" and a default GL code specified, then the GL code would be automatically populated on the Creditor Invoice Entry window. In previous versions, this auto-population would occur for the first line on the invoice only; as of this release, the default GL code is now populated automatically for all lines added to a Creditor Invoice.
-	When creating transactions in the Integrated Cashbook, if the Enforce transaction period dates during invoice entry profile setting was set to "Do not Enforce", transactions with a date outside the range of the selected period would have their period changed to a period within the specified date range, i.e. the system behaved as though the profile setting was set to "AutoEnforce". As this happened after any validation had taken place, it was possible to post a transaction to a locked period. This has been resolved.

EXO Job Costing

Service Request ID	Description
<p>12138661472 12137672912 12352737621 17475755241 16933645116 12676494441 111821902431 114730137754 127150997184 13721546961</p>	<p>The Serviceable Units search window now includes an option to exclude inactive units:</p> 
<p>18848223214 111741361184 17993841101</p>	<p>When the Prevent processing to negative stock levels profile setting was enabled, negative stock checks on jobs only looked at individual lines, and not the job as a whole, which resulted in incorrect negative stock warnings in cases where stock items were added and removed and the net effect was positive stock. This has been resolved.</p>
<p>120687070584 119869557601</p>	<p>Converting stock items to a serialised output item in Job Costing generated the error "Error ExistingSNQuery: Duplicate index name 'Filters'". This has been resolved.</p>

EXO Intercompany

Service Request ID	Description
<p>112400868583 124254367911 122185905031 112389940631 15467655461</p>	<p>If a GL journal transaction from the previous financial year is entered into an EXO Intercompany source database, and this transaction affects the profit or loss for that year, then the previous year's profit figure (retained earnings) in the balance sheet needs to be adjusted by that amount.</p> <p>When this transaction gets replicated to the consolidation database, it is inserted into the period corresponding to the transaction date (the financial year may be different in the consolidation database). If, when this transaction is inserted, it corresponds to a prior year, it too needs to create a retained earnings adjustment in that database; however, in previous versions, the system did not do this. This has been resolved; retained earnings adjustments are now created as they should be.</p>
<p>18040257672 122023603501 17825794241</p>	<p>In some cases, Creditors invoice suspended batches in a source database were entered into an incorrect period in the consolidated database. This has been resolved.</p>

EXO CRM

Service Request ID	Description
11782247028 17965243131 12983805061 11770969611	This release adds the ability to restrict users' access to the Convert to Debtor or Convert to Creditor buttons on the Non Accounts window—see page 18.

Known Issues

The following issues have been identified as requiring end-user attention in this release.

Installation/Upgrade Issues

- If you are using the MYOB EXO Business Installation Wizard to install an instance of SQL Express, the following must be present on the PC:
 - .NET Framework 3.5 SP1 – you can download this from:
<http://go.microsoft.com/fwlink/?LinkId=120550>
 - Windows Installer 4.5 – you can download this from:
<http://go.microsoft.com/fwlink/?LinkId=123422>
 - Windows PowerShell 1.0 – you can download this from:
<http://go.microsoft.com/fwlink/?LinkId=120552>
- Due to security settings imposed by Windows, CHM Help files cannot be viewed from a remote location—this means that you can only view the EXO Business CHM Help files if they have been installed on the local PC. See [Microsoft Knowledge Base article 892675](#) for more information on this issue and suggested workarounds. (This issue does not apply if you are viewing online Help files on the EXO Business Education Centre.)

Demo Data Issues

The stored procedure SP_DEMO_DATA_DATE_UPDATER, which updates the data in demo databases to the current date, was updated in EXO Business 8.4. This stored procedure is only available in the EXO_DEMO database, which means that any existing demonstration databases used by partners will not be able roll their demo data forward; these databases will need to be re-created based on the updated EXO_DEMO database in order to use the updated SP_DEMO_DATA_DATE_UPDATER procedure.

Job Costing Resource Issues

When a resource allocation is created, an Activity for the relevant staff member is automatically created in the EXO Business system; however, if the resource is not associated with a staff member, the Activity will not appear on the Activity Search widget on the Task Scheduler tab.

As a workaround, a dummy staff account can be created to associate non-staff Resources with.

SQL Server 2012 Issues

All versions of SQL server 2012 exhibited a subtle, but now well-known change in default behaviour with regard to identity or auto number sequences. In MYOB EXO Business, this would be experienced as an unexpected anomaly where number sequences could apparently spontaneously jump by increments of 1000 if the SQL server was restarted.

This behaviour was reversed in SQL server 2014, but no known solution exists for completely preventing this behaviour in any versions of SQL server 2012, other than to upgrade to SQL server 2014 to completely eliminate the potential for this issue to occur.

SQL Server 2008 R2 prior to SP3

MYOB EXO Business uses a SQL Server feature called Common Language Runtime Integration. This feature was disabled by default in versions of SQL Server 2008 R2 prior to Service Pack 3. If this feature is not enabled, users may encounter the following error during the upgrade process:

Updating server configuration: 'clr enabled'

Appendix 1: Profile Settings

The following profile settings have been added or modified in this release.

Name	Profile Name	Level	Description	Default	Refer
Allow conversion of non-accounts to Debtor or Creditor accounts	CRM_CANCONVERT_PROSPECTS	User	If this setting is disabled, users will not be able to convert Non Accounts to Debtors or Creditors.	Enabled	page 18