

LESSON IDEA

Color harmony

ART & DESIGN



Learn with
Procreate®



Lesson ideas

Use these Lesson Ideas to spark your imagination for using Procreate in the classroom. Feel free to take them further and make them your own.

Color Harmony

In this lesson students use Procreate's Color Harmony tools to learn the fundamentals of Color Theory and build palettes that create different moods and atmospheres.

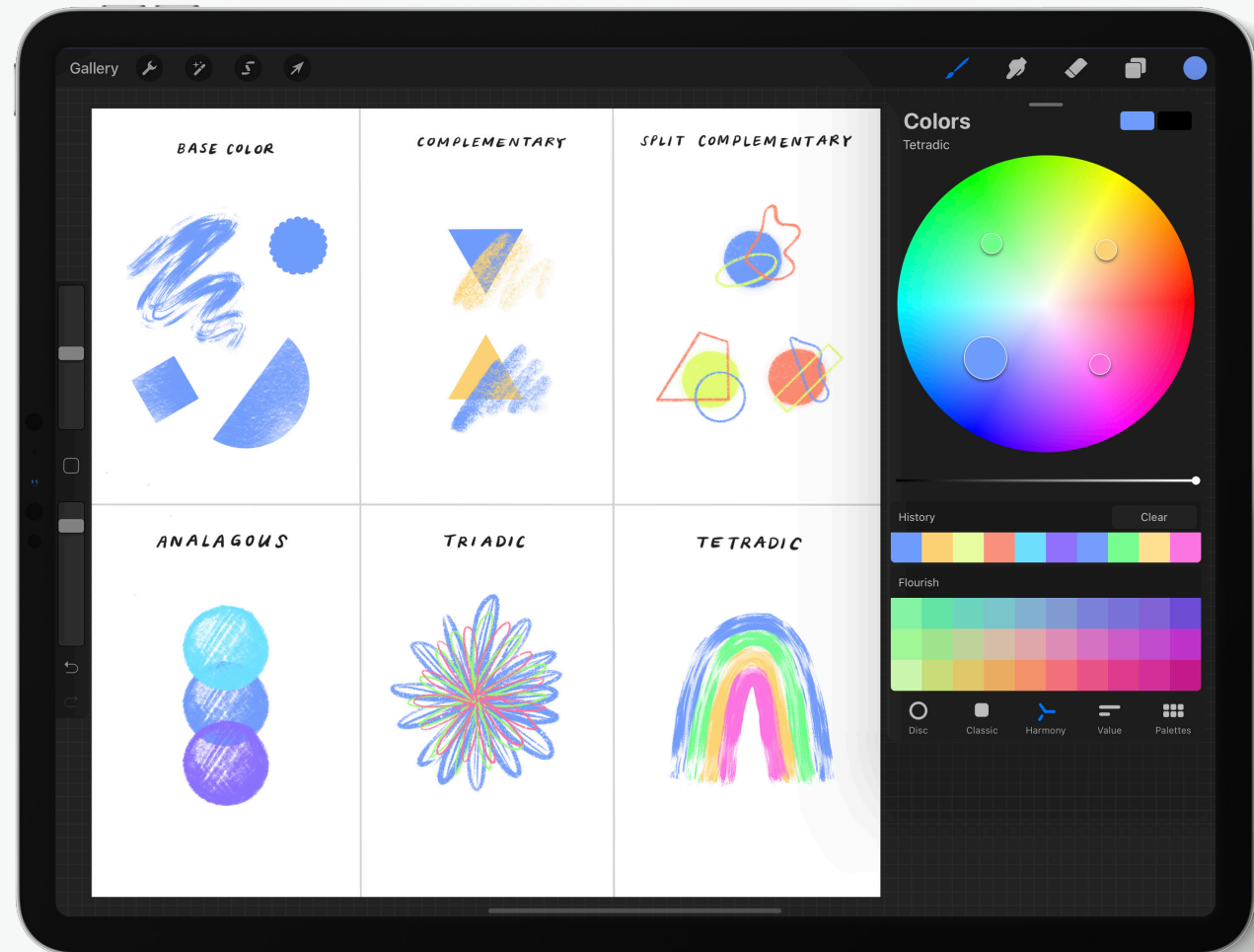
All you need is an iPad and the following apps:



Procreate

Educational Value

- ✓ Students will understand how Color Theory defines relationships between colors and establish relevant vocabulary.
- ✓ Students will learn to closely observe and compare colors, and use Color Theory to choose colors that match any hue.
- ✓ Students will use digital technologies to build a harmonious color palette.



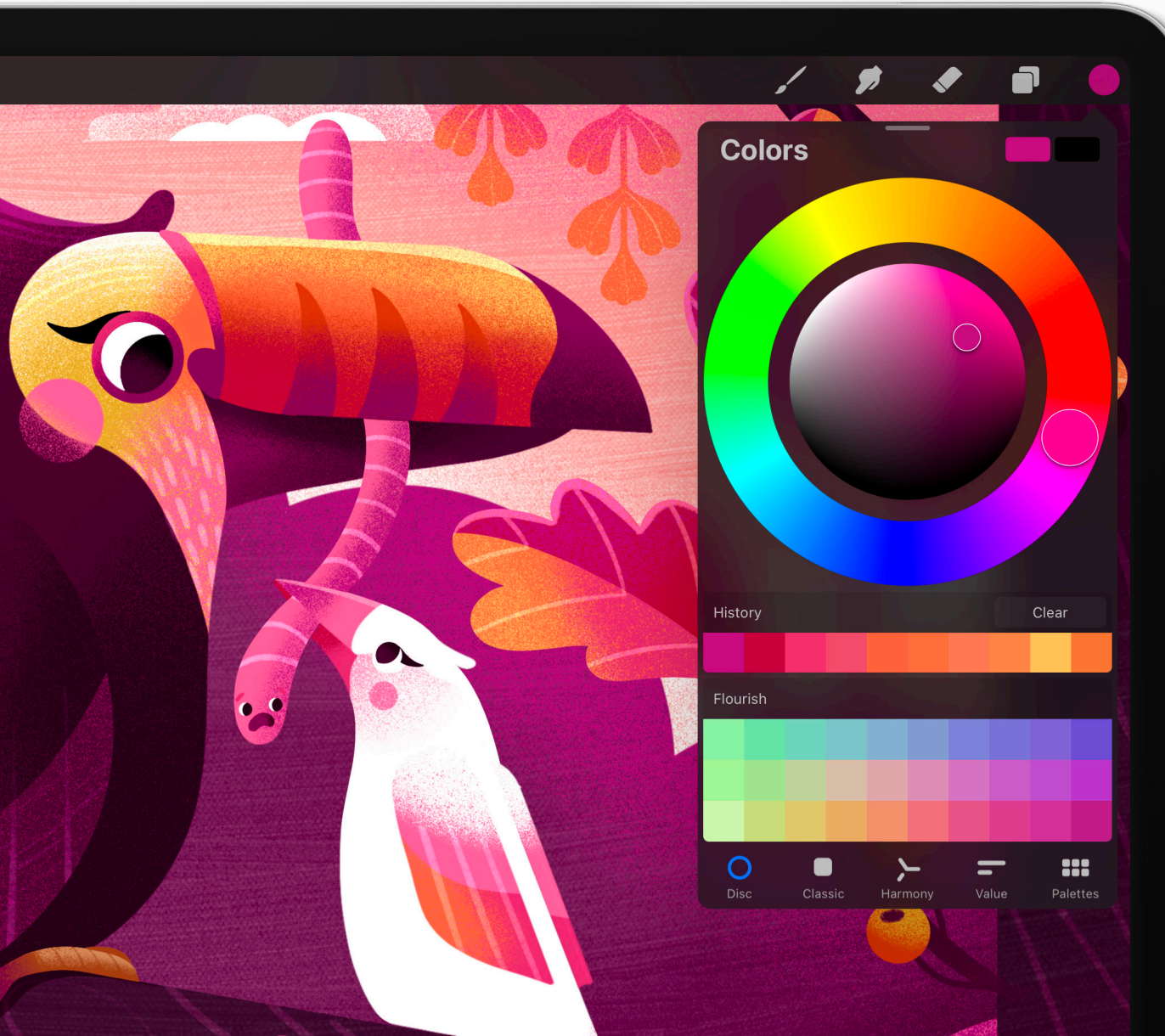
In this guide

2	The Color Panel
3	Color Harmony
4	Exploring Colorways
11	Build a palette
14	Create an artwork
15	Take it further

The Color Panel

2.

ACTIVE COLOR



Millions of colors

When creating art digitally you have instant access to millions of colors.

The *Color Panel* is where you choose, modify and save colors.

Tap the active color to open and explore the *Color Panel*.

← COLOR DISC

← COLOR HISTORY

← DEFAULT PALETTE

← PANEL OPTIONS

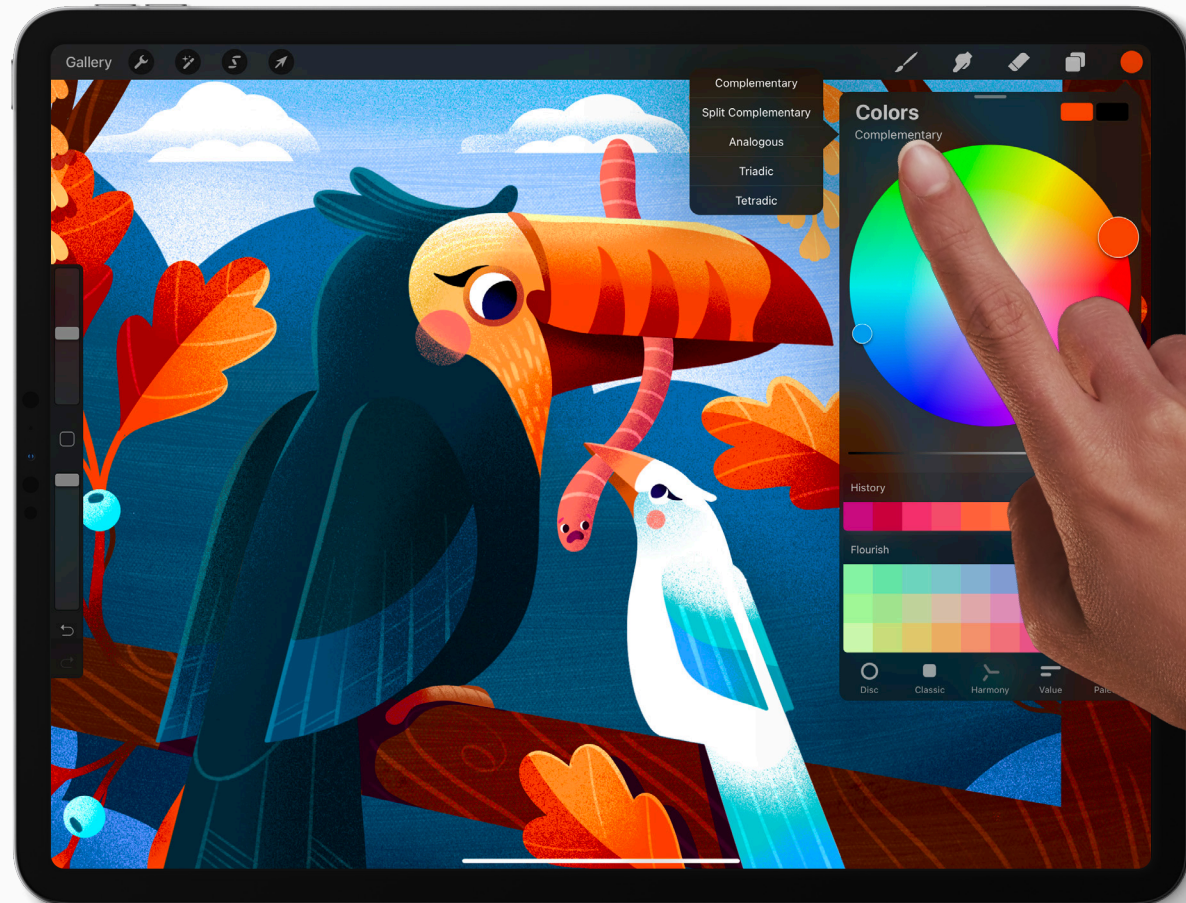
Color Harmony

3.

Harmony options

Harmony builds instant color schemes based on your color choices using color theory. These can be Complementary, Split Complementary, Analogous, Triadic, or Tetradic.

- 1 Tap *Harmony* at the bottom of the *Color Panel* to open the Color Harmony tab
- 2 At the top left of the Harmony interface, you'll see the word *Complementary*. This is the default Harmony mode. Tap on *Complementary* to see the full list of five different Color Harmony modes.

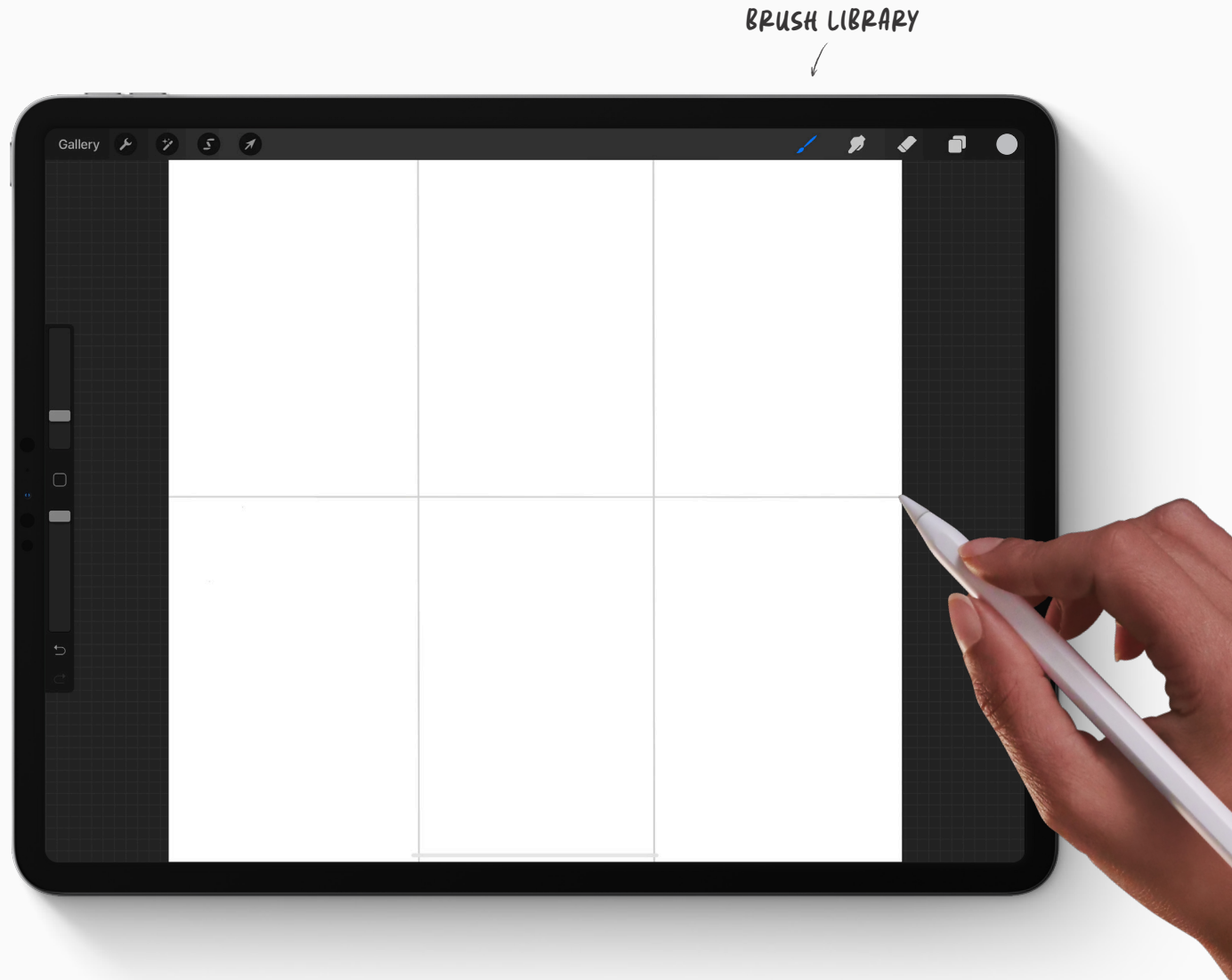


Exploring Colorways

4.

Getting started

- 1 In your Gallery, tap the + icon to create a new canvas.
- 2 Select *Square*.
- 3 Then select a small brush from the *Brush Library*, and divide your canvas into six sections.



Pick a base color

Use the *Color Disc* to select a color to build the rest of your color schemes from.

This can be any color you like, or you might like to choose a base color with a specific artwork in mind.

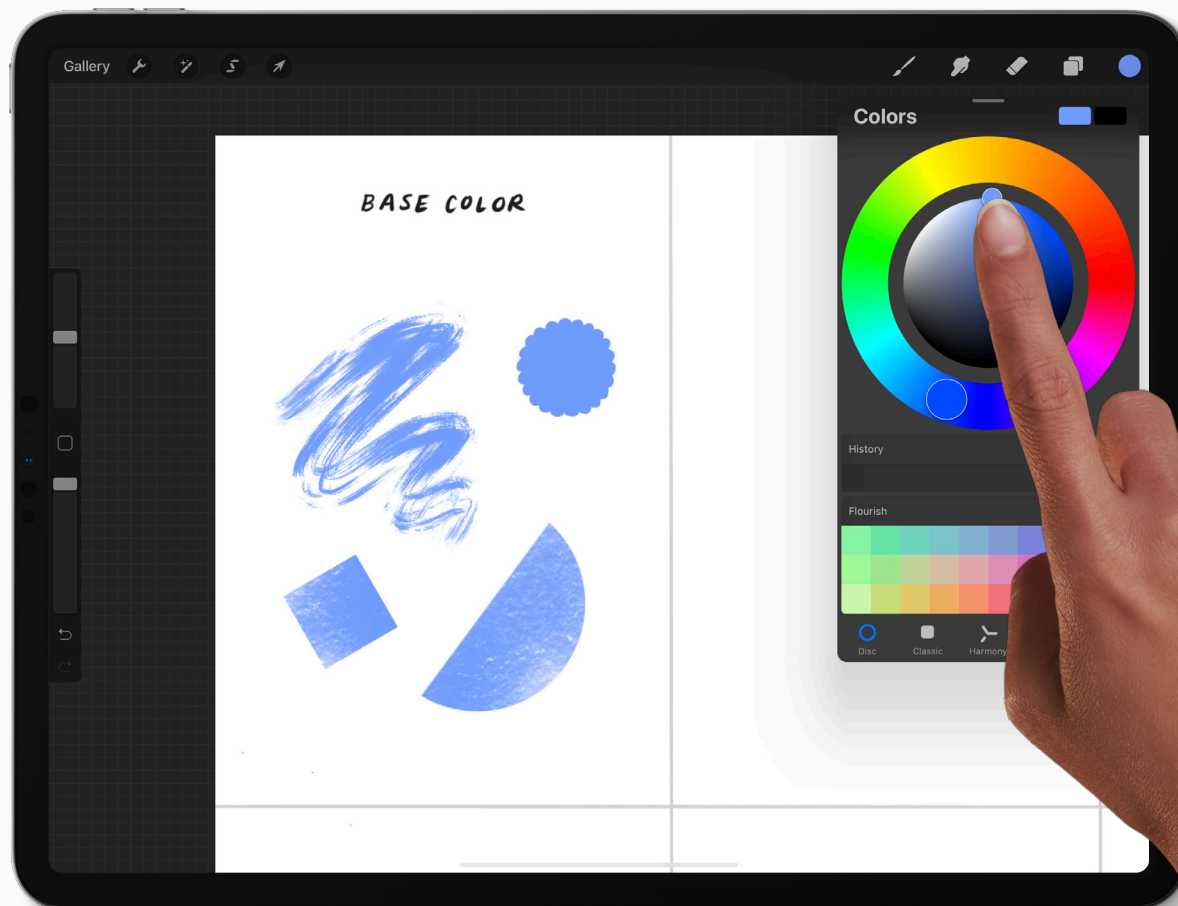
USING THE COLOR DISC

The *Color Disc* consists of an outer *Hue ring* around an inner *Saturation disc*.

Each contains a reticle: a clear circle you can slide around to set your chosen color. First choose your base color with the *Hue ring*. Then adjust how light, dark, or saturated it appears using the *Saturation disc*.

EXPERIMENTATION IS KEY

Experiment with making a few different kinds of marks in this color in the first section of your canvas. Try and get a sense of how the color feels with different brushes and pressure.



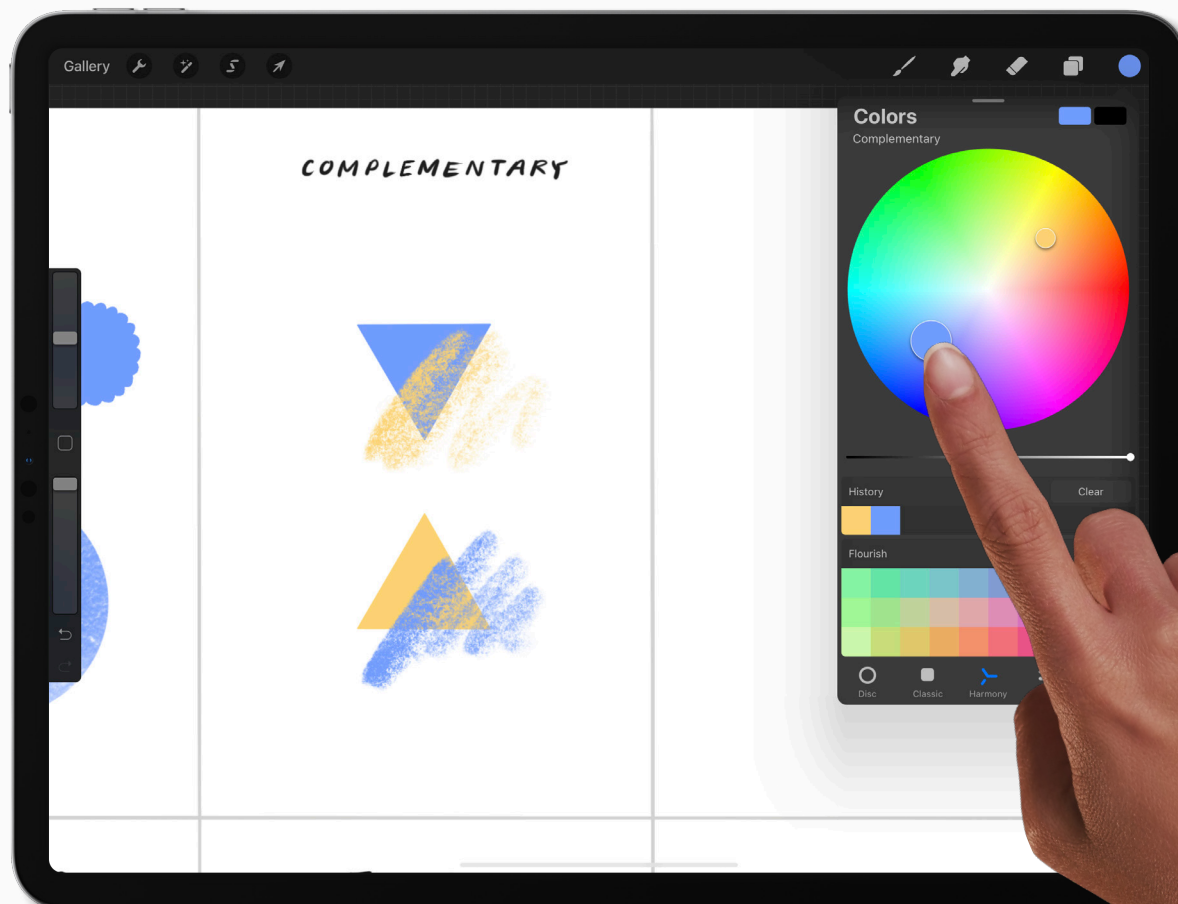
Complementary

Tap *Harmony* to explore the complementary color to your base color. You'll see two colors are highlighted in opposite positions on the color wheel.

Experiment with these colors on the next section of your canvas. Again, try different brushes and blending the colors together to see what effects you can achieve.

HOW DO COMPLEMENTARY COLORS WORK?

Because they are exact opposites, complementaries can make each other appear brighter. One will always be a cool color, and the other will always be warm. Together, they create the highest possible contrast on the color wheel.



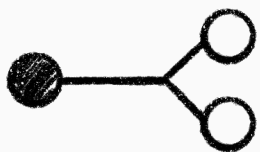
Split Complementary

Tap *Complementary* to open Harmony options and select *Split Complementary*. Here you'll see three colors highlighted in a sharp triangle formation.

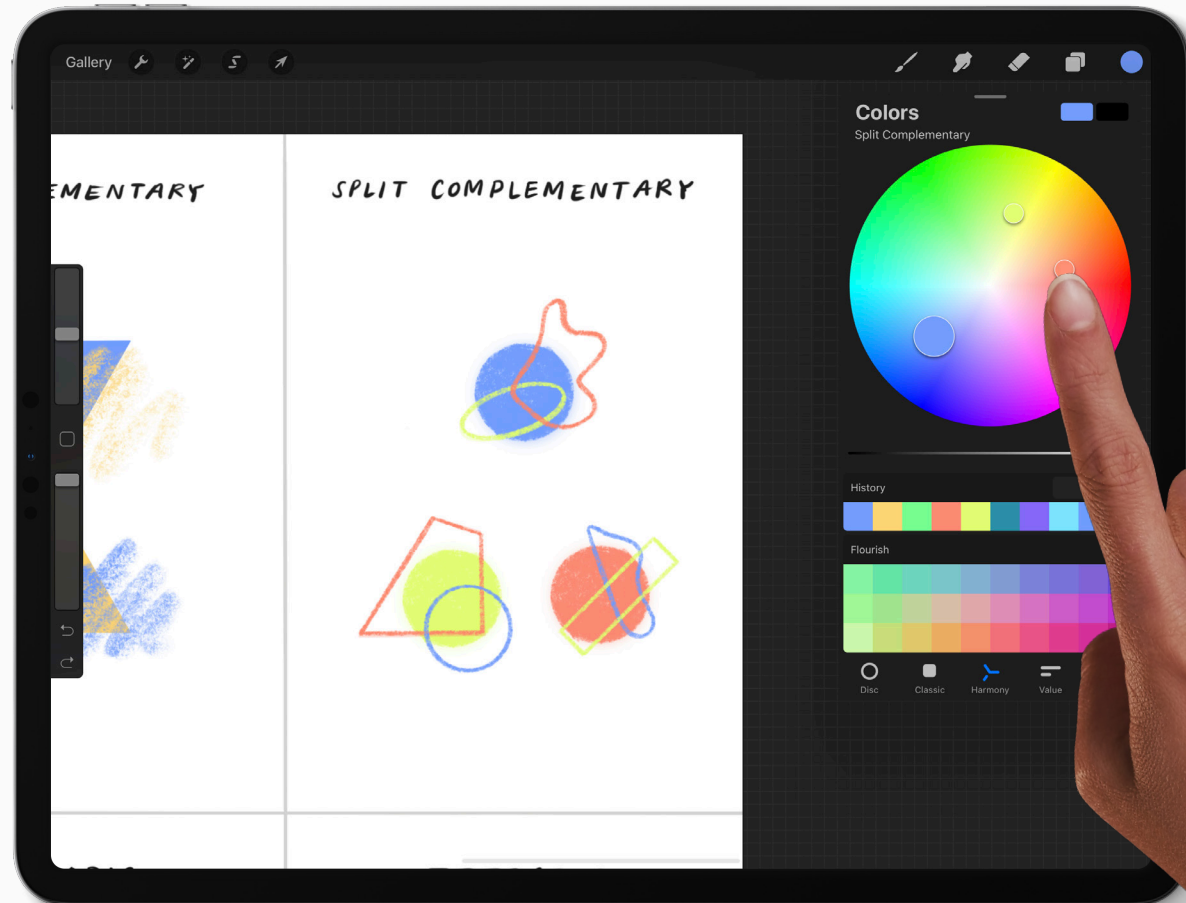
Again experiment with the colors in the next section of your canvas, and see what kind of mood they create.

HOW DO SPLIT COMPLEMENTARY COLORS WORK?

Split complementary schemes use a base color and two secondary colors placed symmetrically on the color wheel. This gives you a combination of one warm and two cool colors, or vice versa. Unlike the complementary color, split complementary schemes are often more balanced and easier on the eyes. Generally the color at the 'sharp' end of the triangle is the main shade. The two secondary colors work as highlight and accent colors.



NARROW
TRIANGLE



Analogous

Next open Harmony options again and select *Analagous*. This will highlight the two neighboring colors of your base color, in one area of the color wheel.

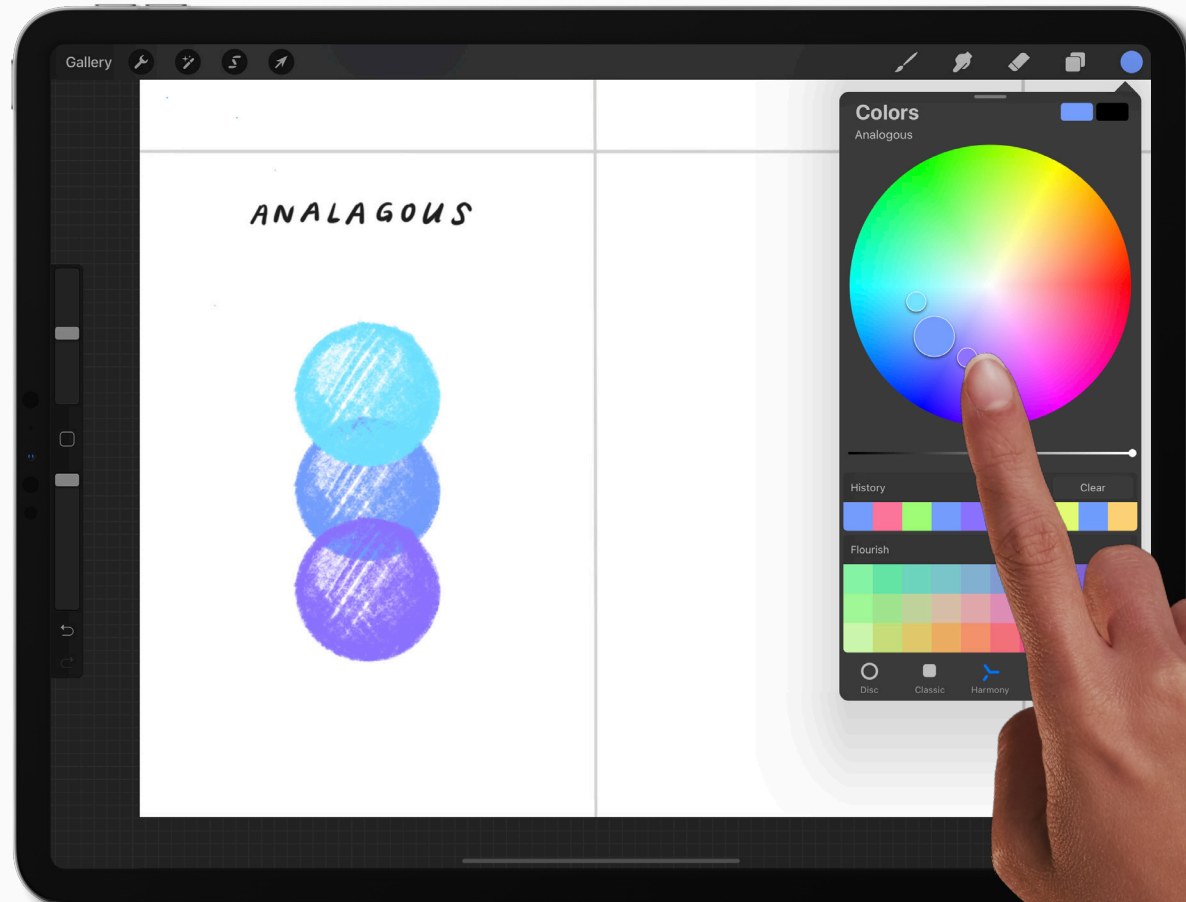
Have another play in the next section of your canvas and see how it feels having three similar colors together.

HOW DO ANALOGOUS COLORS WORK?

This scheme uses one base color and two secondary colors, like Split Complementary. The base color is best used as the main shade in the artwork. The secondaries are reserved for highlights and accents. Because the three shades of analogous color are positioned so close together, the result is uniformly warm or cold. This creates an elegant and clear color scheme without any tension in the palette.



HEY NEIGHBOR!



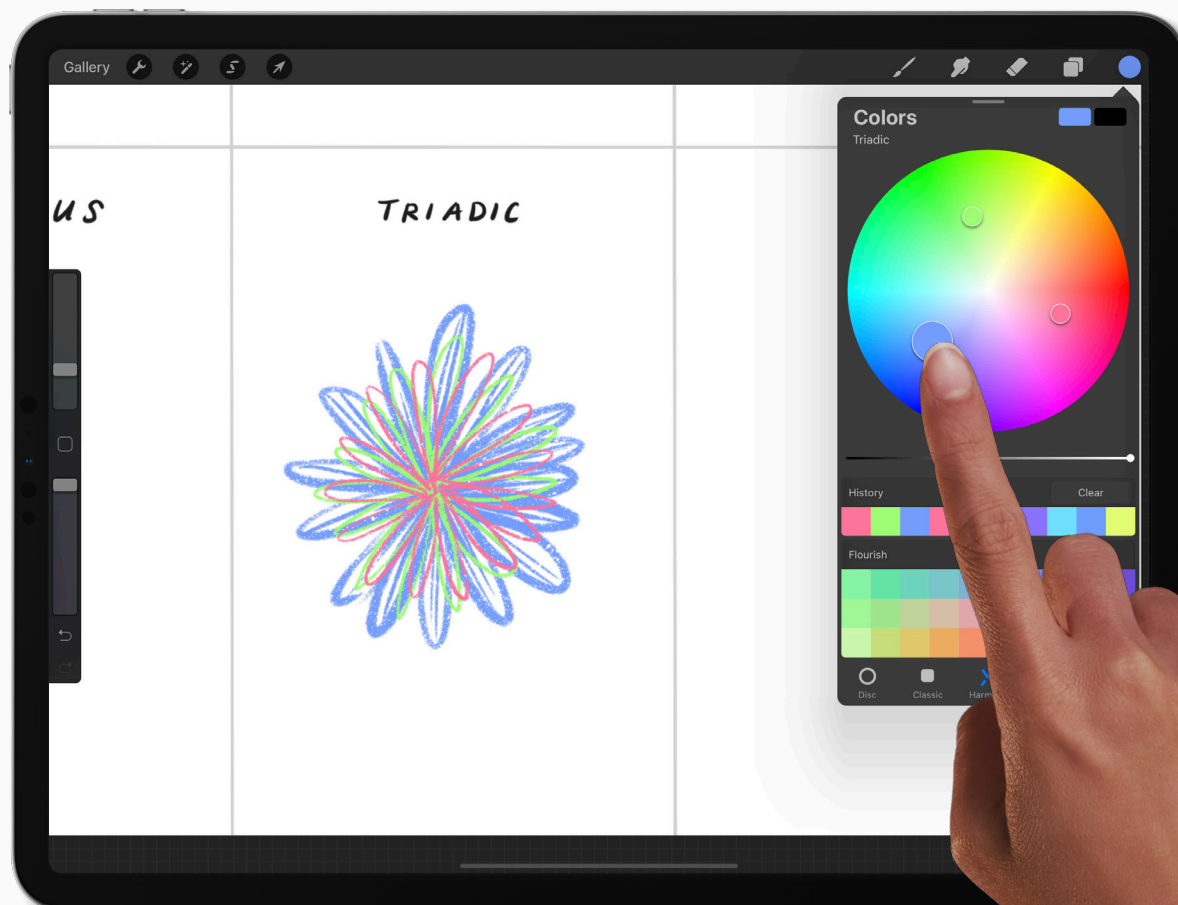
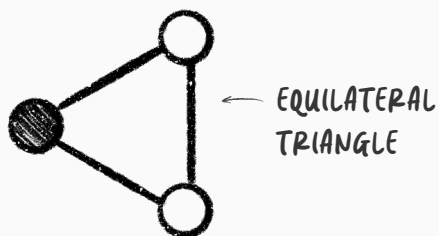
Triadic

Now let's select the Triadic scheme from the Harmony list and have a play on your canvas. Notice that three colors are highlighted in an equilateral triangle formation on the color wheel.

How does this color scheme feel compared to the Analogous one?

HOW DO TRIADIC COLORS WORK?

This variant of the split complementary color scheme puts equal distance between all three colors. The result is a trio of colors that are equally dominant. This makes for a vibrant and punchy result which should be carefully balanced in artwork.

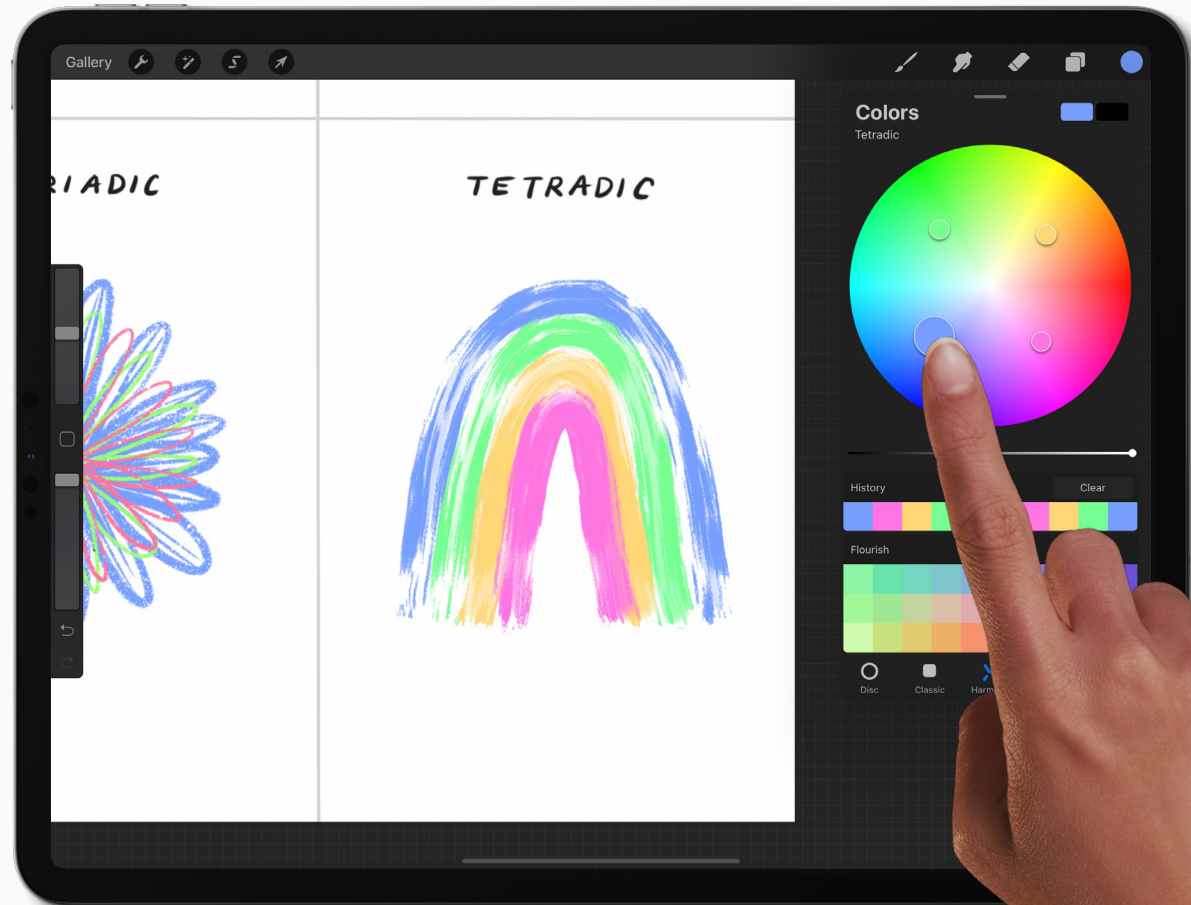
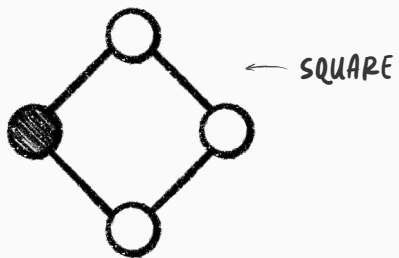


Tetradic

Lastly, choose Tetradic from the Harmony options, and create a quick illustration using the four highlighted colors. These colors will be from opposite corners of the color wheel.

HOW DO TETRADIC COLORS WORK?

Like the Triadic scheme, the Tetrad places equal distance between all the colors chosen. This results in no clear dominance of one color over another. The results are vibrant and colorful. These shades can be aggressive in combination, so careful planning and a sensitive approach work to get the best visual outcome.



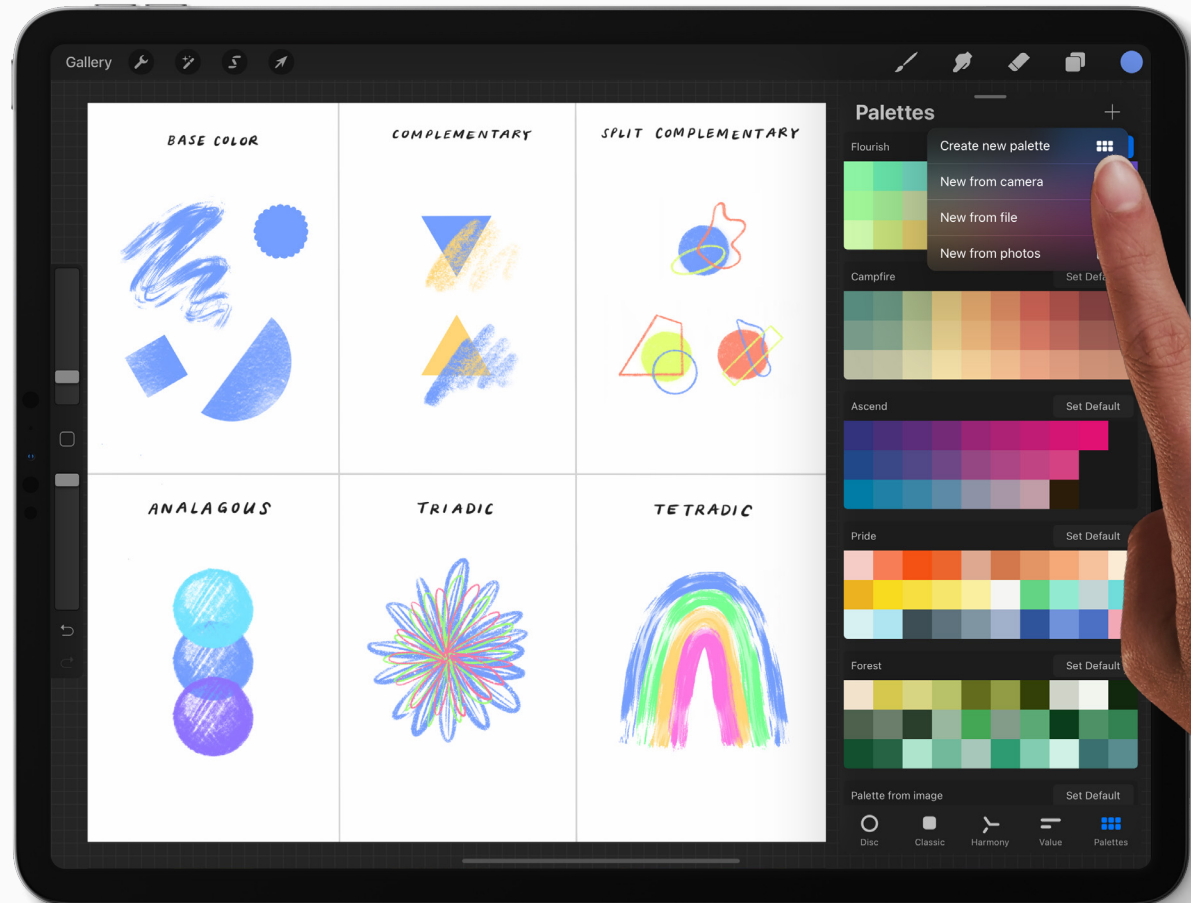
Build a palette

11.

Enter Palette mode

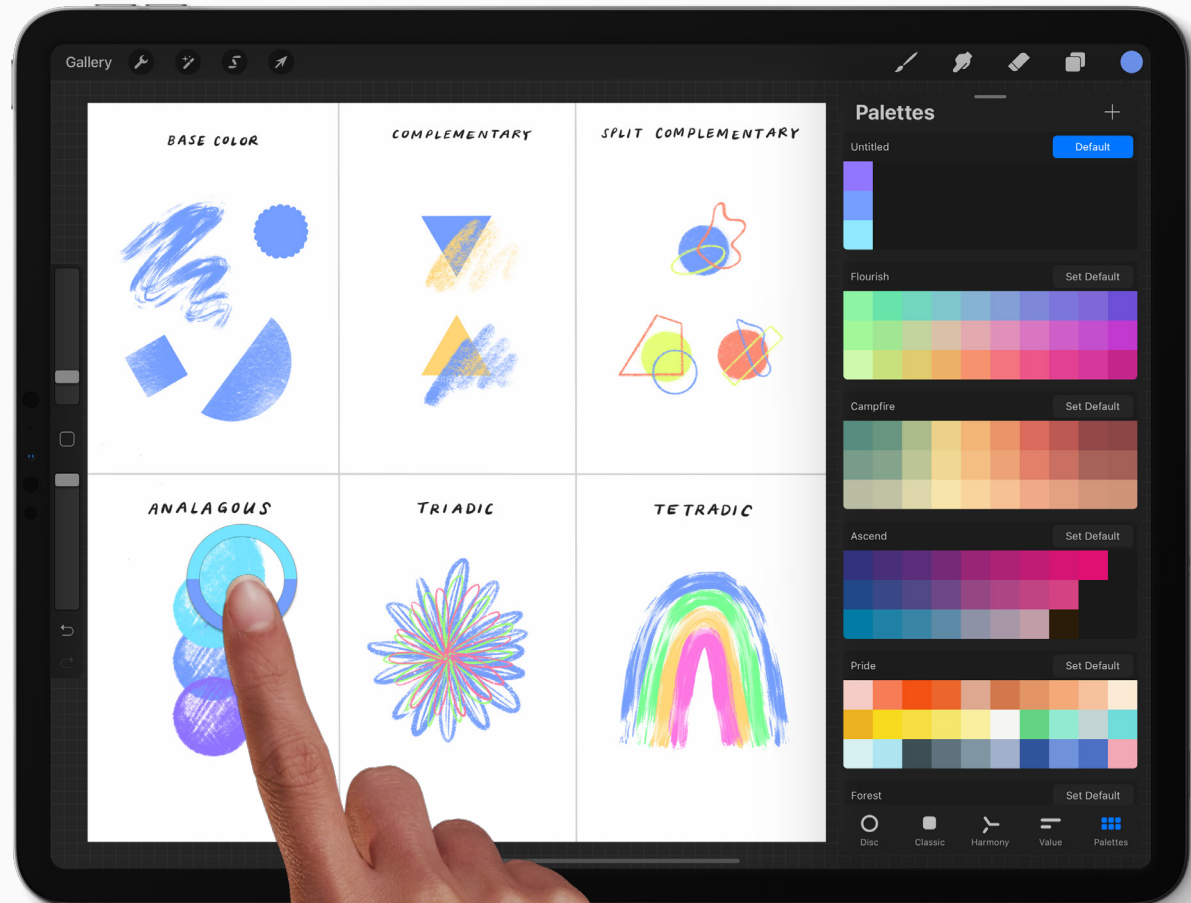
Now that you've explored a range of colors, choose your favorites to add to a new harmonious palette.

- 1 Tap Palettes to swap to Palettes mode.
- 2 Tap the + icon in the top right, and tap *Create new palette*. This will become your active palette.



Add new swatches

- 1 Use the eyedropper to select a color, holding your finger on any part of your canvas to choose the color that is there.
- 2 Then tap any blank square in your palette to add your active color to it. Holding any color in your palette will give you the option to delete if you add one there by accident.
- 3 Continue this process, adding the colors from your chosen harmony scheme into your palette.



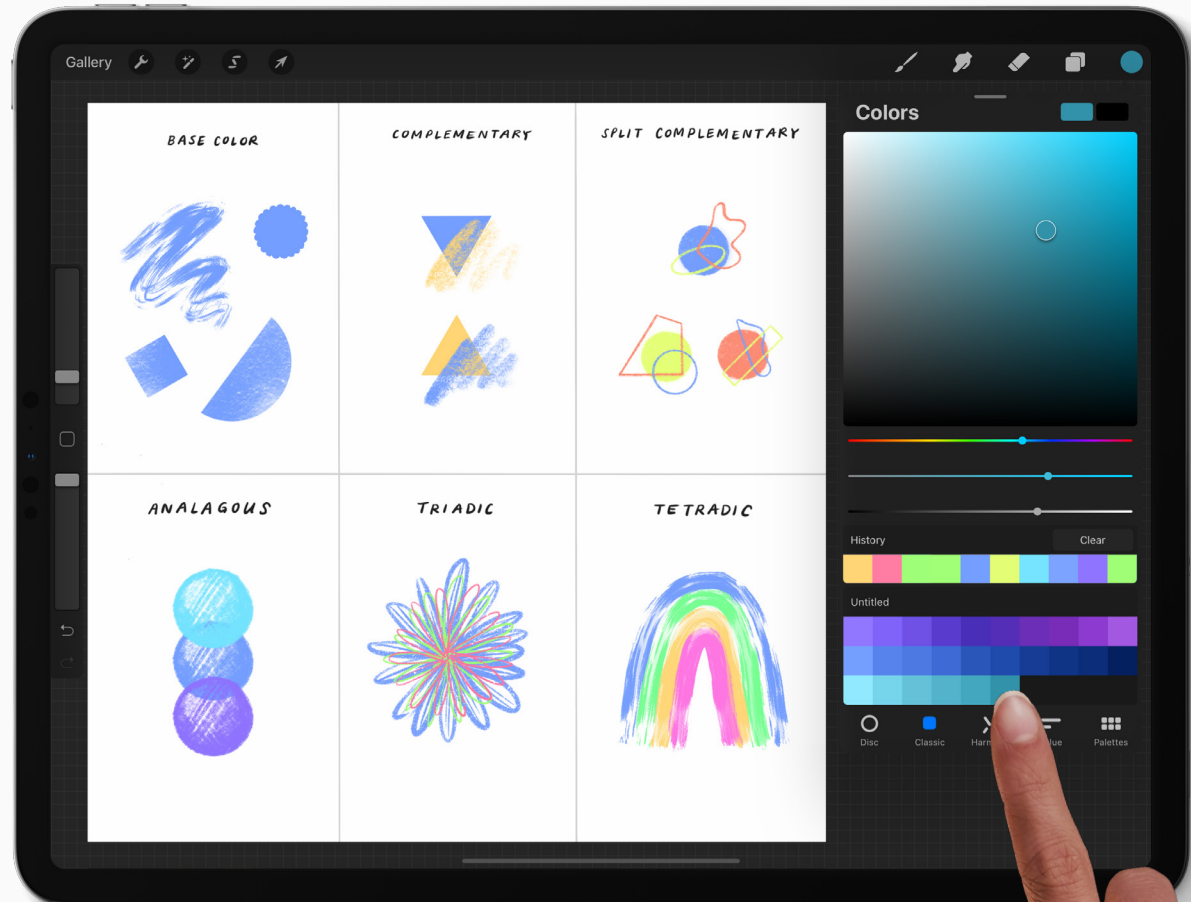
Explore new values

Tap Classic from the Color Panel options at the bottom to enter the Classic tab.

You can see that there are three sliders:

- * H = Hue
- * S = Saturation (Color Intensity)
- * B = Brightness

Select one of your swatches from the palette to set the hue range, and use the brightness and saturation sliders to create higher contrast values for your palette.



Create an artwork

14.

Thinking in color

Now you've created a full and harmonious palette, you can apply it to any artwork, or keep it to use in projects in the future.

COLOR IN ART

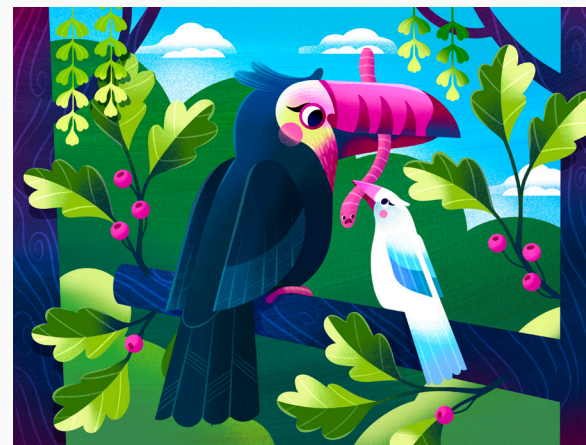
- ✳ When applying color to an artwork, consider how the different palettes and harmony schemes create different moods. See these examples by illustrator [Rebecca Mills](#). How do the different colorways change the feeling of the piece?
- ✳ Color choice doesn't always have to reflect how we see color in the world around us. There's no reason you can't draw a bright blue sun, green zebra, or pink toucan – if it makes sense in the context of your artwork.



ANALOGOUS



COMPLEMENTARY



TRIADIC

Take it further

15.

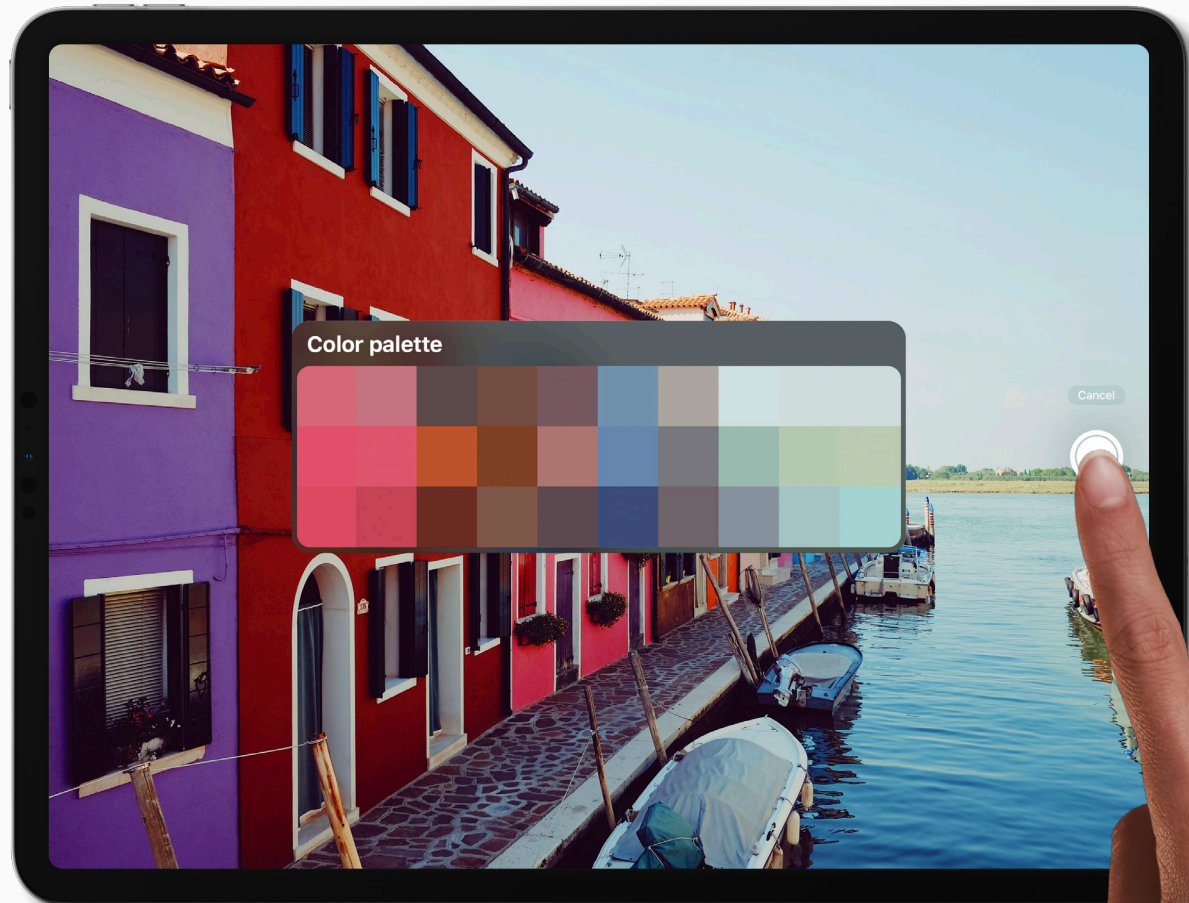
Palette Capture

Another fast and fun way to create beautiful color palettes is by using *Palette Capture*.

Tap on the + symbol in the top right hand corner of Palettes and select *New from Camera*. You will see whatever your camera is pointed at plus a palette of swatches located in the middle of your screen. Use the camera shutter to add the palette to your collection.

Sharing with your friends

Once you've created your palettes, you can export and share with your classmates. Swipe to the left on your palette, and tap *Share*.



Create

Artistic expression helps make education meaningful, memorable and fun. Find more creative lesson ideas at education.procreate.art

To dive deeper into the full creative potential of Procreate, see our Handbook at procreate.art/handbook



Learn with
Procreate®