

LESSON IDEA

# Paint the town

ART & DESIGN

HUMANITIES



Learn with  
**Procreate®**



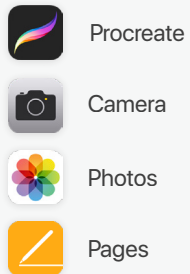
# Lesson ideas

Use these Lesson Ideas to spark your imagination for using Procreate in the classroom. Feel free to take them further and make them your own.

# Paint the town

Public artworks reflect the values of our societies and add meaning and beauty to community spaces. Put this in the hands of students, and see what they create.

All you need is an iPad and the following apps:



## Educational Value

- ✓ Students reflect on the influence of social connectedness and community identity on the liveability of place.
- ✓ Students conceptualise and develop representations of themes or concepts to experiment with their personal style.
- ✓ Students explore the social and political roles of art in public places.



# In this guide

1	The perfect location
3	Discussion
4	Your message
5	Design your mural
7	Create your artwork
13	Take it further



# The perfect location

1.

## Explore your community

Spend some time exploring your neighborhood or school, photographing surfaces that are empty or neglected. Take pictures from different angles, and consider the audience's viewpoint.



Camera

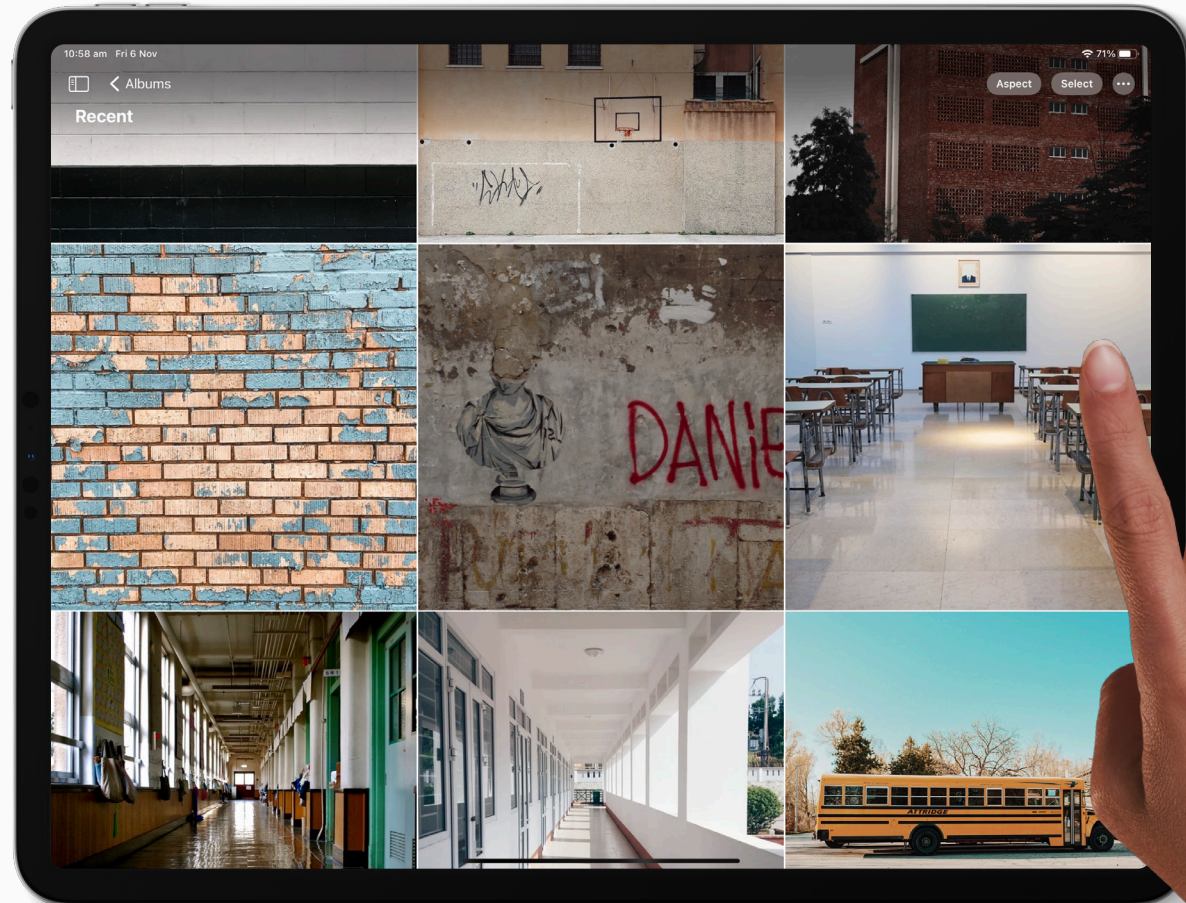


## Choose your space

Look back through your selection of photos, and choose a location for your public artwork.

### CONSIDER...

- \* Will people see your location from a car driving past, or on foot?
- \* Can people walk up close to your surface, or do they have to view it from far away?
- \* What kind of people are the audience for your mural? Do you want to talk to students in your school, or the general public?



# Why do we have art in public spaces? Discuss.

- ✕ What art have you seen in public spaces?  
How did it make you feel?
- ✱ What are the benefits of having art that's accessible to everyone?
- ✱ How does an artworks location change it's meaning?



# Your message

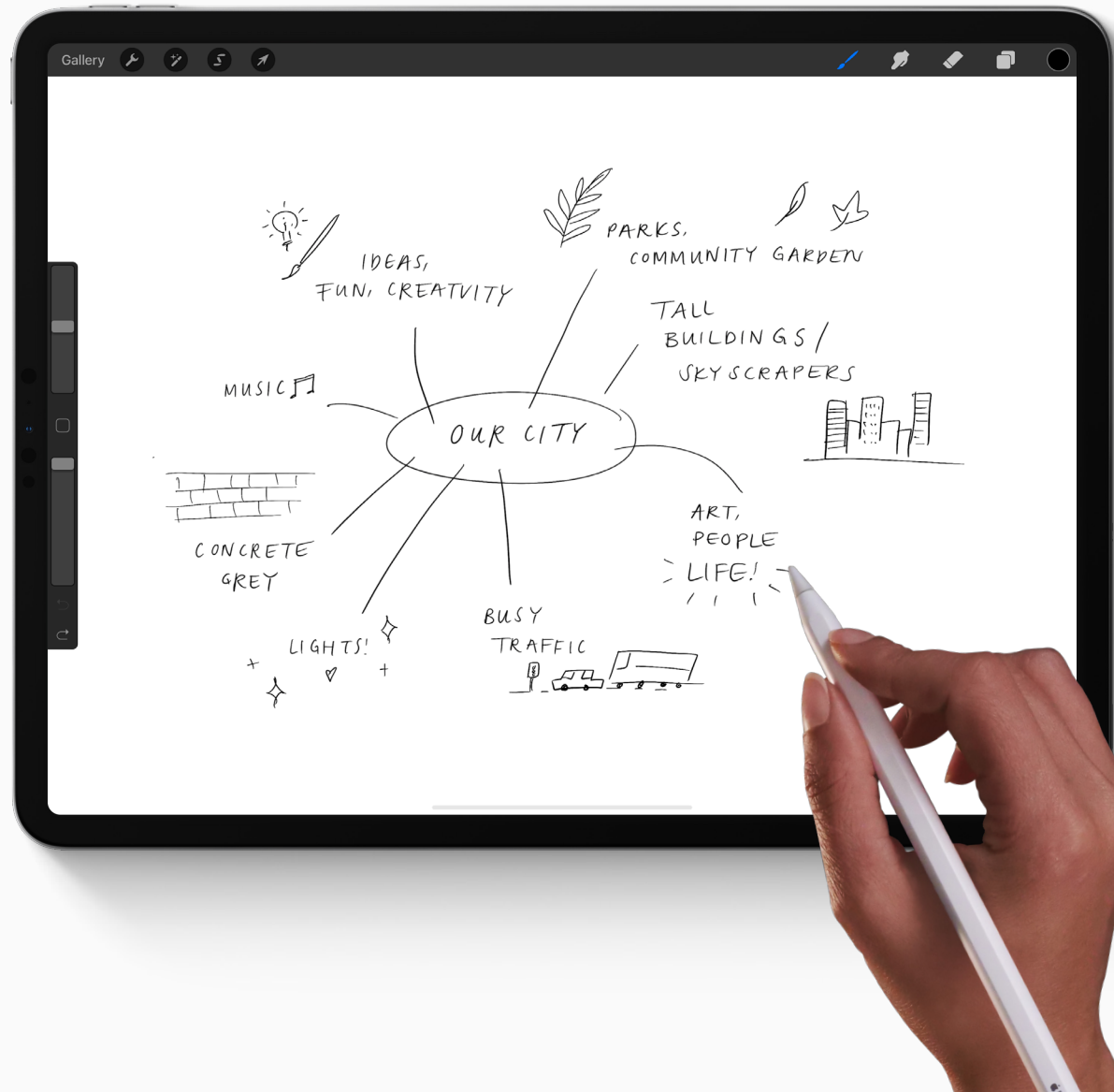
4.

## The story of your place

Spend some time brainstorming the content of your mural. There might be a message you have for people, or visual motifs that represent your location that you would like to incorporate.

- ✱ Are there any plants, animals or landmarks that represent your place?
- ✱ Are there colors that pop into your mind when you think of your place? Are there any colors that the place is missing?

CHOOSE A BRUSH





# Design your mural

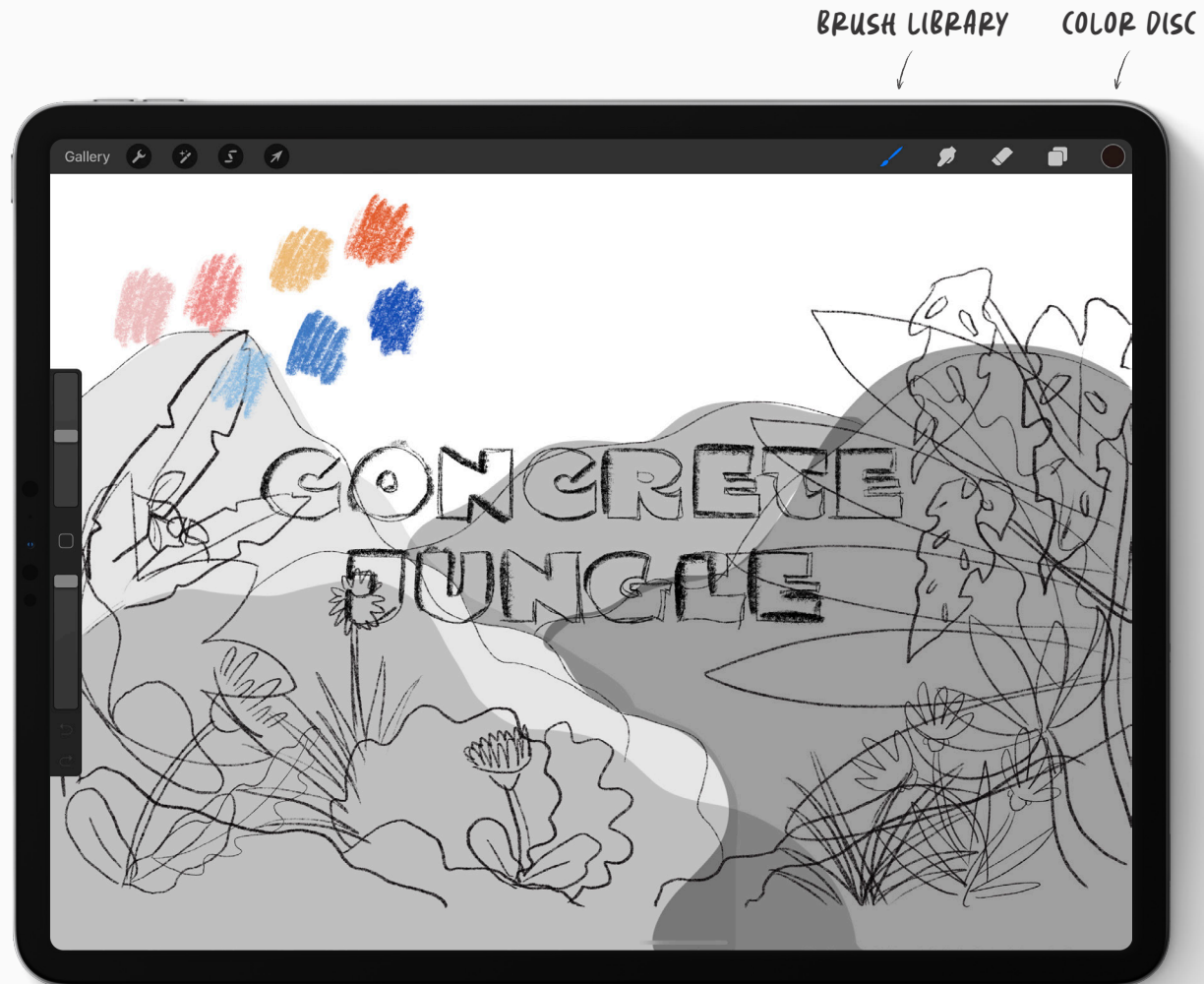
5.

## Initial sketch

Create a new canvas and sketch out a design for your mural, referring to your earlier brainstorming notes.

### TIP

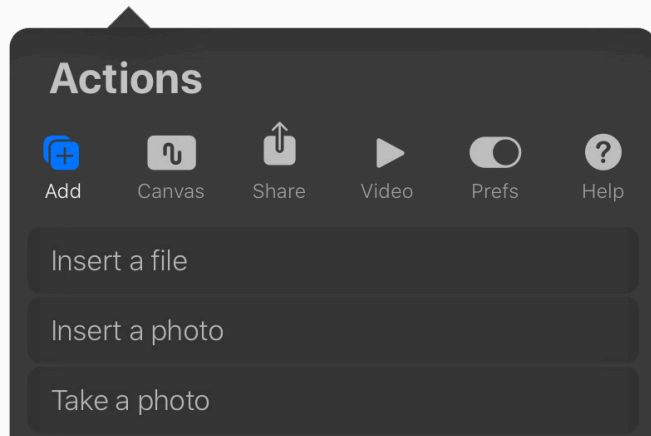
At this point it's still about ideas. Focus on keeping it loose, quickly exploring ideas, and experimenting with colors.



## Paste in place

Insert the image of your location to see your design in situ.

- 1 Tap the wrench icon to open the *Actions* menu, and tap *Insert a photo*.
- 2 Select your chosen image to insert it into your canvas.
- 3 Make sure that your photo is on a layer underneath the layer with your design on it. Tap and hold a layer to move it in the *Layers Panel*.
- 4 Tap the arrow to use the *Transform* tool to resize your image and make it fill the canvas.



**WARP**

If your wall isn't flat you can use the *Warp* tool in *Transform* mode and use the nodes to make your design sit flat on the surface.



# Create your artwork

7.

## Background

Open the *Layers Panel* and tap the **+** icon to create a new layer.

Then select a Brush from the *Brush Library* and start painting in your background elements.

You can turn your design layer off and on to check your progress.

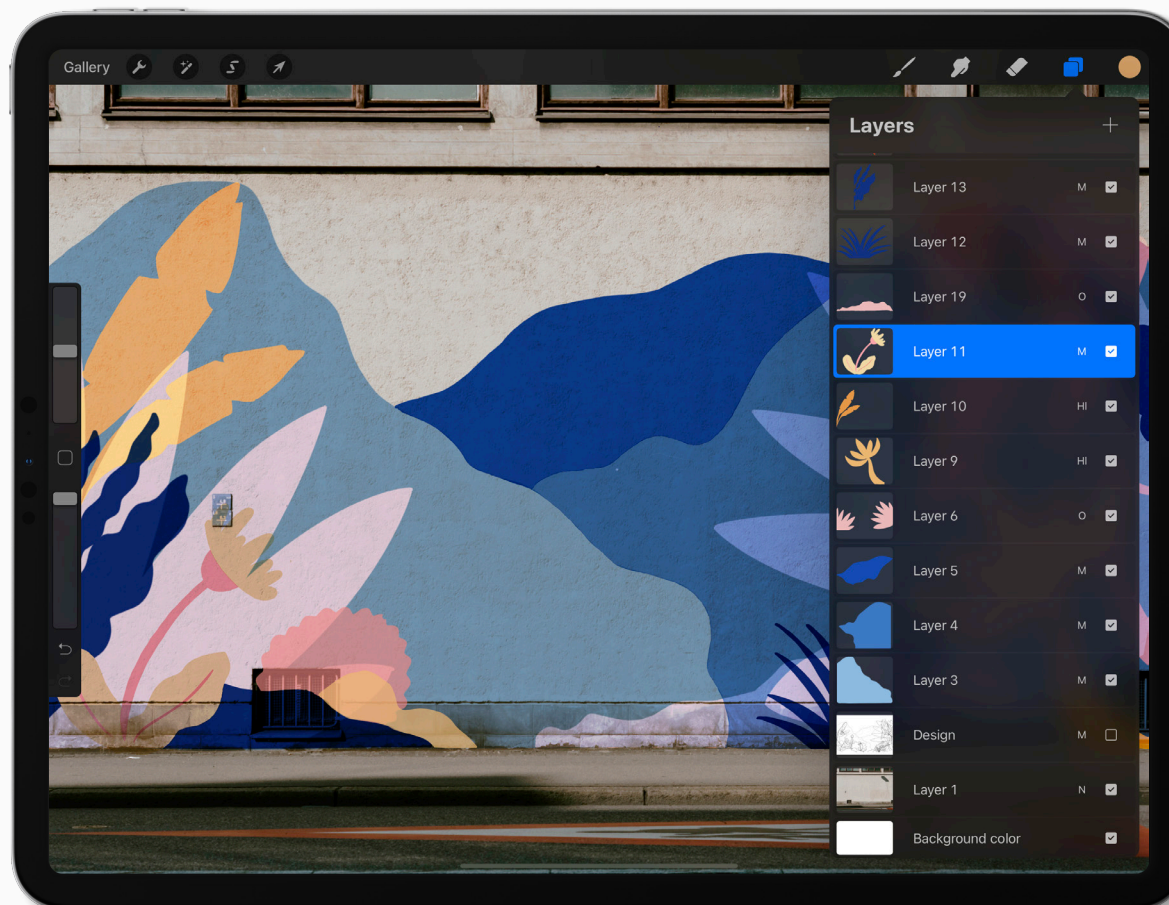
BRUSH  
LIBRARY

LAYERS  
PANEL



## Keep going

Keep painting in the elements of your artwork, working from the background to the foreground. Keep each key part of the design separate on it's own layer.





## Blend Modes

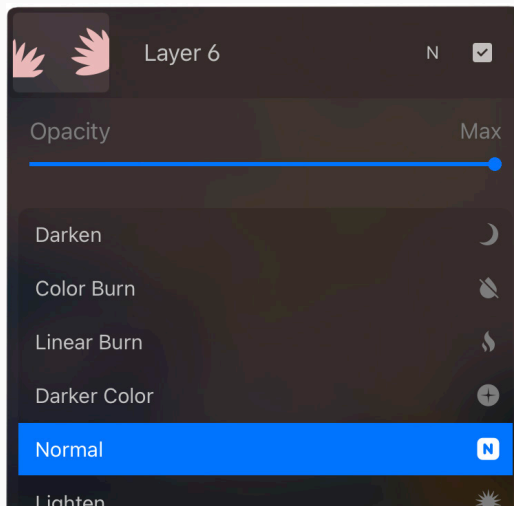
The Blend Mode of a layer changes how its colors interact with the colors on layers underneath it.

This is how you can get your artwork to look like it's painted on the wall with texture showing through.

To open your Blend modes:

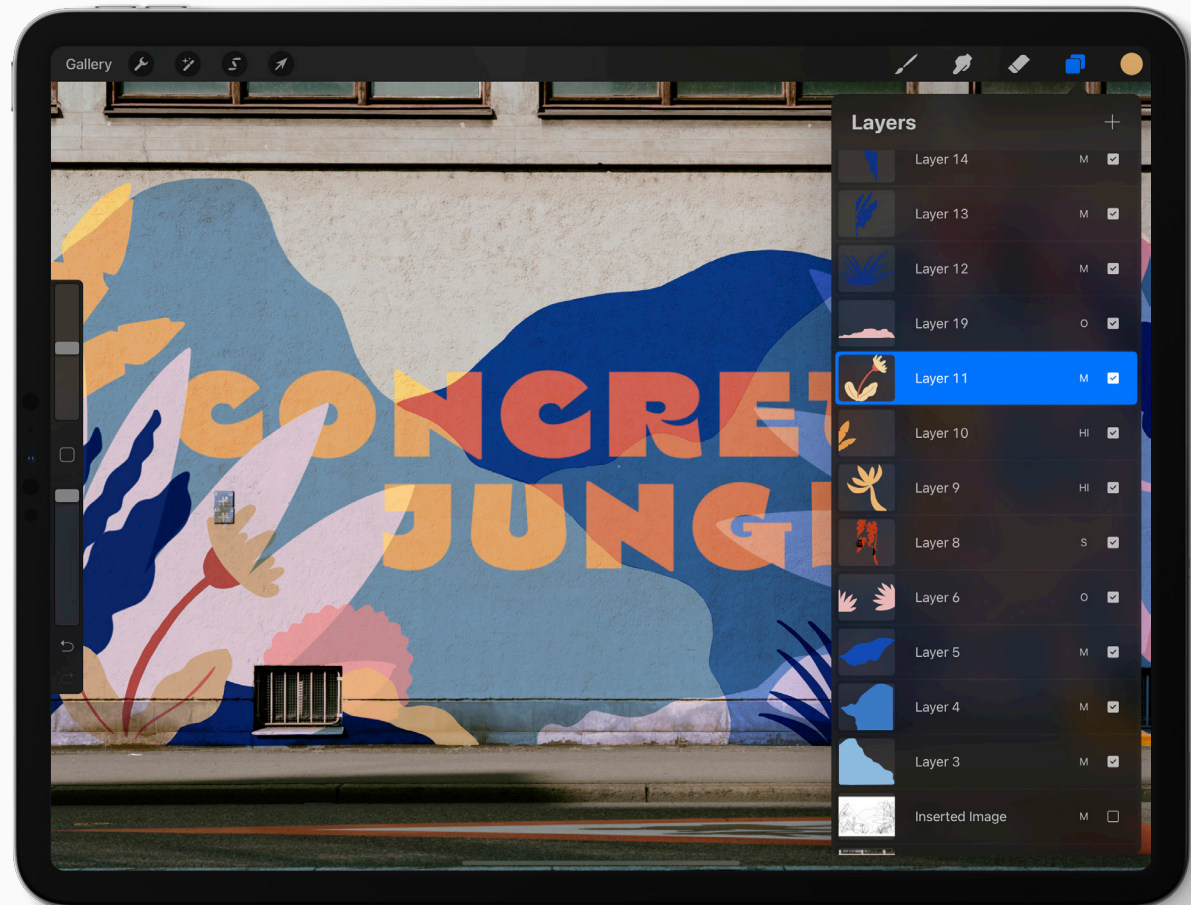
- 1 Open your *Layers Panel*
- 2 Tap the letter *N* on the right hand side of your selected layer.

TAP N TO  
OPEN



BLEND MODE  
MENU

LAYERS PANEL



## Playing with Blend Modes

The best way to learn to use Blend Modes is to have a play.

Scroll through the list and see what kind of modes blend your artwork into the surface well.

In the example artwork, the lighter shapes have the *Overlay* Blend Mode apply, and the darker ones are *Multiply*.



NORMAL



OVERLAY



MULTIPLY



SCREEN

## Masks

Once your artwork is complete, create *Layer Masks* to remove the paint over any powerpoints, door handles, gaps or edges.

- 1 Open the *Layers Panel*.
- 2 Tap a layer to open the *Layer Options* Menu.
- 3 Tap *Mask*. A Layer Mask attached to your original layer will appear.
- 4 On the Layer Mask, use a black brush to color the areas that you would like to remove the mural from. If you make a mistake you can erase the black, and add the mural back in.





## Congratulations

You've completed your first public artwork.





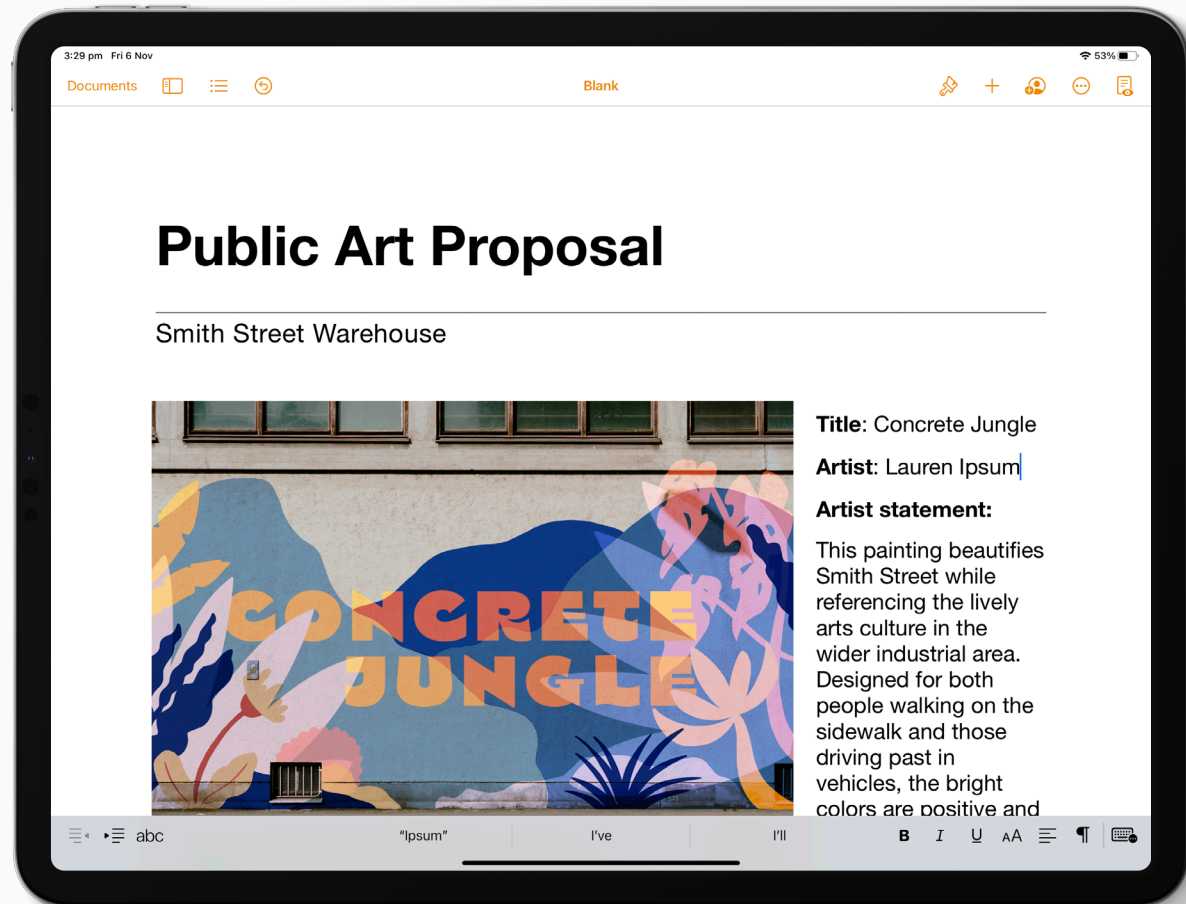
# Take it further

13.

## Make it real

While it's lots of fun working in the abstract, it's even more exciting to see your artwork out in the wild.

If you know the person, business or council that owns the space you've created a design for, write a proposal suggesting they turn it into reality.



# Create

Artistic expression helps make education meaningful, memorable and fun. Find more creative lesson ideas at [education.procreate.art](https://education.procreate.art)

To dive deeper into the full creative potential of Procreate, see our Handbook at [procreate.art/handbook](https://procreate.art/handbook)



Learn with  
**Procreate®**