

LESSON IDEA

# Shape your Solar System

DESIGN

SCIENCE



Learn with  
**Procreate**<sup>®</sup>



# Lesson ideas

Use these Lesson Ideas to spark  
your imagination for using Procreate  
in the classroom.

Feel free to take them further  
and make them your own.

# Shape your Solar System

1.

## Create galactic art

Procreate has a range of digital art features that make it easy and fun to create beautiful Solar System art.

All you need is an iPad and:



Procreate



Safari





# Be inspired

## The universe is beautiful

In this lesson we will take inspiration from the universe, and curiously observe why planets look the way they do.

2.



Jupiter taken by NASA's Hubble Space Telescope on June 27, 2019



# Learn about layers

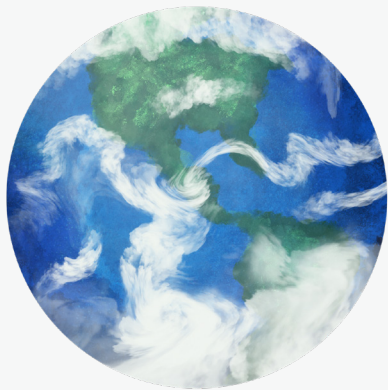
3.

## A digital art tool

This lesson takes advantage of layers.

Digital art uses stacked layers. This gives you the power to paint, erase, edit and rearrange layers individually, without ruining what you have already done.

For more tips on layers, see our Beginners Guides at [education.procreate.art](https://education.procreate.art).



# Getting started

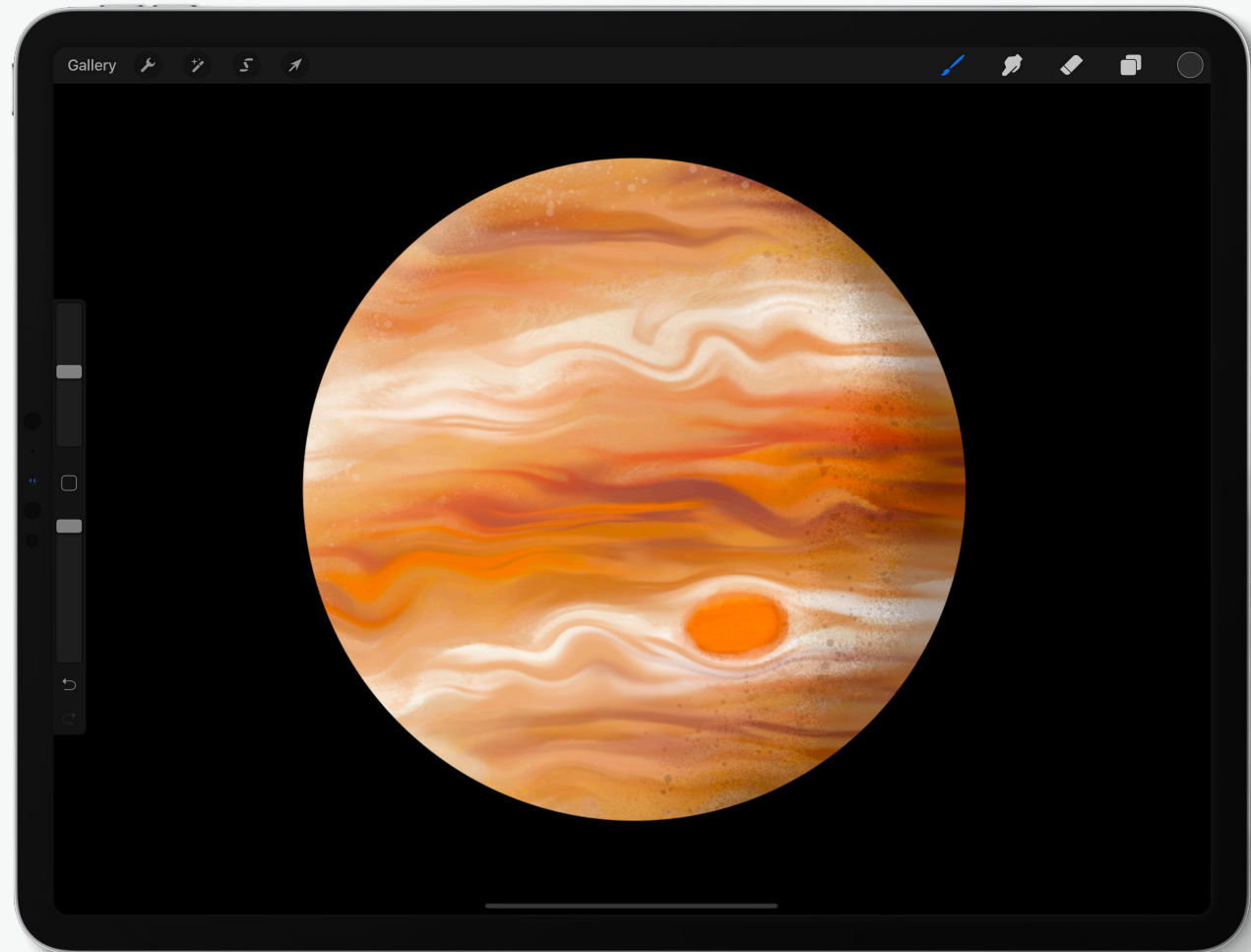
4.

## Pick a planet

Use the *Safari* app to explore the planets of the Solar System. Collect some images that you like. We will use Jupiter in this example.

## Create a canvas

Open the Procreate app and select the + in the top right to create a new Screen Size canvas.



Procreate



# Step one

5.

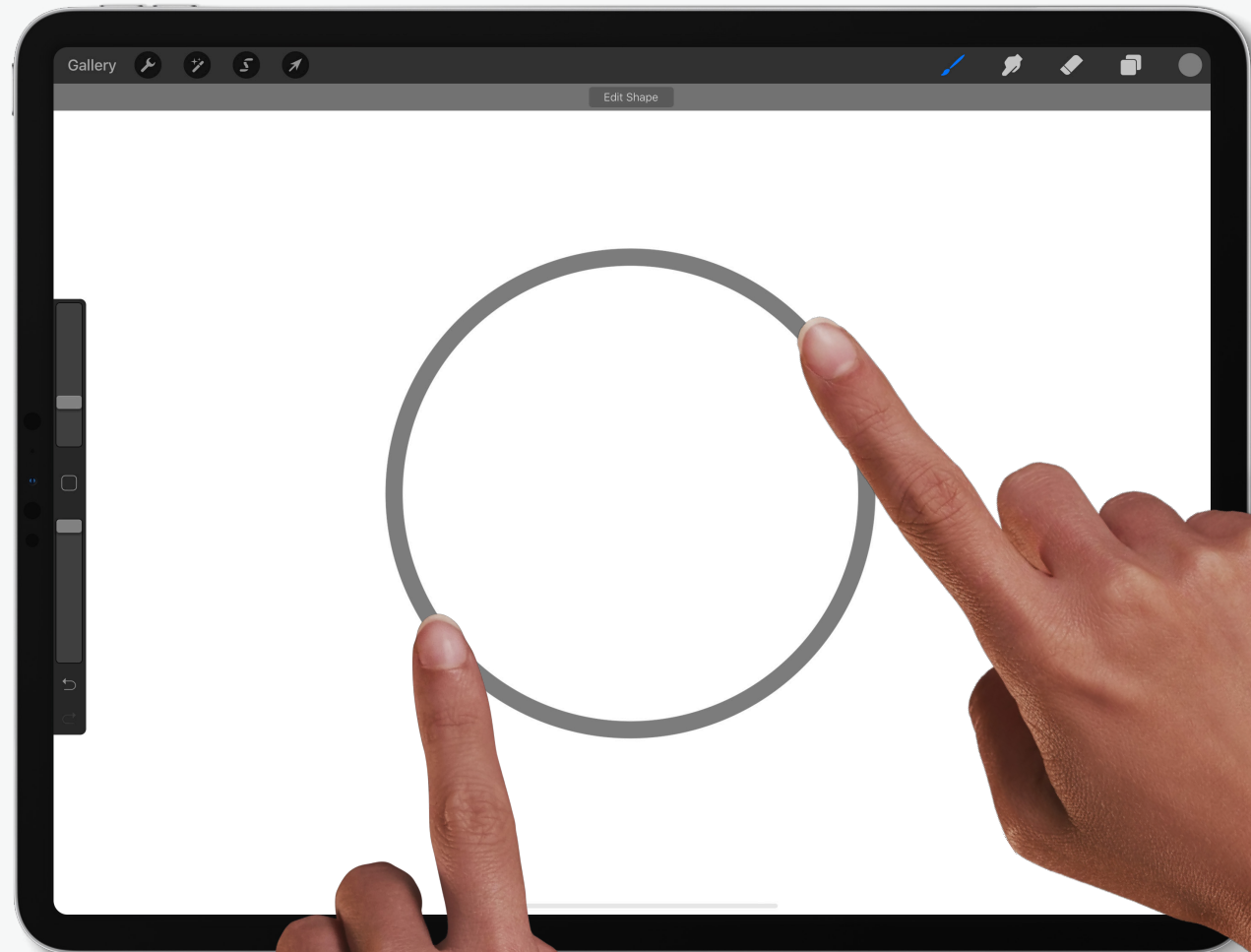
## QuickShape

QuickShape helps you make a perfect circle!

Draw a rough circle, then hold for a second at the end to snap it into a smooth curve. Whilst holding, touch the screen with your left finger for a perfectly round circle.

### TIPS

- \* For a nice clean circle, use the *Round Brush* in the *Painting* set.
- \* Use a neutral color like gray for your planet as you will be adding color later.



Procreate



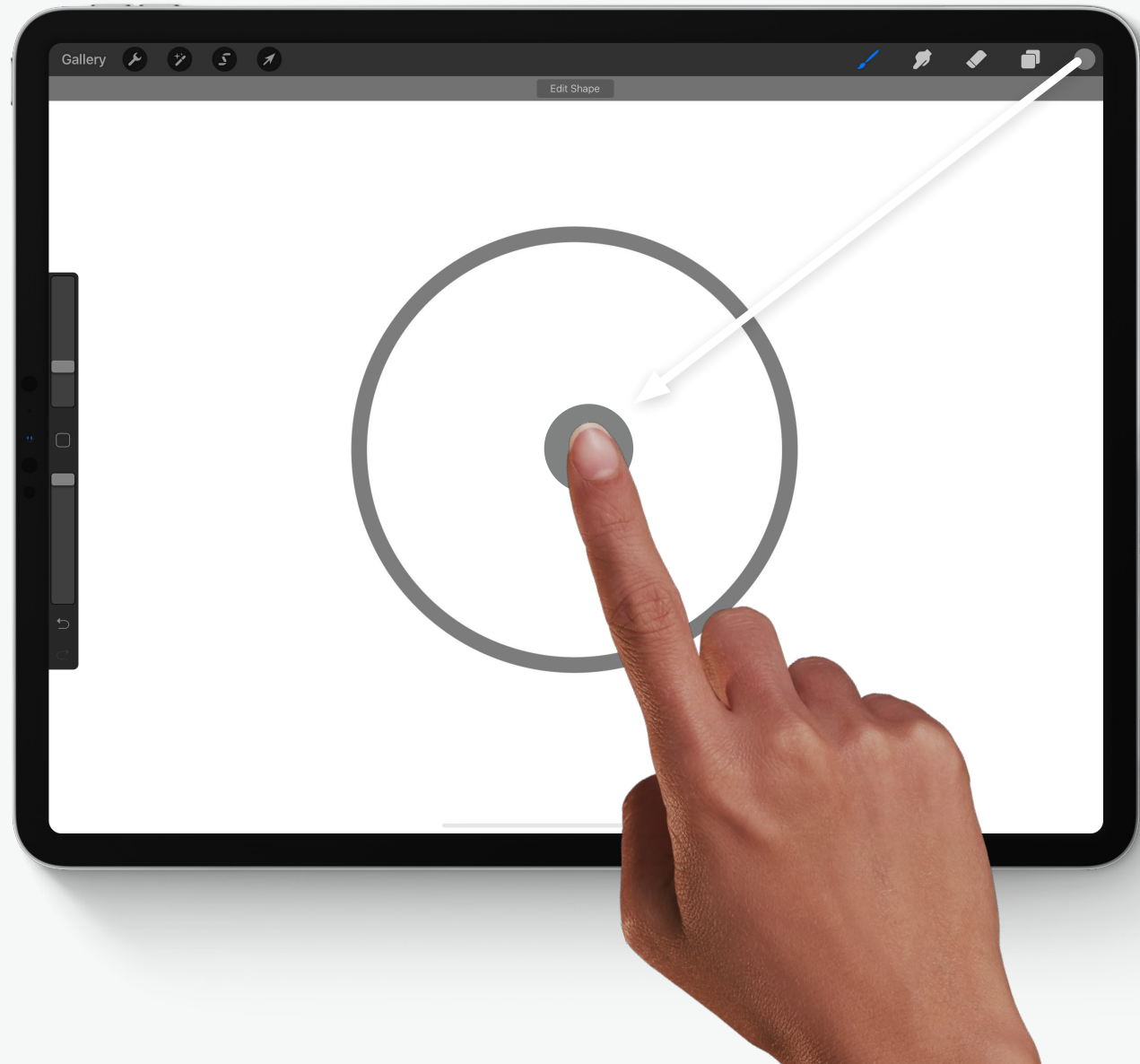


# Step two

6.

## ColorDrop

Drag the *Color Button* to fill your circle with colors.



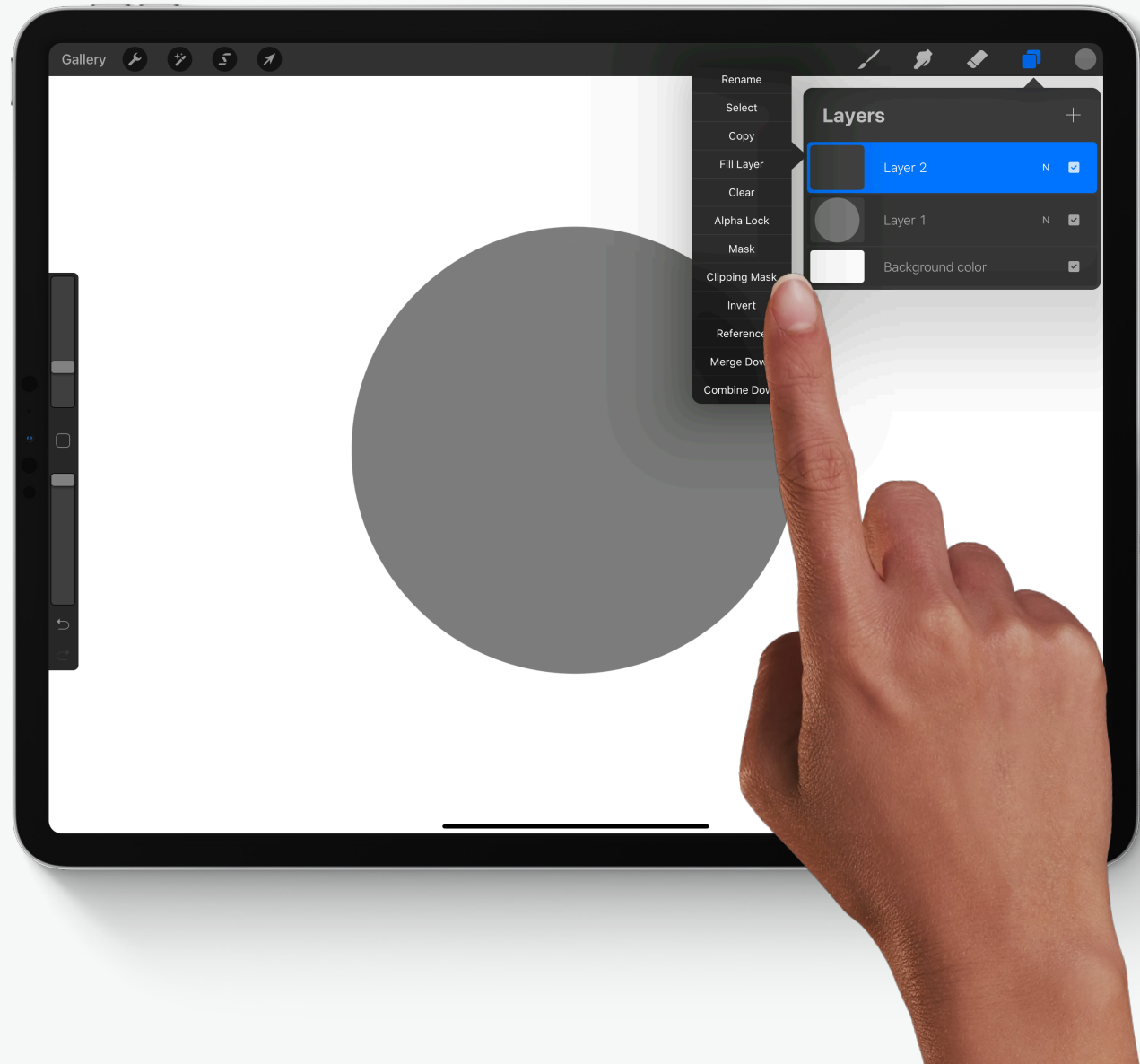
# Step three

7.

## Clipping Mask

Tap the plus icon (+) in the *Layers* panel to create a new layer. Then tap that layer and select *Clipping Mask*.

This means any artwork on the new layer will remain within your circle.



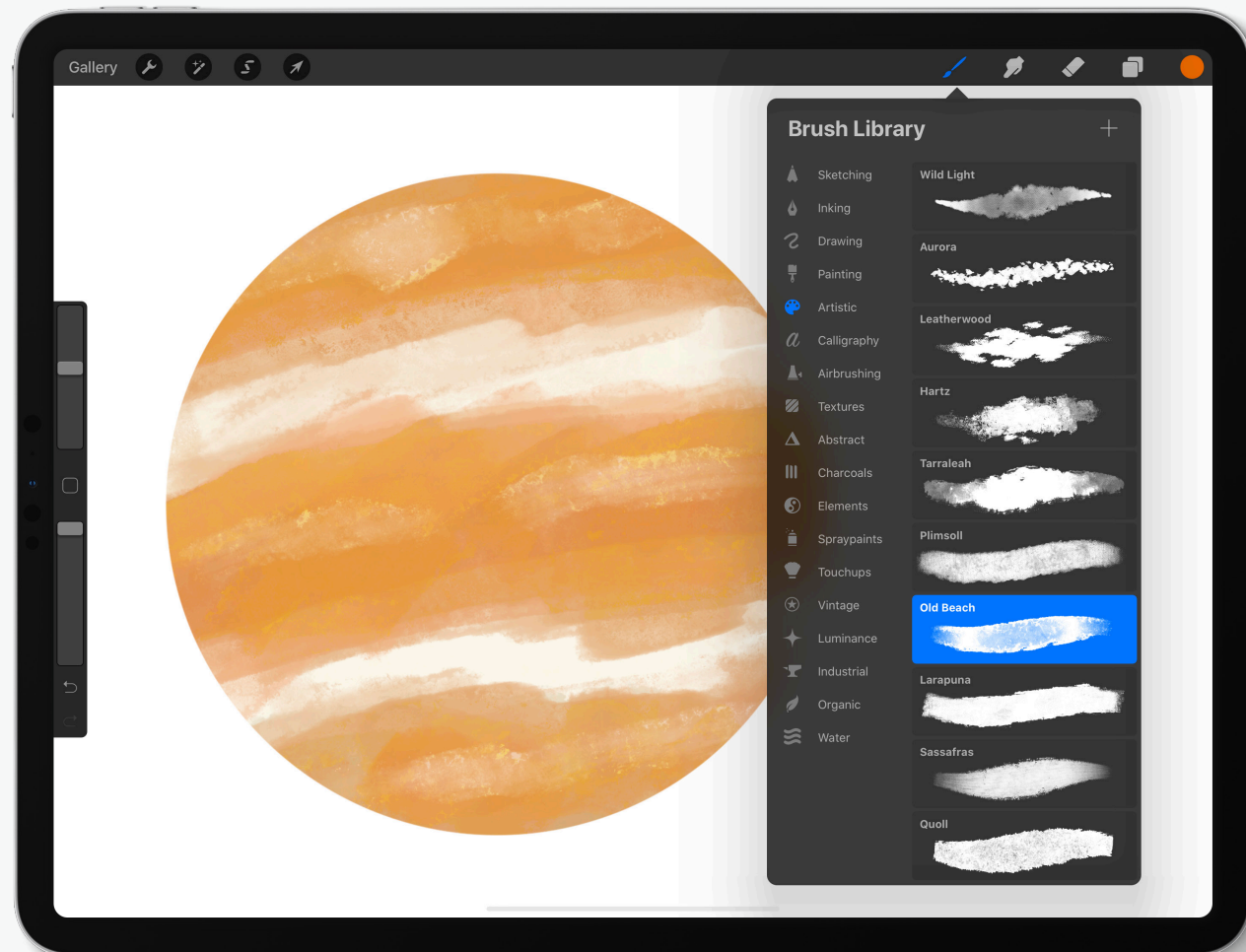
# Step four

8.

## Base coat

Tap the *Brush* icon and select a brush. We have used *Old Beach* in the *Artistic* brush set here.

Don't go into too much detail in the base coat, just try to create the main colors and textures of your planet.





# Step five

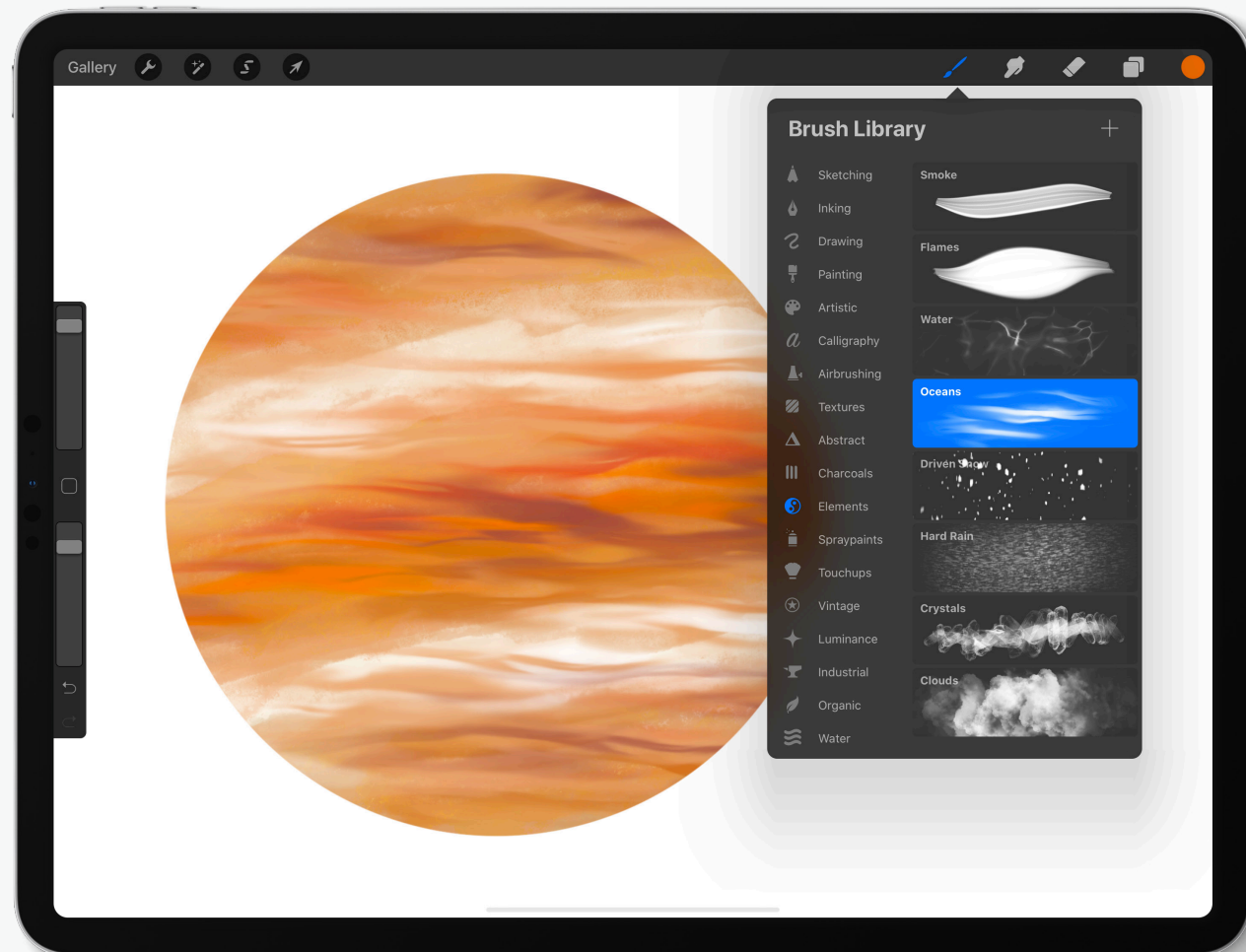
9.

## Top coat

Now you can add more detail. Try using darker and lighter colors to add more definition. Select brushes with more defined textures, like clouds, waves or spots.

### TIPS

- ✳ Feel free to create new layers for new levels of detail. Remember to use a Clipping Mask on each layer.



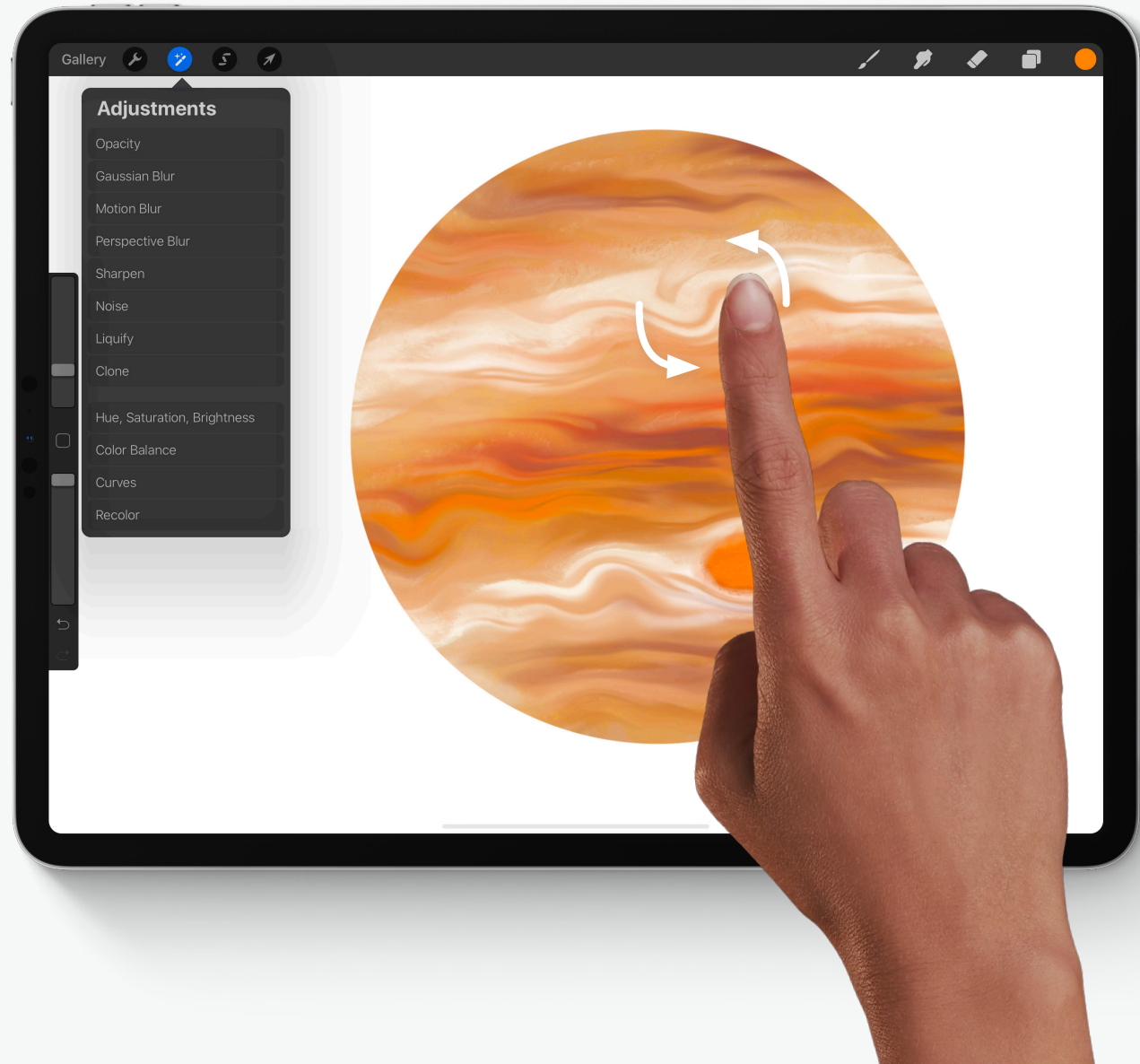
# Step six

10.

## Liquify

Tap the *Adjustments* icon and then tap *Liquify*.

Select from the *Liquify* effects at the bottom, and have fun! We are using *Twirl Left* in this example.



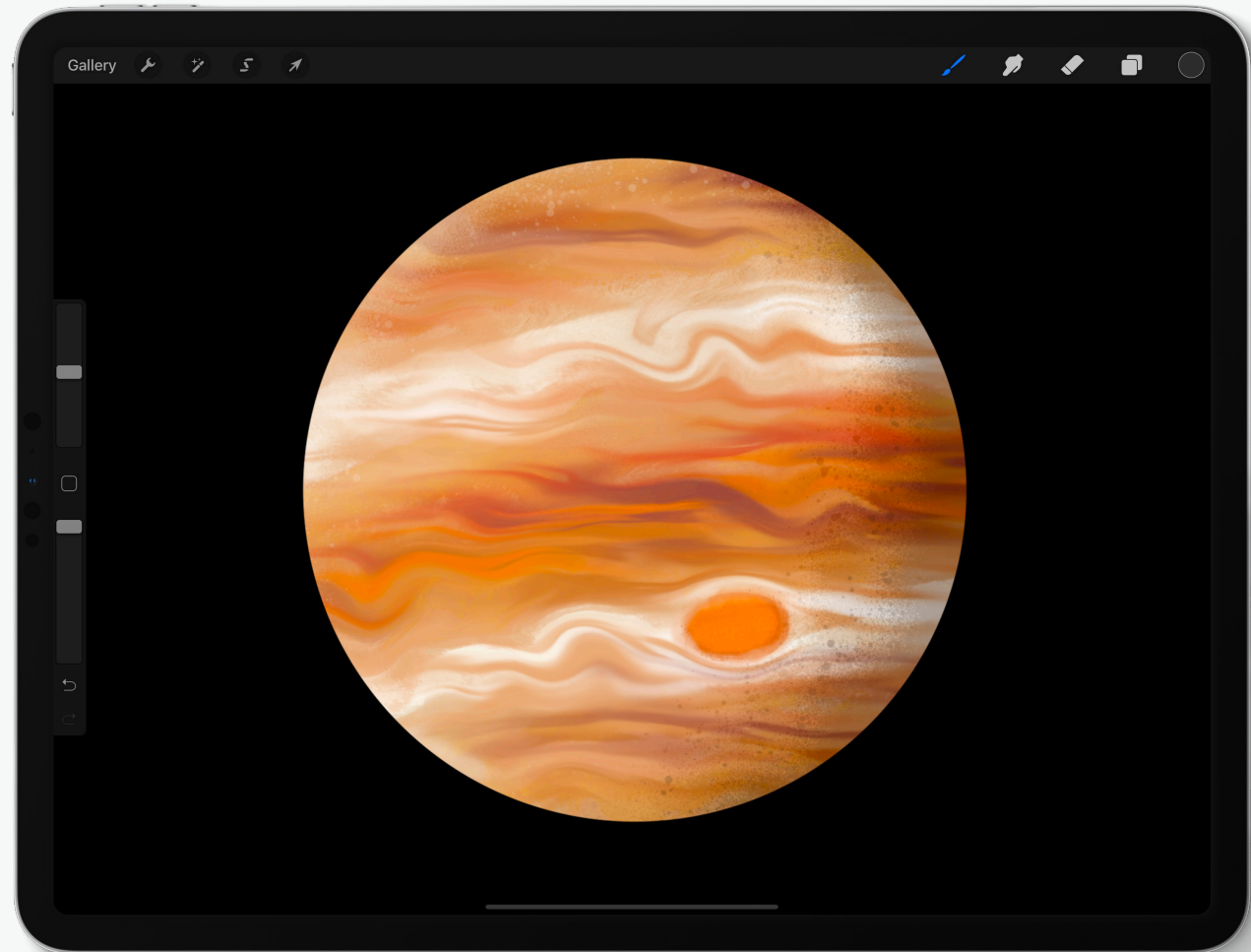
# Step seven

11.

## Finishing touches

Try changing the *Background color* in *Layers* to a dark color. Add some final touches such as shading and light.

Drag the *Brush Opacity* slider down to create soft light and shadow. We have used brushes from *Spray Paints* to create a textured shadow.





# What's next?

12.

## More planets!

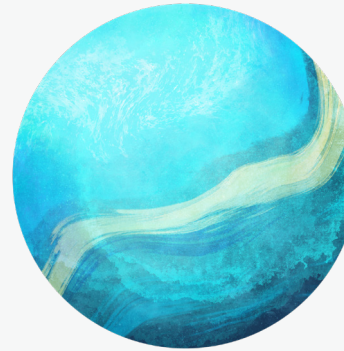
Digital art is all about experimenting. Play around with the tools you have learned so far to create more planets for your Solar System.

### TIPS

- ✳ Stay organized by creating a new canvas for each planet.
- ✳ Use the Safari app to find images and inspiration for your planet artwork.



EARTH



URANUS



VENUS



# Bring it together

13.



# Set the scene

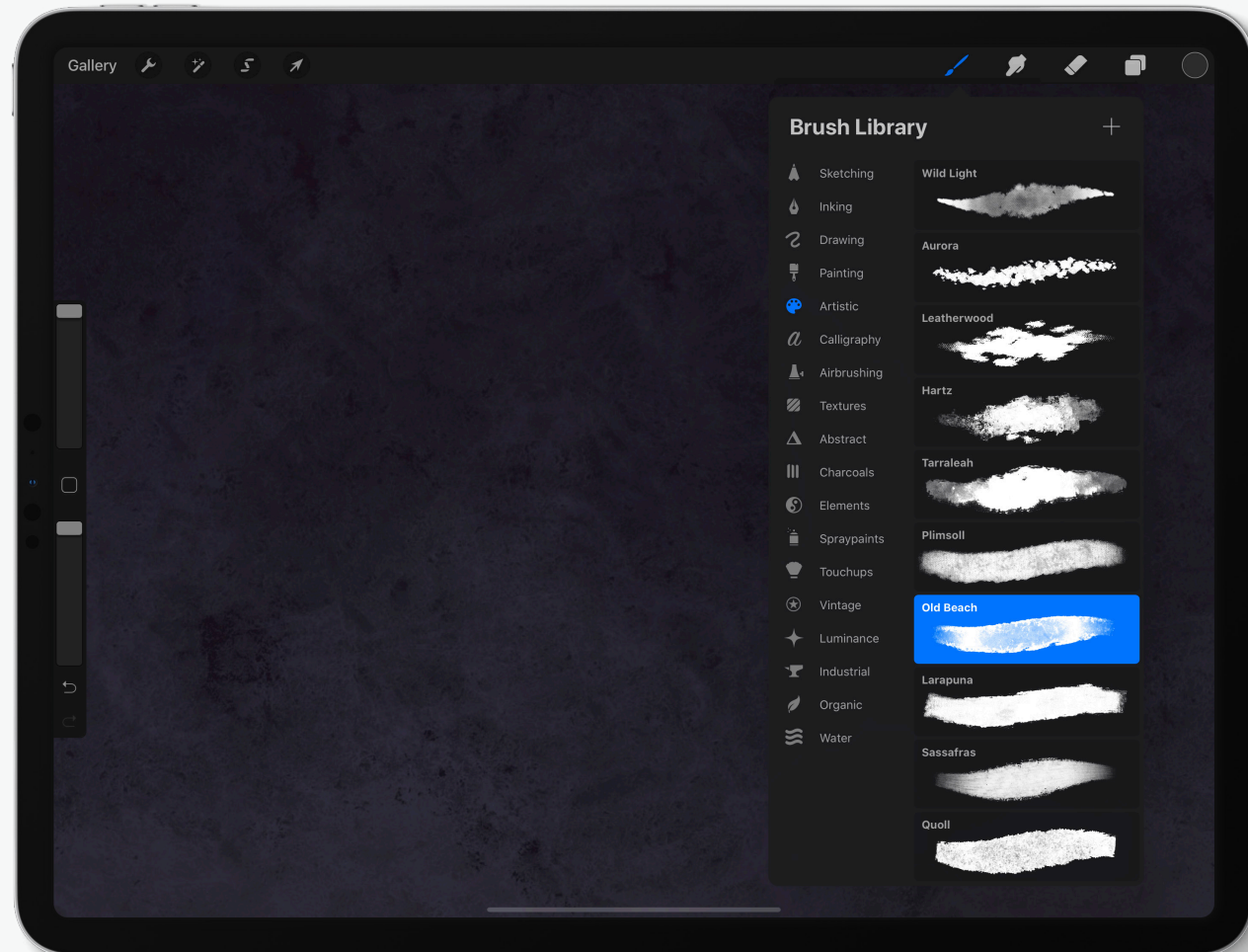
14.

## Create a night sky

On a new canvas, paint a dark, textured background by playing around with different shades of textured brushes.

### TIPS

- \* In this example, we have used the *Old Beach* brush in the *Artistic* set.
- \* Increase the brush size (top slider on the left) to make broad, textured strokes.



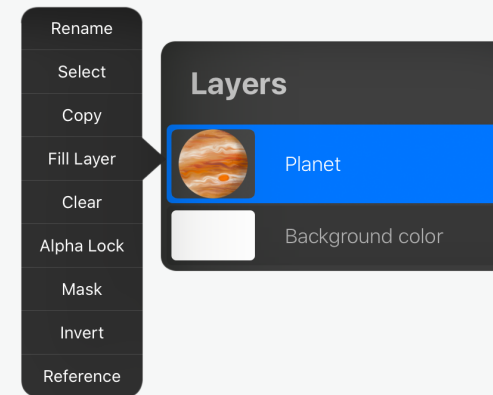


# Add your planets

15.

## Copy and paste

Easily add planets to your galaxy. Tap the planet in the *Layers* panel and select *Copy*. Open your galaxy canvas and select the wrench icon, tap *Add*, then *Paste*.



### LAYER TIPS

- ✳ To copy an artwork using this method, it must be one single layer. If you have multiple layers, simply merge them by pinching the layers together.

# Create a galaxy

16.

## Lay it all out

When you paste in a planet, the *Transform* tool will automatically apply. The dotted line around your planet is called a bounding box.

### TIPS

- \* Drag the corners of the bounding box to resize your planet.
- \* Drag within or outside the bounding box to move your planet around the canvas.



# Take it further

17.

## Can you complete the Solar System?

Can you add the lines of orbit?  
Perhaps a few shooting stars?

### TIPS

- \* Use a small size and low opacity on your orbit, to make it subtle.
- \* Make perfect curves using *QuickShape*, by holding your finger for a second at the end of each line.
- \* Making perfect curves can be tricky, so remember your two-finger tap to undo any mistakes!





# Create

Artistic expression helps make education meaningful, memorable and fun. Find more creative lesson ideas at [education.procreate.art](https://education.procreate.art)

To dive deeper into the full creative potential of Procreate, see our Handbook at [procreate.art/handbook](https://procreate.art/handbook)



Learn with  
**Procreate®**