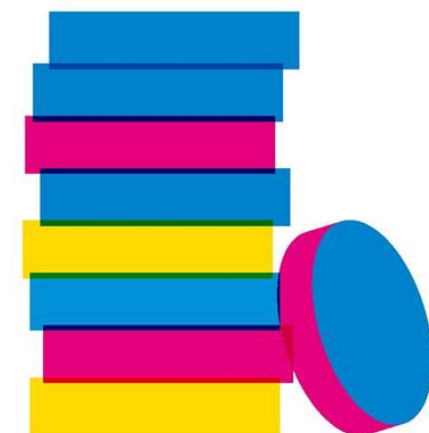




Stewarding a local movement

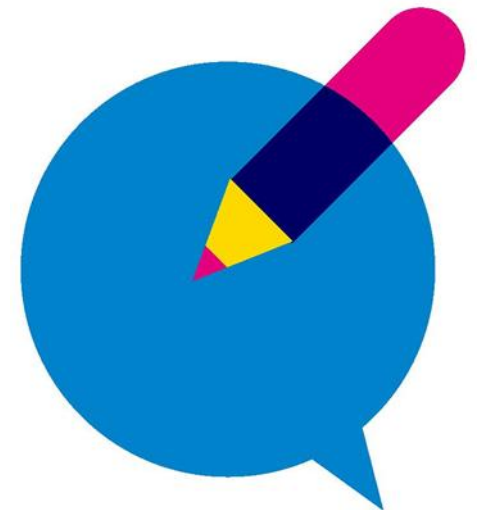
The Ripple Effect



Barnwood Trust



Barnwood House Hospital was a private mental hospital in Barnwood, Gloucester, England. It was founded by the Gloucester Asylum Trust in 1860 as Barnwood House Institution and later became known as Barnwood House Hospital



Catalytic role

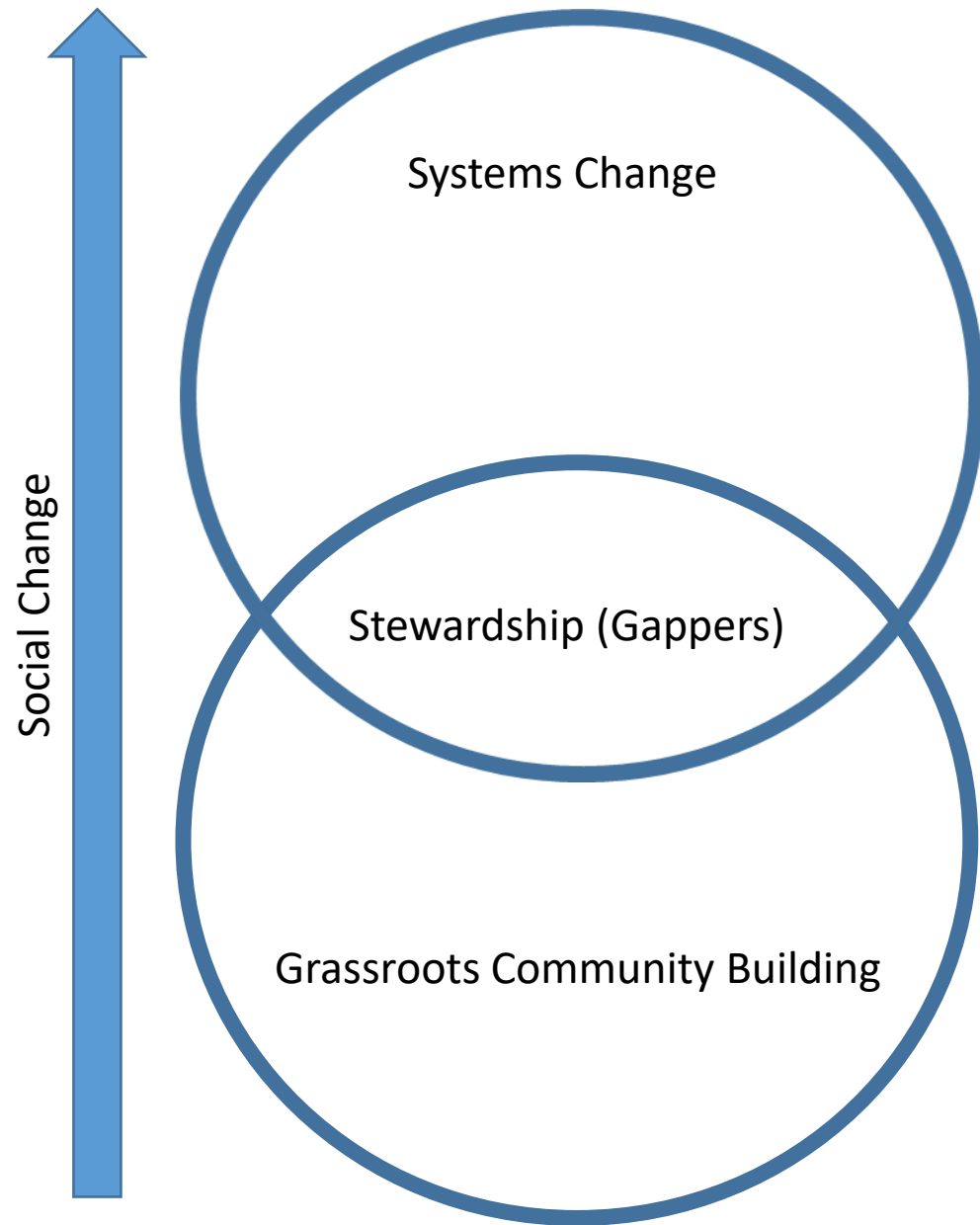
Barnwood Trust's vision is to create the best possible environment in Gloucestershire for disabled people and people with mental health problems to make the most of their lives.

Barnwood's Mission is to act as a catalyst for durable change.



The Ripple Effect





Changing the system

The people in the middle often use the stories of community led change to nudge and influence the system. When working together we influence cultural change both in community and within service provision.

Consider the ripple affect as one thing in the system changes.



Proliferating change

- Learning the craft of community building ourselves. Using the stories to influence change
- Working with Gloucestershire police to adopt practice with a small group of PCSOs, then attempt to mainstream practice across the workforce. Influencing their culture.

Working with Gloucester City Council to adopt practice and leverage more support through creating a new politically free organisation.



Losing Control

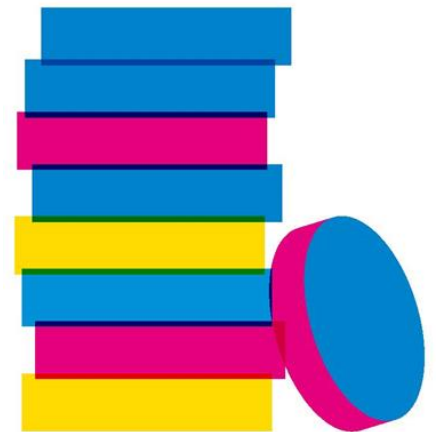
As social change starts to happen we are finding that we are creating a local movement with others supporting Barnwood's original vision and taking their own actions.

As this spreads we are also losing control! We are needing to understand how let go of power to unleash social change.



Some help please....

**How do you lose control,
without losing values?**



Stay in touch

Richard Holmes

+44 07794992741

richard.holmes@barnwoodtrust.org

Twitter: @mrrichholmes

