



# Rural Development and ABCD

The Story of Kulin

1994 – 2017

[www.kulin.wa.gov.au](http://www.kulin.wa.gov.au)



# Background

- Local Govt CEO since 1989 2003
- Indigenous Affairs on community 2003 -2013
- Community Development activities across 3 LG's – Laverton, Kellerberrin, Augusta Margaret River
- Involved with Peter Kenyon initially in 1994 in Kellerberrin
- Now CEO Kulin 6 mths - able to see the product of 22 years ABCD activity in one location
- Able to assess, have insight into w,w,w,w,h,hm of Kulin's activities as a community

# Kulin - A beginning

- 1994, Kulin small Wheatbelt town - effects of low commodity prices,
- population decline - loss of services.
- Make or break time,
- Shire of Kulin instigated a '*Community Futures*' Workshop 1994 – P Kenyon
- participants prioritised and initiated a number of working groups
- Integrated plans – LG and community



# Back then

- adopted vision statement – *“To sustain and improve the local community through positive opportunities for business and quality of life. The community must lead activities, which will develop and increase the profile of Kulin and attract people in the district. The community must embrace initiatives to preserve existing businesses and services in the district. The community must remain proactive and consider all new ideas and initiatives.”*

# Major Activities/Results Since

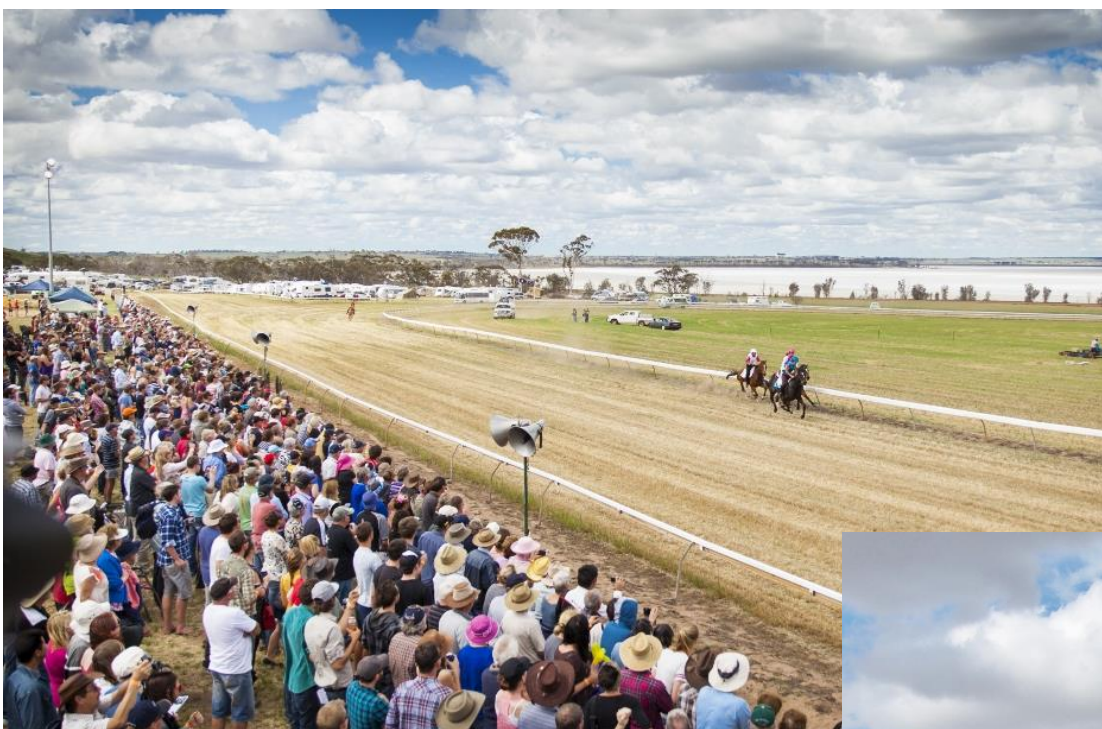
- Kulin Bush Races – (1994+) development of impressive event facilities, huge community volunteer mobilization and significant economic returns (\$300kpa); seed capital













- Development growing tourism industry through Tin Horse Highway, (1995+) new caravan park, (2008) billboards on wheels initiative, creative promotions, 24 hour fuel outlet (2013)
- RV facility (2015)





- Implementation of a town beautification and water-saving strategies; (2010+)
- First Bendigo Community Bank in WA; (1999)
- Accommodation strategy (2006) - building of retirement units (2001+) and new private housing; (2011)
- New public amenities; (2001+)
- State of the art recreation facilities including new Recreation Centre (2003)
- a regional water park facility; (2001 Slide) (2012 pool)





- Multi Purpose Health Service (including the first tele health unit in WA) (2015)
- co-located Fire, SES & Ambulance building, (1997)
- Community Resource Centre, (2010) now Admin Centre co-located (2016);
- Creation - Camp Kulin service for youth using volunteers. [www.campkulin.com.au](http://www.campkulin.com.au)













# What do I see

- High Standards
- Review everything - seek best available result.
- ABCD principles abound – conversations everywhere
- The last thing you did for community
- Leadership - dual relationships link in all around town
- Energy and \$\$'s invested in CD
- Leadership melting pot



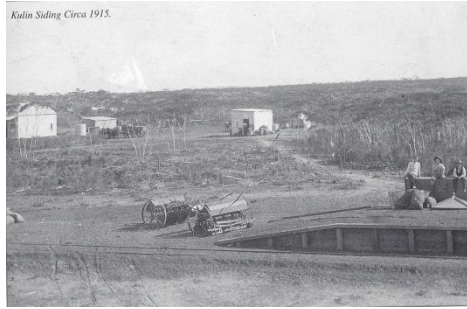
- The “Plan” is constantly evolving
- The Plan sits with the local government role
- Reuse of physical assets
  - Bowling Club Clubhouse
  - Becomes Backpacker Hostel
  - Becomes Camp Kulin

Every successful idea had numerous starts

It's a matter of FAMILY



Kulin Siding Circa 1915.



# Intergenerational Leadership

- Road trauma – Wheatbelt double national averages
- Kulin DHS students prepare road safety message
- Federal Minister Transport visit
- Includes driver inattention game and road safety quiz
- Prepared video of Road safety message



# Royal Automobile Club (RAC) Elephant in the Wheatbelt Campaign



DRUG AWARE CAMPAIGN

