

# 2019 RAILWAY ANTIQUES & COLLECTABLES AUCTION

10.00am Saturday 2nd November 2019

58 Market Street, Mudgee

Viewings: Friday 1st November from 4.30pm to 6.00pm & Saturday 2nd November 9.00am

**A 10% buyer's premium inclusive of GST is applicable at this sale**

*Full catalogue available for download at [www.mudgeeauction.com.au](http://www.mudgeeauction.com.au)*

## COLLECTABLES:

13 X TOY TRAINS, FUEL DRUM, 2 X BOXES VARIOUS TOYS INCL. TRAINS, BOX BOOKS & RAIL EPHEMERA, SPEEDOMETER, FRENCH DOUBLE SIDED PLATFORM CLOCK, ENGLISH 8 DAY MANTEL CLOCK, GUILLOTINE, BOOKING OFFICE SIGN, DISPLAY CASE OF PLAYING CARDS, EARLY ELECTRIC KETTLE, CASTROL 1 PINT BOTTLE & POURER, CASTROL 1 QUART BOTTLE & RED POURER, GRIFFITHS VARNISH TIN, SHELL QUART TIN, MOBIL & SLEIGH TIN POURERS (2), 2 X VACUUM 1lb GREASE TINS, 2 X SHELL HOUSEHOLD OIL TINS, ARMSTRONG SHOCK ABSORBER TIN, GOLDEN FLEECE 1 PINT TIN, 2 X NSWTD OIL TINS, CASTROL 1 QUART TIN, 3 X TINS & PACKAGE, 3 X SHELL 1 QUART TINS, SHELL & CASTROL 1 GAL TINS (2), CHAMPION & KLG SPARK PLUG TINS (2) WITH CONTENTS, 4 X EARLY FLY SPRAYS, 2 X LASTS (AF), MOBIL LUBE GUN, CALSPAR TIN, 4 X POLISH TINS, 3 X SMALL OIL TINS, RARE EARLY NAIVE MALLET, EARLY BRANDED PICK FOR FETTLERS USE, C.O.R. DRUM & FUEL CAN, C.O.R. KEROSENE BOX, EARLY STATION MANAGER'S SLOPE & CONTENTS, HUNDRED WEIGHT ANVIL EX KATOOMBA, EARLY FETTLERS WHEELBARROW, 2 X GAL BUCKETS - ONE NSWGR, RAILWAY STOVE, RAILWAY LIGHTS, STATION SIGN POLE, WEDDERBURN RAILWAY SCALES, BOX HORNBY TRAIN TRACK & MECCANO PIECES, SALTER 50KG SCALES, EGG BOX, LITHGOW SOFT DRINK CO. BOX, 2 X P.T.C. TARPAULINS, LARGE SET FAIRBANKS 2 CWT SCALES, RAILWAY DISSOLVINATOR BRANDED HYGEIA No 14331, PR UNUSED MAIL BAGS, BOX VIDEO & BOOK RAIL REFERENCES, 3 X LANTERNS, NSWGR MIRROR & PHOTO & REFERENCES, PR GREEN GLASS LANTERNS, 2 X VACUUM GUAGES, LOCO LAMP, QTY RAIL EPHEMERA, 6 X VACUUM GUAGES, 4 X BOX ENDS - MONKEY, LAUREL (2), TYDOL, NATIONAL EMERGENCY SERVICES WARDEN SIGN, TEXAS TENTS WATER BAG, 8 X RAIL SIGNS - EX WALLERAWANG, THOMAS & WILLIAMS EARLY LAMP, LAUREL KEROSENE TIN, SHELL PENNANT KERO DRUM, SHELL MOTOR SPIRIT TIN, KENRICK CAST 1 PINT SAUCEPAN, ENAMEL LIDDED SAUCEPAN, EARLY CAST SAUCEPAN, EARLY BRANDED HAY KNIFE, QTY ENGINEERING PLANS, INCL ZIG ZAG, MT VICTORIA, KATOOMBA, LITHGOW & OTHERS, SLIDES, GUARDS NOTEBOOK, TICKET SALES & MODEL WHEELS, EARLY MOUSETRAP, 2 X LANTERNS, BUS TOKEN & 3 X SIGNAL LIGHT GLASSES, 2 X CLOCKS & 4 X TINS, FRAMED PLANS OF MUDGE RD STATION 1869 & ESKBANK TO BOWENFELS, CITY RAIL BUS SIGN, TOOHEYS NEW PUB SIGN, C'WEALTH SAVINGS BANK SIGN ON TIN, FRAMED PLAN NEWNES TO LITHGOW LINE, RAIL AD. SIGN FOR 'BLUE MTS SEAFOOD', RAIL AD. SIGN FOR JORDANS PET SUPPLY CENTRE, RAIL AD. SIGN FOR DAVIDSON'S MENSWEAR, RAIL AD. SIGN FOR NIAGARA PHARMACY, FRAMED 1915 WEST LINE TIMETABLE, FRAMED POSTER FOR 50 YEAR CELEBRATION, ELECTRIC TRAINS TO LITHGOW, DOUBLE SIDE TIN SIGN "DOES NOT PICK UP", METAL SIGN DOUBLE SIDED FOR CENTRAL WEST EXPRESS, 35TH EDITION ROBINSONS RAIL AGE, SKETCH & FREIGHT DIAGRAM OF NSW, SPORT WHEEL ELECTRIC CHLDRENS MOTOR BIKE (AF), 3 X PRINTS IN FRAME, RAILWAY CROSSING SIGN, COLLECTION RAILWAY PRINTS IN FRAME, S10 GREAT EXHIBITION OF VICTORIA IN FRAME, QUEEN VICTORIA HOSPITAL WENTWORTH FALLS SIGN, RAIL CROSSING SIGN ON TIN, EARLY WOOD SIGN (DOUBLE SIDED) OF HEIGHT ABOVE SEA LEVEL, PIONEER WAY TIN SHIELD SIGN, TIP TOP TIN SIGN DOUBLE SIDED, RAILWAY STOP/GO SIGN, 6 X NSW RAIL TOOLS, LARGE COW BELL, CARRIAGE MIRROR, 2 X NSWTD SPANNERS, NSWTD FETTLERS PICK, 4 X NSWTD SPANNERS, NSWTD SPANNERS X 3, 2 X BRANDED RAIL PICKS, HEAVY BRASS BELL - EARLY PIECE, 2 X SMALL BELLS, EARLY ADJUSTABLE WRENCH, BOARD OF 6 X G.E.C. PHONE BELLS, 2 X BOXES ASST RAIL EPHEMERA, MATCHES & OTHER, 2 X LARGE SPANNERS, 2 X EARLY SPANNERS, 7 X SPANNERS INCL NSWTD, 3 X VARIOUS SHIFTERS, 5 X BOOKS, ENAMEL BOILER, RAIL CARRIAGE AIR VENT, EARLY BRANDED SHINGLE SPLITTER, 3 X COPPER/BRASS EXTINGUISHERS & LAUREL CANISTER, 3 X NEWSPAPERS 1967 RE HAROLD HOLT, 1967 DAILY MIRROR RE LBJ IN AUST, 1966 MIRROR RE VIETNAM, 1975 MIRROR RE GOUGH WHITLAM, HEAVY SLEDGE & TOOTH CAST CAP, DEPT RAILWAYS CERTIFICATE OF MERIT & 7 X RAIL BOOKS & TAPES, 6 X FRAMED RAIL PRINTS, 5 X FRAMED RAIL PRINTS, VARIOUS PLANS FOR NSW RAIL & POSTERS, 2 X SETS RAIL REFRESHMENT ROOM SYRUP CONTAINERS & ALUMINIUM STRAW HOLDER (5), BAR DISPENSER, 2 X PRIMUS SOLDERING IRONS, 2 X PRIMUS STOVES, LARGE SWEDISH BLOW TORCH, PR SMALL JEWELLER'S TORCHES, EARLY DETROIT TORCH, 2 X BLOW TORCHES, RAIL SCENE TIN & OTHER, EARLY BOX & RAIL MEMORABILIA, VICTORIAN MAHOGANY COMPENDIUM WITH BRASS INLAY, EARLY RAIL WARNING LAMP, 3 X LAMPS, CLEAR FONT LAMP ON TALL BASE, RAIL HANDLE & 2 X CALICO BAGS, 2 X OIL CANS, EARLY COPPER KETTLE, 3 X CANISTERS INCL ENAMEL, RED RAILWAY LAMP, EARLY RAIL WALL PHONE, EPNS EPERGNE FROM MT VICTORIA REFRESHMENT ROOM 1934, 5 X RAIL T KEYS, 5 X RAIL T KEYS, QTY RAIL KEYS, COOMBS & WILSON TEN SHILLINGS NOTE SER NO 517881, 2 X BRASS NSW RAIL LOCKS,



the property shop

Phone 02 6372 2222  
[thepropertyshop.com.au](http://thepropertyshop.com.au)

# 2019 RAILWAY ANTIQUES & COLLECTABLES AUCTION

10.00am Saturday 2nd November 2019

58 Market Street, Mudgee

**Viewings: Friday 1st November from 4.30pm to 6.00pm & Saturday 2nd November 9.00am**

**A 10% buyer's premium inclusive of GST is applicable at this sale**

*Full catalogue available for download at [www.mudgeeauction.com.au](http://www.mudgeeauction.com.au)*

4 X NSW BRASS LOCKS, 13 X SOUVENIR RAIL SPOONS, 8 X COINS & RAIL TOKEN, OMEGA POCKET ATCH & CHAIN & POUCH, NSWGR POCKET WATCH & POUCH, NSW BRASS SEAT PLAQUE & NSW SIGNAL PLAQUE, NSW RAIL TAGS - KATOOMBA, W'ANG, GOULBURN, GOODSHEED & BRASS PLATE (5), 5 X BRASS RAIL PLAQUES, 3 X STATION MASTERS WHISTLES, 3 X STATION MASTERS WHISTLES, 3 X STATION MASTERS WHISTLES, 3 X BOXES PEN NIBS, BAKELITE MORSE CODE SENDER, C/I RAIL SIGNAL BOX SIGN, MUDGEE VIADUCT PHOTO, 6 X RAILWAY KEYS & SPANNER, ROLLED GOLD FOB CHAIN, VARIOUS RAIL BADGES, POSTER FOR MUDGEE RYLSTONE & RYLSTONE SIGNAL DIAGRAM, EARLY STATION WALL PHONE, METAL SIGN "CLOSE UP", METAL SIGN FOR "BELL", TIN SIGNS 1,3,6,7,8,9 , ENAMEL/TIN RAIL SIGN COOTAMUNDRA, ENAMEL/TIN RAIL SIGN BLAYNEY, ENAMEL/TIN RAIL SIGN FOR MOSS VALE, DOUBLE SIDED ENAMEL SIGN FOR WENTWORTH FALLS, DOUBLE SIDE ENAMEL SIGN FOR WOODFORD, ENAMEL SIGN FOR WELLINGTON, ENAMEL SIGN FOR BLAYNEY, ENAMEL SIGN FOR UNGARIE, ENAMEL SIGN FOR SPRINGWOOD, DOUBLE SIDE ENAMEL SIGN FOR BLACKHEATH ON BRACKET, DOUBLE SIDE ENAMEL SIGN, FOR WENTWORTH FALLS ON BRACKET, DOUBLE SIDE ENAMEL SIGN FOR KATOOMBA ON BRACKET, DOUBLE SIDE ENAMEL SIGN FOR FAULCONBRIDGE ON BRACKET, ART DECO HORN LAMP - NOTE: TAG BEFORE USE, ENAMEL SIGN FOR DR MORSE'S INDIAN ROOT PILLS EX BLACKHEATH, CAST RAIL CROSSING SIGN, PAINTED PANEL GREAT PACIFIC 1850 RAILWAYS, FORD MOTOR CO. TIN SIGN, C/I SIGN "THE CONSOLIDATED", 2 X DEMIJOHNS INCL SHARPE BROS & OTHER, FOWLER SYDNEY 1921 DEMIJOHN, SINGLE DRAWER STAND, 1926 WESTINGHOUSE SEWING MACHINE IN CABINET, GRINELL SPRINKLER SYSTEM SIGN & GAUGES FOR WORMALD BROS, WOODEN SIGN FOR BLACKHEATH LOOKOUT 1946, 4 X NSWTD CLAMPS, PR FIELD TELEPHONES & BELLS, 2 X BLACK BAKELITE DESK PHONES, BRITISH PHONE WITH WALL MOUNT, SWITCHBOARD PHONE EX STATION, EARLY ELECTRIC HEATER, HEARTH SURROUND, WALL PHONE, WALL PHONE, 2 X EARLY PARTY LINE PHONES, WALL PHONE, EARLY CRADLE MOUNT PHONE, SMALL EARLY WOOD HEATER , 2 X PHONES FROM FIRESTATION & S.M.OFFICE, 4 X DESK PHONES - BLACK, RED, 2 X YELLOW, BLACK DIAL PHONE, 2 X BLACK DIAL PHONES, SIEMENS EDISWAN WALL PHONE, G.E.C.RAIL PHONE, RARE SWITCH PHONE, PHONE REFERENCE X 2, SWITCHBOARD PHONE, 3 X OIL CANS, ALUMINIUM INK WELL & PEN HOLDER, 4 X OIL CANS, WATER TANK WITH BRASS TAP, 3 X OIL CANS, 2lb BALANCE SCALES, LEATHER BAG & CANISTER, OIL TIN, EARLY LEATHER CASE FOR POSTAL MERCHANDISE, SMALL LAMP WITH REFLECTOR, CROC SKIN GUARD'S BAG, 2 X BRASS RAIL PLAQUES, EARLY CARRIAGE LAMP, OIL POT, 5 X GRADUATED MEASURES, 2 X BOUND COLLECTIONS OF "THE EMPIRE" - 1873 -, 3 X OIL CANS, JEWELLER'S ANVIL, FUEL LAMP WITH REFLECTOR, FUEL CAN, HEAVY WATER CAN, REGA 1 GAL CAN, OIL CAN, DAIRYMASTER CREAM CAN, OIL CAN, GALVANISED SIEVE, DAIRYMASTER CREAM CAN, EARLY RAIL LAMP, 2 X CASES, 3 X STATION INDICATORS - COMO, B LE SANDS, WATERFALL, 3 X STATION INDICATORS - PUNCHBOWL, PENRITH, GRANVILLE, 2 X BANNERS - XPT & FREIGHT, LARGE QTY RAIL TOYS, STANDARD INSTRUMENT EX WALLERANG, CONTROL FRAME & INSTRUMENTS (3), PULLEYS, SWITCHES, SPANNER & CHALKBOARD (5), FOOT HEATER, CAST & ENAMEL JUICER, PR EARLY LAMPS, SIGN - TRAINS TODAY, WAX SEALER & BRASS INSTRUMENT EX W'WANG, NSWGR BRASS LOCK, PR NSWGR LOCKS, 3 X NSWTD BRASS LOCKS, 2 X NSWTS LOCKS, NSWGR & NSWTD LOCKS (2), 2 X NSW SRA LOCKS, 2 X LOCKS, NSWGR & NSWTD, NSWTD LOCK, TAP & DRINK HOLDER, TICKET STAMPER, PRESSURE GAUGE, CERTIFICATE, BOOKS, ARMBANDS (7), BRASS CARRIAGE RACK & 2 X PORTS, 3 X VICTORIAN DOOR KNOBS, WOOD SIGN "TELEPHONES", COLLECTION TICKETS, QTY RAIL REFERENCES, BRASS BRAKE GAUGE, 3 X BRASS KEYS, 7 X NSWGR WRENCHES MOUNTED ON BOARD, COWBELL & STRAP, 3 X TIMERS, 2 X ENAMEL NO'S 2,9, WHAT AM I?!, 3 X EARLY LOCKS, 2 X BRASS LOCKS, 7 X RAIL REFERENCES, 2 X CARRY BAGS, 2 X DESK PHONES, WALL MOUNT BELLS, PR FIELD PHONES, TIN SIGN FOR SOPER BROS KATOOMBA, WALL MOUNT STATION PHONE, ELCON FAN, SALTERS No 20T SCALES TO 200lb, 8 X PRINTS & PHOTOS, QTY EARLY PHONE PARTS, 2 X FOOTWARMERS, 3 X LAMPS, 2 X PRESSURE LAMPS, 2 X LAMPS, SIGN ON WOOD FOR BLUE MTS TOURS, 3 X LAMPS, 2 X LANTERNS PTC NSW, 2 X LANTERNS, TIN SIGN, 3 X COAL SHOVELS, TIN SIGN WOLRIGE & SONS BLACKHEATH, CAST SIGN SPRINKLER VALVE, PLATFORM SIGN ON TIN, PR RAIL LAMPS, PLASTIC SIGN FOR CIGARETTES, BATHS SIGN, CAST SIGN NO WAY, CAST SIGN NO WAY, SAFETY MATCHES SIGN, 3 X GUARDS FLAGS ON STAND (5), PR ENAMEL SIGNAL SIGNS, STREETS ICE CREAM SIGN, KODAK SIGN ON TIN, BOOKING OFFICE SIGN, RAIL LAMP, CAST SIGN ROLLING STOCK, CAST SHUNTING SIGN, PARCELS OFFICE SIGN, PR RAIL LAMPS, TIN SIGN FOR NSW GOVT RAILWAYS, BLOCK OF WOOD EX GEORGE ST SYDNEY, STREETS SIGN, 2 X RAIL BELTS & CAP, PILOT MANS UNIFORM COMPLETE, HEAVY CAST STOP SIGN, CAP & TIE, PTC CAP & TIE, SUN INSURANCE SIGN, ENAMEL SIGN IN FRAME,



the property shop

Phone 02 6372 2222  
[thepropertyshop.com.au](http://thepropertyshop.com.au)

# 2019 RAILWAY ANTIQUES & COLLECTABLES AUCTION

10.00am Saturday 2nd November 2019

58 Market Street, Mudgee

**Viewings: Friday 1st November from 4.30pm to 6.00pm & Saturday 2nd November 9.00am**

**A 10% buyer's premium inclusive of GST is applicable at this sale**

*Full catalogue available for download at [www.mudgeeauction.com.au](http://www.mudgeeauction.com.au)*

EARLY BOX LIGHT, EARLY BRASS BELL, SALTERS 100 lb SCALES, STOP/GO SIGN, STOP/GO SIGN, STOP/GO SIGN, CAST SIGN WENTWORTH FALLS, PR TRAIN WHISTLES, GUARDS LAMP (RED), RAIL CROSSING SIGN ON TIN, GUARD'S LAMP, GUARD'S LAMP, GUARD'S LAMP, STREETS ICE CREAM SIGN, PR RED LAMPS, 2 X CAST SIGNS, 2 X TIN CANS, 2 X TRAFFIC LAMPS, MORSE CODER, 2 X SIGNS, EXAMINERS LAMP, SIGNAL LAMP, CARRIAGE WATER HOLDER, PTC NSW GUARD'S LAMP, LARGE CARRIAGE LAMP, WOOD SIGN "WOMEN", 12 X REFRESHMENT ROOM PIECES, CONTOUR INDICATOR, 3 X SIGNS, LARGE LINE STOP/GO SIGN, PR CARRIAGE MIRRORS, LARGE CROSSING SIGN, LARGE CROSSING SIGN, CAST/ENAMEL TRACK SIGN, 2 X WEIGHTS 7lb & 14lb, CAST SIGN, CAST SIGN, 6 X LANTERNS, 2 X LANTERNS, 4 X LANTERNS, LARGE TRUNK & CONTENTS OF NEW UNIFORMS, LEATHER CASE & CONTENTS OF MATERIAL, RAIL WORKERS CARRY BOX, TRUNK & CONTENTS, LEATHER CASE & CONTENTS, LARGE PLATFORM LUGGAGE TROLLEY, SUNRISE MILK CAN, DAIRYMASTER MILK CAN, ARISTOCRAT POKER MACHINE WITH KEY, GRIFFITHS TEA SIGN, BOARD OF BOTTLE OPENERS, 2 X RAIL JACKETS, 4 X FREIGHT CARRIAGE STIRRUPS, SLEEPER BRACE & BIT, OIL ON BOARD & PRINT, STIRLING PAINT SIGN EX MT VICTORIA, COAL SCUTTLE, NSWTD DRUM, WILLOW ESKY & RAIL LUNCH BOX, RAIL WORKERS LUNCH BOX, FOOD SAFE, LARGE TRUNK & CONTENTS, SCALES, LARGE CARRIAGE AIR VENT, 2 X CARRIAGE BATH WINDOWS, TIN FOOD SAFE, TIN TRUNK & RAIL CONTENTS, S.M. ORANGE LUGGAGE TROLLEY, NSWTD SANITARY DRUM, TIN FOOD SAFE, TOOTHES KEG & BRASS TAP, FOOD SAFE, NEW TRAIN BANNER, 4 PIECE MAHOGANY ROBE ROLL TOP DESK, CHILD'S OAK HIGH CHAIR, MAXONOL RECORD PLAYER, TRAIN PRINT, AUST. COLONIES PRINT, VICTORIAN MAHOGANY FRAMED MIRROR, Q. ANNE MUSIC STAND GLASS DOOR BELOW BEVELLED MIRROR BACK, VICTORIAN MAHOGANY SIDEBORD - 3 DRAWERS ABOVE 4 DOORS & CARVED BACK, VICTORIAN WALNUT DRESSER - 3 DRAWERS ABOVE A SINGLE DRAWER, LLADRO FIGURE, CLOCK, GERMAN FIGURE, 2 X FIRE EXTINGUISHERS, GUARD'S CARRY BAG, BOARD OF TAPS (9), WICKER CASED DEMI-JOHN, IRON COT, LITHGOW ILLUMINATED SIGN, PINE DRESSER, PINE WASHSTAND & ENAMEL DISH, RAIL UNIFORM WITH CAP, CITY RAIL COAT, RAILWAY POCKET WATCH & SUPPORTING DOCUMENTS (to be sold after Lot 171), SINGER SEWING MACHINE IN TIMBER CABINET (NEEDS RESTORATION) (to be sold after Lot 426)



the property shop

Phone 02 6372 2222  
[thepropertyshop.com.au](http://thepropertyshop.com.au)



# 2019 RAILWAY ANTIQUES & COLLECTABLES AUCTION

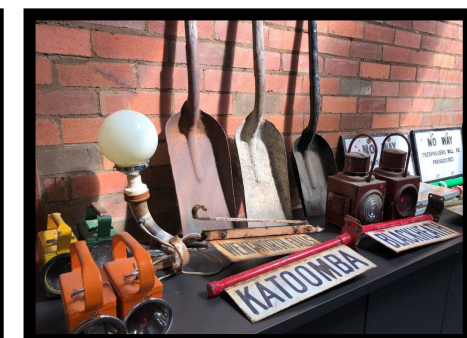
10.00am Saturday 2nd November 2019

58 Market Street, Mudgee

Viewings: Friday 1st November from 4.30pm to 6.00pm & Saturday 2nd November 9.00am

A 10% buyer's premium inclusive of GST is applicable at this sale

*Full catalogue available for download at [www.mudgeeauction.com.au](http://www.mudgeeauction.com.au)*





# 2019 RAILWAY ANTIQUES & COLLECTABLES AUCTION

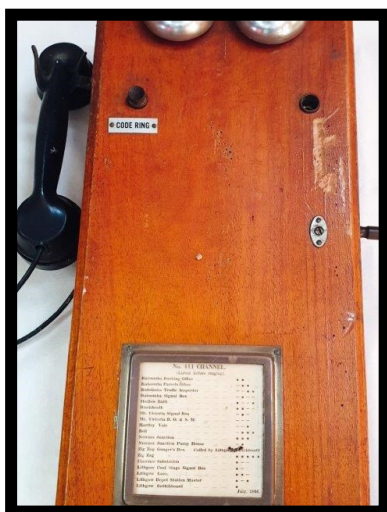
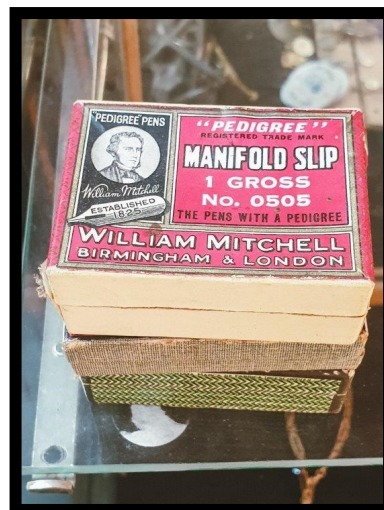
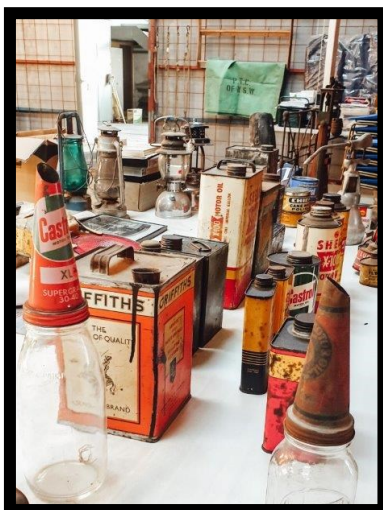
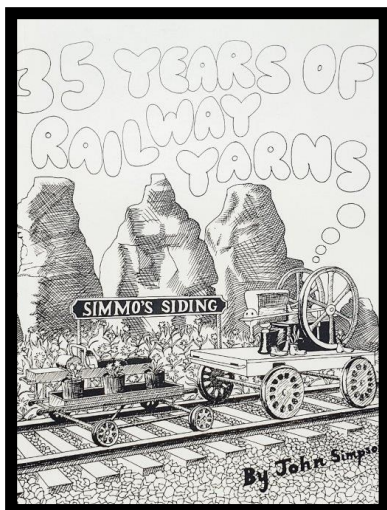
10.00am Saturday 2nd November 2019

58 Market Street, Mudgee

Viewings: Friday 1st November from 4.30pm to 6.00pm & Saturday 2nd November 9.00am

A 10% buyer's premium inclusive of GST is applicable at this sale

*Full catalogue available for download at [www.mudgeeauction.com.au](http://www.mudgeeauction.com.au)*





# 2019 RAILWAY ANTIQUES & COLLECTABLES AUCTION

10.00am Saturday 2nd November 2019

58 Market Street, Mudgee

Viewings: Friday 1st November from 4.30pm to 6.00pm & Saturday 2nd November 9.00am

A 10% buyer's premium inclusive of GST is applicable at this sale

*Full catalogue available for download at [www.mudgeeauction.com.au](http://www.mudgeeauction.com.au)*

