

may 2018 \$8.50 (incl GST)

AUSTRALIA

# marie claire

NZ \$9.40 (incl GST) marieclaire.com.au

## Dream HAIR

Expert tips &  
product picks

### DEADLY THIN

THE SECRET  
EATING DISORDER  
KILLING OUR GIRLS

### FROM PLAYBOY BABE TO POLITICS

MEET THE MODEL  
POISED TO BE  
PRESIDENT

## The Crown's CLAIRE FOY

What the Queen  
did next

## 101 WAYS TO WEAR COLOUR

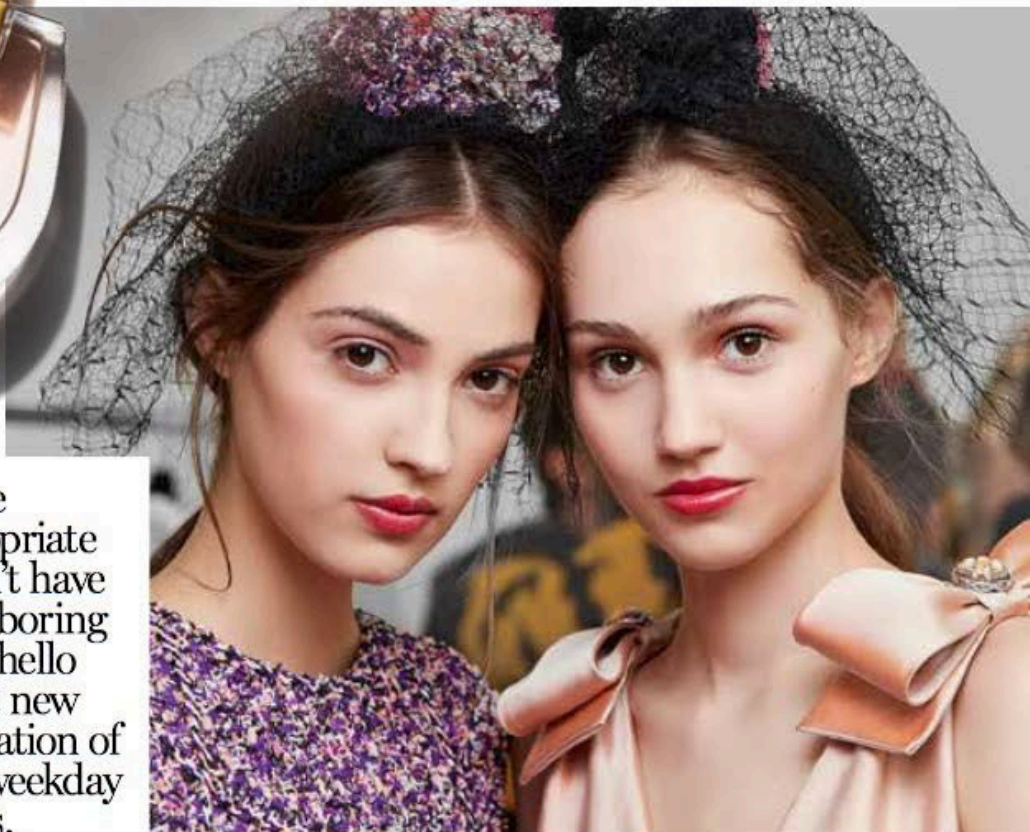
## LOVE YOUR WORK

How to create the  
career you want

# Fast style fixes

150 high-street hits  
under \$300





Office appropriate doesn't have to be boring – say hello to the new generation of chic weekday scents.

From top: **Chloé** Nomade EDP 75ml, \$180. **Kate Spade New York** Walk On Air EDP 100ml, \$140. **Estée Lauder** Modern Muse EDP 100ml, \$180.



# the edit

## COLOUR POP

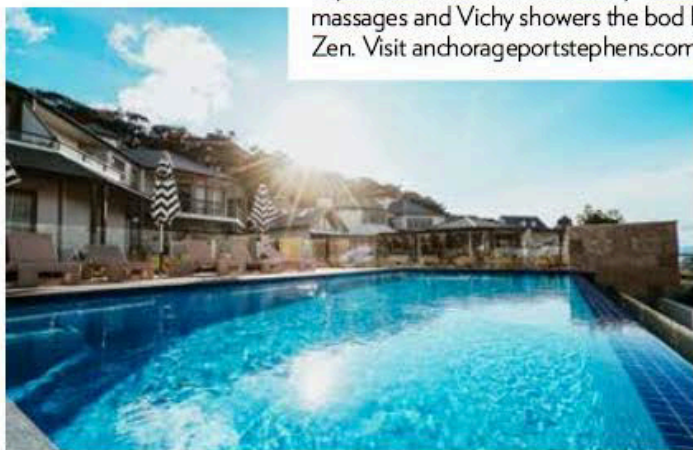
Songstress-turned-make-up-mogul Rihanna can do no wrong with her cosmetics range. These new matt lipsticks offer amazing colour payoff and an ultra-slim bullet for ultimate control. As with everything Fenty Beauty, you may have to get in line for these.

**Fenty Beauty** Mattemoiselle Plush Matte Lipstick in S1ngle, \$28



## MINI SPA BREAK

Spa Lucca, at newly renovated The Anchorage at Port Stephens in NSW, is an ideal way to get away from the humdrum of the city. Offering waterfront decadence, highly skilled therapists and next-level equipment, this destination spa is a haven for stressed-out urbanites. Book the Body Polish, Wrap and Spa Jet Capsule Experience, \$235, which blissfully scrubs, masks, massages and Vichy showers the bod back to Zen. Visit [anchorageportstephens.com.au](http://anchorageportstephens.com.au).



## COLD CASE

Cold plasma isn't regularly seen on skincare ingredients lists, but hear us out. This clever addition optimises the absorption of key nutrients to reduce puffiness and brighten tired eyes.

**Perricone MD** Cold Plasma+ Eye, \$160

