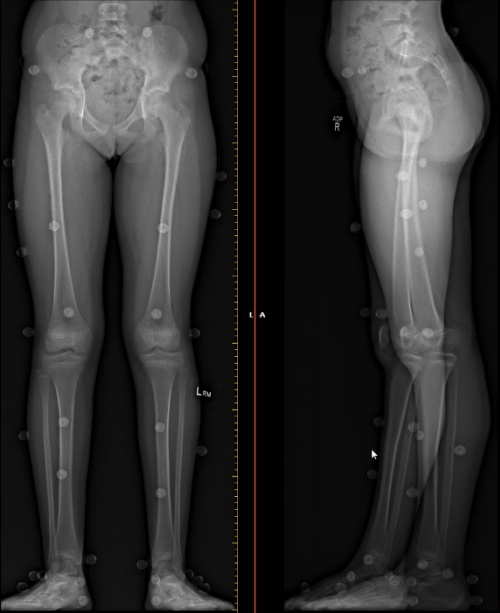



From models to decisions

Translating biomechanics research to the clinical setting



The rapid generation of patient-specific musculoskeletal models

- With low-dose bi-plane x-ray
- With the Musculoskeletal Atlas Project 

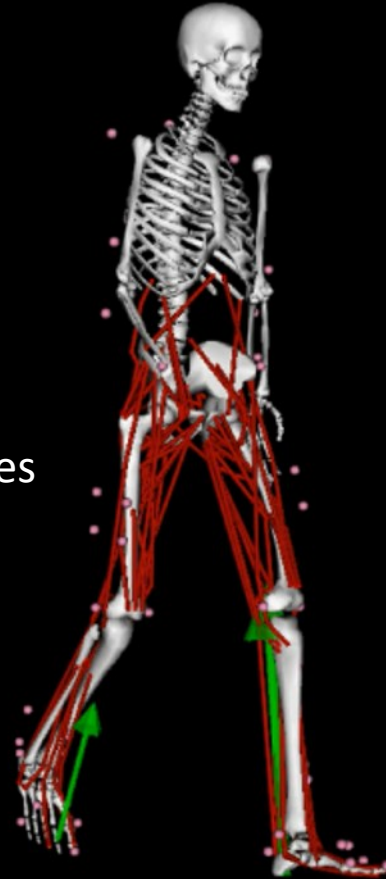
When to return to sport?

How to detect gluteal tendinopathy

Estimate the influence of knee kinematics on osteoarthritis treatment outcomes

Data-driven decision-making and design for ankle foot orthoses

New measurement devices



Presentations will be followed by panel discussions, bring your clinical problems and ideas

facilitated by

Morgan Sangeux

The Royal Children's Hospital

The Murdoch Childrens Research Institute

The University of Melbourne

Anna Murphy

Monash Health

Monash University

Deakin University