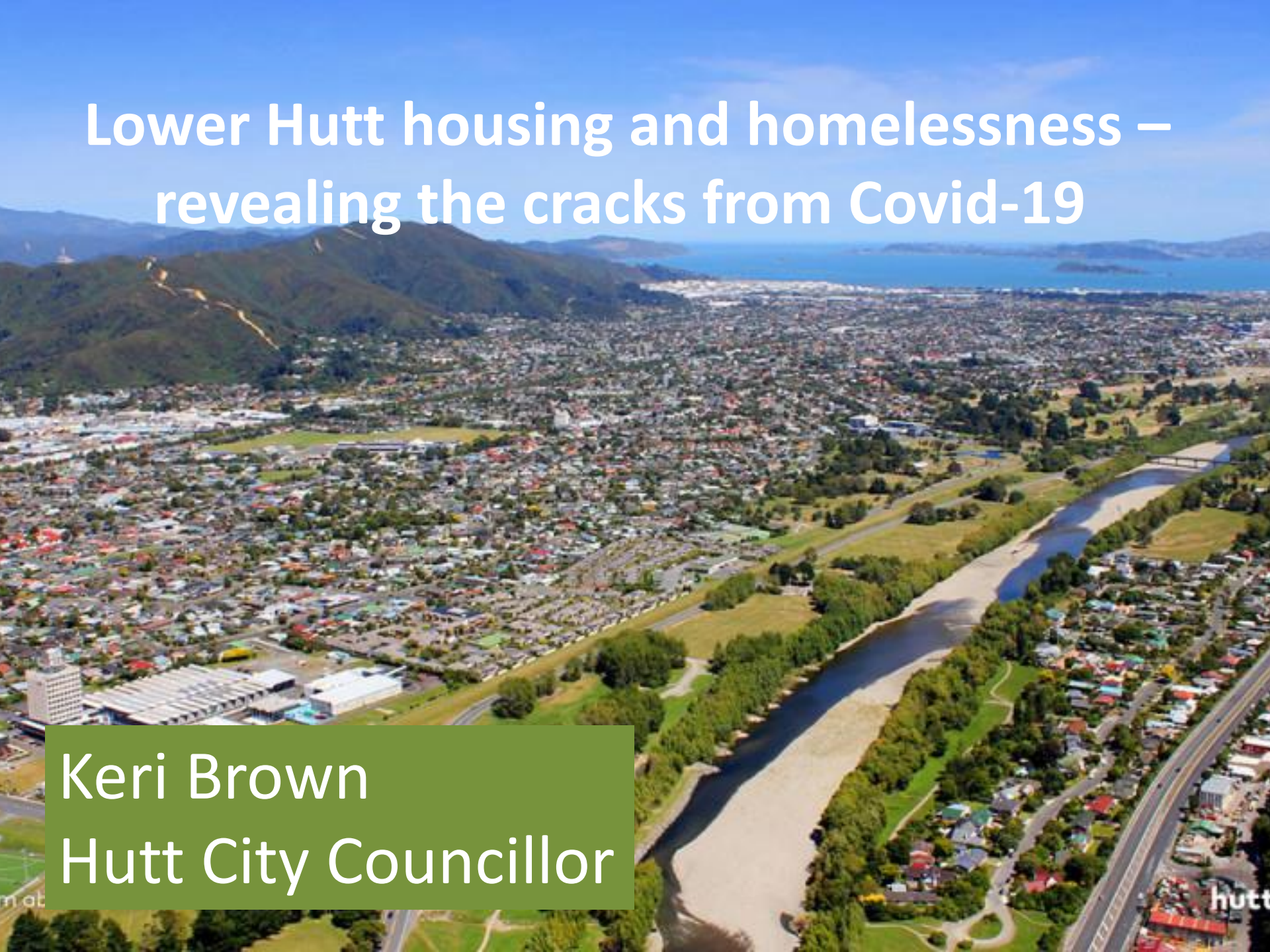


# Lower Hutt housing and homelessness – revealing the cracks from Covid-19

Keri Brown  
Hutt City Councillor



# Lower Hutt Landscape

- Population  
101,000
- 15% Maori
- 585 waiting list
- 51% Maori
- State Houses



NEW ZEALAND

# Homelessness in Lower Hutt an invisible crisis affecting everyone and increasing by the day

12 Jun, 2019 10:33am

🕒 7 minutes to read



Hutt City Council's committed to a homelessness strategy and action plan / Getty

NZ Herald

By: Emme McKay



---

An invisible crisis is happening in Lower Hutt.

Homelessness.

*“The thought of losing my children was maybe the one and only motivation that kept me going. I was able to carry on a routine for my children but my brain was overloaded. Anxiety would be another cost for me personally.”*



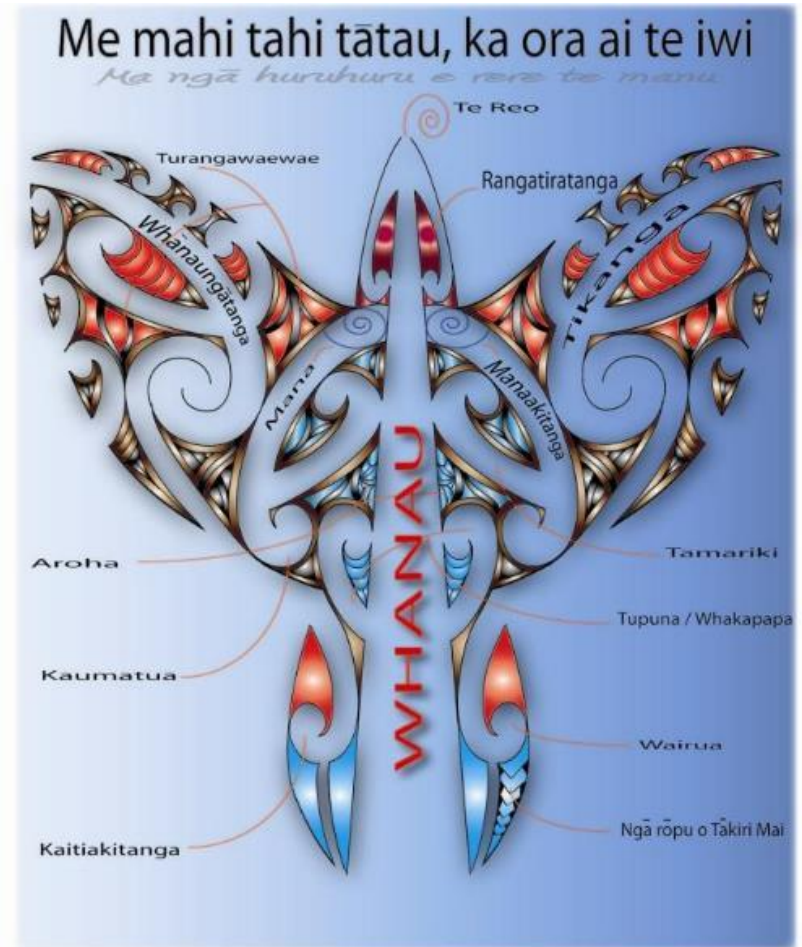
# Working with communities

## **Tākiri Mai te Ata Whānau Ora**

Collective delivering a homelessness prevention programme

**Community Law** Wellington and Hutt Valley providing housing advice and advocacy

**Tuatahi Centre** delivering access to private rented accommodation with support.



# Covid-19 – Housing

- Emergency
  - Deeper connection
- Housing supplies
  - Blankets and heating
  - Power support



# Covid-19 - Kai

- Kai Parcels
  - 11,400 parcels
  - 40,000 whanau
- Vouchers
  - 7,000
  - \$30,000



# Covid-19 – Partnerships

- Common Unity
  - 13,309 meals
  - 4,122 whanau
- MSD
  - 40,000 frozen cooked meals to whanau





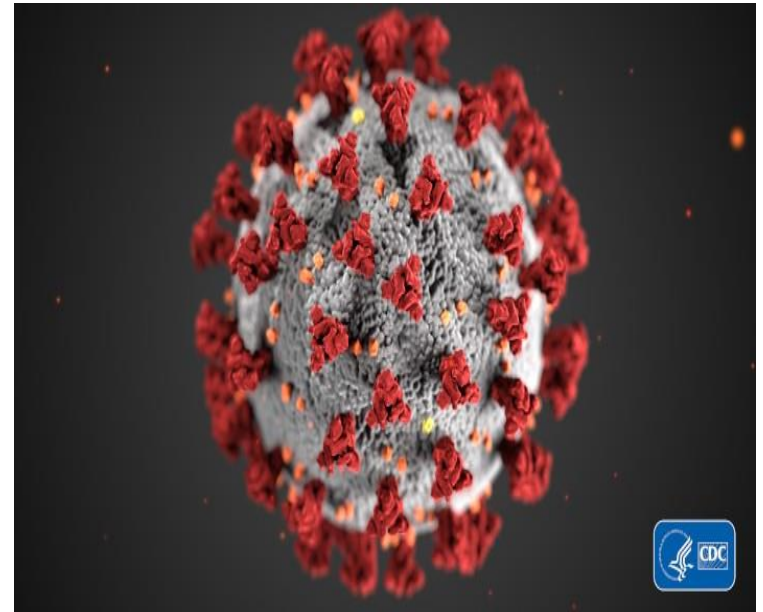
# Covid-19 - Health

- Intensive care for all
  - Flu injections
  - Prescriptions
  - Tests



# Covid-19 – the cracks

- Overcrowding
  - - Three generations
    - Living in fear
    - At risk situations
    - Children were sick
- Below Living Stds
  - Lock up / Sheds
  - High Needs
- Trust



# Future

- Trust and partner with community
- Expand homeless strategy in to long term plan
- Pataka
- Papakainga



# Ngā mihi Keri Brown

