



BPA BERTH 3 MD2 TO BERTH 5 CONNECTION

PORT OF BUNBURY
175KM SOUTH OF PERTH, WA

SPECIALIST ENGINEERING

PROJECT

Bunbury Port Authority Berth 3 MD2 to Berth 5 Connection

CLIENT

Bunbury Port Authority 0477 346 381
Kevan Wheeler

DURATEC CONTACT

Damian Ryan 0437 697 007

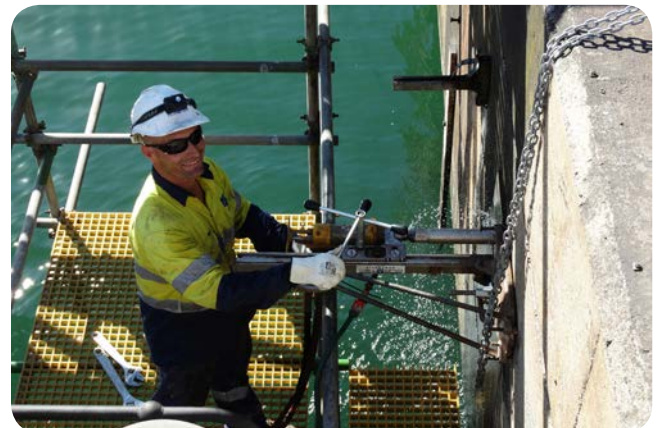
DESCRIPTION

Duratec was engaged by Bunbury Port Authority to supply and install 3 steel connection frames between berth 3 mooring dolphin 2 and berth 5 deck as part of anchor remediation activities on dolphin structures at berth 3, Bunbury inner harbour.

The scope included modifications to existing walkways and access platforms, detailed rebar scanning, coring and installation of anchor bolts, surface finish and installation of steel frame structures, installation of lead rubber bearings and plinths and installation of carbon fibre external reinforcement.

HIGHLIGHTS

- ▶ Duratec has been working on remediation projects for the Port of Bunbury since our inception in 2010, most notably the five year design and construct contract for the remediation of the outer harbour's berth's 1 and 2.
- ▶ Installation of 88 anchors for the connection frames with 2mm tolerance. All anchors were installed before the frames were positioned in place.
- ▶ Successfully move 2 x 5 tonne frames through the water with the aid of divers and parachute bags under berth 5.



IMAGES (FROM TOP TO BOTTOM)

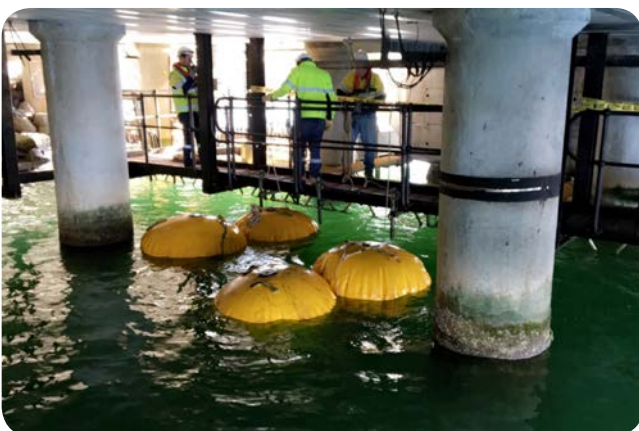
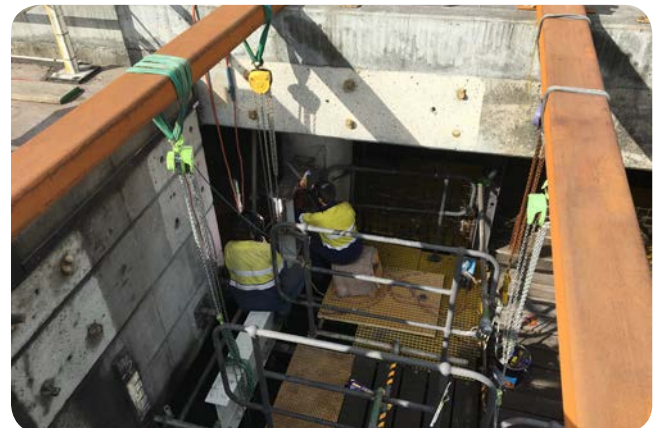
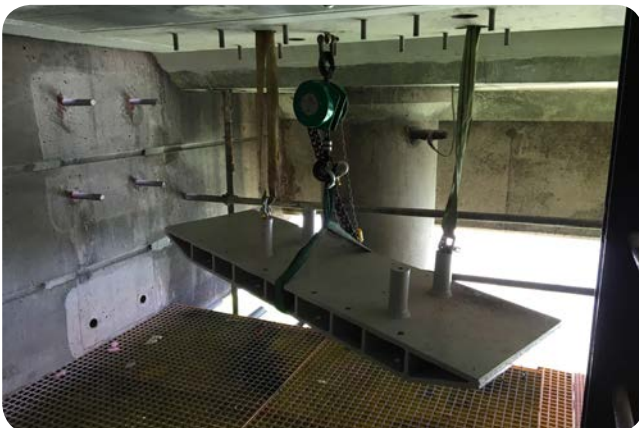
- ▶ Overview of the Port of Bunbury.
- ▶ Coring the side of mooring dolphin 2 for the installation of high tensile bars.
 - ▶ Concrete coring under berth 5 and into mooring dolphin 2.



BPA BERTH 3 MD2 TO BERTH 5 CONNECTION

PORT OF BUNBURY
175KM SOUTH OF PERTH, WA

SPECIALIST ENGINEERING



IMAGES (FROM TOP TO BOTTOM)

- ▶ Installing anchors using Hilti RE500 SD to the soffit of berth 5 for the installation of bracing frames.
- ▶ Lifting of connection frame 1's bearing plinth into position.
- ▶ Four parachute life buoys move connection frame 2 through the water under the direction of divers.

IMAGES (FROM TOP TO BOTTOM)

- ▶ Connection frame 2 and 4 lead rubber bearings being lifted out of the water with the aid of an overhead gantry.
 - ▶ Modification being undertaken to berth 5's walkway supports.
- ▶ Connection frame 3's lead rubber bearings being lifted into position.