



NELSON POINT TUG PEN REMEDIATION

PORT HEDLAND, WA

MAINTENANCE - BLAST & PAINT

PROJECT

Nelson Point Tug Pen Remediation

CLIENT

Rivtow Marine

Mike Fiege 0475 941 982

DURATEC CONTACT

Beno Gaberiel 0438 712 850

DESCRIPTION

Duratec was engaged by Rivtow Marine/Madson Mechanical to complete blasting and coating repair works to severely corroded areas on pontoon piles and cyclone pontoon piles, located at pontoons 11, 12, 13 and 14 within the Nelson Point tug pen in Port Hedland.

Due to the sensitive marine environment, an environmentally friendly abrasive blasting method was utilised - vacuum blasting.

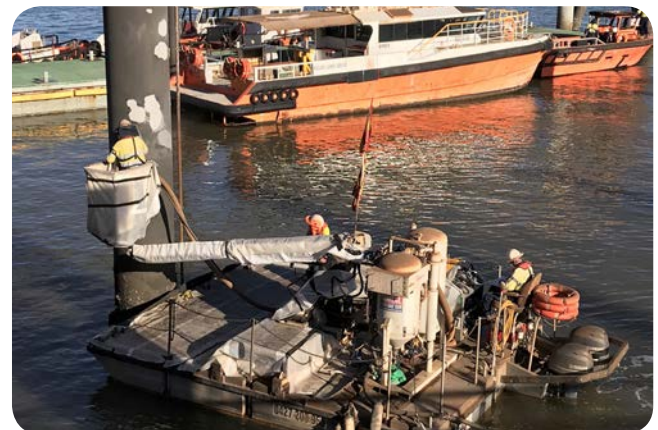
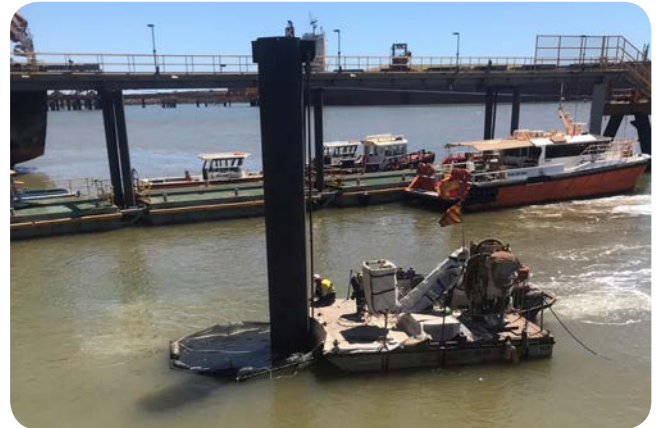
Used as an alternative to costly and time-consuming containment, vacuum blasting systems combine abrasive blasting and abrasive media recovery simultaneously.

The scope of work included:

- ▶ Installation of access equipment/access via boat for cyclone pontoon piles.
- ▶ Use of scaffold built on pontoon deck for works on pontoon mooring piles.
- ▶ Surface preparation using vacuum blast unit to achieve the required profile.
- ▶ Coating application to the surface prepped areas according to BHP's coating specification.

HIGHLIGHTS

- ▶ Works continued during live operation of tug pen with minimal operational disruption.
- ▶ Working on scaffold over water during tidal movement.



IMAGES (FROM TOP TO BOTTOM)

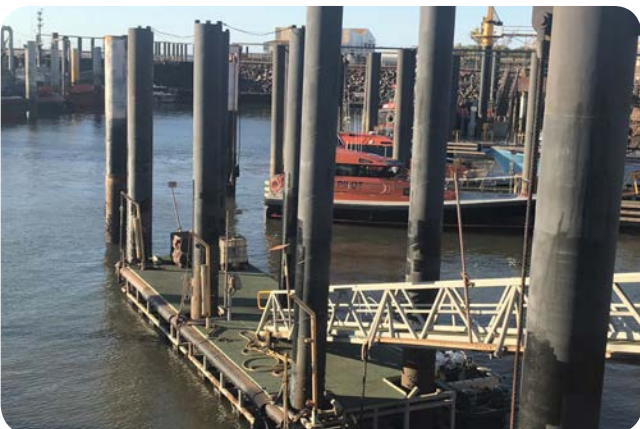
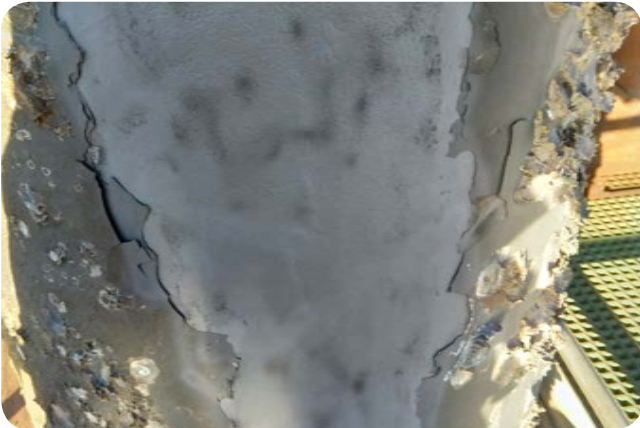
- ▶ Use of custom made recovery for falling paint debris.
 - ▶ Accessing top sections of piles from barge EWP.
- ▶ 100% dust free operation as a result of fully automated blasting and vacuum start/stop sequence.



NELSON POINT TUG PEN REMEDIATION

PORT HEDLAND, WA

MAINTENANCE - BLAST & PAINT



IMAGES (FROM TOP TO BOTTOM)

- ▶ Corrosion on piles.
- ▶ Scaffold over water for pontoon deck
- ▶ Pontoon 13 mooring piles completed.

IMAGES (FROM TOP TO BOTTOM)

- ▶ Vacuum blasting of corroded areas.
- ▶ Coating inline with tide from deck access.
- ▶ Pontoon 14 mooring piles completed.