



JACK UP BARGE - SELF LEVELING PLATFORM

KARRATHA, WA

MAINTENANCE - MARINE STRUCTURES

DURATEC CONTACT

Nigel Kroonstuiver 0477 177 014

DESCRIPTION

The vessel is a self elevating platform for service in estuarial waters, ports, rivers, dams and limited offshore areas where water depth and sea conditions permit.

There are four piles (spuds) located at the corners of the Jack Up Barge which can be hydraulically jacked up/down through the end barge modules to lift the barge clear of the water surface.

The barge is constructed from 11 individual hull modules and can be disassembled and road transported across the country minimizing mobilization costs.

General:

Type:	Jack Up Barge
Operator:	Duratec Limited
Survey:	AMSA Survey Class 2
Construction:	Steel
Built:	Netherlands
Road Transport:	20 standard trailers
Working Depth:	Up to 26m

Main Dimensions:

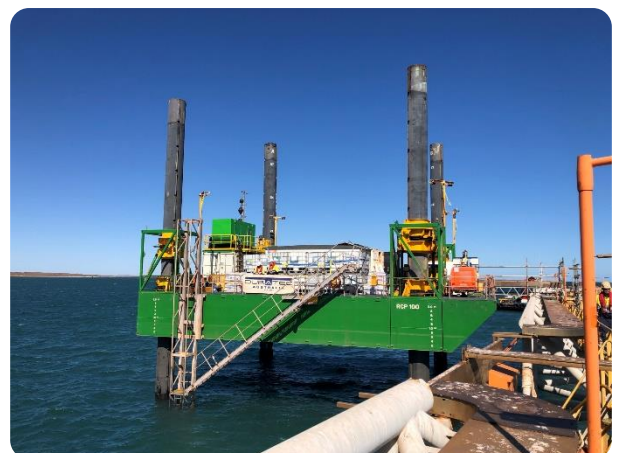
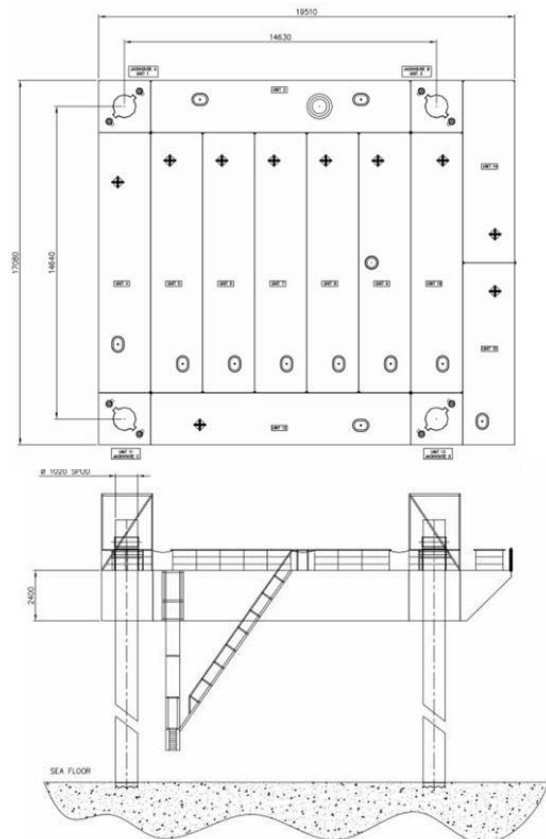
Length Overall:	19.51	meters
Beam:	17.08	meters
Depth:	2.4	meters
Draft:	0.8	meters
Displacement:	195	tonnes (unladen)

Jacking System

Jacking System:	Electronic over hydraulic
Jacking Rate:	10 meters per hour
Load Lift Capacity:	100 tonnes
Spud Length:	12, 24 or 36 meters
Hydraulic Power Unit:	HPU 1 x 150 kW

Features

- ⊙ Onboard site office
- ⊙ Remote controlled jacking operation
- ⊙ Remote controlled gangway access
- ⊙ Remote controlled certified man riding crane
- ⊙ Environmental spill containment equipment
- ⊙ Night lights
- ⊙ Road transportable



IMAGES (FROM TOP TO BOTTOM)

- ⊙ Plan view of Jack Up Barge.
- ⊙ Side elevation of Jack Up Barge
- ⊙ Mobilised Back Up Barge.