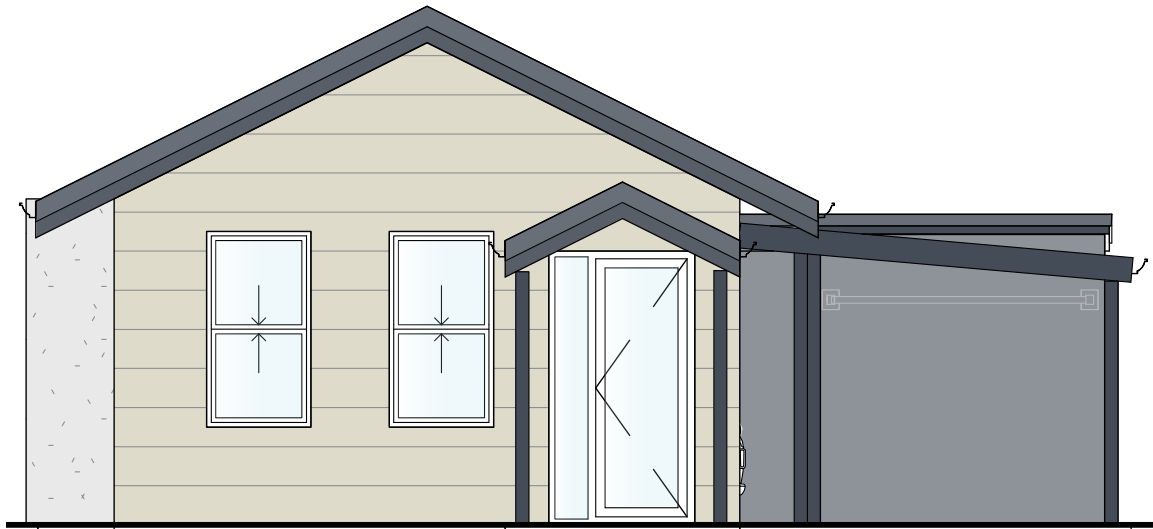


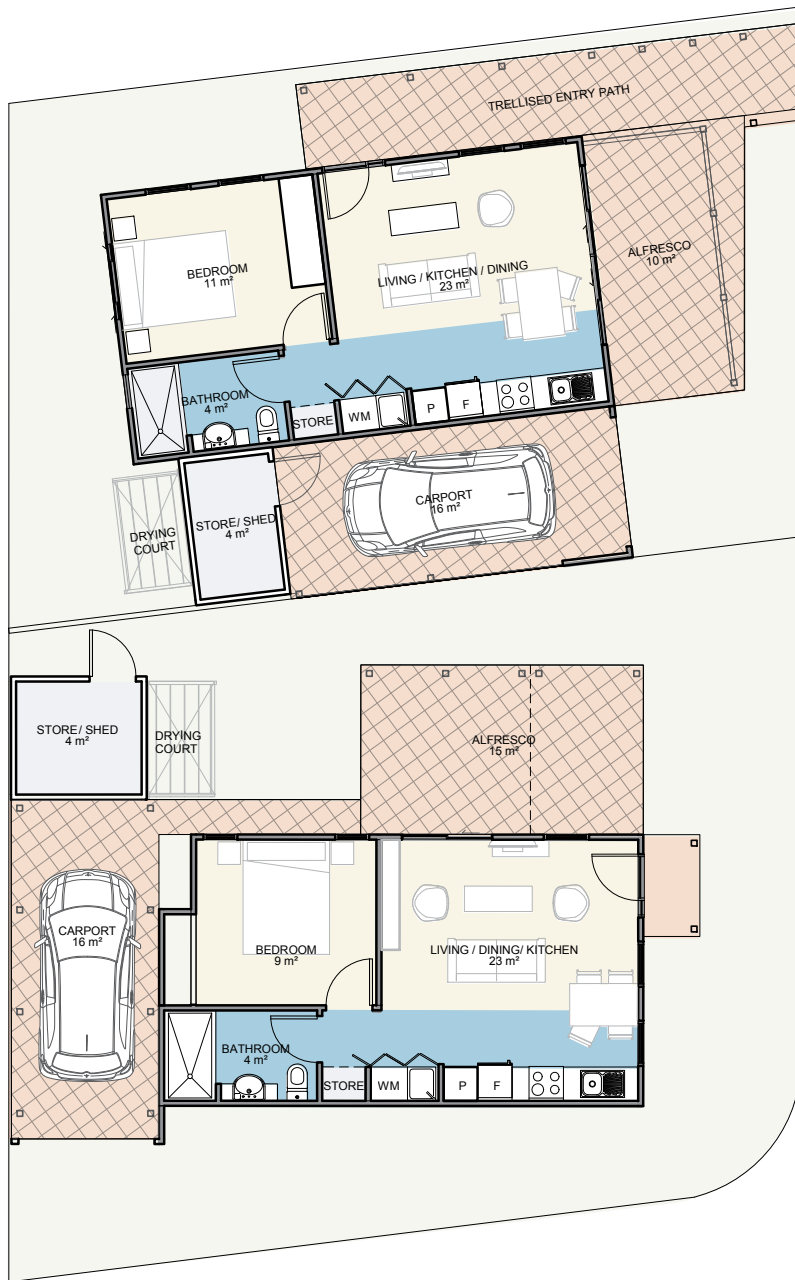
The Goshawk & Curlew



A place to call home

The simple duplex creates an easy living space in two separate homes; perfect for families. The compact homes require very little maintenance, with the front garden fully landscaped and maintained. Insulation to the external walls and roof make the homes energy efficient.

The Goshawk & Curlew



Curlew Specifications

House	41m ²
Alfresco	10m ²
Carport	16m ²
Store/shed	4m ²

Goshawk Specifications

House	41m ²
Alfresco	15m ²
Carport	16m ²
Store/shed	4m ²

Features

- Reverse cycle air conditioning;
- Built in robes to all bedrooms;
- Natural gas hotplate and fan forced electric oven;
- Carpet to all bedrooms;
- Vinyl planking to living areas;
- Flyscreens to all windows;
- Blinds to all windows;
- LED lighting throughout;
- Tiled splashback to the kitchen;
- Soft-close drawers throughout;
- Stone benchtops;
- Waterwise, fully landscaped and maintained front garden;
- Alfresco entertaining area;
- Foldaway clothes line; and
- Full insulation throughout.



1



1



1

Updated 11th August 2020

Disclaimer: Edenlife reserves the right to change the information in this publication at any time without notice.

For further information:

T: 08 9423 5131

E: live@edenlife.com.au

edenlife.com.au



 **EDENLIFE**
AUSTRALIND