

The Pelican



2



1.5



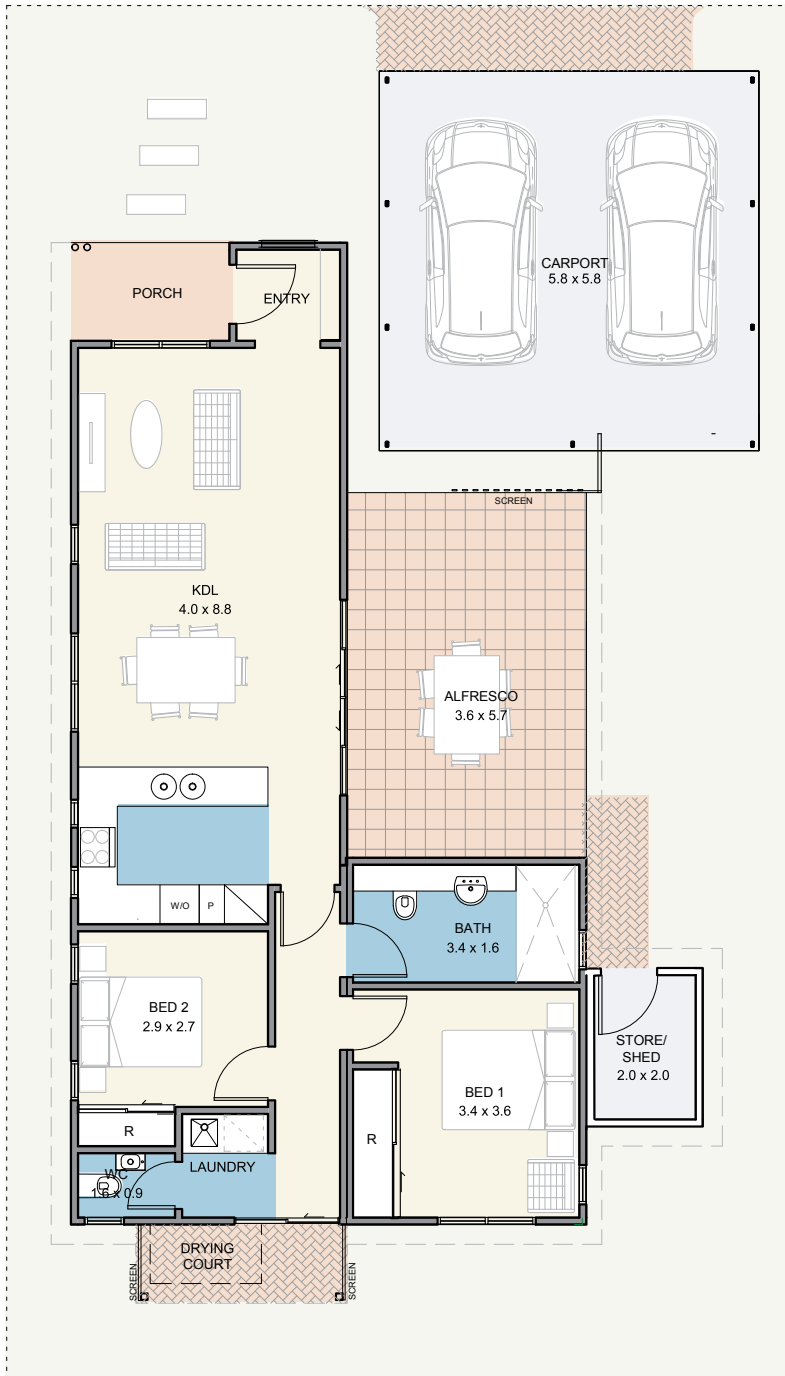
2



A place to call home

A perfect case of cosy but comfortable. The entertaining area with the alfresco, kitchen, dining and living area create a large space for residents to have friends and family over in a modern, liveable area. The separation of the bedrooms from the living space gives a feeling of size and privacy.

The Pelican



Specifications

House	80m ²
Alfresco	20m ²
Carport	34m ²
Store/shed	4m ²

Features

- Reverse cycle air conditioning;
- Built in robes to all bedrooms;
- Natural gas hotplate and fan forced electric oven;
- Carpet to all bedrooms;
- Vinyl planking to living areas;
- Flyscreens to all windows;
- Blinds to all windows;
- LED lighting throughout;
- Tiled splashback to the kitchen;
- Soft-close drawers throughout;
- Stone benchtops;
- Waterwise, fully landscaped and maintained front garden;
- Alfresco entertaining area;
- Foldaway clothes line; and
- Full insulation throughout.



Updated 11th August 2020
 Disclaimer: Edenlife reserves the right to change the information in this publication at any time without notice.

For further information:

T: 08 9423 5131
 E: live@edenlife.com.au

edenlife.com.au

