



FARMER TO FARMER TRADE
APPROVED

SOUTH EASTERN ZONE 2021
(SOUTHERN NEW SOUTH WALES)



VIXEN 
PBR

**AUSTRALIAN
PRIME HARD
(APH)**

ALTERNATIVE TO:

BECKOM[Ⓛ]

LRPB SPITFIRE[Ⓛ]

CONDO[Ⓛ]

SCEPTER[Ⓛ]

SUNTOP[Ⓛ]

**A CUNNING LEADER IN
THE MID-QUICK MATURING,
HARD WHEAT RACE!**

FOR MORE INFORMATION PLEASE CONTACT:

Katherine Munn

0436 801 161

kmunn@intergrain.com

VARIETY OVERVIEW

VIXEN[Ⓛ] is the highest yielding, quick-mid maturing (similar to LRPB Spitfire) Australian Prime Hard (APH) wheat in the South-Eastern region. VIXEN[Ⓛ] offers a significant yield advantage, on average, compared to Condo[Ⓛ] (approx. 12-16%*) in Southern NSW. VIXEN[Ⓛ] yields similarly to Scepter[Ⓛ], on average, based on NVT MET yield performance, however is ideally suited to sowing from mid-May onwards. With the amount of Scepter[Ⓛ] and Beekom[Ⓛ] grown in wheat programs, VIXEN[Ⓛ] provides a true varietal opportunity to spread flowering windows during critical spring stress periods.

In addition to the variety's stand-out yield performance it offers good stripe (MRMS), stem (MRMS) rust and yellow leaf spot (MRMS) resistance.

VIXEN[Ⓛ] has strong physical grain characteristics. It has an adequate grain size and hectolitre weight. It also has a short plant height, providing reduced stubble loads in high yielding environments.

VIXEN[Ⓛ] is available from local Seedclub members and resellers and is approved for farmer to farmer trade.

VARIETY AT A GLANCE



EXCEPTIONAL
YIELD



GOOD
YELLOW
LEAF SPOT
RESISTANCE
(MRMS)



GOOD
STRIPE RUST
RESISTANCE
(MRMS)



QUICK-MID
SPRING
MATURITY



GOOD
GRAIN SIZE

*Based on 2016-20 SA and VIC predicted NVT Long-term Main Season % Yield Performance, average of 2016-20 annual yield and yield environment results.

PLANT FEATURES

VARIETY	VIXEN [Ⓛ]	BECKOM [Ⓛ]	CONDO [Ⓛ]	SCEPTER [Ⓛ]	LRPB SPITFIRE [Ⓛ]	SUNTOP [Ⓛ]
Classification (South Eastern)	APH	AH	AH	AH	APH	APH
Maturity	Quick-Mid	Mid	Quick	Mid	Quick-Mid	Mid
Plant Height	Short	Short-Medium	Tall	Medium-Short	Tall	Tall
Lodging Tolerance	MR	MRMS	MRMS	MR	MRMS	MRMS

Source: 2021 NSW Crop Sowing Guide and InterGrain Wheat Breeding. Maturity based on mid-May planting

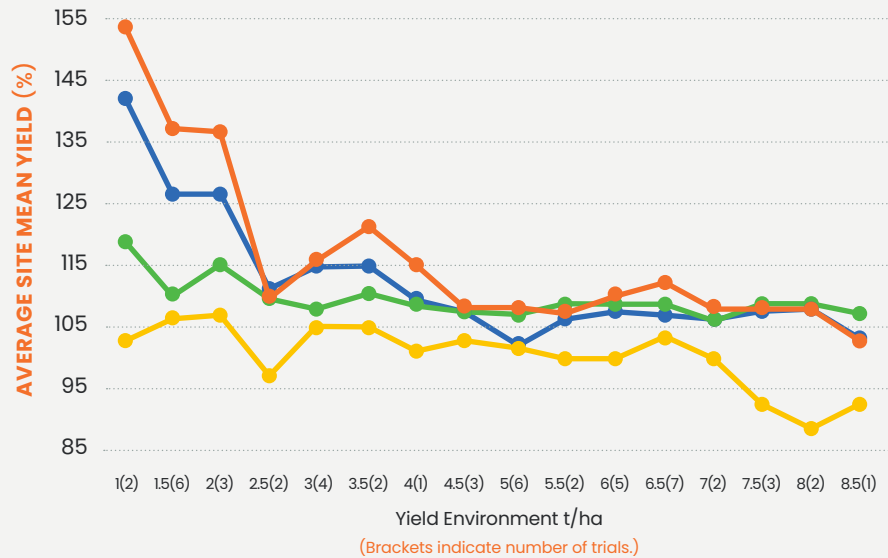
DISEASE RATINGS

VARIETY	VIXEN [Ⓛ]	BECKOM [Ⓛ]	CONDO [Ⓛ]	SCEPTER [Ⓛ]	LRPB SPITFIRE [Ⓛ]	SUNTOP [Ⓛ]
Stripe Rust	MRMS/SVSp	MRMS	MSS	MSS	MR	MRMS
Stem Rust	MRMS	MRMS	MR	MRMS	MR	MRMS
Leaf Rust	SVS	MSS	MRMS/SVS	MSS	S	MR
Yellow Leaf Spot	MRMS	MSS	MS	MRMS	MSS	MSS
Black Point	MSS	MRMS	MS	MS	MSS	MSS
CCN	MSS	R	MR	MRMS	MS	S
Septoria tritici	S	S	S	S	S	MSS

Source: 2020 NVT Pathology consensus disease ratings.

R = Resistant, RMR = Resistant to Moderately Resistant, MR = Moderately Resistant, MRMS = Moderately Resistant to Moderately Susceptible, MS = Moderately Susceptible, MSS = Moderately Susceptible to Susceptible, S = Susceptible, SVS = Susceptible to Very Susceptible, VS = Very Susceptible

YIELD PERFORMANCE – SOUTHERN NSW



2016–20 Southern NSW main season NVT predicted MET yield performance, represented by yield environment as a % of site mean yield

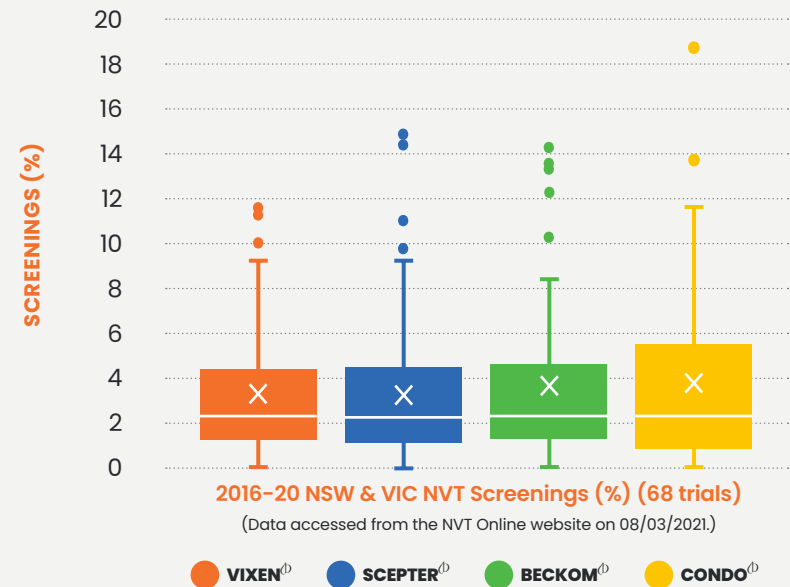
(Data accessed from the NVT Online website on 03/02/2021.)



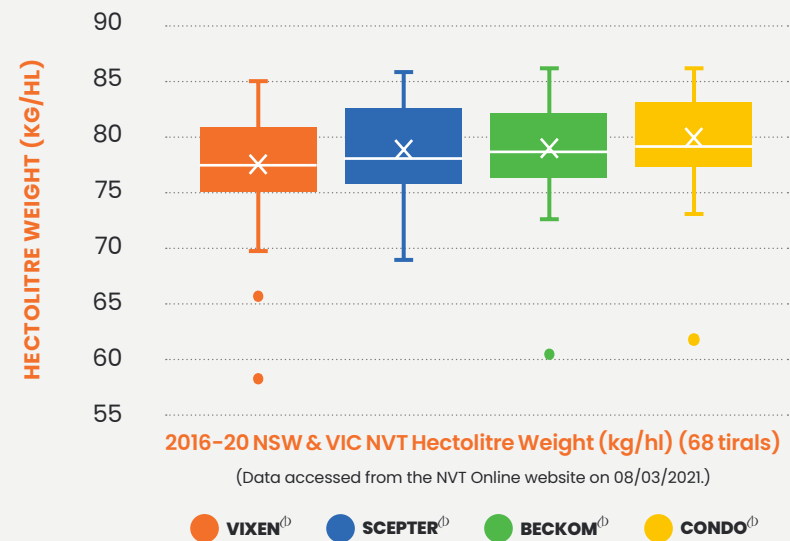
Vixen, Wallendbeen NSW, 2020

GRAIN QUALITY

SCREENINGS



HECTOLITRE WEIGHT



For more information please contact:

Katherine Munn



0436 801 161



kmunn@intergrain.com

PBR/EPR

VIXEN[®] is protected by Plant Breeder's Rights and is subject to an end point royalty of \$3.50/tonne GST Exclusive. VIXEN[®] is an InterGrain variety bred by Dr Dan Mullan and the InterGrain wheat breeding team.

Seed is available through farmer to farmer trade, your local reseller or Seedclub member.



intergrain.com

Disclaimer

All material contained or referred to in this publication is copyright. InterGrain is the owner of the copyright, unless otherwise indicated. Neither this publication nor any part of it may be reproduced in any way without the written consent of InterGrain. The information provided in this publication is considered true and correct at the time of printing although may be subject to change. This publication is intended as a general guide only for the purposes of providing a general understanding of InterGrain and its products. This publication should not be taken as detailed information regarding InterGrain or its products. InterGrain has taken all due care to ensure that the information provided is accurate at the time of publication; however, InterGrain does not guarantee or warrant the accuracy, completeness or currency of the information provided. Australian grain growers should regularly seek updated information and should rely on their own investigation and inquiries regarding the suitability of any product. Neither InterGrain, nor its affiliates, agents or employees, shall be held liable for any loss or damage whatsoever arising out of or in relation to the contents of the publication, whether such loss or damage arises from the negligence or misrepresentation or any act or omission of InterGrain or its agents or employees. InterGrain does not accept liability for loss or damaged, suffered or incurred as a result of acting on or refraining to act as a result of any material contained in this publication.