

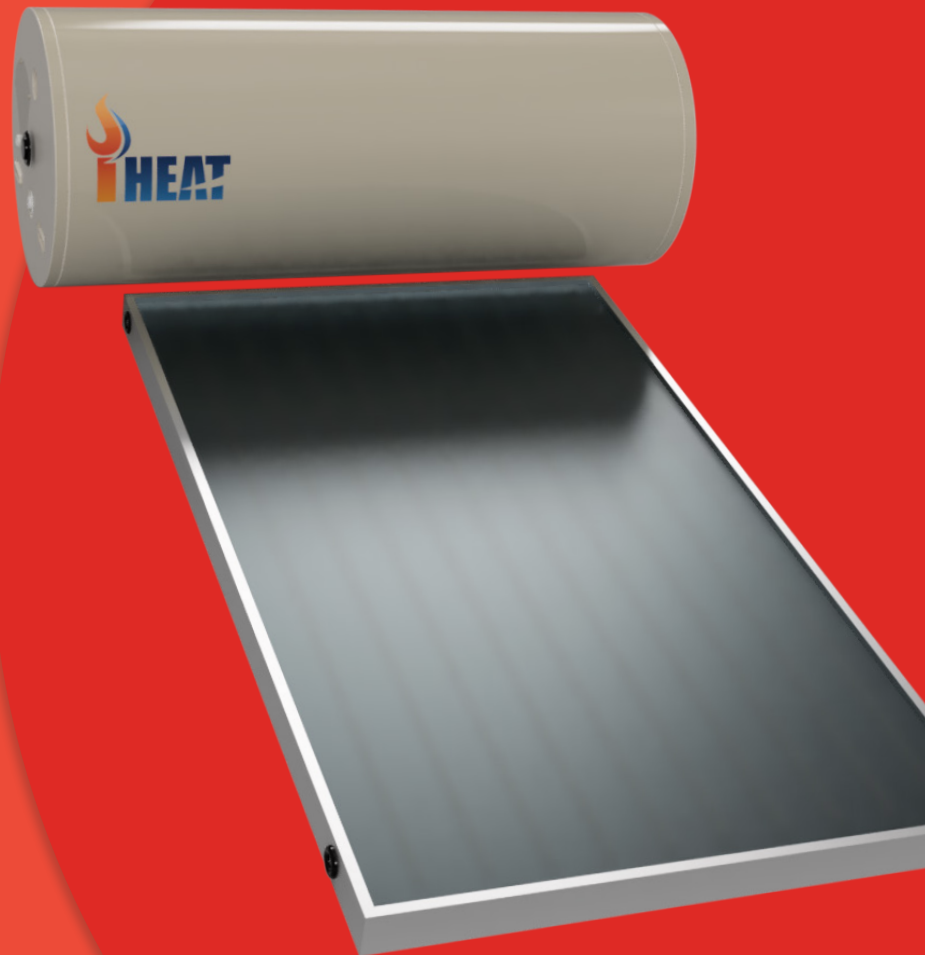
iHeat Roof Mount Solar Hot Water

**FOR COMMERCIAL AND
RESIDENTIAL INSTALLATIONS**



- 5 year warranty
- Electric boost
- Greater flexibility with tighter roof spaces
- Utilise 1 or 2 panel configurations
- Multiple options to suit your water needs

**Get a Koala
on your roof.**



EC11654



koala solar 08 9456 4763





Roof Mount Solar Hot Water with electric boost

Improve the energy rating
of your home and SAVE!

**Use the sun's unlimited FREE energy
to provide up to 80% of your hot water
heating needs.**

iHeat's roof mount solar hot water heaters are traditional close-coupled thermosiphon systems, combining roof mounted solar collectors and storage tanks, which are ideal for applications that are short of available ground space. Roof mount systems are highly efficient and use natural thermal convection to circulate hot water from the collectors to the tank without the need for electric pumps.



Many options to suit your
hot water demands



iHeat's roof mount systems utilise 1 or 2 panel configurations depending on hot water requirements:

- Single panel suited for small to medium hot water demand.
- The ideal size for areas exposed to high solar contribution or low hot water demand.
- Greater flexibility with tight roof spaces as collector can be mounted horizontal or landscape.
- Double panel suited for medium to high hot water demand.

Smarter Electric Booster

Electric boosted models feature an in-tank heating element that activates only when the stored water temperature drops below a set temperature minimising your energy costs to heat your water.



koala solar

08 9456 4763
info@koalasolar.com.au
koalasolar.com.au

Water tanks built for Australian conditions

Roof mount systems feature world class iHeat's water storage tanks in a 300 litre capacity. iHeat tanks have evolved from **decades of design refinement** and feature high quality construction, insulation and coating for a long service life in Australia's harsh conditions.

iHeat's roof mount open loop range offers maximum performance and solar contribution via direct heat transfer.

Warranty Information

Tanks & Collectors	5 yr parts and 1 yr labour
Electrical & Parts	1 yr parts and labour

Specifications for 300L Tank

System Dimensions	System lengths: Tank + Collector	2648mm
	Width (Tank only)	1539mm
	Diameter (Tank only)	648mm
	Weight (Tank only)	97kG
Auxiliary Boost Options	Electric 2.4 (kW) Element	
System Type	Open Loop	

Why choose iHeat hot water systems

- Reduces water heating costs by up to 90%
- Storage tanks and collectors manufactured to AS/NZ ISO 9001:2008 quality standards
- Nation-wide sales and service networks

Other quality iHeat products include:

- Ground Mount solar hot water systems
- Evacuated tube solar hot water systems
- Continuous flow gas water heaters
- Solar power systems
- Heat pumps

Collector Specifications	Width (mm)	Length (mm)	Depth (mm)	Weight (kg)	Aperture Area (m2)
CSG25 x 1	1247	2000	95	46	2.5
CSG20 x 2	1000	2000	95	37	2.02



koala solar

08 9456 4763
info@koalasolar.com.au
koalasolar.com.au