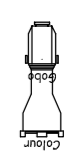
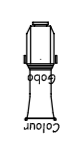
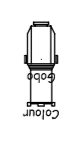
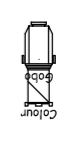
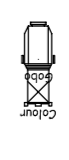
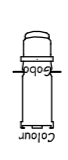
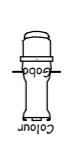




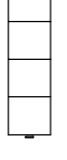
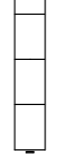
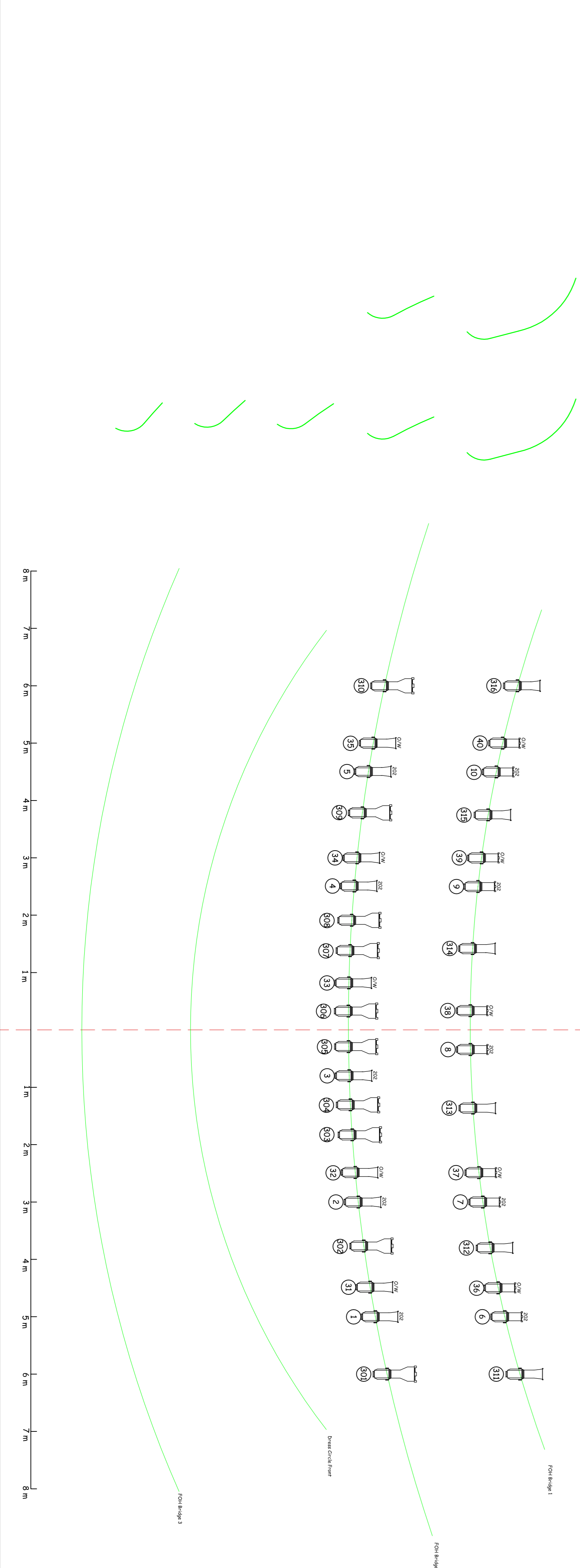
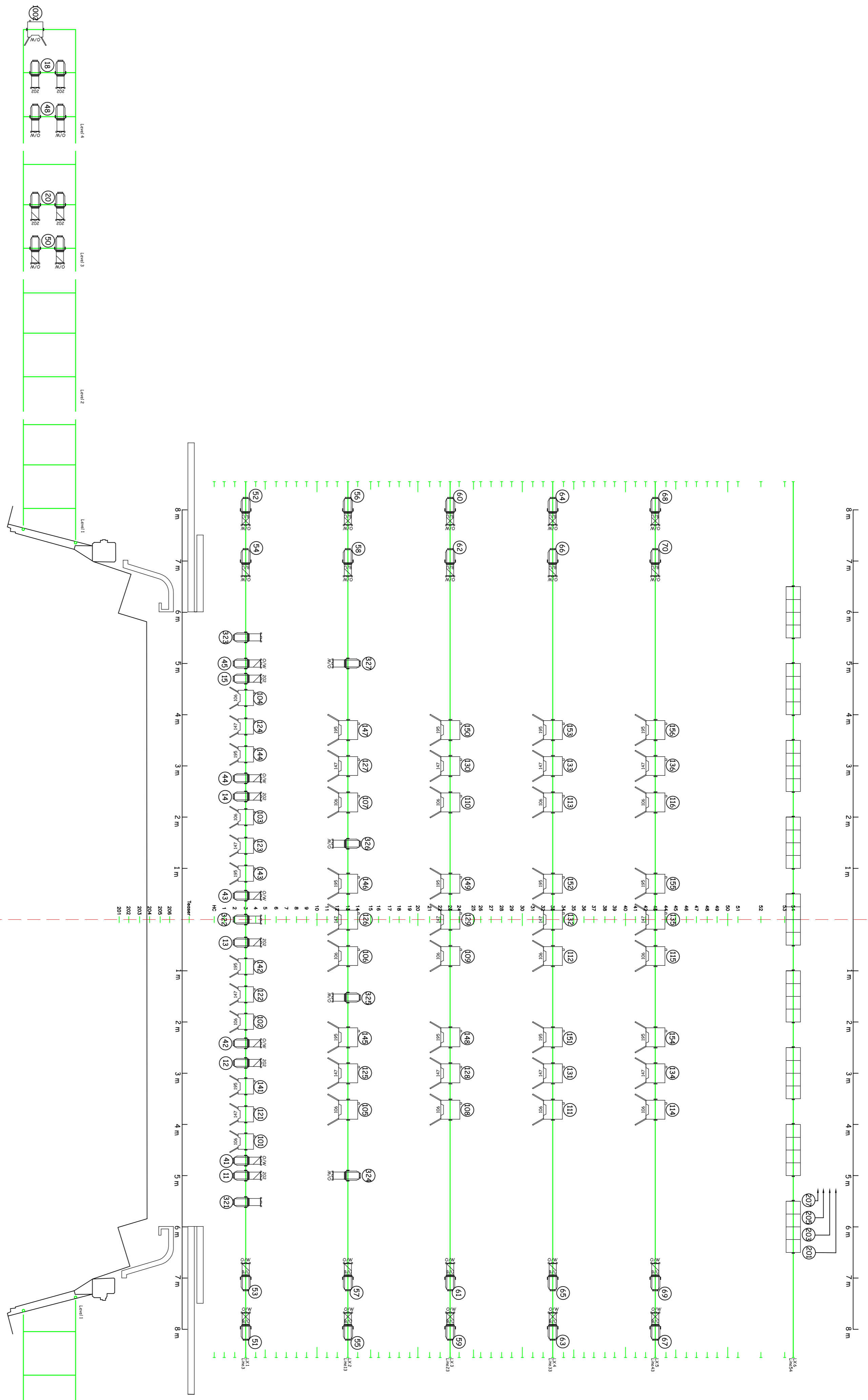


Key

	Source 4 10	10
	Source 4 14	16
	Source 4 19	25
	Source 4 26	28
	Source 4 36	10
	Pacific 12/28	0
	Pacific 23/50	0
	Arena 2k F	36
	Arena 2k PC	0
	Selecon 1.2k F	14
	Selecon 1.2k PC	0
	Iris 4	9
	Arena Groundrow	9



Roslyn Packer Theatre
Walsh Bay

VENUE : Sydney Theatre

VIEW : LX Plan

COMPANY : Standard Rig

PRODUCTION : Standard Rig

DIRECTOR :

DESIGNER :

LX DESIGNER : Andrew Tompkins

Drawn By : AT
Last Modified : 11/2/2009
Scale: 1:50 @ A1

Base Drawing by
AT
Vacant
2009/02