



AUSTRALIAN
WAR MEMORIAL

Series Number: AWM26

Control Symbol: 127/8

DPI: 300

This item is provided for private research purposes only. If you desire to use this material for publication or any other purpose you may only do so with the permission of the copyright holder.

Scan date: 17/01/2017

Printed on acid free paper

ACCESS STATUS

OPEN

File No.

WAR MUSEUM LIBRARY.

RECORD FILE OF PAPERS.

NOT TO BE TAKEN AWAY.

Subject 4.6. SOMME WINTER. 23 DEC-8 JAN. 1917.

[illegible]

H.Q. 2nd AUSTRALIAN DIVISIONAL ENGINEERS.

SAM/CMS.

Confidential,

Saturday 23rd December 1916.

6th Field Company Australian Engineers.

2-Du

RIBEMONT.

Lieut. RENSHAW and 8 other ranks moved to
QUARRY SIDING to take over CIRCUIT WORK from
5th Field Company.

7th Field Company Australian Engineers.

BAZENTIN.
S.15.d.2.0.

See Works Report as Appendix to War Diary.

2nd Australian Pioneer Battalion.

LONGUEVAL.

See 31st.

SAM/CMS.

Confidential,

Sunday 24th December 1916.

6th Field Company Australian Engineers. *g. Du*

QUARRY SIDING. Remainder of Company less Lieut. STRADWICK's
party moved to QUARRY SIDING.

7th Field Company Australian Engineers.

BAZENTIN.

See Works Report as Appndix to War

S.15.d.2.0. Diary.

Transport less 6 riding horses and 1 pontoon
wagon and team moved to Divisional Lines at
MEAULTE. Balance of unit moved to 15th Field
Company's camp at WATERLOT FARM and took over works
from that unit.

Transport moved from MEAULTE to 15th Field
Company's horse lines at position on
BERNAFAY-LONGUEVAL ROAD, north of BERNAFAY ROAD.

2nd Australian Pioneer Battalion.

LONGUEVAL.

See 31st.

SAM/CMS.

Confidential,

Monday 25th December 1916.

6th Field Company Australian Engineers. *2 Dn*

RIBEMONT.

Carried on with DECAUVILLE RAILWAY work.
(3 sections) Circuit work (1 section).

7th Field Company Australian Engineers.

BAZENTIN.

See Works Report as Appendix to War
S.15.d.2.0. Diary.

End Australian Pioneer Battalion.

LONGUEVAL.

See 31st.

SAM/CMS.

Confidential,

Tuesday 26th December 1916.

6th Field Company Australian Engineers.

2nd Div

RIBEMONT.

Captain Lawson detached for duty with
Divisional Artillery.

7th Field Company Australian Engineers.

BAZENTIN.
S.15.d.2.0.

See Works Report as Appendix to War Diary.

2nd Australian Pioneer Battalion.

LONGUEVAL.

See 31st.

SAM/CMS.

Confidential,

Wednesday 27th December 1916.

6th Field Company Australian Engineers. 2 Dm

RIBEMONT. Carried on with DECAUVILLE RAILWAY work (3 sections) Circuit work (1 section).

7th Field Company Australian Engineers.

BAZENTIN. See Works Report as Appendix to War Diary.
S.15.d.2.0.

2nd Australian Pioneer Battalion.

LONGUEVAL. See 31st.

SAM/CMS.

Confidential,

Thursday 28th December 1916.

6th Field Company Australian Engineers.

2 Dec

RIBEMONT.

Carried on with DECAUVILLE RAILWAY
work (3 sections) Circuit work (1 section).

7th Field Company Australian Engineers.

BAZENTIN.
S.15.d.2.0.

See Works Report as Appendix to War Diary.

2nd Australian Pioneer Battalion.

LONGUEVAL.

See 31st.

SAM/CMS.

Confidential,

Friday 29th December 1916.

6th Field Company Australian Engineers. 2 Du

RIBEMONT.

Carried on with DECAUVILLE RAILWAY work
(3 sections) Circuit work (1 section).

7th Field Company Australian Engineers.

BAZENTIN.
S.15.d.2.0.

See Works Report as Appendix to War Diary.

2nd Australian Pioneer Battalion.

LONGUEVAL.

See 31st.

SAM/CMS.

Confidential,

Saturday 30th December 1916.

6th Field Company Australian Engineers.

2 Div

RIBEMONT. Carried on with DECAUVILLE RAILWAY work
(3 sections) Circuit work (1 section).

7th Field Company Australian Engineers.

BAZENTIN. See Works Reports as Appendix to War
S.15.d.2.0. Diary.

2nd Australian Pioneer Battalion.

LONGUEVAL. See 31st.

SAM/CMS.

Confidential,

Sunday 31st December 1916.

6th Field Company Australian Engineers. 2-Du

RIBEMONT.

Carried on with DECAUVILLE RAILWAY work
(3 sections) Circuit work (1 section).

7th Field Company Australian Engineers.

BAZENTIN.

See Works Reports as Appendix to War
S.15.d.2.0. Diary.

2nd Australian Pioneer Battalion.

LONGUEVAL.

During the month "A" Company have been
Employed on tunnelling on shafts north of LONGUEVAL &
FLERS ROADS, building strong points, constructing
dugouts and timberingsame. One platoon of "B"
Company moved to GINCHY and the whole commenced
construction of new road to be used for carrying
ammunition to artillery and sleepers were laid.
"C" & "D" Companies working on maintenance of
LONGUEVAL Road, unloading ~~material~~ from lorries,
spreading same, filling shell holes, scraping mud
from roads and timbering drains.

Sunday 31st December 1916.

2nd Australian Divisional Signal Company.

Relieved by Imperial Troops about 6th, entrained at QUARRIES^{2.}
Siding, detrained at AVELOY, marched to RIBEMONT. Resting
and training. About 20th moved up to WARTERLOT FARM and
relieved a Bde. of 3rd Division.

SAI/PL.

Confidential.

Tuesday 2nd January 19.

6th Field Company Australian Engineers.

SOME.

As for 19th.

2nd BN Engineers

SAM/PP

Confidential.

Wednesday, 3rd January 17.

6th Field Company Australian Engineers.

SOME.

As for 19th.

2nd Down Engrs

SAM/WH.

Confidential.

Thursday 4th January 17.

6th Field Company Australian Engineers.

SOME.

As for 19th.

2nd Wn Engrs

SAM/PH.

Confidential.

Friday 5th January 1917.

6th Field Company Australian Engineers.

SOMME.

As for 19th.

2nd Lt. Egan

EAM/PL.

Confidential.

Saturday 6th January 1917.

9th Field Company Australian Engineers.

SOME.

As for 19th.

2nd Div Engineers

SAE/11.

Confidential.

Sunday 7th January 17.

6th Field Company Australian Engineers.

SOME.

As for 19th.

2nd Div Engineer

f

SAM/FR.

Confidential.

Monday 8th January 17.

8th Field Company Australian Engineers.

SOME.

As for 19th.

2 not known Engineers

7th Field Company Australian Engineers.

SINCHY
WATERLOT
FARM.

Dugout in Camp completely wrecked by shellfire, causing casualties 5 killed, 4 wounded.

l

C O P Y.

20110
B/100
H.Q., Div. Engineers,
2nd Aust. Div.
E1/337.

G/2nd Aust. Div.

Reference the Vth Pioneers.

1. This unit has now been at work in the SOMME Area continuously since October 22nd; 63 days in all, of which 46 days have been front line work, the balance being spent on the LONGUEVAL - BERNAFAY.Rd.
2. Recently they have been employed on the 4 C.T's. through the front ridge. This has been very trying and arduous work and the O.C., 5th Pioneers reports that the condition of his men is very low and that they would be quite unable to respond to any special call such as might be demanded by an action.
3. I strongly recommend that, in view of the above facts, and also in view of the increased strength of the infantry in the forward sectors, the 5th Pioneers shall be employed on the LONGUEVAL - GUILLEMONT Road work and that the C.T's. shall be carried on by infantry labour under sapper supervision.
4. In making this recommendation, I wish it to be clearly understood that it is made not out of any false sympathy for a tired battalion, but entirely because I am of opinion that the greatest amount of work will be done for the benefit of the division occupying the right sector.

25-12-16.

(sgd.) A. B. CAREY, Lt.Col.,
C.R.E., 2nd Aust. Div.

G/2nd Aust Div

C.R.E.



Reference to Vth Pioneer

25/12/16

1. This unit has now been at work in the Somme area continuously since October 22nd, 63 days in all of which 46 days have been front line work, the balance being spent on the Longueval - Bernafay Road.
2. Recently they have been employed on the C.T.s through the front ridge. This has been very trying & arduous work, & the O/C Vth Pioneer reports that the condition of his men is very low & that they would be quite unable to respond to any special call such as might be demanded by an action.
3. I strongly recommend that, in view of the above facts, & also in view of the increased strength of the Infantry in the forward sectors, the Vth Pioneer shall be employed on the Longueval Girdle road work, & that the C.T.s shall be carried on by Infantry labour under Sapper supervision.

4. In making this recommendation, I wish it to be clearly understood that it is made not out of any false sympathy for a tired battalion, but entirely because I am of opinion that the greatest amount of work will be done for the benefit of the Division occupying the right sector.

25/12/16

Asst Col

C.R.E.

2nd Aust Div

It was noticed that a great number of men were living in huts in the vicinity of the 2nd Australian Division. It was found that these men were working on the road and it was feared that they would be captured by the enemy. It was suggested that the 2nd Australian Division should be ordered to capture these men and to bring them back to the rear. This was done and the men were brought back to the rear. They were then sent to the 2nd Australian Division and were put to work on the road. This was done and the men were brought back to the rear. They were then sent to the 2nd Australian Division and were put to work on the road.

2nd and 3rd



I would suggest employment of

balance of the Pioneers as under.

- 1 Platoon for 67 to assist Tunneling Coy
- Remainder on Longueval-Guillaumont Road.

This gives Pioneer distribution as under:-

- 1 Battalion on Front ridge
- 2 Communication Trenches
- 1 Battalion less 2 platoons on Longueval-Guillaumont Road
- 2 Platoons on Tunneling

Do you concur, please?

24/12/16 AMT [signature]
C.R.E.

Spoke detail Pioneers for C.T.s
C.R.E. instructed to

AMT-
25/12/16

G.

2 New Engines

FLCS.

Confidential.

Thursday, 9th May 1918.

2nd Australian Division.

Admins. Staff. ALLONVILLE. Reliefs. The 6th Bde. relieved the 10th Bde. in the line.

It was noticed that a great number of men were living in billets in FRANVILLERS, LA HOUSSEY, QUERRIEU and PONT NOYELLES, within easy shelling range of the enemy, and it was feared that heavy casualties may be suffered in those places from shelling. Accordingly A.A.&Q.M.G. visited Australian Corps H.Q. and requested that trench shelters be supplied so that men may be accommodated outside of the above villages. 300 were promised for the next day. These above remarks particularly applied to the Reserve Brigade and the Div. Train.

Reliefs. 5th Bde. relieved the 9th Bde. in the line and the 7th Bde. relieved the 11th Bde. in reserve.

D.A.D.O.S.

Sheet 32D. H.1.A.1.3. Stores received from, and horse rugs, etc., returned to Base.

F. L. Coy.

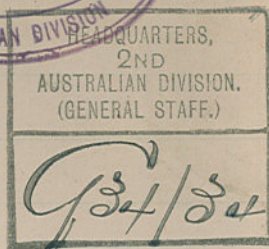
Sheet 32D/G.32.C.9.1. Work was continued in ALIENS and also along the QUERRIEU road and at BLANGY TROUVILLE.

Paymaster.

ALLONVILLE.

A.P.M.

ALLONVILLE.



To:-

"G." 2nd Australian Division.

With reference to your G/34/34 of
30th Dec: 16, asking for a statement to
show the number of covered M.G. emplacements,
etc.

This return is NIL.

Ans -

3/1/17.

Lt Col., R.E.
C.R.E., 2nd Aust. Divn. Engns

9.35 pm

2nd Australian Division.



Ref. your 95183 of 4th Jan. '16.
(1) Under existing conditions.

The arguments for and against T3 & T8 appear to be about evenly balanced, T8 is rather near a concentrated mass of guns & men have to cross an exposed ridge to get there.

T3 has the disadvantages communicated by A.D.M.S. but many cases could be held there till dusk and the nearest means of evacuation if the railway is blown up is the broad central Duckwalk which crosses the railway in two places now.

(2) Under conditions of a successful offensive however I do not think there is any question but that the T3 site will have decided advantages & I should therefore prefer to see this gone ahead with.

(3) As regards paras 4-5 of ADM5 letter, a diagram is attached showing the central R.A.P. with a circle described in red ink to demonstrate the relative distance of the R.A.P. from different portions of the line. Here again the site was chosen with a view to successful offensive conditions which would probably mean that the majority of wounded would naturally gravitate down the two sunken roads towards Millars Son.

7-1-17.

as long

Lt Col RE.

2nd Aust Div.

G.

A.Q.

— SCALE 1/10,000 —

Trenches corrected to 4-1-17
Duckwalks shown thus R.A.P.
Reg. Aid Post



2nd Australian Division Engineers

Report A 8.1.17

Right Divisional Sector.

- ① Wire Entanglements No wiring has been done the Front Support or Reserve Line.
- ② Fire Trenches & Strong Points (a) Front Line is generally in a bad condition. A new Trench has been dug from N 22 C 04 to N 22 C 70 parallel to and about 10 yds in front. This new portion of trench is free of water except near the points of Cumulus Trench and where new trench strikes Shme Trench. This portion of trench is being retitted where the posts are stationed with pickets were netting backed with Hessian and duckboards being laid. Monsoon Trench from N 28 b 1 1/2 6 to N 28 b 4 1/2 4 does not exist. Eclipse Trench is in a very bad condition. A new section of Trench has been dug from N 28 b 1 1/2 3 to N 28 b 2 1/2 8 linking up with Eclipse and Zenith Trench. Zenith Trench Very Patchy Portions of Trench good and standing well and line held by posts in portions of trench that are good. More than half of trench is useless.
- (b) Support Line. There is practically no support line behind the Front Line between N 22 C 04 and Eclipse Trench - Rainbow Support. is a series of shell holes filled with water and cannot be held under present conditions. Gusty Support. Line good in patches only from 50 to 100 yds remainder remainder bad.
- (c) Reserve Line. Rose Support. This trench has been improved and accommodation provided both in deep dug outs and in splinter proof dugout shelters. It is still in a bad condition the sides are broken & fallen in and drains have been dug to keep water clear of trenches at N 27 C 77 and N 27 C 93.

over.

Thistle Reserve. Same condition as Rose Trench. That portion to right of Endless Alley is good for about 100 yds the remainder bad.

Dewdrop Reserve. Good being cut out of a chalk formation. This trench has good German dugouts in it capable of holding 2 Company Head Quarters and 40 men.

③ Communication Trenches. (a) Eve alley is still used by day to get to the left of our area; at night time troops go overground to the Front Line.

Eternal Alley. This trench is in a very bad condition, it is duckboarded but after each period of rain the trench becomes blocked this falls of earth which works into a slurry and it is difficult to remove. The trench will never stand without retetting. It is fairly good ^{from entrance} up to N 27 d 97 and from N 28 a 42 to N 28 a 74 is also good the remainder very bad.

Energy Alley. Similar to Eternal alley. in condition, it is duckboarded throughout its length. but after rain it is generally bad.

Endless Alley. In better condition than Energy Alley is duckboarded but difficult to keep clean.

Ozone Alley. Forward end good from N 34 d 38 to Dewdrop Reserve. and from Cow Dump approx T 3 central for 300 yds up trench it is good. The portion between N 34 d 87 and N 34 d 38 is almost impassable.

Elletts
④ Overland routes. (a) Completed. Three main routes see Map attached
Loco Walk Up to Switch Trench is good being raised and put on pickets. From Switch Trench to Sunken Road. it is resting on the ground or sandbags but is passable and in good repair Sections are being raised at the crossing of Switch., Needle, Rose Trench and Sunken Rd. and being worked each way to complete. The portion that passes the Delville wood has been widened to a 30" track.

~~Extensive~~ Eskimo Walk in good condition except portion from Needle Dump Trench forward which is being lifted put on Trestles and repaired

(b) In hand. ^{Great Central} ~~Elliott~~ Walk. a 30" wide track carried up within 200 yds of Needle Trench and almost the whole of it up to T2C57 has been raised on pickets & completed.

Extensions. Owing to Divisional front being extended to the right a switch track from Eskimo Walk to Cow Dump 500 yards has been laid & another 900 yds to complete Map Location T8C07 to T3C03 1/2 approx. A connecting switch has been laid from Eskimo to ^{Great Central} ~~Elliott~~ Walk from T2616 T2653

Totals of New Duckwalk laid 670 yds

" old " relaid 1497 "

" " used 3720 "

(5) Mined dugouts. Front System. (a) In Dew Drop Reserve. an Old German dugout at N 34 a 6 1/2 8 in good condition no work being done on it; used as Coy Head Qtrs.

Most of the following dugouts are in hand being extended to provide extra accommodation.

Accommodation Dug out. at N 23 C14 has the four entrance shafts completed and the chamber completed to the South end and being extended to the Northern end which it is proposed to carry another 100'0" and an additional entrance formed.

The dugout has been filled up with 132 bunks to date & is occupied by 1/2 Coy of Pioneers working on Eternal Alley. & 50 Infantry as fatigues to the Tunnelers.

Regimental Aid Post. Dug out. at N 23 C13 Four shafts are down & the lower galleries about four feet down off each shaft. This will be filled up with accommodation for stretchers and will have a sloping shaft & trolley to lower stretchers cars into dug out.

Both these dugouts have from 22 to 28 ft. of cover. A Trench is being formed in front of the entrances revetted and duckboarded backing up the openings.

Accommodation Dug out. at N 34 a 58 under construction completed portions being bunked as work proceeds. 36 bunks have been completed to date.

These dugouts are being carried on by the 258 Tunneling Coy. N°1 Section on N 34 a 58 and N°2 on N 23 C 14 Intermediate System Rose Trench Dugouts N 33 b 46 Under Construction Gallery being extended & additional shafts being opened up. Existing work (German) consists of 2 shafts to old dugouts. The proposed new works consists of two long Galleries 9'0" wide 65'0" long & 37'0" long intersecting at right angles, this to be filled with bunks each side 3 tiers in height.

At N 27 C 76 an old German dugout. Consisting of 2 shafts & connecting gallery which is being used & extended. The ^{Left} Front line Battalion has its H.Q.s at this point.

At N 34 C 28, a deep dugout used as right Battalion H.Q. for Battalion in the line.

At N 33 C 47 Surface work improved & existing shaft being deepened and 12'0" of gallery being constructed.

At T 3 a 19 in Needle Trench shaft being deepened and 4 ft. of gallery completed. Close to this location is another old dugout, which is being used as Battalion H.Q.

At N 32 a 76 in Needle trench. Three dugouts N°1 20 bunks erected N°2 repairs to entrance & 7 ft. of gallery completed N°3 15'0" of gallery extended.

In rear 2nd Line. In Switch Trench. T 7 b 57 There are 4 dugouts under construction and not occupied.

In Lager Lane at T 13 C 59 Gallery 50'0" long completed and 12 bunks filled.

At T 2 a 52 New Salgade Head Quarters have been commenced for the Left Battalion Brigade in the Line.

⑥ Machine Gun Emplacements. There are no positions constructed only a sandbag emplacement with gun firing over parapet.

- ⑦ Burred Cable. Cable burred to the 6.117 Back area 1665 yds Forward area 97 yds Total 1762 yds
- ⑧ Scrapped Works. All trenches except those shown on the attached map.
- ⑨ Cover for Artillery. (a) Camouflage. . certain amount received from other Division & has been used for concealment from Hostile aeroplanes. . More is needed
- (b) Observation Stations with or without bomb proof cover. O.P stations provided for each unit none bomb proof. cover obtained from shell fire & in dugouts in vicinity.
- (c) Bomb proofs for gun crews. None of the pits are 5' 9" proof. Deep dugouts are being dug for gun crews & good progress made.
- (d) Bomb proofs for dumped ammunition. All dumped ammunition provided with splinter proof cover. work not yet completed.
- (f) Over head cover for guns. Provision of overhead cover for guns well in hand. Delay of obtaining elephant cupolas has been overcome & work has been well pushed on. with the exception of 15 pits all are splinter proof and mostly weather proof. Bunkers are being obtained from Guilleminot dump.
- ⑩ Regimental Aid Posts. Under construction at N 23 C.1.3. (see Section 5. Mined Dugouts) Also at N 29 C 9/5 an old German dugout is being used as R.A.P for Left Brigade in Line At T 2 b 37 in Blighty Trench is a R.A.P for the Right Brigade in the Line
- Advanced Dressing Stations Where indicated by + on attached plan.
- ⑪ Anti Tank Guns One gun Pit completed at N 33 b 54 and at N 27 C 86 one in course of construction.

W.A Henderson Major

C/Sr C.R.E 2 Aus Div *Eng*

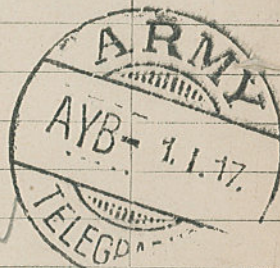
Prefix	Code	Charge	This message is on a/c of	Recd. at
Office of Origin and Service Instr				m.
Sent			Service.	Date
At				From
To				By
By			(Signature of "Franking Officer.")	

TO

"A" 2nd Aust. Div.

Sender's Number.	Day of Month	In reply to Number	
* EYB 171	1/1/17	4718	A A A

Casualties 1st aaw 1. OK
wounded 5th Field Coy.



From	CR E
Place	2 nd Aust. Div.
Time	3-5pm

The above may be forwarded as now corrected.

(Z)

Censor.

Signature of Addressor or person authorised to telegraph in his name.

* This line should be erased if not required.

H.Q. 5th AUSTRALIAN FIELD COMPANY ENGINEERS.

The 5th Ind Field Coy. Engrs.

Quarry	24/12/16	9AM.	boy relieves 14 th F.C. 5 th Div in the line & moved up & taken over dugouts at Waterloo Farm S. 18. D. O. 7.	In trench work dugouts & other work
WATERLOT FARM.	31/12/16	8.30PM.	Dug new line 10 yds in front of old line. Old line to had to be occupied fallen in & filled with water & mud.	

W. H. H. Capt. 12/1/17
 Major.
 of O. C. 5th Engrs.
 H. I. F.

H. Q. 6th AUSTRALIAN FIELD COMPANY ENGINEERS.

To 6th Field Coy. Engrs

23.12.16	Lieut RENSHAW + 8 other ranks moved to QUARRY SIDING to take over CIRCUIT WORK from 5 th Field Coy.
24.12.16	Remainder of Company less Lieut STRADWICKS party moved to QUARRY SIDING.
25.12.16	Carried on with DECAUVILLE RAILWAY work. (3 sections) Circuit work (1 section)
26.12.16	Captain LAWSON detached for duty with Divisional Artillery.

Jan 1-8-1916. O.K. for 10th unit

W. H. Harris Major
O.C. 6TH FIELD COMPANY ENGINEERS A.I.F.

H.Q. 7th FIELD COMPANY AUSTRALIAN ENGINEERS.

WAR DIARY

Army Form C. 2118.

Instructions regarding War Diaries and Intelligence Summaries are contained in F. S. Regs., Part II. and the Staff Manual respectively. Title Pages will be prepared in manuscript.

INTELLIGENCE SUMMARY

(Erase heading not required.)

DECEMBER 1916.

Place	Date	Hour	Summary of Events and Information	Remarks and references to Appendices
Bazentin S. 25.d.2.0	To 24/12/16		Various works for C.R.E. Circuit on roads, hutting, drainage etc carried out as per attached works reports, for works in Reserve area. Transport less 6 riding horses and 1 pontoon wagon and team moved to Divisional Lines at Meaulte.	
	22/12/16	2pm.	No 2 Section moved to new camp at WATERLOT FARM.	
	24/12/16	8am.	Balance of unit moved to 15th Field Coy's camp at Waterlot Farm and took over works from that unit.	
			Transport moved from Meaulte to 15th Field Coy's horse lines at position on Bernafay-Longueval Rd, north of BERNAFAY ROAD.	
			For works carried out see attached report for works done in Forward area.	
			<i>Daily</i>	
			<i>See 3/21 for work</i>	
			<i>See works reports as appended to forward diary</i>	
Ginchy Waterlot Farm.	8-1-17	10 30 pm.	Dugout in Camp completely wrecked by Shellfire, causing Casualties. 5 Killed. 4 Wounded.	

Runesby G.M. R.
a/c. 2nd to Cor AE.

151

1

SUMMARY OF WORKS REPORTS FOR MONTH
ENDING 31st DECEMBER 1916

7TH FIELD COMPANY ENGINEERS.

WORKS IN RESERVE AREA.

Bazentin- Longueval Road.

A party consisting of 10 sappers on an average working under directions of Lt Lawrence, on road supervision.

Hutting.

S.21.d.Central. Erection 68x Nissen Bow huts for parties working on Quarry Ammunition Siding-13. *huts erected.*
 3rd Australian Fld Amb- nr Bernafay extension. Erection of 1 Abincourt hut. Construction of coffee bar at Siding. *(Quarry)*

Traffic Controls Shelters.

Construction of 4 shelters for traffic controls.

Montauban -Bazentin Rd .S.21.d.7 $\frac{1}{2}$.8 $\frac{1}{2}$.

Construction of culvert drain across corduroy road, completely constructed.

Longueval Station. S.11.c Central.

Drainage-placing culverts under High wood and High Rds also under Railway-- construction of various culverts.
 Box drains constructed and placed. A number of sumps also constructed off the road.

Quarry.

Dugout extended and strengthened for C.E. B's Circuit.
 Tables and office requirements also constructed.

Ex

Caterpillar Valley and area.

Drainage of area inspected and reported upon.

Kaffir Compound. Completing 1 hut with lining.

New Field Company Camp site. S.21.a.1.6.

Construction and excavation of 14 dugouts (3 with bunks for 9x in each) balance without bunks) Excavations complete for 6 others.

3 Nissen Bow Huts and 1 Armstrong hut erected on site.
 Kitchens and latrines excavated for. Trench widened and deepened.

A portable drying room and ~~incinerator~~ *generator* combined constructed in Bazentin Camp and handed over to 6th Field Coy.

Transport on various duties. Portion of time the Horse lines were at MEAULTE and wagons worked from there and transport of rations etc to unit at Bazentin Camp.

6 Sappers were engaged during portion of time unit was on Corps works, on Marshalling, shunting tallying etc at Railway Siding, Quarry Ammunition Dump.

.....
End of Capt R's.

APPENDIX.

WORKS FOR DECEMBER
CONTINUED.FORWARD AREA.R.A.P. DUGOUTS Millers Son. N.28.c.0.3.3 sets put in. Improvements to entrance effected. Work handed over to Tunnelling Company. (258th RE)Rose Trench Dugouts. N.33.b.4.6

Driving shaft - 6 sets in parapet shaft. - 3 sets in shaft in parados gallery and blocked up chamber which had fallen in.

Embassy Lane. dugouts. N.33.c.35.

5 sets placed, 3 in shaft, 2 in gallery. Drainage of trench - cleaning out etc. Two shifts working. after 29-12-16.

Gunpit for Anti-Tank Gun N.33.b.5.4Pit excavated and timbers etc prepared for placing in position. ~~Gunpit~~Cow trench Dugouts T.3.a.1.9

2 sets placed in gallery. Improvement of trench and entrances

R.A.P. Blighty Trench T.2.b.3.7.

Cleaned and revetted trench and duckwalks laid 25 yards.

Lager Lane Dugouts. T.13.c.5.9.

10 sets placed in galleries. Trouble with running pockets.

DUCKWALK.6 sappers and 12 infantry maintaining ^{Right} ~~Left~~ track.

3 sappers 6 infantry placing wire on Grand Central track.

Extension of duckwalk to Millers Post completed.

Track to Endless Alley reconnoitred and marked out.

Switch line of ^{duck}walk laid at about Blighty trench from RT. to Central.Carrying.Material carried ~~and~~ supplied to 258th Tunnelling Coy At N.34.a.5.8Camp.

Dugout for sick-bay for 8 men completed.

Reconnaissance.

Front line reconnoitred and map of front line in course of being compiled.

Sites for Collecting station and A.M.E. ~~Alley~~ post reconnoitred.GENERAL.During period 11/12/16 ~~Major Evans~~ to end of month, Major Evans carrying out duties as C.R.E. Circuit. Captain Webb acting as O.C.. Major Evans not yet rejoined......
Sundebb Capt Webb

H.Q.2nd AUST DIV SIGNAL COY.



To 2nd Aus Division

Herewith please
find report for period commencing
25th December concluding
29th Dec - 5 days - and 2
nights actual work
The day work was carried
out in back area and the
night work forward.

D. Watson Capt
for O.C. 2ND AUST. DIV. SIGNAL COMPANY

CABLE BURYING.

RIGHT DIVISIONAL AREA.

HEADQUARTERS,
AUSTRALIAN DIVISION.
(GENERAL STAFF.)

From 30-12-16 to 6-1-17.

937/205

Date No. of Men Yards.
 Employed.

Dec.	30	day	200	210
		night	80	97
"	31	night	200	210
Jan.	1	night	180	180
"	2	day	160	165
"	3	day	184	180
"	4	day	172	220
"	5	day	190	250
"	6	day	184	250

1065

Total.. 1,762 Yds.

Total Time .. 6 days, 3 nights.

Cable Buried :-

Back Area .. 1,665 Yds.
Fwd. " .. 97 "

TOTAL .. 1,762 yds.

G. J. J. J.

G. J. J. J.

C.R. 2. W.H.

HEADQUARTERS, 2ND AUSTRALIAN DIVISION. (GENERAL STAFF.)
1/31/19

Dear Sir

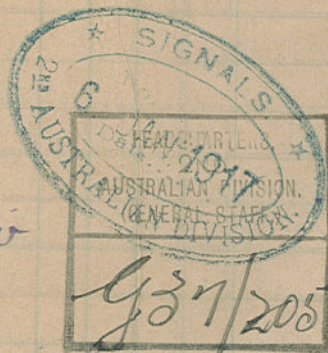
I suggest that
accommodation
be provided as
early as possible
for Warden Set
at Bn HQ at
ROSE TRENCH
N 33 7 4 4

RB G. G. G.
CC. D. A. S. S.

1/1/17

G.

To. 2nd Aust Div

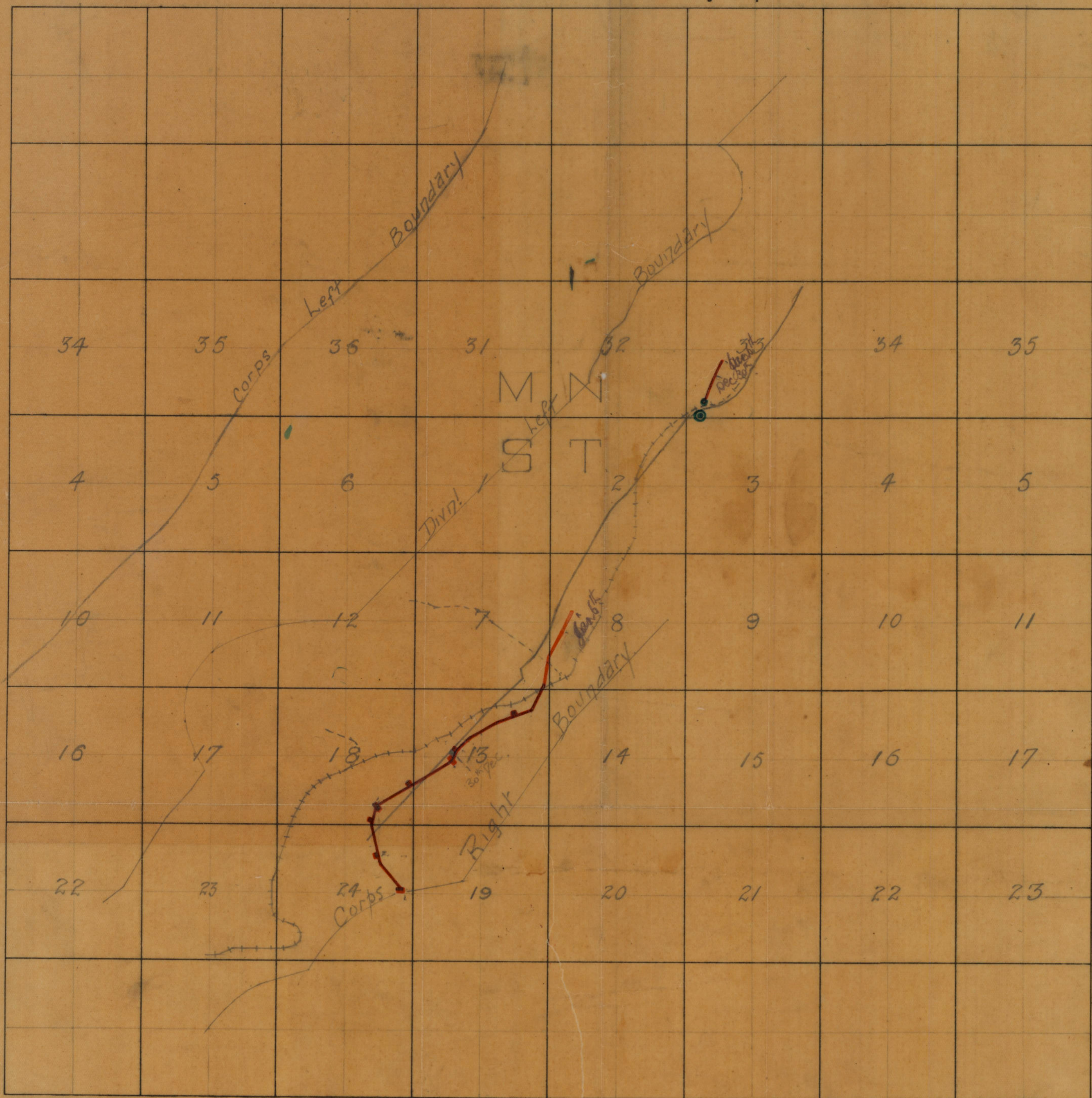


Herewith cable
burying and progress report
in 2nd Aus Divisional Area

W. Watson
for O.C. 2ND AUST. DIV. SIGNAL COMPANY

G.

Identification Trace for use with Artillery Maps.



NOTE.—(1). These traces are intended to facilitate the communication of information as to the position of targets, which have been located on a squared map.

(2). The squares on this trace are 1,000 yards in length on the 1/20,000 scale, and 2,000 yards in length on the 1/40,000 scale.

(3). The squares on the trace are fitted to the squares of the map showing the targets, which are then drawn on the trace. Sufficient letters and numbers must also be added to enable the recipient to place the trace in the correct position on his own map. A little detail may also be traced, but this is not essential. The name and scale of the map to which the trace refers must be always given. The trace can be used for either the 1/20,000 or 1/40,000 scale.

G.S.G.S. 3023

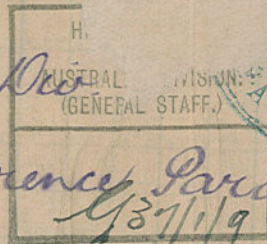
Tracing taken from Sheet.....

of the 1:20000 map of France

Signature..... Date 6/1/17

To.

2nd Aus Div



Reference Para 2 of your C198/56

The map reference given is N33638. Probably this should be N33618 line of Rose Support. In this trench there are about $\frac{1}{2}$ dozen old German dug-outs which are being improved. One at about N33617 $\frac{1}{2}$ would be, in my opinion, very suitable. The chamber is about 6 ft square and 5 ft high and some 12 ft underground, dry and well timbered. The plant could be installed at once as the only work necessary is ~~some~~ the removal of some little rubbish and a shelf from the interior. This dug-out, to date is not intended for any purpose by this Division. It is about 150 yards from the Gallin Hare to which it would be connected by telephone.

G

for

M Watson Capt

P. C. 2ND AUST. DIV. SIGNAL COMPANY

Rear area Day party. Saw 7th
150 men reported
for work 235 yards were buried
to the required depth. The weather
was fair but the ground hard.
work was concluded at about.
T 8a 3.4 1/2

Saw 7th
Night Party Forward area

70 men
reported for work from 6th Bde.
the weather was bad and the
ground difficult. 105 yards of cable
were buried well down throughout
to 6 ft blw. work finished about
H 33c 5 1/2 8 1/2.

Saw 8th
Night Party Rear area
230 men reported for
work on the buried cable route.
The ground was good but the
weather condition bad. The party
was badly handled and
officered, they were poor workers
and found great difficulty in
getting the required depth. 256 yards
were buried to the required depth
work was concluded at about.
T 8a 5 1/2. 9.

HEADQUARTERS,
2ND
AUSTRALIAN DIVISION.
(GENERAL STAFF.)

SIGNALS.
No L/108.
JAN. 1917
Date.....
AUSTRALIAN DIVISION.

to
2nd Aus Divn 937/205

I desire to draw
attention to the splendid manner
in which the party from the
27th Batten detailed for cable
laying, worked.
The work was well done and
the party well handled

G

J. H. Watson Cpt
O. G. 2ND AUST. DIV. SIGNAL COMPANY

R 1210pm

Aw m26