

5/9/55

APRIL TO
DECEMBER 1944

ORIGINAL

AUSTRALIAN WAR MEMORIAL
ACCESS STATUS
OPEN

I FIELD SQUADRON

WAR DIARY or INTELLIGENCE SUMMARY.

(Erase heading not required.)

Army Form C. 2118.
(adapted.)

Unit 1 Aust Fd Sqn RAE (AIF)

Date and Time.—From ¹ April 44

T₀ 30 Apr 44

| Place. | Date. | Hour. | Summary of Events and Information. | Remarks and references to Appendices, Diaries, &c. |
|-----------|-------|-------|---|--|
| MILNE BAY | Apr 1 | | Major MACINTOSH rejoined ex 110 C.S.S | |
| " | " 6 | | Capt C.R. FAINE seconded and attached to DES E IN C Staff LHQ Lt E WATSON taken on strength ex Instructional Staff LHQ S.M.E. (ca) | |
| " | " 7 | | Lt A. SMITH appointed A. 2 i/c | |
| " | " 8 | | Coconut tree fell across orderly room destroying 1 Imperial typewriter and other equipment, no injury to personnel. | |
| " | " 13 | | Drum Rumbling Plant completed | |
| " | " 14 | | Diesel fuel filling point completed. | |
| " | " 18 | | Drum Storage area completed | |
| " | " 23 | | Jetty reconstruction - location and driving of piles on main jetty completed steel cubes removed. | |
| " | " 24 | | Roof supporting frame work tank No.3 failed. a maximum drop of about 4 ft in roof resulted. | |
| " | " 28 | | 6" & 1" oil pipelines completed. | |
| | | | | |
| | | | | |
| | | | | |

1.

By Authority: L. F. JOHNSON, Commonwealth Government Printer, Canberra.

OC 1 Aust Fd Sqn RAE (ALF)

(Erase heading not required.)

(adapted.)

Date and Time.—From 1 May 44

T₀ 31 May 44

G. M. H. L. Major
OC 1 Aust Fd Sqn RAE (AIF)

WAR DIARY or INTELLIGENCE SUMMARY.

(Erase heading not required.)

Army Form \pounds 2118.
(adapted.)

Unit 1 Aust Fd Sqn RAE (AIF)

Date and Time.—From 1 June 44

To 30 Jun 44

[illegible]

L.

By Authority: L. F. JOHNSON, Commonwealth Government Printer, Canberra.

OC 1 Aust Fd Sqn RAE (AIF)

(Erase heading not required.)

(adapted,

Date and Time.—From 1 Jul 44 To 31 Jul 44

Requid + initialled in absence
of Lt. Smith who compiled diary
for the same period
OC 1 Aust Fd Sqn RAE (A12)

By Authority: L. F. JOHNSON, Commonwealth Government Printer, Canberra.

WAR DIARY or INTELLIGENCE SUMMARY.

(Erase heading not required.)

Army Form C. 2418.
(adapted.)

Unit 1. Aust. Fd. Sqn RAE (AIF) Date and Time.—From 1 Aug 44 To 31 Aug 44

| Place. | Date. | Hour. | Summary of Events and Information. | Remarks and references to Appendices, Diaries, &c. |
|---------|----------|-------|---|---|
| KAPOOKA | 3 Aug 44 | | Lts COULTHART, MULVEY & PRICE rejoined ex Sig COURSE No.4 | <i>W.D.B.</i> |
| | 12 " 44 | | Unit returned to KAPOOKA from Bridging Training. | <i>W.D.B.</i> |
| | 13 " 44 | | WO II JAMES H marched in from 1 Bn R.A.E. T.C. | <i>W.D.B.</i> |
| | 14 " 44 | | Unit received warning for movement. | <i>W.D.B.</i> |
| | 19 " 44 | | Unit won drill competition in inter-unit sports held by C.O. 4 RAE Trg Bn selected to represent 4 Bn in inter-battalion sports. | <i>W.D.B.</i> |
| | 20 " 44 | | Lt J.S. COULTHART fractured Scapoid Bone left wrist playing football | <i>W.D.B.</i> |
| | 23 " 44 | | Unit won drill competition in RAE TC inter-battalion sports. | <i>W.D.B.</i> |
| | 31 " 44 | | Reinforcements commence to march in. | <i>W.D.B.</i> |
| | | | | <i>Signed & initialed in absence of Lt Smith who compiled diary</i> |
| | | | | <i>W.D.B. [Signature] Major</i> |
| | | | | OC 1 Aust Fd Sqn RAE (AIF) |

L.

By Authority : L. F. JOHNSTON, Commonwealth Government Printer, Canberra.

WAR DIARY or INTELLIGENCE SUMMARY.

(Erase heading not required.)

Army Form 2118.
(adapted.)

Unit 1st Aust Fd Sqn RAE (AIF) Date and Time.—From 1 Sep To 30 Sep 44

| Place. | Date. | Hour. | Summary of Events and Information. | Remarks and references to Appendices, Diaries, &c. |
|-------------|-----------|-------|---|--|
| KAPOOKA | 1 Sep 44 | | Lt J.E. SHARPLES marched out to LHQ S.W.E. (Fd) Course 82/44 | <i>WJH</i> WO08 & W3009 |
| | 8 " 44 | | WO II WANLEY R.S. marched out for tour of instructional duties 2 Bn RAE TC | <i>WJH</i> Training syllabus |
| | 9 " 44 | | Unit departed WAGGA for movement to WARWICK Qld - Strength 5 offr 214 ORs | <i>WJH</i> Copies of movement |
| | 11 " 44 | | Unit arrived KALINGA Staging Co.,p | <i>WJH</i> orders. |
| | 12 " 44 | | " departed " " " for WARWICK. Detained at WARWICK Arrived by truck at Approx 1500 hrs at MORGAN PARK | <i>WJH</i> |
| MORGAN PARK | 15 " 44 | | Lt A. SMITH Marched out to attend LHQ SME Wks Service Course 53/44 Lt J.S. COULTHART evacuated to 2/12 A.G.H. | <i>WJH</i> |
| | 16 " | | Unit departed Morgan Park 1030 hrs for GROVELY per MT Convoy arrived Grovely 2030 hrs in rain. Rain throughout journey. Several trucks without canopies. 2/101 Gen Tpt Coy supplied convoy. W.E. arrived Roma St Station ex WAGGA 0800 hrs | <i>WJH</i> |
| | 16 Sep 44 | | | <i>WJH</i> |
| | 19 " 44 | | Unit commenced training programme (see attached Schedule) | <i>WJH</i> |
| | 20 " 44 | | 4 Tp commence commence works programme | <i>WJH</i> |
| | 23 " 44 | | Warning order for movement received. Move not before Oct.1 | <i>WJH</i> |
| | 25 " 44 | | Detachment from 44 D.C.R.E. recalled. | <i>WJH</i> |
| | 27 " 44 | | Range Practice | <i>WJH</i> |
| | 28 " 44 | | 6 Tp employed on works | <i>WJH</i> |

1.

By Authority: L. F. JOHNSTON, Commonwealth Government Printer, Canberra.

*Signed & submitted in place of Lt Smith
who completed Diary*
WJH
Major
OC 1 Aust Fd Sqn RAE (AIF).

1. AUST BARR SUB AREA.

TRAINING SYLLABUS.

STORES REQUIRED.

NB. Reference must be made at the commencement of each subject on the syllabus to the list of stores required at the head of each section in the SAT para and certain other publications.

RIFLE INSTRUCTION.

Aiming Rests.
Aiming Discs.
Aim Correctors.
Targets, small 200/25.
" grouping 100/25.
" snapshooting.
" silhouette.
Signal Flags.
Chamber cleaning sticks.
Drill rounds .303".

BAYONET.

Bayonet dummies, single pairs and ground dummies.
Bayonet trg sticks.
Assault course.

BRN 1. M. G.

Brn Guns (complete)
Tripods.
Targets, grouping 100/25.
Drill rounds .303".

GRENADES.

Dummies, No 36M.
Grenades, Nos 36M
69
69
74
75
77.

TANK ATTACK RIFLE.

Boys Tk A rifle (complete).
Drill rounds .55".
Cleaning materials.

MORTAR 2".

Mortar 2".
Drill bombs.
Bombs, 2" H.E.
Smoke.
Signal.
Flare with parachute.

SUB MACHINE GUN.

Owen Gun.
Austen Gun.
Ammunition Gun (For magazine filling).

3. AUSTRALIAN SUB AREA

MAP READING SYLLABUS

N.B. These lectures will be given at night, one during each week of the training syllabus.

Practical Application of the lessons taught should be included with route marches.

| | | |
|--------------|--|---|
| Lecture No 1 | Introduction Definitions Conventional Signs System of Reference | (Manual of Map Reading (Chap 1 Sec 3 (Chap 2 Sec 8-9 (ATM (Aust) 15 - Supplement |
| Lecture No 2 | Scales Orientation | (Manual of Map Reading (Chap 3 Sec 10-11-13 (Chap 3 Sec 52-53-54-55 (ATM (Aust) 15- Supplement |
| Lecture No 3 | Bearings The Protractor | (Manual of Map Reading (Chap 5 Sec 39-40-41 (Chap 10 Sec 62-63 (ATM (Aust) 15 -Supplement |
| Lecture No 4 | The Compass Description Use by Day Use by Night Relief and its Interpretation | (Manual of Map Reading (Chap 10 Sec 64-65-68 (Chap 5 Sec 25 to 33 (ATM (Aust) 15 - Supplement (|

LIST OF TEXT BOOKS.

Weapons Trg.

| | | | |
|-----------|--------|--------|-----------------------|
| WAT Vol 1 | Part 1 | (1937) | Weapon Trg |
| | 2 | (1943) | Application of Fire |
| | 3 | (1943) | Rifle |
| | 4 | (1943) | Bren LMG |
| | 5 | (1937) | Tk A Rifle |
| | 6 | (1943) | Anti Aircraft |
| | 6a | (1943) | " " |
| | 8 | (1943) | Mortar 2" |
| | 11 | (1943) | Pistol .38" |
| | 12 | (1944) | Bayonet |
| | 13 | (1945) | Grenades |
| | 14 | (1943) | Small Arms Practices) |
| | 15 | (1943) | SMGs |

Anti Gas

Gas Training (Aust) 1942.

Map Reading

Manual of M.R. & F.S. (1939)

Concealment & Camouflage

MTF 33 (1940) Training in Field Craft and Elementary Tactics.
MTF 46 part 1 Concealment and camouflage (general)
Infantry Minor Tactics.

Field Craft.

MTF 33 (1940) Training in Field craft and Elementary Tactics.
Infantry Section Leading (1939)
Infantry Minor Tactics (1941)
Instructors Handbook on Field craft and Battle Drill

Drill etc.

MTF 16 (a) 1944 Dismounted drill.

Booby Traps

MTF 40 Part 1 (1943) Mines and booby traps
ATM 33

P.T.

Physical training without apparatus (Tables 1-6)
Physical Training (1944)

Fieldcraft.

Flags.
Whistle.
Blank rounds .503.
Silhouette.

Anti Gas

All equipment on WET of unit.

MAP READING.

Maps, 1"-1 mile.
Protractors.
Compasses.

BOOBY TRAPS.

Safety Fuse.
F.I.
F.I.D.
Dummy grenades.
Detonators.
Trip wire.
Tins etc. for setting traps.

PHYSICAL TRAINING.

Medicine balls.
Rope for tug-o-war.

1 AUST BASE SUB ANNA

BASIC INFANTRY COURSE - 4 WEEKS.

1 st. WEEK.

| DAY | 0830-0900 | 0900-0945 | 0945-1030 | 1030-1045 | 1045-1215 | 1330-1415 | 1415-1500 | 1500-1515 | 1515-1700 |
|-----|---|--|--|--|------------------------|--|---|---|------------------|
| 1. | Parade Drill MTF 18 A Secs 15-18 | Rifle-Mech & Trigger Pressing SAT Pam 3 Less 1 | App of Fire SAT Pam 2 Sec. 1. | Smoke Lecturette, Discipline in a Trg. Camp. | Lecture 2 Lt. Easy | Rifle Cleaning IMPORTANT SAT Pam 3 Less 2. | Bayonet SAT Pam 12 Less. | Smoke Lecturette Discipline in the Field. | Organized Sport. |
| 2. | Do Secs 19-21 | Rifle - Loading & Unloading SAT Pam 3 Less 3. | App of Fire Locating Enemy SAT Pam 2 Less 1 | Do. Badges of Rank (US) Army. | Lecture 3 Lt. Easy | Rifle Aiming Instr. SAT Pam 3 Less 6 | App of Fire Searching Ground SAT Pam 2 Less 1 | Do. Badges of Rank (Jap Army) | Do. |
| 3. | Do. Secs 22 and 33 | Rifle Aiming SAT Pam 3 Less 7 | Gas Trg. Resp " " 42 Sec. 7 | Do. Who's Who in your Formation Col. Massey | Lecture 4 Lt. Easy | App of Fire J D SAT Pam 2 Chap 2 | Bayonet SAT Pam 12 Less | Do. Latent War Moves | Do. |
| 4. | Do. Secs 23 and 24 | Rifle Aiming SAT Pam 3 Less 8 | Lecture Theory of SA Fire SAT Pam 1 Sec 2. | Do. Dress - Its effect on Morale. | Lecture 5 Lt. Easy. | Rifle Aiming SAT Pam 3 Less 9 and 10. | Bayonet Recap. | Do. Care of the Feet. | Do. |
| 5. | Do. MTF 18 A Secs 25-28 | Rifle Aiming SAT Pam 3 Less 11 & 12 | Rifle Recap. | Smoke Lecturette "Waste & Salvage" | Lecture 6 Lt. Easy. | Rifle Lying Posn. SAT Pam 3 Lesson 13 | Lecture War Cases Gas Trg. 1942. WOM Talbot | ORGANIZED | SPORT. |

1st. WEEK Continued.

| DAY | 0830-0900 | 0900-0945 | 0945-1030 | 1030-1045 | 1045-1215 | 1330-1415 | 1415-1500 | 1500-1700 |
|-----|-----------|-----------|-----------|-----------|-----------|-----------|-----------|-----------|
|-----|-----------|-----------|-----------|-----------|-----------|-----------|-----------|-----------|

| | | | | | | | | |
|----|--|---|--|-------------------------------------|--|--------|--|--|
| 6. | Parade Drill MTF 18 A Secs 29 and 2232 | Rifle Lying Foam SAT Pam 3 Less 14 | Gas Trg. Respirator Drill-Gas Trg.42 Secs. 8-9 | Do. Security of Infm(General) | ROUTE Sandwiches and Water Bottles. | MARCH. | | |
|----|--|---|--|-------------------------------------|--|--------|--|--|

COMPLETION OF FIRST WEEK.

-----000-----

2 nd. WEEK.

| DAY | 0830-0900 | 0900-0945 | 0945-1030 | 1030-1045 | 1045-1215 | 1330-1415 | 1415-1500 | 1500-1515 | 1515 - 1700 |
|-----|--|---|--|--|---|--|--|--|------------------|
| 1. | Parade Drill MTP 18 A Secs 34-7 | Rifle Firing Posna SAT Pam 3 Less. 15-16 | App of Fire Recognition Fire Orders SAT Pam 2 Less 7 | Smoke Lecturette Latest War Moves | Lecture 7 Lt. Eszy | SMG Loading & Unloading SAT Pam 15 Less 1 | Rifle Firing Instr. SAT Pam 3 Less 13-16 | Smoke Conduct of Pos-action if Captured | Organized Sport. |
| 2. | Do. Secs. 38-41 | SMG Hold & Firing SAT Pam 15 Less 2 | Rifle Snap Shooting SAT Pam 3 Less 17-18 | Do. Security of Infm (Censorship) | Lecture 8 Lt. Eszy | App of Fire Fire Orders SAT Pam 2 Less 3 | Gas Trg. Eqpt. & Sentries Gas.Trg42 Less6-10-13-14 | Gas Trg. Equip & Sentries Gas.Trg 42 Less.6-10-13-14 | Organized Sport. |
| 3. | Do. Secs.42-44 | Rifle Rapid Fire SAT Pam 3 Less 19 | Gas Trg. Resp.Drill Gas.Trg.42 Less 8-9 | Do. Security of Infm -(Pd Security Sec) | Rifle Firing from cover SAT Pam 3 Less 20-21 | SMG Strip & Cleaning SAT Pam 15 Less 3 | App of Fire Recap. SAT Pam 2 Less 7-8 | Do. What to do with Capt- ured Enemy Tps & Matl. | Organized Sport. |
| 4. | Do. Secs.45-7 | App of Fire Recap. SAT Pam 2 | Rifle Firing Recap; SAT Sec 3. | Do. Living Assault off the Land (General) | Bayonet Trg. Living Assault Course. | Gas Trg. Decontam. Gas Trg.42 Less 11-12 | Rifle F D E SAT Pam 3 Sec 4 | Do. Living off the land - edible Fruits & Berries. | Organized Sport. |
| 5. | Do. Secs 52-54 | IMG Gen. Description & Character istics SAT Pam 4 | SMG Recap. & other SMGs SAT Pam 15 | Do. Latest War Moves. | Lecture 9 Lt. Eszy | A.A.Lecture SAT Pam 6 | IMG - Mag. filling, loading,un- snake Bite, loading, sight setting SAT Pam 4 Less1 | Do. Treatment of snake Bite. | Organized Sport. |
| 6. | Do. Secs 55-58 | IMG Hold Aim & Firing SAT Pam 4 Less 2. | IMG Stripping SAT Pam 4 Less 3 | Do. Army Educ. Service. | A.A.-Direct Attacker SAT Pam 6 Less 2 | R O U T E M A R C H. | | | |

3rd week

| DAY | 0830-0900 | 0900-1945 | 0945-1030 | 1030-1045 | 1045-1215 | 1231-1415 | 1415-1500 | 1500-1615 | 1615 - 1630/1700 |
|-----|--|---|--|---|-------------------------------|---|---|---|------------------|
| 1 | Parade Drill HTP 18A Secs 59 -61 | MSG Strip- ping SAT Pm 4 Less 4 | At-land crossing Wiene SAT Pm 6 Less 426 | Smoke Aust Army Amenities Services | Lecture 10 Lieut BAY | Article Recap. SAT Pm 3 Less 6 214 | MSG Stripping SAT Pm 4 Less 5 | Smoke Lecture- ette Latest SAT Pm 5 | ORGANISED SPORT |
| 2 | Do Secs 62-65 | MSG Care & Maint IMPORT ANT SAT Pm 4 Less 6 | Lecture 10 Lieut BAY (Contd) | Do First Aid Pia Dressing | Concrete | MSG -In Handling SAT Pm 4 Less 8-x | ---Concrete--- | | ORGANISED SPORT |
| 3 | Do Secs 64-65 | MSG Mechanics SAT Pm 4 Less 7 | Water Supply | Do First Aid Burns & Scolds | (----- ROVER MATCH -----) | | | | |
| 4 | Do Sec 66 | Guards & Centries HTP 18A Secs 61-64 6105-112 | Gas Try Recapit. Gas Try 48 | Do First Aid Heat & Sunstroke Shock | Water Supply | MSG-stoppages SAT Pm 4 Sec 9 | Con & Cam-Indiv HT Sec 48 FOED Sec 4 | Smoke Latest war MOVES | ORGANISED SPORT |
| 5 | Do Sec 67-70 | MSG Recap SAT Pm 4 Less 829 | AA FWT & Recap SAT Pm 6 Less 10 | Do Badges of Rank (Rat) | Water Supply | Lecture Cover from Fire FOED Sec 8 | MSG Recap SAT Pm 15 | Do Badges of Rank HTP | ORGANISED SPORT |
| 6 | Do Secs 71-73 | MSG Recap SAT Pm 4 Less 12 2 | Running & Maint of Diesel & Internal comb. Eng- ines Lect 1 | Bayonet The Assault Course | | 1 1 1 | | | |

4th YEAR

| DAY | 0830-0900 | 0900-0945 | 0945-1030 | 1030-1045 | 1045-1215 | 1230-1415 | 1415-1600 | 1600-1615 | 1615-1700 | |
|-----|---|---|---|--|--|---|---------------------|---------------|-----------------|-----------------|
| 1 | Parade Drill HTP 18A Sec 74-77 | Sgt HENRY | MSG Hand- ling Tripod Sgt Pm 4 Less 11 | Smoke Lecturette & Pistol Hygiene Antiborne Diseases | L.C. Hg Paint Capt War- drop Lect. 2 | FIREARMS TRAINING HTP 30 31-32 | | | ORGANISED SPORT | |
| 2 | Do Sec 78-80 | MSG Hand- ling Tripod Sgt Pm 4 Less 12-13 | MSG Fixed Limes Sgt Pm 4 Less 14 | Do Latent War Movies | Caracaint Motor Vans Batteries Filters Radiators Lubrication Sgt HENRY | ---H A F H E A D I N G --- | | | ORGANISED SPORT | |
| 3 | Do Sec 85-87 | Pistol Firing Sgt Pm 11 Less 2 | MSG Recap Care & Cleaning Sgt Pm 4 Less 5 | Do Treatment or Natives | Lecture Setting Boreholes & Fencing Charges Lt HENRY | Pistol Firing Sgt Pm 11 Less 3 | H A F H E A D I N G | | | ORGANISED SPORT |
| 4 | Do Secs 90-95 | ROUTE MARCH (To include individual concealment , camouflage, fire discipline training, and practical map reading) | | | | | | | | |
| 5 | Do Sec 96-98 | T's. O. N. T. | | | T's. O. N. T. | | | T's. O. N. T. | | ORGANISED SPORT |
| 6 | Do Recap Secs 90-98 | T's. O. N. T. | | | T's. O. N. T. | | | T's. O. N. T. | | ORGANISED SPORT |

Copy.

MESSAGE FORM.

From - Second Aust Army

To - 1 RAE Trg Centre

SD19823 confidential warning order (.) in accordance with LAMFORCES SD70482 of 11 Aug 1 Aust Pd Sqn will move strength as at time of move from WAGGA to QLD under arrangements MOVE LHQ (.) under Comd Qld L of C Area on arrival for allotment 2 Aust Base Sub Area (.) move not before 7 Sep to arrive QLD not later than 15 Sep (.) take personal arms and equipment only (.) on arrival Qld take over unit equipment DIRMORE (.) unit will be equipped to WET scale under arrangements Qld L of C Area (.) no transfers personnel from this unit prior move without a HQ authority (.) GRO 316 particulars to this HQ only (.) further adm details later ACK

Copy only.

MESSAGE FORM.

From - Second Aust. Army.

To - RAE Trg Centre

Q21810 Restricted (.) Reference our Q21741 (.) 1 Aust Field Squadron RAE (AIF) (.) confirming conversation TWYCROSS GENTLES 35 tons stores plus 2 escort 1 Fd Sqn 1515 hrs Tuesday 12 Sep (.) personnel will entrain KAPOCKA Saturday 9 Sep departing 1740 hrs (.) contact local RTO for further information detail of movement order follows

MESSAGE FORM

From : MILBAS E BRISBANE

To : 1 Aust Fd Sqn . Mov BRISBANE

Info 2 Aust Base Sub Area 2 Aust L of C Area

SD3392 RESTRICTED warning order (.) 1 Aust pd Sqn will move from WARWICK to GROVELY BRISBANE under arrangements Mov BRISBANE (.) Move ea rliest at present strength with unit equipment and vehicles at present held tentage and accommodation stores (.) Advise particulars GRO G.318 to Mov BRISBANE MILBASE BRISBANE at earliest (.) On receipt Mov BRISBANE arrange move (.) Unit advise completion move (.) Ack

MESSAGE FORM

From : 1 Aust Fd Sqn

To : Movts BRISBANE Milbase BRISBANE

PSL33 (.) Secret (.) ref SD3392 (.) Ack(.) First (.) MORGAN PARK (.) Second (.) 15 Sep 44
(.) Third (.) Offers 3 WO I Sjs 8 rank & file 204 (.) Fourth (.) Nil (.) Fifth (.)
33 tons DW 63 tons Cubic at present in transit ex WALLANGARRA to this unit excluding
2 tons DW 8 tons cubic coy baggage and 15 tons cubic tentage and accn stores

Copy.

MESSAGE FORM.

From - Milbase Brisbane
To - 1 Aust Field Squadron RAE (AIF)

SD3550 confidential warning order (.) unit will prepare for
embarkation tropical service (.) move NOT before 1 Oct (.)
move at strength at time of move with complete unit equipment
tentage and accn stores and WE scale vehicles (.) advise deficiencies
equipment DDOS MILBASE BRISBANE MOV BRISBANE And LANDOPS at
earliest (.) ack

Copy.

MESSAGE FORM

From - 1 Aust Field Squadron RAE (AIF)
To - MOVTS BRISBANE.

For information

LANDOPS, MILBASE BRISBANE.

FS142 (.) Restricted (.) Ref SD3550 (.) First (.) GROVELY BRISBANE(.)
Second (.) 1 Oct 44 subject to further vehicle issues (.) Third (.)
Offrs 5 WOs 1 Sgts 10 R and F 225 (.) Fourth (.) 6 x $\frac{1}{4}$ -ton trucks
2 trailers jeep 1 3-ton GS 4 x 4 3 3-ton GS winch 4 x 4 1 BD trailer
3 compressor trailers (.) Fifth (.) 30 tons DW 60 tons cubic 4 tons DW
23 tons cubic baggage tents accn stores 3 tons DW 3 tons cubic cased
amm and explosives (.) ack

FIELD RETURN OF OFFICERS

Army Form W.3008
(Adapted) (Page 1)
(Revised Jan., 1943)

At 0600 Hrs. Saturday 1/11/1944

1 AUST FD SQN RAE (AIF)
(Unit)

(Serial No.)

W.E. 1/11/1944 OFFRS. 10 O.R's. 10 OFFRS. 10 O.R's. 10 ATT. BY W.E.

PART A.—POSTED STRENGTH, SURPLUS OR REINFORCEMENTS REQUIRED.

| 1 | 2 | 3 | 4 | 5 | 6 | 7 | 8 | 9 | 10 | | | | |
|--------------------------|----------------|-----------------|------------------|---|--------------------------|------------------|-----------------|----------------|-------------------|--------|----------|----|--------|
| W.E. EXCLUDING ATTACHED. | | | | DETAIL. | ATTACHED ALLOWED BY W.E. | | | | | | | | |
| Rein'ts Required. | Deficient W.E. | Surplus to W.E. | Posted Strength. | | Arm or Corps. | Posted Strength. | Surplus to W.E. | Deficient W.E. | Rein'ts Required. | | | | |
| | | | | Lieut.-Colonels Majors Captains Lieutenants Quarter-masters A.A.N.S. and A.A.M.W.S. Offrs. Civilians Counting as Offrs. | | | | | | | | | |
| | | | | | | | | | | | | | |
| DETAIL. | | | | A.I.P. | C.M.F. | A.W.A.B. | A.A.N.S. | A.A.M.W.S. | CIVIL. | R.A.N. | R.A.A.F. | ** | TOTAL. |
| A. | | | | | | | | | | | | | |
| E.(1) | | | | | | | | | | | | | |
| E.(2) | | | | | | | | | | | | | |

Analysis of Part A to be shown here by ALL units. Only units notified in para. 10 of instructions for completion of form will complete Part E(1) & E(2).

* Insert detail of higher ranks as necessary.

** Personnel belonging to a category not provided for in the analysis will be shown in this Col. Particulars will be shown, e.g., 20 U.K. Forces; 10 N.Z. Forces.

PART B.—PARTICULARS OF OFFICERS JOINED OR QUITTED DURING WEEK.

OFFICERS JOINED DURING WEEK

| Army No. | Rank. | Name and Initials. | Unit From. | Date. | CAUSE. |
|----------|-------|--------------------|------------|-------|--------|
| | | | | | |
| | | | | | |
| | | | | | |
| | | | | | |
| | | | | | |
| | | | | | |
| | | | | | |
| | | | | | |
| | | | | | |
| | | | | | |

OFFICERS QUITTED DURING WEEK.

| Army No. | Rank. | Name and Initials. | Unit To. | Date. | CAUSE. |
|----------|-------|--------------------|----------|-------|--------|
| | | | | | |
| | | | | | |
| | | | | | |
| | | | | | |
| | | | | | |
| | | | | | |
| | | | | | |
| | | | | | |
| | | | | | |
| | | | | | |

PART C.—DESCRIPTION OF OFFICERS WHOSE RETURN TO (Unit) IS PARTICULARLY REQUESTED. /194.

| Army No. | Rank. | Name and Initials. | REMARKS (e.g., present whereabouts if known). |
|----------|-------|--------------------|---|
| | | | |
| | | | |
| | | | |
| | | | |
| | | | |
| | | | |
| | | | |
| | | | |
| | | | |
| | | | |

25744 (Serial No.)

PART D.—NOMINAL ROLL OF OFFICERS ON POSTED STRENGTH

At 0600 Hrs. Saturday 9/9/1941 (Total to agree with Columns 4 and 7 of Part A.)

[illegible]

PART E.—NOMINAL ROLL OF OFFICERS ATTACHED FROM OTHER UNITS.

[illegible]

Date of Despatch

Signature of Commander

35 / 44 (Serial No.)

(UNITED STATES)

W.E

Part C. Other Ranks Included in Part A Detached to Other Units.

A blank sheet of graph paper with horizontal ruling lines. The paper has a light beige background and dark blue horizontal lines spaced evenly apart. There are also vertical lines forming columns, creating a grid pattern. A small black dot is visible near the bottom center of the page.

(Unit) is Particularly Requested. _____/_____/194_____

[illegible]

Unit

**PART E. Detail of Present Strength and Reinforcements required as shown in
Part A of Army Form W.3009 at 0600 Hours Saturday 9 / 9 / 1944.**

| Details of Tradesmen. GROUP I. | W.E. | Posted Strength. | Reinfs. Required. | Details of Tradesmen. GROUP I. (cont.) | W.E. | Posted Strength. | Reinfs. Required. | Details of Tradesmen. GROUP II. (cont.) | W.E. | Posted Strength. | Reinfs. Required. | Details of Tradesmen. GROUP III. (cont.) | W.E. | Posted Strength. | Reinfs. Required. |
|-----------------------------------|------|------------------|-------------------|---|------|------------------|-------------------|--|------|------------------|-------------------|--|------|------------------|-------------------|
| Ammunition Examiners | | | | Surveyors, Engineering | 54 | 34 | 5 | Operating Room Assts. | 92 | 92 | 7 | G.P.O. Assistants | 122 | 119 | 11 |
| Armament Artificer | | | | Surveyors, R.A.A. | | | | Operator, Keyboard | | | | Hammermen | | | |
| Armament Artificer | | | | Surveyors, Topographical | | | | Operator, Line | | | | Leather Stitchers | | | |
| Armament Artificer | | | | Surveyors, Trigonometrical | | | | Operator, Signal | | | | Orderlies, Nursing | | | |
| Armament Artificer | | | | Toolmakers | | | | Operator, Switchboard | | | | Orderlies, Nursing | | | |
| Armament Artificer | | | | Turners | | | | Operator, Wireless | | | | Plate Layers | | | |
| Armament Artificer | | | | Watchmakers | | | | Opticians | | | | Rangefinders | | | |
| Armament Artificer | | | | Welders | | | | Painters | 3 | 2 | 1 | Riveters | | | |
| Armament Artificer | | | | <i>Carpenter</i> | | | | Panel Beaters | | | | Roughriders | | | |
| Armament Artificer | | | | <i>6 Joiner</i> | 16 | 15 | 1 | Photographers, Dry Plate | | | | Saddlers | | | |
| Artillery, Artillery | | | | | | | | Predictor Numbers | | | | Saddletree makers | | | |
| Artillery, Engine | 10 | 6 | 4 | | | | | Printers | | | | Shoemaker and Boot | | | |
| Blacksmiths | 7 | 8 | | | | | | Radiographers | | | | Stevarders | | | |
| Bricklayers | 3 | 4 | | | | | | Biggers | 3 | 3 | | Stokers, Staty. Engine | | | |
| Computers | | | | | | | | Sawyers | | | | Storemen, Technical | 5 | 5 | |
| Cooks, Hospital | | | | GROUP II. | | | | Signallers | | | | Tailors | 1 | | 1 |
| Coppersmiths | | | | Armourers | | | | Signwriters | 4 | 4 | | Textile Editlers | | | |
| Dipnsmers | | | | Assmen | | | | Telescope Identifu. Numbers | | | | Tinsmiths | 3 | 2 | 1 |
| Draughtsmen | | | | Bakers | | | | Well Barers | | | | Vulcanizers | | | |
| Draughtsmen (Architectural) | | | | Biz. Cam'd's. Asst. | | | | Wheelers | | | | Wagon Erectors | | | |
| Draughtsmen (Engineering) | 1 | 1 | | Bellfounders | | | | Winchman | | | | Whitesmiths | | | |
| Draughtsmen (Mechanical) | | | | Carpenters | 16 | 16 | | Wireman | | | | <i>Boilerman</i> | 7 | 7 | |
| Draughtsmen (Topographical) | | | | Carpenters and Joiners | | | | Woodturners | | | | <i>M.C. O.</i> | 5 | 5 | |
| Electricians | 1 | | 1NR | Cooks | | | | | | | | <i>Maker D'iman</i> | 1 | 1 | |
| Electricians (M.V.) | | | | Dental Mechanics | | | | | | | | <i>Hygiene D'iman</i> | 1 | 1 | |
| Electricians (Signals) | | | | Driver-Mech. (Eng. and Med.) | | | | | | | | <i>Cpl. Hen Spec</i> | 18 | 16 | 2NR |
| Fitters | 1 | 2 | | Driver-Operator | 10 | 10 | | | | | | <i>Bonners</i> | 25 | 29 | |
| Fitters (Cycle) | | | | Drainers | | | | | | | | <i>Drivers AA.</i> | 35 | 34 | 1 |
| Fitters (Electrical) | | | | Electricians | | 1 | | | | | | | | | |
| Fitters (Gun) | | | | Electricians (Engineers) | | | | GROUP III. | | | | | | | |
| Fitters (Instrument) | | | | Fire Control Operators | | | | Battery Surveyors | | | | DETAILS OF NON-TRADESMEN. | | | |
| Fitters (M.V.) | | | | Gun Operator | | | | Butchers | | | | <i>W.D. Non Spec</i> | 1 | 1 | |
| Fitters, Railway Signal | | | | Hatchman | | | | Clerks | 5 | 4 | 1 | <i>S.G. R. S.</i> | 1 | 1 | |
| Fitters, Signals | | | | Height Taker | | | | Clerks, Supply | | | | <i>Mech. S'gt</i> | 3 | 2 | 1 |
| Grinder, Precision | | | | Heli Operator | | | | Clerks, Technical | | | | <i>Fitter S'gt</i> | 1 | 1 | |
| Mechanics, Instrument | | | | Instrument Operator | | | | Coach Trimmers | | | | <i>Cpl.</i> | 1 | 1 | |
| Mechanics, Instrument (Signals) | | | | Intelligence Duties | | | | Concretors | 6 | 5 | 1 | <i>tp. S'gt</i> | 1 | 1 | |
| Mechanics, Instrument (Signal) | | | | Joiners | | | | Cooks | | | | <i>Sgt Non Spec</i> | 4 | 4 | |
| Mechanics, Radio | | | | Lineman | | | | Dental Clerk Orderlies | | | | | | | |
| Mechanics, Typewriter | | | | Liseman, Signals | | | | Despatch Riders | | | | ATTACHED BY W.E. | | | |
| Mechanics, Wireless | | | | Lithographers | | | | Draughtsmen, Signals | | | | <i>AACE S'gt</i> | 1 | 1 | |
| Millwrights | | | | Machinists, Metal | | | | Drivers, H.T. | | | | <i>Cpl.</i> | 1 | 1 | |
| Operators, Excavator | 6 | 6 | | Machinists, Wood | | | | Driver Mechanics | 3 | 3 | | <i>Plk.</i> | 6 | 6 | |
| Pattern Maker | | | | Masons | | | | Driver Tptn. Plant | | | | <i>A.A.P.S. Cpl.</i> | 1 | | 1 |
| Pharmacist | | | | Masours | | | | Engine Hands, I.C. | 6 | 5 | 1 | <i>A.A.M.C. Cpl.</i> | 1 | | 1 |
| Photographer, Wet Plate | | | | Mechanics, M.C. Engine | 4 | 5 | | Equipment Repairers | | | | | | | |
| Photewriter | | | | Miners | 12 | 11 | 1 | Farriers | | | | | | | |
| Plumber | 4 | 6 | | Moulders | | | | Filters' Mates | | | | | | | |
| Saw Doctors | | | | Nurses, Trained | | | | Gun Layers | | | | | | | |
| Surveyors | 1 | 1 | | Observation Post Assts. | | | | | | | | | | | |
| CARRIED FORWARD | 54 | 34 | 5 | CARRIED FORWARD | 92 | 92 | 7 | CARRIED FORWARD | 122 | 118 | 11 | Total of columns marked * to agree with columns 4 and 7, and 1 and 10 of Part A, respectively. | 244 | 237 | 19 |

NOTE.—(a) If rank other than private is involved give details on back.

(b) Authorized trades or specialties not included in list will be added as required in spaces provided.

(c) Where A.W.A.S. and/or A.A.M.W.S. personnel are desired show details on back.

(d) Where replacement not desired note accordingly on return by insertion of N.R. in col. "Reinfs. Required."

(e) Where any request or notation is made on back of form, the words "See Back" should be written in one of the blank spaces on this page.

9.9.44
Date of Despatch

Signature of Commander

ORIGINAL

WAR DIARY or INTELLIGENCE SUMMARY.

(Erase heading not required).

27 DEC 1944

Army Form C. 2118
(adapted.)Unit 1 Aust st Squadron R.A.E. (AIR) Date and Time.—From 1 Oct 44 To 11 Oct 44

88 7455

| Place. | Date. | Hour. | Summary of Events and Information. | Remarks and references to Appendices, Diaries, &c. |
|---------|-------|-------|--|---|
| GROVELY | Oct 1 | | Two section 5 Pz Troop detached to 4 Aust Army Troops Coy RAE for works. | (A) <u>Technical & Tactical Rehearsal of Squadrons</u> |
| | 2 | | 6 Pz troop complete works project. <i>n/p</i> | (B) <u>Ins regarding escort duties with tractor co BRISBANE</u> |
| | 3 | | Range practice with own guns for all personnel—scores very poor owing to lack of practical training. <i>n/p</i> | (C) <u>Field return of other ranks</u> |
| | 5 | | Elementary training in small arms—drilling of unit W.F. progressing favourably—95% complete. | (D) <u>Field return of Officers</u> |
| | 6 | | Recapitulation of small arms training continued—Two sections 5 Troop complete work for 4 Aust Army Troops Coy RAE. Lt GILFILLAN rejoins unit ex S.M.E. (Pz) LIVERPOOL. <i>n/p</i> | (E) <u>Adm Ins 120 12/44</u> |
| | 7 | | Start made on loading unit WE at BRITTS Wharf BRISBANE. <i>n/p</i> | (F) <u>Report on voyage of advance guard</u> |
| | 8 | | Vehicle loading commenced at BRITTS Wharf—loading very slow. <i>n/p</i> | (G) <u>movement order - Brisbane to Cairns</u> |
| | 9 | | Range practice by <i>N</i> teams. Loading of vehicles complete. Vehicles loaded comprise—11 D.C.s, 11 jeep trailers, 5 coach trucks, 29 tippers 3 Ingersoll Rand air compressors. <i>n/p</i> | |
| | 10 | | Range practice—personnel selected for training as marksmen. Launch trip organised by Aust Army Activities—50 personnel participate. <i>n/p</i> | |
| | | | Second cholera needle given to personnel | |
| | 11 | | Further range practice for own gunners—marked improvement on | |

WAR DIARY or INTELLIGENCE SUMMARY

Army Form C.2113
(Accepted.)

(Erase heading not required)

Unit 1 Aust Field Squadron R.A.E. (ATF) Date and Time.—From 11 Oct 44 To 19 Oct 44

| Place | Date | Hour | Summary of Events and Information | Remarks and References to Appendices, Diaries, &c. |
|---------|--------|-------|---|--|
| GROVELY | Oct 11 | Cont. | previous shoot - beach picnic at SHORNCLEIFFE - 30 personnel attend. <i>wpl</i> | |
| | 12 | | Loading of unit WF completed - very little damage done during loading. Advance guard comprising 1 officer 40 other ranks embarked per <i>wpl</i> | Report on activities of advance guard given in separate summary. |
| | | | S.S. JUBAL A EARLY. <i>wpl</i> | |
| | 13 | | Sports carnival v 113 Aust con depot - close go. <i>wpl</i> | |
| | 14 | | Five wireless sets No.11 received from ordnance. <i>wpl</i> | |
| | 15 | 1200 | Squadron unit baggage loaded at GROVELY camp at 1200 hrs and conveyed by MT convoy to ROMA STREET Station - loaded on rails. | |
| | | | 3 Officers 187 other ranks embus GROVELY 1900 hrs for EXHIBITION Station entrained exhibition 2030 hrs for north, destination CAIRNS. <i>wpl</i> | |
| | 16 | | Movement north continues - breakfast BUNDABERG - Lunch MACKAY - Dinner ROCKHAMPTON. <i>wpl</i> | |
| | 17 | | Movement still in progress - breakfast BOWEN dinner STUART - conditions on train fair - troops becoming somewhat tired of the journey - weather becoming warmer. On arrival at STUART unit came under control 3 Aust Movement Control group and detraining at OONOOMBA ordered by. - Unit detrained at OONOOMBA siding 1800 hrs & proceeded to 13 Aust Personnel Staging Camp - troops settle in. <i>wpl</i> | |
| | 18 | | No instructions received regarding further movement - personnel proceed on local leave. <i>wpl</i> | |
| | 19 | | Still no instructions regarding movement - personnel proceed proceed to Magnetic Island on leave. <i>wpl</i> | |

WAR DIARY or INTELLIGENCE SUMMARY.

(Erase heading not required).

Army Form C. 2118
(adapted.)

Unit 1 Aust Field Squadron RAR(AIF) Date and Time.—From 20 Oct To 27 Oct

86 7455

| Place. | Date. | Hour. | Summary of Events and Information. | Remarks and references to Appendices, Diaries, &c. |
|----------|--------|-------|--|--|
| OONOOMBA | Oct 20 | | No movement - leave proceeded with - weather conditions very hot and dusty - | |
| | 21 | | Movement control advise unit to proceed to CAIRNS by rail. 2 O/S's accompanying unit baggage entrained at 1600 hrs, remainder comprising 2 officers 187 O/S's entrained OONOOMBA 1930 hrs. | |
| | 22 | | Squadron detrained CAIRNS 0730 hrs - transport waiting - personnel embus and proceed to 16 Aust personnel staging camp. Squadron placed under control | |
| | 23 | | Trial embarkation of troops held - personnel advised of serial numbers. Lecture by div security officer given to troops. Lecture given by Medical Officer on personal hygiene and life in the tropics. | |
| | 24 | | Initial conference held by group Commander Lt-Col FARRELL in respect of embarkation. Anti-mite fluid applied to clothing as a protection against scrub typhus. | |
| | 25 | | Embarkation delayed owing to slight hold up on board transport. Expected date departure not defined. | |
| | 26 | | No embarkation - personnel employed on washing - maintenance and replacement issues of clothing and equipment made to troops | |
| | 27 | | Squadron earned for embarkation at 1400 hrs, 28 Oct - plans initiated | |

WAR DIARY or INTELLIGENCE SUMMARY.

(Erase heading not required).

Army Form C. 2118
(adapted.)

Unit 1 Aust Bd Squadron R.A.F. Date and Time.—From 27 Nov 44 To 31 Oct 45

St. 7455

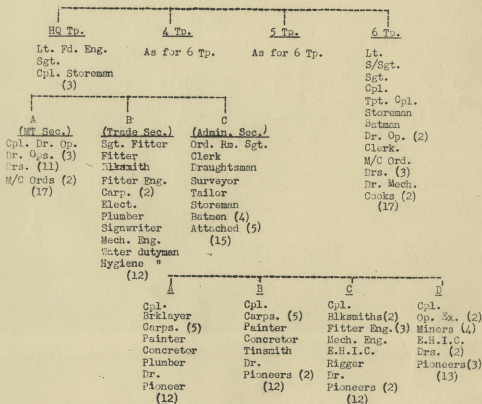
12 OCT 1944

TECHNICAL AND TACTICAL DEPLOYMENT OF SQUADRON.

- The object of this layout is to (a) ensure security;
(b) make for maximum tech efficiency;
(c) form a tactical body.
- The Squadron will be organised as follows:-

Sqn HQ.

O.C.
2 i/c
Capt. Fd. Engr.
SSM
SQMS
Tpt Sgt
(6)



ALLOTMENT OF WEAPONS AND ASSOCIATED STORES AND AMMUNITION.

| Weapon. | Sqn HQ | HQ Tp. | | | | Each Tp. | | | | | Total |
|--------------|-----------|--------|------|------|------|----------|----|----|----|----|-------|
| | | HQ | ASec | BSec | CSec | HQ | A | B | C | D | |
| Bren | | | 2 | 2 | 2 | | 1 | 1 | 1 | 1 | 18 |
| Owens | 1 | 1 | 3 | 2 | 6 | 2 | 2 | 2 | 2 | 2 | 43 |
| Rifles | | 1 | 12 | 10 | 8 | 10 | 10 | 10 | 11 | 11 | 187 |
| Grenade Dis. | | | | 2 | | 2 | | | | | 8 |
| " 36 | | | | | | | | | | | 48 |
| " 63 | | | | | | | | | | | 60 |
| " 68 | | | | | | | | | | | 68 |
| " 75 | | | | | | | | | | | 72 |
| Pistols | 5 | 1 | 2 | | | 4 | | | | | 20 |
| | 6 | 3 | 17 | 12 | 14 | 16 | 12 | 12 | 13 | 13 | |

ALLOTMENT OF STORES (MAIN ITEMS ONLY).

| Item | Sqn HQ | HQ Tp. | | | | Each Tp. | | | | | Remarks |
|-------------------------|-----------|--------|---|---|---|----------|---|---|---|---|--|
| | | HQ | A | B | C | HQ | A | B | C | D | |
| Clothing & Equipment | | x | | | | | | | | | V. small stocks may be carried by tps. |
| Anti-gas | | x | | | | | | | | | |
| Camouflage gear | | x | | | | x | | | | | |
| Cooking gear | | x | | | | x | | | | | |
| Accn stores | | x | | | | x | | | | | |
| Instruments | | x | | | | | | | | | |
| Wirelesses | | x | | | | x | | | | | |
| MT Parts etc. | | x | | | | | | | | | |
| Expense stores | | x | | | | x | | | | | |
| Tech. Eqpt. | | x | | | | x | x | x | x | | |
| Compressors etc. | | | | | | | | | | x | |
| Water supply | | x | | | | | | | | x | |
| Demos. | | x | | | | | | | | x | |
| Tool kits | | | | | | | | | | x | |
| D.D. Eqpt. | | | | x | | | x | x | x | x | |
| Mine detectors | | x | | | | | | | | | |
| | | | | | | | x | x | x | x | |

LOADING AND ALLOTMENT OF VEHICLES.

(a) Vehicles will be allotted as follows:-

| | <u>Jeeps</u> | <u>Trailers</u> | <u>3-ton winch</u> | <u>2-ton tipping</u> |
|----------|--------------|-----------------|--------------------|----------------------|
| HQ | 5 | 5 | 2 | 2 |
| Each tp. | 2 | 2 | 1 | 6 |

(b) Loading:-

HEADQUARTERS.

| Ser. No. | Vehicle. | Personnel. | Stores etc. |
|----------|----------------|---|--|
| 1 | Jeep & trailer | OC, Dvr, Batman, SSM | |
| 2 | do | 2 i/c, Dvr, Batman, O/R Sgt. | Ord. Room gear. |
| 3 | do | Fd. Eng. 1, Dvr, Batman, Svyr | Surveyor & drght gear |
| 4 | do | Fd. Eng. 2, Dr.Op.(2), Batman | Wireless stn. |
| 5 | do | Tpt Sgt, Dr.Op. Cpl, Dr. Op, drght | Wireless stn. |
| 6 | Winch | S.MS, Storemen, Tailor, RAP Cpl, Q Store. | |
| | | Postal cpl, AMCC pte, dvr. | |
| 7 | Tipper | AACC & cooks' offiders (2) | Rations & cooking gear. |
| 8 | Tipper | Remainder of 6 personnel, tpt sgt | Misc. Q Stores, anti-malarial stores etc., accn. stores. |
| 9 | Winch | B Sec | Sec. tools & eqpt. MT parts. |

EACH TROOP.

| Ser. No. | Vehicle. | Personnel. | Stores etc. |
|----------|----------------|--|---|
| 1 | Jeep & trailer | Tp comdr, batman, dvr, HQ cpl. | Ord. room gear etc. |
| 2 | do | Tp S/Sgt, Dr.Ops(2), Tpt Cpl. | Wireless stn. |
| 3 | Tipper | A Sec. | A Sec. tools. |
| 4 | Tipper | B Sec. | B Sec. tools. |
| 5 | Tipper | C Sec. | C Sec. tools. |
| 6 | Tipper | D Sec less E.H.I.C. | # D Sec. tools less compressor & tools. |
| 7 | Tipper | E.H.I.C. | # Compressor & tools. |
| 8 | Tipper | Tp Sgt, storeman, clerk, cooks, dvr. | Cooking gear, accn stores rations. |
| 9 | Winch | Dvr. Mech, remainder of tp HQ personnel. | MT Stores, misc. Q stores. |

If necessary, ser. 6 carries compressor tools & D Sec, and Ser. 7 D4 tractor

Distribution:

Offrs. (7)
SSM.
SQMS.
Tpt. Sgt.
Dvr. Op. Cpl.
AACC Sgt.
W.D. (2).
File.

Major,
O.C. 1 Aust Fd Sqn R.A.E.

1 Aust Rd Squadron RAS(AIF)
Australia.
14 Oct 44.

SECRET.

INSTRUCTION REGARDING REPORT DUTIES WITH TRACTORS AT BRISBANE.

1. L/Cpl EGAN will escort 3 tractors Rd from BRISBANE to destination of 1 Aust Rd Sqn RAS (AIF) Authority D.A.Q.R.S (Rail) Move Milbess BRISBANE and travel with them for the entire journey.
2. You will be moved to Kelings Camp on authority Capt Armstrong Move BRISBANE and constitute the rear party for 1 Aust Rd Sqn.
3. You will report by phone to Capt Armstrong Victoria Barracks BRISBANE ext 338 at 0830 hrs Mon 16 Oct - state who you are and your duty and request instructions.
4. At present it is proposed that tractors will move by rail on BRISBANE on 16 Oct per goods train to TONKIVILLE for on movement.
5. Ensure before move you have -
 - (a) Movement order - Received from Move BRISBANE.
 - (b) Nominal Rolls - Received from Kelings Camp.
 - (c) Copy of consignment notes - R.T.O.
 - (d) Copy of receipt for the tractors - R.A.S. Stores' Dump ALBION PARK.
 - (e) Any other necessary documents.
6. The tractors are at present at RAS Stores' Dump ALBION PARK.
7. Your contacts in BRISBANE are -
 - (a) For Move arrangements - Capt Armstrong D.A.Q.R.S. (Rail) Move Branch Vic Barracks.
 - (b) For any difficulties - Capt Collins Adjt 1 GS (Wm) AUSTRALIAN AR
- At any staging or transshipping point contact -
 - (a) R.T.O. or R.S.O. (Substation staff officer) which ever is applicable.
 - (b) A C.R.E. D.C.R.E. or Adjt of an R.A.S. unit for any assistance or advice.
8. You are to be impressed with the necessity of energetically "pushing" things along. The early receipt of these tractors by the unit may be vital.
9. Ensure that you are at all times smartly turned out and smart in movements, be on the job all the time, be courteous to officers etc and don't take NO for an answer.
10. Keep a diary entered daily of your progress any difficulties and reasons and the action you took to overcome them. The persons you contacted and why, any history of the tractors, e.g. if they were dropped into the sea or badly wet etc and which one.
11. Write a letter to me each week on how things are going and if possible (get advice of an officer) indicate if you are in difficulties and how.
12. Ensure you have iodine and take it daily also suggest you have few aprons, iodine (or equivalent) bandage.

W. J. Bole
Major
O.C. 1 Aust Rd Squadron RAS(AIF)

Distribution
L/Cpl Egan (2)
War Diary (2)
File (1)

Army Form W 200a
(Adapted) (Page 1)
(Revised Jan., 1947)

40 / 44 (Serial No.)

1 Aust Field Squadron RAE Unit

Army Form W.3006
(Adapted) (Page 2)
(Revised Jan., 1943)
49 44 (Serial No.

PART D.—NOMINAL ROLL OF OFFICERS ON POSTED STRENGTH

At 0600 Hrs. Saturday 14 / 10 / 194. 4 (Total to agree with Columns 4 and 7 of Part A.)

~~SECRET~~ - ~~REL~~

| 1 | 2 | 3 | 4 | 5 | 6 | 7 | 8 | 9 | 10 |
|-------------------------|----------------|-----------------|-----------------|-------------------|--------------------------|-----------------|-----------------|----------------|-----------------------|
| W.E. RESIDUOUS ATTACHED | | | | | ATTACHED ALLOWED BY W.E. | | | | |
| Notes To Be Recorded. | Deficient W.E. | Surplus to W.E. | Point Strength. | DETAIL | Area of Corps | Point Strength. | Surplus to W.E. | Deficient W.E. | Notes To Be Recorded. |
| | | | | Lieut.-Colonels | | | | | |
| | | | | Majors | | | | | |
| | | | | Captains | | | | | |
| | | | | Lieutenants | | | | | |
| | | | | Quarter-masters | | | | | |
| | | | | A.A.S. and | | | | | |
| | | | | A.A.M.W.S. Offrs. | | | | | |
| | | | | Chinese Counting | | | | | |
| | | | | sa Offrs. | | | | | |

| | |
|---|------|
| Analysis of Part A to be shown here by ALL units. Only units notified in para. 39 of instructions for compilation of forms will complete Part E(1) & E(2). | A. |
| | E(1) |

* Insert detail of higher ranks as necessary.

* * Personnel belonging to a category not provided for in the analysis will be shown in this col. Particulars will be shown, e.g., 20 U.K. Forces; 10 N.E. Forces.

PART B.—PARTICULARS OF OFFICERS JOINED OR QUITTED DURING WEEK

OFFICERS JOINED DURING WEEK

[illegible]

OFFICERS QUITTED DURING WEEK

[illegible]

PART C.—DESCRIPTION OF OFFICERS WHOSE RETURN TO _____ (Unit) IS
PARTICULARLY REQUESTED. ____/____/194____

[illegible][illegible]

PART E.—NOMINAL ROLL OF OFFICERS ATTACHED FROM OTHER UNITS.

[illegible]

14 Oct 64
Date of Despatch

O.C. 1 Aust Fd Squadron RAN(AIF)

Major

At 0640 Hrs. Saturday 14/10/1944 1 Aust Rd Sq. RA (Unit)

W.E. 1 / 11 / 3 OFFRS. 7 O.R's. 233 + OFFRS. - O.R's. 11 ATT. BY W.E.

Part A. Posted Strength, Surplus or Reinforcements Required.

Part D. Description of Other Ranks Whose Return To _____ (Unit) is Particularly Requested. ____/____/194

PART E. Detail of Present Strength and Reinforcements required as shown in Part A of Army Form W.3009 at 0600 Hours Saturday 14/10/1944.

(c) Authorized trades or specialists not included in list will be added as required in spaces provided.

(c) Where any request or notation is made on back of form, the words "See Back" should be written in one of the blank spaces on this page.

14 Oct 44

Date of Despatch _____ Signature of Commander _____

x see notes on back.

L.H.Q. Press—516—10/43—416m.

SECRET
Appendix 'E'

1 Aust. Fd. Sqn., R.A.E. (A.I.F.)
AUSTRALIA

12 Oct. 1944.

To Lt Price

ADMINISTRATION INSTRUCTION NO. 12/44

1. Lt. Price i/c and 40 O.R.s will constitute advance party. Lt. Price will have complete powers (including punishments) of a detachment Commander under Field Rank.

2. On voyage you as O.C. troops ref. M.C.O. Q585 have complete powers of all A.M.F. personnel. You need to ensure that discipline is maintained and suggest you immediately establish a routine e.g. reveille 0645, breakfast 0730.

Kits etc. ready for inspection 0900

All personnel out on deck until 1200 hours.

Run organised games if space permits.

Ensure all personnel 1. Fd. Sqn., shave daily, clean arms and boots, etc.

Insist on all personnel carrying water bottles and life jackets at all times, and wearing or carrying a hat.

Arrange concerts if possible or sing songs in the evening.

3. At area of disembarkation carry out the following duties in priority as marked:-

Priority:

1. Ensure thorough check that all stores etc., ^{as} are unloaded and prepare indents immediately for lost or damaged equipment, and forward to relevant D.A.D.O.S. or relevant R.A.E. channels.

2. Report to the Senior Engineer Officer in area to get the plot and give him information as to (a.):

- (a) Your composition
- (b) Our composition
- (c) Any serious store deficiencies that have occurred enroute.
- (d) Any further useful information.

3. Organise Camp, including:-

- (a) Rationing
- (b) Medical arrangements
- (c) Security arrangements
- (d) Mail, pay, and Ordnance.
- (e) Amenities
- (f) Anti-malarial, hygiene, and water arrangements.
- (g) Tent-lines, latrines, kitchens, etc.

4. Maintenance all stores, equipment, and transport.

5. Arrangements including as for priority 3 above for arrival of main party.

4. General

Establish and maintain the normal Squadron routine (subject to local orders) Remember you are responsible for your own security, including the men, stores, vehicles, etc.

You can establish a Canteen out of the £30. 0. 0 of Regimental Funds - ensure close checking system is maintained.

Procure maps of Area and environments, if possible, at least three copies of each (tact. and strat. sheets)

Procure list of Returns, etc. and ensure they are submitted accurately and on time.

Write a personal letter to me each week on general information.

.....(Major)
O.C. 1 Fd. Sqn., R.A.E., A.I.F.

W.P.

L.H.Q.
MELBOURNE

REPORT ON VOYAGE FROM BRISBANE TO AQUM ON S.S. JUBAL EARLY

By

Lt. OLIVE J. PRICE - 1 Aust FG Sqn RAE - OC TROOPS

Date : 21 Oct 44

1. Departure : 4 Offrs & 177 ORs embarked on S.S. JUBAL EARLY at 0800 hrs on Thursday 12 Oct 44 and departed BRISBANE at approximately 120930 hrs.
2. Intermediate Ports : The vessel did not berth at any port en-route.
3. Disembarkation : Arrived at destination, AQUM, at 1200 hrs 21 Oct 44 and all troops except a rear party of 15 disembarked at 1200 hrs. 22 Oct 44.
4. Health en Route : No cases requiring medical attention en route - health of troops good - an RAP was established on the troop deck.
5. Training : Owing to limited deck space little organised training could be carried out but one hatch was reserved for PT and medicine balls skipping ropes etc were used to exercise the troops.
6. Discipline : Although the draft consisted of some 22 serials the discipline was particularly good. Co-operation from officers and NCOs of the various units was of the best.

Inspections were carried out each day of quarters, kitchens, latrines and the men for general cleanliness- shaving etc.

Routine Orders concerning discipline - blackout restrictions and parades were published two hours after embarkation.

Rifle inspections were held en route to check -
(i) that each man had his rifle
(ii) that it was suitably protected from salt spray etc.

Atebrin parades were held each morning prior to the breakfast parade.
7. Messing Facilities : The cooking arrangements and kitchen facilities were quite satisfactory. The meals, considering the rations, were good, however it is suggested that
 - (a) some freezing space be obtained for at least a weeks supply of fresh meat, butter etc.
 - (b) Fresh fruit - apples, bananas, pineapples and other natural aperients form a considerable portion of the rations
8. Pay : No paying facilities were made available on the voyage.
9. Losses or Deficiencies : No losses requiring investigation occurred en route.
10. Fresh Water Supply : Though limited the supply of fresh water was quite adequate - salt water showers were also available.

*Appendix G**acked. F.S. 155.
updt.*M.C.G. 56/1/2055
M.C.G. 56/1/2844
M.C.G. 56/1/2870

M.C.O. Q/520

ALLIED LAND FORCES IN SOUTHWEST PACIFIC AREAH.Q. Movement Control,
Victoria Barracks,
BRISBANE.

No. 6804.

13 Oct 44.

MOVEMENT OF VARIOUS A.M.F. PERSONNEL
TO DESTINATIONS.

The personnel enumerated hereunder will move to destinations Sunday,
15 Oct 44, in accordance with the following arrangements:-

| SERIAL | UNIT | STRENGTH All Ranks | STORES Tons D.W. | DESTINATION | AUTHORITY |
|--------------|---|--------------------------|---------------------|------------------------------|---------------------------|
| 1 | 1 Aust Fd Sqn | 198 | 12 | CAIRNS for on movement | Adv.L.H.Q.QM3344 |
| 2 | 2/3 Aust Flash Spotting Bty | 21 | | NAFEE | L.H.Q. 5D66488 |
| 3 | 4 Aust Survey Bty | 19 | | " | " |
| 4 | Various A.M.F. Duties ex 1. A.F.S.C. | 139 | 12 | 1 Aust Corps Area | 44/10/6 |
| | | 380 | 12 | | |

2. LOADING OF STORES:

Stores will be loaded at ROMA STREET at 1400 hrs, Sunday, 15 Oct 44, into
Baggage Car to be attached to personnel train.

3. ENTRAINMENT:

Personnel will report to R.T.O. EXHIBITION at 1915 hrs, Sunday, 15 Oct 44,
and entrain under his direction.

4. TIME TABLE:

| | | |
|-------|--------------|--------------------------------------|
| 15/10 | EXHIBITION | Depart 2010 hrs |
| 16/10 | BUNDABERG | arrive 0510 hrs depart 0610 hrs R |
| | ROCKHAMPTON | arrive 1315 hrs depart 1515 hrs R |
| | ST. LAWRENCE | arrive 1925 hrs depart 2025 hrs R |
| 17/10 | BOWEN | arrive 0620 hrs depart 0730 hrs R |
| | STUART | arrive 1255 hrs depart 1355 hrs X |
| | TOWNSVILLE | arrive 1420 hrs |
| 18/10 | CAIRNS | arrive 0315 hrs |
| | REDLYNCH | E.T.A. 0345 hrs |

R - Railway Refreshment Rooms
X - Army Feeding Points
All Timings Zone K

7. when to use detour

M.C.G. 55/1/2055

M.C.G. 55/1/2811

M.C.G. 55/1/2570

M.C.O. Q/620

2 -

5. CONSIGNMENT NOTES, RAIL WARRANTS AND MEAL REQUISITIONS:

R.T.O. EXHIBITION will issue

Serial 1

Consignment Notes, and Rail Warrants, Bulk Second Class, to CAIRNS.

Serials 2, 3, and 4

Rail Warrants, Bulk Second Class, to REDLYNCH.

Meal Requisitions, all Serials, as per Time Table.

Personnel, including Officers, will use own mess kits at all Railway Refreshment Rooms.

6. ARRIVAL TOWNSVILLE:

On movement as arranged by 10 Aust M. C. Gp.

7. STORES ex Serials 2 and 3:

Twenty (20) tons Unit Stores ex Serials 2 and 3 were transhipped at CLAPHAM on Thursday; 12 Oct 44, and departed by Ordinary Goods Services, consigned TOLGA.

Two (2) Escorts travelling with equipment, on Travelling Allowance to destination.

8. O.C. TRAIN:

Copy of Standing Orders for Os. C. Troop Trains will be handed to Officer Commanding.

O.C. Train will ensure that no civilians are permitted to travel on train under his command.

O.C. Train will take measures to prevent lighted matches, cigarette butts, etc., being thrown from train, and ensure that standing crops, such as pineapples, and sugar cane, are not interfered with, in any way, during halts of trains.

Acknowledgment is requested.

Signed at 12 15 00

DISTRIBUTION:

| | | | | | |
|-------|--|---------|-------|---------------------|-------------|
| 1 | L.H.Q. (Movement) | AIRMAIL | 32 | R.T.O. ROMA STREET | |
| 2/4 | Adv.L.H.Q. (Mov) | | 33 | " ROCKHAMPTON | AIRMAIL |
| 5/11 | H.Q.'land L. of C. Area | | 34 | " MACKAY | " |
| 12/18 | 3 Aust M. C. Gp. | | 35 | " TOWNSVILLE | DIRECT DEL. |
| 19 | Major HUGHES, "Q" Maintenance | | 36 | 1 L. of C. Sub Area | " |
| 20 | 2 L. of C. Sub-Area | | 37 | 10 Aust M.C.Gp. | " |
| 21 | D.A.D. Posts | | 38 | Movements CAIRNS | AIRMAIL |
| 22 | M.F.O. | | 39/40 | 1 Aust Corps | " |
| 23 | O.C. Train, C/- R.T.O. ROMA STREET | | 41/42 | War Diary | |
| 24 | C.S.O., GROVELY S.D.R. | | 43/44 | File | |
| 25/26 | 1 Aust Fd Sqn, C/O C.S.O. GROVELY S.D.R. | | | | |
| 27 | 1 Aust Personnel Staging Camp | " | | | |
| 28 | 2/3 Aust F.Sp. Bty., C/- 1 A.F.S.C. | " | | | |
| 29 | 4 Aust Svy Bty, | " | | | |
| 30/31 | D.C.Os., | " | | | |

ADVANCE GUARD.

WAR DIARY or ~~INTELLIGENCE~~ SUMMARY.

(Erase heading not required.)

Army Form C. 2118.
(adapted.)

Unit 1 AUST FD SQN RAE (AIF)

Date and Time.—From 0001K 12 Oct 44 To 2359I 1 Nov 44

| Place. | Date. | Hour. | Summary of Events and Information. | Remarks and references to Appendices, Diaries, &c. |
|-----------|-----------|-------|--|--|
| BRISBANE. | 12 Oct 44 | 0700 | Lt PRICE and 40 ORs being advance party, march out from GROVELLY at 0700 hrs, embark on X2468 (SS JUBAL A EARLY) at 0830, and put from wharf at 0930 hrs. Troops settle in in No 1 hatch - space limited but reasonable comfort assured. Comforts Fund parcels issued at evening meal. | |
| AT SEA | 13 Oct 44 | | Voyage north continues uneventfully. Daily routine commences 0645 hrs reveille - boat drill 0900 hrs. Troop quarters inspected by Lt PRICE. Sea very calm, no seasickness. | |
| AT SEA | 14 Oct 44 | | 0645 hrs reveille. report from wheelhouse that at 12 O'clock last night we were 80 miles off BUNDABERG. | |
| | 15 Oct 44 | | 4th day at sea - personnel adapting themselves well to the rough conditions. | |
| | 16 Oct 44 | | Very hot in hold as tropics are approached - majority of troops sleeping on deck now. Very little sickness despite rough sea. Arms inspected at 1000 hrs, all found to be in quite good condition. | |
| | 17 Oct 44 | 0815 | Land sighted. | |
| | | 0930 | Entered China Straights. Were met here by a torpedo boat and led safely through the reef past SAMARI and eventually into MILNEBAY. | |
| | 18 Oct 44 | | AURO BAY passed in the night but we still have land on both sides, the mainland on the left and on the right a string of islands ending with GOODENOUGH AND MUDLARK. | |

L.

By Authority: L. F. JOHNSTON, Commonwealth Government Printer, Canberra.

(Erase heading not required.)

Unit 1 AUST FD SQN RAE (AIF)

Date and Time.—From 0001K 12 Oct 44 To 2359I 17 Oct 44

| Place. | Date. | Hour. | Summary of Events and Information. | Remarks and references to Appendices, Diaries, &c. |
|---------|-----------|-------|---|--|
| AT SEA | 18 Oct 44 | | Usual inspection by OC troops and parade for inspection at 0915 hrs on No. 1 Hatch. | |
| | | | The coastline loses its ruggedness as we move past BUNA and GONA and at midday we enter the HUON GULF leaving LAE well over on our left. | |
| | 19 Oct 44 | | Nothing eventful as we carry out the usual daily routine with inspection and PT parades. | |
| | 20 Oct 44 | | WE are now nearing our destination, troops warned to be packed ready for disembarkation as we move into the shallow waters near AITAPE. During the night and yesterday we passed along the MACLEAY Coast and UMBOI Island and moved on past the rugged peaks of the FINNISTAIRES and on the starboard LONG ISLAND - have made better time than we expected. | |
| AITAPE. | | 1200 | 'JUBAL A EARLY' eventually strikes anchor. | |
| | | 1400 | Lt PRICE goes ashore - contacts Movement Control and DAQM Maj HUMAN. | |
| | | | Party of US engineers come on board with barges to unload vehicles etc., heavy swell prevents them taking much off - manage however to get two trucks off, these are slightly battered against the side of the ship but the damage is negligible. | |
| | | | Majority of troops left on board | |
| | 21 Oct 44 | | Swell at night very little sleep for those on board. Heavy rain forces us below. | |
| | | | Only two jeeps ashore all day - heavy swell prevents unloading to any extent. | |
| | | | Lt PRICE contacts 54 D.C.R.E. - Maj JEFFRIES - who had disembarked from KATOOMBA. | |
| | | | No particular instructions. | |

(Erase heading not required.)

Unit 1 AUST FD SQN RAE (AIF)

Date and Time.—From 00011112 Oct 44 To 2359 I 11 00 44

| Place. | Date. | Hour. | Summary of Events and Information. | Remarks and references to Appendices, Diaries, &c. |
|---------|-----------|-------|---|--|
| AITAPE. | 21 Oct 44 | | Camp site pointed out - quite near beach - should lend itself well to improvements. | |
| | 22 Oct 44 | | Better unloading to-day - ships moved to shelter of TUMLED ISLAND out total now 3 jeeps, 5 winches and 1 tipper. Lt PRICE contacts Staff Capt 'Q' - Capt WOODS re replacement of cooking gear - none available at present - but will endeavour to assist in a couple of days. | |
| | | | Camp site inspected generally and arrangements made with 106 Vehicle Park(neighbourouring unit to tent and feed 25 personnel) - these pers disembarked and 15 left on ship to watch stores etc. | |
| | | | Cpl SHAND contacts DID - ref rations and POL, etc., indented for rations commence to draw on 24th for 25th. | |
| | | | Feelers among USA forces for bulldozers. | |
| | 23 Oct 44 | | Lt PRICE stays on shore, supervising unloading and liaising with various HQ's. | |
| | | | Lt PRICE stays on shore, supervising unloading and liaising | |
| | | | 3 unsuccessful attempts by Lt PRICE to get bulldozer - efforts rewarded as 118 Task Force Engrs supply dozer and driver. | |
| | | | Doxer worked on Orderly Room site and transport area - making quite a fair job, | |
| | | | Confere ce with DCRE, DADOS and Laundry Unit - Laundry taking a strip of transport area. | |

ADVANCE GUARD.

WAR DIARY or INTELLIGENCE SUMMARY

Army Form C.2118
(adapted.)

(Erase heading not required.)

Unit 1 Aust Field Squadron R.A.E. (AIF)Date and Time. From 0001K 12 Oct 44To 2359I 1 Nov 44.

| Place | Date | Hour | Summary of Events and Information | Remarks and references to Appendices, Diaries, &c. |
|--------|-----------|------|---|--|
| AITAPE | 23 Oct 44 | | D.A.Q.M.G. contacted regarding Squadron movements - expected to arrive in 5 days. | |
| | | | All jeeps and trailers offloaded, still several tippers to be offloaded. Unloading being severely hampered by rough surf. | |
| | | | Lt Boyd I.O. contacted and three maps of area obtained. | S |
| | | | | |
| | 24 Oct 44 | | Lt Price to attend CO's conference at Base at 0800 hrs. | |
| | | | Dozer continues on MT area. Stores on trucks unloaded - attempts being made to change out area - protest from Sqn wins out. | |
| | | | All transport now off vessel and moved to vehicle park. - very little damage done to transport in transit. | |
| | | | Remainder of personnel disembarked. Two personnel sent on board with unloading party of U.S personnel to supervise unloading of unit equipment. | |
| | | | Squadron orderly room set up and functioning. | S |
| | 25 Oct 44 | | Five jeeps report to Base for distribution (available only until main body arrives | |

WAR DIARY or INTELLIGENCE SUMMARY.

(Erase heading not required.)

Unit 1. AUST FD SQN RAE (AIF) Date and Time.—From 0001K 12 Oct 44 To 2359I 17 Oct 44

| Place. | Date. | Hour. | Summary of Events and Information. | Remarks and references to Appendices, Diaries, &c. |
|---------|------------|-------|---|--|
| AITAPE. | 25 Oct 44 | | DADMS contacted re atebrine supplies. | |
| | | | An endeavour being made for the construction of native huts. Capt WOOD advises that if Sqn erects frame work, natives and palm will be supplied. as required. | |
| | | | Canteen services still unavailable. | |
| | 26 Oct 44. | | Dozer no longer in operation - 3 tippers working 1 day in 118th coral pit approval from Capt LEBERMANS's staff. | |
| | | | Tents erected- Sqn moves from 106 Veh Park and settles in - stores expected to be off loaded to-night. | |
| | | | Arranged with Capt LEBERMAN 118th to use 3 tippers to cart to our own area. | |
| | | | Working party of 10 men on latrines and stores. | |
| | 27 Oct 44 | | Working party of 10 - return stores re Engr Dump - on level ground and erect US tent (temporary kitchen). Work commenced on 'Q' store. | |
| | | | Tippers start carting gravel - 10 tippers later reduced to 8. | |
| | | | Jeeps and wigh trucks also be use to capacity. | |
| | | | Maj WEST contacted regarding borrowing of dozer. | |
| | | | Movements advise remainder of Sqn delayed. | |
| | | | Lt PRICE attends canteen conference. | |

WAR DIARY or INTELLIGENCE SUMMARY

Army Form C.2148
(adapted)

(Erase heading not required.)

Unit 1 Aust Field Squadron R.A.E.

Date and Time. From 0001K 12 Oct 44 To 2359I 1 Nov 44

| Place | Date | Hour | Summary of Events and Information | Remarks and references to Appendices, Diaries, &c. |
|--------|-----------|------|--|--|
| AITAPE | 27 Oct 44 | | Stores still on board - swell prevents unloading. | <i>[initials]</i> |
| | 28 Oct 44 | | Still no stores off loaded. | |
| | | | Major JEFFRIES contacted regarding supply of doses. | <i>[initials]</i> |
| | | | Staff Capt 'Q' contacted regarding installation of telephone - have low priority. | |
| | 29 Oct 44 | | Rest day - five tippers and three winch trucks working. | |
| | 30 Oct 44 | | Camp construction continues - personnel working hard. | |
| | 1 Nov 44 | | Preparations made for the arrival of main body of Squadron due to disembark at about 1200 hours. | <i>[initials]</i> |
| | | | Lt Price hands over to Major GURLEWIS at beachhead. | |
| | | | | <i>[signature]</i> |
| | | | | |
| | | | | |

WAR DIARY or INTELLIGENCE SUMMARY. SHEET

(Erase heading not required.)

ORIGINAL

Army Form 2, 2118.
(adapted.)

28 DEC 1944

Unit 1 AUST PD SQN RAE (AIF)

Date and Time.—From 00011 1 Nov 44 To 23591 30 Nov 44.

| Place. | Date. | Hour. | Summary of Events and Information. | Remarks and references to Appendices, Diaries, &c. |
|---------|----------|-------|--|--|
| AITAPE. | 1 Nov 44 | 1000 | Ship (SS 'MEXICO') anchors AITAPE. Sqn lunches 1115 hrs, disembarkation commences 1215 hrs - 3 offrs 187 ORs land AITAPE, embus for camp site. Advance guard have accn available for billeting troops for night. Unloading of stores and equipment commence 1500 hrs. Lt PRICE hands over to Maj CURLEWIS report on movement of advance guard and outline of local proceedings. Three personnel evacuated to USA hospital on landing. Sqn under cmd of 3 Aust Base Sub Area. OC reports to Lt Col LANG, Comd 3 Aust Base Sub Area. | <i>movement order for tractor & rocket</i> |
| | 2 Nov 44 | | Start made on camp site. Works programme not commenced. Sqn stores being unloaded SS 'MEXICO' and 'JUBAL A EARLY'. | <i>wpb</i> |
| | 3 Nov 44 | | Work continues on camp site. Balance of equipment received from SS 'JUBAL A EARLY' and SS 'MEXICO', equipment mostly in good condition. Inventory of stores received not finalised. However, it is thought that losses in transit have been moderate. Survey of new hospital site made, by OC and Maj JEFFRIES (54 Aust DCRE). | <i>wpb</i> |
| | 4 Nov 44 | | Initial sounding taken on site where 207' bridge is to be constructed. 6 Fd Troop allocated task of construction under control of Lt PRICE. Movement control advised of non arrival of 13 crates unit equipment. | <i>wpb</i> |
| | 5 Nov 44 | | br Recce party proceeded to proposed site and take further sounding. bivouac site adjacent to site located. | <i>wpb</i> |
| | 6 Nov 44 | | 1 Offr and 48 ORs proceeded to bivouac area, initial start made in construction of bridge. | <i>wpb</i> |
| | 7 Nov 44 | | Started work on refrigeration system in area, excavation and layout commenced. Visit from Lt Col BEECHMORE, SORE, First Aust Army. | <i>wpb</i> |

WAR DIARY or INTELLIGENCE/SUMMARY

(Erase heading not required.)

SHEET 2.

Army Form 2118.
(adapted.)

Unit 1 AUST FD SQN RAE (AIF) Date and Time.—From 0001 1 Nov 44 To 2359 30 Nov 44.

| Place. | Date. | Hour. | Summary of Events and Information. | Remarks and references to Appendices, Diaries, &c. |
|---------|-----------|-------|--|--|
| AITAPE. | 8 Nov 44 | | Work on refrigerator system held up as all equipment not available. Job to be recommenced on arrival of plant and revised plans. Work proceeding on br construction. | w.s.b. |
| | 9 Nov 44 | | Projects proceeding favourably. | w.s.b. |
| | 10 Nov 44 | | Erection of br well under way - progress satisfactory - expected to be completed within the week. | w.s.b. |
| | 11 Nov 44 | | | |
| | 12 Nov 44 | | Initial plans and specifications received for hospital to be constructed. 4 Fd Tp allocated task - stand down - camp works proceed. | w.s.b. |
| | 13 Nov 44 | | Clearing work commenced on site of ASD job - 4 Fd Troop commence work at hospital, anticipated time of completion 4 weeks. Access roads commenced. | w.s.b. |
| | | | Work on installation of water point near ST ANNA CK commenced. Expected date of completion 24 Nov 44. | |
| | | | Lt MULVEY evacuated to hospital - Bronchitis. | |
| | 14 Nov 44 | | 11 personnel proceed on recreational leave. | w.s.b. |
| | 16 Nov 44 | | Initial sounding taken at site where LCM ramp is to be installed. | w.s.b. |

L.

By Authority: L. F. JOHNSON, Commonwealth Government Printer, Canberra.

WAR DIARY or INTELLIGENCE SUMMARY.

(Erase heading not required.)

Army Form C. 2118.
(adapted.)

Unit 1 Aust Field Squadron RAE (AIF) Date and Time.—From 00011 1 Nov 44 To 23591 30 Nov 44.

| Place. | Date. | Hour. | Summary of Events and Information. | Remarks and references to Appendices, Diaries, &c. |
|--------|-----------|-------|---|--|
| AITAPE | 18 Nov 44 | | Construction of bridge complete - in trial one pier sank 18" in mud necessitating lifting and placing of a supplementary pier. Ten personnel proceed on recreational leave. | <i>WAB</i> |
| | 19 Nov 44 | | Capt NEVILE taken on strength from 62 Aust Corps Fd Park Coy - Appointed 2 i/c. All preparations made for start on LCM landing ramp. Stand - down | <i>WAB</i> |
| | 20 Nov 44 | | Work commences on landing ramp working two six hour shifts. 6 Fd troop under supervision of Lt PRICE in charge of construction. | <i>WAB</i> |
| | 21 Nov 44 | | All works proceeding satisfactorily. | <i>WAB</i> |
| | 22 Nov 44 | | | |
| | 23 Nov 44 | | | |
| | 24 Nov 44 | | | |
| | 25 Nov 44 | | Lt MULVEY rejoined unit from hospital. | <i>WAB</i> |
| | 26 Nov 44 | | Stand-down general clean up of camp area - Anti mite fluid applied to clothing as a protection against scrub typhus. | <i>WAB</i> |
| | 27 Nov 44 | | | |
| | 28 Nov 44 | | Inspection of camp area by Maj-General STEVENS, GOC 6 Aust Div - 2 Personnel and 3 R4 tractors arrived by (S.S. BONTEKOE) from mainland | <i>WAB</i> |

L.

By Authority: L. F. JOHNSTON, Commonwealth Government Printer, Canberra.

(Erase heading not required.)

Army Form C, 2118.
(adapted.)

Unit 1 AUST FD SQN RAE (AIF) Date and Time.—From 0001I 1 Nov 44 To 2359I 30 Nov 44.

[illegible]

1 Aust Fd Sqn RAE (AIF)

No.
Date 21 NOV 1944

AUSTRALIAN MILITARY FORCES

CONFIDENTIAL

Movement Control,
ATTAF. 1
20 Nov. 44

Copy No. 17

MOVEMENT CONTROL ORDER NO. G15
"BONTEKOE"

1. SECURITY All orders regarding movement are SECRET. The contents of this order will be divulged only to personnel where necessary for the execution of the move. On completion of move all copies of this order, except where required for records, will be burnt.
2. REFERENCES MOV T'VILLE QM3445 and QM3450
3. PERSONNEL TO BE DISEMBARKED "BONTEKOE" is expected to arrive at this port at an early date with personnel for disembarkation as per Appendix "A" to this order (over) Time and date of disembarkation will be notified by Movement Control. Disembarkation will be under direction of Embarkation Staff Officer. Troops will be prepared to disembark fully equipped and carrying one days landing rations.
4. CARGO FOR DISCHARGE Details of cargo and vehicles for discharge are contained in Appendix "A" to this order (over). Time and date of discharge will be advised by Movement Control. Discharge will be under direction of Dock's Supt.
5. UNAUTHORISED PERSONNEL No personnel will be permitted to board vessel unless in possession of current Ship's Duty Pass.
6. UNIT REPRESENTATIVES Consignee Units will ensure that four (4) representatives are available to receive and check cargo. Sufficient Units drivers must be supplied by Units to handle all unit vehicles. Checkers and drivers to report to Movement Cont. Office on beach. Guides for details being disembarked will report to ESO on beach for duty during disembarkation.
7. MOVE FROM BEACH Move from beach will be by MT under arrangements Movement Control.
8. P.A.D. In the event of an air raid developing during or subsequent to disembarkation, those troops on board vessel will remain aboard and conform to orders of Ship's Master Those troops disembarked will disperse in orderly fashion and regroup immediately the all clear is sounded.
9. MALARIAL PRECAUTIONS Order of dress for troops disembarked between the hours of 0630 and 1700 will be - Shirts, long slacks and gaiters. Sleeves may be rolled. If disembarked between the hours of 1800 and 0630, order of dress will be as above except that sleeves will be rolled DOWN and buttoned at the wrist.

All troops will disembark with mosquito net and repellent handy and ready for immediate use.

St. Byrne
.....Capt.
Staff Capt (M).
8 Aust. M.C. Gp. (AIF)

DISTRIBUTION

| | |
|--------------------------|-------|
| HQ 3 Aust Base Sub Area | 1-3 |
| Adv. HQ 6 Aust. Div. | 4-10 |
| O.C. Troops | 11 |
| DADST 3 ARSA | 12 |
| Beach Tpt Offr | 13 |
| E.M.C. | 14 |
| Dock's Supt | 15-16 |
| E.S.O. | 17-18 |
| 1 Aust Adv 2 Ech Liaison | 19 |
| DAPM | 20 |
| Port Director | 21 |
| 7 TMO RAUF | 22 |
| S.T.O. | 23 |
| A.S.D. | 24 |
| ABFO | 25 |
| MFO | 25 |

| | |
|-------------------|-------|
| Beachmaster | 27-28 |
| 1 Aust Fd. Sqn | 29 |
| 53 Port Craft Coy | 30 |
| War Diary | 31-22 |
| File | 33-34 |

Copies for information :-

| | |
|--------------------------|-------|
| HQ Mov. Cont. LAE | 35-36 |
| 1st Aust Army (Mov & Tn) | 37-38 |
| Spares | 39-40 |

APPENDIX "A" to Movement Control Order No. 615

| Serial | Unit | Offrs | ORs | Total | Vehs. | Pages | Cargo | Tons (M). |
|--------|--------------------|-------|-----|-------|---|-------|---------------------|-----------|
| 1. | HQ 6 Aust Div | 2 | 17 | 19 | | 200 | Tents | 30 |
| 2. | 2/7 Aust Fd. Amb. | 10 | 197 | 207 | | 873 | Equipt. | 104 |
| 3. | 2/2 " " Coy | 8 | 105 | 193 | | 75 | " | 3½ |
| 4. | 2/7 " Inf Bn | 14 | 236 | 250 | | | | |
| 5. | 2/1 " Guard Regt | 1 | 34 | 35 | | | | |
| 6. | 2/42 " LAD | 1 | 13 | 14 | | 53 | " | 11½ |
| 7. | 6 Aust Div Provost | | 5 | 5 | | | | |
| 8. | 53 Fort Craft Coy | 1 | 12 | 13 | | 57 | " | 8 |
| 9. | 2/3 Aust Fd. Regt | 10 | 99 | 109 | 1x15cwt 4x4 1x3ton Water 3 Tractors (Cased) | 15 | " | 53½ |
| 10. | 1 Aust Fd. Sqn | | 2 | 2 | | | | 35 |
| 11. | RAN | 1 | | 1 | | | | |
| 12. | 2/6 Aust Inf Bn | | | | 4 Guns 2 pdr | 986 | Amn. Fuel & Eqpt | 170½ |
| 13. | 2/5 " " " | | | | | 1094 | " " " | 85½ |
| 14. | 2/2 Aust Tpt Pl. | | | | 15 Trucks 2½ton | | | 338 |
| 15. | M.F.C. | | | | | 3 | Pers Effects | ¾ |
| 16. | 17 Aust. Inf. Pde. | | | | 30 Jeeps 28 Trailers | | | 292 |
| 17. | A.S.D. | | | | | 1012 | Rations | 38½ |
| 18. | A.B.F.O. | | | | | 434 | Mail | 43½ |
| 19. | R.A.A.F. | | | | | 82 | Eqpt | 8½ |
| 20. | US QM | | | | | 371 | C/s Butter | 9 |
| | | | | | | 1475 | " Beef | 39 |
| Total | | 48 | 800 | 848 | 79 Vehs Mobile | | | 1270½ |

11 Aust Fd. Sqn

11 Aust Fd. Sqn

11 Aust Fd. Sqn

-7. FEB. 1945

WAR DIARY or INTELLIGENCE SUMMARY/ PAGE 1.

Army Form C.2118
(adapted)

(Brace heading not required.)

Unit 1 AUST FD SCH RAE (AIF)

Date and Time.—From 0001r 1 Dec 44 To 2359r 31 Dec 44.

| Place | Date | Hour | Summary of Events and Information | Remarks and references to Appendices, Diaries, &c. |
|---------|-------|------|---|--|
| AITAPE. | Dec 1 | | | <u>APPENDICES:</u> Works Reports. |
| | 2 | | | Report on bridging swamp at ANGAU NO 2 Compound. |
| | 3 | | Rest day for all troops. | Report on ALCH Landing ramp. Priorities of mech equipt. <i>rd</i> |
| | 4. | | | |
| | 5 | | | |
| | 6 | | 6 Fd Troop blew a dangerous overhanging rock on cliff face near bend in road at American Shovel. Lecture to officers on malaria. <i>rd</i> | |
| | 7 | | | |
| | 8 | | | |
| | 9 | | | |
| | 10 | | Rest day - for unit except 5 Fd Troop working on Railway. <i>rd</i> | |
| | 11 | | | |
| | 12 | | Heavy rains early morning. Areas badly flooded including 5 Fd Tp Tech Store and Orderly Room <i>rd</i> | |
| | 13 | | Lecture to officers on scrub typhus. <i>rd</i> | |

WAR DIARY or INTELLIGENCE/SUMMARY/

PAGE 2.

Army Form C.3118

(adapted)

(Erase heading not required.)

Unit 1 AUST FD SQN RAE (AIF)

Date and Time. From 0001 1 Dec 44

To 2359I 31 Dec 44.

| Place | Date | Hour | Summary of Events and Information | Remarks and references to Appendices, Diaries, &c. |
|-------|--------|------|---|--|
| ATAPE | Dec 14 | | Capt NEVILLE and Sjt THOMSON inspected unit vehicles working for 2/8 Aust Fd Coy below Drinimour River. Submitted report to OC. <i>for</i> OC visited DCRE and verbally requested a work schedule especially in respect to stores. DCRE agreed in future all work s will fit in on the programme and we will work accordingly. Pay day - £400 paid out. | |
| | 15 | | Installation of interhal phones to C store and Tpt office. <i>an</i> Lts MULVEY, GILFILLAN and COULTHART interview DAQMG 1800 hrs for service in British Army in India. Commenced gravel carting 120 loads. | |
| | 16 | | | |
| | 17. | | Rest day - 3 vehs and drivers det to 2/8 Aust Fd Coy for duty to relieve vehicles and drivers already there. <i>an</i> | |
| | 18. | | | |
| | 19. | | 5 Fd Troop return from detachment. <i>an</i> | |
| | 20. | | | |
| | 21. | | OC talked to unit and explained to troops the war situation and our unit work. <i>an</i> | |
| | 22. | | | |

WAR DIARY or INTELLIGENCE SUMMARY

(Erase heading not required.)

Army Form C.2118
(adapted.)

Unit 1 AUST FD SQN RAE (AIF)

Date and Time. From 0001I 1 Dec 44 To 2359I 31 Dec 44.

| Place | Date | Hour | Summary of Events and Information | Remarks and references to Appendices, Diaries, &c. |
|---------|--------|------|--|--|
| AITAPE. | Dec 23 | | | |
| | 24 | | Rest day for all troops. Spr COLES accidentally drowned. <i>DR</i> | |
| | 25 | | XMAS DAY: Funeral of Spr COLES - issue of ACF Comforts Fund Hampers. Xmas Dinner. | |
| | 26 | | BOXING DAY: Normal work. <i>DR</i> | |
| | 27 | | | |
| | 28 | | Pay day! <i>DR</i> | |
| | 29 | | | |
| | 30 | | | |
| | 31 | | SUNDAY: swimming sports in morning. Rest day. Native 'sing-sing'. <i>DR</i> | |
| | | | <i>[Signature]</i> OO 1 Aust Fd Sqn RAE | |
| | | | | |
| | | | | |
| | | | | |
| | | | | |

W. H. Hargy

WEEKLY WORKS PROGRESS REPORT

As At 2000 hrs Thurs 16/1/44

Submitted By :

1 AUST FD SQN RAE (AIF)

| Job No. | SERVICE | Date Issued | Date Commenced | Progress % | E.T.C. | Man Hours | Stores Req. S.I.B. No. | Remarks |
|---------|--|-------------|----------------|-----------------------------------|--------|---|------------------------|--|
| 1/2 | Electrical Wiring B.S.A. | 4/11 | 6/11 | 48% | | | | Temporary Wiring Complete. No further electrical equipment available |
| 10/ | Job Laundry (a) Graveling Site (b) Water Supply (c) Drainage (d) 2-40'x18' huts Total | | | 100% 75% 100% 90% 70% | | 200 | | water is supplied and plant can operate |
| 15/1 | 6000 cu ft cool room | 4/11 | 6/11 | 20% | | 1656 | 1,2,5,41,43 | Revised plans not received and stores lists being completed |
| 15/3 | L.S.D. (a) Woolstore 300' x 50' (b) 60' x 18' Scale B Huts Prefabrication (c) Woolstores 100'x45'-12 cutting & Erecting | | | 1% 45% 33% | | 2000ae 442 Oths 2085 Nats 419 RAE 46 Oths 410 Oths 1732 RAE 110 Nats | 23,25,50,41,43 | |
| 15/8 | Bakery 100' x 45' (a) Framework M&H B (b) Partitions - Fittings (c) Concreting Floor | | | 100% 95% 100% | 31 Jan | 110 100 340RAE 2400ths 410 Nats 410 | | 1000 gal Tank Req'd |
| 22/2 | Small railway road to Para Coy | 4/12 | | 4% | | 410 | 68/44 | Work Suspended |
| 23/1 | (a) Clearing (b) Forming by Tractor (c) Drains (d) Laying Beams | | | 100% 100% 100% 100% | | | | |

Submitted By : 1 Aust Fd Sqn RAE (AIF)

| Job No. | SERVICE | Date Issued | Date Commenced | Progress % | E.T.C. | Man Hours | Stores Req S.I.B. No. | Remarks |
|---------|----------------------------------|-------------|----------------|------------|--------|-----------|-----------------------|--|
| 23/1 | Road to Farm Coy (cont'd) | | | | | | | |
| | (f) Laying Surface | | | 100% | | | | |
| | (g) Covering with Earth | | | 70% | | | | |
| | (g) Culvert A | | | 100% | | 1750 | | More gravel to be put on and road to be graded |
| | (h) Culvert B | | | 100% | | | | |
| | Total | | | 90% | | | | |
| 25/1 | 2/11 A.G.H. | | | | | | | |
| | (a) Kitchen fittings | | 13/11 | 88% | | 1275 | | |
| | Latrines) | | | | | | | |
| | (b) Wards - Ablutions) | | | 90% | | 920 | | |
| | Annexes | | | 20% | | 400 | RAE 17,18,19,25,36 | 2 complete 31 Dec. |
| | | | | | | 300 | Wks. 39,50,56,40,42 | 4 " 14 Jan. |
| | | | | | | | 55,58,62,65,76 | |
| | | | | | | | 78,81,88. | |
| | (c) Sage palm Screen | | | 25% | | 300 | Wks. | |
| | | | | | | 510 | Wats. | |
| | (d) Ironing Annex | | | 100% | 31 Dec | 250 | RAE | |
| | (e) AANS Lines | | | 10% | | 360 | | |
| | (f) Water Reticulation | | | 85% | | | | |
| | (g) Elect. " | | | 25% | | 47 | RAE | |
| | (h) Refrigeration | | | 80% | | 95 | RAE | |
| | (i) Drainage General) | | | 33% | | 320 | Wks. | |
| | Culverts) | | | | | 115 | RAE | |
| | (j) Operating Theatre | | | 10% | | 230 | Wks | |
| | | | | | | 284 | RAE | |
| | | | | | | 700 | Wks | |
| | Gravel Winning From Chinaman | | | 960 yds | | | | |
| | River Gravel Winning | | | 140 " | | | | |
| | Construction of Barricade Loader | | | 100% | | 55 | RAE | Est Output - 7 yds/man day |

O.C. 1 Aust Field Squadron R.A.E.

Submitted By :

1 Aust Fd Sqn ~~RAF~~ (AIF)

WEEKLY WORKS PROGRESS REPORT

As at 0000 hrs Thurs. 14./..Dec... 44

| Job No. | SERVICE | Date Issued | Date Commenced | Progress % | E.T.C. | Man Hours | Stores Req S.18 No. | Remarks |
|---------|---------------------------------|-------------|----------------|------------|---------------------------------|---------------------------------|---------------------|---|
| 1/2 | Electrical wiring Base Sub Area | 4/11 | 5/11 | 48% | | | | Temporary wiring complete. No further electrical equipment available |
| 7/5 | Gravel Chinaman | 4/12 | 4/12 | 100% | complete | 467 | 66/44,84/44 | |
| 10/ | Mob Laundry | | | | | | | |
| | (a) Graveling Site | | | 65% | | | | |
| | (b) Water supply | | | 75% | | | | Water is supplied and plant can operate |
| | (c) Drainage | | | 100% | | | | Temporary only pending cement supplies |
| | (d) Two 59 x 18 Huts | | | 10% | | | | |
| | Total | | | 60% | | | | E.T.C. dependent on availability of timber & tanks for storage 10,000 gall. |
| 15/1 | 5000 cu.ft Cool Room | 4/11 | 6/11 | 20% | | 656 | 1,2,5,41,43 | Job has to be recommenced on arrival of plant and revised plans. |
| 15/3 | Wool Type Store 300"x50" A.S.D. | 4/11 | 16/11 | 10% | | 210RAE 252 0ths 2085 Nats | | Timber 4 x 1½ in short supply |
| | Prefabrication of Huts | | | | | | | |
| | 16 Scale B 60" x 18" | | | | | | | |
| | 12 wool stores 100"x30" | | | | | | | |
| | 1 " " 300"x50" | | | | | | | |
| | (a) Measuring & Cutting | | | 38% | As per our schedule of 9 Dec 44 | 369 | 23,25,41,43 | |
| | (b) Erection | | | | | | | |
| | i) Wool stores 100 x 45 | | | 5% | | 238 | | |
| | ii) " " 300"x50" Transit S ed | | | 10% | | 252 RAE 2085 0ths | | Timber 6 x 4 & 9 x 2 & 3" nails required. |
| | iii) Scale B 60 x 18 | | | 30% | | 760 | | |
| 15/8 | Bakery Hut 100 x 45 | | | 80% | 16 Dec | 217 | 23,25,50,41,43 | Less floor-pending cement |

Sheet 2 WEEKLY WORKS PROGRESS REPORT

AS AT 2000 hrs Thur/...../...

14 Dec 44

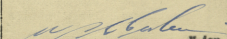
Submitted By :

| Job No | SERVICE | Date Issued | Date Commenced | Progress % | E.T.C. | Man Hours | Stores Req S.18 No. | Remarks |
|--------|--|-------------|----------------|------------|----------|-----------|---------------------|---|
| 22/2 | Saw mill Railway | | 4/12 | 4% | 10/1/44 | 430 | 68/44 | Job deferred pending availability of labour. Request 100 men for a fortnight |
| | Road work : clearing overhang at corner Map ref 919829 | | 5/12 | 100% | complete | 100 | | Ref map Aitape EAST 1"-1M Explosives required to replace V.E. explosives used. |
| 23/1 | Road connecting Air Strip HADL with Para Coy | | | | | | | |
| | (a) Clearing | | 4/12 | 60% | | | | |
| | b) Forming by tractors | | | 60% | | | | |
| | c) Drains | | | | | | | |
| | d) Laying bearers | | | 90% | | | | |
| | e) Laying surface | | | 15% | | | | |
| | f) Covering Mat | | | | | | | |
| | g) Culvert A | | | 20% | | | | Culvert A was 60% complete but was destroyed when debugging an Arty Regt's tractor. |
| | h) Culvert B | | | | | | | |
| | Total | | | 25% | 25/12/44 | 810 | | |
| 25/1 | 2/11 A.G.H. | | | | | | | |
| | (a) Kitchen - Structure | | 13/11 | 100% | | 3018 | | |
| | Partitions | | | 100% | | 590 | | |
| | Pittings | | | 60% | | 500 | | |
| | (b) Ward - Latrines | | | 95% | 15/12/44 | 425 RAE | | EDC dependent on availability of stores incl cement nails & pipe fittings |
| | | | | | | 230 Oth | | Holes for flues to be cut. |
| | | | | | | 820 | | Complete pending cement supplies |
| | (c) AANS - Ablutions | | | 85% | 16/12/44 | 655 | | |
| | Ablutions | | | 100% | | | | |
| | Latrines | | | 93% | 15/12/44 | | | Drainage from latrines to be completed |
| | (d) Sago Palm Screen | | | | | | | |
| | AANS Lines | | 13/12 | 5% | 15/12/44 | 180 Mats | | |

WEEKLY WORKS PROGRESS REPORT

AS AT 2000 hrs Thur . 14/Dec..44

Submitted By : 1 Aust Fd Squ RAE (AIF)

| Job No. | SERVICE | Date Issued | Date Commenced | Progress %age | E.T.C. | Man Hours | Stores Req. S.18 No. | Remarks |
|---------|-------------------------------------|-------------|---------------------|---------------|----------|-----------------------------------|----------------------|--|
| 25/1 | <u>2/11 A.G.H. Cont'd</u> | | | | | | | |
| | (e) Ironing Annex | | 13/12/44 | 5% | 19/12/44 | 30 RAE | | Temporary stand erected at ablutions to ensure supply. |
| | (f) Tank Stand | | | 100% | do | 686 RAE 30 Oths | | |
| | (f) Water reticulation (phase A) | | 23/12/44 | 80% | | 300 RAE 270 Mats | 15/12/44 | |
| | (h) Electric Light supply (phase A) | | | 20% | 28/12/44 | 40 RAE 120 Oths | | Temporary wiring pending arrival of fittings |
| | (i) Refrigeration | | | 60% | | 35 RAE 140 Oths | | |
| | (j) Drainage - General Culverts | | | 20% | | 40 RAE | | |
| | | | | 50% | | 350 Oths | | |
| | Total Phase 1 | | | 95% | 28/12/44 | 7417 RAE 1250 Oths 750 Mats | | |
| | Gravel winning from chinaman | | 13 Dec | | | 9417 | | 150 Cu. yds dumped |
| | | | | | | | | Major <u>O.C. 1 Aust Field Squadron RAE (AIF)</u> |

War Diary

WEEKLY WORKS PROGRESS REPORT

As At 2000 hrs on ²¹ 12/.../44

Submitted By : 1 AUST FD SCH RAE (AIF)

| Job No. | SERVICE | Date Issued | Date Commenced | Progress % | E.T.C. | Man Hours | Stores Req. S.I.B. No. | Remarks |
|---------|--|-------------|----------------|------------|--------|------------|------------------------|---|
| 1/2 | Electrical wiring BSA | 4/11 | 5/11 | 88% | | | | Temporary wiring complete. No further electrical equipment available. |
| 1/ | M b Laundry | | | | | | | |
| | (a) Graveling site | | | 100% | | | | |
| | (b) Water supply | | | 75% | | | | Water is supplied and plant can operate |
| | (c) Drainage | | | 100% | | | | Temporary only pending cement supplies. |
| | (d) Two 50' x 18' huts | | | 10% | | | | ETC dependant on availability of timber |
| | TOTAL: | | | 60% | | | | and tanks for storage 10,000 gals. |
| 1/1 | 5000 cu ft Cool room | 4/11 | 5/11 | 20% | | 656 | 1,2,5,41,43 | Revised plans now rec'd and stores lists being completed. |
| 1/3 | A.S.D. | | | | | | | |
| | (a) Woolstore 300' x 50' | | | 11% | 31 Jan | 210 RAE | | Temporarily suspended awaiting labour. |
| | | | | | | 208 Nat | | |
| | | | | | | 402 Others | | |
| | (b) 60' x 18' Sola e B Huts Prefabrication. | | | 40% | | 410 | | Including setting up benches temporarily |
| | (c) Woolstores 100' x 45' 12. No cutting and erecting. | | | 16% | 31 Jan | 1100 | | hold up for 4" x 1 1/2" x 14'. |
| 1/8 | (a) Bakery 100' x 45' | | | | | | | |
| | (A) Framework M&H B | | | 90% | | 36 RAE | | |
| | (B) Partitions- fittings | | | 25% | 27 Dec | 100 RAE | 2,25,50,41,43 | |
| | (c) Concreting floor | | | 10% | | 129 RAE | | |
| | | | | | | 40 Others | | |
| | | | | | | 210 Nat | | |
| 21/2 | Sawmill railway | 4/12 | | 4% | - | 430 | 66/44 | Work suspended |

Submitted By : 1 AUST PD SQN RAE (AIP)

WEEKLY WORKS PROGRESS REPORT

As at 2000 hrs Thurs 21 . 12 . / 44 .

| Job No. | SERVICE | Date Issued | Date Commenced | Progress % | E.T.C. | Man Hours | Stores Req. S.I.B. No. | Remarks |
|---------|---|-------------|---|--|---|--|------------------------|--|
| 13/1 | Road to Farm Coy - (a) Clearing (b) Forming by tractors (c) Drains (d) Laying bearers (e) Laying surface (f) Covering with earth (g) Culvert A (h) Culvert B Total job | | | 100% 90% 5% 100% 100% 5% 100% 100% 100% | 26 Dec | 1610 RAE | | Gravel will be diverted from 2/11 A.G.H. on 22 Dec. |
| 15/1 | 2/11 A.G.H. - (a) Kitchen - Structure & Partitions Fittings (b) Wards - Ablutions Latrines Annexes (c) A.A.H.S. - Ablutions Latrines (d) Sage palm screen (e) Ironing Annex (f) AAMS lines (g) Tankstand (h) Water reticulation (i) Electric light supply (j) Refrigeration | | 13/11 13/12 13/12 | 100% 80% 90% 10% 100% 100% 20% 95% 5% 100% 85% 30% 70% | 28 Dec 31 Dec 31 Dec 31 Dec - ? ? 20 Jan | 1608 1000 80 RAE 150 Others 655 RAE 17,8,9,25,36,39,50 252 RAE 36,40,42,55,58,62 140 Others 65,76,78,81,88 150 Others 160 Nat 200 RAE 180 Nat 686 RAE 30 Others 340 RAE 270 Nat 40 RAE 120 Others 170 RAE 220 Others | | Dependant on 6" x 1" flooring. Minor repairs will be required on tanks Depends on supplies of 4" pipe & all fittings Depends on completion of all buildings |

WEEKLY WORKS PROGRESS REPORT

As at 2000 hrs Thur./.../..

Submitted By : 1 AUST FD SQN RAE (AIF)

| Job No. | SERVICE | Date Issued | Date Commenced | Progress % | E.T.C. | Man Hours | Stores Req S.I.B. No. | Remarks |
|---|---------------------------|-------------|----------------|------------|--------|------------|--------------------------|-------------------------------|
| 5/1 | <u>2/11 I.G.H. (Cont)</u> | | | | | | | |
| | (k) Drainage - General | | | 30% | 20 Jan | 115 RAE | | |
| | Culverts | | | 100% | | 250 Others | | Ray & dark room - ETC 31 Dec. |
| | (i) Operating theatre | | | 3% | 14 Jan | 84 RAE | | |
| | Gravel winning | | | | | 400 Others | | 1670 c. yds. |
| <p align="right">.....Major C.C. 1 Aust Fd Squadron RAE(AIF).</p> | | | | | | | | |

1 Aust Fd Sqn RAE (AIF)

No.

Date 1 JAN 1945

54. AUST. D.C.R.E. (Works)
30 December 44

1 AUST. FIELD. SQN.

PRIORITIES OF MECH EQUIP.

1. The following schedule sets out present Earth Works programme.

| Priority | Job No. | Location | Remarks |
|----------|---------|---------------------------------|-------------|
| 1. | 30-4 | Whittaker Bridge | |
| 1a. | 15-10 | S & T. Gravelling Floors | As required |
| 1b. | 25-3 | 2/11 A.G.H. Roads & Floors | " |
| - | - | Road Maintenance Area General | |
| 2. | 20-5 | R.S.D. Gravelling Floor. | |
| 3. | 1-2 | Base H.Q. Vehicle Park. | |
| 4. | 21-1 | B.I.P.O.D. | |
| 5 | 15-11 | S & T Roads | |
| 5a. | 5-4 | Water Point Roads & Drains. | |
| 6 | 7-6 | Base Area Road. | |
| 7 | 14-1 | 126 A.G.T. Levelling. | |
| 8 | - | Road & Bridge near Airstrip. | |
| 9 | - | 19 A.O.D. | |
| 10 | - | Canteens Roads & Hardstandings. | |
| 11. | - | Forestry Road. | |

The above allocation is subject to alteration through urgent and unforeseen works.

Referenced
Major.
54. AUST. D.C.R.E. (Works)

1 Aust Fd Sqn RAE (AIF)

No.

Date - 1 JAN 1949

54 Aust. D.C.B.E. (Works)
30 December 44

1 Aust Field Sqn.
Copy - 2/21 A.C.H.

HOSPITAL BUILDINGS

1. The following schedule sets out order of priorities for Hospital buildings

| | Estimated Time of Completion. |
|--|----------------------------------|
| 1. Operating Theatre. | 21.1.45 |
| 2. Ward Annexes Nos 5 & 6 | 31.1.45. |
| 3. " Ablutions & Latrines 5 & 6. | 31.1.45. |
| 4. Specialists Block Flooring | 7.1.45. |
| 5. " " Internal(Plan to be supplied) | |
| 6. Mortuary | |
| 7. Hospital Laundry. | |
| 8. Annexes Dysentery & Acute Surgical | |
| 9. " Ablutions & Latrines | |
| 10. Sisters Rec. Hut. | |
| 11. Annexes 2 No. | |
| 12. " Ablutions & Latrines | |
| 13. Covered way from Theatre | |
| 14. Skin Annex | |
| 15. Physiotherapy | |
| 16. Dispensary & Path. | |
| 17. Mental Ward. | |
| 18. Linen Store. | |
| 19. Fascies Destructor | |
| 20. Incinerator | |

Please supply the Estimated Dates of completion of the above list.

Refugee for Major
54 Aust. D.C.B.E. (Works)

9/1/45

CONFIDENTIAL.

Page 1 of 1.

TO: 54 ABST DORE (WORKS).

REPORT ON BRIDGING SWAMP AT ANGAU NO 2 COMPOUND MAP REF 977495

1. Ref Map AITAPE EAST 1" to 1 mile.
2. Report by Maj W P C CURLEWIS, OC, 1 Aust. Fd. Sqn. R.A.E.
3. Date: 18 Dec 44.
4. Object to construct semi-permanent class 9 bridge over swamp.
5. Details of Gapt:

Width: 206 ft.
 Max Depth: 7'6" Average: 5ft.
 Bed: Firm sand with patches of mud.
 Flow of water: NIL.

6. Summary of Plans:

Number of spans: 14.
 Length of span: 15 ft.
 Width of roadway: 10ft 6 ins.
 Piers and abutments: 9" round timber piles.
 Road bearers: 4 No 14" round timber.
 Decking: 10" round timber split.
 Ribands: 8" coconut logs.
 Running planks: 4" x 1 1/2" seen timber.

7. Time labour and equipment:

Time: 10 days.
 Labour: One Fd Troop RAE (40 men approx).
 Equipment:
 1 D4 Dozer D to D plus 1
 on nearside approach.
 1 D4 Dozer D plus 1 to D plus 9.
 logging in forest.
 Tp equipment and transport (less 3 No 3 ton tippers).

APPENDIX

- A. Sketch plan of bridge and typical pier.

W. P. C. Curlew Major
 OC 1 AUST FD SQN RAE (AIF)

NPCC:HN

REPORT ON TIMBER BRIDGE

Ttr 54 AUST DORE (WORKS)

Ref Map: AITAPE 1 inch to 1 mile.

Map Ref: 007495

Report by: Maj W P C GUNTERIS, OC 1 AUST FD SGN RAE (AIF)

1. OBJECT: To construct class 9 crossing.
2. FACTORS: Topography: Site selected was a swamp, 208' wide, average depth 5'. Bottom firm and with small patches of mud 20' wide. No satisfactory alternative site on either side due to:-
 - (a) Additional work involved in clearing bridge approaches and
 - (b) Bottom deteriorated into mud up to 12' deep.
 Swamp was non tidal and non flooding.
3. RESOURCES:
 - (a) Local: An existing bridge which had sunk afforded foot crossing.
 Bush timber was available 4 miles away, coconuts logs only in vicinity, of site.
 - (b) Engineers: A fd troop was available for construction. One D4 dozer and 4" *Sawn Timber* x 18" were available. No stock spans or other standard bridging materials available.
4. At the time the Sgn was deficient 4 offrs, but it was decided to place an officer on the job.
5. Sgn was camped 8½ miles away, therefore, it was decided to bivouac one fd troop at site.

METHOD ADOPTED:

6. Briefly to build a class 9 bridge. Grib piers, timber roadbearers, decking and ribands of bush timber with sawn timber running planks.

TIME AND LABOUR:

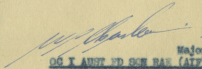
| Ser No. | Task | No of men in party | Man hrs | Remarks |
|---------|-------------------------------|--------------------|---------|------------------------------|
| 1. | Recco | 1 offr 2 ORs | 24 | First day only. |
| 2. | Bivouac preparation | 14 | 98 | First day only. |
| 3. | Site clearing and setting out | 4 | 40 | First day only. |
| 4. | Timber winning. | 16 | 1800 | |
| 5. | Approaches. | 3 | 60 | |
| 6. | Piers | 10 | 700 | Preparation and positioning. |
| 7. | Girders. | 6 | 500 | do do |
| 8. | Decking. | 3 | 200 | do do. |
| 9. | Ribands. | 6 | 100 | do do. |

Equals 40 men 10 days

TRANSPORT:

| Type | No | Use |
|---------------------|----|---|
| Jeeps | 2 | Water carrying and administration. |
| 3 ton 4 x 4 tippers | 3 | Timber carrying. |
| 3 ton 4 x 4 winches | 2 | One for snagging and logging. One on site for winching out girders, etc. |

7. No difficulty was experienced in construction, nothing novel in design was attempted. The method adopted for the construction of piers was to commence building the pier in shallow water and boom out as each successive layer was placed until required height reached then the pier boomed into position.
8. Difficulty of timber getting was accentuated by:
- (a) heavy rain.
 - (b) traffic on track from other units.
 - (b) could have been alleviated by unit traffic control.
9. Traffic was put on bridge before running planks were completed. The vibration set up caused one corner of No 12 pier to sink through a false bottom (a light layer of firm sand beneath the mud which was not disclosed on reeco. This pier was lifted by sheer legs and differential block and tackle and an additional crib placed underneath.
10. LESSONS.
- (a) It is worth the loss of one working sapper to control traffic on congested bad road (e.g. in the forest). Authority should be obtained from Formation to do this when planning.
 - (b) In reeco, ensure there can be no doubt, particularly in a swamp, that the estimated bottom is the final one and not a false one as occurred in this case. A serious break down could have occurred from this fault. The first layer of sand was approx 12" thick.


 Major
D.C. I. AUST ED SEN BAE (AIF)

SECRET

REPORT ON ALCH LANDING RAMP - AITAPE

- NOTE: Project was abandoned due to freezing ARC mesh supplies.

(a) Approach spans: Overall length 571' 6" - 5 x 111' 6" spans. Width 10'.
Piers: ARC mesh cylinders.
Road bearers: 10" x 5" R3Jn.
Deckings: 9" x 3" sawn timber.

- (b) Ramp: Overall length: 42'
Width: 20'
Fender piles: 10" coconut logs.
Ramp: ABC mesh boxes 10' x 6' x 6'7" with 6 No ABC
mesh cylinders, 3'2" diameter, inside.

(a) Times 10 days.

- (b) Labour 1 fd troop RAE plus 30 natives.
Tp equipment only.

Piles gotten with IR Compressor

A. Working drawing.

Major
OC 1 AUST ED SCH BAR (AIF)

1 AUSTRALIAN SQN RAE (AIF)
AUSTRALIA.

26 Dec 44.

TO: 54 AUSTRALIAN CORPS (WORKS)

REPORT ON LCM LANDING RAMP

1. Ref Map: AITAPE EAST 1 inch to 1 mile.
2. Report by: Maj W P C CUREN, OC 1 Aust Fd Sqn RAE (A.I.F.)
3. Date: 22 Dec 44.
4. Object: To construct LCM Landing Ramp.

FACTORS:

5. Time: Time was the essential factor. The unit resources could not be made available for more than one week, therefore plan had to be simple and designed with materials immediately available.
6. Specifications: An LCM is up to 60' long, 14' wide and draws 4'. Because of the bottom, it cannot land on anything rigid and because of the door construction, door when down, must lie level or sloping away from the craft.
7. Topography: Little cover from weather is afforded but the farther west in Aitape Bay, the better the protection. However, it gets shallower the farther west. Therefore a mean had to be struck. Low tide on day it could first be commenced was at 0515 hrs, first light approx 0500 hrs. Therefore, best time to commence work was at 0500 hrs. A very heavy surf was running which intensified towards later afternoon making work in the water impossible. The beach was sloping at a uniform grade of 1/20 for the first 80 ft, then fell away more rapidly with no sand bar beyond.

PLAN:

8. The plan commenced as:-
 - (a) Approach span: built out 60ft on ARC mesh cylinders as piers, with superstructure of RSJ 10" x 5" and sawn timber decking. Piers to be filled with sandbags. Roadway, 10ft wide.
 - (b) Ramp: to make and position a series of ARC mesh boxes, 10' x 6' x 6' - frame only, fill with sand bags and deck with coconut logs running longitudinally. Gradually diminish height of boxes as they went out to maintain a grade of 1/6. Length of ramp to be 42 ft which gave 4 ft depth at LWM at end, and width 20ft. To take up thrust of LCM grounding, 5 piles were to be driven at inshore end of ramp. (These piles formed the last pier for approach span as well). Fender piles to be driven 20ft out shore of the end of the ramp and level with the edges to prevent breaching and act as guide posts. This design made for ease of construction, fulfilled requirements of depth, and under stern slope for door.
9. One Fd Troop was given the task plus 30 natives. The former working on two shift basis.
10. Task allotment as follows:

| Ser. No. | Description | Average No of men per shift | Man Hrs | Remarks |
|----------|-----------------------|-----------------------------|---------|----------------------------------|
| 1. | Piers | 12 | 180 | Positioning took bulk of time. |
| 2. | Filling with sandbags | 6 | 170 | Including emptying (see para 11) |
| 3. | Superstructure | 6 | 280 | All jobs were not concurrent. |

REPORT ON LCM LANDING RAMP

| Ser. No. | Description | Average No of men per shift | Man Hrs | Remarks |
|----------|--------------------------------------|-----------------------------|-----------------|-------------------------------------|
| 4. | Piles, winning, shaping and driving. | 12 | 590 | |
| 5. | Whaling and bracing | 3 | 80 | |
| 6. | ARC boxes, building and positioning. | 18 | 400 | Tpt: 2 jeeps 1 winch 1 tipper |
| 7. | Filling with sandbags | 30 | 2800 | Tp Equipt incl compressor |
| | TOTAL | 60 men | 4500 10 days | |

11. LESSONS:

- (a) As work proceeded it was evident sand filling of bags was ~~useless~~. An effort to line piers and boxes with malthoid equally impossible due to surf. Therefore, coral was carted and filled into bags. As filling of piers proceeded it became evident that they lost their stability - offering more resistance to the passage of water and commenced to overturn, also the tendency to sink was increased. Therefore, they were emptied and an extra cylinder 3 per pier was inserted.
- (b) The effect of surf on ARC boxes was to distort them first into spherical shape sheering wires, etc, and finally crumble entire box. This was accentuated when *partially* practically filled with sand bags which could not be packed as surf washed them to and fro. This design was abandoned and instead ARC boxes as before, 10' x 6', were filled with 6 No 3ft 2 in dia cylinders and all inter-connected with joints, each of 6 ~~turns~~ of 12g wire. Cylinders had to be pressed into elliptical ^{shape} to make good contacts with ends. This method appeared successful of withstanding the surf, but project was abandoned due to ARC mesh shortage.
- (c) The driving of piles presented two difficulties, one, no driver ^(Jetties) available, and two, floating out into position. The first difficulty was overcome by ~~floating~~ ^{filling} with air assisted by improvised light driver and swinging pile backwards and forwards by guys. Approx 7ft 6 ins penetration was obtained - air filling, however, is not satisfactory. The latter (a practical difficulty), it was found that the quickest and safest method was to manhandle out - great care necessary to maintain pile at right angles to oncoming surf. This method can only be carried out by men who are determined and confident in the surf. The other method attempted was after the pile was driving to attach a snatch block and winch out - however, pile is uncontrolled and swings violently and surges forward with the back wash - damaging any structure within range.
- (d) Some natives were very useful in the surf, though the bulk were afraid of it.

12. GENERAL: Usual constructional methods were used on the approach span. Job was done because of time factor by three simultaneous portions:

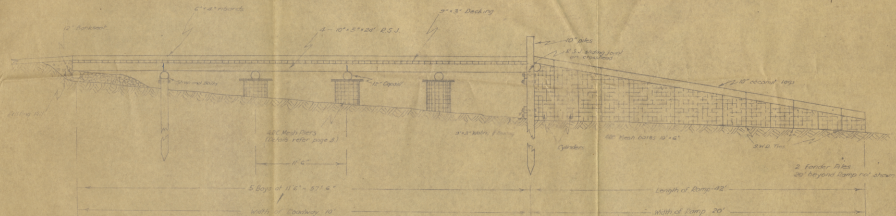
- (a) approach span,
- (b) piling,
- (c) ramp.

It would have been considerably easier and more economical to use fewer men and build out.

[Signature]
Major
OC 1 AUST FD SEN RAE (AIF)

LCM LANDING RAMP

Appendix "A"



GENERAL LAYOUT OF LANDING STAGE

Scale 1" = 5'



PLAN OF BAYS

Scale 1" = 5' 6"

WEEKLY WORKS PROGRESS REPORT

Submitted by : 1 Aust Fd Sqn RAE (AIF)

as at 2000 hrs 11 Jan 44

| Job No. | Description | Date Issued | Date Commenced | %age Completed | Estimated Date of Completion | Man Hours | Stores Req. S.18 Nos | Remarks |
|---------|--|-------------|----------------|----------------|------------------------------|------------------------------------|----------------------|--|
| 1/2 | Electrical Wiring BSA | 4/11 | 6/11 | 48% | | | | Temporary wiring complete. No further electrical equipment available |
| 10/ | Mob Laundry | | | | | | | |
| | (a) Graveling Site | | | 100% | | | | |
| | (b) Water Supply | | | 75% | | | | 5,000 Gal Tank not available |
| | (c) Drainage | | | 100% | | | | |
| | (d) 2 - 40'x18' huts | | | 100% | | | | |
| 15/1 | 5000 Cu ft Cool room | 4/11 | 6/11 | 20% | | 656 | 1,2,5,41,43 | revised plans now received and stores lists being completed |
| 15/3 | A.S.D. | | | | | | | |
| | (a) Work store 300'x50' | | | 19% | | 1365 RAE 1023 Oths 3485 Nats | | |
| | (b) 60'x18' Scale B Huts Prefabrication | | | 46% | | 509 RAE 56 Oths | | |
| | (c) Woolstore 100'x45' 12 No. cutting & Erecting | | | 38% | | 2137 RAE | | |
| 15/8 | Bakery | | | | | | | |
| | (a) Framework Mk II B | | | 100% | | 410 RAE | | |
| | (b) Partitions & Fittings | | | 99% | | 390 " | | |
| | (c) Concreting Floor | | | 100% | | 140 RAE, 200 Oths, 420 Nats | | |
| | (d) Tank Stand | | | 100% | | 112 RAE | | |
| | (e) Drainage | | | 100% | | 60 RAE | | |
| 23/1 | Road to Farm Coy | | | | | | | |
| | (a) Clearing | | | 100% | | | | |
| | (b) Forming By Tractor | | | 100% | | 1780 RAE | | |
| | (c) Drains | | | 100% | | | | |
| | (d) Laying Bearers | | | 100% | | | | |
| | (e) Covering with earth | | | 75% | | | | |
| | (f) Laying surface | | | 100% | | | | |
| | (g) Culverts A & B | | | 100% | | | | |
| | Total | | | 100% | | | | |

11 Jan 44

1 Aust Fd Sqn RAE (AIF)

| Job No. | Service | Date Issued | Date Commenced | Progress %age | Estimated Date of Completion | Man Hours | Stores Req. S.18 Nos | Remarks |
|---------|---|-------------|----------------|---------------|------------------------------|-----------------------------|---------------------------------|---------------------------|
| | A.L.C.M. Salvaging | | | 1 0% | | 18 RAE 7 Oths | | |
| | Rd Culvert Opposite P.O. | | | 100% | | 33 RAE 9 Oths | | |
| 25/1 | <u>2/11 A.G.H.</u> | | | | | | | |
| (a) | Kitchen Fittings | | | 100 | | 1375 RAE 30 Oths | | |
| (b) | Ward Latrines) Ablutions) Annexes | | | 90% | | 920 1150 RAE 350 Oths | | |
| (c) | Sage Palm Screen | | | 30 % | | 330 RAE | | Taken over by 2/11 A.G.H. |
| (d) | Ironing Annex | | | 100% | | 250 RAE | 17,18,19,25 | |
| (e) | Water Reticulation | | | 85% | | 307 RAE | 36,39,50,56,40, | |
| (f) | Elect Reticulation | | | 40% | | 200 Oths 95 RAE | 42,55,58,62,65, 76,78,81,88. | |
| (g) | Refrigeration | | | 85% | | | | |
| (h) | Drainage General & Culverts | | | 40% | | 122 RAE 480 Oths | | |
| (i) | Operating Theatre | | | | | | | |
| | (a) Shell | | | 85% | | 800 RAE | | |
| | (b) Floor | | | 30% | | 900 Oths | | |
| | (c) Partitions & Fittings | | | 25% | | 260 RAE | | |
| | <u>Gravel Winning</u> | | | | | | | |
| | Chinaman | | | 1060 yds | | | | |
| | Baihu River | | | 150 yds | | 270 RAE | | |

W. H. Lewis
Major
 O.C. 1 Aust Fd Sqn R.A.E. (AIF)