

TYPICAL GERMAN DUGOUTS

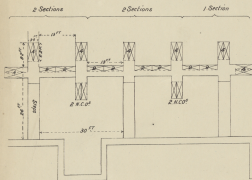
(from Captured Plans, July 1916)

A

DUGOUT FOR 5 SECTIONS. 5 NCO's & 40 men

359 5 152
B

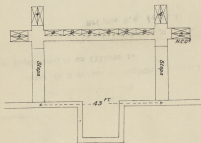
B



= Bed for 2 men

— C —

DUGOUT FOR 3 SECTIONS . 3 NCO's & 24 men



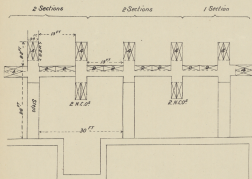
This form of Dugout is
are to be built


Recommended if new ones

TYPICAL GERMAN DUGOUTS

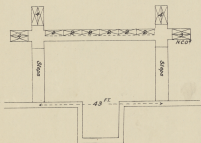
(from Captured Plans, July 1916)

—A— DUGOUT FOR 5 SECTIONS. 5 NCOs & 40 men



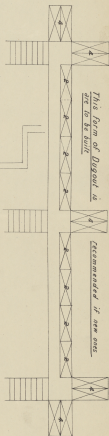
 = Bed for 2 men

—C— DUGOUT FOR 3 SECTIONS. 3 NCOs & 24 men



1st Printing Oct. R.E., G.H.Q., C.150)

—B—



*This form of Dugout is
to be built*

Recommended if new ones

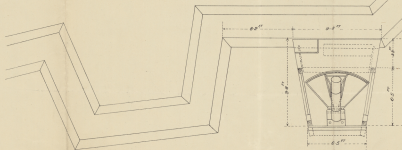
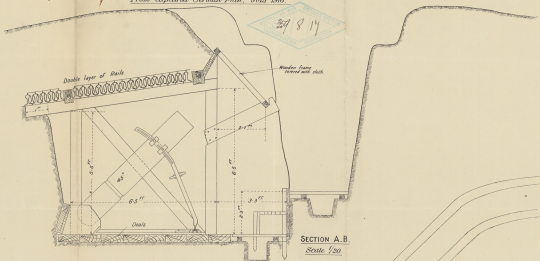
Drawn by F.C. Henshaw
1/21/16 24

'SHELTER FOR AN ALBRECHT MORTAR.

From captured German Plan, July 1916.

GERMAN FIELDWORKS
PART II.

27 8 14



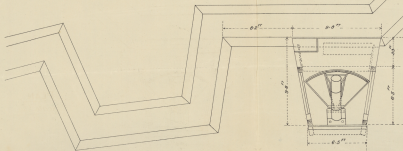
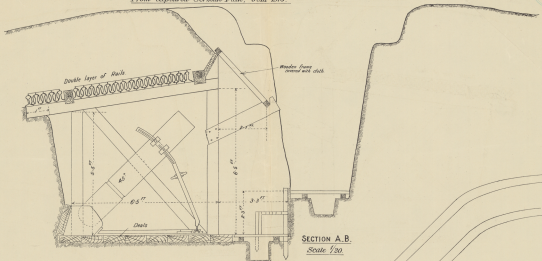
177-100000-100-100000

Drawn by F. G. H. H. H. H. H.
4/21/16 R. E. A. 106

SHELTER FOR AN ALBRECHT MORTAR.

From captured German Plan, JULY 1916.

GERMAN FIELDWORK
SHEET 6.



11" Drawing Co. A.C. 1142 (2-1916)

Drawn by F.G. Newcomb
4/41 R.E. 155

17-8-16

SHELTER FOR AN ALBRECHT MORTAR

359 8 17

AWIN 27
320/28 PART 3