

THE LONDON COLISEUM

*E. W. Moreside
451 Ball St
A. S. J.*



PRICE 2D

HAYCOCK-GADLE CO. CAMBERWELL.

CHAS. BAKER & CO'S

HEAD DEPOT EXPORT & LETTER ORDER DEPT. STORES, LTD.

271 TO 274, HIGH HOLBORN, W.C.

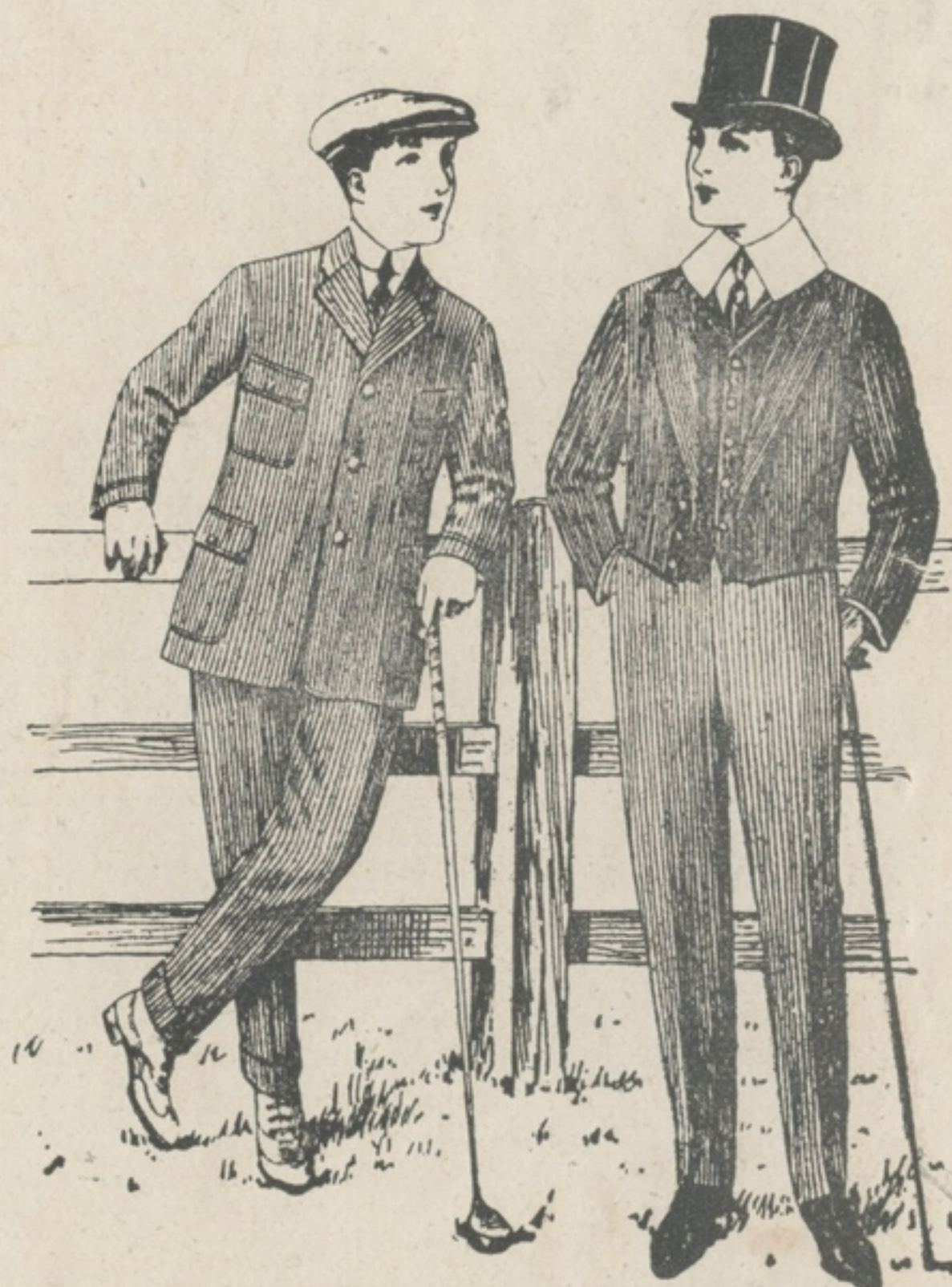
City Branch - - - 41 & 43, LUDGATE HILL
 West End Branches: 137 to 140, TOTTENHAM COURT ROAD
 256, EDGWARE ROAD.
 27 to 33, KING STREET, HAMMERSMITH
 Northern Branch - - 7 to 9, SEVEN SISTERS ROAD, HOLLOWAY
 Croydon Branch - - WHITGIFT HOUSE, 38 & 40, NORTH END.

WE HOLD THE LARGEST & BEST SELECTION IN LONDON OF BOYS' & YOUTHS' SCHOOL CLOTHING & BEING THE ACTUAL MANUFACTURERS OFFER THE BEST VALUE OBTAINABLE

SPECIAL SCHOOL OUTFIT CATALOGUE
 POST FREE ON APPLICATION

SCHOOL OUTFITS

ETON
 HARROW
 RUGBY
 CHARTERHOUSE
 HAILEYBURY
 CHELTENHAM
 MALVERN
 ST. NEOTS
 MARLBOROUGH
 WELLINGTON
 ST. PETERS
 SHREWSBURY
 CLIFTON
 BEDFORD



THE LONDON COLISEUM

Licensed by the Lord Chamberlain to Mr. Oswald Stoll, Chairman and Managing Director, The Coliseum Syndicate, Ltd., Coliseum Buildings, W.C.

Managing Director - - - - - OSWALD STOLL
 Manager - ARTHUR CROXTON
 Musical Director - ALFRED DOVE
 Stage Manager - HENRY CROCKER
 Assistant Manager - HERBERT CHENERY

NOTICE TO VISITORS Visitors are respectfully informed that seats may be booked at the Box Office of this Theatre for the
LONDON OPERA HOUSE and the ALHAMBRA

Tel.: Battersea 1129, Tel.: Kingston P.O. 124

THE SOUTH-WESTERN SANITARY LAUNDRY, LTD.

Balham Park, S.W., & Kingston-on-Thames

With skilled labour, absolute cleanliness, and exceptional hygienic arrangements, we produce Perfect Laundry - Work, and -

Perfect Produce Procures Permanent Patrons

IN ACCORDANCE WITH THE REQUIREMENTS OF THE LONDON COUNTY COUNCIL:-

(a) The public may leave at the end of the performance by all exit and entrance doors and such doors must at that time be open. (b) All gangways, passages and staircases must be kept entirely free from chairs or any other obstructions. (c) Persons must not be permitted to stand or sit in any of the intersecting gangways, and if standing be permitted in the gangways at the sides and rear of the seating, sufficient space must be left for persons to pass easily to and fro. (d) The safety-curtain must be lowered about the middle of the performance so as to ensure its being in proper working order.

PROGRAMME

Week commencing MONDAY, DEC. 11th, 1916

The Management reserves to themselves the right of making any unavoidable alteration in the constitution of the Programme

- 1—OVERTURE
 "Raymond" A. Thomas
- 2—Miss HOPE CHARTERIS
 The Australian Soprano

CHOCOLATES

Obtainable from the ATTENDANTS and in the TEA ROOMS and BARS

MANGARNA CIGARS

5d. each 32/6 per 100

A product of 20 years' study in fine blending, producing a Cigar, selling at 5d., equal in size, shape and -flavour to a 1/- Havana-

On sale throughout the Coliseum

- AND AT -

A. J. VAN RAALTE

Cigar Importer

28, New St., St. Martin's Lane, W.C. and 43, Tothill St., Westminster, S.W.

TELEPHONES—GERRARD 1109, VICTORIA 2464

ALHAMBRA

Leicester Square and Charing Cross Road

Telephone: GERRARD 5064

George Grossmith's and Edward Laurillard's Revue
'The Bing Boys are Here'

By GEORGE GROSSMITH and FRED THOMPSON
 Music by NAT AYER. Lyrics by CLIFFORD GREY
GEORGE ROBEY
ALFRED LESTER
VIOLET LORAINÉ

EVENINGS at 8. MATINEES: Wed., Thurs., Sat.

The New To-Night's Programme, 6.30 & 8.50 MIDDLESEX THEATRE

Drury Lane

From the London Opera House and the London Coliseum
LOOK WHO'S HERE

IN FIVE SCENES Cast includes—

JAMES LEARMOUTH ARTHUR ROBERTS
 Hilda GLYDER Stafford DICKENS Will HYDE
 Billy CARYLL Dorothy GREY LYDIA & FRANCIS
 And an Army of Singers and Dancers

POPULAR PRICES Telephone: Gerrard 1340

Cadbury's Chocolates

OBTAINABLE
FROM THE
ATTENDANTS

ARE DELICIOUS

PURE AND WHOLESOME AND

OF THE HIGHEST QUALITY

Talk War Seals!

Buy War Seals!!

Use War Seals!!!

PROGRAMME—continued

- 3—ZELDA and FRED A JENSEN
In Special Dances
- 4—Miss ELLA SHIELDS
In Ideal Impersonations
- 5—GROCK
The Great French Clown and his Partner
In their Musical Novelty

"A PLACE IN
THE SUN"

Can be found anywhere
on the
SUNNY SOUTH
COAST,
Served by the Brighton
Railway,
Apply Supt. of Line,
L. B. & S. C. Railway,
London Bridge

LONDON OPERA HOUSE, Kingsway

SATURDAY EVENING, DECEMBER 23rd

Mr. OSWALD STOLL will present A GRAND PANTOMIME

Cinderella

IN SEVEN SCENES

Written by AUSTEN HURGON and HERBERT C. SARGENT

Production by Mr. AUSTEN HURGON

The Producer of the Famous Gaiety Pieces "TO-NIGHT'S THE NIGHT" and "THEODORE & Co."

After Saturday Evening, December 23rd, the Pantomime will be played
TWICE DAILY at 2 and 8 p.m.

The Cast includes

FRED EMNEY

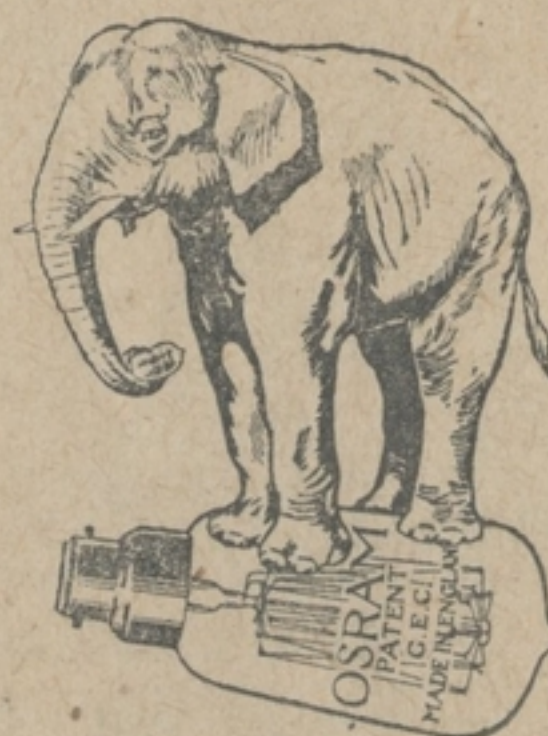
TOM FOY

BROS. EGBERT

LOUIE TINSLEY
MONICA BEVAN

EDITH DRAYSON
FLORENCE BARROW
FLORENCE HARRINGTON
and ELLA RETFORD

ETHEL VARICK
BLODWEN BUTCHER



Strength

OSRAM is the strong lamp, therefore the most economical. It burns brilliantly right to the end of its very long life. There is no stronger or more economical lamp than OSRAM.

Osram

G.E.C.
DRAWN WIRE
Lamps

OSRAM G.E.C. LAMPS

Are exclusively the Product of

British Capital
British Labour
British Material

Made only at Hammersmith, London

See that every lamp sold as OSRAM bears the words "G.E.C., Made in England." Refuse all others.

PHILIP MORRIS

CIGARETTES
OBTAINABLE
OF ATTENDANTS

PHILIP MORRIS
& COMPY., LTD.
22, NEW BOND ST., W.

PROGRAMME—continued

6—Sir GEORGE ALEXANDER

In an Original play in One Act, entitled:

"HOWARD & SON"

By J. D. BERESFORD and KENNETH RICHMOND

Sir Anthony Howard (a city merchant)

Sir GEORGE ALEXANDER

Charles (his confidential clerk) J. T. BEVERIDGE

Mr. George Biggen (a financial agent) CHARLES GLENNY

Scene: Sir Anthony Howard's Private Office in Austin Friars

Scene painted by G. SACKMAN

Stage Manager (for Sir G. Alexander) E. VIVIAN REYNOLDS

CRITERION RESTAURANT

THEATRE
DINNERS
4/6 6/-, 7/6

Popular Grill Rooms

MUSIC ALL DAY

CIGARETTES FOR OUR SOLDIERS

Special Discount of 25 per cent.
on 200 Cigarettes to the
Expeditionary Forces
in France, Africa
and India,
Carriage
Paid

"THE VASSO"
CIGARETTES
ON SALE AT THIS THEATRE

Established
1875

Manufacturers—

Litsica, Marx & Co.,

(ENTIRELY A BRITISH FIRM)

24, PICCADILLY, W. 86, STRAND, W.C.

Special Prices to Clubs & Messes

COJAX—10 FOR 8d.

You are safe
in dealing with

Boots

CHIEF LONDON BRANCH—

182 REGENT ST., W.

Over 100 Branches in London Area,
555 Branches in Town and Country.

Boots Cash Chemists (Southern) Ltd.

BRITISH DOMINIONS

"ALL-IN" POLICY

PROTECTS THE HOME AND ALL IN IT

The House-Holder "All-In" Policy Covers all these Risks for 5/- per £100.

Fire—Loss of Rent—Burglary—Housebreaking—Larceny and Theft—Employer's Liability—(Injuries to Servants, including Casual Labour)—Bursting of Water-Pipes and Apparatus following Frost, Storm-Flood or Tempest—Explosion of Gas or of Domestic Boilers—Mirror Breakage—Public Liability—Linen at Laundry—Lightning—

Thunderbolt—Subterranean Fire—Earthquake—Riots—Strikes—Insurrection—Civil Commotion—Effects Removed while on Holiday or in Store—Effects of Family, Guests, and Servants—Cash and /or Bank Notes up to £25. Can be combined with the House-Owner's "All-In" Cover.

The House-Owner "All-In" Policy Covers all these Risks for 1/6 per £100.

Fire—Lightning—Thunderbolt—Earthquake—Subterranean Fire—Loss of Rent—Riots—Strikes—Insurrection—Civil Commotion—Burglary—Housebreaking—Larceny—Theft—Explosion of Gas or Domestic Boilers—Hot Water and Heating Apparatus—Property—Owners' Liability. Can be combined with the House-Holder's "ALL-IN" Cover.

Write for Explanatory Booklet and Prospectus 857, The British Dominions General Insurance Company, Head Office: British Dominions House, Royal Exchange Avenue, E.C. Reserves Exceed £1,000,000. Application for Agencies invited.

PINOLI'S RESTAURANT

17, Wardour St.

SPECIAL 2/6
PARISIAN
DINNER

Served from 5 p.m. to
9 p.m.

PROGRAMME—continued

7—INTERMISSION

- (a) MARCH—"Prince of Wales" A. Joyce
(b) "Hullo, Europe" ... Alfred Dove
(Echoes of the Day)

PINOLI'S RESTAURANT

17, Wardour St.

SPECIAL 1/6
SUPPER

Consisting of Soup, Fish,
Entrée, or Poultry, Ice,
Cheese, served from 9
p.m. to 12.15 p.m.

HOLBORN RESTAURANT

One Minute from the
Holborn Tube Station

LUNCHEON - 3/-
(1 to 5 p.m.)
DINNER - 3/6
(6 to 9 p.m.)

Accompanied by
High-Class Music

PROGRAMME—continued

8—TOM CLARE

With a Piano and some Songs

FRASCATI

Oxford Street, W.

London's Floral
—Restaurant—

LUNCHEON - 3/-
(1 to 5 p.m.)
DINNER - 5/6
(6 to 9 p.m.)

ORCHESTRA

LONDON

CONCRETE
ROOF

CONCRETE
FLOORS

BONNINGTON HOTEL

SOUTHAMPTON ROW, W.C.

Room, attendance, bath }
and breakfast - - } **5/6 & 6/-**

STEEL FRAME BUILDING

260 ROOMS

Telegrams: Bonnington Hotel, London

Telephone: Museum 1010 (3 lines).



The Coliseum Tea and Refreshment Rooms

REFRESHMENTS IN THE THEATRE AT POPULAR PRICES

| | |
|--|---|
| Tea, per Pot, per Person, freshly made ... 4d. | Ham or Beef per plate 1/- |
| Tea, per Cup 3d. | Bread & Butter, white or brown, 2 slices, 1d. |
| Coffee, per Cup, Black or with Milk ... 3d. | Cake, Almond, Sultana, Cherry, per piece, 2d. |
| Milk, per Glass 2d. | French Pastries 2d. |
| Soda and Milk 4d. | Savoury Toast 4d. |
| Beef Extracts 4d. | Two Poached Eggs on Toast 8d. |
| Lemonade or Soda Water, large... 4d. | One Poached Egg on Toast 5d. |
| Lemonade or Soda Water, small ... 3d. | Toasted Muffin or Crumpet 3d. |
| Ginger Ale 4d. | Toasted Scone 3d. |
| Ginger Beer... .. 4d. | Sandwiches, various 3d. |
| Bananas and Cream 6d. | Buttered Toast 2d. |

☛ QUICK SERVICE ☛ NO WAITING ☛
☛ ☛ Refreshments, Chocolates, Cigars, Cigarettes, etc. ☛ ☛

CLAYTONS'

GOLD MEDAL

TABLE WATERS

As Supplied to the House of Commons.

SUPPLIED TO THIS THEATRE

Soda Water
Seltzer Water
Tonic Water
Lithia Water
Potass Water
Lemonade
Ginger Beer
Ginger Ale
Dry Ginger Ale
Pale Ale
Non-Alcoholic
Lime Juice
Cordial

Can be obtained from
the Attendants, or
in the Refreshment
Rooms or Bars



Three Cheers

IN the Army and Navy "De Reszke" Cigarettes are the most popular of all high-class brands. They are supplied to the officers' messes of over 400 of His Majesty's Ships, including all the leading Ships of the Line. We also send millions of "De Reszke's" every month to Army officers on Active Service, and they are regularly supplied to practically every Officers' Mess at home—irrefutable proof of quality.

De Reszke
The Aristocrat of Cigarettes

SOLD THROUGHOUT
THIS THEATRE

GET
THE
WAR
SEAL
HABIT

PROGRAMME—continued

9 - Monsieur JOSEPH HOLLMAN

The World-famous 'Cellist,' in selections
from his Repertoire

At the Piano CLEMENT HARVEY
(Please see separate leaflet)

Trocadero

CONCERT
TEAS

Served daily in the
Empire Hall

Theatre Suppers

Special Musical
Entertainment

GET
THE
WAR
SEAL
HABIT

PROGRAMME—continued.

10—G. P. HUNTLEY

Supported by Miss IRENE BROWNE & Co.

"SELLING A PUP"

By MARGARET KAYE

| | | | | | |
|---------------------|---|---|---|---|-----------------|
| Gerald | - | - | - | - | G. P. HUNTLEY |
| Geraldine | - | - | - | - | IRENE BROWNE |
| Thorne (Odd Jobber) | - | - | - | - | GEORGE DE LARA |
| Scene | - | - | - | - | A Garden Suburb |

The Soldier's Match-Box

BRYANT & MAY'S

'SERVICE'

Match-Box Cover

(Reg. design No. 642237)

Keeps matches and box dry
in all weathers.



Practice Economy and keep
the "BILLS" down!

ROYAL

EDISWAN

DRAWN WIRE LAMPS

OBTAINABLE FROM ALL
ELECTRICIANS AND
STORES

Fully Licensed under
British Patents
Nos 21513/06 -
27712/03 & others.

EVANS & EVANS

TRADING AS

FRIBOURG & TREYER

ESTABLISHED AT

34, HAYMARKET, S.W.

OVER 200 YEARS

Our Finest Cigarettes, for which we
have a World-Wide Reputation, can be
obtained in this Theatre.

Everything that is required by the
discriminating smoker can be obtained
at the above address.

LONDON OXFORD
CAMBRIDGE

SUN FIRE OFFICE

In addition to Fire
Insurance, the "Sun"
now transacts the fol-
lowing classes of busi-
ness:—Loss of Profits due
to Fire, Burglary, Plate
Glass, Personal Accident;
Sickness and Disease,
Employers' Liability and
Workmen's Compensation,
Third Party Risks
and Fidelity Guarantee.

HEAD OFFICE: Proposal Forms in any
63, Threadneedle of these classes sent
St., London, E.C. on application.

THE ALEXANDER
CLARK
CO LTD



THE SERVANTS' PROBLEM SOLVED

WELBECK
PLATE IS AN
HEIRLOOM

Because it is
handed down
from generation
to generation



STAINLESS
:: CUTLERY ::
"THE GREAT
TIME SAVER"

To clean, simply wash and
wipe with a leather or cloth

Special Trial Offer
A sample Knife sent post
free for - - 1s. 2d.

It will
withstand the
severest acid
test.

Vinegar,
lemon juice,
etc., have no
effect upon it.

STAINLESS CUTLERY
AND WELBECK PLATE
SPOONS AND FORKS
LAST A LIFE TIME

Write for
Catalogues
post free ::

Write for
Catalogues
post free ::

The Alexander Clark
Company Ltd. 125/6, Fenchurch St.
London :: E.C.

Souvenirs 2 2/3/1

COLISEUM :: :: Next Week

Sir GEORGE
ALEXANDER
Mr. J. D. BEVERIDGE & Mr. CHARLES GLENNY
In an Original Play, in One Act, entitled
"HOWARD AND SON"

Mr. CHARLES
HAWTREY
and CO., in
"ELEGANT EDWARD"

MONSIEUR
JOSEPH
HOLLMAN
The World-Famous 'Cellist

Joseph **COYNE**
and CO., in
"STEP IN THE OFFICE"
Adapted by Geo. Grossmith from a story by O. Henry

ROXY LA ROCCA The Wizard of the
:: Harp ::
VARIETIES AND WAR IN PICTURES

CHOCOLATES

Obtainable
from the
ATTENDANTS
and in the
TEA ROOMS
and BARS

PROGRAMME—continued

11—THE FOUR RITCHIES
In "A Cycling Nightmare"

12—WAR IN PICTURES

The New Symbolical Scenery designed by H. KEMP PROSSER

GOD SAVE THE KING 11/12/1916

CHOCOLATES

Obtainable
from the
ATTENDANTS
and in the
TEA ROOMS
and BARS

HEAR—
TOM CLARE
AT THE PIANO ON
'HIS MASTER'S VOICE'
RECORDS

Ask our dealers to play to you any of these records.

- | | |
|--|---|
| B.450 { A Fishy, Fishing Story (Hanray). Beautiful Girlie Girls (Tom Clare). | C.540 { Once the Kaiser's Army (arr. by Tom Clare). It's refined (Lipton). |
| C.538 { Tom Clare's Version of the Telephone Winkelheimer's Motor Ride (Marsh). | C.668 { Who bashed Bill Kaiser (Clare). My Hymn of Hate (Sterndale Bennett). |

List Post Free from The Gramophone Co. Ltd., Hayes, Middlesex.

