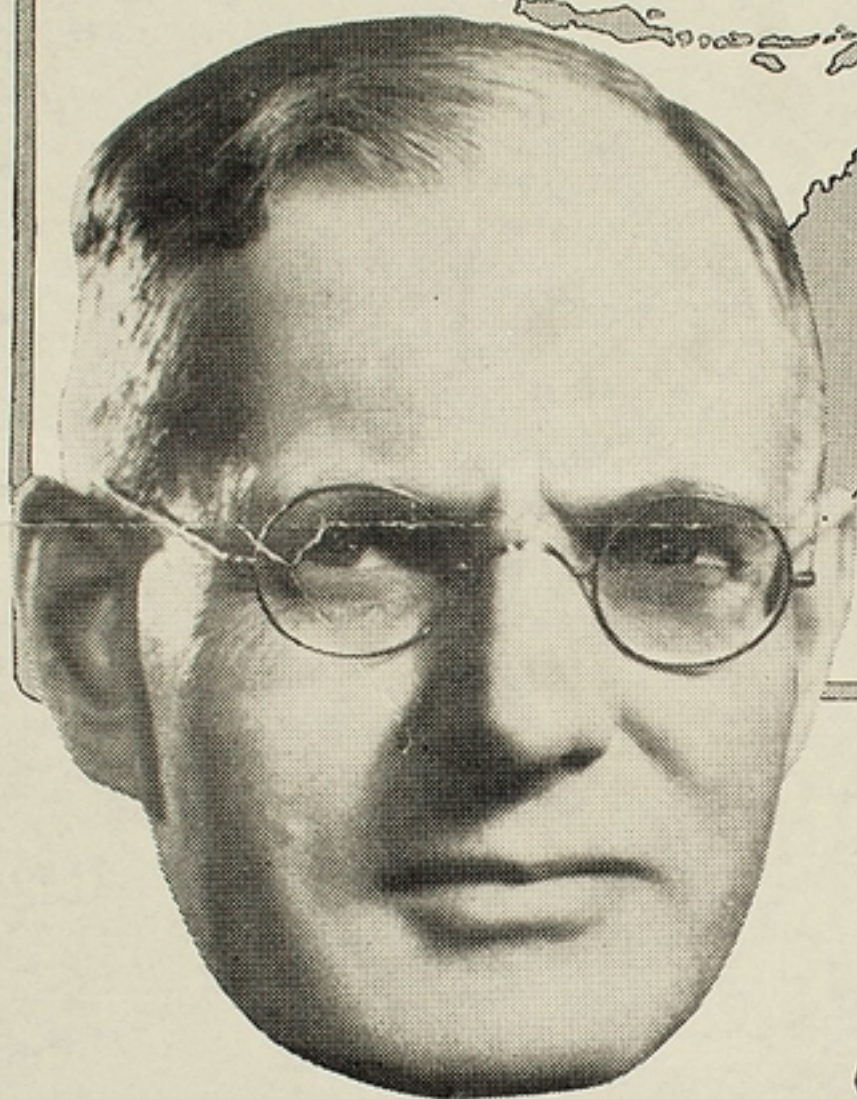
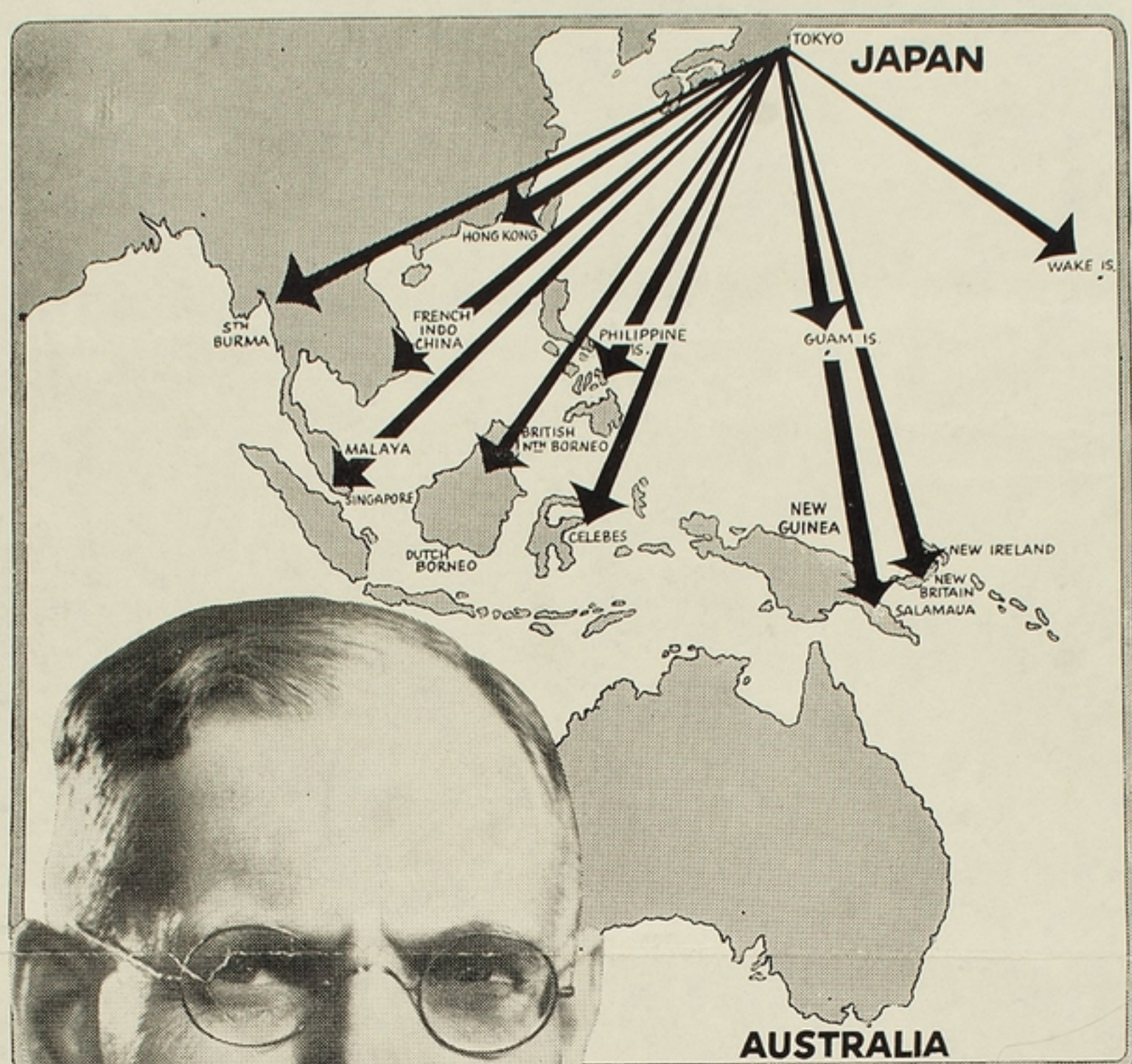


The Spearhead reaches SOUTH - ALWAYS SOUTH!



AUSTRALIANS, you must be seized with the dire fact that we are in imminent and deadly peril. The spearhead of the Japanese hordes reaches south—*always south*.

I can put it no more plainly than this . . . *Australia faces the darkest hour in her history.* Lands to the north of us which believed themselves safe and free already have known the iron heel of the invader; or momentarily await his landing.

The Government has striven ceaselessly on your behalf; has stated your claims overseas; has called on you for more and still more effort; has exhorted you to realise to the full that what was but a threat yesterday may mean invasion and desolation in the very near future.

If you fail to answer that call you help the enemy.

For many of you, life still moves along pleasant paths. For many, the working pace of peace time has not given place to the pressure appealed for in war production. For many of you, readiness to provoke strikes or lockouts suggests an ignorance of, or disregard for, national and personal security.

Those things cannot continue. We are now a nation compelled to fight, to organise every resource we have as an indispensable contribution to the total war effort of the united people.

Those Australians who are fighting, working, adapting themselves grimly to a wartime way of life cannot be let down by a careless, carefree section who may wreck the whole future of our race.

John Curtin

IT'S TOTAL WAR

YOU MUST OBEY THESE RULES



STOP LOCKOUTS, STOP STRIKES

Keep war production at full blast. How can we ask Britain and America to strike for Australia if Australia strikes against itself?



DON'T WASTE MONEY, FOOD AND PRECIOUS PETROL

Maximum personal economy is essential to safety.



HELP YOUR LOCAL A.R.P. WARDENS ALL YOU CAN

They are doing a vital job for your safety. Join them yourself—better to be rescuer than rescued.



BLACKOUT REGULATIONS MUST BE OBSERVED

One lighted house in a street can wreck a city. How would you feel for ever after if the fault were yours?



IN AN EMERGENCY STAY PUT AND SIT TIGHT

Don't move from your home or office unless ordered by a responsible official. Frantic crowds only create panic. Keep a clear head.



KEEP YOUR MOUTH SHUT

Rumours are often deliberately spread by the enemy. Don't listen to them; don't repeat them.

Dictators **FORCE** obedience. Democracy requests it, but in wartime, observance of regulations **MUST** be a rigid rule for all.

EVERYONE must Fight or Work!

D. R. L. NO. 1295

A. W. M.
LIBRARY

Classⁿ No. 406.13

Cat^d

Index^d

Place^d

Index^d