

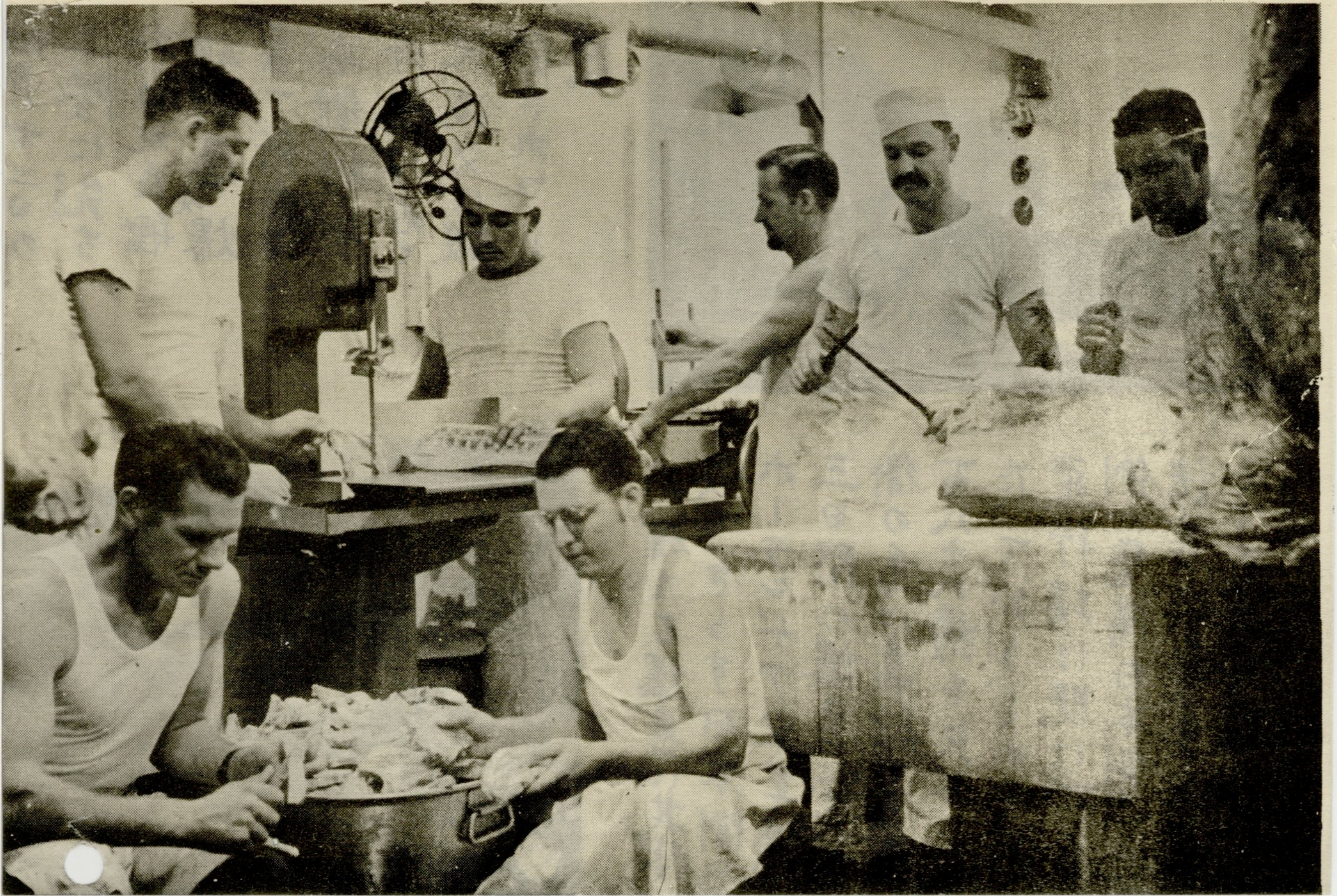
J190

黎明來り
ここに蘭領の
回復始まる。
まさに攻塵に移る
直前戦闘艦上
より見たる
蘭領ニューギニア。

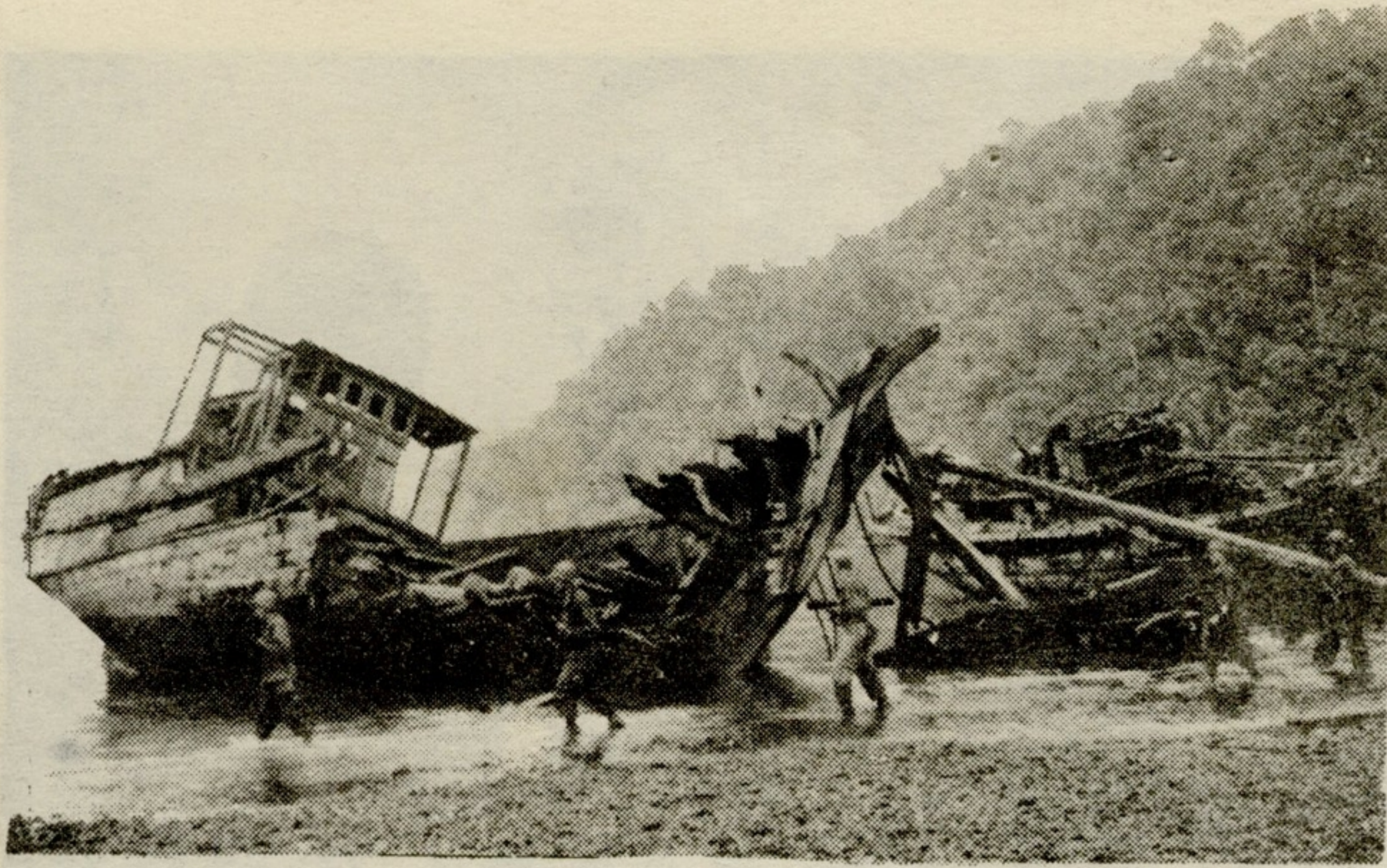




上陸作戰に先だつ揚陸用大
砲内の光景將兵と武器器々材
器材武器と將兵の錯雜
まづ腹ごしらへをして戦にか
る。大砲の台所で腕こまの厨
夫が名人ぶりを發揮して居る所



四月廿二日の
 上陸に先^まち
 行はれた艦
 砲射^及爆
 夷で所在回
 本側艦船
 舟艇は悉く
 沈没又は破
 碎されつくし
 た。



正確なる爆夷に其殘^{ざん}
 骸^{がい}をさらす日本側の
 ホーランチア空軍機
 三日間の爆夷に其防
 衛の爲に集結した二
 百八十八機を失ふにい
 たっておりしかも其
 飛行場は既に聯合
 側が整備、日本側前進
 諸基地の爆夷に使用
 して居る。

Page 1. Dawn of a New Era.
The Allies' re-capture of Dutch territory has begun. Hollandia is in our hands. This picture was taken at dawn on board a battleship just before the invasion of Dutch New Guinea began.

Pages 2 & 3. Pre-invasion scenes. Personnel and equipment crowd the decks of a landing craft. While the men relax on deck a hearty meal is being prepared for them by the ship's cooks (see lower picture). They are not hungry when they go into action.

Page 4. Intense bombing and naval bombardment before the landing
(a) took place on April 22 destroyed every vessel and every plane.

This picture of a line of planes on a Hollandia airstrip show the accuracy of the Allied bombing. 288 Japanese planes were brought in to defend Hollandia, but they were all destroyed by Allied air attacks within three days. Allied planes are now using the three Hollandia airstrips to bomb advanced Jap bases.