

**AWM4**

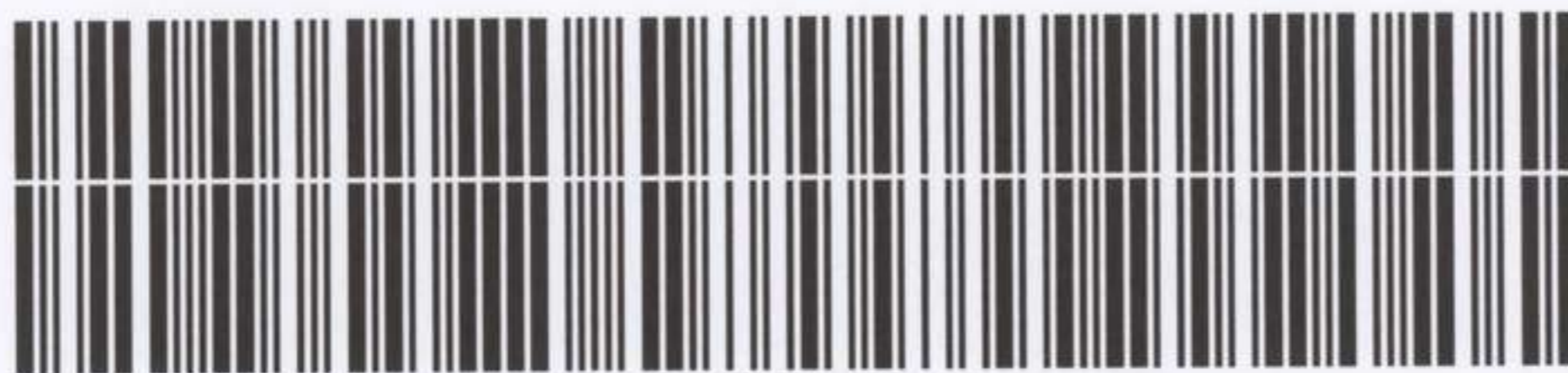
**Australian Imperial Force unit war diaries,  
1914-18 War**

Repatriation & Demobilisation

**Item number:** 30/1/8 Part 4

**Title:** Repatriation and Demobilisation, AIF

May 1919



AWM4-30/1/8PART4

APPENDIX "G" 153

18,000-12/1 -8723

**CONFIDENTIAL.**

ORIGINAL.  
~~DUPLICATE.~~  
~~TRIPLICATE.~~

Australian Imperial Force.

**WAR DIARY**

OF

INDUSTRIAL EMPLOYMENT (I.D.3. Section) NON-MILITARY EMPLOYMENT

FOR

M A Y 1919

Signature of Officer compiling

*[Handwritten signature]*

INDUSTRIAL EMPLOYMENT (I.D.3.)

Signature of Officer Commanding

*[Handwritten signature]*

O. i/c INDUSTRIAL EMPLOYMENT.

323

WAR DIARY

Army Form C. 2118.

Instructions regarding War Diaries and Intelligence Summaries are contained in F. S. Regs., Part II. and the Staff Manual respectively. Title pages will be prepared in manuscript.

or  
INTELLIGENCE SUMMARY.

(Erase heading not required.)

| Place                  | Date                    | Hour | Summary of Events and Information<br>-:1:-  | Remarks and references to Appendices |
|------------------------|-------------------------|------|---|--------------------------------------|
| 6 Eaton Place, London. | 1/5/19<br>to<br>31/5/19 |      | <p>During the month ended May, 31st, 1919, applications have still been steadily arriving from men awaiting repatriation to Australia and the results in finding employment and getting them placed out to work have been very satisfactory. The rapid growth of unemployment in the United Kingdom has, however, to a certain extent limited our action in procuring employment in various industries.</p> <p>Although in many cases employers have offered to give employment to Australians, but owing to the advice from Unions that in the district concerned there is unemployment, this Department has been unable to proceed further, as it is distinctly understood by the Trade Unions that it is not the policy of the A. I. F. Educational Scheme to place any Australians in industries in districts where unemployment exists.</p> <p>In order that the wishes of the Trade Unions may be respected in this way, it has been necessary to canvas practically the whole of the United Kingdom, and to keep in close communication with the Unions, in order that men may only be placed in districts not affected with unemployment. This understanding with the Unions of this country has given us the co-operation of those Organisations which was absolutely essential for success.</p> <p>Many men for whom applications are held and positions found for them, have applied asking that their applications may be cancelled, as the prospects of their early return to Australia appear to be bright, owing to the increased facilities now existing in the Shipping line.</p> <p>Applications received during this month have in many cases been accompanied by a guarantee of employment, which has been obtained while the soldiers have been on their fourteen days leave from depot. This has greatly facilitated the placing of men.</p> <p>It is very gratifying to notice from reports received from Area Officers and also from Directors of firms and employers that personnel engaged on Non-military Employment are "Making good" and that only with a very few exceptions are the advantages to be gained by this leave not being taken full advantage of.</p> |                                      |

324

WAR DIARY

15  
Army Form C. 2118.

Instructions regarding War Diaries and Intelligence Summaries are contained in F. S. Regs., Part II. and the Staff Manual respectively. Title pages will be prepared in manuscript.

or  
INTELLIGENCE SUMMARY.

(Erase heading not required.)

| Place                 | Date              | Hour | Summary of Events and Information   | Remarks and references to Appendices |
|-----------------------|-------------------|------|---|--------------------------------------|
| 6 Eaton Place, London | 1/5/19 to 31/5/19 |      | <p style="text-align: center;">-:2:-</p> <p>Applications for transfers to new employment are becoming very frequent, but in quite a number of cases are "Not recommended" as it appears from the letters produced from the applicants that the transfer is required to learn a trade totally different to the one previously engaged on, or that followed in Australia. Transfers are only approved when the present employment is unsuitable or the experience in the new work would be a benefit to them on return to civil occupation.</p> <p>A very big percentage of officers and men whose term of employment is nearing completion are applying for extensions, and although in the case of officers, it is not desirable, owing to military and shipping requirements, to grant extensions, it is essential that some cases should be approved in order that the applicant may be able to complete his course of training, but it is only in these special cases that recommendations are being made.</p> <p>Some difficulty is being experienced, after papers have been finalised, in getting men on their jobs in a reasonable time - this to a large extent is unavoidable, being caused by the continual transfer of men from one station to another.</p> <p>A few applications from officers and men on N.M.E. leave to visit France and Belgium for the purposes of gaining experience, have been received, and where such experience can not be obtained in this country, applications are recommended.</p> <p>Slight delays have been met with in connection with the payment of subsistence allowances. The fluctuation of wages, transfers, men losing their positions, and so on, necessarily entails a slight delay before financial arrangements can be completed and men actually paid. These cases are, however, very few.</p> <p>Applications for N.M.E. for long periods, i.e. exceeding 3 months, are being very carefully gone into, and where considered necessary, the period is reduced. A large number of applications from officers are being submitted, and in accordance with instructions are being very carefully scrutinized, and only in cases of educational value, is Non-Military Employment recommended.</p> |                                      |

325

# WAR DIARY

Army Form C. 2118.

Instructions regarding War Diaries and Intelligence Summaries are contained in F. S. Regs., Part II. and the Staff Manual respectively. Title pages will be prepared in manuscript.

## or INTELLIGENCE SUMMARY.

(Erase heading not required.)

| Place                    | Date                              | Hour                              | Summary of Events and Information   | Remarks and references to Appendices |                                   |                                   |                                    |                                  |                               |                       |      |      |      |     |      |                          |      |      |      |     |      |                     |     |     |      |     |      |  |
|--------------------------|-----------------------------------|-----------------------------------|---|--------------------------------------|-----------------------------------|-----------------------------------|------------------------------------|----------------------------------|-------------------------------|-----------------------|------|------|------|-----|------|--------------------------|------|------|------|-----|------|---------------------|-----|-----|------|-----|------|--|
| 6 Eaton Place London     | 1/5/19<br>to<br>31/5/19           |                                   | <p style="text-align: center;">-:3:-</p> <p>The appointment of Area Officers, and the sub-division of the United Kingdom for the purpose of administering Non-Military Employment personnel, is working exceedingly well, as it is possible for these officers to carry out administrative work more expeditiously and efficiently than was possible through Headquarters.</p> <p>The following will shew for the various months the figures of applications received, recommended, and men actually placed:-</p> <table style="margin-left: auto; margin-right: auto; border-collapse: collapse;"> <thead> <tr> <th style="text-align: left;"></th> <th style="text-align: center;"><u>To the end<br/>of February</u></th> <th style="text-align: center;"><u>For the month<br/>of March</u></th> <th style="text-align: center;"><u>For the month<br/>of April.</u></th> <th style="text-align: center;"><u>For the month<br/>of May.</u></th> <th style="text-align: center;"><u>To the end<br/>of May.</u></th> </tr> </thead> <tbody> <tr> <td>Applications received</td> <td style="text-align: right;">3585</td> <td style="text-align: right;">1180</td> <td style="text-align: right;">1126</td> <td style="text-align: right;">898</td> <td style="text-align: right;">6789</td> </tr> <tr> <td>Applications recommended</td> <td style="text-align: right;">1352</td> <td style="text-align: right;">1155</td> <td style="text-align: right;">1315</td> <td style="text-align: right;">948</td> <td style="text-align: right;">4770</td> </tr> <tr> <td>Men actually placed</td> <td style="text-align: right;">366</td> <td style="text-align: right;">934</td> <td style="text-align: right;">1320</td> <td style="text-align: right;">708</td> <td style="text-align: right;">3328</td> </tr> </tbody> </table> <p>During the month 147 extensions have been granted, making a total up to May 31st of 230.</p> <p>The difficulty which had previously been experienced through the Ordnance Department, not being in a position, on demand, to supply tools, has been obviated by permission having been granted this Department to locally purchase Tools, which were urgently required and could not be procured through Ordnance.</p> |                                      | <u>To the end<br/>of February</u> | <u>For the month<br/>of March</u> | <u>For the month<br/>of April.</u> | <u>For the month<br/>of May.</u> | <u>To the end<br/>of May.</u> | Applications received | 3585 | 1180 | 1126 | 898 | 6789 | Applications recommended | 1352 | 1155 | 1315 | 948 | 4770 | Men actually placed | 366 | 934 | 1320 | 708 | 3328 |  |
|                          | <u>To the end<br/>of February</u> | <u>For the month<br/>of March</u> | <u>For the month<br/>of April.</u>  | <u>For the month<br/>of May.</u>     | <u>To the end<br/>of May.</u>     |                                   |                                    |                                  |                               |                       |      |      |      |     |      |                          |      |      |      |     |      |                     |     |     |      |     |      |  |
| Applications received    | 3585                              | 1180                              | 1126  | 898                                  | 6789                              |                                   |                                    |                                  |                               |                       |      |      |      |     |      |                          |      |      |      |     |      |                     |     |     |      |     |      |  |
| Applications recommended | 1352                              | 1155                              | 1315  | 948                                  | 4770                              |                                   |                                    |                                  |                               |                       |      |      |      |     |      |                          |      |      |      |     |      |                     |     |     |      |     |      |  |
| Men actually placed      | 366                               | 934                               | 1320  | 708                                  | 3328                              |                                   |                                    |                                  |                               |                       |      |      |      |     |      |                          |      |      |      |     |      |                     |     |     |      |     |      |  |

326

WAR DIARY

Army Form C. 2118.

Instructions regarding War Diaries and Intelligence Summaries are contained in F. S. Regs., Part II. and the Staff Manual respectively. Title pages will be prepared in manuscript.

or  
INTELLIGENCE SUMMARY.

(Erase heading not required.)

| Place                                  | Date              | Hour              | Summary of Events and Information |             |              |  | Remarks and references to Appendices |
|--|-------------------|-------------------|-----------------------------------|-------------|--------------|--|--------------------------------------|
| 6 Eatpn Place London                   | 1/5/19 to 31/5/19 |                   | -:4:-                             |             |              |  |                                      |
| <u>INCREASE AND DECREASE OF STAFF.</u> |                   |                   |                                   |             |              |  |                                      |
| No.                                    | Rank.             | Name              | Unit                              | On Strength | Off Strength |  |                                      |
| 2617                                   | Sgt.              | Bannister R. P.   | 4th R.O.C.                        | 2 - 5 - 19  |              |  |                                      |
| 7028                                   | Pte.              | Colch M. D.       | 49th Battalion                    | 2 - 5 - 19  |              |  |                                      |
| 7498                                   | Dvr.              | Woodward G. A. E. | 15th Battery                      | 2 - 5 - 19  |              |  |                                      |
| 781                                    | CQMS              | Franklin F. P.    | 3rd Pioneers                      | 3 - 5 - 19  |              |  |                                      |
| 7308                                   | Sgt.              | O'Loughlin H. V.  | 4th "                             | 5 - 5 - 19  |              |  |                                      |
| 2994                                   | Pte.              | Freeman M.        | 5th Fld. Amb.                     | 9 - 5 - 19  |              |  |                                      |
| 16130                                  | Bar.              | Sayer A. G.       | 10th Battery                      | 21 - 5 - 19 |              |  |                                      |
| 7102                                   | Pte.              | Gawne J.          | 13th Battalion                    | 22 - 5 - 19 |              |  |                                      |
| 2378                                   | L/Cpl.            | Green E. R.       | 2nd Pioneers                      | 23 - 5 - 19 |              |  |                                      |
| 9                                      | Sgt.              | Opie N.           | 3rd Pioneers                      | 24 - 5 - 19 |              |  |                                      |
| 2652                                   | Pte.              | Salthouse W. J.   | 3rd "                             | 24 - 5 - 19 |              |  |                                      |
| 4074                                   | Pte.              | Holmes G. H.      | 4th "                             | 26 - 5 - 19 |              |  |                                      |
| 2249                                   | Cpl.              | Wennerbon W. C.   | 4th A.B.G.R.O.C.                  | 29 - 5 - 19 |              |  |                                      |
| 1662                                   | Dvr.              | James A.          | 3rd Pioneers                      | 31 - 5 - 19 |              |  |                                      |
|  | Capt.             | Hayes P. J.       | 14th Battalion                    |             | 2 - 5 - 19   |  |                                      |
|  | Lieut.            | Goodwin E. G.     | 1st A.T.C.E.                      |             | 3 - 5 - 19   |  |                                      |
|  | Lieut.            | Holloway E.       | 27th Battalion                    |             | 8 - 5 - 19   |  |                                      |
|  | Capt.             | Polson A. L.      | 5th F. C. E.                      |             | 13 - 5 - 19  |  |                                      |
|  | Lieut.            | Withers R. B.     | Reserve List                      |             | 26 - 5 - 19  |  |                                      |
| 1131                                   | Sgt.              | Dawson C. K.      | 10th Battn.                       |             | 17 - 5 - 19  |  |                                      |
| 1056                                   | "                 | Chandler H.       | 8th M.G.Coy.                      |             | 19 - 5 - 19  |  |                                      |
| 271                                    | Cpl.              | Black H. N.       | 26th Battn.                       |             | 22 - 5 - 19  |  |                                      |
| 35323                                  | Gnr.              | Chenery A.        | 3rd D. A. C.                      |             | 22 - 5 - 19  |  |                                      |
| 3544                                   | 2 A/M             | Gumley L. C.      | 4th Squad. A.F.C.                 |             | 22 - 5 - 19  |  |                                      |
| 2313                                   | Sgt.              | Crutch C. E.      | 30th Battalion                    |             | 15 - 5 - 19. |  |                                      |

ADMITTED TO HOSPITAL.

327

WAR DIARY

160  
Army Form C. 2118.

Instructions regarding War Diaries and Intelligence Summaries are contained in F. S. Regs., Part II. and the Staff Manual respectively. Title pages will be prepared in manuscript.

or  
INTELLIGENCE SUMMARY.

(Erase heading not required.)

| Place                | Date              | Hour | Summary of Events and Information     |        |                  |                 | Remarks and references to Appendices |
|----------------------|-------------------|------|---------------------------------------|--------|------------------|-----------------|--------------------------------------|
| 6 Eaton Place London | 1/5/19 to 31/5/19 |      | -:5:-<br><u>ADMITTED TO HOSPITAL.</u> |        |                  |                 |                                      |
|                      |                   |      | No.                                   | Rank.  | Name             | Unit            | FROM TO                              |
|                      |                   |      |                                       | Lieut. | Goodwin E. G.    | 1st A.T.C.E.    | 26 - 2 - 19 3 - 5 - 19               |
|                      |                   |      | 6566                                  | Pte.   | Parker W. F.     | 14th Battalion  | 23 - 2 - 19 still in Hosp.           |
|                      |                   |      | 16650                                 | Dvr.   | Brown W.         | 1st F.C.E.      | 24 - 3 - 19 do.                      |
|                      |                   |      | 3025                                  | Dvr.   | Giles C. W.      | 5th F.C.E.      | 14 - 4 - 19 20 - 5 - 19              |
|                      |                   |      | <u>SICK IN BILLET.</u>                |        |                  |                 |                                      |
|                      |                   |      | 39078                                 | Gnr.   | Moy P.           | 103rd How. Bty. | 30 - 4 - 19 2 - 5 - 19               |
|                      |                   |      | 5439                                  | Pte.   | Russell E. M.    | 56th Battalion  | 22 - 4 - 19 15 - 5 - 19              |
|                      |                   |      | 28822                                 | Gnr.   | Black L. G.      | 2nd M.T.M.B.    | 21 - 5 - 19 25 - 5 - 19              |
|                      |                   |      | 266                                   | Cpl.   | Josephson W. M.  | 101st How Bty   | 22 - 5 - 19 25 - 5 - 19              |
|                      |                   |      | 8242                                  | Spr.   | Kelly T. B. P.   | 1st Tun. Coy.   | 23 - 5 - 19 24 - 5 - 19              |
|                      |                   |      | <u>ABSENT ON LEAVE</u>                |        |                  |                 |                                      |
|                      |                   |      |                                       | Lieut. | Malcolm C. H.    | 3rd Div. Art.   | 19 - 5 - 19 still on leave           |
|                      |                   |      |                                       | Lieut. | Duggan D.        | 3rd Pioneers    | 17 - 5 - 19 26 - 5 - 19              |
|                      |                   |      | 3690                                  | L/Cpl. | Barnicoat C.P.B. | 13th Battalion  | 12 - 5 - 19 25 - 5 - 19              |
|                      |                   |      | 19344                                 | Sgt.   | Martin G. A.     | 32nd Battalion  | 19 - 5 - 19 28 - 5 - 19              |
|                      |                   |      | 22026                                 | Sgt.   | Wise G. J.       | 30th Battery    | 20 - 5 - 19 24 - 5 - 19              |
|                      |                   |      | 17250                                 | Dvr.   | Lee F.           | 2nd F.C.E.      | 22 - 5 - 19 31 - 5 - 19              |
|                      |                   |      |                                       |        | <u>A. W. L.</u>  |                 |                                      |
|                      |                   |      | 2049                                  | Sgt.   | Cameron D. C.    | 6th T.M.B.      | 29 - 5 - 19 still A.W.L.             |

WAR DIARY

Army Form C. 2118.

Instructions regarding War Diaries and Intelligence Summaries are contained in F. S. Regs., Part II. and the Staff Manual respectively. Title pages will be prepared in manuscript.

or  
INTELLIGENCE SUMMARY.

(Erase heading not required.)

Summary of Events and Information

Remarks and references to Appendices

| Place                | Date              | Hour | Summary of Events and Information   | Remarks and references to Appendices |
|----------------------|-------------------|------|---|--------------------------------------|
| 6 Eaton Place London | 1/5/19 to 31/5/19 |      | <p style="text-align: center;">-:6:-</p> <p>The following will give more detailed information concerning the work of the Sub-Section of this branch</p> <p><u>1.D.3.a. SHIPBUILDING:-</u></p> <p>During the present month 26 applications have been recommended and sent forward to 5.D. Vide "B" and 33 men were actually placed in employment.</p> <p>On the 5th May this Sub-section was taken over from Captain Sewell, M.C. by Lieutenant Witchers D.C.M. and on the 26th May, on the latter Officer proceeding on N.M.E., the Sub-section was again taken over by Captain Sewell with Lieutenant R.R. Wood assisting.</p> <p>Although the figures for this month are very small the progress is considered satisfactory as nearly all applicants have been suitably placed.</p> <p>The reports from various Shipyards, reflecting credit on the work being done by Australians in their yards, are still being received.</p> <p>A weekly list of labor requirements are being furnished by Messrs. Vickers Limited, Barrow-in-Furness and shew a big demand for Shipwrights, Joiners, Redleaders, Loftsmen, Painters, Cabinetmakers, Boatbuilders.</p> <p>Owing to the shortage of work for Joiners in the Shipyard controlled by Messrs. Swan Hunter &amp; Wigham Richardson Limited, with whom many Australians are employed, nine men had to be withdrawn and placed elsewhere.</p> <p>Openings are still held for Loco and Marine Boilermakers, but there is not a big demand for applicants for this work.</p> |                                      |

229



WAR DIARY

Army Form C. 2118.

Instructions regarding War Diaries and Intelligence Summaries are contained in F. S. Regs., Part II. and the Staff Manual respectively. Title pages will be prepared in manuscript.

INTELLIGENCE SUMMARY.

(Erase heading not required.)

| Place                | Date              | Hour | Summary of Events and Information   | Remarks and references to Appendices |
|----------------------|-------------------|------|---|--------------------------------------|
| 6 Eaton Place London | 1:5:19 to 31:5:19 |      | <p style="text-align: center;">-:7:-</p> <p><u>1.D.3.a. SHIPBUILDING:-</u></p> <p>CARDIFF, SWANSEA, NEWPORT and SOUTH WALES were canvassed by a representative of this Department. The yards visited were reluctant to entertain seriously employing any number of our men owing to the unrest of the workers then employed. Boilermakers were badly needed in many of the Shops and Yards, but a strike was in progress with the men engaged and employers refused to talk of taking any more men on until this was over, the men had been many weeks away, but a settlement was anticipated.</p> <p>The Trade Unions concerned were not too sympathetic with our men entering the yards in these districts, as the work is not of a constant nature, being mostly repair work.</p> <p><u>1.D.3.b. GENERAL ENGINEERING:-</u></p> <p>During the month 184 applications has been sent forward recommended and 109 men actually put out to work.</p> <p>The general results of this section for the past month have been encouraging and quite a number of men have been placed with large Engineering firms in various parts of the United Kingdom.</p> <p>In this section a large number of applications have been received from semi-skilled men, such as part-time apprentices and labourers, and in order to secure training for these men a special effort has been made and a circular letter drafted and sent out to a great number of firms, covering all districts; the replies received up to date have not been at all satisfactory. Although all the firms express their willingness to assist, should the opportunity occur, the big difficulty is that such a large number of young men are being demobilised from the Imperial Army, and that, with the return of old employees, the firms are not in a position at present to entertain the special proposal as put forward by this section, also in view of the fact that in many instances big Engineering works are at present in a somewhat unsettled state, owing to the cessation of war work and the return to civil manufacture.</p> |                                      |

330

WAR DIARY

Army Form C. 2118.

Instructions regarding War Diaries and Intelligence Summaries are contained in F. S. Regs., Part II. and the Staff Manual respectively. Title pages will be prepared in manuscript.

or  
INTELLIGENCE SUMMARY.

(Erase heading not required.)

| Place                  | Date                     | Hour | Summary of Events and Information   | Remarks and references to Appendices |
|------------------------|--------------------------|------|---|--------------------------------------|
| 5 Eaton Place, London. | 1/5/19<br>to<br>31/5/19. |      | <p style="text-align: center;">--:8:--</p> <p><u>1.D.3.B. GENERAL ENGINEERING:--(Cont'd).</u></p> <p>Several Ironworks in South Wales were visited by a representative of this Department, but the various firms interviewed did not desire much labor, unskilled being plentiful whenever it was required.</p> <p>In one yard Draughtsmen were needed, also several Moulders, and as suitable applicants are waiting positions the jobs will be filled.</p> <p>A difficulty has been met in placing Plumbers of which many applications are filed waiting completion.</p> <p>As the general rule it has not been hard to place skilled men, in fact sufficient applications for many trades are not held to fill the vacant jobs.</p> <p><u>1.D.3.c. ELECTRICAL, AEROPLANES &amp; MOTORS:--</u></p> <p><u>ELECTRICAL:--</u></p> <p>Captain A.L. Polson, M.C., Officer-in-Charge of this Sub-section, on proceeding to Non-Military Employment on the 8th instant handed over to Captain L. Sewell, M.C. During the month 49 applications have been recommended and 38 men actually placed in Non-Military Employment.</p> <p>A big demand exists for fully experienced men in Electrical work, but most applications held are for men having very little experience and for these, it is only with considerable difficulty positions are found.</p> <p>Many applications for Electrical work are referred to the Director of Education for placing in schools.</p> | Vide "B"                             |

188

WAR DIARY

167  
Army Form C. 2118.

Instructions regarding War Diaries and Intelligence Summaries are contained in F. S. Regs., Part II, and the Staff Manual respectively. Title pages will be prepared in manuscript.

or  
INTELLIGENCE SUMMARY.

(Erase heading not required.)

| Place                 | Date              | Hour | Summary of Events and Information  | Remarks and references to Appendices |
|-----------------------|-------------------|------|--|--------------------------------------|
| 6 Eaton Place, London | 1:5:19 to 31:5:19 |      | <p><u>1.D.3.c. ELECTRICAL - AEROPLANES - MOTORS</u> (Cont'd).</p> <p><u>Aeroplanes:-</u><br/>During the month 12 applications have been recommended and 18 men placed on their jobs.</p> <p>It has not been possible during this month to do very much for placing men in this class of work as direct Aeroplane construction is at a "standstill" - although in a few cases it has been possible to get a few men out for experience.</p> <p><u>MOTORS:-</u><br/>201 applications have been sent forward to <u>5.D.</u> and 161 men put out to work.</p> <p>The progress of this section has been very satisfactory.</p> <p>A visit of inspection was paid to Tyler's School of Motoring where over 100 students are receiving a course of instruction in Motor Engineering. After going carefully into the whole running and organisation of this school, it was seen that Mr. Tyler, the principal, is giving the students, who have a thorough desire to learn, every opportunity of doing so, and the consensus of opinion amongst the men, who are in attendance is, that they are being well and efficiently taught, and on the completion of their course will be or more or less expert Motor drivers, and capable of doing any small repairs to cars that they may have to drive at any time.</p> <p>The men who have been there the longest, about eight weeks, are already efficient drivers and have been taught to handle the mechanism of various cars and are already able to effect any minor repairs.</p> <p>There is no doubt, however, that there are a small number of men attending the school who are taking no interest in their work, and do not attend regularly, and who have taken up the course purely with a view to getting away from France. Arrangements are being made for them to be immediately withdrawn. The bulk of the students, however, are taking great interest in their work.</p> |                                      |

WAR DIARY

165  
Army Form C. 2118.

Instructions regarding War Diaries and Intelligence Summaries are contained in F. S. Regs., Part II and the Staff Manual respectively. Title pages will be prepared in manuscript.

or  
INTELLIGENCE SUMMARY.

(Erase heading not required.)

| Place                 | Date                    | Hour | Summary of Events and Information   | Remarks and references to Appendices |
|-----------------------|-------------------------|------|---|--------------------------------------|
| 6 Eaton Place, London | 1.5.19<br>to<br>31.5.19 |      | <p style="text-align: center;">-10-</p> <p><u>1.D.3.c. MOTORS - AEROPLANES - ELECTRICAL (CONTINUED)</u></p> <p><u>Motors.</u> (Cont'd)</p> <p>Employers generally, are anxious to secure the services of our experienced men, as a shortage exists, and work is plentiful. The improver and apprentice, however, are not in demand, as many of this class of men have just been reinstated after discharge from the army.</p> <p>All Body Makers and Painters have been placed and many vacancies are still held for this class of worker.</p> <p>Much motor work is held up owing to Government restrictions not permitting of certain spare parts to be imported at present - this complaint is general and as soon as these parts are available, much more work will be available and more men put on.</p> <p><u>1.D.3.d. WOOLS &amp; TEXTILES</u></p> <p>This sub-section of the A.I.F. Educational service which may be said as being a staple industry of Australia, is now in full swing in the woollen centres of Bradford, Leeds, Halifax, Dewsbury and Galashiels.</p> <p>Some 56 officers and 200 men are engaged in learning the latest modern and scientific manipulation of classing and sorting of wool, scouring, degreasing, carbonising, carding, combing, spinning, weaving, dyeing and finishing, also grease and fat recovery.</p> <p>The latest machinery installed in the various institutions illustrate very definitely the modern ideas in the wool industry, and the experience gained by A.I.F. students is considerable. Wool of different types, from different parts of the world, is scientifically dealt with within the different mills and warehouses, while at the different Universities and Technical Colleges, experimental and research departments, as integral parts of this industry, are formed, and A.I.F. students have distinguished themselves in these branches.</p> |                                      |

WAR DIARY

or

INTELLIGENCE SUMMARY.

(Erase heading not required.)

Instructions regarding War Diaries and Intelligence Summaries are contained in F. S. Regs., Part II. and the Staff Manual respectively. Title pages will be prepared in manuscript.

Summary of Events and Information

Remarks and references to Appendices

| Place                  | Date              | Hour | Summary of Events and Information   | Remarks and references to Appendices |
|------------------------|-------------------|------|---|--------------------------------------|
| 6 Eaton Place, LONDON. | 1/5/19 to 31/5/19 |      | <p style="text-align: center;">(11)</p> <p><u>1.D.3. WOOLS &amp; TEXTILES.</u> (Continued)</p> <p>Everything in connection with the wool and textile industry is ably demonstrated by expert lecturers, at the different places of training. The students attend the London Wool sales, and every privilege is afforded them in wool classing and valuing. Lectures are delivered upon calculation counts and testing in raw wool, wool scouring and carding.</p> <p>The training is of a practical nature, the students handling the wool in bulk and every opportunity for visits is made on inspectional tours, to different mills for the purpose of giving an insight into the latest scientific methods of this industry. The wool grower attending the courses is obtaining a knowledge that he will be able to apply to advantage on his return to Australia.</p> <p>The link between the producer in Australia and the manufacturer in England and Scotland is being strongly welded. Not only are the growers learning about the most suitable wool required for the English market, but they are receiving information of primary importance, and that is how to prepare their wool for the market.</p> <p>A great number of men have passed through a training in the manufacture of textiles, and this should lead to an impetus being given to the manufacture of textile goods in Australia.</p> <p>The industry is so interesting to many that they are devoting their minds to acquiring the knowledge necessary to enable them to start new wool factories on their return to Australia.</p> <p>Many recent ideas in the manufacture of cloth are being experimented on, with satisfactory results. There appears no limit to the extent to which this industry can be carried on in Australia.</p> <p>Mill management is receiving attention, and also mill lighting. The latter idea is receiving great support in many factories, and the employees are appreciating the advantage.</p> <p>Brig. General McNICOLL, C.M.G., D.S.O., accompanied by Col. BRUCHE, C.M.G., Lt. Col. SANDAY D.S.O., M.C., Major RYAN, Capt. BIRKS, and Lt. KELLY paid a visit to Leeds and Bradford Area on the 12th and 13th of May and had a most interesting insight into the work being carried out under the wool and textile section of the Non Military Employment Education Scheme.</p> |                                      |

WAR DIARY

167  
Army Form C. 2118.

Instructions regarding War Diaries and Intelligence Summaries are contained in F. S. Regs., Part II. and the Staff Manual respectively. Title pages will be prepared in manuscript.

or  
INTELLIGENCE SUMMARY.

(Erase heading not required.)

| Place                 | Date              | Hour | Summary of Events and Information  | Remarks and references to Appendices |
|-----------------------|-------------------|------|--|--------------------------------------|
| 6 Eaton Place, London | 1:5:19 to 31:5:19 |      | <p style="text-align: center;">-:12:-</p> <p><u>1.D.3.e. MISCELLANEOUS - BUILDING TRADES.</u></p> <p><u>Miscellaneous:-</u></p> <p>During the month 388 applications were recommended, and 275 men actually placed out on non-military employment.</p> <p>Very good progress has been made in obtaining employment in the various trades and industries under this sub-section.</p> <p><u>Railways:-</u></p> <p>An arrangement has been made with the Railway Executive Committee whereby lists are submitted to them of any men who desire experience with British Railways, and on approval and advice from this Committee men are drafted out to the various Railway Companies. Under this procedure a great advancement has been made in procuring experience for all Railwaymen desiring such, and as many as 107 applications have been recommended this month. A further list of some 50 men is being submitted this week and this will include all the remaining applications for this class of experience at present held in file.</p> <p><u>Building Trades:-</u></p> <p>87 men have been recommended and 70 men actually put out on their job.</p> <p>A decided improvement has been noticeable in these trades during the past month, possibly due to the increase in the supply of material. The demand for skilled Carpenters, Cabinetmakers and Joiners has exceeded our supply and most of the work appears to be in the nature of repairs. Decorating work is in full swing and many more Painters, Paperhangers and the like <sup>can</sup> be placed when <del>are</del> available. The same difficulty as applies in other trades, in placing semi-skilled men, continues, the only openings obtainable for these being with relatives, or in small shops or businesses in districts not affected by Trade Unions.</p> |                                      |

WAR DIARY

168  
Army Form C. 2118.

Instructions regarding War Diaries and Intelligence Summaries are contained in F. S. Regs., Part II. and the Staff Manual respectively. Title pages will be prepared in manuscript.

or  
INTELLIGENCE SUMMARY.

(Erase heading not required.)

| Place                  | Date                     | Hour | Summary of Events and Information  | Remarks and references to Appendices |
|------------------------|--------------------------|------|--|--------------------------------------|
| 6 Eaton Place, London. | 1:5:19<br>to<br>31:5:19. |      | <p style="text-align: center;">-:13:-</p> <p><u>1.D.3. E. MISCELLANEOUS &amp; BUILDING TRADES:-</u></p> <p><u>Miscellaneous (Cont'd).</u></p> <p>Reports from employers on Non-Military Employment personnel generally shew them in almost every instance as giving great satisfaction, and in many cases the firm they have been employed with are anxious to retain them for a further period beyond that originally granted. It must be understood that nearly all men who have entered these trades are drawing full Union Rates.</p> <p><u>1.D.3.F. INDUSTRIAL:-</u></p> <p>During the month of May it has been necessary to open up negotiations and visit a number of districts in connection with Trade Unions . As the result of a visit to South Wales the Trade Unions in that district are favourably disposed to the placng of a number of Australians at Chepstow where it is hoped from 50 to 100 men can be immediately placed. A Trade Union Secretary points out, however, that it will be necessary to arrange for accommodation before the men are despatched, as no private lodgings can be obtained in that town, although the Government have a number of hostels, but the men complain that there is no privacy and that the general comditions of living are unsatisfactory. It should be possible fo arrange for the rental of Huts from the Admiralty with a separate arrangement for "Messing" - action has been taken in this direction.</p> <p>Complaints from three Unions regarding the placing of Australians were received and investigated. The first from the National Union of Vehicle Builders, Glasgow, stating that two Australians had taken the place of two of their members, who had been dismissed and who were still out of work. After an interview with the Secretary, matters were satisfactorily settled and the men were allowed to remain on condition that no further men for that trade should be sent to Glasgow. The second case is that in which the Amalgamated Society of Instrument makers complain that four men placed by this Department were keeping some of their man from employment, but on enquiries being made it was clearly pointed out to them that such</p> |                                      |

WAR DIARY

169  
Army Form C. 2118.

Instructions regarding War Diaries and Intelligence Summaries are contained in F. S. Regs., Part II. and the Staff Manual respectively. Title pages will be prepared in manuscript.

or  
INTELLIGENCE SUMMARY.

(Erase heading not required.)

| Place                  | Date                    | Hour | Summary of Events and Information   | Remarks and references to Appendices |
|------------------------|-------------------------|------|---|--------------------------------------|
| 6 Eaton Place, London. | 1:5:19<br>tp<br>31:5:19 |      | <p style="text-align: center;">-:14:-</p> <p><u>1.D.3.F. INDUSTRIAL (CONT'D).</u></p> <p>was not the case, as the three men in question were engaged on totally different work than that controlled by their Union. The other case in which the United Builders Labourers Union complain that unskilled men had been placed with two firms at Warminster. This complaint was made by that Union to the Secretary of State for War, on receipt of which the Industrial Officer for this section interviewed both the Unions' Secretaries and visited Warminster in order to obtain the full facts of the case.</p> <p>After his interview with the Union Secretary, in which it was set out fully the aims and conditions under which this Department placed men for non-military employment, emphasising the fact, that in no case was it desired, or had any Australian soldiers been placed in works, in districts, where there were any general unemployment in the trades in which the men were placed, the Secretary appeared to be satisfied with the way in which the scheme was being administered and carried out. It was also pointed out that with the particular firm mentioned, only three tradesmen had been placed, and if at any time it was ascertained that they were not doing tradesmen's work, but were employed as Labourers, they should be immediately withdrawn.</p> <p>As the result of this visit, however, to Warminster, it was ascertained that there were 9 Australian soldiers working for this firm who were not on N.M.E. On enquiries being made it appears that these men are married men, who have been granted indefinite leave and have started work with the sanction of their group Commander. This is how the trouble has arisen and it has been recommended by this section that definite instructions be issued, that no men on indefinite leave must be allowed to start work, except through this Department, otherwise there is no doubt, continuous trouble will occur with labor organisations, if men are working without first complying with the general working conditions as laid down.</p> |                                      |



WAR DIARY

Army Form C. 2118. <sup>170</sup>

Instructions regarding War Diaries and Intelligence Summaries are contained in F. S. Regs., Part II. and the Staff Manual respectively. Title pages will be prepared in manuscript.

or  
INTELLIGENCE SUMMARY.

(Erase heading not required.)

| Place                  | Date                    | Hour | Summary of Events and Information  | Remarks and references to Appendices |
|------------------------|-------------------------|------|--|--------------------------------------|
| 6 Eaton Place, London. | 1:5:19<br>to<br>31:5:19 |      | <p style="text-align: center;">--:15:--</p> <p>A few minor Industrial Disputes have occurred affecting personnel on N.M.E., such as a strike connected with an Engineering work at Park Royal where we had a few men working. In accordance with our principles these men were immediately withdrawn and placed in other works. Another case in which an Australian was concerned was with Vickers Limited at Barrow-in-Furness, the Trade Union objected to his employment owing to his action in connection with the dispute that had arisen between the Union and Vickers Limited - the man was withdrawn and returned to Camp as he had failed to carry out instructions, viz. no Australians may participate in Trades Disputes while engaged on N.M.E.</p> <p>Trouble also occurred in the Aircraft Manufacturing works at Hendon with the Carpenters and Joiners Union, over the question of the payment of bonus. As there was no likelihood of an early settlement to this dispute, it was advisable to withdraw our men and place elsewhere.</p> <p>As regards Trade generally there is still a great uncertainty on the part of employers, owing to the unsettled industrial conditions now prevailing in this country, demands for higher wages and reduced hours, making cost of production so high as not to justify the accumulation of stocks, towards taking our men and so increasing their staff. Under these conditions, and when it is considered that the Trade Union figures of unemployment in the United Kingdom exceed One Million, the results of this Department must be considered very satisfactory.</p> <p><u>1.D.3.G. ORDNANCE (LIAISON)</u></p> <p>The work of this sub-section has increased during this month, and as many as 6024 men having been dealt with. All men returning for Non-Military Employment now pass through this Sub-section and for this month 398 have terminated their N.M.E. making a total up to date of 537.</p> <p style="text-align: center;">-----oOo-----</p> |                                      |

337

## AMENDMENTS TO STAFF OF BRANCH I.D., REPAT. &amp; DEMOB. DEPARTMENT.

| Regtl.<br>No. | Rank.    | Name.      | Unit.  | Date taken<br>on strength<br>I.D. | Remarks. |                                       |
|---------------|----------|------------|--------|-----------------------------------|----------|---------------------------------------|
| 3218.         | Gnr.     | PETERS,    | W.H.   | 53rd Bty.                         | 23.5.19. |                                       |
| 7452.         | T/Sgt.   | BOON,      | G.E.   | 9th Bn.                           | 29.5.19. |                                       |
| 52506.        | T/Cpl.   | KNIGHT,    | W.R.   | 6th Bn.                           | 21.5.19. |                                       |
| 5333.         | Sgt.     | BAXTER,    | D.     | 14th Bn.                          | 14.5.19. | ) ) ) ) ) ) ) )<br>For duty in Areas. |
| 1023.         | Cpl.     | WATSON,    | G.     | Corps Signal Co.                  | 28.5.19. |                                       |
| 1131.         | Sgt.     | DAWSON,    | C.K.   | 10th Bn.                          | 24.3.19. |                                       |
| 2611a.        | T/C.S.M. | EVANS,     | F.O.   | 4th Pioneer Bn.                   | 25.1.19. |                                       |
| 18935.        | T/Sgt.   | CORRIGAN,  | H.K.   | 14th Fld. Coy. Eng.               | 23.5.19. |                                       |
| 3.            | S/Sgt.   | TAYLOR,    | S.G.   | 40th Bn.                          | 13.5.19. |                                       |
| 179.          | Sgt.     | DE HUGARD, | J.B.J. | 3rd Pioneer Bn.                   | 10.5.19. |                                       |

# WAR DIARY

172

OF

INDUSTRIAL EMPLOYMENT (I.D.3.)

FOR

MONTH ENDING MAY: 31ST, 1919

## LIST OF APPENDICES.

| No.       | Subject.   |
|-----------|--|
| " A "     | Statement shewing issue of tools, working clothes and overalls and civilian suits.               |
| " B " (1) | Graph shewing applications (540 forms) received, recommended, and men actually engaged in N.M.E. |
| (2)       | Statement shewing applications (540 forms) recommended.  |
| (3)       | Statement shewing applications (540 forms) of men actually engaged on N.M.E.                     |
| " C "     | Copies of Office Instructions.   |
| " D "     | Copies of weekly reports as forwarded to I.D.  |

171

APPENDIX

APPENDIX "A".

340

173

"A"  
Statement showing issue of  
tools working clothes, over-  
alls and civilian suits.

of tools, working suits,  
civilian suits.

|                                 | Total for<br>month of May. | Total up<br>to date. |
|---------------------------------|----------------------------|----------------------|
| .....                           | 638                        | 4080                 |
| .....                           | 1312                       | 5037                 |
| Tools issued:-                  |                            |                      |
| Barbers.....                    | 1                          | 24                   |
| Bootmakers.....                 | 1                          | 7                    |
| Boilermakers.....               | 1                          | 12                   |
| Bricklayers.....                | 8                          | 24                   |
| Butchers.....                   | -                          | 11                   |
| Blacksmiths.....                | 4                          | 4                    |
| Book-makers.....                | 2                          | 2                    |
| Carpenters.....                 | 41                         | 312                  |
| Compositors.....                | 3                          | 6                    |
| Dentists.....                   | -                          | 1                    |
| Draughtsmen.....                | 78                         | 149                  |
| Electrical Fitters.....         | 11                         | 100                  |
| Engineers.....                  | 13                         | 13                   |
| Engineers (Special).....        | -                          | 1                    |
| Glaziers.....                   | -                          | 10                   |
| Grainers.....                   | 1                          | 1                    |
| Ironmoulders.....               | -                          | 1                    |
| Instrument Makers.....          | -                          | 1                    |
| Linotype Operator.....          | -                          | 8                    |
| Masons.....                     | 2                          | 2                    |
| Motor body Builders.....        | -                          | 99                   |
| Motor Mechanics.....            | 46                         | 1                    |
| Modeller.....                   | 1                          | 6                    |
| Ironmoulders.....               | 5                          | 91                   |
| Painters.....                   | 7                          | 4                    |
| Poster Designers.....           | -                          | 13                   |
| Paperhangers.....               | 1                          | 4                    |
| Piano Tuners.....               | -                          | 11                   |
| Patternmakers.....              | 3                          | 6                    |
| Plasterers.....                 | 3                          | 53                   |
| Plumbers.....                   | 1                          | 4                    |
| Sadlers.....                    | 1                          | 3                    |
| Sheetmetal Workers.....         | -                          | 2                    |
| Shipwrights.....                | -                          | 10                   |
| Signwriters.....                | 1                          | 7                    |
| Slaters.....                    | -                          | 1                    |
| Surgical Instrument Makers..... | -                          | 1                    |
| Sailor's Kit.....               | 1                          | 2                    |
| Sheep Shearers                  |                            |                      |
| Modeller.....                   | 2                          | 1                    |
| Nautical Instruments.....       | 1                          | 1                    |
| Photographers.....              | 1                          | 1                    |
| Bicycle.....                    | 1                          | 24                   |
| Tailor's Cutters.....           | 9                          | 16                   |
| Tailors.....                    | 3                          | 1                    |
| Leather Trunk Makers.....       | -                          | 2                    |
| Telephone Mechanics.....        | -                          | 226                  |
| Turners & Fitters.....          | 20                         | 2                    |
| Upholsterers.....               | 1                          | 3                    |
| Wagon Builders.....             | -                          | 3                    |
| Wire Workers.....               | -                          | 11                   |
| Woodworkers.....                | 10                         | 10                   |
| Watchmakers.....                | 1                          |                      |

" A P P E N D I X " " A " .

340  
173

Statement shewing issues of tools, working suits,  
overalls and civilian suits.

|                                       | <u>Total for</u><br><u>month of May.</u> | <u>Total up</u><br><u>to date.</u> |
|---------------------------------------|--|------------------------------------|
| Men issued with Civilian Clothes..... | 638                                      | 4080                               |
| Men issued with Overalls.....         | 1312                                     | 5037                               |
| Tools issued:-                        |  |                                    |
| Barbers.....                          | 1  | 24                                 |
| Bootmakers.....                       | 1  | 7                                  |
| Boilermakers.....                     | 1  | 12                                 |
| Bricklayers.....                      | 8  | 24                                 |
| Butchers.....                         | -  | 11                                 |
| Blacksmiths.....                      | 4  | 4                                  |
| Book-makers.....                      | 2  | 2                                  |
| Carpenters.....                       | 41                                       | 312                                |
| Compositors.....                      | 3  | 6                                  |
| Dentists.....                         | -  | 1                                  |
| Draughtemen.....                      | 78                                       | 149                                |
| Electrical Fitters.....               | 11                                       | 100                                |
| Engineers.....                        | 13                                       | 13                                 |
| Engineers (Special) .....             | -  | 1                                  |
| Glaziers.....                         | -  | 10                                 |
| Grainers.....                         | 1  | 1                                  |
| Ironmoulders.....                     | -  | 1                                  |
| Instrument Makers.....                | -  | 1                                  |
| Linotype Operator.....                | -  | 1                                  |
| Masons.....                           | 2  | 8                                  |
| Motor body Builders.....              | -  | 2                                  |
| Motor Mechanics.....                  | 46                                       | 99                                 |
| Modeller.....                         | 1  | 1                                  |
| Ironmoulders.....                     | 5  | 6                                  |
| Painters.....                         | 7  | 91                                 |
| Poster Designers.....                 | -  | 4                                  |
| Paperhangers.....                     | 1  | 13                                 |
| Piano Tuners.....                     | -  | 4                                  |
| Patternmakers.....                    | 3  | 11                                 |
| Plasterers.....                       | 3  | 6                                  |
| Plumbers.....                         | 1  | 53                                 |
| Sadlers.....                          | 1  | 4                                  |
| Sheetmetal Workers.....               | -  | 3                                  |
| Shipwrights.....                      | -  | 2                                  |
| Signwriters.....                      | 1  | 10                                 |
| Slaters.....                          | -  | 7                                  |
| Surgical Instrument Makers.....       | -  | 1                                  |
| Sailor's Kit.....                     | 1  | 1                                  |
| Sheep Shearers                        | 2  | 2                                  |
| Modeller.....                         | 1  | 1                                  |
| Nautical Instruments.....             | 1  | 1                                  |
| Photographers.....                    | 1  | 1                                  |
| Bicycle.....                          | 1  | 1                                  |
| Tailor's Cutters.....                 | 9  | 24                                 |
| Tailors.....                          | 3  | 16                                 |
| Leather Trunk Makers.....             | -  | 1                                  |
| Telephone Mechanics.....              | -  | 2                                  |
| Turners & Fitters.....                | 20                                       | 226                                |
| Upholsterers.....                     | 1  | 2                                  |
| Wagon Builders.....                   | -  | 3                                  |
| Wire Workers.....                     | -  | 3                                  |
| Woodworkers.....                      | 10                                       | 11                                 |
| Watchmakers.....                      | 1  | 10                                 |

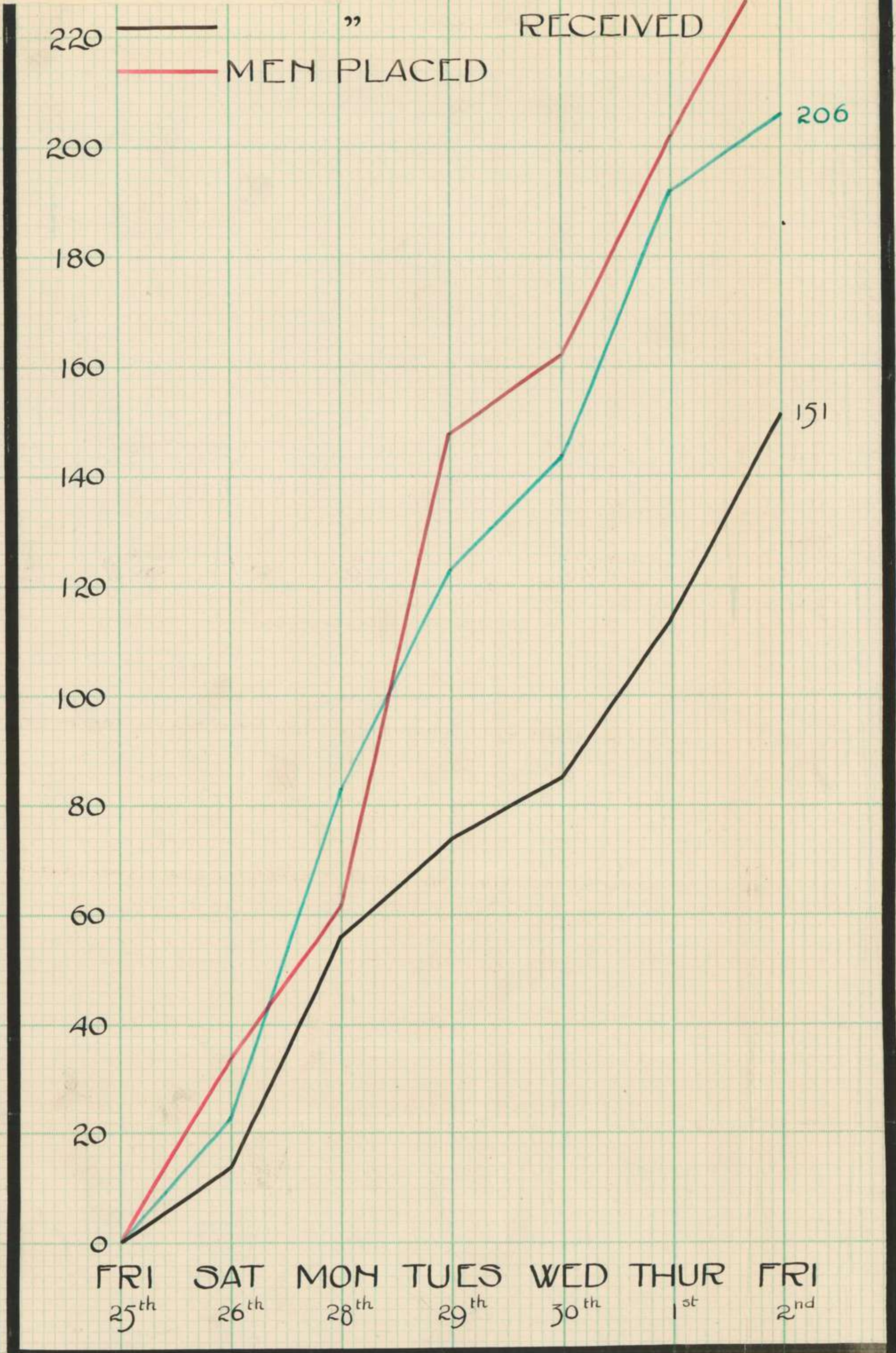
2<sup>ND</sup> MAY 1919.

341  
174

Graph showing application (540 form) received, recommended and men actually engaged in N.M.E.

# PH SHOWING

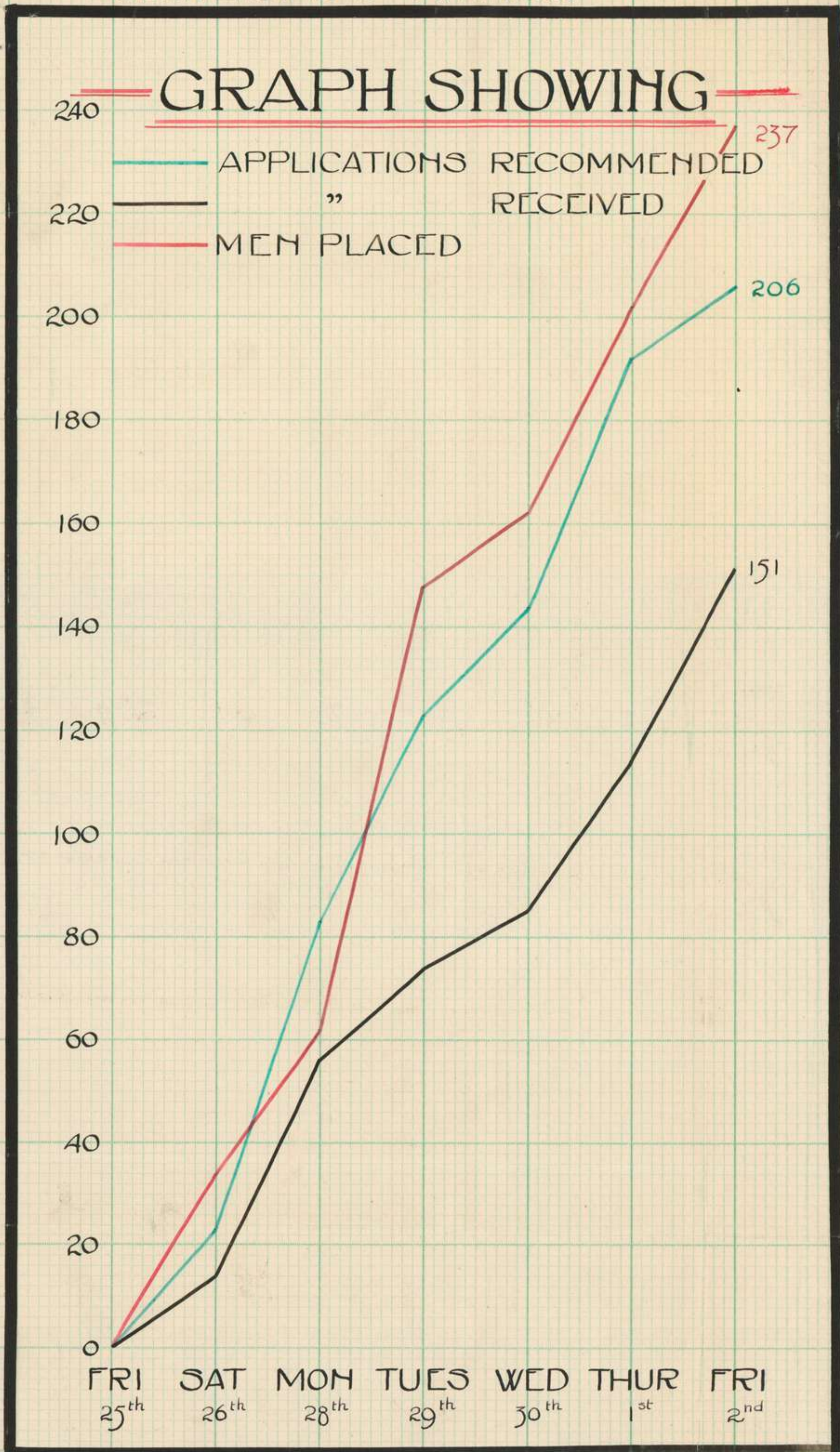
CATIONS RECOMMENDED  
" RECEIVED



Sgt. G. A. Marlín.

341  
174

WEEK ENDING 2<sup>ND</sup> MAY 1919.



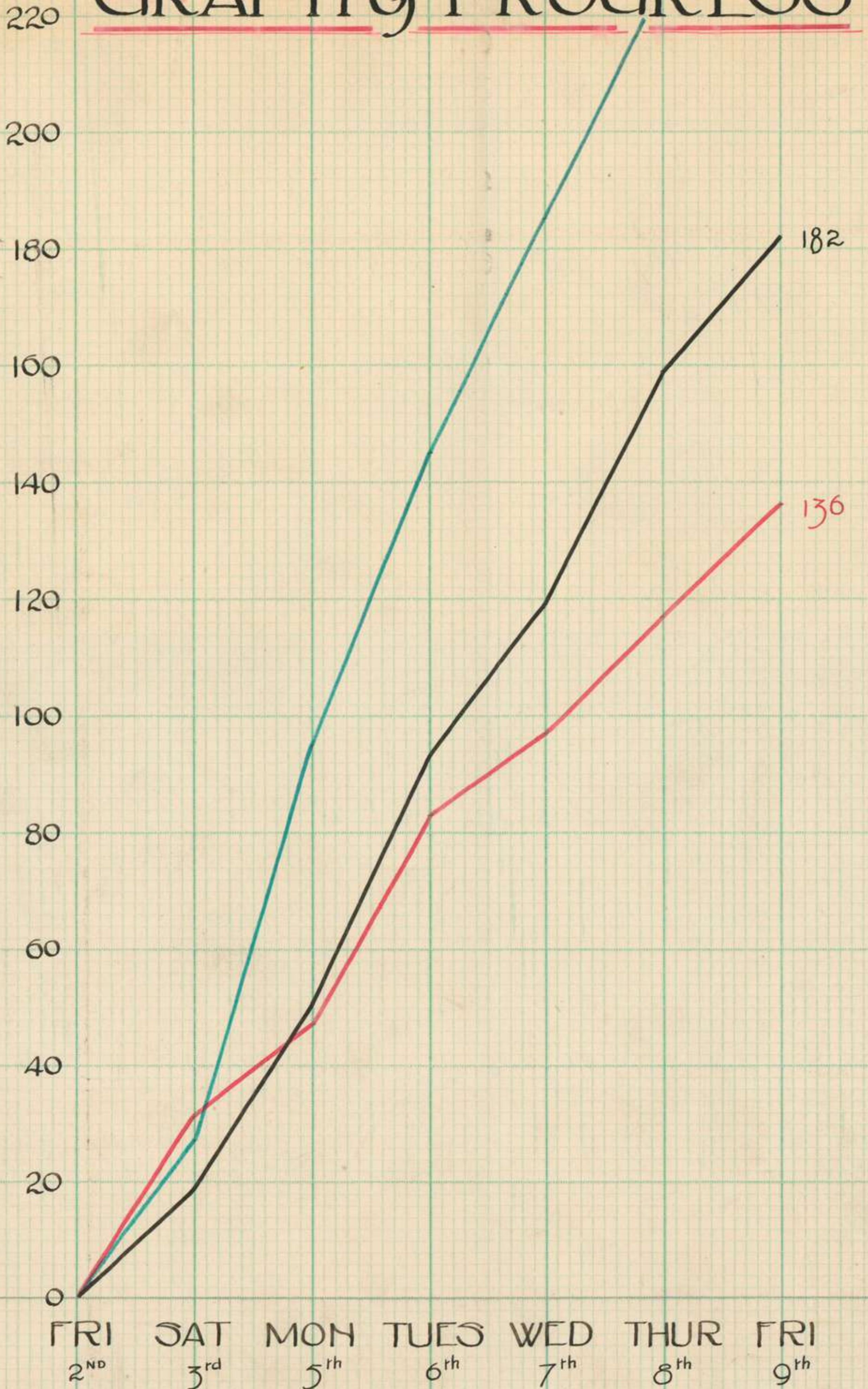
Sgt. G. A. Martin.

WEEK ENDING 9 MAY 1919.

175  
3.42

— APPLICATIONS RECOMMENDED  
— " " RECEIVED  
— MEN PLACED

# GRAPH of PROGRESS

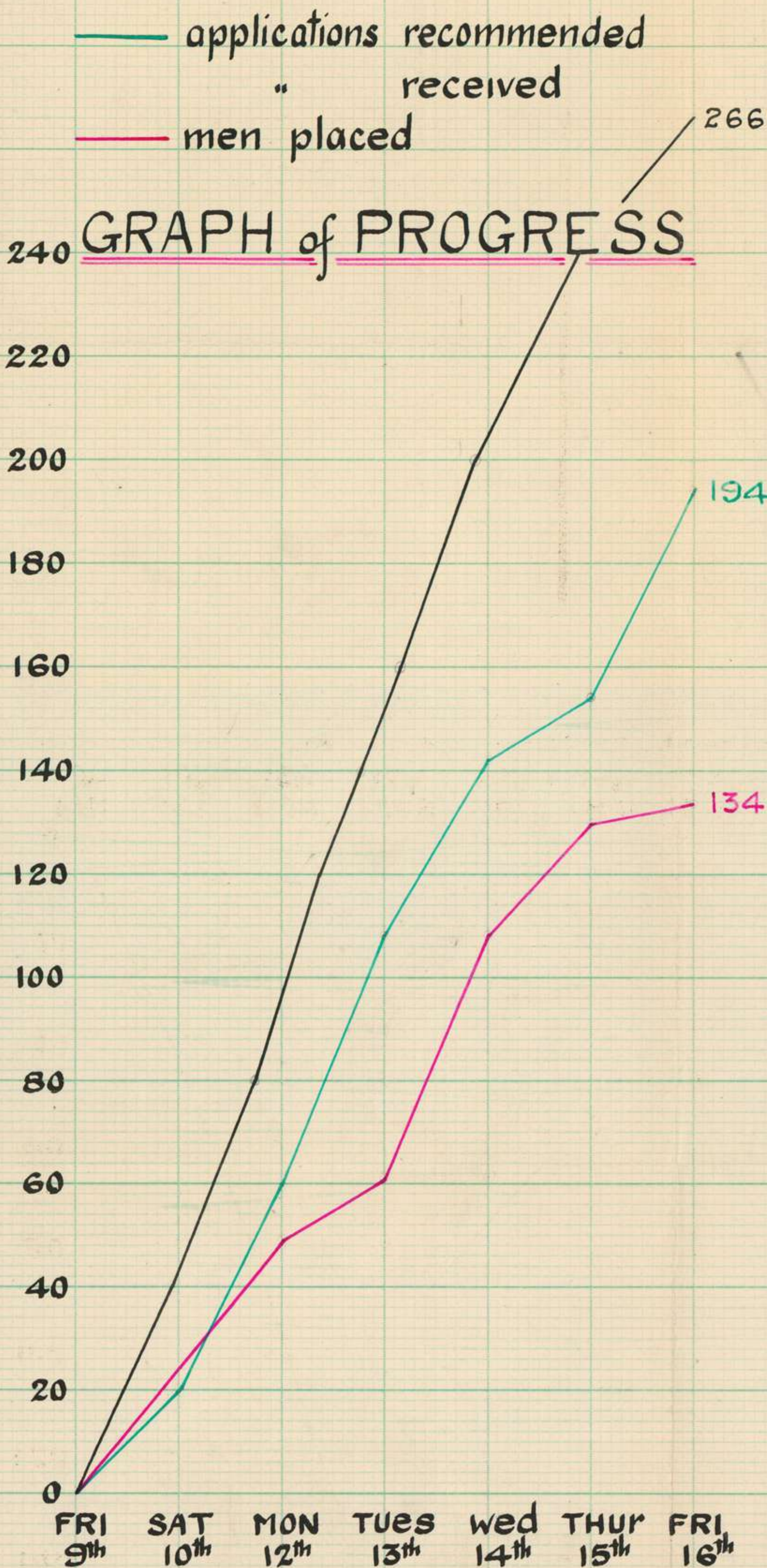


Sgt G. A. Martin



week ending 16<sup>th</sup> May 1919.

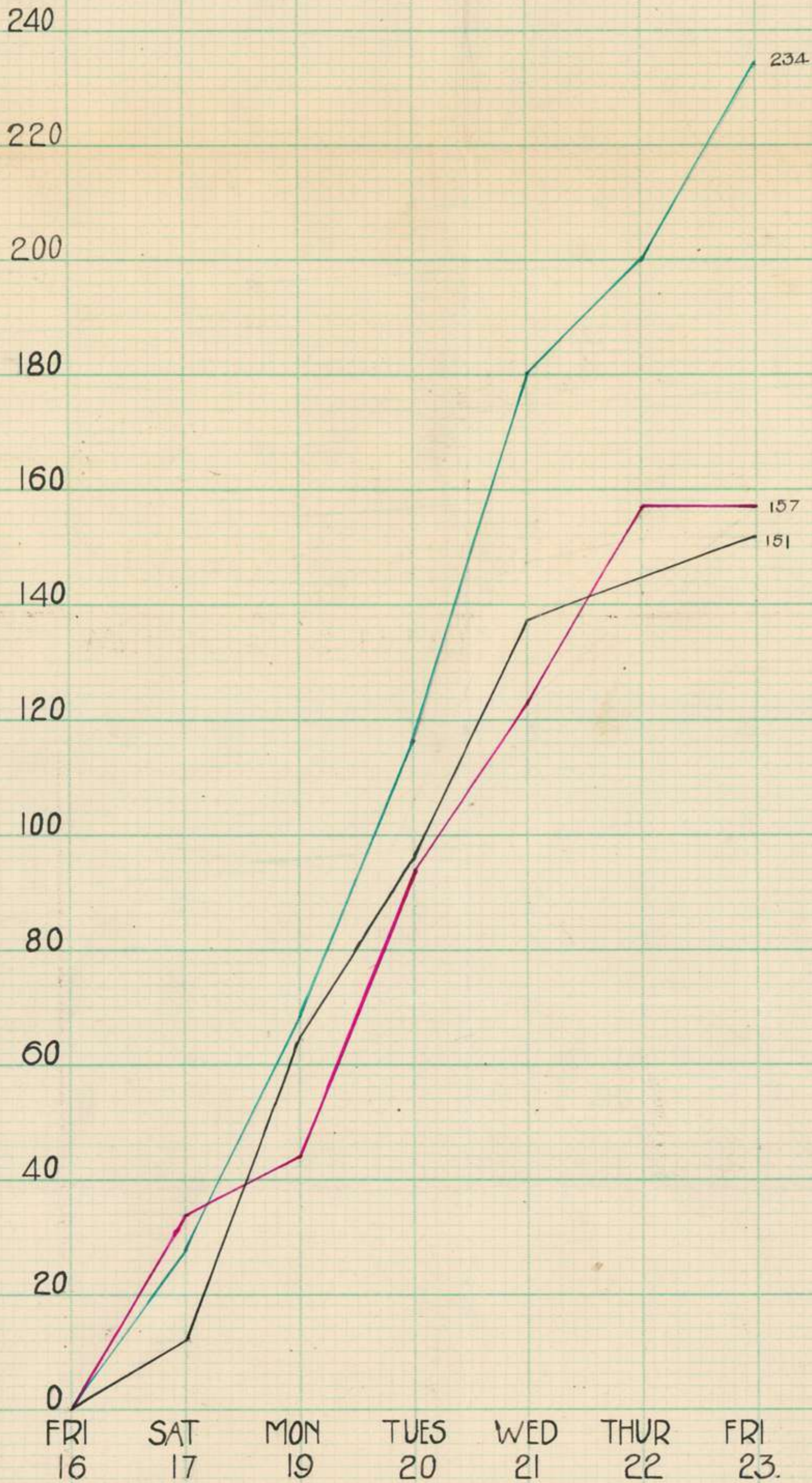
176  
342A



WEEK ENDING 24<sup>th</sup> MAY 1919

# GRAPH SHOWING

— APPLICATIONS RECOMMENDED  
— " " RECEIVED  
— MEN PLACED

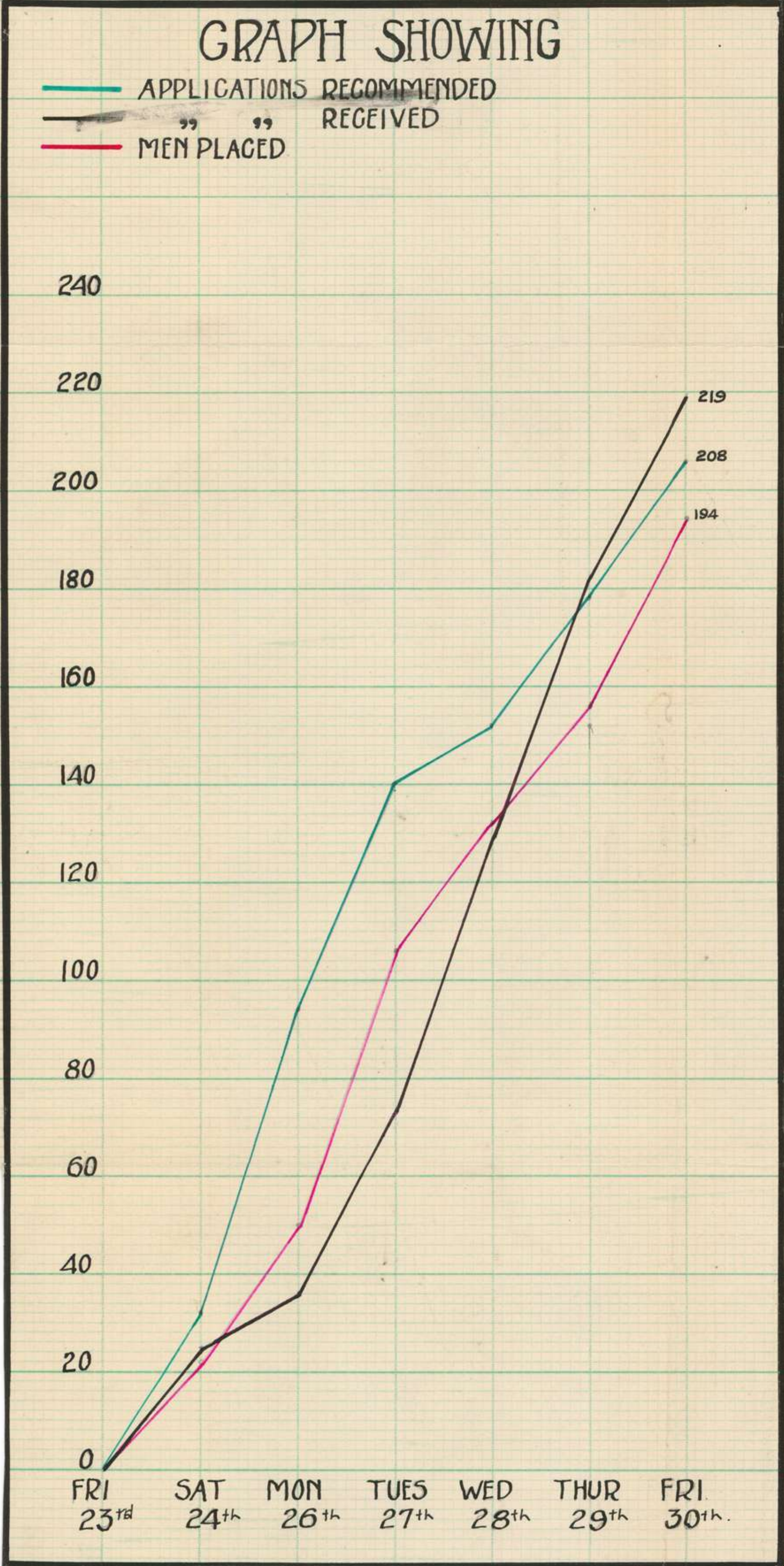


WEEK ENDING 31<sup>st</sup> MAY 1919

344  
178

# GRAPH SHOWING

— APPLICATIONS RECOMMENDED  
— " " RECEIVED  
— MEN PLACED



H.C.A.L.

RETURN OF MEN RECOMMENDED FOR NON-MILITARY EMPLOYMENT  
(INDUSTRIAL EMPLOYMENT) FOR WEEK ENDING 3rd MAY, 1919.

| 1.D.<br>3.a. | 1.D.<br>3.b.        | 1.D.3.c. | 1.D.<br>3.d. | (Building Trades & Miscellaneous)<br>1.D.3.e. |                 |                 |                             |          |  |                                       |                             |                              |                 |                  |                               |                                       |                      |             |               | TOTALS        |     |   |      |
|--------------|---------------------|----------|--------------|---|-----------------|-----------------|-----------------------------|----------|--|---------------------------------------|-----------------------------|------------------------------|-----------------|------------------|-------------------------------|---------------------------------------|----------------------|-------------|---------------|---------------|-----|---|------|
| 1            | 2                   | 3        | 3a           | 3b  | 4               | 5               | 5a                          | 6        | 6a                                     | 6b                                    | 6c                          | 6d                           | 6e              | 6f               | 6g                            | 6h                                    | 6k                   | 6l          | 6m            | 6n            |     |   |      |
| Shipbuilding | General Engineering | Motor    | Aeroplane    | Electric                                      | Wool & Textiles | Building Trades | Miscellaneous not specified | Butchers | Bakery, Confectionery,<br>Pastrycooks. | Insurance, Banking, Legal<br>Commerce | Bootmakers & Leatherworkers | Tailors, Cutters, Costumiers | Railway Workers | Tobacco business | Cinema, State, Singing, Music | Grocers, Greengrocers,<br>Provisions. | Linotype & Printing. | Watchmakers | Cabinetmakers | Flour Millers |     |   |      |
| 16           | 37                  | 41       | 2            | 8   | -               | 19              | 18                          | 2        | 1                                      | 20                                    | 12                          | 1                            | 13              | -                | 3                             | 7                                     | 4                    | 1           | 1             | -             | 206 |   |      |
|              |                     |          |              |   |                 |                 |                             |          |  |                                       |                             |                              |                 |                  |                               |                                       |                      |             |               |               |     | Progressive total shown<br>last week's return | 3678 |
|              |                     |          |              |   |                 |                 |                             |          |  |                                       |                             |                              |                 |                  |                               |                                       |                      |             |               |               |     | Progressive total                             | 3884 |



RETURN OF MEN RECOMMENDED FOR NON-MILITARY EMPLOYMENT  
(INDUSTRIAL SECTION) FOR WEEK ENDING 17.5.19

| 1.D.<br>3.a. | 1.D.<br>3.b.         | 1.D.3.c. |           |          | 1.D.<br>3.d.    | 1.D.3.e.<br>(Building Trades & Miscellaneous) |                                       |          |                                      |                                       |                             |                               |                 |                  |                               |                                  |                     |             |                |               | TOTALS |      |
|--------------|----------------------|----------|-----------|----------|-----------------|---|---------------------------------------|----------|--------------------------------------|---------------------------------------|-----------------------------|-------------------------------|-----------------|------------------|-------------------------------|----------------------------------|---------------------|-------------|----------------|---------------|--------|------|
| 1            | 2                    | 3        | 3a        | 3b       | 4               | 5   | 5a                                    | 6        | 6a                                   | 6b                                    | 6c                          | 6d                            | 6e              | 6f               | 6g                            | 6h                               | 6k                  | 6L          | 6m             | 6n            |        |      |
| Shipbuilding | General Engineering. | Motor    | Aeroplane | Electric | Wool & Textiles | Building Trades                               | Miscellaneous not otherwise specified | Butchers | Bakery, Confectionery & pastrycooks. | Insurance, Banking, Legal & Commerce. | Bootmakers & Leatherworkers | Tailors, Cutters & Costumiers | Railway Workers | Tobacco business | Cinema, Stage, Singing, Music | Grocers, Greengrocers Provisions | Linotype & Printing | Watchmakers | Cabinet Makers | Flour Millers |        |      |
| 8            | 31                   | 41       | 4         | 6        |                 | 29  | 37                                    |          | 2                                    | 13                                    | 11                          | 1                             | 3               | 1                | 2                             | 1                                | 2                   |             | 2              |               | 194    |      |
|              |                      |          |           |          |                 |   |                                       |          |                                      |                                       |                             |                               |                 |                  |                               |                                  |                     |             |                |               |        | 4118 |
|              |                      |          |           |          |                 |   |                                       |          |                                      |                                       |                             |                               |                 |                  |                               |                                  |                     |             |                |               |        | 4312 |
|              |                      |          |           |          |                 |   |                                       |          |                                      |                                       |                             |                               |                 |                  |                               |                                  |                     |             |                |               |        |      |

RETURN OF MEN RECOMMENDED FOR NON-MILITARY EMPLOYMENT  
(INDUSTRIAL SECTION) FOR WEEK-ENDING 24:5:1919.

| 1.D.<br>3.A. | 1.D.<br>3.B.      | 1.D.3.C. |            | 1.D.<br>3.D. | 1.D.3.E.<br>(Building Trades and Miscellaneous) |                 |                                       |          |               |               |                             |                              |                             |  |                   |                            |                                      |                      |              | TOTALS.        |   |      |  |  |     |
|--------------|-------------------|----------|------------|--------------|---|-----------------|---------------------------------------|----------|---------------|---------------|-----------------------------|------------------------------|-----------------------------|--|-------------------|----------------------------|--------------------------------------|----------------------|--------------|----------------|---|------|--|--|-----|
| SHIPBUILDING | GENERAL ENGINEERS | MOTOR    | AEROPLANES | ELECTRIC     | WOOL & TEXTILES                                 | BUILDING TRADES | MISCELLANEOUS NOT OTHERWISE SPECIFIED | BUTCHERS | BAKERY CONFY. | PASTRY COOKS. | INS. BANKING LEGAL COMMERCE | BOOTMAKERS & LEATHERWORKERS. | TAILORS CUTTERS COSTUMIERS. | <del>XXXXXXXXXXXX</del><br>RAILWAY WORKERS | TOBACCO BUSINESS. | CINEMA STAGE?SINGING MUSIC | GROCCERS, GREEN GROCCERS PROVISIONS. | LINOTYPE & PRINTING. | WATCHMAKERS. | CABINETMAKERS. | FLOURMILLERS.                             |      |  |  |     |
| 1            | 2                 | 3        | 3a         | 3b           | 4   | 5               | 5a                                    | 6        | 6a            | 6b            | 6c                          | 6d                           | 6E                          | 6Fe  | 6G                | 6H                         | 6K                                   | 6L                   | 6M           | 6N             |   |      |  |  |     |
| 9            | 62                | 42       | 2          | 19           | 1   | 22              | 19                                    | 2        | 6             | 18            | 5                           | 1                            | 16                          |  |                   | 2                          | 4                                    | 2                    | 1            | 1              |   |      |  |  | 234 |
|              |                   |          |            |              |   |                 |                                       |          |               |               |                             |                              |                             |  |                   |                            |                                      |                      |              |                | PROGRESSIVE TOTAL SHEWN LAST WEEKS RETURN | 4312 |  |  |     |
|              |                   |          |            |              |   |                 |                                       |          |               |               |                             |                              |                             |  |                   |                            |                                      |                      |              |                | PROGRESSIVE TOTAL.                        | 4546 |  |  |     |

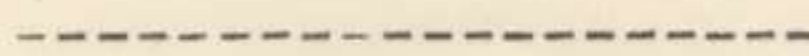
348

188





The following are some of the trades in which men are placed  
which are included in "TRADES NOT OTHERWISE SPECIFIED". 350



- |                         |                                      |
|-------------------------|--------------------------------------|
| Toy Manufacturers       | Lime Burning                         |
| Blind Manufacturers     | Umbrella Manufacturers               |
| Compass Adjusting       | Dentistry                            |
| Pottery Manufacturing   | Hat Manufacturing                    |
| French Polishing        | Weighing Machine Manufactur-<br>ers. |
| Tile Manufacturers.     | Typewriting Ribbon<br>Manufacturers. |
| Lace Manufacturing      | Chropodist & Massage                 |
| Picture Framing         | Wire Weaving.                        |
| Sign Writing            | Fruit Industry.                      |
| Shop Fitting            | Piano Construction.                  |
| Method of Refrigerating | Glass Blowing.                       |
| Tea Expert              | Dye Manufacturing                    |
| Hairdressing            | Chemistry                            |
| Fur Trade               | Musical Instrument<br>Manufacturing. |
| Seamen                  | Surveying                            |
| Etc. Etc.               | Etc. Etc.                            |

RETURN OF MEN ACTUALLY PLACED FOR NON MILITARY EMPLOYMENT

FOR WEEK ENDING MAY 3RD 1919.

| 1.D.         | 1.D.<br>3.b.        | 1.D.3.c. | 1.D.<br>3.d. | 1. D. 3. e. |                 |                 |                             |          |                                     |                                      |                             |                              |                 |                  |                                |                                    |                      |              |                |   | TOTALS. |
|--------------|---------------------|----------|--------------|-------------|-----------------|-----------------|-----------------------------|----------|-------------------------------------|--------------------------------------|-----------------------------|------------------------------|-----------------|------------------|--------------------------------|------------------------------------|----------------------|--------------|----------------|---|---------|
| 1            | 2                   | 3        | 3a           | 3b          | 4               | 5               | 5a                          | 6        | 6a                                  | 6b                                   | 6c                          | 6d                           | 6e              | 6f               | 6g                             | 6h                                 | 6k                   | 6l           | 6m             | 6n  |         |
| Shipbuilding | General Engineering | Motor    | Aeroplane    | Electric    | Wool & Textiles | Building Trades | Miscellaneous not specified | Butchers | Bakery, Confectionery, Pastrycooks. | Insurance, Banking, Legal, Commerce, | Bootmakers, Leatherworkers, | Tailors, Cutters, Costumiers | Railway Workers | Tobacco business | Cinema, Stage, Singing, Music. | Grocers, Greengrocers, Provisions. | Linotype & Printing. | Watchmakers, | Cabinetmakers. | Flour Millers.                                |         |
| 12           | 26                  | 56       | 6            | 16          | 5               | 21              | 31                          | 1        | 5                                   | 22                                   | 8                           | 3                            | 3               |                  | 4                              | 6                                  | 4                    | 4            | 2              | 2   |         |
|              |                     |          |              |             |                 |                 |                             |          |                                     |                                      |                             |                              |                 |                  |                                |                                    |                      |              |                | Progressive total shewn in last week's return | 2458    |
|              |                     |          |              |             |                 |                 |                             |          |                                     |                                      |                             |                              |                 |                  |                                |                                    |                      |              |                | Progressive Total.                            | 2695    |

351

185

RETURN OF MEN ACTUALLY PLACED IN NON-MILITARY  
EMPLOYMENT FOR WEEK ENDING 10TH MAY:1919.

| 1.D.<br>3.A.  | 1.D.<br>3.B.         | 1.D.3.C. |            |           | 1.D.<br>3.D.     | 1.D.3.E.         |  |           |                             |                                   |                            |                               |                  |                   |                             |                                 |  |              |               |                |      |
|---------------|----------------------|----------|------------|-----------|------------------|------------------|--|-----------|-----------------------------|-----------------------------------|----------------------------|-------------------------------|------------------|-------------------|-----------------------------|---------------------------------|--|--------------|---------------|----------------|------|
| Shipbuilding. | General Engineering. | Motor.   | Aeroplane. | Electric. | Wool & Textiles. | Building Trades. | Miscellaneous not otherwise specified. | Butchers. | Bakery Confectionery Pastry | Insurance Banking Legal Commerce. | Bootmakers, Leatherworkers | Tailors, Cutters, Costumiers. | Railway Workers. | Tobacco Business. | Cinema Stage Singing Music. | Grocers Greengrocers Provisions | Linotype and Printing.                         | Watchmakers. | Cabinetmaker. | Flour Millers. |      |
| 1.            | 2                    | 3        | 3a         | 3b        | 4                | 5                | 5a                                     | 6         | 6a                          | 6b                                | 6c                         | 6d                            | 6e               | 6f                | 6g                          | 6h                              | 6k   | 6L           | 6m            | 6n.            |      |
| 13            | 28                   | 27       | 6          | 5         | 1                | 11               | 12                                     | 2         | 2                           | 13                                | 4                          | 3                             | 4                |                   |                             |                                 | 4  |              | 1             |                | 136  |
|               |                      |          |            |           |                  |                  |  |           |                             |                                   |                            |                               |                  |                   |                             |                                 | Progressive total shewn in last week's return. |              |               |                | 2695 |
|               |                      |          |            |           |                  |                  |  |           |                             |                                   |                            |                               |                  |                   |                             |                                 | Progressive total.                             |              |               |                | 2831 |

352

186

RETURN OF MEN ACTUALLY PLACED ON NON-MILITARY EMPLOYMENT  
(INDUSTRIAL SECTION) FOR WEEK ENDING 17. 5.19

| 1.D.<br>3.a. | 1.D.<br>3.b.        | 1.D.3.c. |           |          | 1.D.<br>3.d.    | 1.D.3.e.<br>(Building Trades & Miscellaneous) |  |          |   |   |                                   |                                  |                  |                   |                                   |  |                      |              |                |  |        |
|--------------|---------------------|----------|-----------|----------|-----------------|---|--|----------|---|---|-----------------------------------|----------------------------------|------------------|-------------------|-----------------------------------|--|----------------------|--------------|----------------|--|--------|
| Shipbuilding | General Engineering | Motor    | Aeroplane | Electric | Wool & Textiles | Building Trades                               | Miscellaneous, not other-<br>wise specified. | Butchers | Bake ry, Confectionery, &<br>Pastrycooks. | Insurance, Banking, Legal,<br>Commerce. | Bootmakers & Leather-<br>workers. | Tailors, Cutters,<br>Costumiers. | Railway Workers. | Tobacco Business. | Cinema, Stage, Singing,<br>Music. | Gr ocers, Greengrocers,<br>Provisions. | Linotype & Printing. | Watchmakers. | Cabinetmakers. | Flour Millers.                               | Totals |
| 1            | 2                   | 3        | 3a        | 3b       | 4               | 5   | 5a   | 6        | 6a  | 6b                                      | 6c                                | 6d                               | 6e               | 6f                | 6g                                | 6h                                     | 6k                   | 6l           | 6m             | 6n   | Totals |
| 5            | 22                  | 27       | 1         | 6        | -               | 14  | 16   | 1        | 3   | 16                                      | 5                                 | 2                                | 4                | -                 | 3                                 | 4                                      | 2                    | -            | 3              |  | 134    |
|              |                     |          |           |          |                 |   |  |          |   |   |                                   |                                  |                  |                   |                                   |  |                      |              |                | Progressive total shown last week's return:- | 2831   |
|              |                     |          |           |          |                 |   |  |          |   |   |                                   |                                  |                  |                   |                                   |  |                      |              |                | Progressive total:-                          | 2965   |

353

187

RETURN OF MEN PLACED IN NON-MILITARY EMPLOYMENT (INDUSTRIAL SECTION)  
FOR THE WEEK ENDING 24.5.19

| 1.D.<br>3.a. | 1.D.<br>3.b. | 1.D.3.c. |           |          | 1.D.<br>3.d.    | 1.D.3.e.<br>(Building Trades & Miscellaneous.) |  |           |   |                                      |                              |                               |                  |                   |                                |                                    |                      |              |                 |                | Totals. |     |
|--------------|--------------|----------|-----------|----------|-----------------|--|--|-----------|---|--------------------------------------|------------------------------|-------------------------------|------------------|-------------------|--------------------------------|------------------------------------|----------------------|--------------|-----------------|----------------|---------|-----|
|              |              | Motor    | Aeroplane | Electric | Wool & Textiles | Building Trades                                | Miscellaneous not otherwise specified. | Butchers. | Bakery, Confectionery, and Pastrycooks. | Insurance, Banking, Legal, Commerce. | Bootmakers & Leatherworkers. | Tailors, Cutters, Costumiers. | Railway Workers. | Tobacco Business. | Cinema, Stage, Singing, Music. | Grocers, Greengrocers, Provisions. | Linotype & Printing. | Watchmakers. | Cabinet Makers. | Flour Millers. |         |     |
| 1            | 2            | 3        | 3a        | 3b       | 4               | 5  | 5a                                     | 6         | 6a                                      | 6b                                   | 6c                           | 6d                            | 6e               | 6f                | 6g                             | 6h                                 | 6k                   | 6l           | 6m              | 6n             |         |     |
| 4            | 25           | 39       | 3         | 9        | 1               | 23   | 26                                     | -         | 1                                       | 12                                   | 4                            | -                             | 4                | 1                 | 1                              | 1                                  | 2                    | 1            | 1               | -              |         | 157 |

Progressive total shown in last week's return:- 2965  
 Progressive total:- 3122

354  
 821

RETURN OF MEN ACTUALLY PLACED ON NON-MILITARY EMPLOYMENT  
(INDUSTRIAL SECTION) FOR WEEK ENDING 31.5.19.

| 1.D.3.<br>a. | 1.D.<br>3.b.        | 1.D.3.c. |           |          | 1.D.<br>3.a.    | 1. d. 3. e.<br>(Building Trades & Miscellaneous) |  |          |  |                                       |                                  |                                  |                  |                  |                                   |                                      |                      |              |  |                |       |
|--------------|---------------------|----------|-----------|----------|-----------------|--|--|----------|--|---------------------------------------|----------------------------------|----------------------------------|------------------|------------------|-----------------------------------|--------------------------------------|----------------------|--------------|--|----------------|-------|
| Shipbuilding | General Engineering | Motor    | Aeroplane | Electric | Wool & Textiles | Building Trades                                  | Miscellaneous not other-<br>wise specified | Butchers | Bakery, Confectionery,<br>Pastrycooks. | Insurance, Banking, Legal<br>Commerce | Bootmakers & Leather-<br>workers | Tailors, Cutters,<br>Costumiers. | Railway Workers. | Tobacco business | Cinema, Stage, Singing,<br>Music. | Grocers, Greengrocers,<br>Provisions | Linotype & Printing. | Watchmakers. | Cabinetmakers.                             | Flour Millers. | Total |
| 1            | 2                   | 3        | 3a        | 3b       | 4               | 5  | 5a   | 6        | 6a                                     | 6b                                    | 6c                               | 6d                               | 6e               | 6g               | 6g                                | 6h                                   | 6k                   | 6l           | 6m   | 6n             | Total |
| 9            | 29                  | 44       | 6         | 12       | -               | 14   | 28   | -        | -                                      | 18                                    | 5                                | 5                                | 17               | -                | 1                                 | 2                                    | 3                    | 1            | -  | -              | 194   |
|              |                     |          |           |          |                 |  |  |          |  |                                       |                                  |                                  |                  |                  |                                   |                                      |                      |              | Progressive total shown last week's return | 3122           |       |
|              |                     |          |           |          |                 |  |  |          |  |                                       |                                  |                                  |                  |                  |                                   |                                      |                      |              | Progressive total:                         | 3316           |       |

355

209

OFFICE INSTRUCTION

190  
356  
May 1st 1919.

FEEES - RECOMMENDATION OF

The following is the procedure to be adopted regarding payment of fees:-

- (a) In general, fees are recommended for other ranks, but in each case, an indication is as far as possible obtained, as to what each man's capacity for payment of fees is.
- (b) In each case, unless special circumstances are advanced, a portion of the fees are left for the man to pay.
- (c) In considering what proportion of fees to recommend the attendant expenses of books, instruments and other apparatus are taken into account.
- (d) For privates, about three-quarters fees are recommended. For Corporals and Sgts. about two-thirds are recommended. For W.O's half fees are recommended. In each case rather more than the fraction stated.
- (e) In some cases smaller proportion of fees than the above are recommended, because the course is unusually more cultural than utilitarian.

(signed) H. W. Henningham  
For Lieut. Col.  
O.C. INDUSTRIAL EMPLOYMENT.

Distribution:-

|             |    |
|-------------|----|
| O.C.        | 1  |
| 1.D.3.a.    | 1  |
| 1.D.3.b.    | 1  |
| 1.D.3.c.    | 2  |
| 1.D.3.e.    | 3  |
| Lt. Carroll | 1. |

OFFICE INSTRUCTION.

191

357

May 1st, 1919

In the event of a man making application for Non-Military Employment other than in the United Kingdom such application is to be treated as a special case.

If the application is recommended to 5.D. it must be accompanied by a special recommendation, and also it must be marked in some way, so that it would not be passed through as an ordinary case.

Signed H. W. Henningham Lt.  
For Lieut. Col.  
O.C. INDUSTRIAL EMPLOYMENT.

Distribution:

|             |    |
|-------------|----|
| O.C.        | 1  |
| 1.D.3.a.    | 1  |
| 1.D.3.b.    | 1  |
| 1.D.3.c.    | 2  |
| 1.D.3.e.    | 3  |
| Lt. Carroll | 1. |



OFFICE INSTRUCTION.

192

May 16th 1919.

358

EXTENSION OF NON-MILITARY EMPLOYMENT FOR A.A.M.C. PERSONNEL.

No extension of Non-Military Employment is to be granted for A.A.M.C. personnel unless authorised by the D.M.S.

Signed H. W. Henningham Lt.  
For Lieut. Col.  
O.C. INDUSTRIAL EMPLOYMENT.

Distribution:-

|             |    |
|-------------|----|
| O.C.        | 1  |
| 1.D.3.a.    | 1  |
| 1.D.3.b.    | 1  |
| 1.D.3.c.    | 2  |
| 1.D.3.e.    | 3  |
| Lt. Carroll | 1. |

OFFICE INSTRUCTION

193

359

May 16th 1919.

When a 540 is required from l.D.l. application must be made for same through Lieut. Carroll, stating the reason for which the 540 form is required.

(signed) H. W. Henningham Lt.  
For Lieut. Col.  
O.C. INDUSTRIAL EMPLOYMENT.

Distribution:-

- O.C. 1
- l.D.3.a. 1
- l.D.3.b. 1
- l.D.3.c. 2
- l.D.3.e. 3
- Lt. Carroll 1

May 10th 1919

360

Owing to industrial trouble in Glasgow no men are to be sent to that area for Coachbuilding trades until further notice.

(signed) H. W. Henningham Lt.  
O.C. INDUSTRIAL EMPLOYMENT.

## Distribution:-

|              |   |
|--------------|---|
| O.C.         | 1 |
| 1.D.3.a.     | 1 |
| 1.D.3.b.     | 1 |
| 1.D.3.c.     | 2 |
| 1.D.3.e.     | 3 |
| Lt. Carroll. | 1 |
| 1.D.3.f.     | 1 |

195

May 19th 1919.

SUBSISTENCE & TRAVELLING ALLOWANCES.

361

The following is the procedure to be adopted by officers when submitting claims for travelling allowances:-

1. When travelling on duty the 10/- per day subsistence allowance is stopped from the subsistence roll and an additional 6/- per day is allowed. For this purpose a day is any period in excess of 12 hours, so if an officer leaves London before 12 noon on one day and arrives back after 12 noon the following day, the 10/- per day subsistence is stopped for two whole days and he can claim 3/- per day for the same period.
2. If he leaves and arrives on the same day his 10/- subsistence is allowed and he also gets meal allowance.
3. If he is absent for one complete day only, e.g. (9 a.m. Monday to 9 a.m. Tuesday) he is allowed 12/6 travelling allowance and 10/- subsistence.
4. Subsistence allowance is only payable for full days, as per para (1), but travelling allowance is payable at the rate of 12/6 for 24 hours when the period of absence is in excess of 24 hours.
5. The 3/- per day must be included in the travelling allowance forms.

6. EXAMPLES ARE AS FOLLOWS:-

A. An officer leaves London 9 a.m. on Monday and arrives London 3 p.m. Wednesday

3 days subsistence at 10/- per day is stopped.

He Claims:-

|                                |  |                     |  |  |
|--------------------------------|--|---------------------|--|--|
| 54 hours at 12/6 per day ..... |  | £1 : 8 : 1½         |  |  |
| 3 Days at 3/- per day .....    |  | 9                   |  |  |
|                                |  | <u>£1 : 17 : 1½</u> |  |  |

B. An officer leaves London 3 p.m. on Monday  
arrives " 9 a.m. on Wednesday  
One days subsistence at 10/- per day is stopped.

He Claims:-

|                                |  |                     |  |  |
|--------------------------------|--|---------------------|--|--|
| 42 hours at 12/6 per day ..... |  | £1 : 1 : 0½         |  |  |
| 1 Day at 3/- per day .....     |  | 3 : 0               |  |  |
|                                |  | <u>£1 : 4 : 10½</u> |  |  |

Officers when proceeding on duty must notify Lieut. Carroll time and date of Departure also time and date of return. Lieut. Carroll will notify Pte. Carpenter

All claims must be handed to Pte. Carpenter who will check them with his subsistence roll and pass them to the O.C. for signature.

"signed" H. W. Henningham Lt.  
O.C. INDUSTRIAL EMPLOYMENT.

Distribution:-

|          |   |               |   |
|----------|---|---------------|---|
| O.C.     | 1 | 1.D.3.f.      | 1 |
| 1.D.3.a. | 1 | Lt. Carroll   | 2 |
| 1.D.3.b. | 1 | Pte Carpenter | 1 |
| 1.D.3.c. | 2 |               |   |
| 1.D.3.e. | 3 |               |   |

362  
20th May 1919.

Office Instruction of 17th March, reference the return showing the number of men by trades and branches of trades for whom 540 forms are held but who have no firm to go to, is cancelled.

Signed H. W. Henningham Lt.  
O.C. INDUSTRIAL EMPLOYMENT.

Distribution:-

|             |   |
|-------------|---|
| O.C.        | 1 |
| 1.D.3.a.    | 1 |
| 1.D.3.b.    | 1 |
| 1.D.3.c.    | 2 |
| 1.D.3.e.    | 3 |
| Lt. Carroll | 1 |

197  
363  
May 20th 1919.

Headquarters A.I.F. Depots in U.K. state that Branches are in some cases communicating on matters affecting Non-Military Employment, Education, etc. direct with Officers Commanding Quotas, and even with individual applicants. All communications on these and cognate matters must be forwarded as follows:-

A. Those relative to Officers to:-

Headquarters, A.I.F. Depots in U.K.

Should it be necessary owing to urgency to communicate direct with the G.O.C. Group regarding an officer, a copy of the communication must be sent at the same time to Headquarters, A.I.F. Depots.

B. Those relative to Other ranks to:-

G.O.C. Group Concerned.

In no case must communications be sent direct to O.C. Quota or individuals.

Signed H. W. Henningham Lt.  
O.C. INDUSTRIAL EMPLOYMENT.

Distribution:-

|             |   |
|-------------|---|
| O.C.        | 1 |
| 1.D.3.a.    | 1 |
| 1.D.3.b.    | 1 |
| 1.D.3.c.    | 2 |
| 1.D.3.e.    | 3 |
| Lt. Carroll | 1 |

O F F I C E                      I N S T R U C T I O N.

May 20th 1919.

198  
364

NON-MILITARY EMPLOYMENT.

Personnel on Non-Military Employment who are to receive a bonus from their employer on the termination of their period on employment shall continue to draw subsistence allowance, such bonus not being considered as wages.

Commonwealth Military Forces (Permanent Staff) and Non-Military Employment. No policy having yet been laid down as to the future of the C.M.F. (Permanent Staff) with the A.I.F. they may, pending further instructions, be granted the advantages of Non-Military Employment in accordance with the existing regulations and instructions.

Discharge in U.K. after Non-Military Employment.

1. Members of the A.I.F. who, having been granted Non-Military Employment, apply for their discharge elsewhere than in Australia, are not to be granted discharge unless for reasons satisfactory to the Director General, and then only, as a rule, on refunding to the Department the cost of such Non-Military Employment.
2. The cost of the Non-Military Employment will be calculated by adding together the following:-
  - (a) Total Military Pay earned by the member during the period of Non-Military Employment, less one months pay.
  - (b) Total subsistence allowance (if any) drawn by the member during the period of Non-Military Employment, less one month's subsistence.
  - (c) All fees, premiums and insurance premiums paid by the Department to or on behalf of the member.
  - (d) The cost of all tools, instruments, books and working clothing, supplied to the member at Public expense, less the value of any returned in good order.

(signed) H.W. Henningham Lt.  
for Lieut. Col.  
O.C. INDUSTRIAL EMPLOYMENT.

Distribution:-

|          |   |                |
|----------|---|----------------|
| O.C.     | 1 |                |
| 1.D.3.a. | 1 |                |
| 1.D.3.b. | 1 |                |
| 1.D.3.c. | 2 |                |
| 1.D.3.e. | 3 | Lt. Carroll 1. |

OFFICE INSTRUCTION

May 23rd 1919.

199  
365

In future all correspondence re Non-Military Employment for the 1st Australian Division is to be forwarded to A.I.F. Depots in U.K.

(signed) H.W. Henningham Lt.  
For Lieut. Col.  
O.C. INDUSTRIAL EMPLOYMENT.

Distribution:-

|             |    |
|-------------|----|
| O.C.        | 1  |
| 1.D.3.a.    | 1  |
| 1.D.3.b.    | 1  |
| 1.D.3.c.    | 2  |
| 1.D.3.e     | 3  |
| Lt. Carroll | 1. |



REPORT FOR WEEK ENDING MAY 3rd, 1919.

From 1.D.3. to 1.D.

During the week ending May 3rd, 151 540 forms were received, 206 recommended and 237 men actually placed out in Non-Military Employment.

Up to date 92 applications for extensions have been recommended.

There is nothing of importance to report for Sub-Sections, the work of which is proceeding satisfactorily.

The following comparisons of results for the month of April with previous figures will give a good idea as to the big improvement there has been in getting men actually put out on their jobs:-

|                          | <u>To the end<br/>of February</u> | <u>For the Month<br/>of March</u> | <u>To the end<br/>of March</u> | <u>For the Month<br/>of April</u> | <u>To the end<br/>of April</u> |
|--------------------------|-----------------------------------|-----------------------------------|--------------------------------|-----------------------------------|--------------------------------|
| Applications received    | 3585                              | 1180                              | 4765                           | 1126                              | 5891                           |
| Applications recommended | 1352                              | 11555                             | 2507                           | 1315                              | 3822                           |
| Men actually placed      | 366                               | 934                               | 1300                           | 1320                              | 2620                           |

During the current week visits have been paid to Swansea and Chepstowe districts. With regard to the former district trade conditions will not permit of many men being placed, except for a few men in the Motor and Electrical trade. The Chepstowe area is more satisfactory and we should be able to place a fair number of men in the large docks and housing scheme which are in the course of completion. The Carpenters and Joiners Society at Barrow-in-Furness advise that owing to the possibility of industrial trouble in that area it would be advisable for this Department to place any men in that district. We have an order for over one hundred men with Vickers at this town, but nothing can be done until the industrial trouble is settled.

Lieut. Col  
O.C. INDUSTRIAL EMPLOYMENT.

3/5/19.

201

REPORT FOR WEEK ENDING MAY 10TH 1919.

FROM 1.D.3.

TO 1.D.

367

During the week ending May 10th. 182 540 Forms were received, 234 recommended and 136 men actually placed out in non-military employment.

Up to date 121 applications for extension have been recommended.

There is nothing of importance to report for sub-sections Motors, Aeroplanes, Electrical, Wools and Textiles, and Miscellaneous.

Detailed reports of other sub-sections are as follows:-

1.D.3.a. SHIPBUILDING.

The Aldaus Boat & Yacht Building Yard, Brightlingsea, has offered to place a number of men in their yards. The weekly return from Messrs Vickers Limited, Barrow-in-Furness, of their labour requirements shows vacancies for 500 men of various shipbuilding trades, but there are no 540 forms or men applying for these positions.

1.D.3.b. GENERAL ENGINEERING.

During the week a representative from this department visited Swansea and district and secured several vacancies for Moulders, which, however, are held up pending approval by local Trade Union authorities.

1.D.3.f. INDUSTRIAL.

During the current week two cases of strike affecting our men have been reported. One in the Aircraft Manufacturing Company at Hendon, where we have ten men and the other in an engineering firm where one man was placed. Those concerned expect the difficulties to be settled within a few days. An organization at Glasgow complained of two of our men being placed with a firm from which five men had already been dismissed. Full information is being obtained by the Area Officer.

The Carpenters & Joiners Union at Barrow-in-Furness has withdrawn their objection to our men being placed with Messrs Vickers Limited.

(Sgd.) W. H. SANDAY, Lt.Colonel,

O.C. INDUSTRIAL EMPLOYMENT.

202

368

REPORT FOR WEEK ENDING MAY 17TH, 1919.

FROM:- 1.D.3.

TO:- 1.D.

During the week ending May 17th 266 applications were received, 194 recommended and 134 men actually placed out on their jobs.

149

Up to date/applications for extensions have been recommended.

The number of working suits issued to men proceeding on N.M.E. for the week total 138, and Overalls 231, and 45 standard sets of Tools have been supplied.

A representative of the Department in the South Wales Area met with a good reception during the week in Newport, and found shortage of labour in the Building Trades, Engineering and Motor Works. Employers in this town were very interested in the scheme and a considerable number of applications for men were obtained and are likely to be supplemented in the near future. In Shipbuilding yards Union difficulties are against employers taking our men into their yards, though they are endeavouring to overcome these, in which case a great number of our men might be employed as there is a large amount of work on hand.

1.D.3. MISCELLANEOUS.

Arrangements are being made for the placing out of several disabled men (with leg amputations) for the purpose of them learning trades which will be useful to them on return to Australia.

A further list of 46 men was submitted on the 8th inst. to the Railway Executive Committee for their approval for the men being placed with various Railway Companies.

1.D.3.f. INDUSTRIAL.

As reported in previous weekly report strikes affecting some of our men occurred in Engineering shops and Aeroplane works; in the case of the former the trouble has now been settled, but a number of the employees have not been reinstated including one of our men.

The trouble at the Aeroplane works has only effected one man and he has been withdrawn pending settlement.

There is nothing to report for sub-sections - Shipbuilding, Motors, Aeroplanes, Electrical, Wools & Textiles or General Engineering.

(Sgd.) W. H. SANDAY, Lt.Colonel,

O.C. INDUSTRIAL EMPLOYMENT.

REPORT FOR WEEK ENDING MAY 24th 1919.

From 1.D.3.

To 1. D.

During the week ending May 24th 151 applications were received, 234 recommended and 157 men actually placed on their jobs.

Up to date 178 applications for extensions have been recommended.

The number of working suits issued to men proceeding on N.M.E. total 117 and overalls 237 and 66 standard sets of tools have been supplied.

The town of Chepstowe in South Wales was visited by a representative of this section this week with a view to getting men into the Government Shipbuilding yards.

A demand there, exists for all classes of skilled workmen, both in the yards and also for building and construction of houses in the newly laid out villages in the vicinity.

The Managers of the works were very interested in our scheme and expressed a desire to help us in every way.

The chiefs at the Admiralty have also been waited upon, and we understand are authorising their managers to communicate their demands for men to us; in the meantime the Union Secretaries of the various branches of trades have been corresponded with to facilitate the acceptance of men in this area - in this direction no hitch is expected as the local Secretaries do not appear to have any objection.

1.D.3.e. MISCELLANEOUS.

A list of 46 men submitted to the Railway Executive's Committee as advised in last week's report has been approved by that body and necessary steps have been taken to have these men placed. A further list is being submitted early next week.

1.D.3.f. INDUSTRIAL.

The industrial unrest in the Engineering and Aeroplane trades referred to in last week's report resulted in a number of our men having to be recalled, but have now been placed with other firms not affected by the dispute.

Complaints have been received from two Unions objecting to the placing of Australians in their trades, their objection being that they have their own members unemployed.

As it is the policy of this Department to fall in with the wishes of the Unions and not place any of our men in trades where unemployment exists, and should it be shown that such is the case with the unions concerned then our men will be withdrawn, but no definite action can be taken until further negotiations take place when the difficulties should be amicably settled. The Unions at Chepstowe and Newport have been communicated with and arrangements made for their approval for the placing of Australians in that area.

Lieut. Col.  
O.C. INDUSTRIAL EMPLOYMENT.

24/5/19.

REPORT FOR WEEK ENDING MAY 31st 1919.

370

From 1.D.3.

To 1. D.

204

During the week ending May 31st, 194 applications were received 208 recommended, and 194 men actually placed on Non-Military Employment.

Up to date 225 applications for extensions have been recommended 47 being put through this week.

The number of working suits issued to men proceeding on N.M.E. during the week total 135, overalls 242, and standard sets of tools equal 54.

a reply to

In answer to one of our circulars sent to various firms in the town of Huddersfield was visited and a ready response was met with for labour in various industries, more especially experienced men.

In common with South Wales the scarcity exists for fully experienced men in most classes of trades and we shall be able to place approximately 20 men in engineering and building trades with prospects of this number being considerably supplemented.

There is nothing to report for the various sections. Statistics for which as per attached appendix.

INDUSTRIAL.

Negotiations were carried out during the week with several Unions associated with the Shipbuilding and Building Trades at Chepstow, and the local District Council interviewed. Every assistance was offered in placing men. The one difficulty being pointed out that accommodation in this area was hard to obtain and before sending men to commence employment arrangements would have to be made for their housing.

Two complaints from Industrial Unions were investigated; one from the Amalgamated Instruments Makers Society, who stated that our men were taking the places of their men out of employment. On investigation it was found that only four Australians were engaged in this trade and in these cases there was no foundation for the complaint and the matter was satisfactorily explained to the Union Officials.

The other complaint, which emanated from the Builders' Labourers Union, was of a more serious nature. It was alleged that men had been placed with a firm at Warminster as labourers and were being paid less than the Union rate of wage. As we had a record of only 3 men, who were skilled, being sent to this town an officer was sent to this district to investigate the matter, and on investigation it was found that a number of men, who had been granted leave (waiting a family boat), had been advised that they were at liberty to commence Non-Military Employment, if they could procure same.

were

It was also ascertained that 5 men working in Sawmills controlled by the Board of Trade. The Union was advised of the result of our investigations, and as it is not the policy of this Department to place unskilled labourers, owing to the great number of such men being unemployed in England, arrangements would be made to have these men withdrawn..

Lieut. Col.  
O. i/c. INDUSTRIAL EMPLOYMENT.