

AWM4
Australian Imperial Force unit war diaries,
1914-18 War

Formation Headquarters

Item number: 1/6/16 Part 2

Title: General Staff, General
Headquarters, Egyptian
Expeditionary Force

August 1917



AWM4-1/6/16PART2

Chemical Adviser,
Central Gas School,
TEL EL KEBIR.

Enc: Please see the attached copy of a letter from
General Officer Commanding, Eastern Force, for your remarks.

45,000 box respirators have recently been received
and are being issued. At present no further supplies are
advised from the United Kingdom to complete the original demand
for about 120,000. Would it be possible to cease any further
issues of drill P.H. Helmets to the fighting troops now that the
box respirator is in possession? The issue of 1 drill P.H.
helmet per man, when no transport is available to take them
about, would appear to be a most wasteful method.

Have you any suggestions for carrying out the P.H.
helmet drill so that there should be no possibility of infection?
Apparently, in practice, it is not feasible to wash each mouth-
piece after use.

G.H.Q., E.E.F.
1st August 1917.

(Sd.) *J. M. Hutton*
Lieut-Colonel, ^{may} G-S
General Staff.

Chief of the General Staff,
General Headquarters.

1. With reference to your G.S.485/2 dated 25th July 1917,
it is understood that in addition to box respirators P.H.helmets
will also be in possession.

Fighting troops not at present equipped with box respira-
tors carry two P.H. helmets and in addition units have a stock
of drill helmets up to 10% of their strength.

Owing to the presence of diphtheria it has been thought
inadvisable to pass a drill helmet from man to man and it is
therefore considered ^{desirable} ~~advisable~~ that drill helmets should be
issued at the rate of one per man. No provision, however, can
be made for their transport.

2. It is not known what stock of box respirators and P.H.
helmets is available, but after the fighting troops have received
their issue, it is recommended that the C.T.C. Companies allotted
as 1st Line Transport to divisions should be equipped before
Divisional Ammunition Columns and Trains, and that C.T.C. Companies
employed on convoy work should come last.

(Sgd) L.R.Schuster,
Major, G.S.

Headquarters,
Eastern Force.
28th July 1917.

for Lieutenant-General
Commanding Eastern Force.

* Forwards scheme suggested in your FW/68 of 18/7/17.

1200
6/17
C/5730
A

General Officer Commanding,
Eastern Force.

The Commander-in-Chief has decided that the Divisional Cavalry Squadrons serving on the PALESTINE front shall be organised into two Corps Cavalry Regiments at an early date.

It is considered that one regiment should be formed by completing the Headquarters and two squadrons of Westminster Dragoons, at present forming the Divisional Cavalry of the 60th and 74th Divisions respectively, by moving up to the front "C" Squadron from the School of Instruction, ZEITOUN.

To form the second Corps Cavalry Regiment there will then be available two Squadrons of Herts Yeomanry, one Squadron Glasgow Yeomanry and one Squadron Duke of Lancaster's Own Yeomanry.

It is suggested that a regiment should be formed by

- (a) creating a Headquarters for the two Herts Yeomanry Squadrons, and
- (b) attaching either the Glasgow Yeomanry or the Duke of Lancaster's Own Yeomanry as the third Squadron.

Whichever of these two latter Squadrons is not selected for incorporation in the regiment will be transferred to CAIRO and become the Squadron attached to the Imperial School of Instruction, ZEITOUN.

Will you please forward to General Headquarters, as soon as possible, any remarks you may have to make on these proposals, stating particularly which Squadron you consider should be detailed to proceed to ZEITOUN.

(Sd) *Richard Bell*

G.H.Q., E.E.F.
2/8/17.

Major-General.
Chief of the General Staff.
Egyptian Expeditionary Force.

65

SECRET

48/7/72.
2.8.17.

B

W/10

General Officer Commanding,
Palestine L. of C. Defences.

The attached paper which was brought unofficially to General Headquarters by the Liaison Officer with the French Detachment while on a recent visit is forwarded to you herewith. The Commander-in-Chief has seen this paper and would be glad to have your remarks on Colonel de Piepape's proposals as soon as possible.

(sd) H. Lynden Bell.

G.H.Q., E.E.F.
2nd August 1917.

Major General,
Chief of the General Staff,
Egyptian Expeditionary Force.

of

Etat-Major.

PROJET D'UNE ORGANISATION D'UNE COLONNE MOBILE.

No. 2944/JD.

I. UNE COLONNE MOBILE sera constituée au D.F.P. et devra être constamment prête à partir; elle comprendra en principe, les éléments ci après :

	Offi- ciers	Trou- pe.	Ani- maux.	Voit- ures.	Cham- eaux.
soit environ :					
Etat-Major du D.F.P.	4	15	10	2	8
115me R.I.T. - E.M. et 2 Cies.	10	290	54	14	76
1er Tir. ... do ...	10	330	51	13	90
2me Tir. ... do ...	10	330	51	13	90
C.M. 7 du 1er Tir.	3	120	58	3	46
Peloton de spahis.	2	32	37	1	16
Cie du Génie à 2 sections.	2	100	38	8	34
Section Télégraphique.	-	40	20	4	16
Ambulance.	3	66	78	7	34
Service des Subsistances.	1	10	-	-	160
Echelon de Parc.	-	10	2	-	109
Vétérinaire.	1	1	1	-	-
Trésor et postes.	1	5	4	-	4
	<u>47</u>	<u>1349</u>	<u>424</u>	<u>65</u>	<u>683</u>

Les autres éléments de D.F.P. resteront à KHAN YUNUS où ils continueront à assurer les différents services de défense et de garde actuellement en vigueur.

II. LA COLONNE MOBILE sera constituée d'après les bases suivantes

(A) - DISPOSITIONS COMMUNES AUX DIFFERENTES UNITES.

(a) TENUE: tenue Kaki (à l'exclusion de la tenue de drap), casq colonial, rechange de linge et chaussures, capote et couvre-pie bonnet de police ou chéchia, toile de tente, campement, outils portatifs, deux sacs à terre par homme.

Une revue détaillé des paquetages et des voitures sera passée avant le départ pour éviter toute surcharge.

(b) MUNITIONS: 88 cartouches par fusil sur l'homme.
55 do do au T.O.
157 do do à l'échelon de munition

300

(c) VIVRES: Vivres du jour sur l'homme.
1 jour de vivres de réserve sur l'homme.
2 Kgs d'orge ou d'avoine sur l'animal.
1 jour de vivres de réserve et d'avoine sur les voitures à vivres et à bagages des Cies et de l'E.M. du Btn.
1 jour de vivres pour les hommes et pour les animaux et bois au T.R. de chaque Btn.

(d) VOITURES: seront toutes attelées à trois, sauf les voitures à munitions qui seront attelées à quatre; 1 brancard de rechange par deux voitures.

(e) BAGAGES: réduits au minimum :
1 seule cantine réglementaire par Officier.
1 ballot par Adjudant.
1 tente de marche par 2 Officiers.

(B). DISPOSITIONS..

(B) DISPOSITIONS PARTICULIERES A L'INFANTERIE. 67

(a) 115e R.I.T.: Effectif minimum par Cie: 130 hommes (non compris le P.E.M. de Btn.).

5 Voitures { (1 voiture médicale.
(1 voiture d'outils (80 pelles de parc-40 pioches)
artifices éclairants-200 sacs à terre.
(1 voiture de munitions.
(1 voiture pour blessés.
1 haquet.

T.R. { (3 Voitures à vivres et à bagages.
(1 voiture à forge.
9 Voitures { (4 voitures pour vivres, avoine et bois.
(1 tonneau à eau.
(4 mulets haut le pied.

Convoi de (Transport des sacs à raison de 8 sacs (3).
(par chameaux40 chameaux (2).
chameaux (Complément d'eau pour porter la réserve à 2 jours
(1) (pour les hommes et 1 jour pour les animaux à raison
(de 4 litres par homme et par jour et 20 litres par
animal.....35 chameaux.

(b) BATAILLONS DES 1e et 2e TIRAILLEURS: Effectif minimum par Cie: 150 hommes (non compris l'effectif de P.E.M. du Btn.)

T.C. { (1 voiture médicale.
(1 voiture d'outils (80 pelles de parc-40 pioches).
5 Voitures { (1 voiture de munitions fournie et attelée par le
115e R.I.T.
(1 tonneau à eau.
(1 voiture pour blessés.

T.R. { (3 voitures à vivres et à bagages.
(4 voitures pour vivres, fourrages et bois.
8 Voitures { (1 tonneau à eau
(4 mulets haut le pied.

Convoi de (Transport des sacs (3)50 chameaux (2).
chameaux (Transport des réserves d'eau....40 chameaux.
(I)

(c) COMPAGNIE DE MITRAILLEUSES.
4 sections.

Effectif minimum: 120 - 48 animaux de bât dont 4 haut le pied.

Munitions: 62.208 cartouches D.A.M. sur bandes portées par mulets de bât (soit 7.776 cartouches par pièce)
54 cartouches en chargeur par mousqueton.

T.C.

N O T A : (1) En plus de leur charge calculée à raison de 80 kilogs. par animaux, les chameaux porteront deux jours de vivres pour leurs conducteurs et un jour de vivres (secs) pour eux. (5 kgs. de graines et 6 kilogs. de fourrages par animal). Ils devront avoir bu avant le départ.

(2) Le nombre des chameaux prévus pour transport des sacs donnera un excédent d'animaux qui resteront haut-le-pied.

(3) Poids maximum - 10 kilogs. par sac.

T.C. (1 voiture a vivres et a bagages.
 (2 voitures pour les vivres, avoine
 (et bois.

Convoi de (Transport de sacs.....16 Chameaux (w).
 Chameaux (1). (Reserve d'eau.....30 Chameaux.

C. - PELOTON DE SPAHIS.

Effectif Minimum. 30 sabres.

Munitions. (100 cartouches en chargeurs par mousqueton
 (40 cartouches par revolver.
 (Munitions du collier a cartouches quand l'unitè
 (en sera pourvue.

T.R. (1 voiture a vivres et bagages.

Convoi de (Vivres, fourrages, bois..... 6 chameaux
 Chameaux (1) (Transport des reserves d'eau ...10 chameaux

D. - COMPAGNIE DU GENIE.

2 sections. - Effectif minimum : 100 hommes.

Munitions: 78 cartouches par hommes arme du mousqueton.

(8 mulets de bat charges (outillage et engin de destruction.)

(2 mulets haut le pied.

T.C. (4 voitures outillages, engins de destruction et
 (materiel de defense.
 (1 voiture $\frac{1}{2}$ 94 $\frac{1}{2}$ 3

(1 voiture a vivres de reserve et a bagages.
 (2 voitures a vivres, avoine et bois.

T.R.

Convoi de (Sacs d'hommes.,, 16 chameaux.
 chameaux (1) (Reserve d'eau... .. 18 chameaux.

E. - SECTION TELEGRAPHIQUE.

Effectif minimum. 40 hommes.

Munitions: 78 cartouches par mousqueton.
 (5 mulets de bat charges de materiel telegraphique
 (25 Km. - 10 appareils - q poste optique.

T.C. (1 voiture derouleuse - 8 Km Cable de campagne.
 (1 voiture technique.

T.R. (1 voiture vivres, de reserve et bagages.
 (1 voiture vivres, avoine et bois.

Convoi de (vivres, fourrages et bois. 6 chameaux.
 chameaux. (Reserve d'eau. 10 chameaux.

c F. AMBULANCE.

Effectif. (Medecin Chef de service du D.F.P.
(un Medecin Aide-Major.
(Un Medecin auxiliaire (4)
(1 sous-officier d'approvisionnement (4)
(16 infirmiers.
(50 conducteurs.

Train. (14 mulets de cacolet.
(4 mulets de litiere.
(6 mulets haut le pied.
(27 mulets de bat.
(1 voiture tonneau.
(1 voiture a vivres, fourrages et bois.
(5 voitures Kellner (eventuellement)

Convoi de Chameaux. (Reserves d'eau... .. 34 chameaux.
(2 jours pour hommes, 1 jour pour animaux,
(1,000 litres pour blesses.

G. SERVICE DES SUBSISTANCES.

Effectif:- 1 officier - 10 hommes.
(2 sections portant chacune 1 jour de
Convoi d'approvisionnement: (vivres pour 1500 hommes, 400 chevaux
(et mulets.

Chaque section. 80 chameaux.

H. ECHELON DE PARC.

Marechal des logis MELAC.

125,000	cartouches DAM en paquets.	45 chameaux.
10,000	cartouches D en chargeurs.			.	4 chameaux.
40,000	cartouches DAM sur bandes Hotchkiss....			.	16 chameaux.
2,000	grenades.	20 chameaux.
5,000	sacs a terre.	20 chameaux.
300	kilogs d'explosifs.	4 chameaux.

1 grade monte de la Cie du Genie et 8 hommes du 2e Tir.

I. SERVICE VETERINAIRE.

Le Veterinaire Chef du Service du D.F.P. marche avec la Colonne.

MATERIEL. Une cantine veterinaire (au T.R. du 115e)

% SERVICE DE LA TRESORERIE ET DES POSTES.

Toutes les correspondances seront acheminees par la Base sur KHAN YUNUS.
1 Payeur mobile marchera avec la colonne.
1 Sous-agent seracharge de la liaison pour le transport du courrier entre le Payeur Mobile de KHAN YUNUS et celui de la colonne.
2 hommes.

Convoi de chameaux...	4
Escorte	2 Spahis.

NOTA. - (4) - seront montes par prelevement sur les chevaux de selle inutilises par le personnel restant a la section d' hospitalisation.

k.

ELEMENTS RESTANT A KHAN YUNUS ET DISPOSITIONS PARTICULIERES
LES CONCERNANT.

Les éléments restant à Khan Yunus comprennent:

L'E.M. du Secteur de défense de Khan Yunus.
1 Cie du 115e R.I.T.
1 Cie du 1er Tirailleurs.
2 Cies du 2e Tirailleurs.
La section d'hospitalisation.
1 Détachement télégraphique.
Les petits dépôts des unités de la Colonne Mobile.
L'annexe des Subsistances.
Le D.R.M. et le dépôt d'animaux malades.

Ces éléments seront placés sous les ordres du plus ancien des quatre Commandants de Cie.

L'organisation actuelle du Secteur de défense en 3 sous-secteurs sera maintenue; la seule modification sera la suppression des postes de Spahis qui seront relevés par un poste fourni par la Cie du 115e R.I.T.

La 2ème Cie du 2ème Tirailleurs relèvera les services particuliers de garde actuellement fournis par les 115e R.I.T. et 1er Tirailleurs; Supply, Payeur Anglais, Parc de Munitions, Gare, Poste Central télégraphique anglais. Seul, le poste de la pompe de Beni Sellah continuera à être fourni par le 115e R.I.T. qui y installera un Poste permanent.

La section d'Hospitalisation comprenant: 2 Médecins, 1 Pharmacien, 1 Officier gestionnaire, 55 infirmiers, 18 hommes du train, assurera le service médical des groupes restant à Khan Yunus.

Le Détachement Télégraphique sera composé de:
1 Sargent - 6 hommes.

Le réseau laissé sur place comprendra: le central voisin du P.C. du Commandant du secteur relié aux trois grand-gardes. Les autres lignes seront relevées.

Dans chaque Bataillon, les petits dépôts des Unités parties seront rattachés respectivement à la Cie restante; les petits dépôts du Génie et des spahis, s'il y a lieu, seront pris en substance à la Cie de réserve du 2ème Tirailleurs.

L'annexe des Subsistances continuera à fonctionner dans ces conditions actuelles.

Le D.R.M. et le dépôt d'animaux malades seront rattachés à la Cie de réserve du 2ème Tirailleurs et placés sous les ordres d'un grade de l'équipage mulétier de la Cie du Génie.

Le

Le service vétérinaire sera assuré par un vétérinaire auxiliaire.

Le Centre d'instruction sera dissout dès la formation de la Colonne Mobile.

Il en sera de même de la Section de discipline, dont tous les hommes en état de marcher sont affectés à des éléments marchant.

~~Ensemble~~ L. OPERATIONS A FAIRE DANS LES UNITES AVANT LE DEPART.

Changer les effets de toile blanchis des partants contre des effets kaki neufs (approvisionnement de collections sera entretenu dans ce but à l'annexe des subsistances).

Changer les toiles de tente blanchies contre des toiles kaki neuves (approvisionnement de toiles de tente doit être entretenu dans ce but à l'annexe des subsistances).

Recevoir du parc fantasses supplémentaires.

Recevoir boussoles en réserve à l'Etat-Major (deux par section partant, en plus de celles dont sont déjà dotées les unités).

Toucher au parc des outils et des sacs à terre pour compléter la dotation des corps.

Abattre les tentes et les entreposer dans chaque unité, ainsi que le matériel de camp. Le matériel du Génie et des Spahis sera entreposé au parc.

Le Colonel, Commandant le D.F.P.
PPEPAPE.

P. A.
Le Chef d'Etat-Major.

Sgd. †

Destinataires :-

115e R.I.T.	1er Tir	2e Tir.
Spahis	Ambulance	Génie.
Annexe Subs.	Payeur Mob.	Sect. Telegr.
Parc annexe.		

Etat-Major.

le 18 Juillet, 1917.

No. 2945/CD.

NOTE de SERVICE.

Fait envoi d'un projet d'organisation de colonne mobile pour le cas où la coopération de D.F.P. serait demandée par l'Autorité Militaire Anglaise.

Ce projet ne doit être considéré que comme une directive destinée à servir de base au moment du besoin, les modalités d'emploi pouvant varier à l'infini.

En particulier, ces convois de chameaux ne sont mentionnés qu'à titre d'indication.

Sous ces réserves, le projet devra être étudié en détail dans chaque unité, de telle sorte qu'il puisse être mis rapidement à exécution le cas échéant.

Des consignes précises seront établies fixant le rôle de chacun, aussi bien pour les partants que pour les restants; le numéro de l'unité restante sera laissé en blanc si la désignation ne doit être faite qu'au dernier moment.

Les bons pour toucher les vivres, munitions et outils seront préparés à l'avance.

Les instructions seront données pour la confection des ballots, l'arrimage des effets, ustensiles de campement, et

Des dispositions minutieuses seront prises pour la constitution des équipages conformément au projet (désignation des voitures, conducteurs, animaux; attelages à 3 ou à 4, arrimage des chargements, etc.)

Dans chaque bataillon, unités ou formation, il sera exécuté, d'ici au 5 août au moins un exercice de mobilisation. Les sacs et ballots seront faits, toutes les consignes prises; les hommes dresseront le bivouac hors de la ligne de surveillance; les voitures, chargées réellement, exécuteront un exercice de roulement de quelques Kilomètres. Un rapport détaillé sera adressé à la suite du ou des exercices.

Le Colonel Commandant le D.F.P.

(Signé) PIEPAPE.

D: 3 Btns.	Ambulance.
Génie.	Annexe des subsistances.
Spahis.	Tr. et Postes.
Det. Télégr.	Parc Annexe.
	Base.

WHD
SECRET.

42 A
Copy No. 41.....

FORCE ORDER No. 47

by

GENERAL SIR E. H. H. ALLENBY, K. C. B.

Commander-in-Chief, Egyptian Expeditionary Force.

GENERAL HEADQUARTERS,

3rd August, 1917.

1. Under War Office authority (telegram No. 38925 cipher S.D.S. dated 2nd August, 1917), the divisions at present forming part of the Eastern Force will be organized as from 2nd August, 1917, into two Corps and a Mounted Corps, as under :-

(a) 20th Corps:-

53rd Division.
60th Division.
74th Division.

(b) 21st Corps:-

52nd Division.
54th Division.
76th Division.

(c) Desert Mounted Corps:-

Australian & New Zealand Mounted Division.
Australian Mounted Division.
Yeomanry Mounted Division.

2. The 75th Division, less the 252nd Brigade at present attached to 54th Division, will remain on the Lines of Communication pending further orders.

3. Detailed establishments on which Corps Headquarters will be formed, together with list of appointments in connection with this reorganization, will be issued at an early date.

4. Units at present forming part of Force Troops, Eastern Force, will be provisionally re-allotted as under:-

General Headquarters Troops -

Engineers -

Printing Coy., R.E. (G.H.Q. Section and Army Section)

Signal Troops -

G.H.Q. Signal Coy.

Pigeon Section.

N. 15 and Nos. 23 and 24 Air Line Sections.

BS, GY, MA, NB, NN Cable Sections.

No. 9 Wagon W/T Section.

London Pack W/T Section.

Medical -

Australian Field Bacteriological Laboratory.

/ A.S.O.

General Headquarters Troops (contd.) -

Army Service Corps -
Mechanical Transport -
895th M.T.Coy., A.S.C. (Caterpillar Tractor Supply Column).
956th M.T.Coy. A.S.C. (Ford Supply Company).
5th Reserve Field Ambulance and Workshop Unit.
6th Reserve Field Ambulance and Workshop Unit.
Supply Companies -
No. 22 L. of C. Supply Company.
Camel Transport Corps -
B, M, N, Q, R, Companies.

20th Corps Troops -

Artillery -
96th Heavy Artillery Group.
30th and 85th Anti-Aircraft Section.
Engineers -
220th A.T. Company, R.E.
1/23rd Sikh Pioneers.
2/23rd Sikh Pioneers.
Signal Service -
1st Heavy Artillery Signal Section.
BR Cable Section.
Army Service Corps -
Mechanical Transport -
810th M.T.Coy., A.S.C. (attached Heavy Artillery).
811th M.T.Coy., A.S.C. (attached Heavy Artillery).
904th M.T.Coy., A.S.C. (2 sections) (attached Heavy Arty.)
963rd M.T.Coy., A.S.C. (attached Heavy Artillery).
Camel Transport Corps -
E, G, P, Companies.

21st Corps Troops -

Artillery -
97th Heavy Artillery Group.
100th Heavy Artillery Group.
38th, 55th and 102nd Anti-Aircraft Sections.
Machine Gun Corps -
211th Machine Gun Company.
'E' Company, Heavy Section.
Engineers -
14th A.T. Coy., R.E.
35th A.T. Coy., R.E.
Signal Service -
2nd Heavy Artillery Signal Section.
W.C Cable Section (late W/T Section).
Infantry -
1st Bn. British West Indies Regiment.
Army Service Corps -
Mechanical Transport -
904th M.T.Coy., A.S.C. (2 sections) (att'd Heavy Arty.)
917th M.T.Coy., A.S.C. (1 section) (att'd Heavy Arty.)
951st M.T.Coy., A.S.C. (attached Heavy Artillery).
952nd M.T.Coy., A.S.C. (attached Heavy Artillery).
955th M.T.Coy., A.S.C. (attached Heavy Artillery).
961st M.T.Coy., A.S.C. (attached Heavy A.G. Corps).
964th M.T.Coy., A.S.C. (attached Heavy Artillery).
965th M.T.Coy., A.S.C. (attached Heavy Artillery).
968th M.T.Coy., A.S.C. (attached Heavy Artillery).
Camel Transport Corps -
D, F, K, Companies.

/ Desert Mtd. Corps Tps.

94

Desert Mounted Corps Troops -

Mounted Troops -

7th Mounted Brigade (on arrival)

Imperial Camel Brigade.

Machine Gun Corps -

Nos. 11 and 12 Light Armoured Motor Batteries.

Nos. 1 and 7 Light Ford Car Patrols.

Signal Service -

No. 21 Airline Section.

HH, KK, AIF, Cable Section.

Camel Transport Corps -

A, C, L, Companies.

5. The General Officer Commanding, Eastern Force, will commence the formation of these Corps forthwith, and will carry out any redistribution that may be required under the new organization, and such redistribution will be completed before the 12th August.

6. General Headquarters, Egyptian Expeditionary Force, will be established at Kilometre 207 on the KANTARA - DEIR EL BELAH Railway at 1200 on August 12th, 1917, at which time the General Officer Commanding-in-Chief will assume direct command of the troops now composing the Eastern Force. Until that time Lieut-General Sir Philip Chetwode will be in temporary command of these troops, and present channels of correspondence will be maintained.

Alvanda Bell

Major-General,
Chief of the General Staff,
Egyptian Expeditionary Force.

Issued to :-

Copy No.

- | | |
|----------------------|-------------------------------|
| 1. G-in-C. | 21. Chemical Adviser. |
| 2. C.G.S. | 22. A.A.G., 3rd Echelon. |
| 3. "O". | 23. D.O.B.D., Alexandria. |
| 4. "I". | 24. G.O.C., Eastern Force. |
| 5. "A". | 25. " 20th Corps. |
| 6. "Q". | 26. " 21st " |
| 7. M.G.R.A. | 27. " Desert Mounted Corps. |
| 8. E-in-C. | 28. " D. & W. Force. |
| 9. D.A.S. | 29. " Southern Canal Sect. |
| 10. A.M.S. | 30. " M.E.B., R.F.C. |
| 11. D.S.T. | 31. " Alexandria Dist. |
| 12. D.O.S. | 32. " Palestine L. of C.D. |
| 13. D.M.S. | 33. Insp., Palestine L. of C. |
| 14. D.V.S. | 34. O.C., Admin. Con., I.C.C. |
| 15. D.R. | 35. O.C., A. & N.Z. Trg.D. |
| 16. D. of W. | 36. Comdt., Zeitoun School. |
| 17. D.A.P.S. | 37. G-in-C., E.I. Station. |
| 18. Provost Marshal. | 38. Rear-Admiral, EGYPT. |
| 19. Comnd., Paymr. | 39. G.S.O.1, Naval, Ismailia. |
| 20. Princ. Chaplain. | 40. D.R.T. |
| | 41. W.D. |

nm

SECRET

G.S. Z/28/8.

75 A

General Officer Commanding,
Delta and Western Force.



The withdrawal of No. 2 Light Car Patrol from the DAKHLA - KHARGA area for transfer to the Coastal Section has been agreed to by the Military Administrator, Frontier Districts Administration, in view of the present satisfactory political situation in the former district.

Colonel Hunter points out, however, that there is always the possibility of a raid on DAKHLA from KUFRA in the late Autumn, during November and December, after the date crop is harvested, and in view of this possibility it is suggested that No. 3 Light Car Patrol might be stationed near MUT during this season, the KHARGA Oasis being considered free from menace.

Will you please forward your views on this proposal to General Headquarters in due course ?

(Sd) A Rynden Bell.

G.H.Q.
E.E.F.
4/8/17.

Major-General,
Chief of the General Staff,
Egyptian Expeditionary Force.

G.S. 8/25.

16 B.

MD
The Commandant,
School of Instruction,
ZEITOUN.



The attached copy of a letter from Eastern Force is forwarded for your information. As regards -

1. If possible this should be done during the present course.
2. ~~Can~~ ~~this~~ ~~shown~~ be worked into the 10-day course.
5. (a) Can this be done.
(b) It is understood that a Field Firing Range is being provided.
6. This presumably refers to the Officers General Course. The latter paragraph might be adopted for the present course.
7. When General Headquarters moves up, it is hoped to have frequent Conferences on Training, at which the Commandant will be present.
8. Will you arrange for this ?

(Ed) J. M. Boulton
Major

fw
Lieut-Colonel,
General Staff.

G.H.Q., E.E.F.
4/8/17.

Chief of the General Staff,
General Headquarters.

With reference to the Syllabus of Courses held at the Imperial School of Instruction, Zeitoun, and Branch School of Instruction, El Arish, the following remarks and suggestions are submitted :-

Courses attended by candidates from Mounted Units.

1. OFFICERS' COURSE. That is this course is composed mainly of Infantry Officers, and the Drill is entirely Infantry Drill, a Cavalry Officer spends some hours daily in doing what is little or no use to him.

Could an Instructor be provided to take a course of Mounted Officers in Cavalry Drill during the drill hours.

2. HOTCHKISS GUN COURSE.

(a) That the course be extended to 12 working days so as to allow for a little tactical training in the use of the gun, including mounted action.

(b) That particular attention be given (as is already probably the case) to the use of ground, both in attack and defence, during instruction in attack and fire action.

3. SIGNALLING COURSE. That items 15 and 30 in the Telephone Syllabus should be very carefully taught, as recourse to the verbal sending of messages in the field is very often made, particularly in Regimental and Squadron Offices. Mistakes are very apt to appear (particularly in figures) in verbally sent messages, which can only be overcome by special tuition in the clearness of enunciation of similar sounding words and letters.

Courses attended by Candidates from Divisions.

4. GENERAL COURSE.

(a) The organization and training of a platoon, as laid down in "Instructions for the Training of Platoons for

mounted
work done
at Cavalry
School

Offensive Action, 1917", does not appear to be taught. 78

(b) The normal Formation for the Attack, as laid down in "Organization of an Infantry Battalion and the Normal Formation for Attack", does not appear to be practised.

5. MUSKETRY.

(a) Much of this instruction is dependent upon the use of appliances. As units in the field have almost invariably to improvise their materials, it is suggested that practical illustration in improvising these appliances be given.

(b) Practical examples of Field Practices, at which lessons in "Fire Control" might be given, should be included.

6. As officers, generally, know the principles of their work, as laid down in the text books, but are weak in putting theory into practice, it is suggested that the syllabus should include more out-of-door work in the shape of Brigade and Regimental exercises, both with and without troops.

In addition, platoon commanders might have more instruction in looking after their men as regards their health and comfort. This is a branch of their work in which they are particularly weak.

7. It is suggested that Staff Officers from Divisions at the front should visit the School from time to time to see the methods of instruction, and there should be an interchange of views between him and the Commandant.

These visits would thus augment the liaison between Instructors and units at the front already formed by attaching the Zeitoun Instructional Staff to front line units for short periods.

8. It is considered desirable that instruction in -

- (a) Indirect Fire.
- (b) Revolver Shooting

should be added to the Machine Gun Courses.

H.Q. E.F.

31/8/17.

(Sgd) G. P. DAWNAY,
B.G.G.S.
for Lieut-General,
Commanding Eastern Force.

SECRET.

SECRET ⁷⁹

From:- Arthur, Cairo.

To:- Hansett, Wejh.

A.B.144

1/17/17

Gen 1925

Message for Lawrence begins as follows:-

Successfully carried out reconnaissance of KURTILLA and landing ground selected at foot of and south of high ground where stand the Police Buildings.

The following petrol and stores, it is suggested, should form a dump at Police Buildings.

A.A. petrol.	300 gallons.
Oil.	50 gallons.
100-lb bombs.	12
50-lb bombs.	50
Propellers and extractor.	2
Tyres.	6
Wheels.	4
Inner tubes.	12

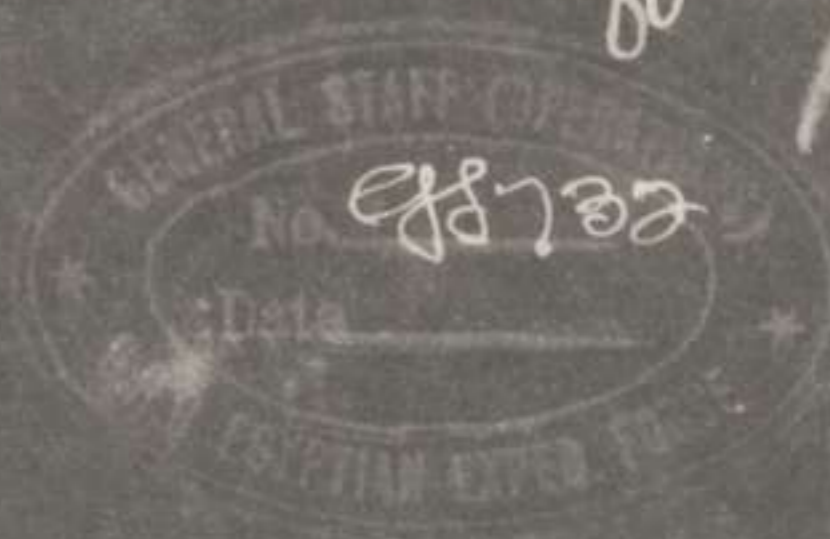
and in addition - shock absorber, tail skid and springs, assortment of spare struts, small spares, machine and engine.

If available at former place these should be taken from WEJH to AKABA. Will send direct from SUHJ on receiving your report of what is not available. In order that aeroplane co-operation with Arab forces may be available at short notice, if required, consider this first dump should be formed from AKABA as soon as possible. Later subsequent supplies would be sent. To assist location by aeroplane large white cross of canvas should be placed near buildings.

Copies to:- C(a).
 C(b).
 C.D.S.
 I.
 Q.
 R.F.C.
 Filed:- G.S.Z/16/28.
 C.S. Cables.
 W.D.



200
General Officer Commanding,
Southern Canal Section.



With reference to your S.G.S. 148, dated 1st August, it is regretted that the scheme for an experimental Indian Camel Company, put forward by Major Potter, cannot be approved. There are not at present sufficient riding camels to make good the wastage in Camel Corps units already formed, and the formation of additional units is, therefore, out of the question.

The provision of suitable British officers for service in the proposed Camel Corps Company would also be a matter of great difficulty. Major Potter's proposal will, however, be borne in mind, and, should circumstances alter, the question will again be taken up.

(Sd) A. R. Bell

G.H.Q.
E.E.F.
6/8/17.

Major General,
Chief of the General Staff,
Egyptian Expeditionary Force.

ms

G.S. 606.

81 B



General Officer Commanding.,
Southern Canal Section.

The 1st South African Field Artillery Brigade, now at Moascar, will form part of the 75th Divisional Artillery and should be converted at once from a three 4-gun to a two 6-gun brigade, the batteries being lettered 'A' and 'B'.

All personnel surplus to the requirements of these batteries will go towards the formation of Nos. 3 and 4 Sections of the 75th D.A.C.

The 13-pr. Q.F. equipment of this brigade will eventually be exchanged for the 18-pr. equipment of the 19th R.H.A. Brigade, Australian Mounted Division.

The War Establishment of Brigade Headquarters will be as in Part VII, No. 351/18, page 63 (iv), and that for the batteries as on pages 65 and 66.

The War Establishment of the D.A.C. will be as laid down in the Provisional Establishment, dated June 1917, as amended by General Routine Orders 2708 and 2721.

Copies of this Establishment can be obtained from the Base Army Printing and Stationery Depot.

The Officer Commanding, South African Brigade

Copies to:- should report to the M.G., R.A., General Headquarters to
A. discuss personally the re-organisation of the Brigade.
Q.
M.G.R.A.
A.M.S.

(Sd) A Lynden Bell

G.H.Q., E.E.F.
6th August 1917.

Major-General.
Chief of the General Staff.
Egyptian Expeditionary Force.

General Officer Commanding,
Southern Canal Section.

The Artillery for the 75th Division will be organised at MOASCAR. It will consist of the following units, constituted as shown :-

172nd Brigade, R.F.A.

- (a) 172nd Bde. Headquarters.
- (b) 389th Battery, R.F.A., becomes "A" Battery.
- (b) 390th " " " " "B" "
- (c) 1 Battery 3.7" Howrs. " "C" "

37th Brigade, R.F.A.

- (a) Brigade Headquarters of 3.7" Howr. Bde.
- (b) 391st Battery, R.F.A. becomes "A" Battery.
- (b) 392nd " " " " "B" "
- (c) 1 Battery 3.7" Howrs. " "C" "

* 1st South African Brigade, R.F.A.

- (a) Own Headquarters.
- (b) 1st Battery becomes "A" Battery.
- (b) 2nd " " " " "B" "
- (c) 1 Battery 3.7" Hrs. " "C" "

* At present this Brigade has three batteries of 4 guns each; these will be converted into two batteries of 6 guns, in accordance with instructions sent in this office No. G.S. 606 of the 6th inst.

The War Establishment of Divisional Artillery Headquarters, Batteries, and Brigades, will be on Part VII, W.E.

D.A.C. Headquarters, with Commanding Officer, will be appointed by General Headquarters.

No. 1 Section found from 172nd Brigade.

No. 2 " " " 37th "

No. 3 " " " 1st South African Bde.

'B' Echelon " " Divisional Artillery.

The D.A.C. will be on the local Provisional Establishment, available from the Stationery Office. In view of the fact that the 3.7" Howitzers will be pack artillery, pending their arrival Nos. 1, 2 and 3 Sections, D.A.C., will all be similar to NO. 2 Section as therein laid down.

The 'B' Echelon modifications will be as follows :-
deduct -

1 Subaltern.	8 Gunners (5 native, 3 white).
1 Corporal.	24 Drivers (15 " , 9 ").
1 Bombardier.	42 Light Draught Horses.
1 Shoemsmith.	7 G.S. Wagons.

(Sd) A Repuden Bell

G.H.Q.
E.E.F.
6/8/17.

Major-General,
Chief of the General Staff,
Egyptian Expeditionary Force.

\$ D

PROGRAMME OF COMMANDER-IN-CHIEF'S VISIT TO
KANTARA AND ISMAILIA.

Monday
August 6th.
0700.

Leave CAIRO in Commander-in-Chief's coach.
Breakfast in the train.

1124

Arrive KANTARA WEST. Meet Brig-Gen. Broadbent,
and motor to Swing Bridge over Canal. Meet
horses which will be provided by Headquarters,
Palestine L. of C.
Ride round 1st Veterinary Hospital, Remount
Depot, Camel Remount Depot, Camel Veterinary
Hospital.
Return to H.Q., Palestine L. of C.

1530

Lunch, Headquarters, Palestine L. of C.

1415

Leave KANTARA EAST by car for ISMAILIA.

1550

Arrive Conte de Serionne's House.

1630

Leave Conte de Serionne's House by car for
presentation of Medals by General Bailloud to
7th Mounted Brigade at FERRY POST.

1645

Arrive Headquarters, 7th Mounted Brigade. Meet
Brig-Gen. Wigan. Meet horses provided by
Headquarters, 7th Mounted Brigade and ride to
parade ground north of old General Headquarters.
(Hospital at FERRY POST West Bank of Canal).
Inspect 7th Mounted Brigade, which will be drawn
up in mass forming three sides of a square.
After inspection medals will be presented by
General Bailloud. The Brigade will then
march past.

1755

Leave Parade Ground by car.

1900

Arrive Conte de Serionne's House.

Tuesday.
August 7th.
0950

Leave Conte De Serionne's House by car.

1000

Leave ISMAILIA in Commander-in-Chief's coach.
Lunch in the train.

1340

Arrive CAIRO.

Copies to:-

- A.D.C. to C-in-C. (2).
- D.A.G.
- D.S.Q.M.G.
- C.G.S.
- O(a).
- O(b).
- Q.
- D.R.
- D.V.S.
- H.Q., Palestine L. of C.
- Dist. Command. Kantara



SECRET

W.A.

84
SS 2/45

General Officer Commanding,
Southern Canal Section,

In view of the importance of preventing the passage of Enemy Agents from PALESTINE to EGYPT, the question of allotting additional Troops for Contre-espionage work in the SOUTHERN CANAL SECTION has been under consideration. It has however, been found impossible to provide any additional Troops for this purpose. Will you therefore please ensure that the greatest vigilance is maintained as regards sweeping and patrolling the "swept track" maintained along the East Bank of the Maritime Canal. The number of individuals reported as crossing this track is very small, but all ranks engaged in carrying out patrols on the East Bank should again be warned of the great importance of making this system of tracking and catching Enemy Agents as effective as possible.

(Sgd.) A Lynden Bell

G.H.Q., E.E.F.
9/8/17.

Major-General.
Chief of the General Staff.
Egyptian Expeditionary Force.

Copy to I(B)

W.D. 85 A

PROGRAMME OF COMMANDER-IN-CHIEF'S VISIT to ALEXANDRIA.

Friday,
Aug. 10th.

0715. Leave Cairo in C-in-C's Coach. Breakfast in train.

1106. Arrive Sidi Gaber. Proceed to Residency, and stay with High Commissioner.

Saturday,
Aug. 11th.

0841. Leave Sidi Gaber in C-in-C's Coach.

1135. Arrive Benha.

Leave Benha for Kantara. C-in-C's coach will be attached to the train by which remainder of G.H.Q. will travel. Lunch in train.

Arrive Kantara West. Cross the Canal.

Leave Kantara East in Coach, attached to G.H.Q. Train.

Sunday,
Aug. 12th.

Arrive Kilo. 207

All arrangements as regards motor cars at Alexandria and at Kantara (except for baggage) will be made by the A.D.C. to C-in-C.

* Detailed train timings from Benha onwards will be notified by 'Q' in due course.

Copies to :- A.D.C. to C-in-C.
C.G.S.
A.
Q.
I.
O(a).
O(b).
Gen. Clayton.

W.D.

56 A

G.S.485/2.

General Officer Commanding.

20th Corps.
21st Corps.
Desert Mounted Corps.

With a view to minimising the danger of infection from anti-gas appliances, the following procedure as regards use of helmets, etc. for drill purposes will be followed:-

(i). Units eventually to be equipped with 1 Small Box Respirator and 1 P.H. Helmet.

(a). Until Small Box Respirators are issued units should use as a drill helmet 1 P.H. helmet of the 2 now carried.

(b). When Small Box Respirators are issued the P.H. helmet now used as a drill helmet, together with the original 10% drill helmets, should be returned to Ordnance.

Little drill with helmet - approximately 10 minutes per week - will be necessary when Small Box Respirators have been issued. For this purpose the 1 P.H. helmet still retained may be used.

(ii). Units equipped with 2 P.H. helmets should use one of the 2 service helmets as a drill helmet, renewing the service helmet every 3 months.

(iii). Units equipped with 1 P.H. helmet, e.g. Camel Transport Corps, should carry 1 drill and 1 service P.H. helmet.

G.H.Q., E.E.F.
11th August 1917.

Major-General.
Chief of the General Staff.
Egyptian Expeditionary Force.

Copy to D.O.S.

To 1st Ech for signature - 11/8/17.

W.D.
SECRET

87

A

The Rear-Admiral.
Commander-in-Chief.
EAST INDIES STATION.

12th
10th August 1917.

Sir,

With reference to your No. 1170, dated August 4th 1917, I have the honour to inform you that I quite understand that the presence of a warship at AKABA is a temporary measure and that the resources at your disposal will not admit of one being stationed permanently at that place.

It is hoped, however, that when the transfer of the Base of the Arab Forces from WEJH to AKABA has been completed and when a military wireless station has been erected, the necessity of retaining a warship at AKABA will cease to exist.

I should be grateful if H.M.S. "HUMBER" could be permitted to remain at AKABA until the arrangements outlined above can be made.

I have the honour to be,

Sir,

Your obedient servant,

Frederick S. H. ...

General.
Commander-in-Chief.
Egyptian Expeditionary Force.

Copy to Arbur.
Arbur

88

SECRET

A. SECRET 88

From :- Chief, EGYPTFORCE

To :- Chief, LONDON

B.A. 104 cipher

13/8/17

Desp- 1515

Reference Troopers 39262 cipher O 1A.

I hope that it may be possible to expedite equipment and machines. It is important that by middle of September two new Squadrons should be in the Field. Can one flight of other up-to-date scouts be sent, as Bristol monoplanes will not be ready this month, because to deal with enemy's fast scouts I must have machines of this type.

Copies to :- O(a)
O(b)
G.G.S.
G.
R.F.C.

Filed :- G.S. 104/11
G.S. Cables
W.D.
C.O.



B

89

From : G.H.Q.

To : 20th Corps.
21st Corps.
Desocorps.
Defences, EL ARISH.
5th Wing, R.F.C.

Q.1.

18/8/17.

Dean, 2030.

5th Wing R.F.C. will send to G.H.Q. a copy of all wires sent to Middle East Brigade about reconnaissances and will amplify these wires when necessary by telephone, important information being reported to G.H.Q. immediately in all cases. Information will at once be wired by G.H.Q. to all concerned. 5th Wing will telephone to G.H.Q. every evening at 1815 a summary of the day's work, confirming by wire and, whenever important information has been gained, by letter. G.H.Q. will give orders direct to 5th Wing for a weekly programme of distant reconnaissances. Corps will let G.H.Q. know when they require any special reconnaissance, which will be ordered by G.H.Q. if possible. Tactical reconnaissance will be arranged direct between 5th Wing and Corps. In case of difficulty in carrying out tactical reconnaissance 5th Wing will refer to G.H.Q. Artillery work will be arranged direct between 5th Wing and Corps for the present. Photographic work will be arranged by G.H.Q. and the program notified to Corps who will let G.H.Q. know any special requirements. Addressed Corps, M.E. Brigade, Defences EL ARISH, 5th Wing.

Copies to :- O(a). Filed G.S.
 O(b). " G.S. Cables.
 C.G.S. W.D
 D.G.G.S.
 M.G.H.A.
 I.

G.O.C., 20th Corps
 " 21st "
 " Desert Mtd Corps
 " Pal:L of C.Defs
 Inspector Pal: L. of C.
 G.O.C., Southern Canal Sectn.
 " Delta & Western Force.
 " Alexandria District.

G.S/ 126 / A
 / B
 / C
 / D
 / E
 / F
 / G
 / H



A
 90

1. The issue of small arms ammunition, bombs and grenades on the following scale has been sanctioned for training purposes:-

S.A.A.

(i) For Vickers Guns.	Yearly issue	300 rounds per man forming part of the Gun Section.
(ii) Lewis & Hotchkiss Guns.	" "	100 " " " "
(iii) Rifles	" "	75 rounds per man armed with a rifle.
(iv) Stokes Guns.	" "	40 rounds (Dummy) per Battery.
	Monthly Issue	120 rounds per Bty with cartridges complete. 100 cartridges Green. 300 Ring Charges. 35 Cartridges Orange.
(v) Mills Rifle Grenades.	Monthly Issue	120 rds per Inf. Bde. 1000 cartridges per Infy Bde.
(vi) Mills Grenades.	" "	3000 per Inf. Bde. 1000 " Mtd. Bde. 1000 " I.C.C."

2. The above allowance will come into force from 12th August 1917.

3. With reference to para. 1(iii) it is not considered practicable to lay down a course of musketry that can be applied satisfactorily to all formations and it has therefore been left to the discretion of

- (a) G.O.C., Corps.
- (b) G.O.C., Districts (including Palestine L.of C.Defs)

to decide how the ammunition is to be expended.

4. Live grenades for training purposes will be issued by Ordnance on special indent. On no account should the Service supply of grenades be used for this purpose. Dummy grenades may be drawn up to 10 boxes per brigade.

F. Watson

Major-General,
 Chief of the General Staff,
 Egyptian Expeditionary Force.

Copy to 'a'
 G.H.Q., E.E.F.
 15th August 1917.

91 B

General Officer Commanding,
Southern Canal Section.



The Instructions contained in this office letter No. G.S. 606/1, dated 16/8/17, are cancelled.

The Artillery for the 75th Division will be organised at MOASCAR. It will consist of the following units, constituted as shown :-

37th Brigade, R.F.A.

- a. Brigade Headquarters of 146th Brigade, R.F.A.
- b. (389th Battery becomes A. Battery.
(390th " " B. "
- c. 1 Battery 4.5" Howitzers from home becomes C. Battery.

172nd Brigade, R.F.A.

- a. 172nd Brigade Headquarters.
- b. (391st Battery becomes A. Battery.
(392nd " " B. "
- c. 1 Battery 4.5" Howitzers from home becomes C. Battery.

* 1st South African Brigade, R.F.A.

- a. Its own Headquarters
- b. (1st Battery becomes A. Battery.
(2nd " " B. "

No howitzers at present.

* At present this brigade has three batteries of 4 guns each; these will be converted into two batteries of 6 guns, in accordance with instructions sent in this office No. G.S.606 of the 6th inst.

The War Establishment of Divisional Artillery Headquarters, Batteries, and Brigades, will be on Part VII W.E.

D.A.C. Commander - Lieut-Col. G.C. MAYALL, who will raise his own Headquarters from General Base Dep

No. 1 Section	found from	37th Brigade.
No. 2	"	" " " South African Brigade.
No. 3	"	" " " 172nd Brigade.
B. Echelon	"	" " " Divisional Artillery.

The D.A.S. will be on the local Provisional Establishment, available from the Stationery Office.

The portions required for 4.5-inch Howitzers will not be made up pending the arrival of these batteries which are bringing a proportion of their A.C. with them. 1, 2 and 3 Sections should therefore at present, be similar to No. 2 Section in the War Establishment.

Notification should be wired to this office when this unit is ready to receive its Indian personnel.

Ed. G. Dawney B.R.S.
for

G.H.Q., E.E.F.
15th August, 1917.

Major General,
Chief of the General Staff,
Egyptian Expeditionary Force.

Copies to :- A.
Q.
M.G.R.A.
A.M.S.

W.D.
The Commandant,

Branch School of Instruction,

EL ARISH.



The attached report has come unofficially into my hands. The programme should be revised so as to give very practical instruction in Trench warfare and in the list of subjects named. Can the size of the classes be reduced?

G.H.Q., E.H.F.
15th August, 1917.

Ad. O.C. Williams
for *Captn.*
Lieut. Colonel,
General Staff.

Copy to Imperial School of Instruction, ZEITOUN

Lieut. X, who attended the 1st Trench Warfare School at EL ARISH, has given me details of the instruction given at the School.

The course lasted for three weeks, and during that time only about 18 hours was spent in practical instruction in Trench Warfare. At least two hours per day were taken up with the lectures, the remaining time being devoted to Stokes Gun instruction.

The squad in which Lieut. X was, numbered 48, for which there was one instructor, assisted by 2 sergeants who were experts in Stokes Guns and Grenades.

The School received practical instruction in revetting trenches, siting tactical wire and fire trenches, and the carrying out of reliefs in the trenches. The size of the squad and the short time allowed for the practical work did not allow of each officer gaining experience by being in command of the party while the practices were being carried out.

No practical instruction was given in -

1. Sanitation.
2. Cooking.
3. Creating Dumps (both for holding trenches and for offensive action).
4. Attacks from a Trench against other trenches by
by Strong Points.
5. Co-operations between Infantry and Machine Guns and
Artillery.
6. Siting of Lewis and Machine Guns in Trenches.
7. Erection of Barricades or Blocks.

No lectures appear to have been delivered on the important subject of Interior Economy and care of men in the trenches.

The course would be of much greater benefit if the above subjects could be included.

W.D.
SECRET.

SECRET

G.S. 2/58.

95

A



General Officer Commanding,
Desert Mounted Corps.

With reference to your O/370/56 of August 13th, it is hardly possible to determine beforehand the action which might be taken in the circumstances to which you refer, since it is not possible to foresee what the situation would be should the case arise.

Should the enemy attempt, however, to enter the gap between KENT FORT and MENDUR, he would be unable to advance until he had widened the gap by taking one or other of those places. Should he attack MENDUR, the reserve division of the XXI Corps is immediately available. Should he attack your left, his open flanks should offer a great opportunity for the offensive action of the large body of mounted troops at your disposal, supported by the 60th Division.

An offensive by the enemy in this quarter would seem to offer him so small prospects that it is probable that it could be dealt with by your own Corps and the XXI Corps, without requiring the employment of other troops, which would be disposed as the particular circumstances might demand.

(Sd) *A. R. Bell*

G.H.Q.
E.E.F.
16/8/17.

Major-General,
Chief of the General Staff,
Egyptian Expeditionary Force.

WD
General Officer Commanding,
21st Corps.

96 B
With reference to your request that the 123rd Rifles now serving with the 234th Brigade, 75th Division should be exchanged for the 58th Rifles at present in the Southern Canal Section, owing to the difficulty of equipping the 58th Rifles and owing to the very great pressure which will be put upon the railway from KANTARA during the next few weeks, it has been decided that this transfer cannot be carried out at present.

The 58th Rifles could, moreover, only arrive immediately prior to operations and the incorporation of a new battalion in 234th Brigade at the last moment is not considered desirable.

Ed. A. G. Macdonald

G.H.Q.,
E.E.F.
18th August, 1917.

Major General,
Chief of the General Staff,
Egyptian Expeditionary Force.

MESSAGES AND SIGNALS.

No. of Message.....

Prefix.....	Code.....	m.	Words	Charge.	This message is on a/c of:	Reed. at.....
Office of Origin and Service Instructions			Sent			Service.
.....			At.....	m.	(Signature of "Franking Officer.")	From.....
.....			To.....			By.....
.....			By.....			

TO 20th Corps
 21st Corps
 Descorps.

Sender's Number. Day of Month. In reply to Number. A A A
 * 04A. 16/8/17

Situation report, including any information of enemy movements or other important intelligence and reports of any operations etc, which may have taken place during night, will be wired to General Staff, G.H.Q., daily at 0600 AAA similar situation report for day will be wired at 1800 AAA Any further details will be included in Intelligence summary ordered by my I 515 of to-day to be sent by evening D.R.L.S. AAA Summarised report on artillery work for 24 hours to 0600 will be sent to General Staff, G.H.Q. by evening D.R.L.S. daily AAA If difficulty should arise in collecting and summarising divisional artillery reports in time for despatch by evening D.R.L.S., copy of divisional reports may be sent in extenso AAA Artillery programme for following day when of any special interest will also be forwarded by evening D.R.L.S. AAA Brief outline of any projected minor operations should be forwarded by evening D.R.L.S. forty-eight hours before date of operation. Addressed 20th Corps, 21st Corps and Descorps.

From G.H.Q.?
 Place 1930
 Time June

The above may be forwarded as now corrected. (Z) Lt. Col., G.S.
 Censor. Signature of Addressor or person authorised to telegraph in his name.

* This line should be erased if not required.
 (S.O. 1019). Wt. W 8148/M 701 50,000 Pads. 8/16. M.C. & Co., Ltd., London.

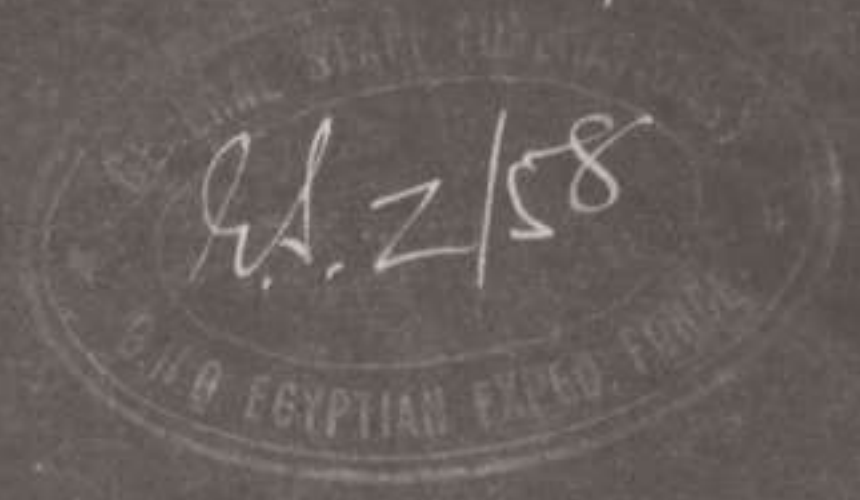
99

SECRET

W.D.

98 D

General Officer Commanding,
21st Corps.



The attached copy of a letter despatched to the Rear-Admiral, EGYPT, is forwarded for your information.

It is understood that all previous correspondence on this subject is now at your disposal from documents received from Headquarters, Eastern Force.

Should the Rear-Admiral agree to the proposals contained in this letter (of which you will be informed) you should be prepared to carry out the raid at an early date.

(copy left away by MG)

G.H.Q., E.E.F.
15th August, 1917.

16

Major General,
Chief of the General Staff,
Egyptian Expeditionary Force.

W.D.
Rear-Admiral,

EGYPT.

16th August, 1917.

Sir,

With reference to a letter forwarded to you on the 30th July by the General Officer Commanding, Eastern Force, in connection with a proposed joint raid by a Naval and Military raiding party, to be undertaken north of GAZA, I should be glad if you could provide the necessary personnel and material shown in paras. (c) 1, 2, 3 and 5 of the above quoted letter.

Should you agree, I would suggest that Commander Crocker should communicate direct with General Officer Commanding, 21st Corps, to whom a copy of this letter is being sent, and that all subsequent arrangements for the carrying out of the raid should be made between these two officers in consultation.

I have the honour to be,

Sir,

Your obedient Servant,

(sgd) G.P.Dawnay, B.G.G.S. for

General,
Commander-in-Chief,
Egyptian Expeditionary Force.

O(a).
O(b).
I.(Pal.sub-sect.)

WD 100 B
NO. 20763
Date

1. The work of the General Staff office will, in future, be handled as follows :-

In the absence of the C.G.S. I am to represent him in all matters. Otherwise I shall be solely concerned with the PALESTINE theatre, with regard to which the C.G.S. wishes me to deal with and to collate the General Staff work for presentation to him in such a form that he may, so far as possible be spared concern with details, and may be freed to deal with major matters as a whole after preliminary detail work has been dealt with.

2. As regards the various branches, therefore, the procedure will be as follows :-

O(a), O(b) and 'I' will deal direct with the C.G.S. in all matters which relate to ARABIA, WESTERN EGYPT, the DELTA, the SUEZ Canal, etc; also in all matters relating to SINAI, except where the question is one which directly concerns the PALESTINE theatre, (e.g. movements of troops for the force in PALESTINE along the L. of G., etc.); also in all matters relating to ARABIA, except any questions which may arise concerning direct co-operation by Arab forces in the PALESTINE theatre.

3. On the other hand, all papers and matters -

- (a) directly concerning the PALESTINE operations - O(a).
- (b) staff duties and training questions concerning the forces operating in the PALESTINE theatre - O(b).
- (c) tactical and strategical intelligence, and matters relating to reconnaissance of all kinds, maps, air photography, etc., in the PALESTINE theatre - I(Pal.).

will be brought in the first place to me.

101

4. There must be a regular system by which at least one General Staff Officer from O(a), O(b), or I(Pal.) must be out every day with one or other of the Corps in front line. The officers in charge of the three sub-sections will arrange this between themselves in such a way as to ensure that the various formations and all parts of the PALESTINE front are visited and kept in touch with.

5. I propose to institute a conference of the three sub-sections, to be held in my room immediately after the G.G.S.'s conference every morning.

(Ind.) G.P.P.

17/8/17.

B.G.G.S.

E

G.S. 550

MD

< General Officer Commanding,



Since it has been necessary to reduce the number of riding horses allotted to officers of mounted regiments to two, it is proposed, as far as possible, to issue for the use of batmen one donkey per officer (the quartermaster and attached officers excepted) with saddlery of Egyptian pattern. This will enable the officer's second horse to be led. As soon as animals and saddlery are available in sufficient numbers a notification will be published in General Routine Orders.

(Sd) A Lynden Bell

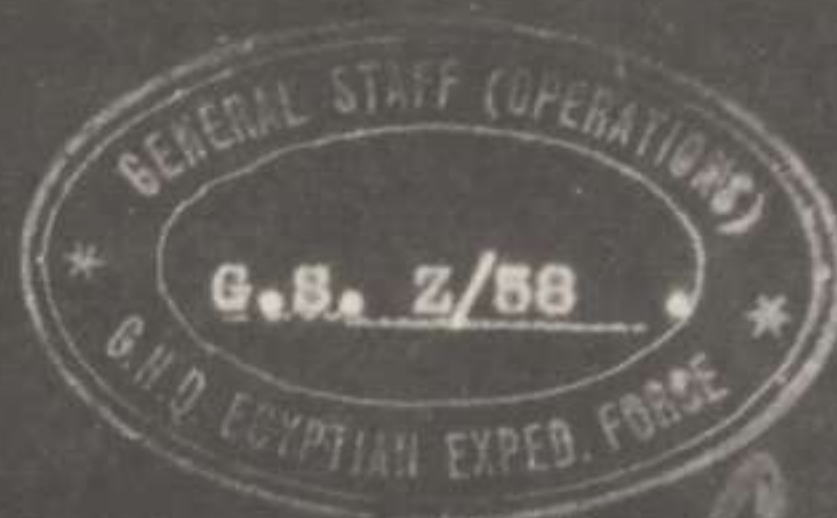
G.H.Q., E.E.F.
16th August, 1917.

Major General,
Chief of the General Staff,
Egyptian Expeditionary Force.

Addressed :- G.O.C. Desert Mounted Corps
" " 7th Mounted Brigade.

Copies to :- Q(2)

SECRET



General Officer Commanding,
Desert Mounted Corps.

The Commander-in-Chief directs me to return the accompanying report of the operations of Australian and New Zealand troops during the first Battle of GAZA and to say that the official report on these operations is now in the hands of the War Office.

Sir Edmund has therefore decided that your report must go to the War Office for decision as to whether there is any objection to its publication in Australia before the official report is issued. Before, however, sending your report to the War Office, he wishes all commendations of the action of individuals to be deleted from it, as the list of officers recommended for good service in connection with these operations has been submitted with the official despatch.

Will you kindly make the necessary amendments and return the report to me ?

(Sgd.) A. Lynden Bell

G.H.Q.
E.E.F.
17/8/17.

Major-General,
Chief of the General Staff,
Egyptian Expeditionary Force.

General Officer Commanding,
Palestine L. of C. Defences.

20.661. 103
A

In confirmation of this office No. Ca.495, of to-day, a force of Arab Scouts, raised in the SOUDAN for service in SINAI and PALESTINE, will arrive at KANTARA on the 19th inst. and will be allotted as L. of C. Defence Troops.

Abd el Azim Bey Khalifa, Nazir of ABASSA tribe of the BERBER Province, has recruited this force and will be in command. He is a man of proved loyalty, and he and his tribe furnished similar bodies of troops in the campaigns of 1895 - 1898 in the SOUDAN.

Colonel Butler will accompany the force as Liaison Officer, and all orders and instructions to Abd el Azim will be given through and in consultation with this officer.

You should forward to this office, as soon as possible, a report on this force, and how you propose to employ it.

A copy of this letter is being forwarded to Colonel Butler, who will supply any further information concerning the Arab Scouts which you may require.

Ch. Jk. Belgrave
for Col. G.

G.H.Q.
E.E.F.
18/8/17.

Major-General,
Chief of the General Staff,
Egyptian Expeditionary Force.

Copy to Col. Butler.

General Officer Commanding,
31 Corps

4.765-

104 B

The question has arisen as to the best means of employment of the Divisional Cyclist Companies.

The 52nd, 53rd and 54th Divisions only have got Cyclist Companies. That of the 54th Division is employed on the Canal and cannot be taken away; there is thus one Company per Corps. The 52nd Divisional Company has been attached to a Battalion for some time and the arrangement appears to have worked well.

One proposal is to employ the Company as Corps troops to be used for guards over stores, dumps, etc., for fatigues, for assistants to Assistant Provost Marshal and for other various duties for which infantry may at present be employed. The second proposal is to use them as drafts to reinforce weak battalions and so strengthen the number of rifles available.

The latter might interfere with their establishment as a unit, which might be undesirable, since later on the country might allow of them again being employed as cyclists.

Will you please put forward your proposals. They must be based on the assumption that no transport is available for the Companies as a separate unit. An early reply is requested.

*Per B. L. Watson
for J. H. G. G. G.*

G.H.Q., E.E.F.
18th August, 1917.
18th

Major General,
Chief of the General Staff,
Egyptian Expeditionary Force.

Addressed :- 20th Corps
21st Corps.

105

W.D.

G.S. 710.

105 C

General Officer Commanding,

A. I. F. In EGYPT.

Owing to the large number of semi-permanent lines now required in the Field, difficulty is being found in providing enough airline parties for all Corps. It would be of great assistance if an airline section for Corps troops could be raised from Australian personnel. If you concur in this suggestion, would you please obtain the sanction of the Australian Government for the formation of this unit? A copy of the establishment (Part XI) is attached hereto.

G. H. Q., E. E. F.
18/8/17.

Ra. B. Watson
Jr. G. G. G.
 Major-General.
 Chief of the General Staff.
 Egyptian Expeditionary Force.

AIR-LINE SECTION (HORSE TRANSPORT).

106

War Establishment.

(i) Personnel and Horses.

D E T A I L	PERSONNEL				HORSES			Bicycles	REMARKS.
	Officers	S. Sergts & Sergts.	Artificers	Rank & File	Total	Riding	Draught		
Subaltern	1	2	1	1	1	1	1	1	
Sergeants	1	2	1	1	2	2	1	1	
Shoeing and carriage-smith.	1	1	1	1	1	1	1	1	
Corporals	1	1	1	2	2	2	1	1	
2nd Corporals	1	1	1	2	2	2	1	1	
Sappers & pioneers... (for vehicles	1	1	1	35	35	35	35	35	
Drivers (for spare horses	1	1	1	16	16	16	16	16	
(spare	1	1	1	2	2	2	2	2	
Batmen	1	1	1	1	1	1	1	1	
Total section (a)	1	2	1	57	61	12	35	47	1

(ii) Transport.

Detail.	Vehicles	Drivers	Draught Horses	Remarks.
Bicycle	1	1	1	
air-line { 6-horsed	2	6	12	
	2	4	8	
Wagons { cable	1	3	6	
	1	2	4	
	1	1	2	
Drivers for spare draught horses.	-	2	3	
Total	8	18	35	

(a) Two men are trained in sanitary duties.
 Note - The above establishment includes 5 lance-corporals.

DETAIL OF RANK AND FILE BY TRADES.

Blacksmith	1	Wheeler and carpenter	1
Instrument repairer	1	Fitter and turner	1
Pioneers	8	Drivers and batmen	20
(field line	11	Shoeing and carriage-smith	1
Telegraphists, (permanent			
{ line	6		
{ office	8		
		Total	55

WAD
General Officer Commanding,

The following organisation for the supply of spare parts and for the renewal of anti-gas appliances has been approved and will be put into force forthwith.

ORGANISATION FOR THE SUPPLY OF SPARE PARTS AND FOR THE RENEWAL OF ANTI-GAS APPLIANCES.

1. Divisional reserve. To be held by R.A.D's, O.S.

Small box Respirators.

Anti-gas appliances to be held by R.A.D's, O.S. :-
500 complete small box respirators - 10% size 3
80% size 3
10% size 4

500 of each of the spare parts of the small box respirator including spare boxes.

Supplies of :- rubber solution.
rubber tape.
copper wire.
whip-cord.
 $\frac{1}{2}$ -inch black elastic.
 $\frac{1}{2}$ -inch tape.

P. H. Helmets.

1000 eyepieces.

500 each, breathing tubes, complete with rubber tooth grip and valves.

Supplies of rubber solution, rubber tape and safety pins.

This is in addition to the small fluctuating supplies of these articles which may be demanded for Divisional Gas School use as laid down in G.S. 581. 6/1 of 3/5/17.

2. Corps and Army Reserve.

At the Headquarters of these respective units, for Corps and Army troops, quantities same as above.

3. Base Ordnance.

Small Box Respirators.

Not less than 10,000 complete small box respirators.

10,000 each of all spare parts.

Supplies of :- Rubber solution.
rubber tape.
copper wire.
whip-cord.
 $\frac{1}{2}$ -inch black elastic.
 $\frac{1}{2}$ -inch tape.

The percentage of face sizes of the small box respirators held at the Base should be :- size 1. 1%
size 2. 16%
size 3. 75%
size 4. 8%

and 50% size 5 to be issued to Divisional Gas Officers through the Deputy Assistant Director of Ordnance Services of their Divisions on special indent.

P. H. Helmets.

10,000 each of eyepieces, breathing tubes and valves. Supplies of rubber solution, rubber tape and safety pins.

4. Supply of P. H. Helmets.

Field Reserve of P. H. Helmets at KANTARA to be not less than 10,000.

5. Base Reserve of P. H. Helmets at ALEXANDRIA.

The Base Reserve of P. H. Helmets should not be less than 150,000.

6. Repairs.

(i) Temporary and small repairs should be effected by the man under the supervision of the trained officer and H.C.O. of his Company, Battery etc., e.g. temporary repairs as necessitated by tears in the face-pieces, renewal of broken tapes and elastic.

(ii) Damaged boxes or damaged valves should be replaced by the Company, etc., Gas H.C.O.'s under the supervision of the trained officer of the Company (assisted, if necessary, by Brigade Gas H.C.O.'s or Divisional Gas H.C.O.'s under supervision of Divisional Gas Officer.)

(iii) A new complete respirator should only be issued on occasions of urgency or, when the box respirator already in possession of the man is so seriously damaged that repair in the field is impossible. Responsibility for making the decision as to the necessity for this rests upon the Company Commander.

Ps. G. H. Watson
Lt Col Ed

G.H.Q., E.H.E.
15th August, 1917.

Major General,
Chief of the General Staff,
Egyptian Expeditionary Force.

18

Addressed :- G.O.C. 20th Corps
" 21st Corps //
Inspector Desert Mounted Corps / 2
Q.

W.P.
SECRET

General Officer Commanding,



The following programme of reconnaissances will be carried out by the Royal Flying Corps during the week commencing 19th August :-

August 19th	Northern area	(N. HAREIRA)
August 20th	Southern area	(SABA)
August 21st	Northern area	(HEIRA)
August 22nd	Northern area	(N. HAREIRA)
August 23rd	Southern area	(SABA)
August 24th	Northern area	(HEIRA)
August 25th	Southern area	(SABA)

(Sgd.) J. Hawkesley
Capt. G.S.

G.S. Co., E.E.F.
19th August, 1917.

for Major General,
Chief of the General Staff,
Egyptian Expeditionary Force.

3 copies to :- XX Corps
XXI Corps
Desert Mounted Corps.

MM

GENERAL STAFF COOPERATION
No. 90757
Date _____
6th DIVISION EGYPTIAN EXPED. FORCE
110
B

General Officer Commanding,

20th, 21st, and Desert Mounted Corps.

1. The following instruction with regard to the attachment of officers to staffs for training supersedes all previous instructions issued on the subject.

2. In each Corps selected officers will be attached to the staffs of Infantry and Mounted Brigades for one month.

It must be made clear to the Commanding Officers of units how essential it is to the interests of the Force as a whole, and to their own interests, that the most suitable officers should be made available, even though the interests of the unit are thereby prejudiced temporarily.

Very young officers should not be selected.

As far as possible an officer should be attached to the headquarters of the brigade to which he belongs.

3. At the end of a month's attachment the Brigade Commander will report through the usual channels to the headquarters of the Corps concerned whether the officer should be put through a further course of instruction or should be returned to regimental duty.

4. In the case of officers reported on as suitable for a further course of instruction, arrangements will be made at Corps and Divisional headquarters to train as many of these officers as they can cope with simultaneously.

The course of instruction held at Corps and Divisional headquarters will be carried out on the following lines :-

10 days in a G.S. office, during which period the officer will remain in close touch with a junior G.S. officer and will endeavour to gain a knowledge of his work both in the office and out of doors.

At least 2 of these 10 days should be spent in studying Intelligence duties.

10 days in an A. and Q. office, studying both A. and Q. work.

20 days attachment to two arms of the Service other than his own.

111

10 days in a G.S. office, during which period the officer will work in close touch with a junior staff officer, but will be given such work to do on his own account as opportunity offers.

10 days in an A. and Q. office doing such A. and Q. work as opportunity offers.

10 days - The officer will officiate in a junior staff appointment of the kind for which he is considered most fitted, in the place of an officer temporarily absent from any cause.

A report on the officer will be furnished by the Commander under whom he serves, to the headquarters responsible for the whole course of instruction.

5. On the termination of the whole course of instruction the officer will rejoin his unit and a brief report on him will be forwarded to ^{and} General Headquarters, stating the appointment for which he is considered most suitable.

The opinion of the Commander under whom he has served when officiating for an absent officer, should be embodied in this report.

If at any period during the course of instruction it becomes clear that the officer is unlikely to become fitted for employment on the staff, a report should be rendered to General Headquarters and he should immediately be sent back to his unit.

6. As officers attached to brigade ~~staffs~~ are passed out for further instruction or for return to regimental duty, they will be replaced at brigade headquarters by other officers under arrangements to be made by the Corps concerned.

7. The attachment of regimental officers to the staff for instruction is to be strictly limited to those officers who are attached under the provisions of this memorandum or under other authority from General Headquarters.

Only one officer will be attached to each brigade headquarters at a time.

8. With regard to officers at present undergoing instructional attachment, all those attached to staffs other than

112

brigade staffs will be returned to their units whenever they have completed two months attachment in all, and on the conclusion of their attachment a report on their capabilities will be forwarded to General Headquarters, the appointment for which they are considered suitable being stated.

All officers attached to brigade staffs who have already completed one month's attachment will either be sent on for a further course of instruction with a higher staff, in accordance with para. 4. above, or will be returned to their units.

All officers attached to brigade staffs who have not yet completed one month's attachment will be dealt with in accordance with the provisions of para. 3. above.

(Sd) A. Reynolds Bell.

G. H. Q., E. E. F.
17/8/17.

Major-General.
Chief of the General Staff.
Egyptian Expeditionary Force.

Copy to AMS

G.S. 488/2

W.D.
Headquarters,
21st Corps. *17*
Desert Mounted Corps. *16*

I.P.L. of C. *15*
P.L. of C.D. *14*
ALEX. D. *13*

CB

The attached copy of a memorandum showing the Standard Test for anti Gas Training of drafts is forwarded for your information.

Copies of this are being printed and will shortly be issued to all concerned.

G.H.Q., F.E.F.
19th August, 1917.

sa. Installation
for Maj. G.S.
Lieut. Colonel,
General Staff.



STANDARD TEST

for

ANTI-GAS TRAINING OF DRAFTS.

GENERAL HEADQUARTERS, AUSTRALIAN INFANTRY BATTALIONS

The following standard test will be adopted for all drafts joining units. Men who fail in this test will be regarded as inefficient and receive further training until able to pass. It represents the minimum proficiency which should be expected of the individual man before collective gas training of the unit can be started.

Standard Test.

Small Box Respirator.

- 1. Complete adjustment from the "Alert" position. 4 secs.
- 2. Complete protection from the "Slung" position. 6 "
- 3. Change from Small Box Respirator to "safety-grip" with P.H. helmet. 10 "
- 4. Wearing continuously, including movement, for half-an-hour.

P.H. Helmet.

- 5. From "Slung" position to "Safety-grip" 6 secs.
- 6. From "Slung" position to complete adjustment. 20 secs.
- 7. Passing through gas successfully.

It is notified for information that reinforcements from ENGLAND who have reached above standard of anti-gas training will be found to have the entry "P.T.G." in their pay-books.

General Staff (Operations).
General Headquarters.
E. E. F.

19th August 1917.

General Officer Commanding,
20th Corps.*
21st Corps ϕ /

G.S. 619/4

115
A

At the Conference held at General Headquarters today it was decided that Senior Officers from Divisions under your command as below should proceed to EL ARISH on Wednesday 22nd and witness a demonstration of the work carried on at the Snipers School on Thursday 23rd, returning to their units on 24th.

20th Corps *

21st Corps ϕ

53rd Division 3 officers
60th " 3 "

52nd Division 4 offs
54th " 3 or 4 "
75th " 5 "

Officers should travel to EL ARISH by the train leaving BELAH at 1710. Transport to meet this train will be arranged by the Commandant, Branch School.

A. G. F. Watson
Major-General,

G.H.Q., E.E.F.
20th August 1917.

Chief of the General Staff,
Egyptian Expeditionary Force.

Copy to Commdt., EL ARISH (Branch School).

116 *Q*

THE FOLLOWING POINTS WERE DISCUSSED AT THE C.G.S.'s CONFERENCE HELD AT G.H.Q. ON AUGUST 30TH, AND THE FOLLOWING RECOMMENDATIONS ARE APPROVED BY THE COMMANDER-IN-CHIEF.

TRAINING.

That it is unnecessary to issue instructions from G.H.Q. as to the Training of Divisions for Offensive Action. The principles in P.S. Regulations Part 1, and in the various training pamphlets, are a sufficient guide, and should be read in conjunction with one another.

The number of officers and men to be left out of an attack in this theatre may be left to the discretion of the Corps Commanders. They should adhere as closely as possible to the numbers laid down on page 58 of "Instructions for the Training of Divisions for Offensive Action"

STOKES GUNS.

Each Division of the XXth Corps will have two batteries complete, the transport and personnel of the third battery will be used to transport ammunition for the other two batteries. Camels for transport at the rate of 40 per Battery will be allotted from the Camel Transport Corps/^{Company} allotted for Divisional 1st-Line Transport. Instructions for the XXIst Corps will be issued later.

MACHINE Gun SQUADRONS.

The existing alternative modes of transport will not be interfered with. Consequently the Squadron will carry their full complement of S.A.A.

LEWIS GUNS.

(a) That owing to the invariable wastage of ammunition, these guns should rarely be fired at ranges over 600 yards.

(b) That it is unnecessary to issue instructions regarding the duties of Battalion Lewis Gun Officers.

DIVISIONAL
M.G. OFFICER.

That there is no objection to officers being employed unofficially as Divisional Machine Gun Officers, but their position will not entitle them to extra pay or rank.

GAS N.C.O's

That, owing to the importance of Training all ranks in Anti-Gas measures, the Company Gas N.C.O's should remain with Company Headquarters and not be detailed for ordinary Company duties to the prejudice of their Gas duties.

SCHOOLS.

Divisional and Brigade Commanders and their Staffs will arrange to visit occasionally the Schools of Instruction, and offer advice as to the training carried on at the Establishment.

CONTACT
AEROPLANE
PATROL.

The Royal Flying Corps will arrange to give instruction to each Division in Contact Patrol Work.

MAPS.

(a) The following will be taken into permanent use as soon as they are issued :-

1 inch. 1/20,000. 1/250,000

(b) The following maps will be used temporarily until they are cancelled:-

1/10-000. 1/40,000 1/250,000

118 A

G.S. 730

General Officer Commanding,

XXth Corps
XXIst Corps
Desert Mounted Corps.

The Commander-in-Chief has decided that the Divisional Cavalry Squadrons of Divisions in the XXth and XXIst Corps shall be organised into two Corps Cavalry Regiments.

The Westminster Dragoons consisting of Headquarters and three Squadrons will form the Corps Regiment of the XXth Corps; the Squadron at present at the MILITARY School of Instruction 1 - now being relieved by a Squadron of Scots Yeomanry which has recently arrived from FRANCE, and will join the XXth Corps on relief.

The Corps Regiment of the XXIst Corps will be a composite Regiment consisting of :-

- Headquarters (not yet formed)
- 1 Squadron Scots Yeomanry (24th Divisional Squadron)
- 1 Squadron Glasgow Yeomanry (22nd Divisional Squadron)
- 1 Squadron Duke of Lancaster's Own Yeomanry (23rd Divisional Squadron)

Although no orders for the organisation of the above Corps Cavalry Regiments have been issued yet, as War Office authority for the formation of the Headquarters of the XXIst Corps ^{Regiment} is still awaited, Corps Commanders should concentrate the Squadrons of their Corps Regiments as soon as is convenient.

Ca J.D. Belgrave
for J.H. Collyer

Major-General,
Chief of the General Staff,
Egyptian Expeditionary Force.

G.S.O.,
21/8/17.

Copies to :- A.
Q.
A.M.S.

120
General Officer Commanding,

G.S. 552/5

119

B

XXth Corps
XXIst Corps
Desert Mounted Corps.

It has been decided that the duties of a Corps
Machine Gun Officer shall be as follows :-

(A) TRAINING.

To assist in the tactical training of Machine Gun
Corps Units when not actually in the line and to visit
Machine Gun Corps units in the line.

(B) OPERATIONS.

To assist Divisional and Brigade Commanders, when
required, in matters connected with machine guns and their
employment in offensive and defensive operations, and to
co-ordinate the work of Machine Gun Corps units in the line
and ensure co-ordination in the machine gun defence of the
flanks of Brigades and Divisions.

(C) ADMINISTRATION.

To watch the special interests of the Machine Gun
Corps personnel and advise the Administrative Staffs of
Divisions on the following questions :-

- (i) Promotion of officers.
- (ii) Selection of officers for appointment to the
Machine Gun Corps.
- (iii) Selection of other ranks for appointment to the
Cadet Battalions of the Machine Gun Corps.

Pa. C. F. Watson
Lt Col. Gen.
for

Major General,
Chief of the General Staff,
Egyptian Expeditionary Force.

G.S.Q., E.E.F.
31st August, 1917.

General Officer Commanding,
 Palestine L. of C. Defences.

It has been suggested that, in order to free men from Kite Balloon Sections for transfer to Infantry, detachments of trained native troops shall be employed as Balloon Parties in Kite Balloon Sections. Personnel of these parties require to be men of good physique and strict discipline, as physical strength, rapidity and coolness under shell fire are essential for the successful handling of balloons.

It is suggested that a detachment drawn from one of the battalions of the Egyptian Army now under your command would be very suitable for this service. Will you please say whether you consider that you can spare a detachment of approximately 70 men with a British Officer, to be employed as above. The British Officer selected to command the party should, if possible, hold a rank not higher than that of Captain in the British Army, as he will be required to work under the Officer Commanding Kite Balloon Section, who holds the rank of Captain.

Yours faithfully,
 A. L. Lyman Bee

G.H.Q., E.E.F.
 16/8/17.

22

Major-General.
 Chief of the General Staff.
 Egyptian Expeditionary Force.

General Officer Commanding,
Alexandria District.

As soon as their equipment has been overhauled and any necessary repairs thereto carried out, the 366th Battery, R.F.A., will move to PALESTINE Front and become 'B' Battery, 268th Brigade, R.F.A., 74th Division. The battery will be on War Establishment, Part VII, page 65. 18 ammunition wagons should accompany the battery.

The following additional personnel and animals should accompany the battery to form the necessary increases to the D.A.C., vide notes (n) and (o) on pages 6 and 7 of the Provisional War Establishment of a Divisional Ammunition Column, dated June, 1917.

(a) For No. 3 Section, 'A' Echelon -

- 1 Sergeant.
- 1 Shoeing Smith.
- 6 Gunners.
- 18 Drivers.
- 1 Batman.
- 3 Riding Horses.
- 36 Draught Horses or Mules.

(b) For 'B' Echelon -

- 2 Gunners.
- 3 Drivers.
- 6 Draught Horses or Mules.

Will you please inform me as soon as this battery is ready to move.

cc. J.D. Belgrave
J. H. H. H.

G.H.Q.
E.E.F.
22/8/17.

Major-General,
Chief of the General Staff,
Egyptian Expeditionary Force.

SECRET

G.S. 629.

122 A

General Officer Commanding,

XXIst Corps.
XXIst Corps.



The following re-allotment of heavy batteries to Heavy Artillery Groups will be notified in a Force Order which will be published at an early date :-

XXth Corps.

96th Heavy Artillery Group -

16th Heavy Battery	-	4	60-pdrs.
91st Heavy Battery	-	4	60-pdrs.
378th Siege Battery	-	4	6-inch Howrs.
383rd Siege Battery	--	4	6-inch Howrs.

XXIst Corps.

97th Heavy Artillery Group -

199th Heavy Battery	-	4	60-pdrs.
195th Heavy Battery	-	4	60-pdrs.
300th Siege Battery	-	2	8-inch, 2 6-inch How.
379th Siege Battery	-	4	6-inch howrs.
380th Siege Battery	-	4	6-inch howrs.

100th Heavy Artillery Group -

10th Heavy Battery	-	4	60-pdrs.
202nd Heavy Battery	-	4	60-pdrs.
201st Siege Battery	-	(2)	8-inch howrs.
		(2)	6-inch "
209th Siege Battery	-	4	6-inch howrs.
203rd Siege Battery	-	4	6-inch howrs.

With reference to this redistribution, it has been decided that instead of having 4 60-pdr. batteries, each half horsed and half mechanical transport, two batteries shall be fully horsed and the other two complete with mechanical transport. Arrangements should therefore be made at once to withdraw the horses and drivers from the 10th and 195th Heavy Batteries and hand them over to the 15th and 91st Heavy Batteries respectively. These latter batteries should simply transfer their sections of motor transport, personnel and mechanical transport, to the former.

The General Officers Commanding XXth and XXIst Corps will arrange this transfer in consultation. The resulting

/ establishments

establishments will be as on War Establishment, Part VII,
page 79, and Part XI, No. 554 Special.

A report should be rendered to this office when this
transfer has been effected.

(Ed) J.F. Pedgrave
Lt Col

G.H.Q.
25/8/17.

J.F.
Major-General,
Chief of the General Staff,
Egyptian Expeditionary Force.

Copies to :- M.G.R.A.
Q.
D.S.T.

SECRET.

124 A
41
Copy No.

FORCE ORDER No. 48.

by

GENERAL SIR EDMUND ALLENBY, K.C.B.

Commander-in-Chief, Egyptian Expeditionary Force.

GENERAL HEADQUARTERS,

27th August, 1917.

1. Under War Office authority (telegram No. 38656 cipher S.D.2, dated 28/7/17) "V" Corps Signal Company is formed as from 28/7/17 and is allotted to XIIIth Corps.
2. 1st South African Field Artillery Brigade is incorporated in the Egyptian Expeditionary Force as from 28/7/17 and is allotted to the 75th Division.
3. 172nd Brigade, R.F.A., is incorporated in the Egyptian Expeditionary Force as from 28/7/17 and will be reorganised into two Brigades of two batteries each. These Brigades will be called 37th Brigade, R.F.A., and 172nd Brigade, R.F.A., and are allotted to the 75th Division.
4. 'C' Troop, Australian & New Zealand Mounted Divisional Signal Squadron (Desert Mounted Corps) will in future be known as the Australian Pack Wireless Section.
5. The following are re-allotted as General Headquarters Troops (Force Order No. 47 being amended accordingly), but will remain attached to the Corps under which they are at present serving :-
 - 7th Mounted Brigade (complete with attached troops).
 - Imperial Camel Brigade (complete with attached troops).
 - 1/18th Pioneer Battalion, Leicestershire Regiment.
 - 1/23rd Battalion, 4th Pioneer.
 - 2/23rd Battalion, 5th Pioneer.
 - No. 66 Casualty Clearing Section.
 - No. 2 Bacteriological Laboratory.
 - No. 85 Army Troops Company, R.E.
6. The following is allotted Desert Corps Troops :-
 - 6th Reserve Field Ambulance and Workshop Unit.

7. The

7. The batteries comprising Heavy Artillery Groups are re-allotted as under :-

96th Heavy Artillery Group:-

15th Heavy Battery.
91st Heavy Battery.
378th Siege Battery (4 - 6" howrs.).
383rd Siege Battery (4 - 6" howrs.).

97th Heavy Artillery Group:-

189th Heavy Battery.
195th Heavy Battery.
300th Siege Battery (2 - 8" howrs. & 2 - 6" howrs.).
379th Siege Battery (4 - 6" howrs.).
380th Siege Battery (4 - 6" howrs.).

100th Heavy Artillery Group:-

10th Heavy Battery.
302nd Heavy Battery.
201st Siege Battery (2 - 8" howrs. & 2 - 6" howrs.).
209th Siege Battery (4 - 6" howrs.).
292nd Siege Battery (2 - 6" howrs.).

Edwards
Major-General,
Chief of the General Staff,
Egyptian Expeditionary Force.

Issued to :-

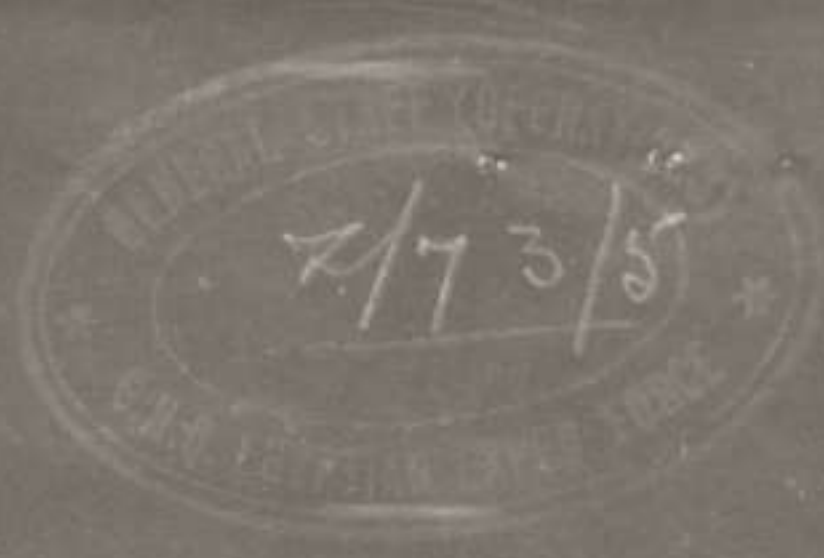
Copy No.

1. C-in-C.	22. Chemical Adviser.
2. C.G.S.	23. A.A.G., 2nd Ech.
3. "O".	24. A.Q.M.G., 2nd Ech.
4. "I".	25. A.A.G., 3rd Ech.
5. "A".	26. D.O.B.D., Alexandria.
6. "Q".	27. G.O.C., XXth Corps.
7. M.G.R.A.	28. " XXIst "
8. E-in-C.	29. " Desert Mtd. Corps.
9. D.A.S.	30. " D. & W. Force.
10. A.M.S.	31. " Southern Canal Sect.
11. D.S.T.	32. " M.E.B., R.F.C.
12. D.O.S.	33. " Alexandria Dist.
13. D.M.S.	34. " Palestine L. of C. D.
14. D.V.S.	35. Insp., Palestine L. of C.
15. D.R.	36. O.C., Admin. Centre, I.C.O.
16. D. of W.	37. O.C., A. & N.Z. Trg. Depot.
17. D.A.P.S.	38. Commdt., Zeitoun School.
18. Provost Marshal.	39. Rear-Admiral, EGYPT.
19. Commd. Paymr.	40. G.S.O.1, Naval, Ismailia.
20. Princ. Chaplain.	41. W.D.
21. D.R.T.	

175

175
B

W.D.



General Officer Commanding,
 XXth Corps.
 XXIst Corps.
 Desert Mounted Corps.

From the 1st September the northern boundary of the Cordon round KHANYUNUS will be withdrawn to a line running approximately through the point of the "A" in BEIR BELAH, through Kilo. 213 and then diagonally through square V.28 to the western boundary. (Reference map 1/40,000.)

From the same date the road from the S.W. entering KHAN YUNUS at Kilo. 210 on the railway will be closed and all troops marching from RAFA on the south or BEIR EL BELAH on the north will pass outside the Cordon on the south and east. There will be no direct traffic through KHAN YUNUS, and troops entering the restricted area will do so only by the BEIR EL BELAH - KHAN YUNUS road lying immediately west of KHAN YUNUS Station.

(Sgd) J.D. Belgrave
Rt Col.

G.H.Q., E.E.F.
 27th August 1917.

Major-General.
 Chief of the General Staff.
 Egyptian Expeditionary Force.

Copies to:-
 G.O.C. Palestine L. of C. Defences.
 Inspector, Palestine L. of C.

SECRET.

126 B

CHIEF of the GENERAL STAFF,
GENERAL HEADQUARTERS.

With reference to para.B of your G.S.Z/77 dated 16th August 1917, the following statement of requirements is put forward to enable the necessary preliminaries to be put in hand.

1-. Decauville from GAMLI to EL KHASIF.

A complete scheme has been forwarded by C.E., Desert Mounted Corps showing the material, labour and transport required. It is merely necessary to recapitulate the requirements in labour and transport which are as follows:-

2/23rd Sikh Pioneers.
Pioneer Battalion of 60th Division (less 1 Company).
18 tractors with box trailers and G.S. wagons.
This allows two extra tractors in case of a break-down which might delay the completion of this essential service.

It is clearly understood that XXth Corps will be responsible for all arrangements with regard to the actual laying of the decauville, although work on this has hitherto been carried out under the supervision of Chief Engineer, Desert Mounted Corps owing to his more favourable situation.

2. Pipe line construction to Railhead about $\frac{3}{4}$ mile N.E. of KARM.

The essential point, for ensuring rapid execution of work, is the even distribution of the pipes along the line of construction. This can be effected in one day with 10 tractors provided that the pipes are stacked east of the WADI GHUZZE prior to the morning of the first day of operations.

At present the pipes are stored at WELISHEIKH NURAN and would require 12 Austrian bogie flats to move them by rail east of the WADI GHUZZE in one day.

Labour (E.L.C. pipe screwers) is available at the disposal of Chief Engineer, XXth Corps, for handling the pipes and screwing them up, provided that pipes can be brought close to the line of construction. Very little distribution can be effected by manual labour owing to the weight of the pipes.

Given /

Given the pipes east of the WADI GHUZZE and 10 tractors:-

- 1 day is required for distribution.
- 1 day is required for screwing up.
- 1 day is required for filling and testing prior to delivery of water.

This estimate means continuous work and only gives a very small margin for delay due to cracked pipes etc.

3. Deep well pumps and engines.

To ensure that the deep well water supply may be fully utilised both on this side of BIR SABA and also in the town itself after capture, it is necessary that five deep well pumps and engines should march close behind the fighting troops. For this purpose three tractors with trailers or G.S. wagons are essential.

It is known that the wells at BIR SABA are prepared for destruction and we cannot expect to find the wells or engines at that place in working order.

4. Signals.

For the rapid delivery of cable etc. to divisions it is considered essential that at least four Ford cars (box) should be allotted to XXth Corps Signal Company from Z - 2 days onwards throughout the operations.

The work of laying buried cables to EL KHASIF can be taken in hand as soon as sanction is received. This work must be done by night and will entail an infantry escort.

5. A list of the requirements tabulated from paras. 1 to 4 above is attached, marked 'A'.

6. It would be a great assistance if the workshops and as much as can be spared of No. 220 A.T. Company, R.E. could be sent up to WELI SHEIKH NURAN as soon as possible to make the necessary preparations for increasing water storage, troughs, etc. at the various bases.

7. Water and Supplies.

As regards supplies, water convoys, etc. I attach a list of requirements (marked 'B') as far as these can be at present foreseen.

Headquarters,
XXth Corps.
28th August, 1917.

(Signed) J.S. Shea, M.G.
for Lieutenant-General,
Commanding XXth Corps.

RECAPITULATION OF REQUIREMENTS.

SERVICE.	TRACTORS with Trailers or G.S. WAGONS.	No. of water camels each with two fanatis.	LABOUR.	Days required	Date available for other work.
Decauville.	18 Tractors.	Water carried in 1st line.	2/23rd Sikhs. 60th Division, Pioneer Battn. less 1 Company.	Z and night Z/Z + 1.	Morning Z + 1.
Pipe Line.	10 Tractors for Z day and Z - 1 night only.	Water for E.L.C. pipe screwers on tractor. Fanatis reqd?	E.L.C. already at disposal of Chief Engineer.	Z, Z + 1. Z + 2.	Morning Z + 2.
Deep well pumps and engines.	3 Tractors.	Water on tractors.	Certain personnel of 220 A.T. Co.	Night Y/Z. Z, Z + 1. onwards.	When SHERIA water supply is assured.
Signals.	Fords Cars 4 for carrying up cable etc. to Divns. to be KK Corps Signal Co. at GAMLI.			From Z - 2 throughout duration of operations.	

A
128

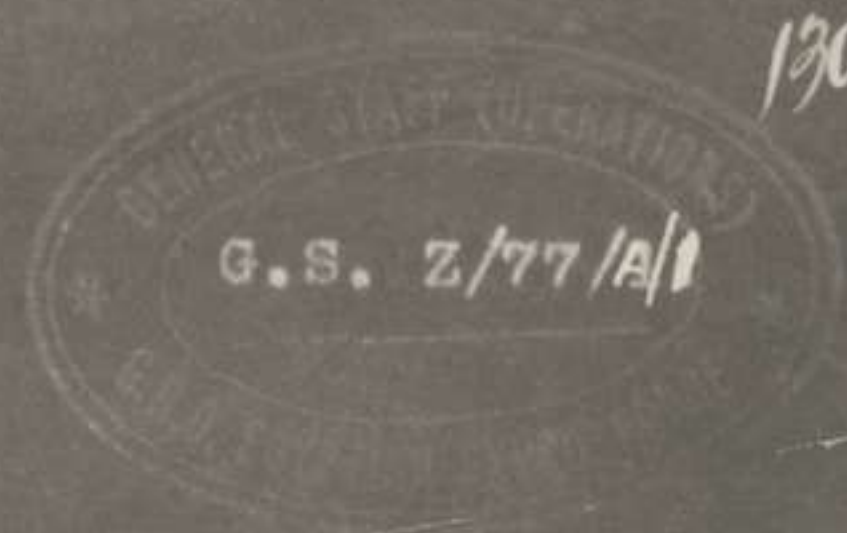
REQUIREMENTS AS FAR CAN BE FORESEEN AT THE MOMENT

REQUIREMENTS.	WHEN REQUIRED.	WHERE REQUIRED.
Supply Depot at GAMLI to be stocked with 8 days for 2 Divisions and Corps Troops (2,000 men and 550 horses) 4 days for 2,000 ^{men} working decauville and ammunition of whom about 1,000 would be Sikhs and petrol and oil for 3 Motor T. Companies.	Z - 8 days	GAMLI.
Personnel for above Depot 2 Officers, 25 other ranks and 15 gangs E.L.C.	Two days previous to starting stocking of Depot.	GAMLI.
Personnel for Supply Depot, 2 Officers and 25 other ranks and 12 gangs E.L.C.	Z - 6 day.	ESANI.
2 Coys. and 2 Sections C.T.C. for stocking ESANI Supply Depot from GAMLI with 6 days for 1 Division, Corps Cavalry Regt., and details.	Z - 6 day.	GAMLI.
Supply Depot with supplies for 6 days for 1 Divn. 1 Sikh Battn. and 1,500 Egyptians.	Z - 6 day.	SHELLAL.
7,500 Fanatis for water convoys.	Z - 5 day.	Shellal.
3,500 camels C.T.C. for water convoys.	Z - 3 day.	SHELLAL.
1 gang E.L.C. for poling cable.	Z - 3 day.	GAMLI.

-1297

SECRET

W.D.



General Officer Commanding,
XXIst Corps.

With reference to your G.S. 192 of 25th August, the Commander-in-Chief fully realises the difficulties in the way of using medium trench mortars on the front held by the Corps under your command, more particularly in view of the fact that it is undesirable - on account of the lie of the ground - to advance your line in the Sector opposite OUTPOST HILL and UMBRELLA HILL.

It seems possible, however, that as the construction of your new forward line in the left sub-section of the COASTAL Sector proceeds, it may be found desirable to advance this part of the line still nearer to the enemy, in preparation for an offensive against his defences between the EL ARISH Redoubt inclusive and the sea. In certain circumstances, also, it seems possible that it might become desirable to push forward somewhat from LEES HILL towards OUTPOST HILL in such a way as ^{might} ~~would~~ make the employment of one or two medium trench mortars useful.

As regards the forwarding of trench mortar ammunition, this is often carried up by hand through muddy communication trenches in France, so that the lack of trench tramways is not, at all events, a wholly insuperable difficulty.

After consideration of the above points, will you please forward your views as to whether it will not in fact be desirable to maintain a certain number of trench mortar batteries with your Corps, stating how many batteries you consider it would be useful to keep up.

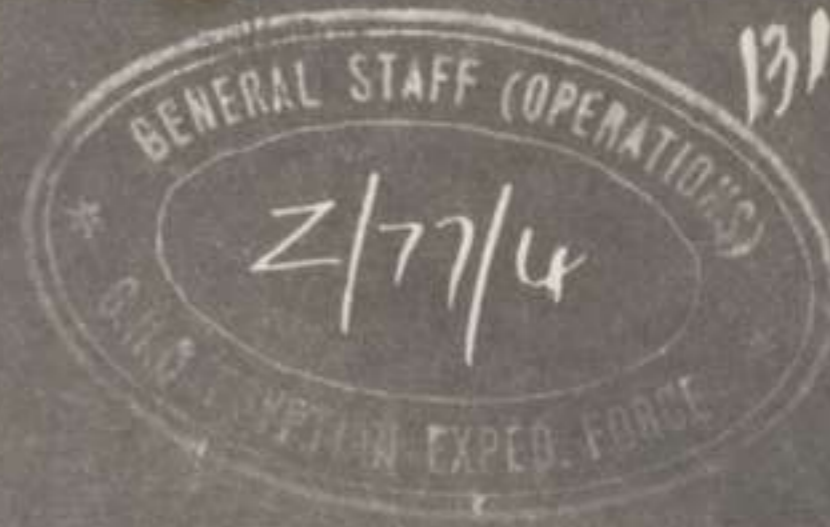
(Signature)

Major-General,
Chief of the General Staff,
Egyptian Expeditionary Force.

G.H.Q.,
29/8/17.

SECRET

WAD.



General Officer Commanding,
XXth Corps.

With reference to your letter of the 26th August, giving statement of requirements to enable the necessary preliminaries involved by this office G.S. Z/77, of 16th August, to be put in hand, the following is the present position of affairs :-

1. The Decauville from GAMLI to EL KHASIF. As it is possible that the Commander-in-Chief may begin the construction of the railway eastwards from SHELJAL at a somewhat earlier stage than was previously contemplated, it may be possible also to begin the construction of the GAMLI Decauville at an earlier stage. In this event the first 4 + 4½ miles of the GAMLI Decauville might be constructed before the commencement of operations. In this case it is presumed that the pioneer battalion of the 60th Division would be sufficient for the construction of this line, without drawing on the Sikh Pioneers at all. Will you please report, in due course, how, in the case of this plan being adopted, the amount of transport demanded in your letter under reference will be affected. Beginning on ^{the} evenings, there would be only some 2½ - 3 miles of Decauville still to be laid, and it would be possible to work part of this from Decauville railhead, and part of it by dumping material at intervals, in accordance with the original scheme.

on which the G.S. move out

/ In

In accordance with your letter, XXth Corps will be responsible for all arrangements with regard to the actual laying of the Decauville.

2. Pipe-line construction to railhead north-east of KARM.

The question of the provision of tractors to lay out the pipe-line is under consideration. It is contemplated, however, that the forward construction of the railway will be put in hand some days before operations begin. Arrangements can be made to carry out pipes with the construction trains, and to dump them wherever railway construction material is dumped. It is clear, however, that some transport will be required to string the pipes out from these dumps.

It may be necessary to start railway construction forward from IMARA station three days before the first day of operations. In this case railhead should reach the proposed KARM siding on the ~~2nd day~~. Will you please forward, in due course, a revised estimate of the transport required for handling the pipes in these circumstances, so as to indicate your minimum transport requirements. It is hoped that the above data will be sufficient to enable you to do this. As you are aware, the provision of transport for all ^{these} services is a matter of very considerable difficulty.

3. Deep Well Pumps and Engines. The question of the provision of tractors for carrying deep well pumps and engines to BIR SABA is being taken up, and a further communication on the subject will be sent you in due course.

/ 4. Signals.

evening of the
first day of
operations

133

4. Signals. The question of the allotment of Ford Cars to Corps Signal Companies is also being gone into.

The work of burying cables from GAMLI to EL KHASIF by night may be put in hand at any time, due precautions being made to prevent the fact that this work has been done from being discernible from the air. A cable having, however, been already laid in this direction by the Desert Mounted Corps, it is considered that the further work should also be carried out by that Corps. General Officer Commanding, Desert Mounted Column, has been instructed to put the work in hand.

5. The matter of forwarding part of No. 220 Army Troops Company, R.E., and workshops, to WELI SHEIKH NURAN has been taken up.

6. Water and Supplies. As regards Supply Depots along the Wadi GHUZZE, the question will arise, if IMARA Station is completed before the operations begin, as to whether the XXth Corps and Desert Mounted Corps cannot be based on that station.

It is presumed that a considerable amount of preliminary work with regard to the preparation of water storage, water facilities, etc., can be made at ESANI without necessitating any considerable garrison being maintained at that place. As to this, however, you will no doubt report in due course what is necessary.

7,000 camels are held available to provide water conveyors during the operations. The distribution of these camels between the XXth Corps and the Desert Mounted Corps cannot be decided upon until the two Corps plans have reached such a stage as will enable the Corps Commanders, in

/ consultation

consultation with each other, to make a close estimate of their respective requirements. It would appear, however, at present, that there should be no difficulty in providing 3,500 water camels for the use of the Corps under your command during the BIR SABA operations.

(sd) H. Lynden Bell

G.H.Q.

25/8/17.

29

Major-General,
Chief of the General Staff,
Egyptian Expeditionary Force.

Copies to :- Q.
E-in-C.

SECRET

W.D.

Z/77/4/1 195

General Officer Commanding,
Desert Mounted Corps.

With reference to your D.C. D/3, of 18th August,
the arrangements with regard to the laying of the Decauville
from GAMLI eastwards will become the responsibility of the
XXth Corps, although the work on this line has hitherto
been carried out under the supervision of your Chief
Engineer, owing to his more favourable situation.

(Gen) G. P. Darnley
for

Major-General,
Chief of the General Staff,
Egyptian Expeditionary Force.

G.H.Q.

23/8/17.

24

Copies to :- Q.
E-in-C.

W.D.

136 D
GENERAL STAFF (OPERATIONS)
G. S. Z/77/5/1

General Officer Commanding,
XXth Corps.

With reference to questions asked by you while at General Headquarters for the Commander-in-Chief's conference on 27th August, the establishment of the supply depot at GAMLI can be put in hand whenever necessary. It is not of course desired ^{able} to open the depot before it is actually required. As regards the supply personnel at GAMLI and ~~ESANI~~ ^{Imara}, this personnel will be found by the Director of Supplies and Transport. As regards that at ESANI, the supply personnel will have to be found by the formations concerned.

In the above connection, however, please see paragraph 6 (first sub-paragraph) of my G.S. Z/77/4 of today.

(Sd/ G. P. Dawson)
for
Major-General,
Chief of the General Staff,
Egyptian Expeditionary Force.

G.H.Q.,
29/8/17.

SECRET

W.D.

137

A.

From Chief, Egyptforce.

To Rear Admiral, EGYPT, Naval Headquarters, ALEXANDRIA.

E.A. 342 cipher.

31/8/17.

Desp. 1215.

The following cable has been received from Chief LONDON, begins :-

"I should be glad to know if you are satisfied that you will have all the Naval assistance you require.

It appears to me that this can take the form both of direct assistance to your left flank and of demonstration having the appearance of attempted landings on the coast.

If you think you require more than Naval C.-in-C. is prepared to undertake, I may be able to get him reinforced for a time at least, and in that event you should inform me when such reinforcements would be most useful". Ends.

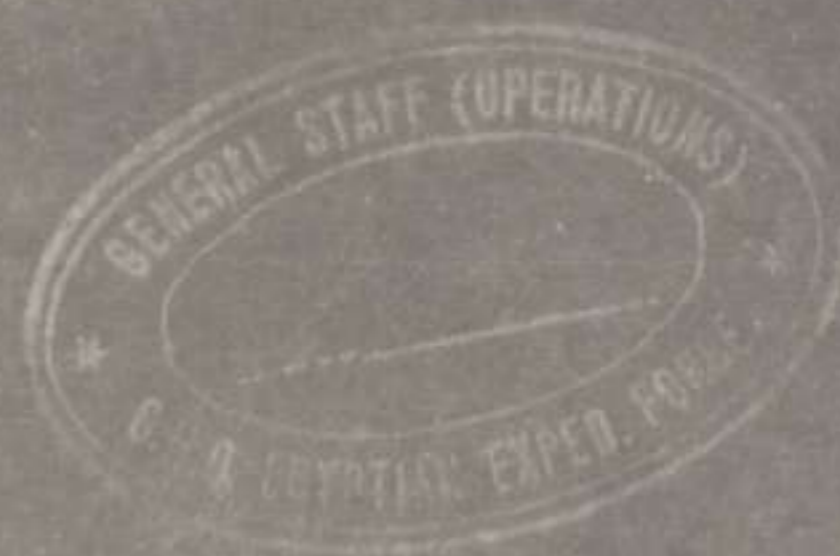
Reference above, for my operations I estimate that the assistance required from Navy will be :-

- (a) One cruiser Grafton Class and five or six large monitors
- (b) The necessary craft for landing a small force to cover the disembarkation of supplies north of GAZA if necessary. Such a force would not exceed one brigade of infantry, some mountain artillery, and the necessary Engineer and Medical Services; not exceeding 4,000 of all ranks, and including no wheeled vehicles or animals.
- (c) The necessary craft for taking soundings off the coast prior to, or during, operations, in order to find possible landing places in the neighbourhood of -
The mouth of the WADI EL HESI,
ASKALAN,
NAHR SUKEREIR.
- (d) Arrangements to enable the point of disembarkation of supplies to be changed at the shortest notice from DEIR EL BELAH to a point on the coast north of GAZA - probably the mouth of the WADI HESI.

If you could send a Staff Officer by to-night's train to consult with me I should be much obliged.

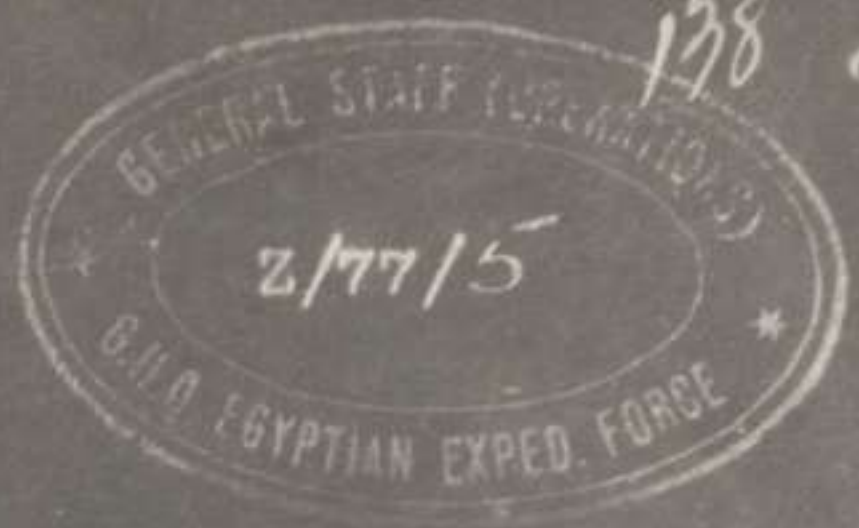
Copies to :-

O.(a).
O.(b).
C.G.S.
B.G.G.S.
I.(personal)
D.Q.M.G. (personal)
Filed C.S. Z/77/N.
W.D.
C.O.



SECRET

WD



General Officer Commanding,
Desert Mounted Corps.

With reference to your DC/D/11 of 25th August, the Commander-in-Chief will wait until the general plan of operations of the XXth Corps is submitted before going into your proposals in detail. In the meantime, however, he wishes your attention drawn to the following points :-

With regard to the moves proposed for the night Y/Z, he considers that you should keep both your divisions concentrated as far as possible, with a view to rapid action subsequently against the east and north-east of BEERSHEBA.

With reference to the proposal that the Australian Division should attack HILL 1180 from the south-east and east, it would seem preferable that the mounted troops should operate further round the enemy's flank than this, and that their line of operation should not be from the south-east and east against BEERSHEBA but from the east and north-east.

It does not seem that much can be gained by moving the Camel Brigade out from SHEIKHAL on Z day. It would appear that the whole of the mounted force at SHELLAL would be better employed if held back so as to await any opportunity that may offer for operating with full effect against the flank of an enemy advancing against the inner flank of the XXth Corps.

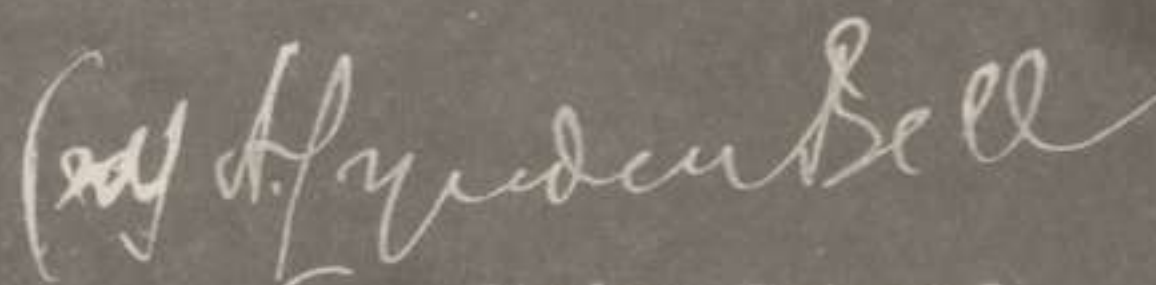
The Commander-in-Chief considers that if, after taking BEERSHEBA, the Camel Brigade is employed on the right of the XXth Corps, it will be very vulnerable to the enemy's cavalry, unless there are sufficient mounted troops operating

/with

with it. The enemy is obviously likely to employ his cavalry on that flank.

Finally, the Commander-in-Chief cannot agree that it seems probable that the best results would be obtained by our cavalry operating in the neighbourhood of SHERIA until the enemy shows signs of evacuating the KAUWUKAH line. It is impossible to forecast how the situation may develop, but at the present it appears that your proposal would involve the employment of the cavalry on a line not wide enough round the enemy's flank. It is absolutely essential that your mounted troops should not only find the enemy's extreme flank, but should also get well round it. The closest contact with the right of the XXth Corps is not necessary, for the enemy would not be able to take advantage of any gap between the two Corps so long as your very powerful mounted force were on his outer flank.

The necessity for securing the water at NEGILA early is also a factor of the first importance.



Major-General,
Chief of the General Staff,
Egyptian Expeditionary Force.

G.H.Q.,
31/8/17.

79.5