

AWM4

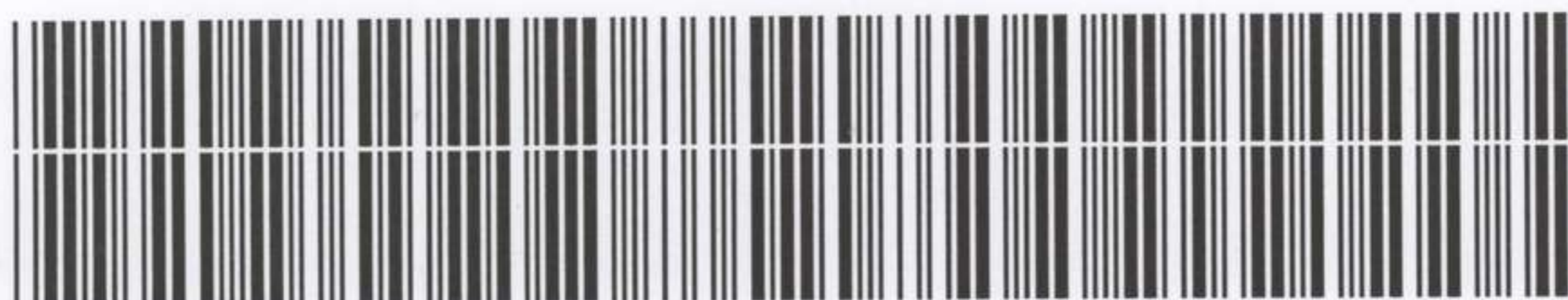
**Australian Imperial Force unit war diaries,
1914-18 War**

Infantry

Item number: 23/45/33 PART 3

Title: 28th Infantry Battalion

December 1917 Appendices



AWM4-23/45/33PART3

99



20K162.
+ 36D.2.3.
15-11-17.

PRINTED BY NO 2 ADVANCED SECTION A.P.S.S.

346

S.E. of Deulemout.

346

99



POK3170
28.V.25
15-11-17

PRINTED BY N°2 ADVANCED SECTION A.P.S.S.

347



20K3171.
284 19-25.
15-11-17.

Printed by W.P. Advanced Section A.P.O.S.S.

99



FORBES
REV. A-9
15-11-17

PRINTED BY NO. 2 ADVANCED SECTION, A.P.G.S.S.

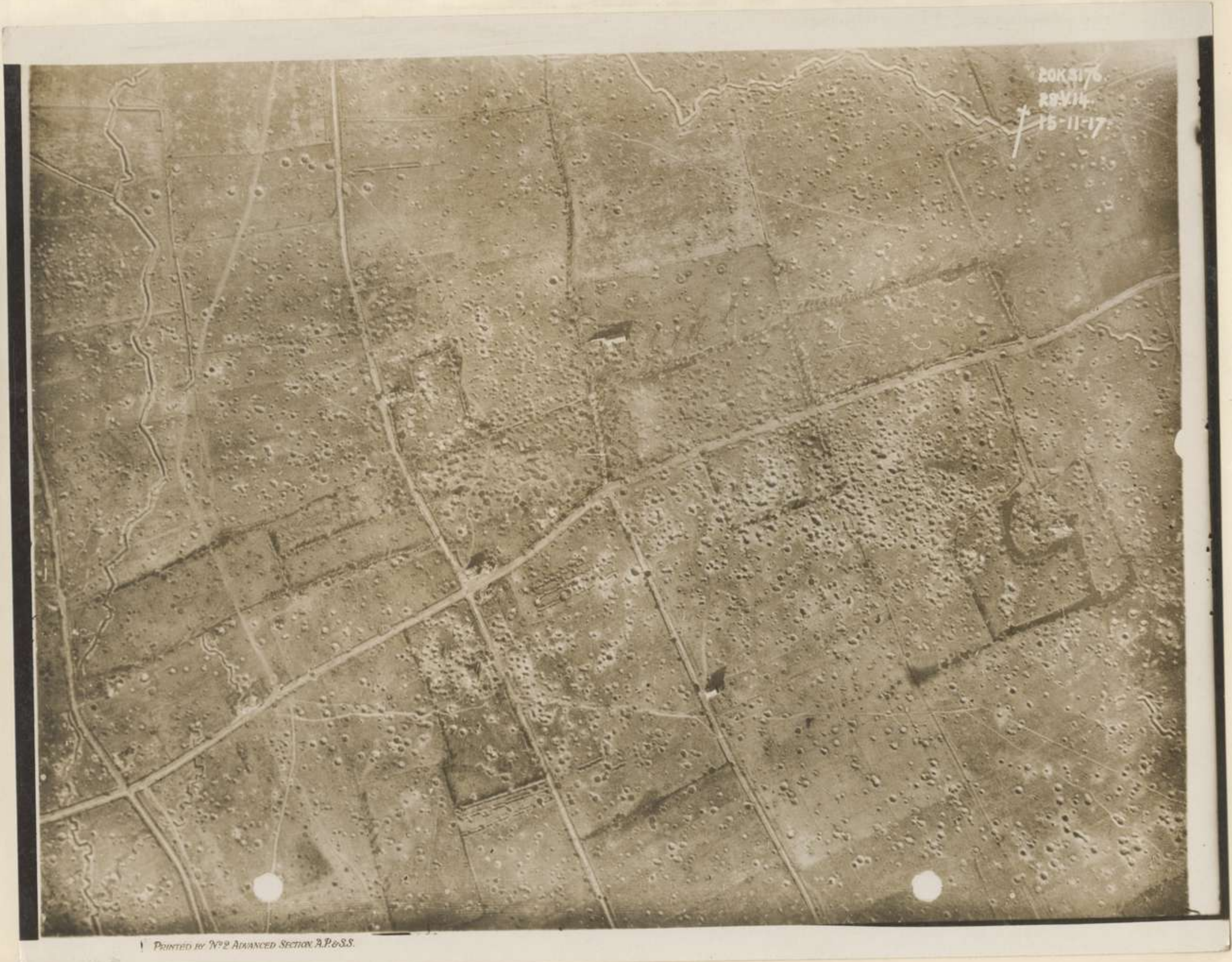
349

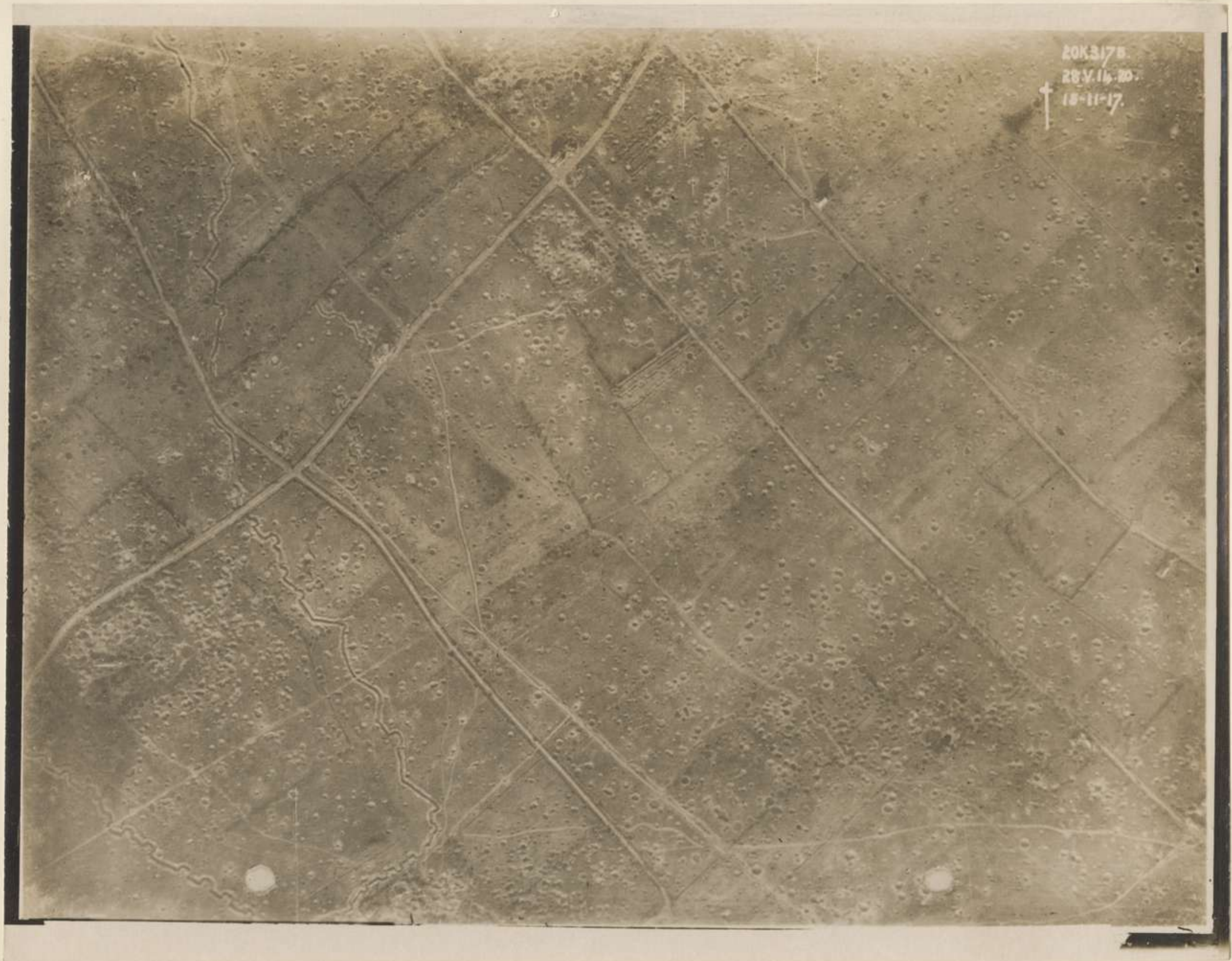
Comines/



20K3161.
28.V.20-27.
15-11-17.

PRINTED BY W2 ADVANCED SECTION, A.P. & S.S.





20K3175
28.V.14.20.
18-11-17.

89



20K3160.
REV. 15-16
15-11-17

PRINTED BY 'N°2 ADVANCED SECTION A.P. & S.S.

353



89



355



20K3169.
28.0.24.30.
15-11-17.

PRINTED BY NO 2 ADVANCED SECTION, A.P.O.S.S.



Printed by No 2 Advanced Section A.P.S.S.



PRINTED BY NO 2 ADVANCED SECTION, A.P. & S.S.

Dewleam



PRINTED BY N°2 ADVANCED SECTION A.P. 633.





Below name



S. W. Deulemont.
Showing the
R. Deule.

362



69.B.35
28.V.8.cd.14.abd
29.11.17 1.P.M

363

Behind
Warneeton.

363



Unknown

? 36c 5.





69 B 75
36c 4th 5cc
5.12.17 1 P.M.

PRINTED BY NO 2 ADVANCED SECTION A.P.O.S.S.

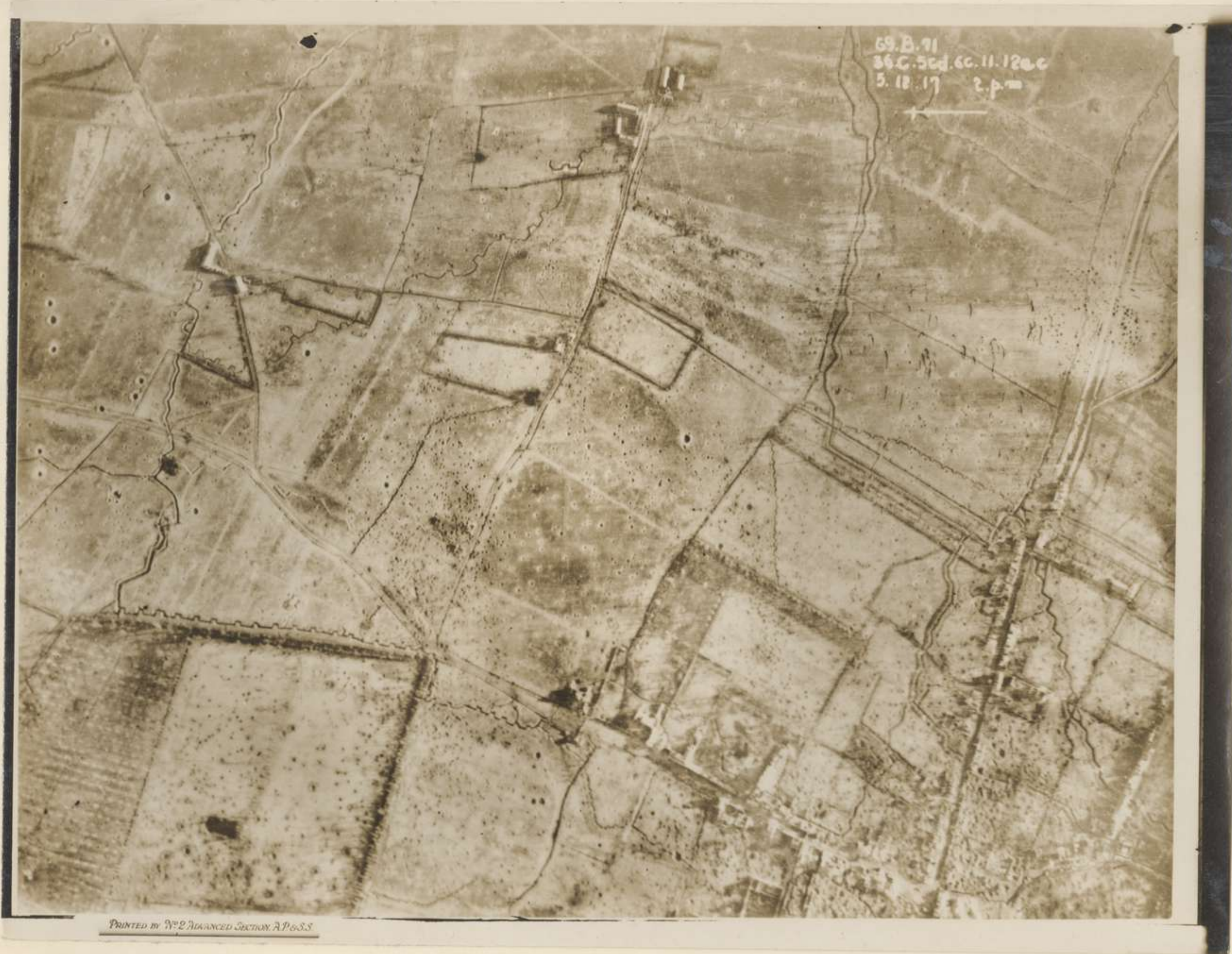
99



69.1.32
28.11.1917
5.12.17 1pm

PRINTED BY NO 2 ADVANCED SECTION, A.P. & S.S.

367



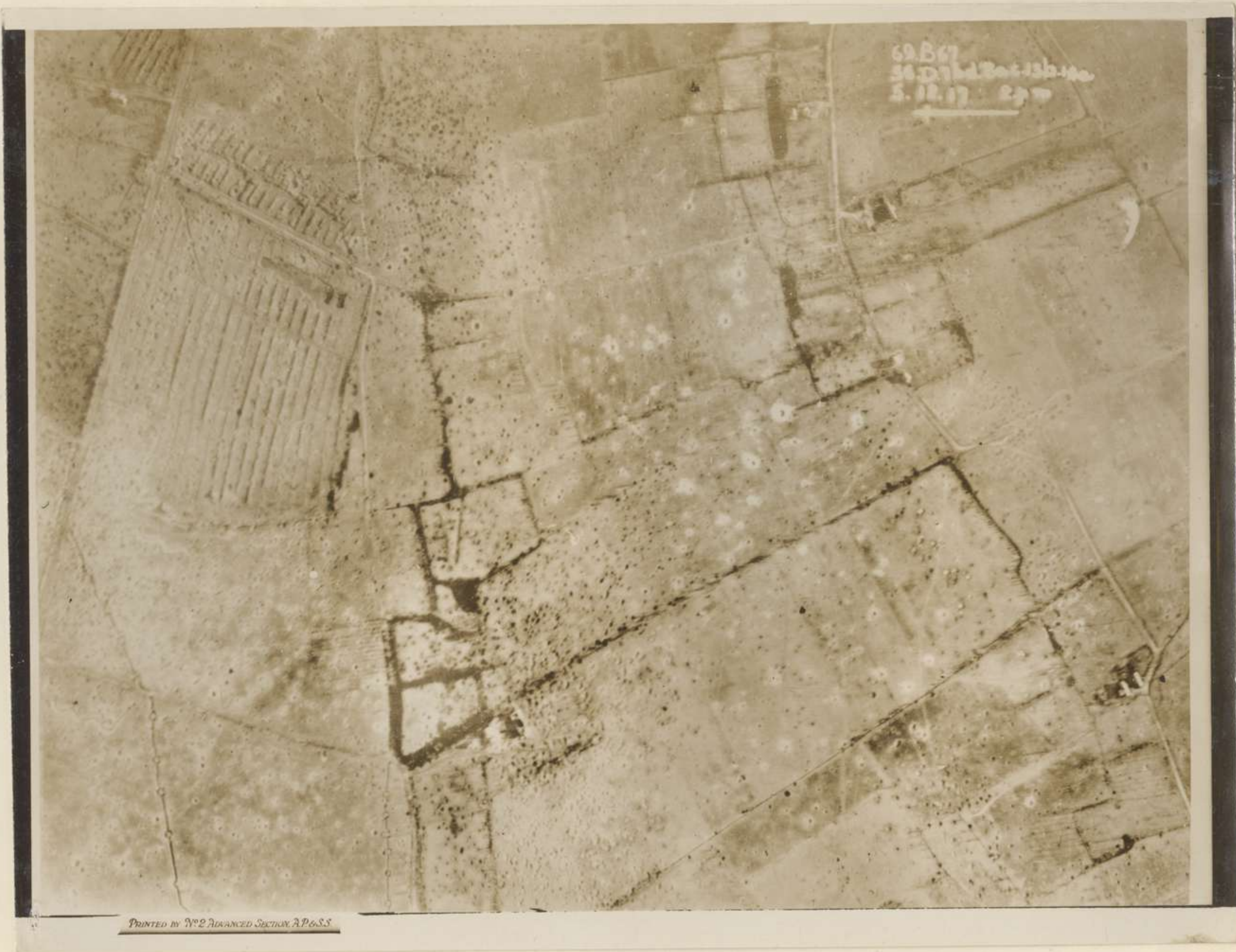


59 B. 72
 36 C 60d. 12.
 5. 12. 17 2pm



PRINTED BY N° 2 ADVANCED SECTION, A.P.S.S.

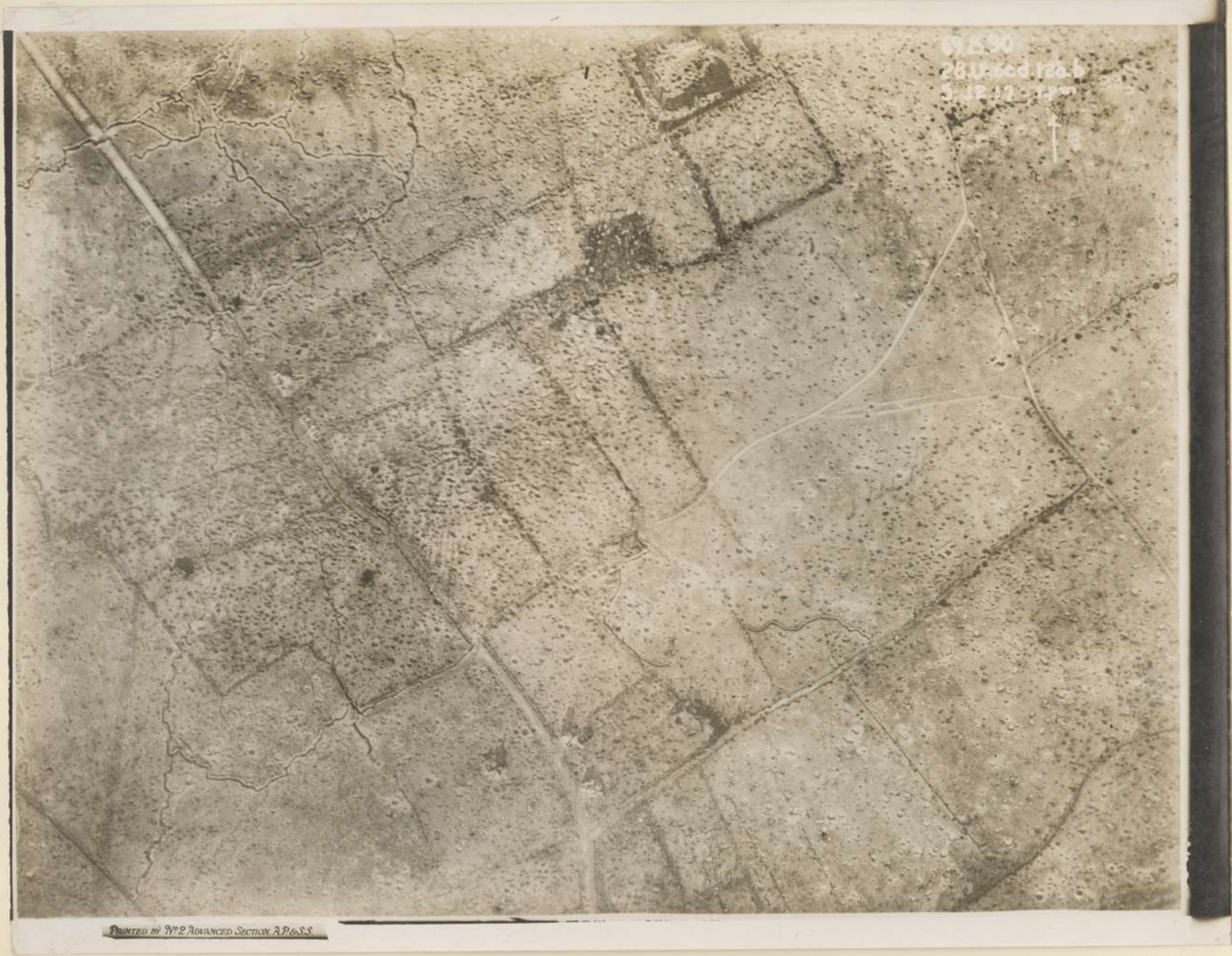
99



PRINTED BY NO 2 ADVANCED SECTION A.P.G.S.S.

370







PRINTED BY NO 2 ADVANCED SECTION, A.P.6.S.S.



S. ~~By~~ Deulemantz.

374



PRINTED BY N°2 ADVANCED SECTION A.P. & S.S.

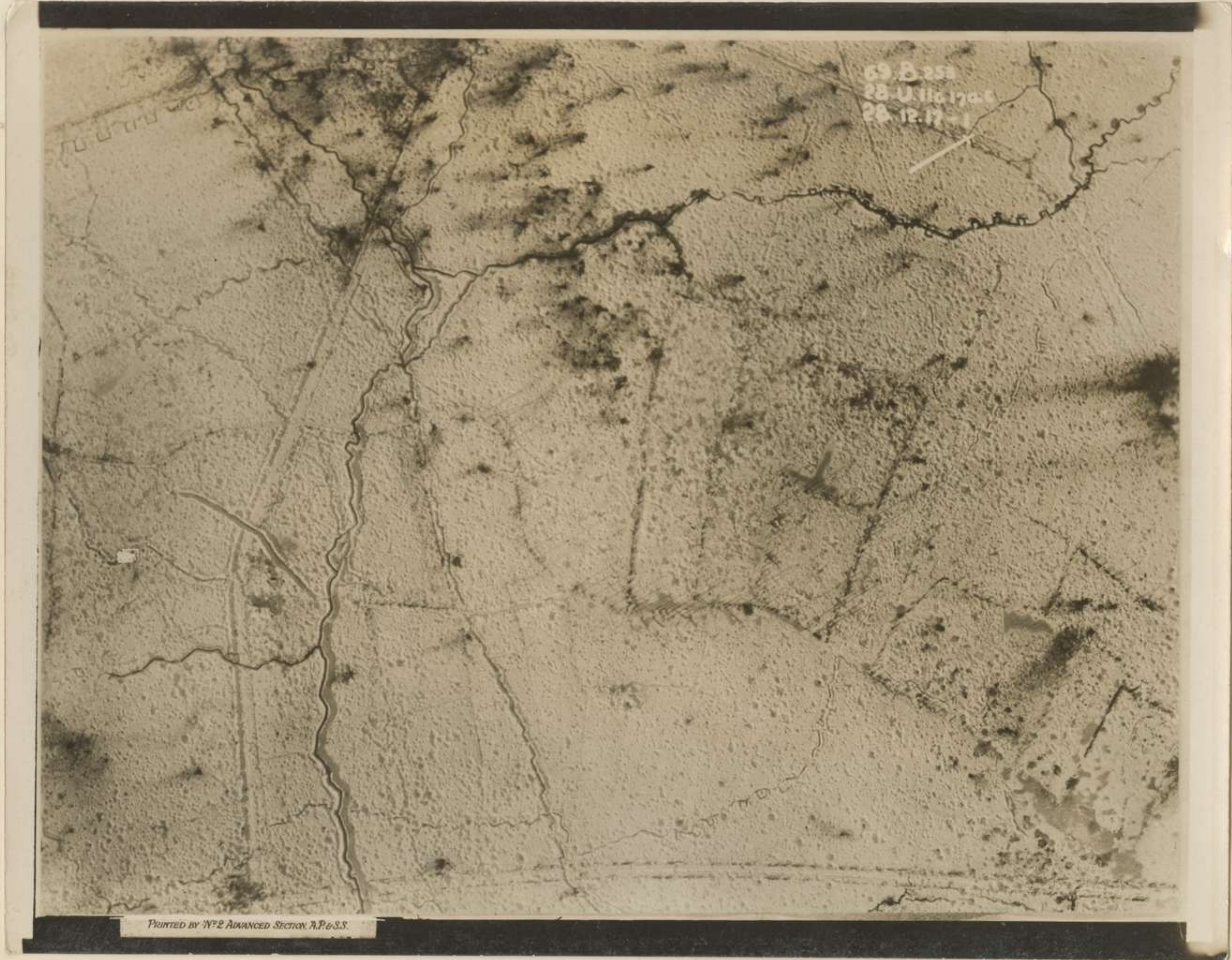
69



69.B.234
 28.V.3cd 9.100
 28.12.17-1

PRINTED BY W/2 ADVANCED SECTION, A.P. & S.S.

376





59 B. 215
 28. V. 11d. 125175 18a
 28. 12. 17-12

PRINTED BY N°2 ADVANCED SECTION A.P.G.S.S

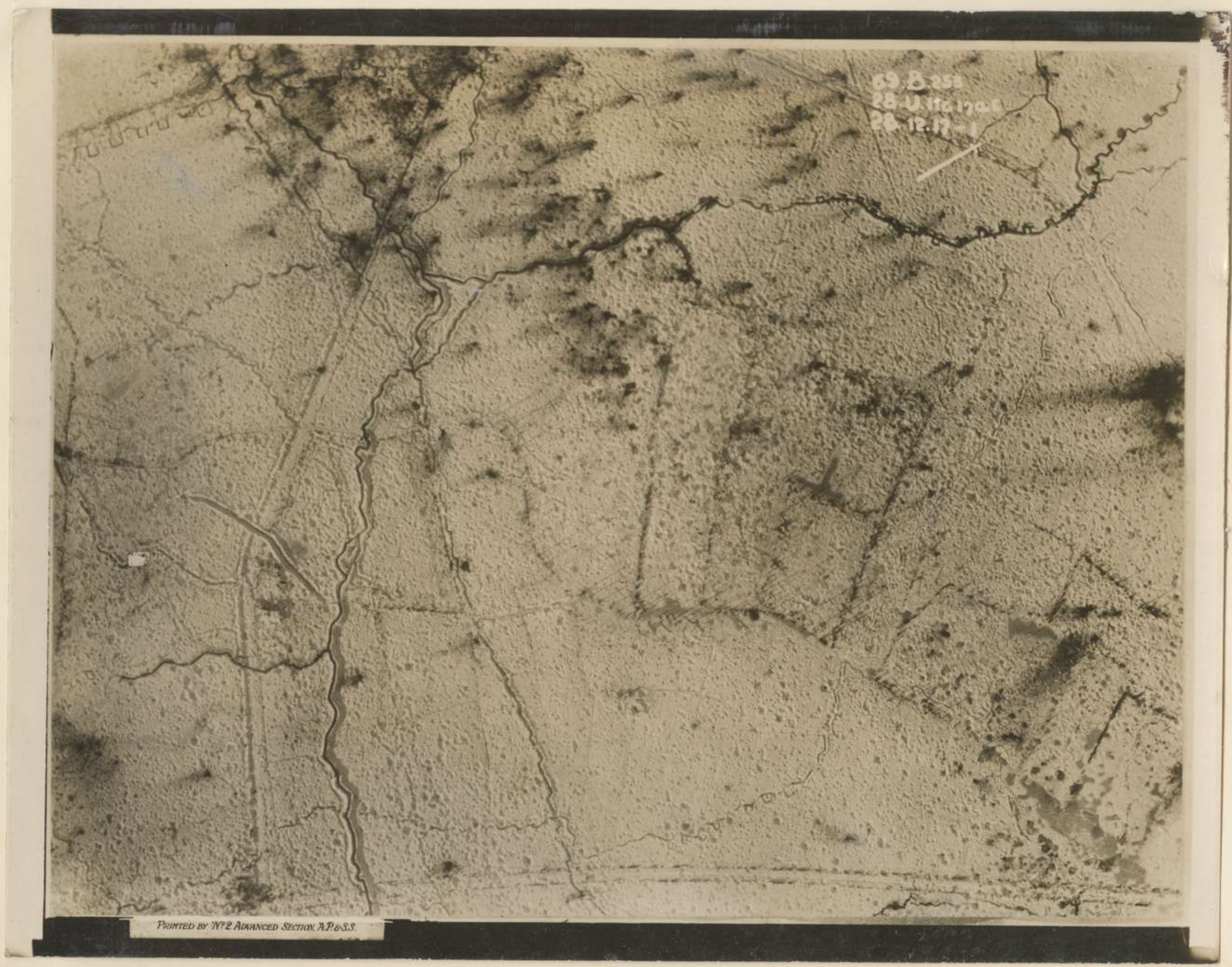
99



69 B.209
28.0.11
28.12.17-12

PRINTED BY NO 2 ADVANCED SECTION A.P.S.S.

379



69 B 252
 28 U 110 1706
 28 12 17

PRINTED BY HQ 2 ADVANCED SECTION, A.P. & S.S.



PRINTED BY 9th ADVANCED SECTION A.P.6.55



69 5 212
 110 5 212
 28 12 11 11

PRINTED BY NO 2 ADVANCED SECTION A.P. & S.S.



69 B 231
 28.V.9cd.15
 28.12.17-1

PRINTED BY 'W'2 ADVANCED SECTION A.P. & S.S.



69 B 229
28.V.9 15
28.12.17-1

PRINTED BY N°2 ADVANCED SECTION, A.P. & S.S.



PRINTED BY N°2 ADVANCED SECTION, A.P. & S.S.



69.B.227
 28.V.8.9ac 14b
 28.12.17-1

PRINTED BY NO 2 ADVANCED SECTION A.P.S.S.

99



59 B 284
28 V. 8cd 148b3
28.12.17-1

PRINTED BY NO 2 ADVANCED SECTION, A.P. & S.S.

387



69 B226
 28 VISBD 15442045
 28 12 17 - 1

PRINTED BY NO 2 ADVANCED SECTION, A.P. & S.S.

99



69.B.219
28.V.7cd.9c13b190
28.12.17-12



PRINTED BY NZ ADVANCED SECTION, A.P.O.S.S.

389



69.B.238
28.V.9bd.10.16ab
28.12.17-1

PRINTED BY N°2 ADVANCED SECTION A.P. & S.S.



69



69 B.237
28. V. 102078.140
28. 12. 17 - 1

PRINTED BY THE ADVANCED SECTION A.P.O.S.S.

392

89



PRINTED BY NO 2 ADVANCED SECTION, A.P. & S.S.

393



99



69 B 211
28.V.17 bcd 18
28.12.17-18

PRINTED BY N°2 ADVANCED SECTION, A.P. & S.S.

395

99

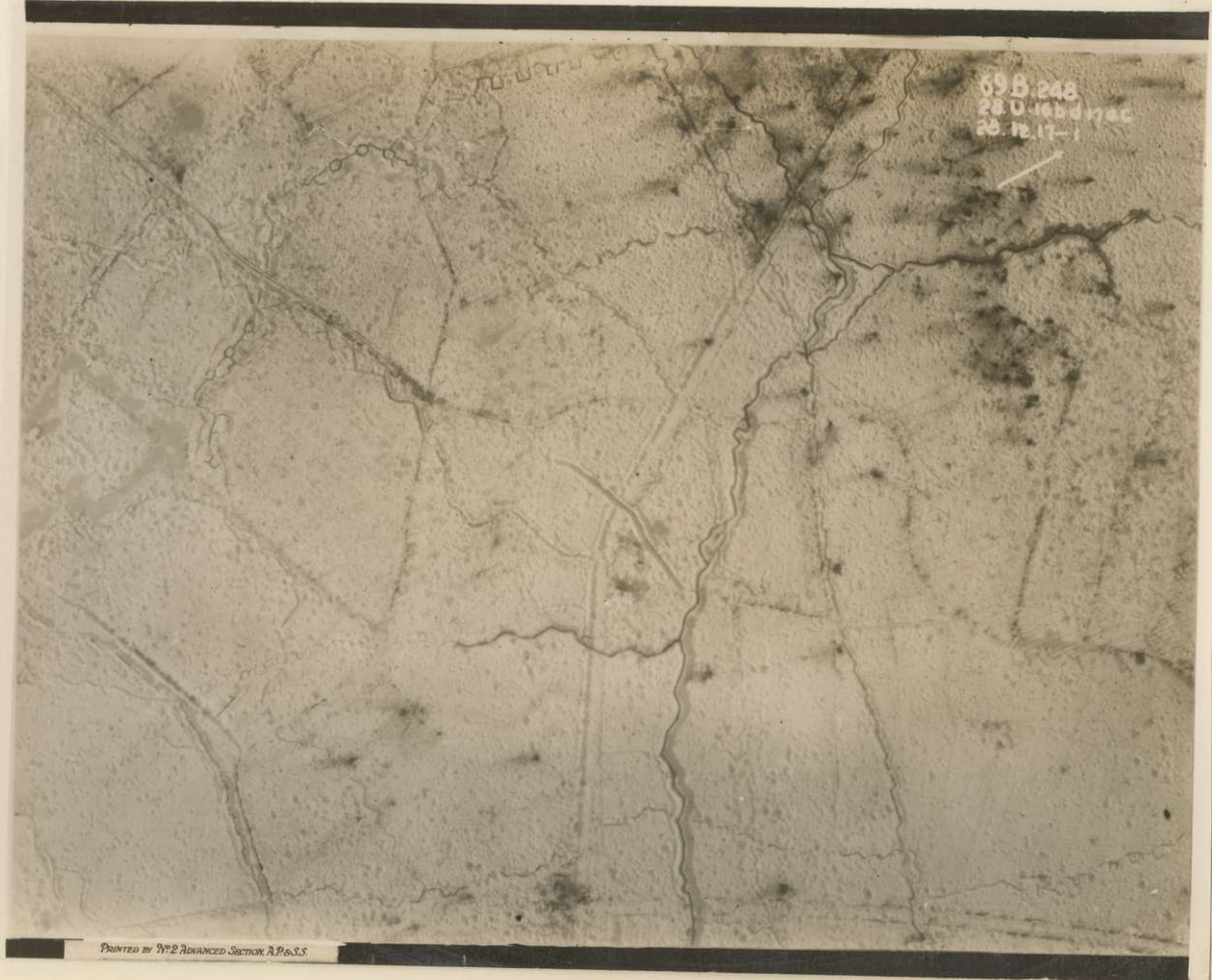


69 Basl
28.4.1964 last
28.12.17 - 1

PRINTED BY N°2 ADVANCED SECTION A.P. & S.S.

396

99



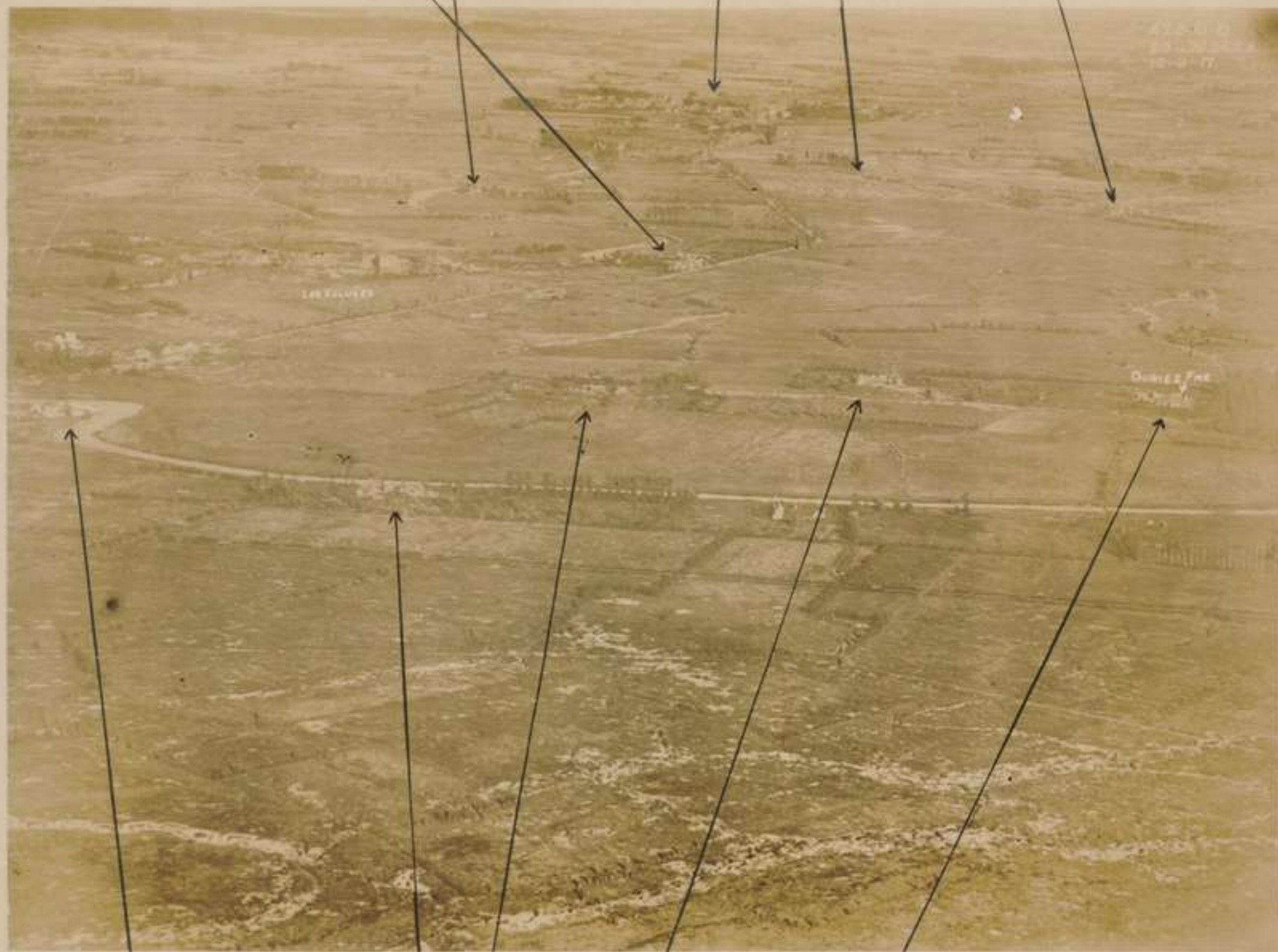
PRINTED BY NO 2 ADVANCED SECTION A.P.S.S.

391





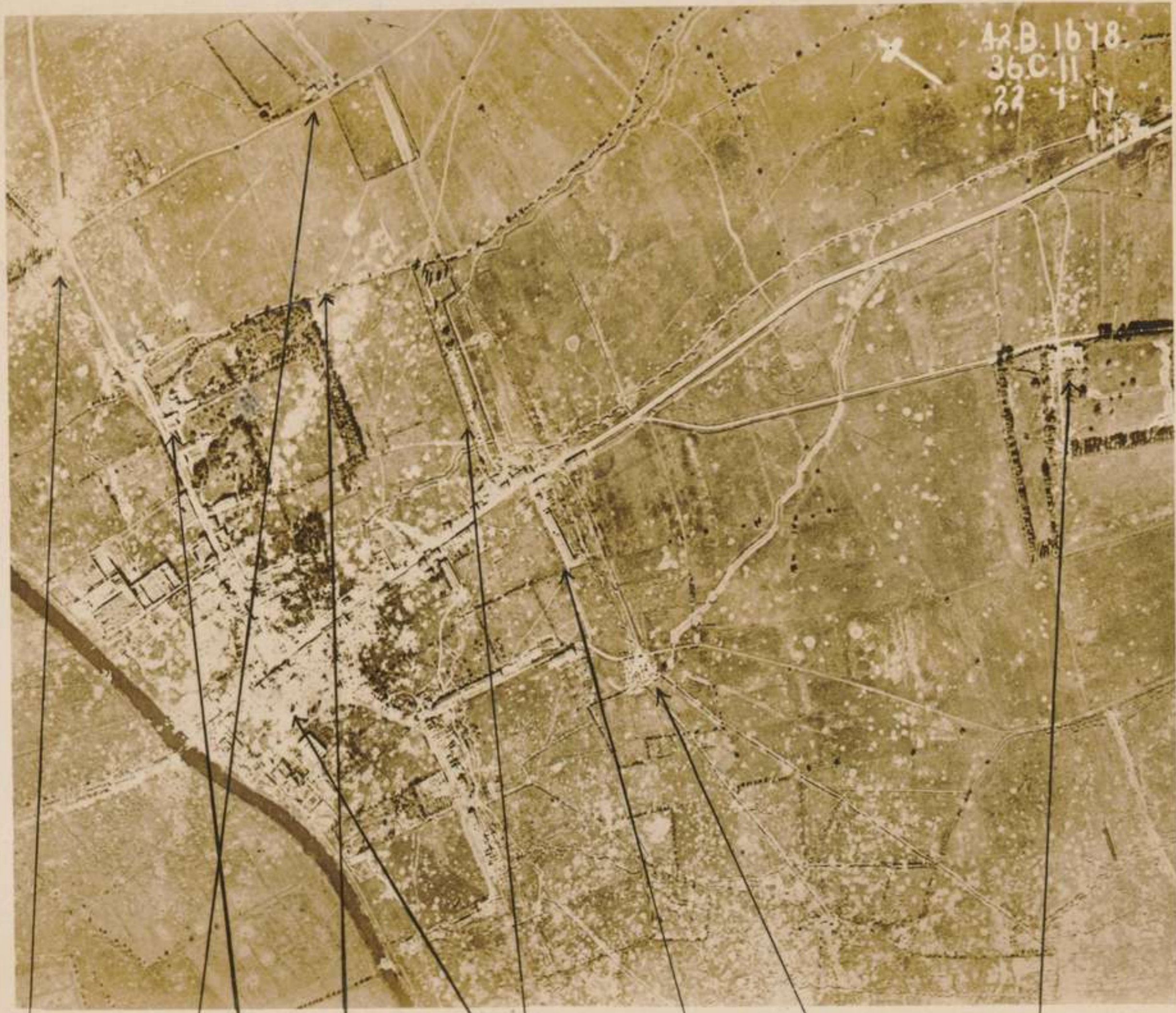
MANSIONS
36D1999
QUEGRY
PARK 36D7829



PONT ROUGE
PLANTATION FARM
UNKNOWN FARM
SCREENED FARM
DURIEZ FARM



PRINTED BY No. 2 ADVANCED SECTION, A.P.A.S.S.



42B.1678
36C.11
22 1 17

THE CHATEAU

BECQUE
GERMAINE

CEMETERY

FARM DE LA
VACHERIE

PRELINGHIEN
CHURCH

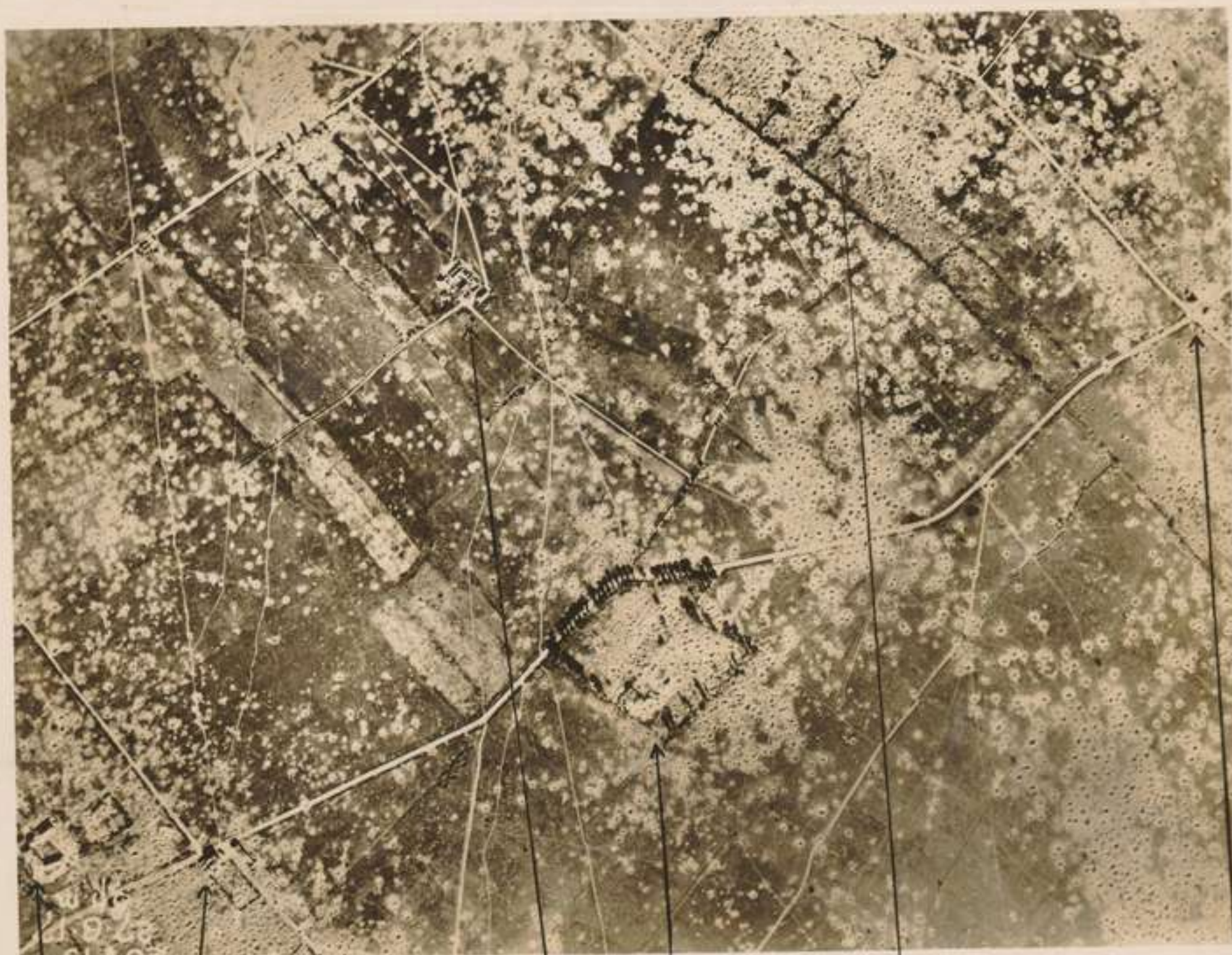


42B.0.10
36C.11
10.5.17

PRELINGHIEN

PRINTED BY No. 2 ADVANCED SECTION, A. P. & S. S.

400

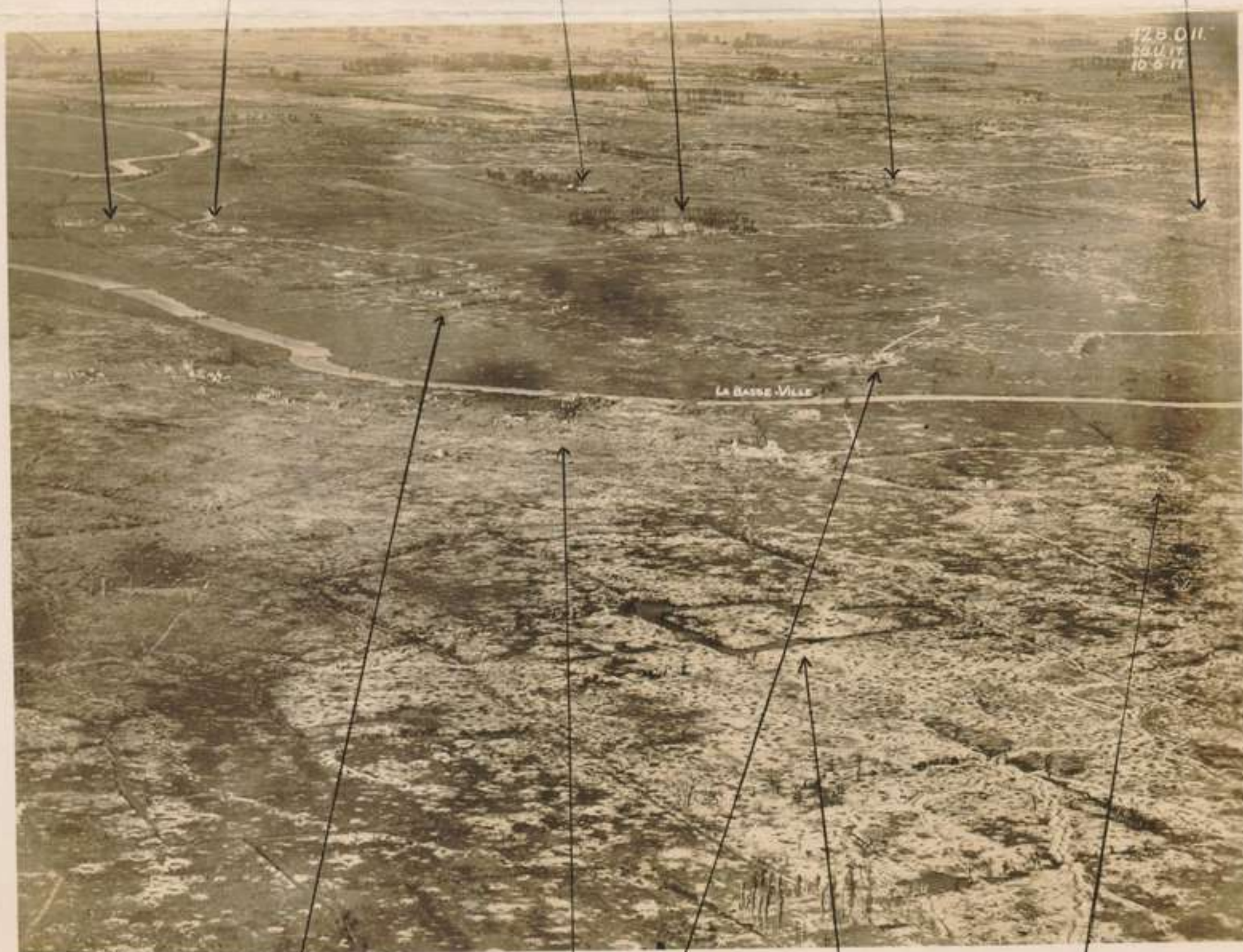


MAIRIE DE
WARREYON-SUD

POSTE DE
DOUANES

WAUSTINE
FARM

BRIN CHATEAU
FARM



175 011
120 17
10 5 17

LA BASSE VILLE

SPINNING
MILL

SUGAR
REFINERY

WICAT FARM

TROIS TILLEULS
FARM

GRAND HALE
FARM



PRINTED BY No. 2 ADVANCED SECTION A.P.S.R.

