

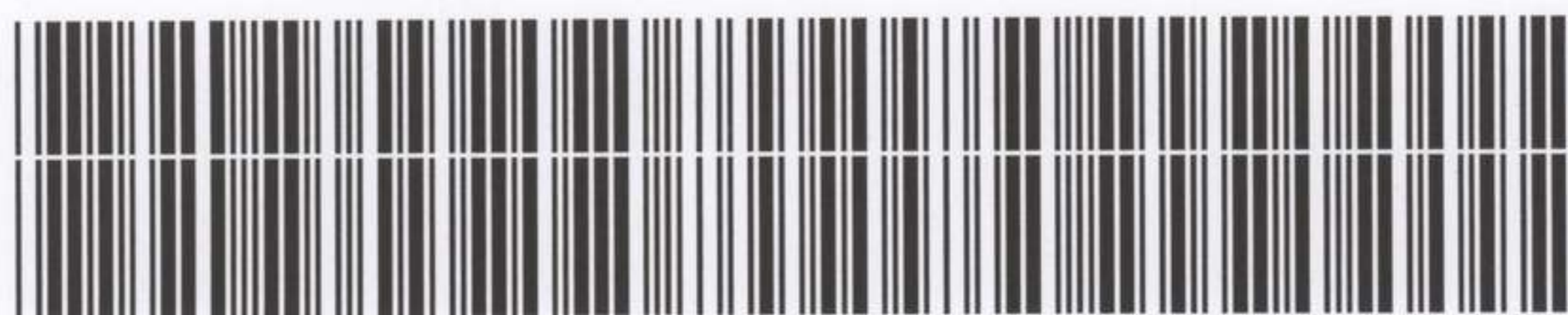
AWM4
Australian Imperial Force unit war diaries,
1914-18 War

Infantry

Item number: 23/12/3 PART 2

Title: 12th Infantry Brigade

May 1916 Duplicates



AWM4-23/12/3PART2

WAR DIARY

Army Form C. 2118

Instructions regarding War Diaries and Intelligence Summaries are contained in F. S. Regs., Part II. and the Staff Manual respectively. Title Pages will be prepared in manuscript.

INTELLIGENCE SUMMARY

(Erase heading not required.)

Place	Date	Hour	Summary of Events and Information	Remarks and references to Appendices
Mrapum	4/3/16		the move of part of 46 th Battalion who occupied part of line on the left right to left of line completed, being relieved by 4 th Pioneer Bn. Orders issued for Battalions turning left on case of alarm.	
"	2/3/16		The brigade was turned out by the alarm being sounded, as a result ammunition was issued. 4 th Battalion, 45 th , 47 th , details of 46 th and 48 th in 21 minutes, only the 45 th , 47 th , details of 46 th and 48 th marching. Evn Coy took part 46 th Bn being on front line and the 48 th at 7 th battery parade at the bank.	
"	3/3/16		120 reinforcements posted to 45 th Bn all N & W men	
"	4/3/16		Orders received to move out to front line. Brigade had 40 issued	Appendix 11
"	5/3/16		45 th and 48 th Bns moved out to front line.	
(Mrapum front line)	4/3/16		Brigade HQ, Machine Evn Coy and 107 th Pn (as reserve Bn) moved out to front line.	
"	4/3/16		All the above were camped at HABETA Camp	
"	4/3/16		All defence works being laid on, with supply limited	
"	4/3/16			

WAR DIARY

Army Form C. 2118

Instructions regarding War Diaries and Intelligence Summaries are contained in F. S. Regs., Part II. and the Staff Manual respectively. Title Pages will be prepared in manuscript.

or INTELLIGENCE SUMMARY

(Erase heading not required.)

Place	Date	Hour	Summary of Events and Information	Remarks and references to Appendices
Front line	9/1/16		<p>Work on posts proceeding, working slow, owing to want of wire and wooden pickets. Policy of constructing small advanced posts progressing</p> <p>Two companies of reserve Bn sent to front line to assist 45th Bn in chipping away sand and putting works in proper state of defence. Officers of Reserve Bn carried out reconnaissance work under their commanding officer.</p>	
	10/2/16		<p>Large tarpaulin tank for reserve supply of water fixed up and about 3000 gallons pumped in, water held in tank very satisfactory</p>	
	11/3/16		<p>Cm C. Sir Archibald Murray inspected left of line occupied by 45th Bn. and expressed satisfaction with all he saw.</p>	
	12/5/16		<p>The Brigade Commander expressed his satisfaction to all ranks through commanding Officers of the work carried out in bringing the line occupied by the Brigade to such a satisfactory state of defence.</p>	

WAR DIARY

Army Form C. 2118

Instructions regarding War Diaries and Intelligence Summaries are contained in F. S. Regs., Part II. and the Staff Manual respectively. Title Pages will be prepared in manuscript.

or INTELLIGENCE SUMMARY

(Erase heading not required.)

Place	Date	Hour	Summary of Events and Information	Remarks and references to Appendices
Sapeum front line	13/10/46		Work on all posts still progressing, remainder of day after 1100 was observed as a holiday	
"	14/10/46		with the exception of standing to arms 15 min before dawn, church parades were the only parades carried out.	
"	17/10/46		Orders issued for the return of Brigade to Railhead & Sapeum.	appendix III
"	14/10/46		One Company 107 th Bn proceeded to Sapeum to take over Divisional duties from the 52 nd Bn until 18 th inst. Remainder of 107 th Bn (3 Coy) moved to Railhead	
Railhead	17/10/46		Co. HQ, Machine & Gun Coy and Signal section moved to Railhead. The other units handed over to 13 th Inf Brigade. 11 th Bn was relieved and moved to Railhead	appendix II C
"	18/10/46		15 th Bn moved to Railhead. 46 th Bn moved to Sapeum and relieved relieved company of 107 th Bn. doing Divisional duties	

WAR DIARY

Army Form C. 2118

Instructions regarding War Diaries and Intelligence Summaries are contained in F. S. Regs., Part II. and the Staff Manual respectively. Title Pages will be prepared in manuscript.

or INTELLIGENCE SUMMARY

(Erase heading not required.)

Place	Date	Hour	Summary of Events and Information	Remarks and references to Appendices
Railhead Serapeum	1/7/46		<p>1st Bn moved to Serapeum 2nd Bn moved to Railhead</p> <p>Training proceeded with</p> <p>Orders issued re formation of mobile column to operate east of the front line of positions. See Brigade Order No. 21 attached</p> <p>Various instructions from 4th Aust Div in connection with SERAPEUM defences</p> <p>Instructions re move of Brigade to Serapeum. See copy of administrative instructions attached</p> <p>Brigade to take part in night operations. See copy of Brigade Order No. 22 also Appendix I and II to Order No. 22 attached hereto.</p>	<p>Appendix III</p> <p>Appendix IV</p> <p>Appendix V</p> <p>Appendix VI 29</p> <p>Appendix VII</p>

WAR DIARY

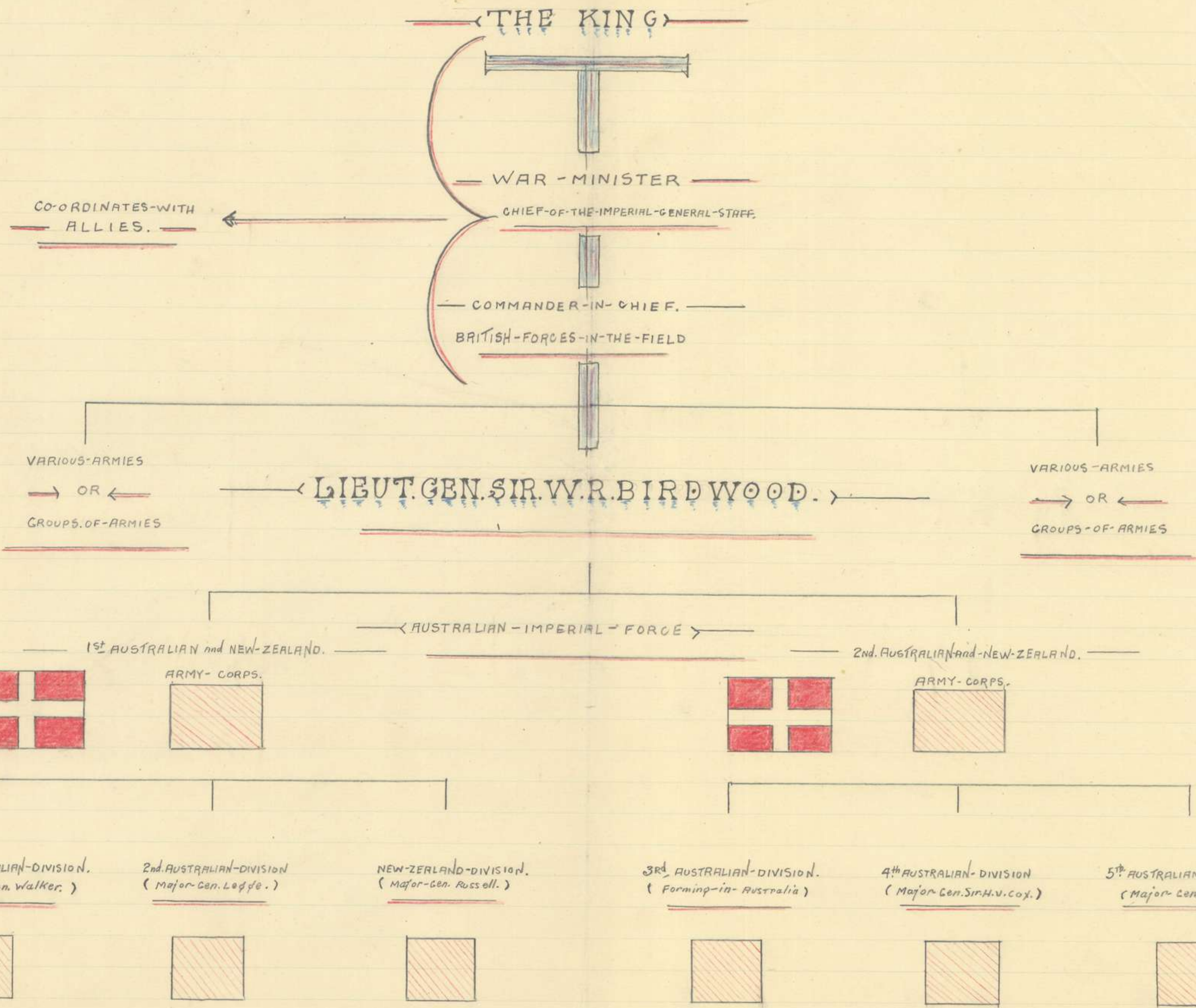
Army Form C. 2118

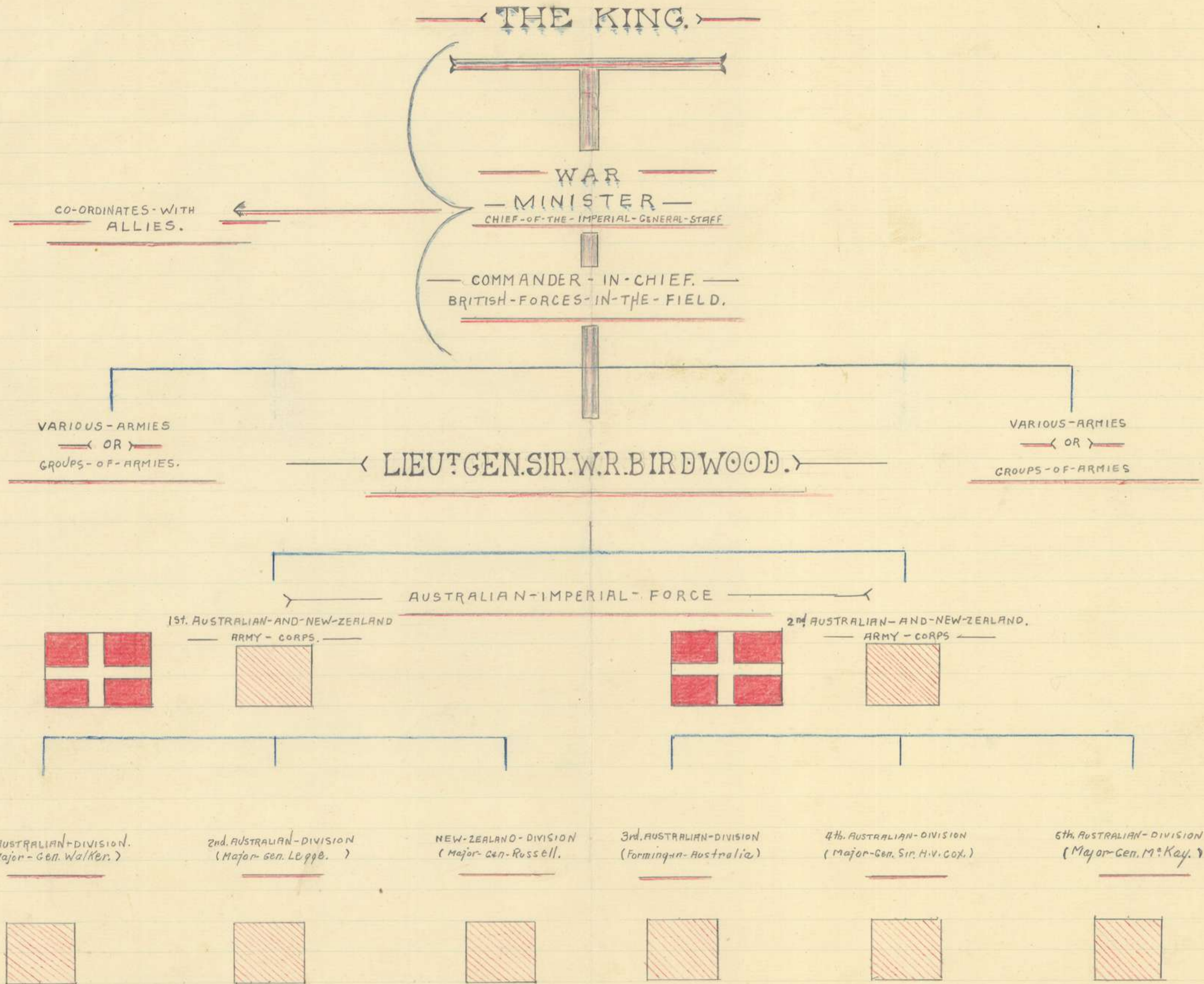
Instructions regarding War Diaries and Intelligence Summaries are contained in F. S. Regs., Part II, and the Staff Manual respectively. Title Pages will be prepared in manuscript.

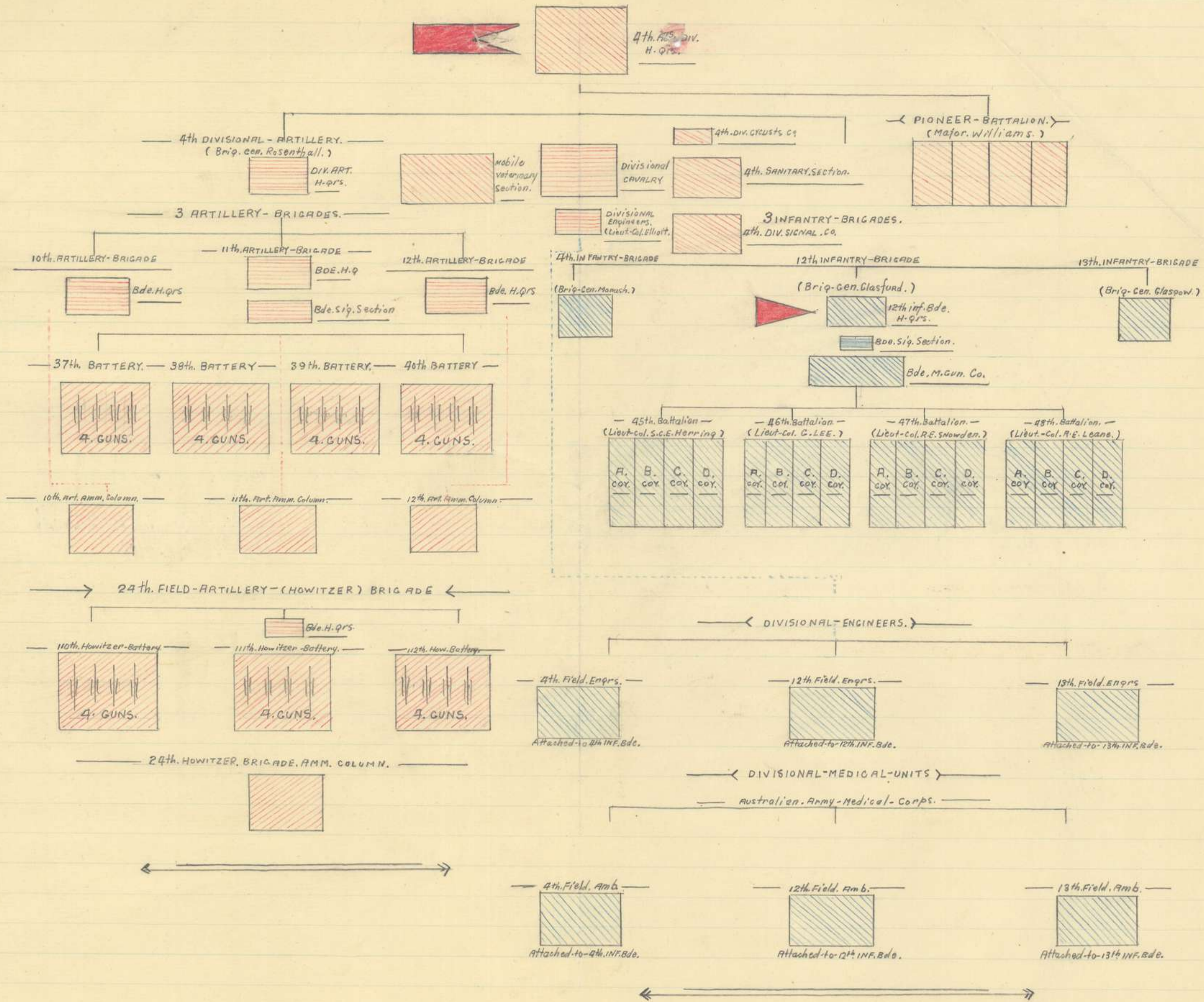
or INTELLIGENCE SUMMARY

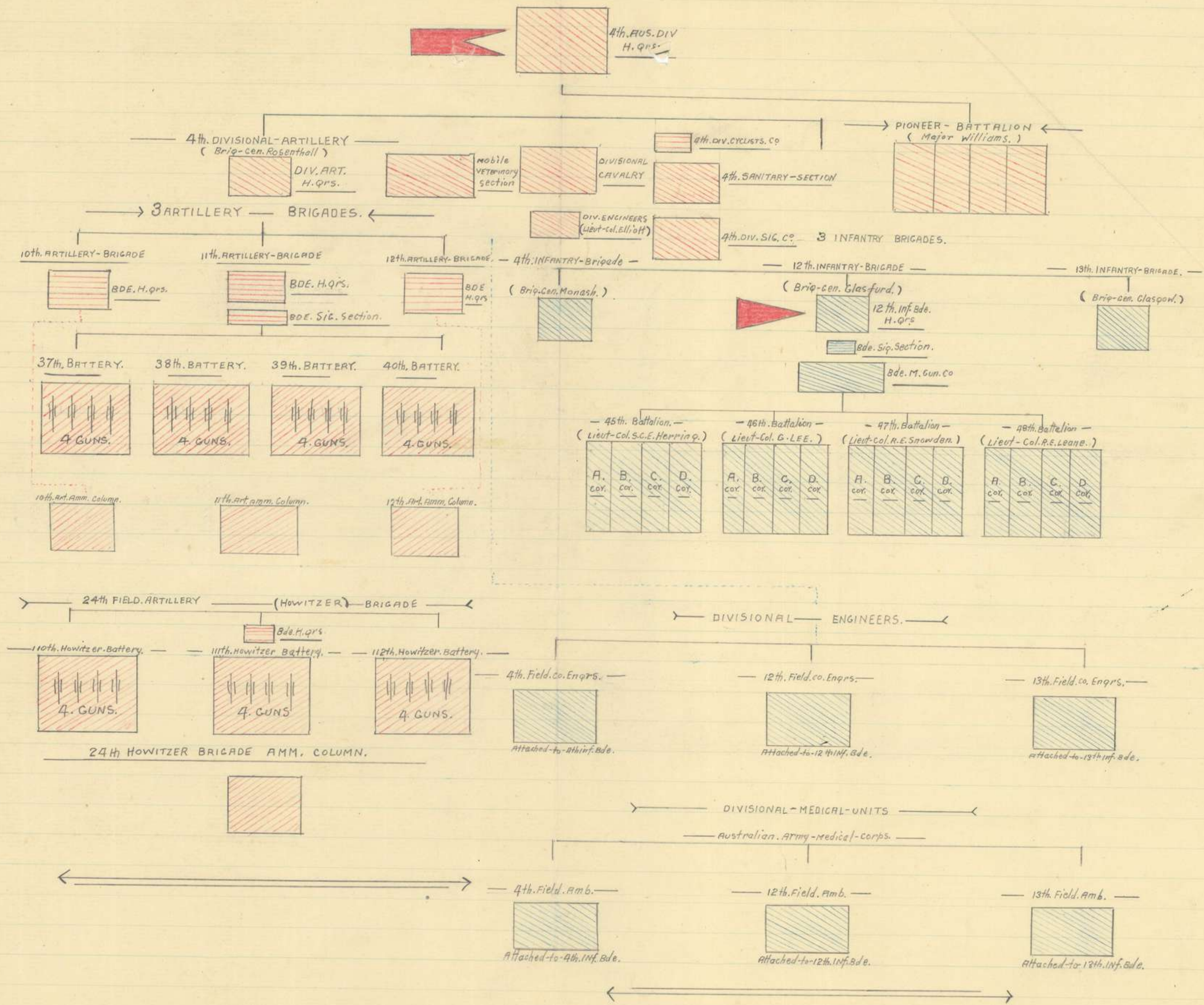
(Erase heading not required.)

Place	Date	Hour	Summary of Events and Information	Remarks and references to Appendices
SERAPEUM	25 th 26 th		Night operations continued & concluded with an attack at Dawn on the Canal defences; the object being to test their strength. Lt. Col. Divl Commander expressed his satisfaction with the work carried out. B^{de} Gifts received from Australian Comforts Fund & preparations made to issue these tomorrow and next day.	
	27 th		Preparations commenced for move of 1 st Bde. Battalion & units getting clothing & equipment. B ^{de} commander visited 12 th Training Bn at Tel el Kebir and issued some instructions. The 2 nd reinforcements for the B ^{de} are very good type of men.	Appendix VII A
	28 th		Dinner service. Divl Grenadier competition took place at 5 pm. 47 th Bn won 2 nd Prize.	
	29 th		4 th Division reviewed by Gen Sir A. Murray C-in-C of the Mediterranean forces. 12 th Bde was especially complimented for its smartness & steadiness in parade.	Appendix VII B
	30 th		Preparations for move continued. Instructions for 4th Bde Instructions for 4 th Bde issued for move.	APPDX VII C
	31 st		Brigade baggage moved to SERAPEUM & ready for loading on Trains.	APPDX VIII









appendix I

COPY INSTRUCTIONS IN CASE OF ALARM BEING SOUNDED

Railhead,
30/X4/16

Owing to enemy activity the brigade may have to turn out for action at short notice. In event of alarm being sounded battalions will parade on their alarm posts in marching order without packs. 200 rounds S.A.A. will be carried, also one day's tinned meat and biscuit and full water bottle. O.C. battalions will therefore ensure that their unit can parade on its alarm post ready to move within half an hour of alarm. All water bottles will be filled immediately after the evening meal. It is suggested that in order to save time this should be carried out by ~~mess-orderlies~~ messes; the mess orderly immediately after tea should see his camp kettle or kettles filled with water, and the men of his mess should fill their bottles by using empty jam or fruit tins. It should be impressed on the men that their water bottles should not be used in camp overnight but kept filled in case of having to turn out on march with the least possible delay.

As soon as men return from the evening parade they should immediately detach their pack from their equipment, as in the event of having to turn out, they would dress in marching order minus the pack.

All ammunition and iron rations will be stored in company stores ready for issue. Battalions will be tested in turning out ready to move on alarm parades.



1. Duplicate War Diary

Note on front line defences, Section II Sub-section A, for information of 12th Infantry Brigade, on taking over.

1. The front line defences Section II, Sub-section A are now held by 12th Infantry Brigade and 4th Pioneer Bn. as shown on sketch map; details of the garrisons of each work are appended.

2. The works in this subsection were originally prepared for a garrison of 1 division to which certain heavy artillery was to be added. The general line was laid out by Colonel P.G. Grant on the principle that, since according to experience in Europe no work could be captured unless it had been heavily shelled, trenches must at any *cost* be concealed from hostile artillery. In the original system of defences, therefore, the works were sited on the reverse slopes of hills (i.e. behind the crest) where they had a very limited frontal field of fire - sometimes not more than 40 to 60 yards and hardly ever more than 150 yards. But, although there was no field of fire to the front, the whole system of front line defences with their "strong points" in rear was so arranged that every work supported and was supported by its neighbours. This excellent mutual support was a very marked feature of the line laid out by Colonel Grant.

3. After work had been begun on the original scheme, several senior commanders, as well as some of the officers who were to hold the works, objected to the short frontal field of fire on the grounds that they wanted to see their enemy before he was within 50 or 100 yards and that in this theatre of war, the trenches were not likely to be subjected to heavy artillery bombardment as in Europe.

4. Consequently, the original principle was abandoned. On the left half of the sub section, (HABBITA to KATHIB EL KHAIL) the original works which had been completed were allowed to stand and eventually got silted up with drift sand, while new works were begun, sited so as to obtain an average frontal field of fire of 400 yards. On the right half of the subsection, (HABBITA to HABASHI), however, little change was apparent.

The changes effected in the siting of the works secured the advantages of frontal field of fire, but on the other hand a great deal of the excellent mutual support was lost.

With the beginning of summer, it was considered that the advance of the enemy on a large scale became more unlikely and that warning of any movement on his part might be confidently expected. The garrison was consequently reduced and the line was held as an outpost line.

5. After the garrison was withdrawn, most of the works were abandoned and they quickly filled with drift sand as the result of Khamsheen winds which are prevalent at this time of year - February to April.

6. When 12th Brigade arrived at Railhead about the beginning of April, the 3rd Light Horse Brigade held portions of sixteen important works with about two regiments and nine machine guns, on a front of over twelve miles. The remainder of the works were abandoned and allowed to fill with sand - only the bits of works actually occupied were kept in order.

7. During the greater part of April, the line was held as an outpost line by the 3rd Light Horse Brigade, with one battalion 12th Infantry Brigade in support and the remainder of the latter Brigade in reserve at RAILHEAD. The Light Horse were responsible for observation and protection by day; by night, certain works were held by the infantry - strength about one platoon in each of the more important works, the gaps being patrolled and standing patrols posted in lesser works.

On 30th April, the 4th Pioneer Battalion took over the right subsection, the 6th battalion being moved northwards to strengthen the left subsection. When this re-distribution had been effected

the line was held as under; there were still big gaps in the line, which were patrolled.

Right sub-section		Left sub-section	
62 d	K1 aa		
62 c	K1 a	1	L1 a
62 b	K1 b	2	L1 d
61 b	K1 e	3	L1 g
59	K3 a	S3 a	L1 h
58	K3 c	4	L3 b
553 b unnumbered (Ked)			
57	K5 a	5 a	L3 h
55	K5 d	7	L5 a
53	K5 h	8	L5 e
		9	L5 g L5 h
			L5 k L5 m
			L5 n
			L5 n (auxiliary)

8. On 5th May, the remainder of 12th Infantry Brigade was ordered to the front line, when the present distribution was effected as shown in appendix I, attached.

From 5th May onwards the front line works were improved and strengthened as under :-

- (i) Firing positions cleared for actual strength of garrison and field of fire improved.
- (ii) Wire entanglements for close protection of works completed.
- (iii) Wire obstacles, trip wires etc. laid in the wadies between works and rather to the front of general line, in order to delay and give warning of enemy's approach.
- (iv) Signal communication completed and improved.
- (v) Ranges taken and range marks fixed etc.

Under existing circumstances, the ruling factor was the urgent need to get something done quickly in order to be ready for the expected Turkish attack which was timed for 12th May.

This entailed a great deal of work, as most of the trenches had filled with sand. The field of fire was very restricted, partly owing to the original siting and partly owing to sand drifts which had formed among the original wire entanglements so that, in many places, the men holding a work could see nothing beyond their own wire.

9. In order to get a better field of fire, certain new works were constructed in advance of the original line; these advanced works are of very simple design, see appendix II; the average time taken to construct them was about 5 hours, or under one days work instead of about a fortnight^{as} in the case of the original deep works with anchored revetments. These advanced works, in a few cases, are joined to the original works by communication trenches, so that they are capable of an obstinate defence. In most cases, however, they are intended only to screen the original main works and instructions have been issued that their garrisons are to hold them as long as they can without being out off. The occupation of these advanced works ought to gain time for us and increase our observation and power to damage the enemy as well as to hinder enemy reconnaissance and observation and to prevent him locating our main works.

Briefly, our plan of action in case of attack is to man our advanced and main works, to do all possible damage to the enemy, and to hold to the last the main line of entrenched works, in order to fix the enemy and give our mobile column time to locate and strike him. The reserve battalion, and the troops in hands of battalion commanders, would be used to restore the fight by means of local counter attacks, while rallying positions exist in rear of works 62, 1 and 7. In case of attack, Battalion Headquarters would be disposed as under :-

4th Pioneer Battalion	in work	58	K5 e
45th Bn.	in rear of	55	K5 d
48th Bn.	" " "	3	L1 g
46th Bn.	" " "	7	L5 a

Warning of intended enemy attack may be expected from our air-craft and from our Light Horse standing patrols; in addition the



infantry find day observation and night sentry groups in front of our line and the intervals between the works are frequently patrolled at irregular intervals throughout the night (see details of each post handed over).

A diagram of existing communications and plan showing position of Light Horse standing patrols has been handed over.

10. It remains to put on record some remarks which may be of interest to you.

It seems doubtful whether the elaborate design of the original works is suited to the prevailing conditions here. The construction of these deep works take up a great deal of time and material and it is very difficult to keep them free from drift sand. Exposure to wind and weather rots the top layers of sandbags which leak badly and lose all their contents. One days "Khamseen" wind sufficed to obliterate all traces of several deep works and also created new sand hills. Barbed wire entanglements are very conspicuous and are quickly covered by banks of drift sand which decreases their value as obstacles and blocks the field of fire. It remains to be seen whether the form of more hasty defences, imposed upon this brigade by the time limit, are any more satisfactory in this country; but in their favour it may be urged that they were all that it was possible to construct in ~~48~~ the limited time available (5th to 10th May), they will be easier to clear of sand, they have a better field of fire, they are not very conspicuous, and they afford quite good cover for, say, a one day's battle.

Wire entanglements have been put up with two objects in view (i) The close protection of works (ii) An obstacle to block the wadies and gaps in front of the main line of works to delay the enemy, give notice of his approach and break up his formations. The execution has not been entirely to my satisfaction, my difficulty has been to control untrained initiative and consequently there is a good deal now standing that required to be altered. If I were staying here any longer, I would remove some of it and re-lay it so that it is either within earshot of sentry groups or under fire, or both, and placed so that the enemy could not crawl through or cut it. The French wire is inconspicuous but needs to be combined with barbed wire to constitute an efficient obstacle.

HASSETT)
18.5.1915)

Duncan Gasford B.S.

Duplicates



12th Bde

R. J. Barrett *Duplicate* Capt

Appendix III

Copy No. 3

12th INFANTRY BRIGADE ORDER NO. 20

HABBITA,
15th May 1916.

1. The brigade will be relieved by the 13th brigade on the 16th and following days. Moves will be carried out under regimental arrangements; the destinations each night will be as shown in the attached table. Marching in the heat of the day is to be avoided.

2. The portion of the brigade concentrated at Railhead will be available, if necessary, for a mobile column.

3. All tents and tools on unit charge, trench stores, reserve ammunition, reserve supplies, water stores etc. in the front line will be handed over to relieving battalions. Latrines, kitchens etc. will be left standing, except in the case of 47th battalion. Two hundred rounds S.A.A. will be carried on the man.

4. Each battalion and machine gun section now in the front line will hand over to the relieving unit written notes giving full details of all tactical and administrative arrangements e.g. distribution of garrisons of each post, sentry groups, patrols, day and night dispositions, arrangements for tours of duty and reliefs, ammunition, water, work in hand and to be completed, plan of action to meet attack, maps or sketches and range cards.

5. On arrival at RAILHEAD units will arrange to break up their details camp and move all baggage and regimental stores to their permanent destination i.e. 45th and 46th to staging camp, SERAPEUM; remainder of brigade to original camps at RAILHEAD.

6. Reports to HABBITA until 0900 on ^{15th} instant; after that to RAILHEAD. CAPTAIN

W. J. Barrett
STAFF CAPTAIN 12th INFANTRY BRIGADE.

Copy No.	1 to 3	12th Infantry Brigade	filed
"	4	45th battalion) by despatch rider at 0915.
"	5	46th	
"	6	47th	
"	7	48th	
"	8	4th Pioneer battalion	
"	9	12th bde. M.G. Coy.	
"	10	G.O.C. Railhead	
"	11	4th Aust. Div.	
"	12	13th Inf. Bde.	

ISSUED WITH BRIGADE ORDER NO.20 15/5/16

UNIT	MONDAY 15th	TUESDAY 16th	WEDNESDAY 17th	THURSDAY 18th	FRIDAY 19th	SATURDAY 20th
BDE.H.Q. SIG. SECT. BDE.M.G. Coy.)) F.L.	F.L.	R.H. F.L.	R.H.	R.H.	R.H.
45th BN.	F.L.	F.L.	F.L.	R.H.	S.C.	S.C.
46th BN.	F.L.	F.L.	R.H.	S.C.	S.C.	S.C.
47th BN.	F.L.	R.H.	R.H.	R.H.	R.H.	R.H.
48th BN.	F.L.	F.L.	F.L.	F.L.	R.H.	R.H.
PION. BN.	F.L.	R.H.	S.C.	S.C.	S.C.	S.C.

NOTES.

F.L. means Front Line

R.H. " Railhead

S.C. " Staging Camp.

Camps will be pointed out by the Brigade Staff ~~Captain~~. Each unit will leave a party to clean camp and report to Staff Captain.

W. Hughes CAPTAIN.
STAFF CAPTAIN 12th INFANTRY BRIGADE

Duplicate

Appendix IV

AMENDMENTS TO

15th INFANTRY BRIGADE ORDER NO. 21

(a) Paragraph 2 (1) delete "1 waterproof sheet" and insert
"or great coat".

i.e. 1 blanket or great coat will be carried, choice is left
to C.C. Battalion.

(b) Paragraph 5 (1) delete all and substitute

5 (1) All units will assemble on their regimental parade grounds
and await orders.

Please certify these amendments have been made.

(SGD) W. INGLIS 2nd Lieutenant

STAFF CAPTAIN 15th INFANTRY BRIGADE.

RAILHEAD,
19th May 1916

1. (i) A Mobile Column, composed as under, will be organized at RAILHEAD to operate east of the front line, if required.

Commander : Brig-Genl. Antill C.B. commanding 3rd L.H. Brigade

5 12th Infantry Brigade (less 2 battalions)

1 section, Inverness-shire Battery R.H.A. (Guns only; 76 rounds per gun on camels)

2 squadrons, 3rd Light Horse Brigade.

Detachment, Engineers.

Wireless Telegraph section.

Part of 3rd L.H. Field Ambulance

Medical convoy.

(ii) Infantry battalions will march out 800 strong; Lewis guns will not accompany battalions. 12th Brigade Machine gun company will march out with 4 guns only.

2. (i) Infantry will carry, on the man :- 1 blanket, 1 water-proof sheet, 1 sandbag, haversack and waterbottle filled and one day's reserve ration. No packs will be carried.

(ii) 120 rounds ammunition will be carried on the man; 200 rounds a man (regimental reserve) will be carried on camels.

(iii) For each machine gun, 3500 rounds ammunition will be carried with the gun and 6000 in reserve.

(iv) Officers commanding units are responsible that ammunition, as above, is maintained and inspected daily by company commanders; units are also responsible that their own reserve ammunition is loaded on camels; which will be provided.

(v) Sandbags and reserve rations will be drawn and held in company store, ready for immediate issue.

3. (i) Two days supply for men and horses)
one days water for horses) Will accompany
Two days water for men) the force.

(ii) Camels and fantasses sufficient for the column to start will be maintained at RAILHEAD.

4. On the column being ordered to prepare to move, officers commanding units will send an officer to draw camels from the Camel Transport Corps, as under :-

Unit	Allotment of Indian camels	
	Camels	Loads
Brigade Headquarters	2	Officers baggage, office, and Signal gear.
47th battalion Total	27	160,000 ^{rounds} S.A.A. one camel with only 4 boxes S.A.A. will carry signal equipment.
	32	
	2	Sandbags (1250 each)
	1	Camp kettles (men and officers)
	1	1-camel 100 shovels and picks.
	1	To brigade headquarters for shovels and picks.
48th battalion (same as 47th Bn.)	32	Same as above.
Machine gun company	11	Machine guns, equipment and 38,000 rounds S.A.A.

These camels, when loaded, will remain with their unit under an officer, to be detailed by O.C. unit. Orders will be issued for the transport to be collected, under a Q.M.S. of each unit, at a point of assembly, with an escort of one troop, Divisional Cavalry; the whole under the orders of the senior Major, 47th battalion.

5. (i) The column will form up as under :-
Infantry in mass, north of road 400 yards east of 3rd Light Horse Brigade Field Ambulance; right of infantry on road.
Engineer detachment - on right of infantry
Wireless Telegraph Section - on left of infantry.

(2)

(ii) The infantry will form in mass, machine gun company on left, 47th battalion on right, Brigade headquarters and Signal ~~section~~ section in front of 48th battalion.

6. No memoranda, letters, orders etc., which would give information to the enemy, are to be carried. A map and blank note book is all that is required. Magnetic compasses, field glasses and electric torches will be carried where procurable.

7. The task allotted to this column will be of the a most arduous nature. It is essential, therefore, that all personnel and animals should be thoroughly fit and strict march discipline enforced. Special attention is directed to the instructions for night marching which must be regidly adhered to. Strict silence and order must be maintained; no lights; no smoking; no rifles to be loaded at night. Arms will be inspected before moving off.

8. Communication will be maintained by means of wireless and visual signalling.

Reports to 12th Brigade headquarters at head of column; if circumstances require units of the brigade to communicate direct with outside units, copies will be sent to 12th Brigade Headquarters with the least possible delay.

9. The necessity for all available information to be recorded frequently and rapidly emphasized.

These instructions are to be explained to all ranks without delay.

W. INGLIS Staff Captain

12th INFANTRY BRIGADE.

Issued to at

Copy No. 1	to	4	retained	
5			47th battalion	
6			48th "	
7			3rd L.H. Brigade	
8			12th Brigade M.G. Coy.	
9			4th Aust. Div.	

RAILHEAD,
24/5/16

1. The brigade will take part of night operations on the nights 24/25th and 25/26th. The General and Special Ideas have already been issued; each officer and platoon sergeant will be provided with a copy under regimental arrangements.

A copy of "general instructions" by 4th Australian Division dated 2nd May is issued herewith.

2. The 45th and 46th battalions will march from Staging Camp to Rendezvous under arrangements made by G.O.C. 4th Brigade; these battalions will rejoin 12th Brigade at tonight's rendezvous.

3.(i) The remainder of the brigade will march, this evening, to Rendezvous alongside and to the north of the SERAPEUM road, west of camp.

(ii) Starting point, marked by two blue flags on SERAPEUM road immediately in rear of 12th Machine Gun Company Camp.

Times.	Brigade Headquarters and Signal Section	1815
	12th Brigade M.G.Coy.	1820
	47th battalion	1825
	48th "	1830
	Bearer Section 12th Field Ambulance	1835.

4. The following vehicles, only, will be taken :-

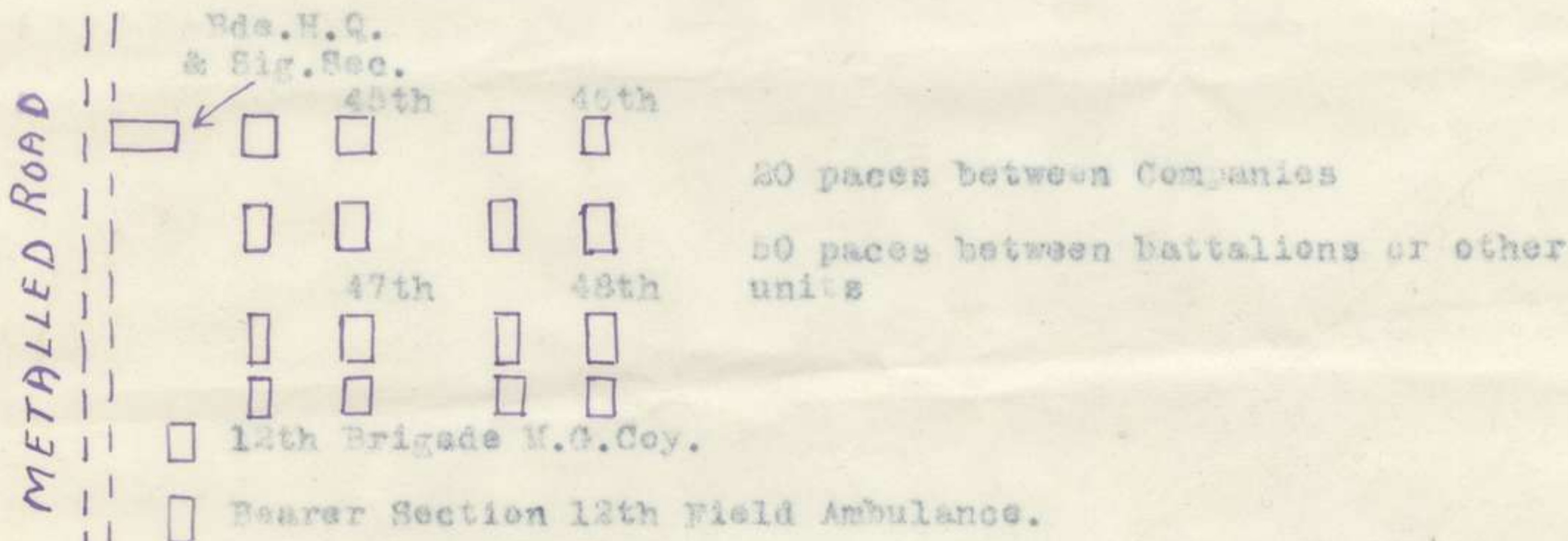
2 limbered wagons carrying brigade tool reserve

Gun wagons of 12th Brigade M.G.Coy.

Technical wagons of Brigade Signal Section

2 tool wagons from each battalion.

5. On reaching Rendezvous, the brigade will be formed as under, facing west :-



6.(i) The brigade will not return to RAILHEAD; on completion of night operations a new camp will be established on the site vacated by 13th Infantry Brigade, near SERAPEUM.

(ii) Tactical and administrative instructions are attached - 3 appendices.

7. Reports to Brigade Headquarters.

CAPTAIN
STAFF CAPTAIN 12th INFANTRY BRIGADE.

Copy No.	1 to 3	Brigade H.Q.	by	time
	4	45th		
	5	46th Bn.		
	6	47th Bn.		
	7	48th Bn.		
	8	12th Bde. M.G.Coy.		
	9	12th Field Ambulance		
	10	4th Brigade		
	11	4th Aust. Div.		

12th INFANTRY BRIGADE

TACTICAL INSTRUCTIONS

1. Night operations combined with an attack on the inner line defences will take place, commencing at dusk on Wednesday 24th inst. For the sake of instruction, operations will be suspended in the middle, (on receipt of orders from the G.O.C. Division) and will be concluded in the early morning of Friday 26th inst.

2. General and Special ideas will be issued to all concerned.

3. White force under the command of Lieut-Colonel Cannon, C.B., will consist of 15th battalion and 4th Pioneer battalion, with a certain proportion of artillery.

4. 4th and 12th Infantry Brigades will be under the command of Brig-General Monash C.B., V.D. They will not take first line transport except machine guns and tool carts, including Brigade reserve tools. Those of the brown force who are in camp at the Staging camp will move out so as to reach their point of concentration near RAILHEAD by dusk, under arrangements to be made by G.O.C. 4th Infantry Brigade. O.C. 4th Divisional Signal Coy, will send 2 cable wagons to join 4th Infantry Brigade Signal Section during the afternoon of the 24th inst.

5. Brigadier General Rosenthal will be chief umpire - White. Lieut-Colonel Elliott, Chief umpire, Brown.

Assistant umpires will be found as under :-

WHITE - O.C. Cyclist Company
O.C. Divisional Squadron
2 officers P.A.

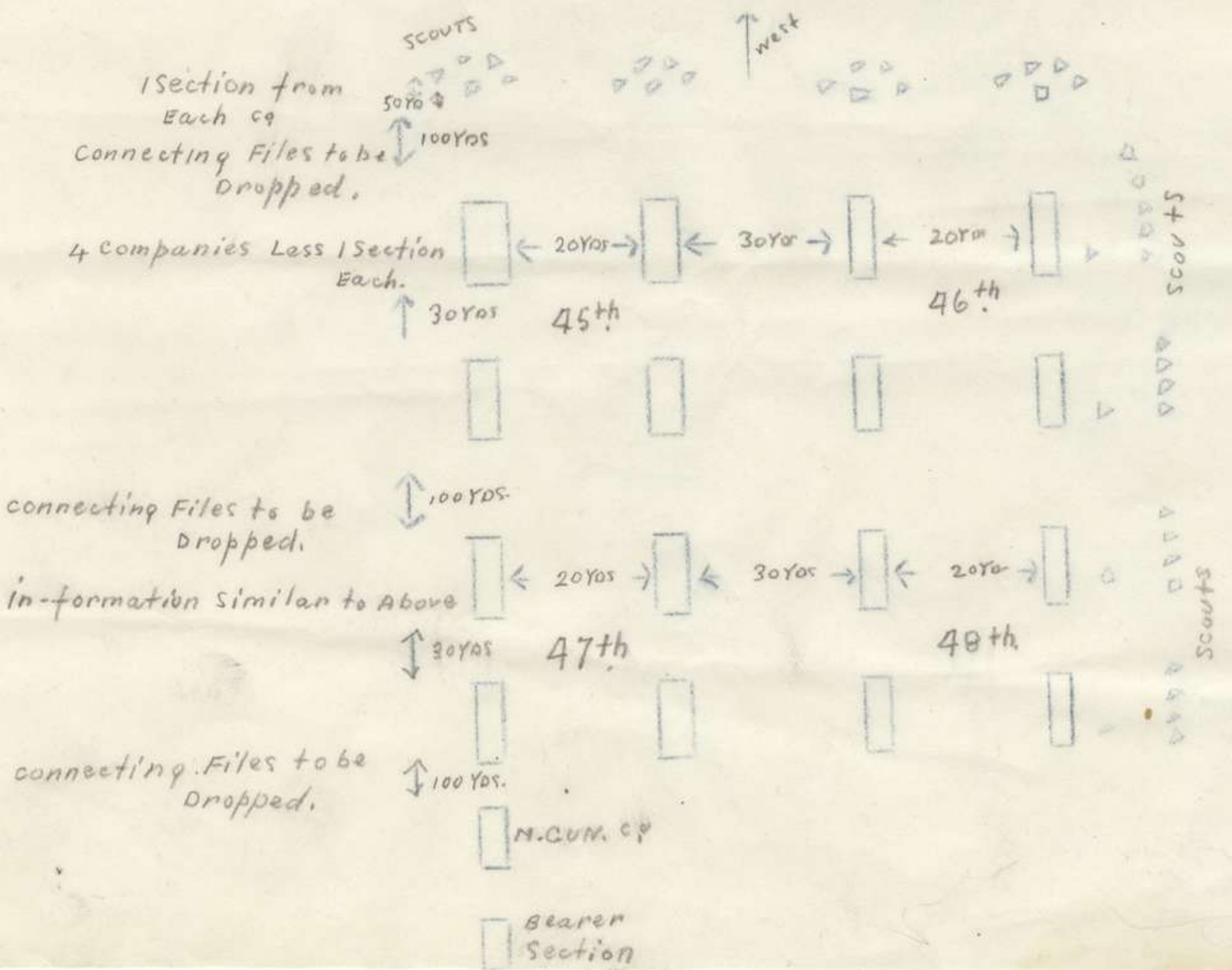
BROWN - 4 officers 3rd L.H. Brigade.

Chief umpires will issue necessary instructions to their assistants umpires direct, and tell them when and where to meet them.

6. It is hoped that blank ammunition will be available. Further orders regarding this will be issued.

7. Orders for the advance and further operations will be issued at the Rendezvous.

8. The Brigade will march westward from the Rendezvous in the following formation :-



9. If no opposition is met with, the east edge of the morass should be reached by 2130 and then, or earlier if stopped by enemy fire, picks and shovels will be distributed. The final advance should be ready to commence about 2230. Moonrise is at 0130, so there will be only three hours complete darkness for the advance close to the enemy's position and for digging in. This should, however be enough to get sufficient cover to enable the trenches to be safely completed in the growing moonlight.

A useful type of trench is the Zig Zag - with each face about 20 to 30 yards in length at an angle of about 110 to 120 degrees.

Each man engaged in night operations will carry two empty sand-bags - on the man.

All units without picks and shovels will dig with entrenching implement.

The advance to position of trenches will be covered by strong line of skirmishers, whose role is to drive in the enemy's outposts. This must be done with the bayonet. Any attempt at a fire fight will hold up the advance and play into the enemy's hands.

When further advance is stopped, digging units will creep up as closely as possible to the line of skirmishers before commencing to dig.

Daybreak is at 0345. By 0300 sufficient length of trench should have been dug to accommodate at two men per yard, twice the number of the original digging units. Thus, in each wing of the attack, two battalions in line, the two leading companies of each battalion could dig (together) say 400 yards of trench (200 yards in all) - while the two rear companies dig themselves in, well in rear (say 500 yards) with their entrenching implements.

When the front trenches are sufficiently advanced, the supporting companies should be dribbled up in small parties, and preparation made for the final bayonet and grenade assault, which, if all goes well, will be regulated by a named clock time, probably just before dawn. The dispositions proposed ^{are} illustrative only and not binding on commanders, who must be guided in their dispositions by the ground and the volume of fire to which they are exposed.

During the digging machine and Lewis guns must be disposed so as to be able to engage the enemy trenches (firing at the flanks) and to keep down enemy fire. During the assault, they must be ready to give covering fire. The machine guns should seek commanding positions on or near the outer flanks, and some may be placed in rear of our trench line. Guns should not be advanced to their most forward positions until some cover has been prepared for them.

Immediately after the assault, guns should move forward rapidly to assist in pursuit by fire.

The thrust of the assault should be directed straight at the bridge so that the high ground commanding same can be seized first and the further use of the bridge denied to the enemy, so as to cut off his retreat. His elements still remaining on the east bank can then be dealt with.

10. The distribution of tools in the dark is difficult and requires careful planning beforehand. There should be as little movement as possible, and no movement of party back to get tools. As soon as digging is ordered, each unit should form a tool depot whose position is known to all concerned. To this depot will be sent the battalion Tool Carts, also those of other battalions which may be directed to do so, and one or both wagens of the brigade tool reserve as may be ordered by brigade. Working parties with rifles along march with pick in left hand, shovel in right hand, both at the trail, tool end to the front. It is of the utmost importance that there should be no clanking of the tools or any other noise.

As, during this exercise, it will be inevitable that vehicles will have to draw off the road into desert sand, the following is suggested as the arrangement necessary for fully loaded vehicles, viz :-

G.S. wagon for tools - 8 horses or 8 mules each.

Limbered wagon with tools or guns - 4 horses or 6 mules each.

11. The essence of night operations is secrecy :- no talking - no smoking - no lights - no unnecessary movement.

12. Each Lewis or machine gun should be accompanied by a large empty tin or drum, to be loudly beaten whilst the gun is firing.

13. Signal service complains that many messages and particularly names and signatures handed in for transmission are most difficult to decipher. Important as this defect is at all times, it is particularly so during active operations, when time is of the utmost importance. It is especially important at night.

14. Bayonets will not be fixed throughout the manoeuvres, (see T. & W. Regs. section 70 para. 4) - But it must be explained to all troops that the fixing of bayonets is omitted for safety only during ~~manoeuvres~~ manoeuvres.

R. L. Larrant CAPTAIN

for / STAFF CAPTAIN 12th INFANTRY BRIGADE.

Copy

APPENDIX II

12th INFANTRY BRIGADE
ADMINISTRATIVE INSTRUCTIONS

V

1. (i) The Brigade will move to the camp vacated by 13th Brigade near Serapeum. The 43rd battalion will occupy the most westerly site; the 47th between the 43rd and 45th.

(ii) Troops will parade in marching order without blankets or waterproof sheets. Water bottles will be filled.

(iii) In order to avoid the possibility of men having ball ammunition in their possession during the night operations, each company commander will render a certificate on parade that he has inspected the rifles, pouches, haversacks and pockets of his men and that they have no ball ammunition in their possession.

2. An advance party consisting of one Quartermaster, 2 N.C.O. and 25 men, exclusive of cooks, from each battalion will proceed to Serapeum by road leaving Railhead at 1430 today. Cooks and cookers will accompany the party.

They will be marched under proper control by the senior officer and strict march discipline enforced.

3. Camp will be struck at 1500. All blankets, waterproof sheets, kit bags, tents, Quartermasters stores, and excess baggage will be placed in dumps alongside railway opposite battalion camps and guarded under regimental arrangements.

This will be moved to Serapeum as railway transport is made available; a guard will be sent with each consignment.

Blankets and waterproof sheets of all units will be despatched before any stores or baggage.

On arrival at destination baggage and stores will again be placed in dumps alongside railway and guarded.

4. Half the latrine seats of units now in camp will be sent ahead, this afternoon to the new camp. The remaining latrine seats will be collected after the ~~troops~~ leave camp for despatch to Serapeum.

5. Each unit will leave a rear party of one officer and ten others to clean up camp and fill in latrines.

CAPT CUDDEN 48th battalion will be in charge of the rear parties and will be responsible that the above arrangements are carried out and that the camp is left in a thoroughly clean and sanitary condition.

6. Bread, meat, grocery and forage ration for 25th inst. will be drawn at Railhead. Wood and water for the 25th and all future rations will be drawn at Serapeum.

Wm. J. J. J.
CAPTAIN
STAFF CAPTAIN 12th INFANTRY BRIGADE.

12th AUSTRALIAN INFANTRY BRIGADE ORDER NO. 23

25th May 1916

1. The enemy strongly entrenched and supported by artillery are holding a position covering the SRAPSUM bridge.

2. The Brigade in conjunction with the 4th Brigade on our left and south of the Morass will attack their position tomorrow evening the exact time will be notified later.

3. The 47th battalion will attack the enemy's left flank. The 48th, 45th and 46th battalions (in order from left to right) will make a frontal attack in the lines finding their own support. Grenade parties will be organised under battalion arrangements.

48th
2 coys.
| | | |
2 coys.

45th
2 coys.
| | | |
2 coys.

46th
2 coys.
| | | |
2 coys.

47th.
2 coys.
| | | |
2 coys.

4. O.C. Bearer section will establish a dressing station near Brigade H.Q.

5. Reports to Brigade H.Q. at north east corner of Morass.

W. A. L. J.

CAPTAIN

BRIGADE MAJOR 12th INFANTRY BRIGADE.

Issued at

Copy No.	1	retained
	2	48th Bn.
	3	45th Bn.
	4	46th Bn.
	5	47th Bn.
	6	O.C. Bearer section
	7	O.C. Signal Coy.
	8	<i>Br. H. G. C.</i>

The C.O.C. noticed the following points during last night's operations:-

1. STARTING POINT Every unit paraded at least ten minutes too early. In France this would certainly block traffic and cause immense inconvenience.

2. MARCH DISCIPLINE Some men of all units started out of step at the beginning of the march on the hard high road and men were straggling in their sections of fours.

At 0400 on 25th there was more excuse for bad marching but it ought not to have been as bad as it was when entering the present camp.

This is just the time when march discipline and good officers show up to the credit of their companies and some units showed that good march discipline can be maintained to the very end.

3. CLOTHING AND EQUIPMENT Our equipment and clothing requires still more careful fitting and boots require dubbing to prepare them for the European climate. We have a few days still remaining and O.C. units should take steps to make the most of the opportunity.

W. A. L.

CAPTAIN

BRIGADE MAJOR 12th INFANTRY BRIGADE.

25/5/16

incomplete

appendices

incomplete

for

appendices

duplicate

for

War Diary

Duplicate War Diary

CAPTAIN

[Handwritten signature]

BRIGADE MAJOR GENERAL [illegible]

22/2/10

12th AUSTRALIAN INFANTRY BRIGADE.

Instructions for Night Operations 25/26th May.

1. Operations will be resumed at 0330 to-morrow, Friday; dispositions and communications to be same as when we discontinued this morning.
2. All commanders are responsible that personnel are roused so as to be ready for instant action at 0330, at which hour patrols will be sent out ascertain if enemy is still in occupation of the positions he held last night.
Wherever possible further ^{ground} must be promptly taken and entrenched with entrenching implement with a view to assault and grenade attack upon enemy's inner defences.
The time fixed for final assault will be notified.
3. Watched to be checked at Brigade Headquarters.
4. On the conclusion of the operations the G.O.C. will sound the "Stand Fast", followed by "No Parade" and "Officers Call".
On the second call all troops will be marched to camp and officers, except one per battalion, will meet the G.O.C. inside the inner line on the high ground near the road.

Serapeum.
25/5/16.

(Sqd.) E. L. Sahier
BRIGADE MAJOR 12th AUSTRALIAN INF BRIGADE
Captain.

Spec copy

Appendix VII

Copy No.

12th AUSTRALIAN INFANTRY BRIGADE ORDER NO. 24

SERAPSUM,
28/5/18

1. The brigade will parade tomorrow morning to practice ceremonial for the review by the C. in C.

2. Units will pass the starting point - the north east corner of 4th Brigade camp waked - marked by ~~by~~ blue signal flags in the following order :-

45th Battalion	0630
46th "	0635
47th "	0640
48th "	0645
Machine Gun Coy.	0650.

3. C.C. Signal section will report to C.C. Divisional Sig. Coy. For orders.

4. Slouch hats will be worn; brim turned down with the badge in front, khaki drill coats, serge breeches and puttees will be worn

5. Right markers from battalions will be at the brigade parade ground at 0615.

6. Battalions will form up in line of quarter columns at 7 paces distance and ten paces interval between battalions. Machine gun company will form up in column of sections. The whole facing north.

7. Order of battalions from right to left :-

M.G.Coy.	46th	47th	48th	45th
---	---	---	---	---
---	---	---	---	---
---	---	---	---	---
---	---	---	---	---

8. Battalions will march past in column ~~by~~ the right at 30 paces distance.

9. C.C. units will impressen their company commanders to give the command "eyes right" and commence the salute on arriving at point A (i.e. the first flag on the saluting base) and the command "eyes front" at point B (the second flag after passing the C in C). Battalion commanders, adjutants, and in command and company command-ers only will salute, particular attention being paid to keeping the right elbow square with the shoulder. S.C.O's. and men are to be again impressed to hold themselves up and to turn their head and eyes to the right and look the C in C straight in the face.

10. Signallers and Lewis gunners will parade with their com-panies. Companies must be equalised and sized from flanks to centre before battalions leave their battalion parade ground.

W. Hall
CAPTAIN
BRIGADE MAJOR 12th INFANTRY BRIGADE.

Issued at		
Copy No.	1	office
"	2	45th battalion
"	3	46th "
"	4	47th "
"	5	48th "
"	6	M.G.Coy.
"	7	C.C. Ede. Sig. Sec.

18th AUSTRALIAN INFANTRY BRIGADE ORDER NO. 25

BRISBANE
29/5/18

1. The Brigade will parade for review by the C in C this afternoon. Dress - drill order, belt and side arms (braces will not be worn)

2. Units will pass the starting point by 4th Brigade Headquarters marked by mounted orderly with lance and red pennant:

45th Battalion	1545
46th "	1550
47th "	1555-1558
48th "	1559
M.G. Coy.	1605

3. Eight markers from battalions will be at brigade parade ground at 9414 1515.

4. Battalions will form up in line of quarter columns at seven (7) paces distance and ten (10) paces interval between battalions. Machine gun company will form up in column of sections. The whole facing north.

5. Order of battalions from right to left :-

M.G. Coy	48th	47th	46th	45th
-	---	---	---	---
-	---	---	---	---
-	---	---	---	---
-	---	---	---	---

6. Signallers and Lewis gunners will parade with their companies. Companies must be equalised and sized from flanks to centre before battalions leave their battalion parade grounds.

7. Company commanders and Machine Gun section commanders will not be mounted.

8. Parade states will be rendered by 1500 these to show actual numbers on parade by companies.

W. W. W.

CAPTAIN

BRIGADE MAJOR 18th AUSTRALIAN INFANTRY BRIGADE.

Issued at 1430

- Copy No. 1 & 2 Office
- 3 45th Battalion
 - 4 46th "
 - 5 47th "
 - 6 48th "
 - 7 M.G. Coy.
 - 8 O.C. Sig. Section

appendix VII

by Brigadier Glasford

COPY OF MESSAGE RECEIVED FROM Maj-Gen. Sir. H.V.Cox, K.C.M.G
C.B.C.S.I. Commanding 4th Australian Division.

" I should like to take this opportunity of thanking you and your brigade, and also the 4th Pioneer battalion, for all the good work which you did on the front line. Please have the following communicated to the 12th Infantry Brigade and the Pioneer Bn.:-

The G.O.C. thoroughly appreciates the good work done by the 12th Infantry Brigade and 4th Pioneer Bn. while in the front line. The intelligence and keenness shown by all ranks, and the amount of work done in spite of trying weather conditions, reflect the greatest credit on all concerned".

REVIEW OF 12th INFANTRY BRIGADE BY COMMANDER IN CHIEF

Copy of letter received by Brigadier General Glasford from Major General Gen Sir. H.V.Cox, K.C.M.G., C.B., C.S.I.

"The marching of the 12th Brigade past the Chief was very good indeed. Especially considering the heavy ground and flying sand. Their steady drill was most satisfactory - and does you and them great credit. It is so very satisfactory when the men "play up" as they did to-day, for it shews such a fine spirit. There will be a message from the Chief in orders to-morrow".

This is very satisfactory in view
of the fact that 3 months ago today
(29th Feb) the brigade was not
formed
D.G.

12th AUSTRALIAN INFANTRY BRIGADE ORDER NO. 26

BRIGADE MAJOR GENERAL DUNCAN GLASGOW
COMMANDING 12th AUSTRALIAN INFANTRY BRIGADE

SERAPONG
30/5/16

(Preliminary orders for move of Brigade)

1. The embarkation of the brigade will take place shortly.
2. Tents will not be taken; they will be left standing and tent peg bags will be folded and placed inside.
3. Four copies of special embarkation returns and four copies nominal rolls of those embarking will be required by the embarking staff officer. These should be made out as soon as possible.
4. Vehicles of each unit must be clearly marked in chalk with the name of the unit, each part of the limbered wagons will also be marked. They should be so loaded on the train and on the ships that vehicles of each unit are kept together. A conducting party of one M.C.O and two men from each unit will travel with these vehicles.
5. Special dumping grounds have been prepared at SERAPONG WEST No. 3 siding. Dumps have been numbered and units will be told later their numbers of their respective dumps.
6. All baggage will be guarded regimentally.
7. The weight of baggage allowed for each officer is 60lbs. In addition 100lbs may be taken as far as the base and deposited there. These weights must on no account be exceeded. Any baggage beyond this must be got rid of before leaving.
8. All helmets will be returned to Ordnance the evening before departure of a unit.
9. No kit bags whatever are to be taken except those for returning the khaki drill clothing in. Surplus kit bags will be handed in to Ordnance at once. Arrangements for storing men's surplus private property must be made by G.C. units with Cook & Son or elsewhere. Cook's representative will be at Serapong to-day for the last time.
10. G.C. units will have their men's packs carefully inspected immediately before marching off to ensure that no explosives or bombs are in the packs.
11. One blanket, one waterproof sheet per man will be taken. All surplus blankets will be returned to Ordnance at once.
12. All *sprays and horse* clippers will be returned to Ordnance.
13. Each truck on the railway including vehicle trucks will be carefully guarded so as to prevent anyone tampering with them.
14. No article however small will be left unguarded from the time the baggage is stacked or loaded in camp until it is stowed on the
15. Guards will be told off beforehand to at once mount on arrival of the train at the place of de-trainment and guard the baggage; not only whilst it is on the train but whilst it is being taken to the ships.
16. Commanding officers are held personally responsible that no explosives are either taken or introduced into men's kits or any stores or vehicles. They are also responsible that no cameras whatsoever are taken.

17. On no account is any officer, man, animal or vehicle to be entrained or embarked in excess of establishment.

18. The Brigade Commander wishes it to be impressed by battalion commanders on their officers that the responsibility as regards completion of kits and equipment, checking of baggage to ascertain that nothing is taken in excess, rests primarily with platoon commanders who are responsible to their company commanders. In the same way company commanders are responsible to commanders of units.

19. Troops will embark in khaki drill and felt hats.

20. Each carriage will be allotted as a rule to 8 men.

21. Previous to entrainment men will be told off into sections corresponding with the capacity of compartments provided.

22. The entrainment will be complete 5 minutes before the time of departure.

23. No man is allowed to leave a carriage without permission of an officer on any account whatsoever.

24. Regimental police 2 W.C.O.'s, and 12 men per battalion (all picked men) will be told off to police both sides of the train at each halt to see that order No. 22 is carried out. An officer will be detailed with the police.

25. O.C. units must ensure the speedy evacuation of the railway station at the detrainment.

26. Working parties each under an officer will be detailed beforehand to alight as soon as the train arrives and commence unloading the baggage, vehicles and animals from the trucks.

27. When a unit is to embark the C.O. will detail an advance party and baggage party under a senior officer to command and follow the instructions of the staff officer in charge of embarkation.

28. Steps will be taken to settle the detail of duties, posts of sentries on board and ashore to prevent men leaving the ~~mess~~ embarkation shed or ship. A guard will be mounted from the advance party on the detention room to receive all soldiers under detention.

29. Arms will be stored in the armoury or placed in racks for that purpose. Sentries over arms should be detailed and made responsible for their safety.

30. The S.O. in charge of embarkation will tell the troops off to their messes. The men allotted to each mess will be marched off preceded by a guide who will take them to their mess. On arrival there they will stand their kits in the racks over the mess tables and hang their equipment on the hooks of the ship provided for that purpose.

31. Dinners for the day on which the troops embark will be prepared on board unless the O.C. unit sends notice to the S.O. in charge in sufficient time.

32. Immediately after embarkation officers will satisfy themselves of the proper allotment of their men to berths and messes. That the arms and accoutrements are properly disposed of. The commander of each company is to be present at the first issue of bedding and will be responsible for the amount taken over by him.

33. A list of utensils issued to each mess will be checked by the N.C.O. in charge on arrival at his mess and sign a receipt portion which will be given up by the orderly man at the first issue of rations to the representative of the master of the ship.

34. O.C. Battalions and units should impress on all ranks the great importance that all lights are screened at night time and no smoking whatever is allowed on deck after dark.

35. O.C. units will detail 2 N.C.O.'s. and 12 men who are thoroughly reliable picked men as permanent regimental police. A return will be rendered to Brigade H.Q. showing the names of N.C.O and men chosen.

36.

DISBARBARKATION + Status onboard ship

36. As soon as the ship is alongside the quay sentries will be posted at the gangways and on the quay to prevent soldiers from leaving the ship or quay without special permission.

37. Bedding and mess utensils will be taken in and checked before disembarkation commences.

38. Just prior to the ship coming alongside all troops will be paraded on deck and remain until the ship is berthed alongside. There must be no noise whatever so as to enable the naval authorities to issue orders for berthing the ship alongside.

39. Machine guns as required by the commander of the ship will be posted.

40. Guards and sentries will also be posted as required by the commander of the ship.

W. Baker

CAPTAIN

BRIGADE MAJOR 18th AUSTRALIAN INFANTRY BRIGADE

Issued at

Copy No.	1 & 2 Office
3	45th Bn.
4	46th Bn.
5	47th Bn.
6	48th Bn.
7	3rd. M.G. Coy.

12th AUSTRALIAN INFANTRY BRIGADE ORDER NO. 27

SERAPEUM,
30/5/16

1. The embarkation of the brigade will take place on the night of 1st/2nd June 1916, with three flights.

2. Tea will be the first meal issued on board ships on the day of embarkation. Units embarking will therefore have with them the unexpended portion of the days rations (para. 31 of preliminary order No. 26 cancelled).

3. Attached is a list of train timings for the move of the brigade.

4. A plan showing the numbers of the dumps of each unit is also attached. All kits and baggage will be stacked on the respective dumps under arrangements of the D.A.Q.M.G. 4th Australian Division. An entraining officer will be detailed by each unit to report to a D.A.Q.M.G. at 0930 to-morrow at Divisional Headquarters.

4. Twenty-four hours notice must be given to the S.T.O. for all transport ~~transport~~ requirements. Regimental transport officers will be responsible for conducting vehicles and regimental baggage to dumps. All baggage and vehicles must be at dumps by 1000 on 1st June.

6. All baggage and vehicles ~~must~~ will be guarded under regimental arrangements.

7. Each unit will be at the station a quarter of an hour before the time the train is ready for loading as shown in attached table.

8. The ~~one~~ blanket and one waterproof sheet will be carried on ~~one~~ man.

9. All helmets will be returned to Ordnance by to-morrow evening 31st May.

10. Men undergoing ~~the~~ field punishment will be returned to their units under arrangements made by the A.P.M. on the day of departure, the balance of field punishment will be carried out regimentally. Foot police will be returned to units at the same time.

11. Care must be taken that no men of other units embark with the brigade.

12. Vehicles shown as proceeding in the same train as a unit will be packed in the dumps of that unit and not in the vehicle dumps.

All other vehicles will be massed in No. 10 dump.

Only technical stores and equipment should be loaded on vehicles when entrained.

M. Baker

CAPTAIN

BRIGADE MAJOR 12th AUSTRALIAN INF. BDE.

Copy No. 1	Office
2	War diary
3	45th battalion
4	46th battalion
5	47th battalion
6	48th battalion
7	M.G. Coy.
8	Orderly officer
9	Brigade transport officer

09

S E C R E T.

C.A.Q. 19/8.

MOVE OF 4th AUSTRALIAN DIVISION.

-----No. 6.-----

1. The train timings for the move of the Second Flight are forwarded herewith.
2. The arrangements will be the same as for the First Flight. A plan showing the numbers of the dump for each Unit is forwarded herewith. The plan shows at what hour and date the various dumps will be available for the Second Flight.
- ✓ 3. Vehicles shown as proceeding in the same train as a Unit will be parked in the dump of that Unit and not in the Vehicle dump.

Headquarters,
30th MAY, 1916.

Edmund Brown Lieut-Colonel,
A.A. & Q.M.G.,
4th AUSTRALIAN DIVISION.

-----ooOoo-----



Headquarters,

4th AUSTRALIAN DIVISION,

30th MAY, 1916.

Addressed to :-

C.D.A.
C.D.E.
G.O.C., 4th Inf. Bde.
G.O.C., 12th Inf. Bde.
G.O.C., 13th Inf. Bde.

There is no objection to the C.D.A., C.D.E., and G.O.C., Infantry Brigades, with one Staff Officer, travelling by ordinary train to Alexandria during the period their commands are moving.

One Staff Officer is to be left to travel with last troop train of each command.

Cherushoy

Lieut-Colonel,

A.A. & Q.M.G.,
4th AUSTRALIAN DIVISION.

Secret.

C.R. 18950/Q/2.
Train Timings No. 3.

TRAIN TIMINGS.

for the move of
the
SECOND FLIGHT, 4th AUSTRALIAN DIVISION
on night June 1st/2nd 1918.

No. of Train.	Type.	Loading Station.	Time train ready for Loading	Time leave loading Station.	Destination.	Arrivo.
828/739A	Emergency.	SERAPEUM SIDING.	June 1st 1430	June 1st 1645	GABBARY QUAYS KINFAUNS CASTLE	June 2nd 0100
830A/743	do. 47 ⁴⁵	do.	1715	¹⁸³⁰ 1845	CALEDONIA.	⁰²³⁰ 0245
832A/747	do. 8 ⁴⁰ (46 ⁵)	do.	1915	2040	KINFAUNS CASTLE	0445
838/703	do. 46 ⁵ 5 ³⁰	do.	2110	²²¹⁰ 2240	CALEDONIA.	⁰⁶¹⁵ 0645
840A/707A	do. 46 ¹⁵ 5 ³⁰	do.	2310	June 2nd. 0040	KINFAUNS CASTLE	0915
800A/711	do. 46 ⁵ balance of cargo	do.	0110	June 2nd. 0250	CALEDONIA.	1045
806/715	Flats.	do.	0320	0520	KINGSTONIAN.	1340.

====oo00oo====

S E C R E T.

C.R.18930/0/2.
Train Allotments No.3.

TRAIN ALLOTMENTS.
for the move of the

SECOND FLIGHT, 4th AUSTRALIAN DIVISION
from SERAPEUM SIDING on night of June 1st/2nd.

UNIT.	Offi- cers.	Other Ranks	Animals	Limbd. Wagons.	
<u>1st Train, No. 828/739A for KINFAUNS CASTLE</u>					
45th Battalion,	25	800	-	-	
Divisional Headquarters,	1	21	53	2 Motors	For KINFAUNS CASTLE
Divisional R.E. Hqrs.,	-	3	5	-	" KINGSTONIAN.
45th Battalion,	1	11	13	-	" KINGSTONIAN.
Divisional R.E. Hqrs.,	3	7	-	-	" KINGSTONIAN.
	30	842	76	2 Motors.	" KINFAUNS CASTLE.
<u>2nd Train, 830A/743, for CALEDONIA. leaves 8th 1930</u>					
47th Battalion,	25	700	-	3	For CALEDONIA.
do.	1	11	17	-	" KINGSTONIAN.
12th Field Coy., R.E.,	-	12	17	-	" KINGSTONIAN.
12th Field Ambulance,	3	88	14	-	" KINGSTONIAN.
Pioneer Battalion,	1	18	21	-	" KINGSTONIAN.
	30	829	69	3	
<u>3rd Train, 832A/747, for KINFAUNS CASTLE.</u>					
45th Battalion,	4	130	-	3	For KINFAUNS CASTLE.
Divisional Signal Co.,	5	170	-	-	" KINFAUNS CASTLE.
do.	1	34	47	-	" KINGSTONIAN.
12th Infantry Bdo. H.Q.,	7	16	-	-	" KINFAUNS CASTLE.
do.	-	9	9	-	" KINGSTONIAN.
12th Infantry Bdo. M.G. Coy.	10	143	10	-	" KINGSTONIAN.
46th Battalion,	6	300	-	-	" KINFAUNS CASTLE.
	33	852	63	3	
<u>4th Train, 836/703, for CALEDONIA. leaves 8th 2210</u>					
47th Battalion,	4	280	-	-	For CALEDONIA.
Sqdn. 13th Light Horse,	3	70	70	-	" KINGSTONIAN.
48th Battalion,	20	500	-	3	" CALEDONIA.
	27	850	70	3	
<u>5th Train, No. 840A/707A, for KINFAUNS CASTLE.</u>					
Divisional Headquarters,	21	100	-	-	For KINFAUNS CASTLE.
Sqdn. 13th Light Horse,	3	68	62	-	" KINGSTONIAN.
46th Battalion,	23	680	-	3	" KINFAUNS CASTLE.
do.	1	11	18	-	" KINGSTONIAN.
	48	859	80	3	
<u>6th Train, No. 800A/711, for CALEDONIA.</u>					
48th Battalion,	9	480	-	3	For CALEDONIA.
do.	1	11	18	-	" KINGSTONIAN.
Divnl. Cyclist Coy.	8	196	Bicycles 202.	-	" KINFAUNS CASTLE.
	18	687	18	3 and 202 Bicycles.	
<u>7th Train, Flats (54) No. 306/715 for KINGSTONIAN.</u>					
All vehicles of units ontraining at SERAPEUM SIDING, except those allotted above.					
	37		Four-Wheel Vehicles.	Two-Wheel Vehicles.	
		31		22	

SECRET.

C.R.18950/Q/2.
Table 2.

2nd FLIGHT. 4th AUSTRALIAN DIVISION.

To embark June 2nd, 1918.

<u>UNIT.</u>	<u>H.T. KINFARNS CASTLE.</u>		<u>H.T. KINGSTONIAN.</u>			<u>H.T. CALEDONIA.</u>	
	<u>Offi- cers.</u>	<u>Other Ranks.</u>	<u>Offi- cers.</u>	<u>Other Ranks.</u>	<u>Hor- ses.</u>	<u>Offi- cers.</u>	<u>Other Ranks.</u>
Maximum Accommodation,	100	2450	37	1064	750	103	2156
Divisional Headquarters,	21	100	1	21	58	-	-
Divisional R.A. Hqrs.,	4	10	-	9	15	-	-
Divisional R.E. Hqrs.,	3	7	-	3	5	-	-
Divisional Signal Coy.,	5	170	1	34	47	-	-
Cable Section,	-	-	1	35	30	-	-
Sqdn. 13th Light Horse,	-	-	6	138	132	-	-
Divisional Cyclist Co.	8	196	-	-	-	-	-
12th Infantry Bde. Hqrs.,	7	16	-	9	9	-	-
45th Battalion,	29	980	x1	11	13	-	-
46th Battalion,	29	980	1	11	18	-	-
47th Battalion,	-	-	1	11	17	29	980
48th Battalion,	-	-	1	11	18	29	980
12th Bde. M.G. Coy.,	-	-	10	143	10	-	-
27th Coy., A.S.C.	-	-	5	82	67	-	-
12th Field Artillery Bde.,	-	-	5	400	158	15	182
12th Field Coy., R.E.,	-	-	-	12	17	-	-
12th Field Ambulance,	-	-	3	88	14	-	-
Pioneer Battalion,	-	-	1	18	21	-	-
	106	2459	37	1036	649	73	2142

==== oo00oo =====

Plan of Dumps for 2nd Flight.

New RAILWAY PLATFORM

← To Serapeum West NEW ROAD → To Canal

10	9	8	7	6	5	4	3	2	1
All Vehicles not travelling with Units	4 th Div Cav	48 th Bn.	12 th F. Amb Div Cyl Coy	DIV Sig Coy 12 th Bde HQ and M.G. Coy	46 th Bn	47 th Bn	DRE 12 th F Coy Pioneer Bn	45 th Bn	D.H.Q.

Time Dumps June 1st ← ----- May 31st ----- →
 clear for 0040. 2240. 2040. 1845. 1645. 1645. 1645. 1645. 1645.
 Units