

AWM4
Australian Imperial Force unit war diaries,
1914-18 War

Infantry

Item number: 23/6/35 PART 3

Title: 6th Infantry Brigade

July 1918 Appendices



AWM4-23/6/35PART3

Brigade Headquarters,
25th June, 1918.MINUTES OF CONFERENCE HELD AT BRIGADE HEADQUARTERS
at 8 P.M. on 25/6/18.-

Present :- Brigadier & Staff
 Lt. Col. B.O.C. Duggan, D.S.O., Lt. Col. W.K. James, D.S.O., Major W.J. Eatman, Capt. I.P. Stewart, M.C. O.C., 6th A.L.T.M. Battery.

1. It is intended to advance line South of SOMME, in which we shall take part.
2. Attack will be under a barrage and will be supported by tanks.
3. Attack will not take place for at least 3 days.
4. Zero about an hour before dawn.
5. Artillery will stay on start line for 4 minutes and then jump 100 yards every 3 minutes.
6. 1 in 10 shells will be smoke.
7. Artillery concentration equals one 18 pdr. every 23 yards, besides 4.5 Hows. and Heavies.
8. Tanks move on the previous night to a place of readiness on the VILLERS BRETTONEUX - HAMELBY Road. It will take them 7 minutes to get from there to our front line trench. They will therefore be 3 minutes behind the Infantry at the jump off.
9. 6th Brigade will not have more than 3 tanks.
10. Aeroplanes will possibly attempt to fire Ammunition Dumps in the captured positions.
11. The Brigade will attack with the 23rd Bn. on the right, the 31st Bn. on the left. Objectives were pointed out on map.
12. Commanders of these Battalions will make a reconnaissance tomorrow to determine -
 (1) most suitable location for start line for Artillery,
 (2) most suitable location for "jumping-off" position.
13. Probable Inter-Bn. Boundary.-
 Grid line between .. P.20 and P.26.
14. A point to be decided later is whether the Brigade should be in the line 24 or 48 hours before the attack.
15. A further conference will be held ^{at 9.30 AM} on Thursday morning, at which a decision on the points mentioned in para. 12 above will be made.

Copies to:-
 All Bde. Units.
 War Diary.

W. E. N. Budge Major,
 Brigade Major, 6th Aust. Inf. Bde.

S E C R E T.

6th AUSTRALIAN INFANTRY BRIGADE.
=====


Brigade Headquarters,
27th June, 1918.

Headquarters,
2nd Aust. Divn.

I am enclosing copy of my memorandum to 4th Australian Division. They cannot do anything for us in regard to action of Machine Guns, so I propose, with your permission, getting in touch with our Machine Gun Battalion Commander. The same applied to the 6th Field Coy., which I hope will be placed at my disposal.

I would be glad if arrangements can be made for the two Battalions concerned to be lorried to VAUX for training with the tanks.

The A.D.M.S. 4th Australian Division will no doubt get into touch with our A.D.M.S. regarding evacuation of the wounded.


Brigadier-General.
Commanding 6th Australian Infantry Brigade.

~~SECRET~~

6th AUSTRALIAN INFANTRY BRIGADE

Brigade Headquarters
27th June, 1918.MINUTES OF CONFERENCE HELD AT BDE. HQRS. 9.30 a.m. 27.6.18

Present:- Brigadier, Brigade Major, Intelligence Officer,
Lieut.-Colonels DUGGAN, D.S.O., JAMES, D.S.O.,
Major BAYMAN, Capt. STEWART, M.C. and Lieut.
ROBERTSON, M.C.

1. The locations of certain derelict aeroplanes etc. which can be used as direction marks was given.
2. Direction of 21st Battalion attack ... East
" " 23rd " " South East.
3. Therefore left Coys. 23rd Bn. will necessarily start behind the 21st Bn.
4. C.O., 23rd Bn. said that arrangements would have to be made to gain control of the area west of bank from P.25.d.1.4. to P.25.d.1.8.
5. Start line for barrage and position of jumping-off tapes was decided on.
6. Method of attack by 21st and 23rd Bns. was discussed.

W. G. N. Bondy
Major,
Brigade Major 6th Inf. Bde. A.I.F.

Copies to:-

21st Bn.
22nd "
23rd "
24th "
6th T.M.Sty.
File
War Diary
* "

SIXTH AUSTRALIAN INFANTRY BRIGADE

Brigade Headquarters
1918

93

FIGHTING STRENGTH RETURN, WEEK ENDING.....1918

UNIT.-	"A" Strength excluding Attached.-		"B" Not present with Unit and not at the disposal of C.O. (included in Col. "A")		"A" minus "B" AVAILABLE FIGHTING STRENGTH. (Including personnel of Bn. Transport & Q.M.'s. Stores).		Explanation of Col. "B"
	Offrs.	O.R's	Offrs.	O.R's.	Offrs.	O.R's.	
	21st Bn.						
22nd Bn.							
23rd Bn.							
24th Bn.							

Captain,
Staff Captain for G. .C. 6th Inf. Bde. A.I.F.

Appendix

64
183

(4)

Appendix 64 Bde. 184

C R E T.

FOURTH AUSTRALIAN INFANTRY BRIGADE.

Brigade Headquarters.
28th June, 1918.

Headquarters,
4th AUSTRALIAN DIVISION.

The following are the preliminary arrangements and requirements in connection with the forthcoming operations, based on the conclusions arrived at at the conference on 25th/26th June :-

- (1) For the purpose of reference Zero Day will be called "Z" day, one day before Zero Day will be called "Y" Day and two days before Zero Day will be called "X" Day.

(a) On "X"/"Y" night the Brigade will take over that portion of the Front and Support Lines now occupied by the Right and Centre Battalions of the 13th Brigade together with the Communication Trenches between the Reserve and Front Line systems.

Battalion Headquarters and one half of the 15th Battalion will move into those portions of the Front and Support Lines situated between the Centre Battalion left boundary and the communication trench in P.7.a. and c.

Battalion Headquarters and one half of the 16th Battalion will move into the Front Line between the communication trenches in P.7.a. and P.1.a.

Battalion Headquarters and one half of the 14th Battalion will move into the Support Trench between the communication trench in P.7.c. and P.2.d.

Battalion Headquarters and one half of the 13th Battalion will move into the Front and Support trenches between the 13th Brigade right boundary and the communication trench running through P.1.e. and a.

The balance of the Brigade will remain in the Reserve Area until "Y"/"Z" night when the remainder of all Units will join up.

- (2) Assembly positions. Assembly positions will be a taped line parallel with and 150 yards from the Zero Barrage line already indicated in a former communication.

The assaulting troops will be drawn up on the assembly positions by Zero Hour and on the fall of the barrage will move up under it as close as possible in order to avoid the enemy barrage.

- (3) Disposition of troops for the operations.

The 16th Battalion will deal with VAIRE and HAMEL WOODS.

The 15th Battalion will be detailed to attack on the North side of VAIRE and HAMEL WOODS with their final objective on the BLUE LINE junctioning with the 11th Brigade at approximately P.10.d.5.4. and with its right at approximately P.15.d.9.5.

The 13th Battalion will attack on the South side of VAIRE WOOD and will have for its final objective the BLUE LINE from P.21.c.9.7. to P.15.d.9.5.

The 14th Battalion will be the Reserve Battalion and at ZERO will move to that portion of the Front Line vacated by 16th Battalion and thereafter will move with stores and supplies to a line approximately 500 yards in rear of the BLUE LINE, dump their stores, and proceed to dig the Support Line.

The 16th Battalion when VAIRE and HAMEL WOODS have been completely mopped up will be withdrawn into the old Front Lines now occupied by the Right and Centre Battalions of the 13th Brigade and will become Reserve Battalion.

P.T.O.

- (4) Responsibility for the Defensive Line.
 (a) The 4th Brigade will assume responsibility for the defence of the area now occupied by the Right and Centre Battalions of the 13th Brigade on "X"/"Y" night.
 (b) All elements of the 13th Brigade should be withdrawn from the Front and Support Lines in this area on "X"/"Y" night with the exception of Vickers Machine Guns and nucleus garrisons consisting of Lewis Guns with minimum crews.
- (5) Headquarters. Brigade Headquarters will be established at O.12.b.9.5. (which is the present Headquarters for the Centre Battalion of the 13th Brigade).
 Headquarters for the Battalions are being arranged for in the Front and Support Lines. Their exact localities will be notified later.
- (6) American Troops. It is proposed to allot 1 Company to the 13th Battalion and 1 Company to the 15th Battalion to take part in the attack.
- (7) Dumps. Forward Dumps have already been established at P.13.c.8.5. and P.8.c.2.1. (both these references are approximate only) and are now being filled with the various engineer and other material that will be required in the forward area after the assault has been delivered. Forward dumps will subsequently be established in exact localities yet to be determined in P.15.b. and c.
- (8) General. Three platoons are being specially trained in the rapid construction of Strong posts. These troops will be sent forward immediately in rear of the last assaulting waves and will dig in on the forward crest of the ridge to the West of VAIRE and HAMEL WOODS at approximately 400 yards in rear of the BLUE LINE and spread at equal intervals along the whole front. With each of these platoons there will be two Vickers Guns and an Engineer Officer.
 When the 14th Battalion subsequently moves up they will dig a Support Line on the general line indicated by the establishment of these three platoons.
- (9) Prisoners. 20 Military Police will be required to report at Forward Brigade Headquarters at 10.p.m. on "Y"/"Z" night for the purpose of collecting and evacuating prisoners captured.
- (10) 4th M.G. Company. Three guns will report to and go over with each of the 13th and 15th Battalions.
 Two guns will be attached to and will go over with each of the special platoons mentioned in para. 8 above.
 Four guns will remain in Reserve in the vicinity of Brigade Headquarters.
- (11) 4th T.M. Battery. Two Trench Mortars will be attached to and go over with each of the 13th and 15th Battalions. The balance will remain in Reserve.
- (12) Medical arrangements. Early information is requested concerning medical arrangements. As the carry will be very long bearer assistance will be required forward of the jumping off position.

Lieut-Colonel.
 Comdg. 4th Aust. Inf. Brigade.

Appendix 6423rd BattaliondirectionGeneral ideaMovement of Coys. during
attack.

After forming up on J. O. T.
D Company on the right at zero
hour will advance from J. O. T.
in 2 waves at 20 yards distance,
and attack Enemy trench running
from P. 25. B. H. O. to P. 26. A. O. 5.
Establishing a Block in trench at
P. 25. B. H. O.

B Company Centre, will move
from J. O. T. at zero hour in
2 waves, attacking & making
good Enemy trench from P. 26. A. O. 5
to P. 26. A. O. 8 and will then pivot
on the Right flank and swing
forward, establishing a line of
Outposts from P. 26. A. O. 5. to
P. 26. B. O. 7.

A Company Left flank will form
up on J. O. T. immediately in
rear of Right Company if

2

21st Battalion, and at zero hour will move forward in line of sections in file at 50 yards intervals, and act with left flank of 'B' Company at P. 26. A. 6.8 and right flank of 21st Battalion, continuing the advance 'A' Company will swing half-right conforming to the movements of 'B' Company and 21st Battalion, and establish a line of outposts at P. 26. B. 0.7 to P. 20. d. 7. 0.

How many Posts.

'C' Company. One Platoon will move forward to close support on consolidation and occupy trench running from P. 26. A. 0.5 to P. 26. A. 6.9.

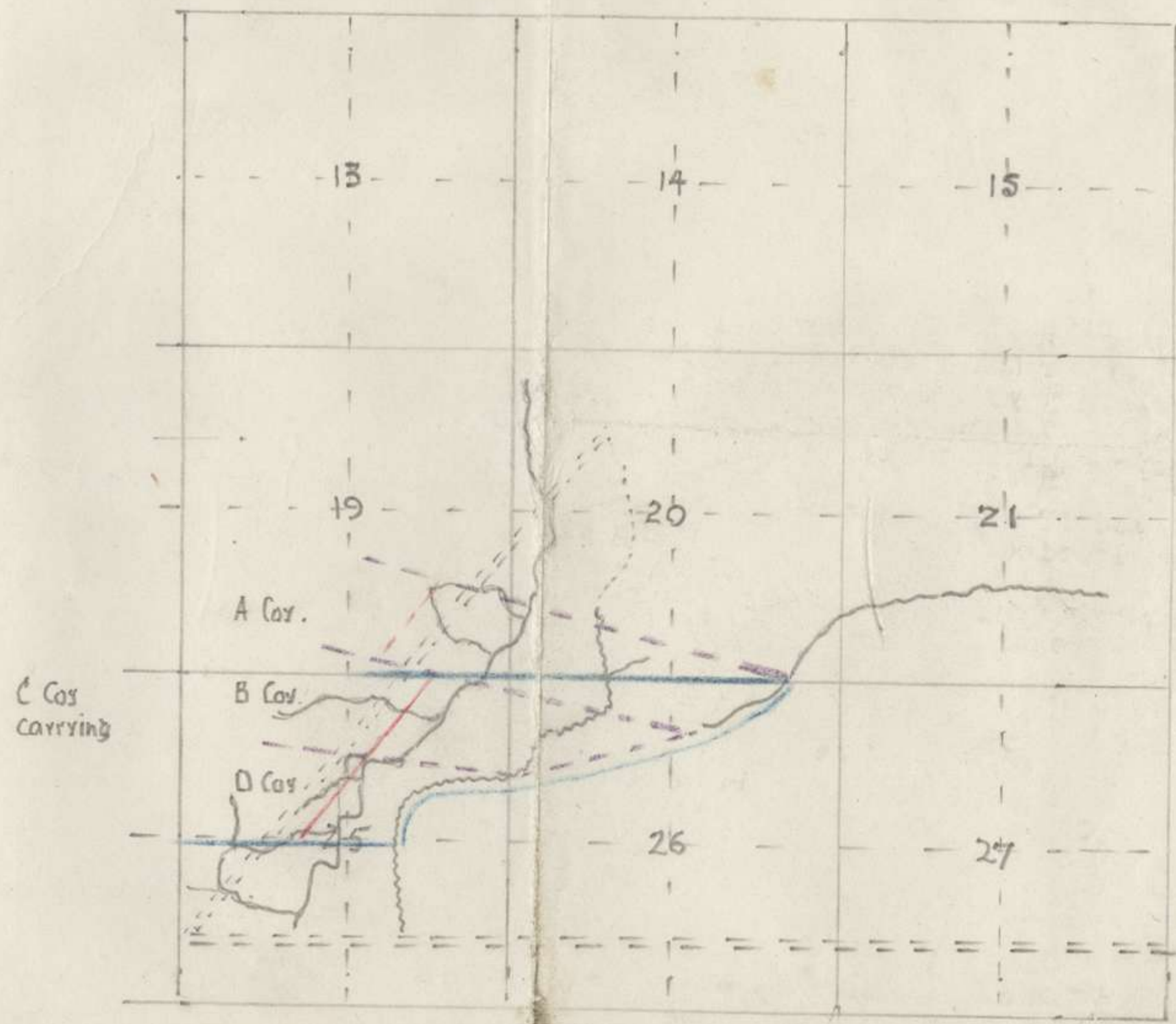
3 Platoons will be detailed to act as carrying parties - one to each Company - moving in single file in rear of each Company. On completion of consolidation they will remain their Companies in trenches running from P. 26. A. 0.5 to P. 26. A. 6.8.

Appendix 643

Liaison. One Officer and six (6) Scouts will maintain communication with left flank of A. Coy. and right flank of 21st Battalion

W. H. Jones
Major
Commanding 21st Bn

28th June 1918.



I.O.T. shown in red
 Coy boundaries brown
 Final objectives blue

Formations —
 B & D. will be formed up in 2 waves at a distance of vds. frontage of each Coy. approx 300'.
 "A" Coy will be in line of sections in single file at 20' interval. formed up in rear of right Coy of 21st Bn.

Amendix 64
 189

S E C R E T.

No. G. 5/612

Headquarters,
4th AUSTRALIAN DIVISION.
28th June, 1918.

C.R.A.
4th Aust. M.G. Bn.
6th Aust. Inf. Bde.
11th " " "
4th " " "

6th
AUSTRALIAN
INFANTRY BRIGADE.
No. 2794
Date 9A. 29/6/18

Herewith Map showing proposed Artillery Start Line.

Please acknowledge receipt.

Notes

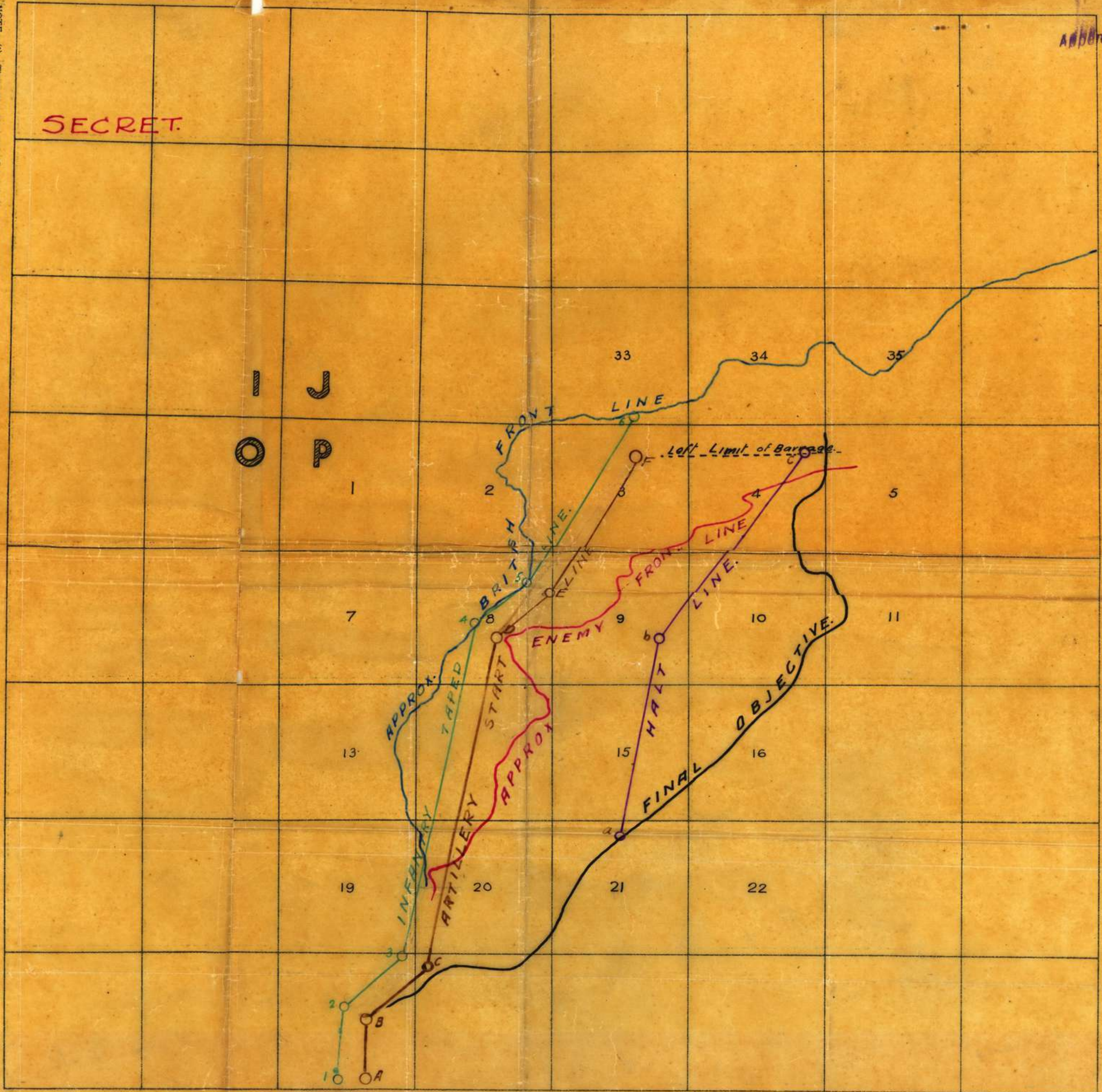
W. Gray

Lieut-Colonel,
G.S., 4th AUSTRALIAN DIVISION.

Appendix

64

Identification Trace for use with Artillery Maps.



SECRET.

NOTE:—(1). These traces are intended to facilitate the communication of information as to the position of targets, which have been located on a squared map.
 (2). The squares on this trace are 500 yards in length on the 1/10,000 scale, 1,000 yards in length on the 1/20,000 scale, and 2,000 yards in length on the 1/40,000 scale.
 (3). The squares on the trace are fitted to the squares of the map showing the targets, which are then drawn on the trace. Sufficient letters and numbers must also be added to enable the recipient to place the trace in the correct position on his own map. A little detail may also be traced, but this is not essential. The name and scale of the map to which the trace refers must be always given. The trace can be used for the 1/10,000, 1/20,000, or 1/40,000 scale.

G.S.G.S. 3023.

Tracing taken from Sheet 62° NE & SE
 of the 1:20,000 map of FRANCE

Signature
 Date

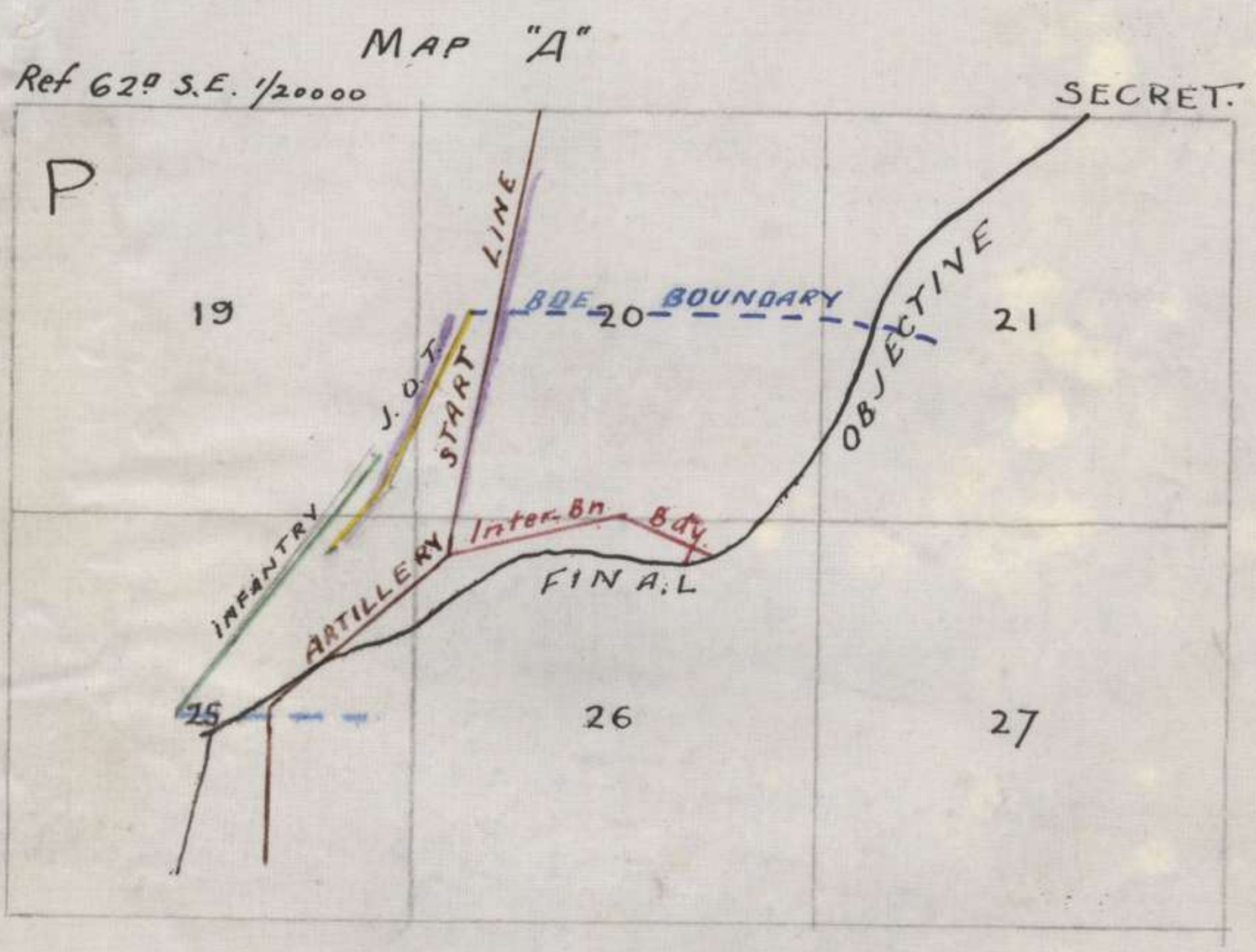
Batt 6th Bde

I am sending
the Batt I.D. along to see
you re the position of my
Reserve Coy. With the ~~al~~
alteral objective my centre
Company will occupy the
Brosch front line and not a line
of posts out in front. I was
going to leave them in the old
front line where they are in a
central position for supporting
any of the 3 Co's in the line

W H Sakerman
Coy

Appendix 64.

GOC



Appendix 64

S E C R E T.

Copy No. 3FOURTH AUSTRALIAN DIVISIONAL ORDER NO. 128.Headquarters,
29th June, 1918.

Ref. attached Map "A".

1. INTENTION.

An attack will be delivered on the left of the 2nd Aust. Divisional front and on the 4th Aust. Divisional front, on a date and hour which will be notified later, with a view to the capture of the Spur running from the main VILLERS BRETONNEUX Plateau at P. 25. Central, about 1,000 yards East of VAIRE and HAMEL Woods, East of HAMEL to the present front line at the S.E. end of BOUZENCOURT.

On the Right and Centre of this advance the objective includes no defined system of trenches; on the left, from East of HAMEL Village (inclusive), it is defined by an old British trench system at present used by the enemy.

2. ADDITIONAL TROOPS.

In addition to present resources the following troops have been placed at the disposal of the Divisional Commander for the operation :-

Artillery

- 47th Divisional Artillery.
4th R.H.A. Brigade.
17th Divisional Artillery.
5th Aust. Div. Artillery.
3 Brigades F.A. to be detailed by
2nd Aust. Division.

Infantry

- 11th Aust. Infantry Bde.
6th Aust. Infantry Bde. (less 2 Bns.)
4 Companies United States Infantry.

Machine Guns

- 1 Coy. 2nd Aust. M.G. Bn. to co-operate
with 6th Aust. Inf. Bde.
1 Coy. 3rd Aust. M.G. Bn. to co-operate
with 11th Aust. Inf. Bde.
1 Coy. (less 1 Section) 5th Aust. M.G. Bn.
for barrage fire from Northern flank.

Tanks

- A total of 4½ Coys. (54 tanks) of
5th Tank Brigade.

Engineers

- No. 1 Special Coy. R.E. for smoke screen-
ing.

3. INFANTRY DISTRIBUTION.

The attack will be delivered by the following formations :-

6th Aust. Inf. Bde., (less two Battalions).
4th Aust. Inf. Bde., (plus 2 Coys. United States Infantry)
11th Aust. Inf. Bde., (plus 2 Coys. United States Infantry)

in that order from right to left, under the orders of the G.O.C., 4th Aust. Division. The Companies United States Infantry, allotted

64

to the 4th and 11th Aust. Infantry Brigades will be used in the attack at the discretion of Brigade Commanders.

Limits of Brigade Areas and Objectives will be as shown on Map "A".

4. PRINCIPLE OF CO-OPERATION BETWEEN ARTILLERY, INFANTRY & TANKS.

The advance will be carried out under a barrage and will be supported by Tank formations, who will advance as close to the barrage as possible. If serious opposition is encountered after the passage of the artillery barrage the Infantry will lie down while the Tanks clear the way. The main principle to be followed in the employment of Tanks is to minimise Infantry casualties during the advance.

5. INFANTRY ATTACK FORMATIONS.

The attack will be carried out in three waves. Special battalions, moving in two waves and supported by tanks detailed for the purpose, will be detailed for the capture and neutralization of the HAMEL and VAIRE Woods locality, and the village of HAMEL. A special Unit, supported by tanks, will also be detailed to the capture and neutralization of the PEAR-SHAPED TRENCH locality.

The troops allotted for the capture of the final objective, (Blue Line) will move in two waves, level with those allotted for VAIRE Wood and HAMEL Village, and supported by special Tank formations allotted to Units, round the flanks of such Main Centres of Resistance on to the Blue Line.

The object will be to establish the troops on the final objective as rapidly as possible, closing gaps by joining up flanking units beyond the Main Centres of Resistance, leaving the latter to be dealt with by the special battalions and tanks allotted for the purpose.

The 3rd wave will consist of Brigade Reserves and will provide the necessary carriers. This wave will be disposed and will move at the discretion of Brigade Commanders.

6. FLANK LIAISON.

Infantry Brigade Commanders will make mutual arrangements for keeping touch between Infantry Brigades during the advance. Special Units will be detailed for this purpose and will be instructed to overlap the corresponding units of neighbouring Brigades throughout.

7. DIRECTION.

Parties, each with two Officers, will be detailed on the flanks of Infantry Brigades for the sole purpose of keeping direction by Compass Bearing.

8. ARTILLERY.

(a) The Artillery will put down normal harassing fire, (in accordance with the programme lately instituted,) with the exception of gas, from Zero minus 8 minutes to Zero, to drown the noise of approaching tanks, who will leave their forming up line not less than 8 minutes before Zero. The Tank Commander will make arrangements to ensure as accurately as possible synchronization of arrival at the Infantry Taped line.

/(b)...

- 3 -

(b) The actual barrage will drop at Zero on the "Start Line" shown on the attached map, and after remaining thereon for four minutes will advance by lifts of 100 yards at intervals of three minutes, as shown on the barrage map, (to be issued later,) to the "HALT LINE" where there will be a pause of 10 minutes. After the pause the barrage will lift 100 yards at intervals of 4 minutes up to 400 yards beyond the Blue line.

(c) On arrival at the "HALT LINE" a thick smoke screen will be built up to indicate the beginning of the 10 minutes halt. Eight minutes afterwards a thick smoke screen will again be built up to indicate that the advance is about to be resumed.

(d) After passing the Blue line the barrage will advance at a rate of 100 yards in four minutes, to a line 400 yards beyond, where it will continue as a standing barrage to cover consolidation, for a period to be notified later.

(e) From Zero hour on, a special programme of intense Counter-Battery action will be carried out.

9. TANK CO-OPERATION.

(a) Tanks will be divided into Main Body Tanks and Reserve Tanks.

(b) Main Body Tanks are further sub-divided into those detailed, in conjunction with Special Infantry Units, for the reduction of Centres of Resistance, and those detailed to cover the Infantry advance to the Blue Line.

In all cases Main Body Tanks will be detailed, in groups of one or more sections, for the support of definite Infantry formations or Units detailed for definite objectives.

The attached diagram "A" shows the allotment of tanks to Infantry units and objectives.

Arrangements must be made for the Commanders of Infantry units to discuss with the Commanders of Tank Units allotted for their support definite arrangements for mutual co-operation.

The total number of Main Body Tanks will be 42, allotted as follows:

Right Brigade Sector	-	2 Sections	{ 6 Tanks }.
Centre " "	-	5 " "	{ 15 " " }
Left " "	-	5 " "	{ 15 " " }
Liaison between Centre and Left Bde. Sectors	-	2 " "	{ 6 " " }.

(c) There will be six Reserve Tanks in each of the Centre and Left Brigade Sectors. The main principles of their employment will be to hold them in hand to resist counter-attack, in co-operation with Infantry Reserves, or to use them for the reduction of points or localities which have successfully resisted the Main Advance.

(d) The Tank Corps is also arranging for the carriage of a certain amount of supplies, ammunition and engineer material on Tanks taking part in the attack, and is also providing four carrier tanks, (each capable of carrying five tons,) extra to the fighting tanks.

P.T.O.

10. DUMPS.

Brigade Commanders and Machine Gun Battalion Commander will submit without delay lists of Ammunition, Engineer material, etc., which they require dumped and notify the localities selected for the dumps. The work of dumping the stores will then be carried out by the troops in the line.

Every care will be taken to conceal dumps from aerial observation and to prevent preparations from being given away by abnormal movement by day or noise by night.

11. MACHINE GUNS.

(a) A Machine Gun Company will be detailed for the support of each attacking Infantry Brigade and will be used, at the discretion of the Infantry Brigade Commander, for the support of the Infantry during the advance and for the consolidation of the captured ground.

A proportion of Machine Guns is to be allotted, by Brigades, as portions of the garrisons of strong points to be established along the new Support System.

(b) The Divisional Machine Gun Battalion Commander will arrange to supplement the Artillery Barrage, to the fullest extent possible, with the remainder of the Machine Gun Coys. at his disposal. This will include fire from the M.G.'s. at present disposed for the defence of the forward zone. Any movement of M.G.'s for this purpose must not be of such a nature as to prevent their use for the defence of the present defensive organization.

(c) One Company (less one Section) 5th Aust. M.G. Battalion is available to assist in covering the advance and consolidation of the left attacking Brigade. Details will be arranged direct by the C.O., Machine Gun Battalion.

12. FIELD ENGINEERS.

A Field Coy. will be allotted to each Brigade taking part in the attack. These will be employed in conjunction with Special Infantry Units, for the establishment of a system of strong posts in rear of the final objective along the line of the eventual Support System.

13. PLANS OF ATTACK.

Brigade Commanders will submit detailed plans as soon as possible. The following points will be specially dealt with in the consideration of plans.

(a) Details of co-operation between Tanks and Infantry.

(b) Locations of H.Q. of Battalions during and after the operation.

(c) Signals Communication during and after the operation.

(d) Arrangements for the construction of S.P.'s. along the eventual Support System, and for the selection of the localities in which they should be constructed from maps and by reconnaissance from our present Forward Zone.

Appendix 64

- 5 -

14. INSTRUCTIONS.

Further instructions will be issued in detail as required.

15. Acknowledge.

*Notes**D. Savaruk*Lieut-Colonel,
G.S., 4th AUSTRALIAN DIVISION.Issued at 9 pmDistribution:

Copy No. 1	- x	4th Aust. Div. Artillery.
2	- x	4th Aust. Inf. Bde.
3	- x	6th Aust. Inf. Bde.
4	- x	11th Aust. Inf. Bde.
5	-	12th Aust. Inf. Bde.
6	-	13th Aust. Inf. Bde.
7	- x	4th Aust. M.G. Bn.
8	-	'A.Q'.
9	-	C.R.E.
10	- x	A.D.M.S.
11	-	4th Aust. Div. Signal Coy.
12	-	A.P.M.
13-15	- x	AUST. Corps.
16	- x	2nd Aust. Division.
17	-	3rd Aust. Division.
18	- x	5th Aust. Division.
19	- x	3rd Squadron A.F.C.
20	- x	5th Tank Brigade.
21	- x	8th Tank Battalion.
22	-	L.H. Detachment.
23	-	Cyclist Detachment.

x = 1 copy of Map and 1 copy of Diagram.

R.S.B.C.

- XMAS GIFT.

R. 54 J.Wills, 319 Flinders Street, Melbourne.

H.138 G.Woods, Caulfield.

3. S.138 C.H.Johnson, York Street, Caulfield.

4. M.190 Mrs. A.Bryant, High Street, Mt. Waverley.

H.123 Mr. A.Blair, C/- Danks', City.

Q.113 Mrs. Bowen, 12 King Street, Elsternwick.

J. Dickson
G. L. Evans
J. O. Allan
H. Hughes
H. Keage
Ramsay
H. Gordon

SECRET

06


4TH AUST DIV^N

DIAGRAM "A"

ISSUED WITH DIVISIONAL ORDER N^o128.

FINAL OBJECTIVE

LEGEND

 EXPECTED MAIN CENTRES OF RESISTANCE

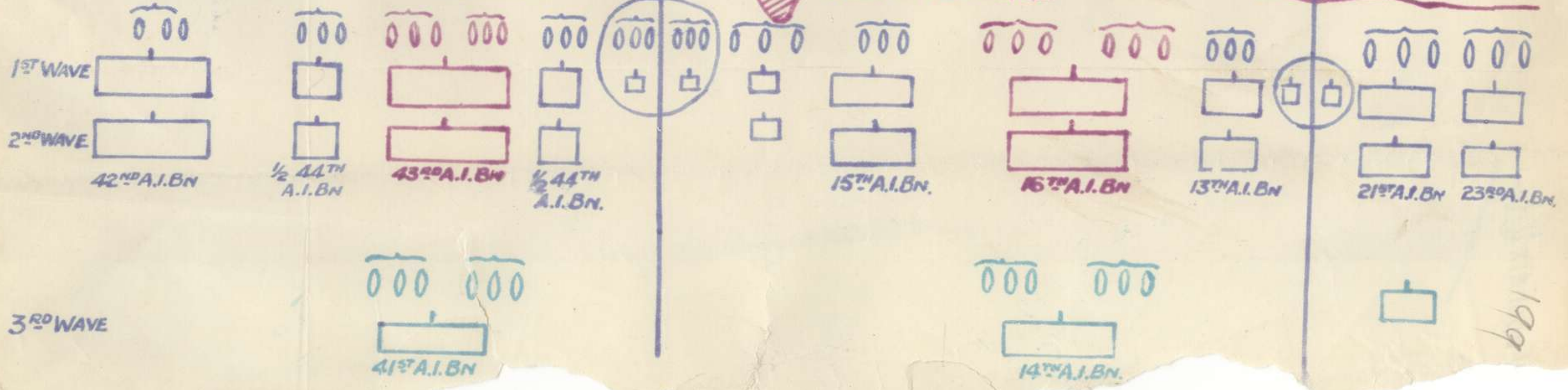
 OR  SINGLE TANKS

RED - TROOPS & TANKS DETAILED FOR REDUCTION OF MAIN CENTRES OF RESISTANCE.

BLUE. TROOPS DETAILED FOR CAPTURE OF FINAL OBJECTIVE

GREEN. RESERVES.

IN BLUE CIRCLE. LIASSION UNITS MOVING UP TO BLUE LINE.



bb1

Appendix 64

"A" Form.
MESSAGES AND SIGNALS.

Army Form C. 2121.
(In pads of 100.)

No. of Message.....

Prefix.....	Code.....	m	Words.	Charge.	This message is on a/c of:	Recd. at.....	m.
Office of Origin and Service Instructions.				Sent		Service.	Date.....
				At.....		From.....	
				To.....		By.....	
				By.....	(Signature of "Franking Officer.")		

TO { G. O. C.
6th Aust Div Base

Sender's Number. * X. 123. Day of Month. 29. In reply to Number. —. A A A

map location of 5th Aust Div
H.Q. O 28 b. 48. 20.

5:35 AM
Suggested for further H.Q. =
A H

From Candy 2nd Aust Bn. Local.

The above may be forwarded as now corrected. (Z)
Censor. Signature of Addressor or person authorised to telegraph in his name.

* This line should be erased if not required.
(3796.) Wt. W 492/M1647. 6"0,000 Pads. 5/17. H.W. & V., Ld. (E. 1187.)

ONI
AUSTRALIAN
2805
6/29/18

Appendix 64

SECRET.

201

No.G.((5/613/1

Headquarters,
4th AUSTRALIAN DIVISION.
29th June, 1918.

- G.R.A.
- G.O.C., 4th Aust. Inf. Bde.
- G.O.C., 6th " " "
- G.O.C., 11th " " "
- G.O., 4th Aust. M.G. Bn.

1. A conference to consider certain projected operations will be held at Corps Headquarters, BERTANGLES at 2.30 p.m. on Sunday June 30th.

2. The following will attend :-

- G.O.C., 4th AUSTRALIAN DIVISION.
- G.S.O.1, " " "
- C.R.A. " " "
- A.A. & Q.M.G. " "
- G.O.C., 4th AUST. INF. BDE.
- G.O.C., 6th " " "
- G.O.C., 11th " " "
- G.O., 4th Aust. M.G. Bn.

3. Brigade Commanders will be prepared, with drafts of their orders, maps and diagrams to explain their proposed plans and dispositions to the Conference.

4. Car will call for G.O., M.G. Bn. at 1.15 p.m. and G.O.C., 4th Aust. Inf. Bde. at 1.30 p.m.. 2nd Aust. Division will provide car for G.O.C., 6th Aust. Inf. Bde.

Wrote of 29/18

Lyons Capt
Lieut-Colonel,
G.S., 4th AUSTRALIAN DIVISION.

- Copies to G.O.C.
- " G.S.O.1.
- " A.A. & Q.M.G.

This has not apparently gone to our Bde but presume they will know re car

yes

*201
29/18*

SECRET.

Fourth Australian Infantry Brigade.
HEADQUARTERS.
29th June, 1918.

H Q. 6th Aust. Inf. Bde

Herewith Copy No. ⁴.....of Secret letter to 4th
Australian Division, dated 28th June, 1918.

please acknowledge by wire.

H. Thomson

Captain.
Staff-Captain.
4th Aust. Inf. Brigade.



7005

Appendix

64

Ref. Map 62^D 6th FIELD CO AUSTRALIAN ENGINEERS
 Works Report for 24 hours ending O.A.M. 1/7/18

95

Location	Work	Person in Charge	No. of men employed		Particulars	Remarks
			Eng.	Inf.		
N.27.c.2.2.	R.A.P. Deep Dug Out.	Lt. HILL.	4 2 N.CO'S	12 (M)	Face 7'x3' driven 3'	Reference N26.d.9.2. as handed over is incorrect.
N.23.d.8.2.	Nº2 Sig Test Dug Out	"	4 2 N.CO'S	12	Face 7'x5' driven 3'6" (2 Shifts of 2 Sprs & 6 Inf.)	
N.20.c.80.	Making B.W. Concertinas	Lt. GILLESPIE	4	40.	126 B.W. Concertinas made.	
O.25.d.3.7.	Forest Patrol.	"	5	20	-	
BLANGY TRONVILLE.	Repairing Pump.	"	2	-	Two pumps repaired.	
N.14.d.0.3.	Bridge Emergency Track.	Lt DAVIES.	3	10	10 yds. Formation Complete - Timber cut for 15 yds Corduroy.	
N.14.c.1.0.	" " "	"	2	11	15 yds. Formation Complete. - 70% Guard railing around Swamp Complete.	
N.13.d.7.2	" " "	"	1	13.	60 yds. Light Formation and drain complete.	
N.13.c.7.2	" " "	"	3	10	190' 3"x2" Hand rail on Bridge complete. - 12 yds Corduroy Complete.	
N.13.d.8.2.	Boring for Guard Rail on Track.	"	1	-	4 Holes complete through 12" concrete wall.	
O.36.a.6.4.	Deep Dug Out. (M.G.)	Lt CARLETON.	4	-	Building platform with trap-door and Gas-proofing same. Salvaging timber for bunking - Completing Nº2 Stairway (5 steps) Nº1 Stairway (6 steps) Cleaning out Dug Out.	2 Shifts. of 2 Sprs.
O.14.c.65.97.	" " " (Artillery)	"	2	8	Nº1 Entrance: - Face 5'6"x3'6" driven 3' and 2 sets.	2 Shifts of 4 Gunners, 1 Spr
O.9.c.10.25.	" " " "	"	4	16	" 2 " " " 3' " 4 "	2 Shifts. of 2 Sprs & 8 Gunners
O.15.b.8.8.	" " " "	"	2	6	Face 9'x7' driven. 2' and 1 Temporary Set.	1 Shift
O.27.a.70.75.	" " " "	"	2	5	Face 7'x7' driven 4' (Extension of existing D.O.) 3 bunks erected.	1 Shift of 4 hours.
O.16.b.5.92.	Erection of Shelters	"	4	-	N.CO'S Supervising.	
O.34.b.5.3.	Deep Dug Out (M.G.)	Lt. SEXTON.	5	7	Face 9'x7' driven 15' and 2 sets erected. Spoil removed to stump.	
N.19.b.50.95.	Training Ground for Bde Nucleus B2	Capt FENTRELL	4	12	40' Brushwood revetment completed. 120.c.ft earth removed from trench. 3 G.S. Wagon loads of round timber assorted sizes cut.	

Appendix

J. David
 for O.C. 6th FIELD COMPANY ENGINEERS A.I.F.

6th FIELD CO
 AUSTRALIAN ENGINEERS
 No. 6168
 Date 1.7.18
 203

Ref. Map. 62^D

6TH. FIELD CO AUSTRALIAN ENGINEERS.

Works Report for 24 hours ending 3/10 A.M. 2/7/18

Location	Work	Person in charge	No. of men employed		Particulars	Remarks
			Eng	Inf.		
N. 27. C. 2. 2.	R.A.P. Deep Dug Out	L. HILL.	2	12 (AMC)	Face 7'x3' driven 6'6" and 2 sets placed. (No. 2 Entrance)	2.6hr shift. of 15pr-6. AMK 1.4hr shift.
N. 23. d. 8. 2.	No. 2 Sig Test Dug Out	"	4	12	Face 7'x3' driven 5'	
N. 29. a. 65. 50	Bunking.	"	3	-	4 Bunks completed and 4 frames.	
	Miscellaneous.	"	2	-	Making Truck for R.A.P. D.O.	
		"	4	-	NCO's Supervising Works	
N 20. c. 8. 0.	Making B.W. Concertinas	L. GILLESPIE	1	28	76. Concertinas made.	
O. 25. d. 3. 7.	Forest Patrol	"	5	20		
N. 13. c. 7. 2.	Bridge Emergency Track.	L. DAVIES.	2	6	6yds. Corduroy complete.	
N. 13. d. 7. 2	" " "	"	1	8	50yds. Light formation complete.	
N. 14. c. 1. 0.	" " "	"	1	3.	Guard Rail around Swamp ⁵⁰ complete.	
N. 13. d. 8. 2.	" " "	"	1	-	Boring for Guard Railing - 4 holes complete.	
N. 14. d. 0. 3	" " "	"	2	8	Splitting timber and laying corduroy track. 10% complete.	
N. 22. b. 1. 0.	D/Out Shelters	"	3	12	2. Cubicles 50% complete in D/Out drive.	
N. 16. d. 5. 8.	Timber cutting for mill	"	2	10.	10. 10' lengths cut and delivered at 3 rd Pioneer's Workshop	
O. 27. a. 70. 75.	Deep Dug Out (Artillery)	L. CARLETON.	2	15 (Art)	Face 7'x7' driven 4' and 2 sets.	Eng 2. Shifts Art 3 "
O. 14. c. 65. 97	" " "	"	2	8	No. 1 Entrance. Face. 5'6"x3'6" driven 4' and 5 sets.	2.6hr. Shifts of 15pr & 6. Art.
	" " "	"	4	2	" 2 " " " 2' x 2 "	
O. 9. c. 10. 25	" " "	"	2	6	No. 1 Face. 5'6"x3'6" driven 3' and 2 sets.	2. Shifts of 25pr & 6. Art.
	" " "	"	2	6	" 2 " " " 3' x 2 "	
O. 15. b. 8. 8.	" " "	"	2	2	No. 1. Face. 5'6"x3'6" driven 1'6"	2. Shifts of 25pr & 7. Art.
	" " "	"	2	12	" 2 " 5'6"x3'6" " 2'6" and 1. Set.	
O. 36. a. 6. 4.	" " (M.G)	"	4		Erected and wired. 6 bunks - Wired. 5 additional bunks with single wire. Completed Gas cover and platform to shaft (No. 7.)	
		"	2		Surveying	
		"	4		NCO's Supervising.	
O. 34. b. 5. 3.	Deep Dug Out (M.G)	L. SEXTON.	4	8	Face 9'x7' driven 2' and timbered.	Large foil of shell from roof
N. 19. b. 50. 95.	Training Ground for Nucleus B 2	Capt FEWELL	4	6.	Two. 40' Frames for bayonet dummies erected. 40' of Trench revetted with breastwork on one side only. 10. Limber loads of earth carted to fill in against breastwork.	

6th
 AUSTRALIAN
 INFANTRY BRIGADE.
 No. _____
 Date: _____

L. Hill
 for. O.C. 6TH FIELD COMPANY ENGINEERS A.I.F.

Appendix

64-204

Ref. Map:- 62D

8TH. FIELD CO AUSTRALIAN ENGINEERS.

Works Report for 24 hours ending 6 A.M. 3/7/18.

96

Location	Works	Person i/c work	No. of men employed		Particulars	Remarks.
			Eng	Inf.		
N23. d. 8. 2.	No. 2. Dig Test Dug Out	Lt. Hill L.	2	12	Cleaned up 2 Faces and chamber. - Put in 3 sets with lagging. - 7'x5' Face driven 1'	2 Shifts. 1 Spr. 6. Inf.
N. 27. c. 2. 2.	R.A.P. Dug. Out.	"	4	24 (AMC)	Face 7'x3'3" driven 8'	2 Shifts. 1 Spr. 1. AMC. per face.
N 29 a. 65. 30.	M.G. D.O. N° 64.	"	2	-	4 Bunks wired. - Framework for 4 bunks erected.	
O. 30. b. 47. to P. 19. d. 9. 5	Carrying Wiring stores.	"	2	87.	Two trips - 122 Concertinas, & 400 medium pickets carried. - Camouflaging dumps	
O. 30. b. 47. to P. 25 a. 9. 3	"	"	2	100.	One trip - 100 Concertinas carried.	
P. 25. b. 8. 1. to P. 20 a. 1. 0	J.O.T. Reconnaissance	"	2	-	Reconnoitring site for Left B ^d J.O.T.	
O. 24. c. 6. 8.	Reconnaissance.	"	2	-	looking over R.A.P. Dug Out preparatory to acting as guides.	
N. 20. c. 8. 0.	Making B.W. Concertinas	Lt GILLESPIE	1	30	57 Concertinas made.	
N. 13. d. 7. 0.	Bayonet course & miniature range	"	3	20	Bayonet course completed. Frame for targets completed. Miniature range completed.	
O. 25 d. 3. 7	Forest Patrol	"	5	20		
O. 27. a. 70. 75.	Extension of mined Artillery Dugout.	Lt CARLETON	2	15	Excavation 5' & 2 sets on 7'x7' face.	
O. 36 a. 6. 4.	Mined M.G. Dugout	"	4		18 steps fixed. Lagging (about 40 sq. ft.) to stairway. 2 gas curtains. wired 1 bunk. Cover over No 1 shaft 100% complete. Salvaging timber.	
O. 14. a. 7. 7.	Mined Arty. D.O.	"	1	4	No 1 excavation. 2'x2 sets. No 2 excavation. 2'x3 sets.	
O. 9. c. 10. 25.	Mined Arty. D.O.	"	1	8	No 1 " 2'x2 " No 2 " 2'x2 "	
O. 15. b. 8. 8.	Mined Arty. D.O.	"	1	6	No 1 excavated 50 cub. ft earth. Preparing new face for stairway. No 2 " Lagging + cleaning + 6" of excavation on 7'x3'6" face.	
O. 20. c. 75. 85.	Bunking in existing Mined Artillery. D.O.	"	1	-	Erected 15 bunk frames. 10 bunks 100% wired. 5 bunks 50% wired.	
N. 24. b. 20. 60.	Bunking in existing Mined Arty. D.O.	"	1	5	Excavating 1' at end of chamber for 1 extra set, on 7'x9'3" face.	
			1	2	Framework for 4 bunks. Cleaning floor & removing 3 old bunks.	
			4		Supervision	
O. 34. b. 5. 3.	M.G. Deep dugout	Lt SEXTON	5	7	Drove 4' on face of 9'6" x 7'0"	
N. 13. c. 7. 2.	Bridge Emergency Track.	Lt DAVIES.	2	8	10 yds. Corduroy complete.	
N. 14 d. 0. 3	"	"	2	16.	50. yds. Light Formation complete.	
N. 16 d. 5. 3.	Cutting Timber	"	6	-	7. 11' lengths of 1" dia timber delivered to mill.	
N. 22. b. 1. 0.	Dugout Shelters.	"	4	10	3. Cubicles. 50% complete.	

No. of 6hr shifts or			
Eng	Arty.	Eng	Arty.
2	3	1	5
2		2	
1	1	1	4
1 3/4	1 3/4	1	3
2/3	2/3	1	6
1		1	
1	1	1	5
1	1	1	2

8th
AUSTRALIA
INFANTRY BRIGADE.

No. 8/7/18
Date

for Lt. Davies
8TH FIELD COMPANY ENGINEERS A.I.F.

Appendix

67
205

Ref. Map - 620.

6th FIELD CO AUSTRALIAN ENGINEERS

Works Report for 24 hours ending 0 A.M. 4-7-1918

90

Location	Work	Person in Charge	No. of men employed		Particulars	Remarks
			Eng.	Arty.		
O. 27. a. 70. 75.	Extension of existing MINED Arty. D.O.	LT. CARLETON	2	10	Excavation 4' x 2 sets on 7' x 7' face. Emptying Sandbags at night.	2 shifts of 1 Spr + 5 Arty. per shift.
O. 20. c. 75. 85.	Bunking Arty. D.O.	"	1	2	Wiring 5 bunks 50%. Erecting frame for 7 bunks.	
N. 24. b. 70. 95.	Bunking Arty. H.Q. D.O.	"	1	2	Frame work for 6 bunks. 7 bunks wired. Excavation for 1 additional set, 1' on 7' x 9' face.	1 shift.
O. 36. a. 6. 4.	Mined M.G. D.O.	"	4	-	Erected heavy cover over shaft in cottage. Fixed 2 gas curtains. Staying cellar roof in cottage. Building & fixing ladder. Covering 6 bunks with one layer of wire netting.	
			2	-	Supervision.	
N. 23. d. 8. 2.	Nº 2 Sig. Test box	LT HILL	3	-	Stepping entrance 50% completed. 6 sills put in at bottom of incline to carry steps - 2 sets fitted in chamber.	
O. 24. c. 1. 2. (Approx)	R.A.P. deep dugout.	"	9	16	Drove 4' on face 9' x 7'. Lagged roof.	4 shifts 2 sprs + 4 inf.
P. 19. d. & P. 20. c.	Laying out J.O.T. and guide tapes	"	4	-	Layed out J.O.T. 550 yds length + 4 guiding tapes totalling 850 yds - Total tape 1400 yds.	
P. 19. c. & P. 19. d.	Carrying stores	"	4	50	Carrying 11 load duckboards and placing across front line for bridges. Guiding carrying party with pickets to Rt Bn Dump at P. 25. b. 0. 4. approx.	
3rd Pioneer Sawmill:	Cutting timber for sawmill.	LT. DAVIES	6	-		
N. 22. b. 1. 2.	Dug out shelters.	"	4	-	Completed.	

Lt. Davies Lewis
 6th Field Coy A.E.

Appendix 617
 6th AUSTRALIAN INFANTRY ENGINEERS
 No. 10159
 Date 4/7/18

206

Ref. Map - 62D.

6th FIELD CO AUSTRALIAN ENGINEERS

Works Report for 24 hours ending 6 A.M. 5-7-1918.

66

Location	Work	Person in Charge	No. of men employed		Particulars	Remarks
			Eng.	Inf.		
O. 27. a. 70. 75.	Extension to mined Arty. D.O. 26th Bty.	LT CARLETON	20	16	7' x 7' face excavated 4' + 2 sets + lagging.	2 shifts of 1 spr + 8 int. per shift.
N. 24. b. 70. 95	Bunking Arty. HQ 7th. A.F. A.D.D.O.	"	1	5	7' 6" x 9' face excavated for one extra set. 116". 5 bunks erected + wired.	1 shift.
O. 20. c. 75. 85.	Bunking Mined Arty. DO 29th Bty.	"	1	2	Wired 7 bunks + built 2 tables.	
N. 23. d. 8. 2.	No 2 Sig. Test Box.	LT HILL	2		Completed steps on entrance - Lagged bottom of stairway.	
O. 24. c. 1. 2.	R.A.P. deep dugout	"	10	16	4' excavation on face 9' x 7'.	4 shifts. 2 sprs + 4 int. per shift.
P. 25. b. 70. 8. to 8. 25. b. 8. 4.	C.T.	LT ELSUM.	5	100	280 yds. dug. Average depth 3.3". Average width 2'.	
Captured Area.	Reconnaissance	LT SEXTON	7	10 ft.	Reconnoitred captured area in regard to its state of defence.	
P. 25. b. 7. 8. to New front line	Widening C.T.	"	12		230 yds. widened to 18" to 2' at bottom; + 3' to 3' 6" deep.	
P. 20. c. 9. 3. to P. 21. a. 20. + P. 26. a. 6. 8. to P. 26. a. 4. 7.	Location of new front line posts.	"	3			
N. 16. c. 4. 2.	Mill timber	LT DAVIES	11		6-13' logs cut + delivered to 3rd Pioneer Mill.	
O. 24. d. 3. 5. and P. 19. c. 5. 5.	Bridging Trenches.	LT GILLESPIE	4		Two artillery bridges placed across trenches.	



E.H. Davies
6TH FIELD COMPANY ENGINEERS A.I.F.

Appendix 6H
201

Ref. Map -

6th FIELD CO AUSTRALIAN ENGINEERS

Works Report for 24 hours ending 0 A.M. 6.7.18--

30

Location	Work	Person % Work	No. of men employed		Particulars	Remarks
			Eng.	Inf.		
O. 27. a. 70. 75.	Extension of Mined ARTILLERY Dig Out	Lt CARLETON.	2	10	Lagging and cleaning out after breaking faces through. Fixing spreaders and building framework of 2 bunks.	
N. 24. b. 70. 95.	Bunking 7th AFA. Bde HQ Dig Out.	"	1	6	Framework built for 9 bunks - 3 bunks wired. Excavation for 1. additional set. 16'	1 Spr & 4 Inf. on excavation. 1 Shift.
O. 20. c. 75. 95.	Bunking Mined. D.O. for 29th Battery	"	1	5	7 bunks built and wired complete. 1 table built.	
	6th. FCs HQ Accommodation	"	16	-	Building accommodation for personnel of Coy HQ.	
P. 25. b. 1. 2. to P. 25. b. 3. 1.	Digging. C.T.	Lt ELSUM.	5	100	C.T. dug between references given to average depth of 3' 3" and average width of 2'	
O. 24. c. 1. 2.	R.A.P. Deep Dig Out	Lt. SEXTON.	8	24.	M. Face. driven 2' " 2 " " 1' 6"	4 Shifts, 2 Sprs. 6 Inf.
P. 25. b. 1. 2. to P. 25. b. 3. 1.	Deepening & Widening C.T.	"	18	-	Deepened to average of 4' Widened to average of 2' 9" at top " " " 1' 6" at bottom.	
N. 16. d. 5. 3.	Timber Cutting.	Lt DAVIES.	8	-	10 logs cut and delivered to 3rd Pioneer Workshop.	

E. Weaver

6TH FIELD COMPANY ENGINEERS A.I.F.

MS

Appendix

6th

208

Ref. No. 62^D 6th FIELD CO AUSTRALIAN ENGINEERS
 Works Report for 24 hours ending 0 A.M. 7/7/18

Location	Work	Person in Charge	No. of men employed		Particulars	Remarks
			Eng.	Inf.		
O15.b. 8.8.	Mined Atty. D.O.	L CARLETON.	2	10	Excavation 2' and 1 temp. set. 4'x7' face.	2 shifts 1 spr. 5 inf.
N24 b. 70.95.	Bunking D.O. at 7th A.F.A. H.Q.s.	"	1	1	Put in one 9' steel set + lagging. Wired 6 bunks.	
O27.d. 70.75.	Bunking D.O. for 26th Bty. A.F.A.	"	4	6	Building and wiring 16 bunks. Cleaning off chalk floor of D.O.	2 shifts 2 sprs. 3 inf.
	6th F.G. H.Q. Accommodation	"	16	-	Building accommodation for personnel of Cor H.Q.	
O24.C. 1.2.	R.A.P. Deep. D.O.	L SEXTON.	8	24	No1 Face driven 1/2" 6" No2 Face " 1'6"	4 shifts 2 sprs. 6 inf.
	Handing Over.	L HILL.	-	-	No1 section handing over to 5th F.G.A.E.	
	Handing Over.	L ELSUM.	-	-	No2 section handing over to 5th F.G.A.E.	
N.16.d. 5.3.	Timber Cutting.	L DAVIES	10	-	11 logs felled and delivered to 3rd Aust. Pioneers Workshop.	
P20 d. 8.2.	Power Buzzer Shelter. (4.2' proof.)	L SEXTON.	1	6	Excavated 9'x8' to 3'6" deep. " " 6 yds of trench 4' deep.	
do.	do.	"	1	6	O.C. C Coy, 21st Bn. would not allow excavation to be continued for fear of drawing fire.	



Capt Sale
 WMS

W.C. Penahaw
 for O.C. 6 & 7 COE

Appendix
 WCF

209

90 ✓

APPENDIX 64. 210

90

VAIRE WOOD SECTOR.

Grid Lines Approximate.

Scale 1:20,000.



210

Original

Air. Photos -
Traces & maps -
in connection -
with area & -
operation 4/7/18

1st Period in Line
1st to 7th July 1918

Orig

Air Photos -
Traces & Maps
in connection
with area &
operation 4/7/18.

1st period in
1-7th July

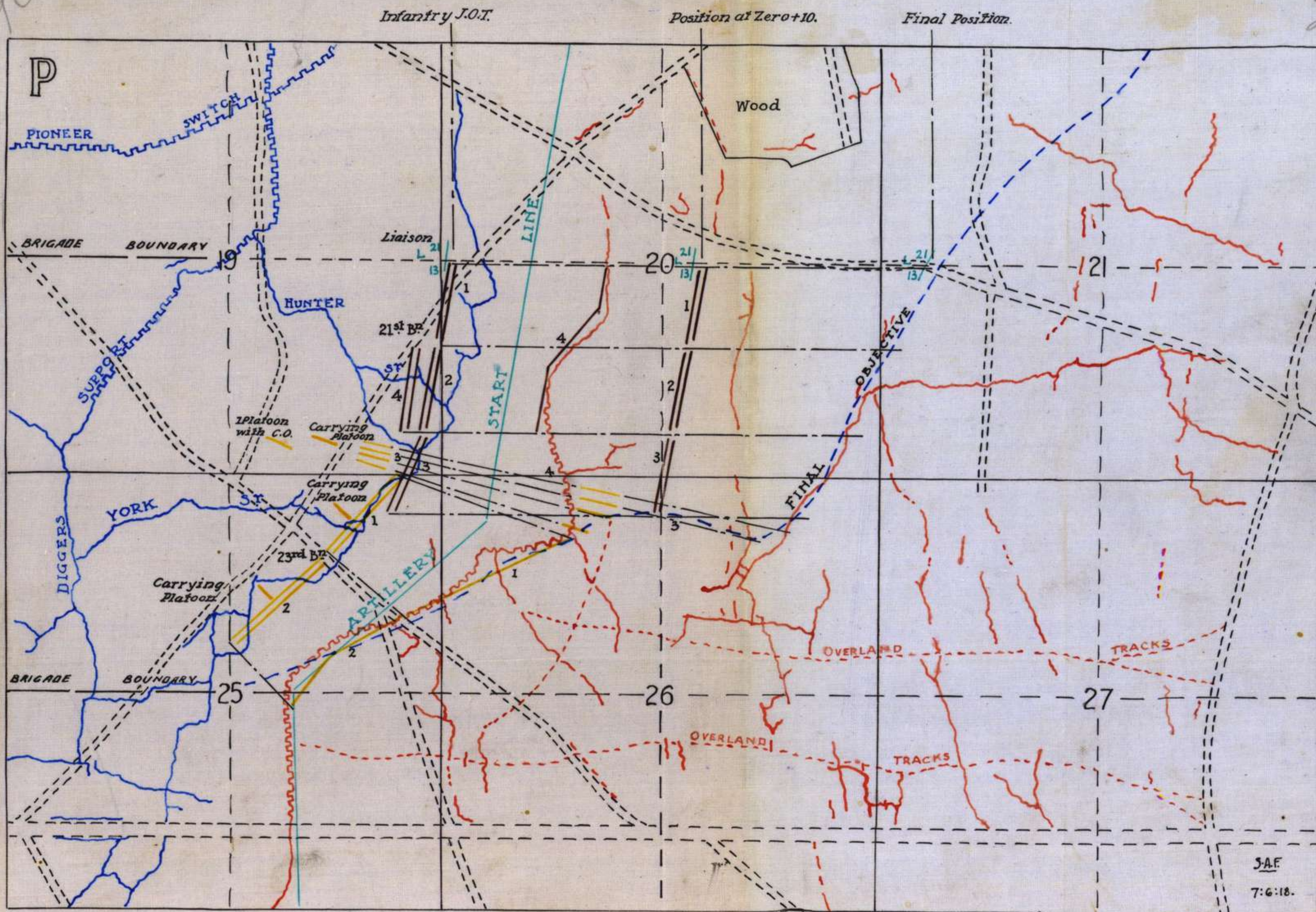
64

APPENDIX 64. 210

- 6th Australian Infantry Brigade -
- Formation and Lines of Advance from Zero, July 4th 1918. -

90

211



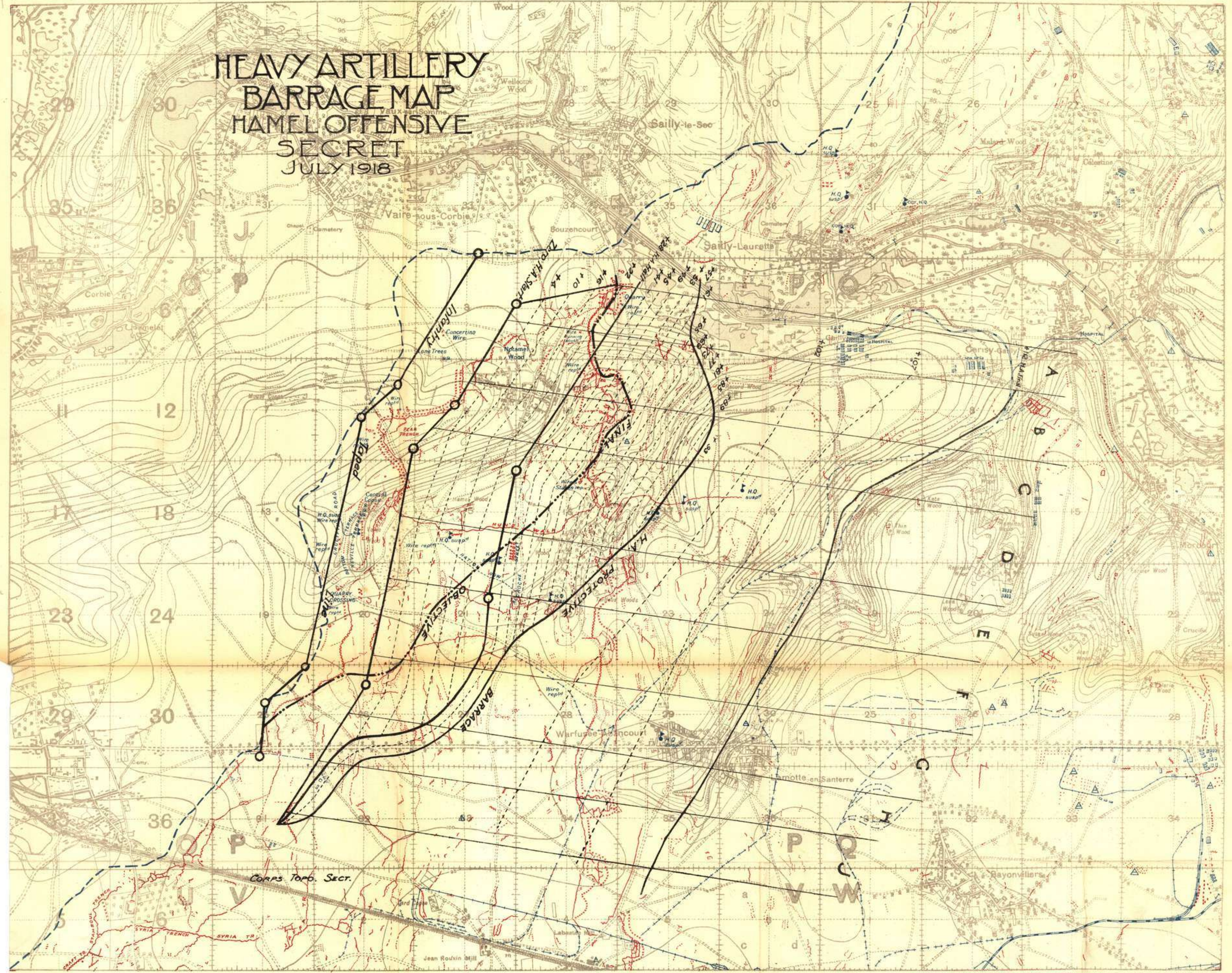
BAYONVILLERS

Parts of 62°N.W., 62°N.E., 62°S.W. & 62°S.E.

EDITION I.

1:20,000

HEAVY ARTILLERY
BARRAGE MAP
HAMEL OFFENSIVE
SECRET
JULY 1918



Approximate British Front Line - - - - 22-6-18

Scale - 1:20,000

TRENCHES CORRECTED FROM INFORMATION RECEIVED UP TO 24-6-18.

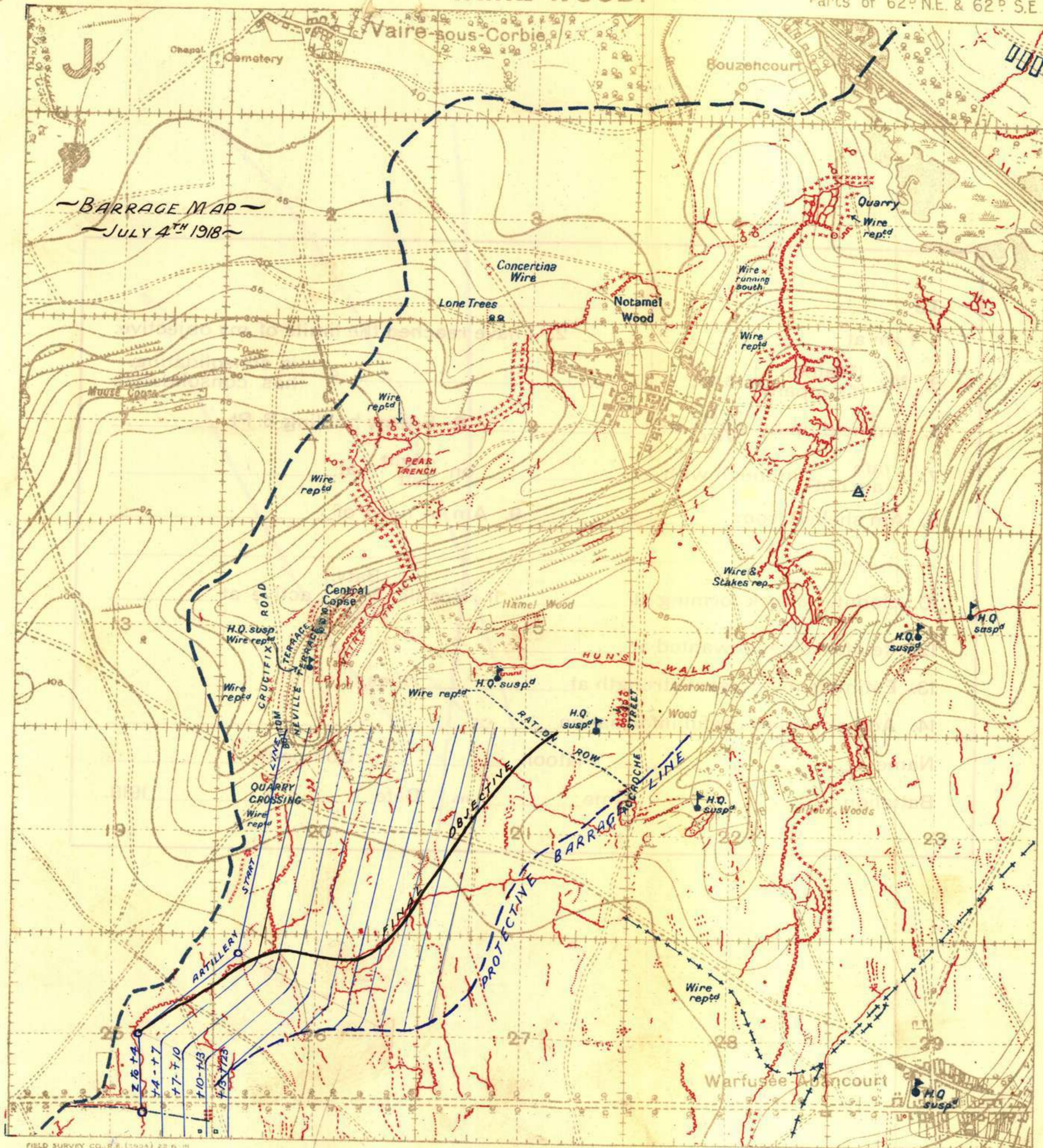
90

1:20,000

VAIRE WOOD.

Parts of 62° NE. & 62° S.E.

213



FIELD SURVEY CO., R.E. (2904) 22 6 18

Scale: 1:20,000
YARDS 1000

Approximate British Front Line ——— 22-6-18

TRENCHES CORRECTED FROM INFORMATION RECEIVED UP TO 24-6-18.

64 214

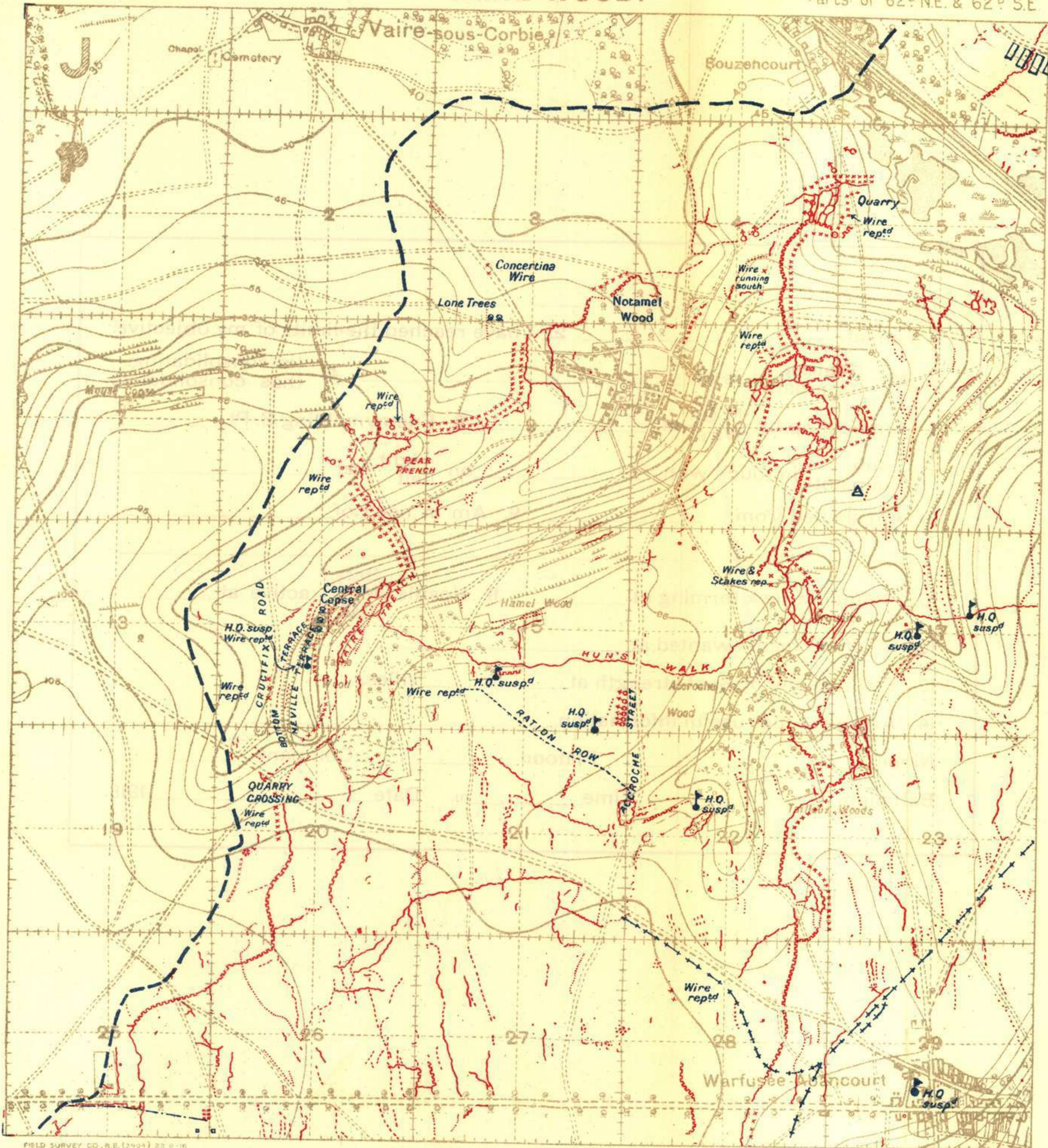
90

1:20,000

VAIRE WOOD.

Parts of 62° NE. & 62° S.E.

214



FIELD SURVEY CO., R.E. (2404) 20 0-18

Scale: 1:20,000

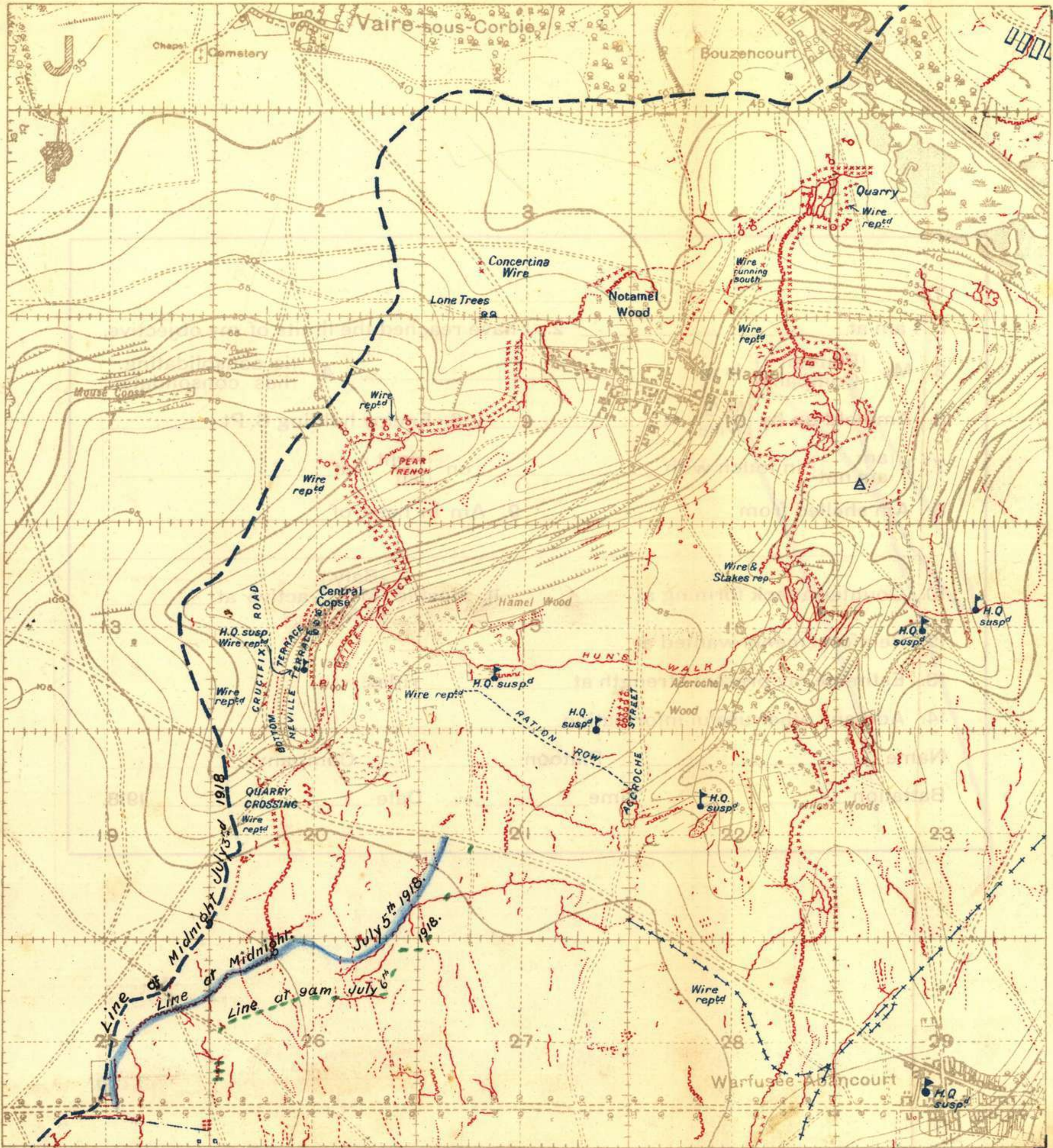
Approximate British Front Line --- 22-6-18

TRENCHES CORRECTED FROM INFORMATION RECEIVED UP TO 24-6-18.

1:20,000

VAIRE WOOD.

Parts of 62° NE & 62° S.E.



FIELD SURVEY CO., R.E. (3904) 22-6-18

YARDS 1000

Scale: 1:20,000

1000 YARDS

Approximate British Front Line ———— 22-6-18

TRENCHES CORRECTED FROM INFORMATION RECEIVED UP TO 24-6-18.

90



APPENDIX. 64.

2/16



93

Appendix

64

217



M. 3. R. O. 156
 627 29. 6. 18 (7 p.m.)
 F = 10 1/4

Mortgage mont Wood

U.S. 5230

Monument

Appendix

64



R. 3. R. O. 151
629 29. 6. 18 (7 pm)
F. 10/14

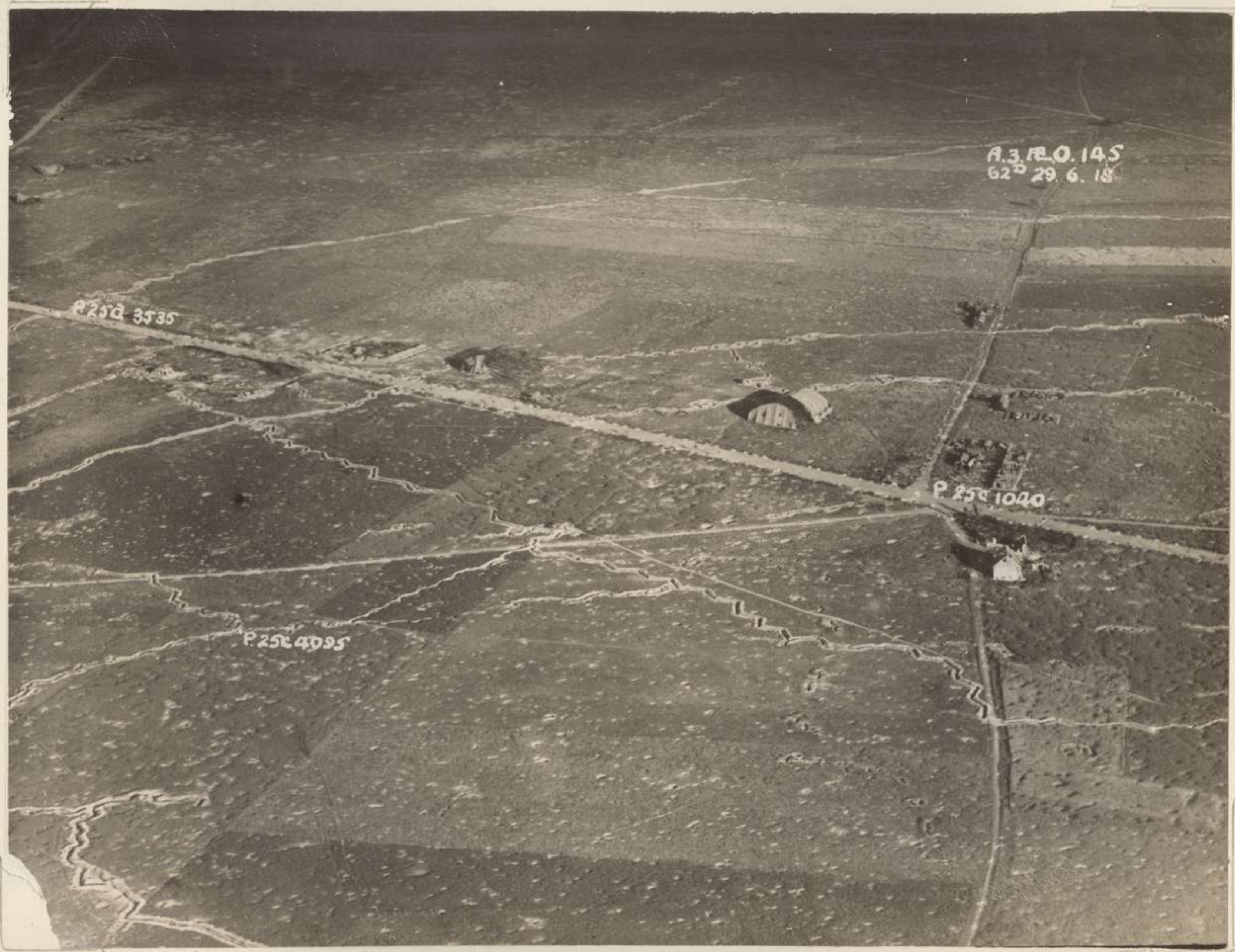
P. 27d 5040

P. 205 1035

P. 2566535

Appendix
64

219



A.3. P.O. 145
62° 29.6. 18

P 25c 3535

P 25c 4095

P 25c 1040

Appendix
64

Appendix 64



64

93 ✓



Appendix

64

200



93 ✓

Appendix
64

2793



Appendix

64

724



Spencer

Appendix
64

222

36

931

82.E.A.11D2
62.D.P.186d.24.a.b.Q.13c.19.a.
30.6.18. (6-30)
F = 8 1/2



Appendix

64

298

90 ✓



Appendix *64*

226

937



Appendix

64

229



B2: A. 1189.
62. D. P. 27.
30: 6. 18. (6-30)
F: 8/2

APPENDIX.

64

278

96



82. E. A. 1188.
62. D. P. 28.
30. 6. 18. (6-30)
F. 8 1/2"

Appendix

GH

229.