

AWM4
Australian Imperial Force unit war diaries,
1914-18 War

Flying Corps

Item number: 8/4/9 Part 3

Title: No 1 Squadron, Australian Flying
Corps

September 1918



AWM4-8/4/9PART3



WAR DIARY

SEPTEMBER

1918

APPENDIX 6.

PHOTOGRAPHS (ASPECT).

TRIPPLICATE



WAR

DIARY

JULY 1918

APPENDIX _____ 6

PHOTOGRAPHS.

* * *

Triplicate

AINN 3224. COUNTRY NEAR AZRAK, 10.455, 11.9.18. 3000 FT.



AINN 3225. COUNTRY NEAR AZRAK, 10.455, 11.9.18. 3000 FT.





PI. NN 3365 CAPTURED. H.T. FERWEH BALATA ROAD. 1000 FT. 15,000 H. 24. 5. 18



PI. NN 3370. CAPTURED. H.T. FERWEH BALATA ROAD. 1000 FT. 15,000 H. 24. 5. 18



AINN 3354. 10.30h . 24.9. 18. DERRAA - 5500 FT.



AINN 3356. 15.00h . 24.9. 18. COLUMN OF PRISONERS TAIYEBEH. 1000 FT.

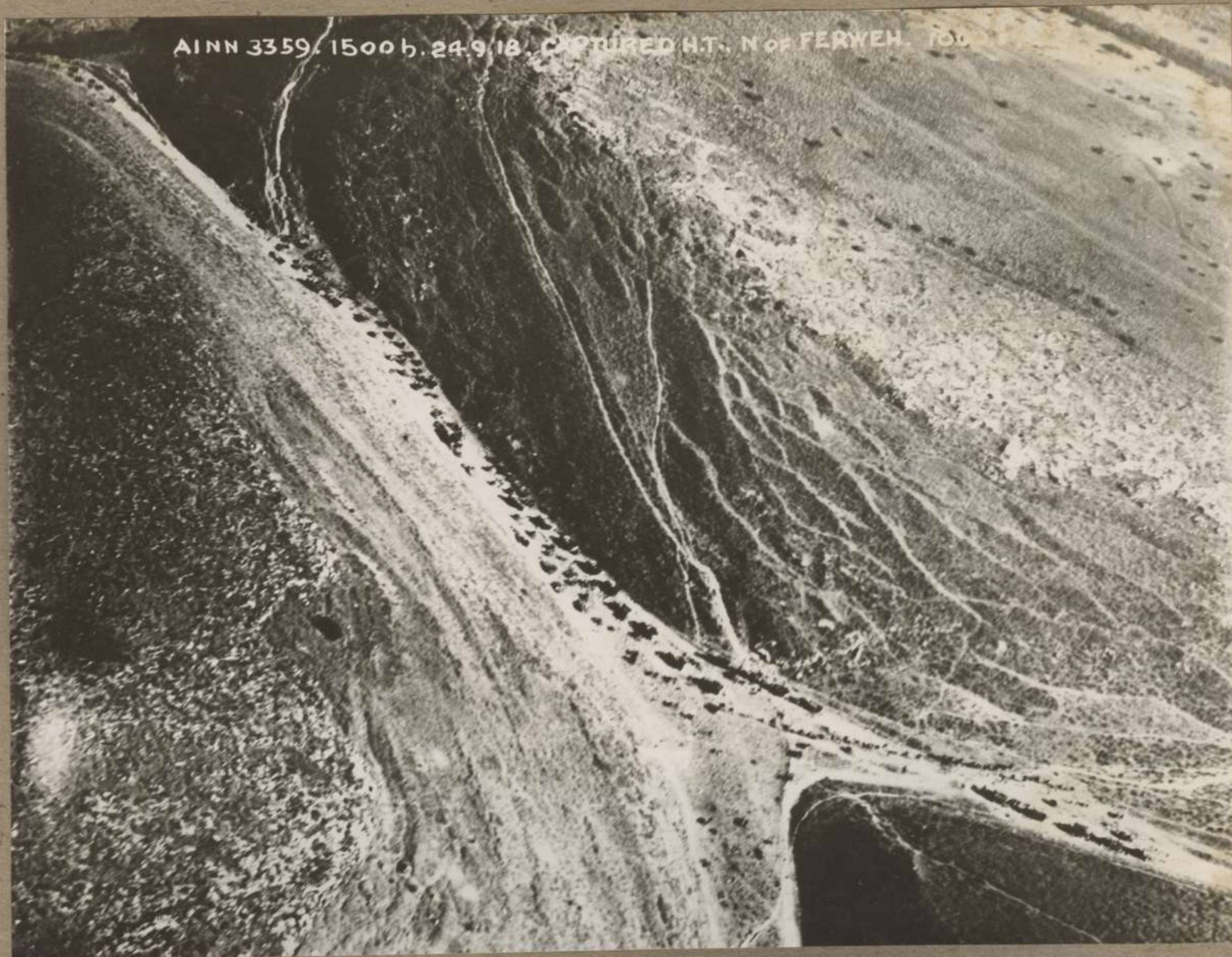


AINN 3357. 1500h, 24.9.18.

CAPTURED HT.
ANEFTA - TUL KERAM ROAD
1000 FT.



AINN 3358. 1500h, 24.9.18. CAPTURED HT. FERWEH - BALATA ROAD 1000 FT.



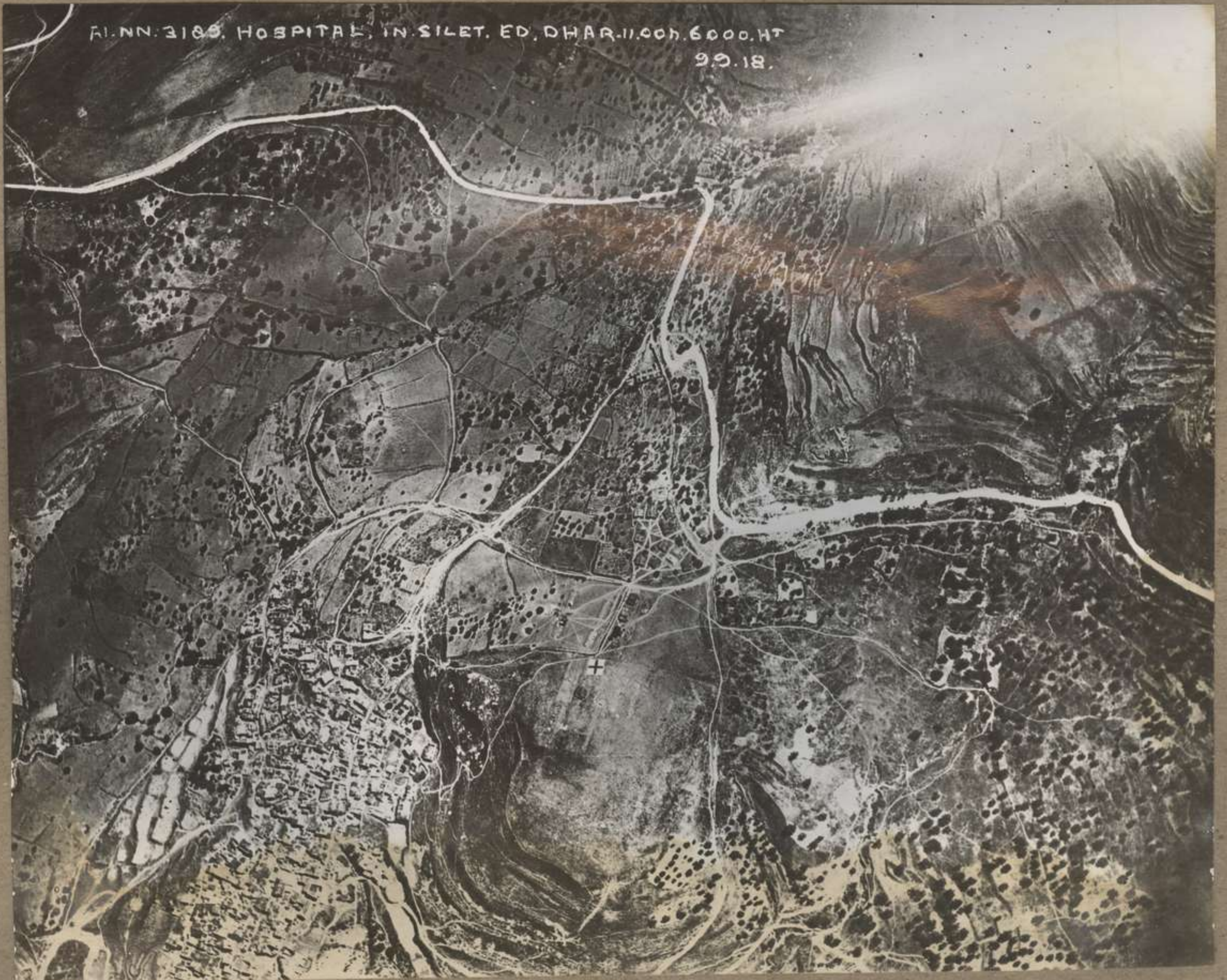
AINN 3359. 1500 h. 24.9.18. CAPTURED H.T. N OF FERWEH. 100



AINN 3360. 1500 h. 24.9.18. CAPTURED H.T. FERWEH-BALATA ROAD. 1000 FT.



ALNN. 3191. NABLUS FROM WEST. 11,000 FT.



ALNN. 3189. HOSPITAL IN SILET. ED. DHAR. 11,000 FT. 9.9.18.

AINN 3196.07.30 h .11.9.18. BRIDGE. AT EL HOWEIJ, 9000 FT. FROM S.



AINN 3223. FORT & PALMS. AZRAK. 10.45. 11.9.18. 3000 FT.





AINN 3377. 1500 h. 24.9.18. CAPTURED ROLLING STOCK. TUL KERAM. 1000 FT.



AINN 3378. 1500 b. 24.9.18. DESTROYED BUILDING
N. GERMAN G.H.Q. NABLUS. 1000 FT.



AINN 3367, 1500h 24.9.18 CAPTURED MT. N OF H 1000 FT



AINN. 3368. CAPTURED HORSE TRANSPORT. ANEBTR. TULKERAM ROAD. 1,000 FT 15,000h. 24.9.18

AINN 3180. KASTAL. FROM EAST. 0630h 4 9 18. Ht 7000



AINN 3184. 0745h. 7.9.18. ES. SALT. FROM N. 3000 FT.





A.I.N.N. 3185. 08.30h. 7.9.18. FROM S.E.

C5/W.306.



A.I.N.N. 3186. TULKERAM. FROM SOUTH WEST. 10.40h. 8.000ft. 9.9.18



AI NN 3187. ANEST. 10.50h. 7.000HT. 9.9.18.



AI NN 3188. STATION IN. DE/B.24. 11.00h. 6.000HT. 9.9.18.



AINN 3363. 1500 h. 24.9.18. CAPTURED TRANSPORT
FERWEH - BALATA ROAD. 1000 FT.



AINN 3364. 1500 h. 24.9.18. CAPTURED TRANSPORT TUL KERAM - ANEBTA RD. 1000 FT

AINN 3361 .1500 h. 24.9.18. NABLUS . 1000 FT.



AINN 3362 .1500 h. 24.9.18. RAILWAY CUTTING W OF NABLUS. 1000 FT.





A1NN 3190. MESSURICH STATION. 11104. 6.000. HT 9.9. 18.



A1NN 3192. 0700 b. 11.9. 18. ROAD & WADI NW. OF AMMAN FROM SE. 9000 FT.



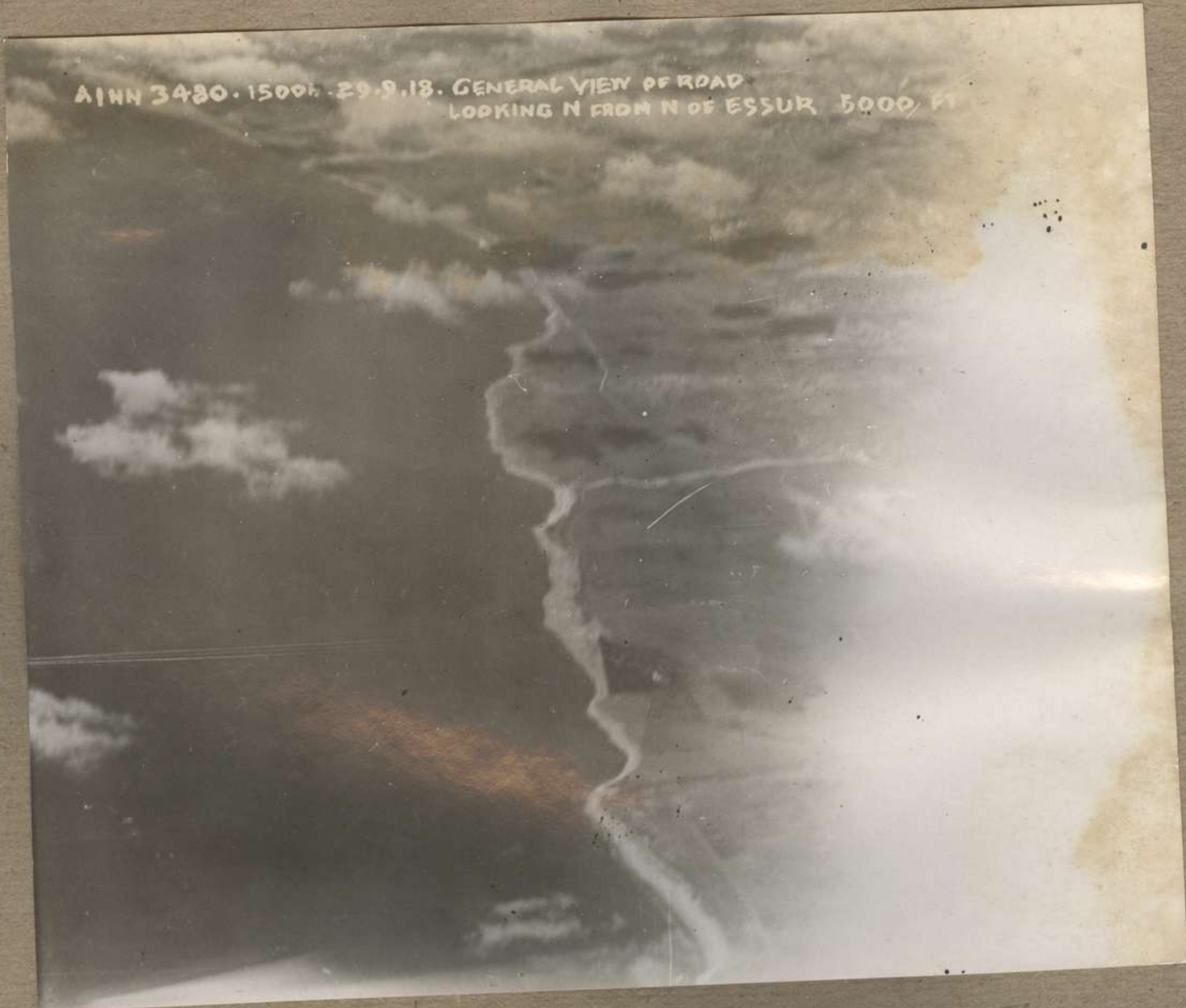


AINN 3478. 1500 ft. 29.9.18 ROAD LOOKING N FROM SAIDA. 5000 FT

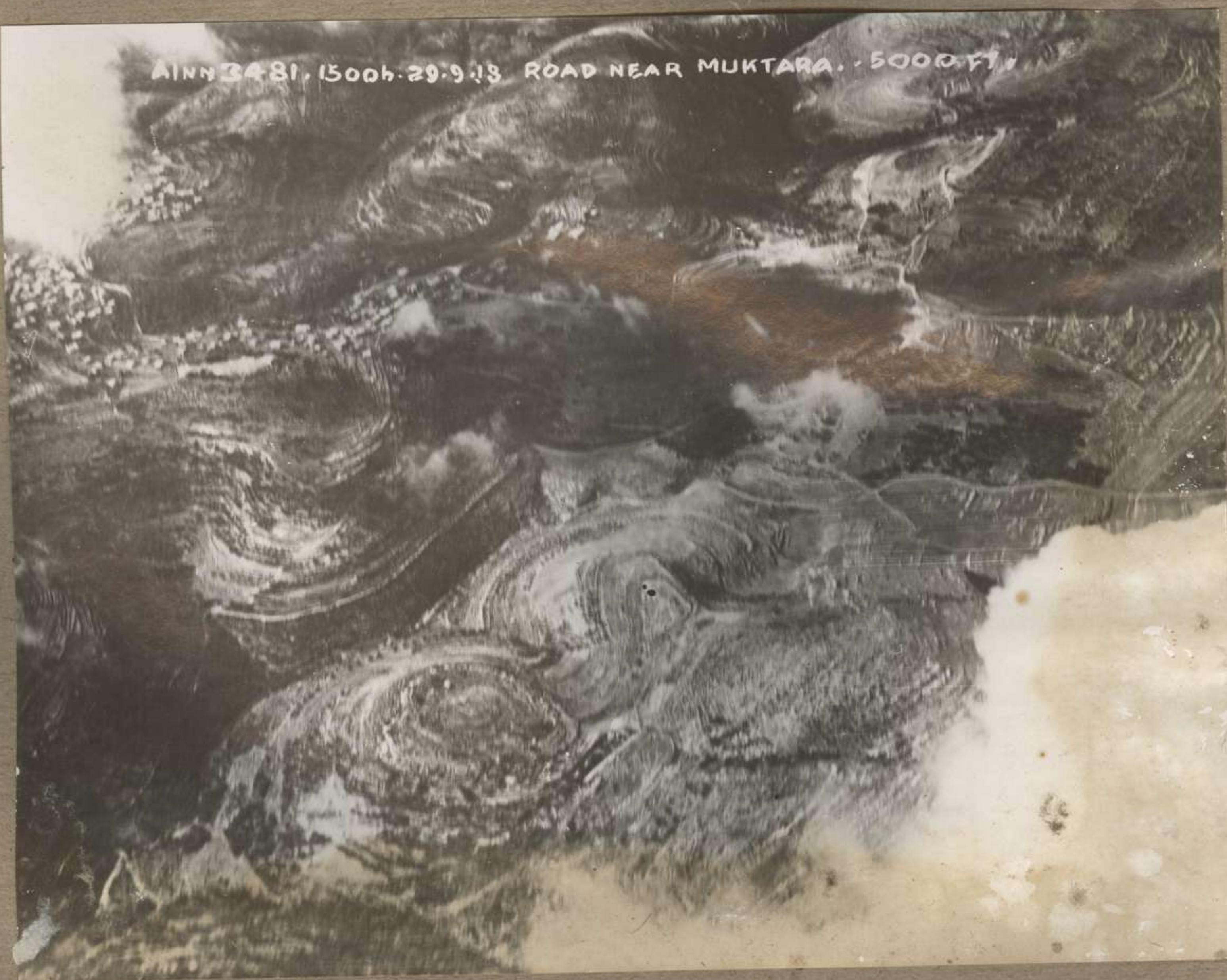


AINN 3479 1500 ft. 29.9.18. LOOKING N FROM S OF SAIDA. 5000 FT.

A11N 3480. 1500h. 29.9.18. GENERAL VIEW OF ROAD
LOOKING N FROM N OF ESSUR. 5000 FT.



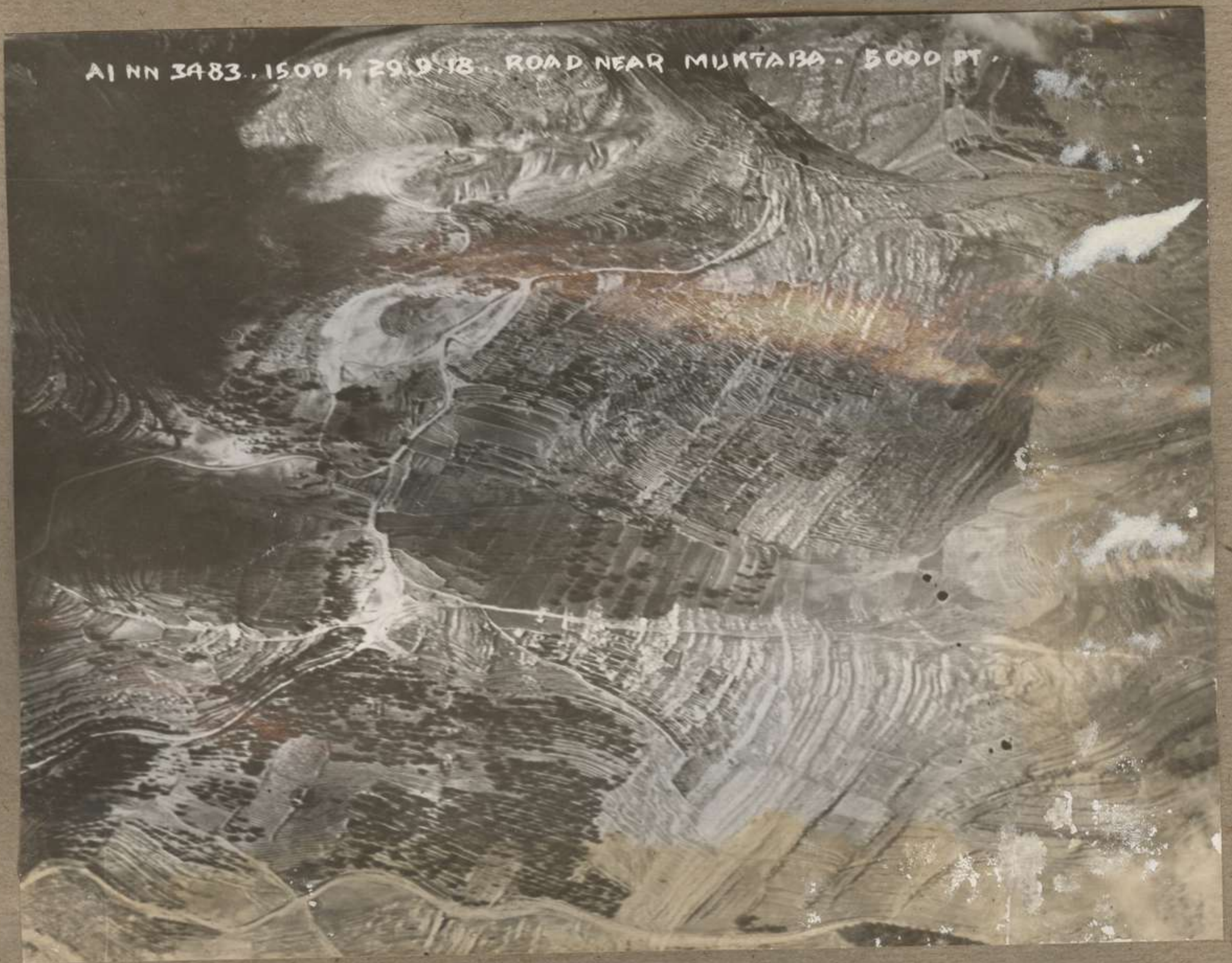
A11N 3481. 1500h. 29.9.18. ROAD NEAR MUKTARA. 5000 FT.

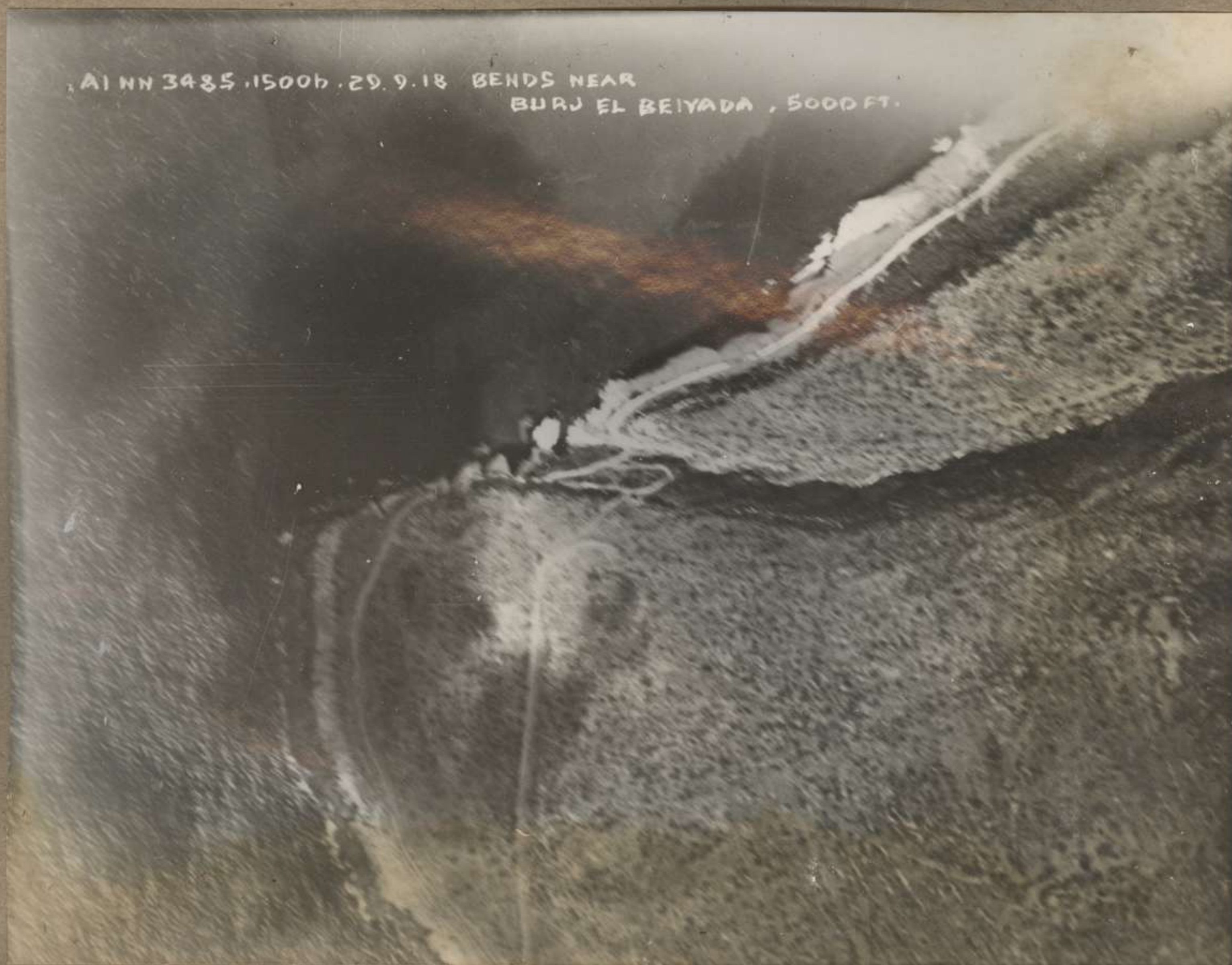
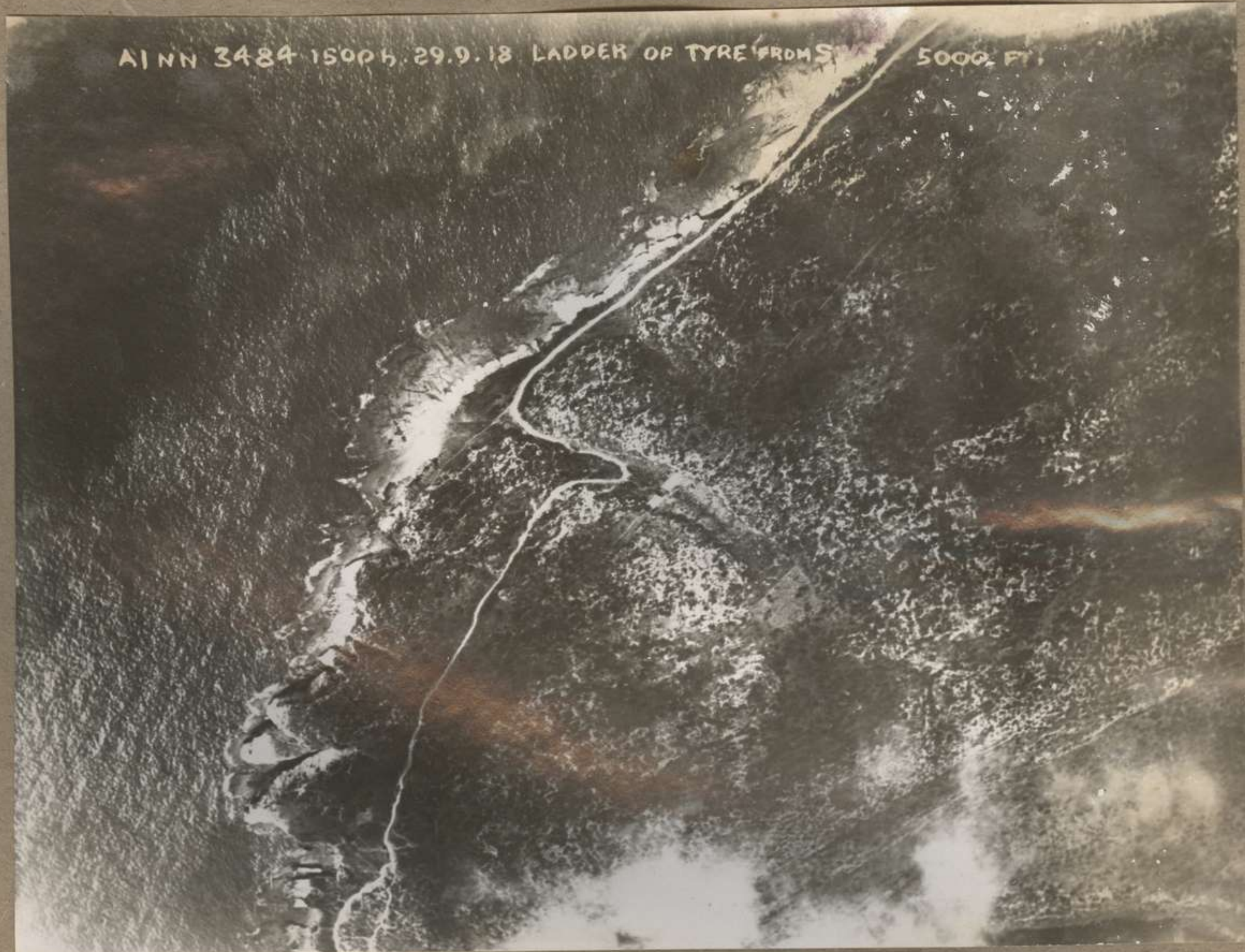


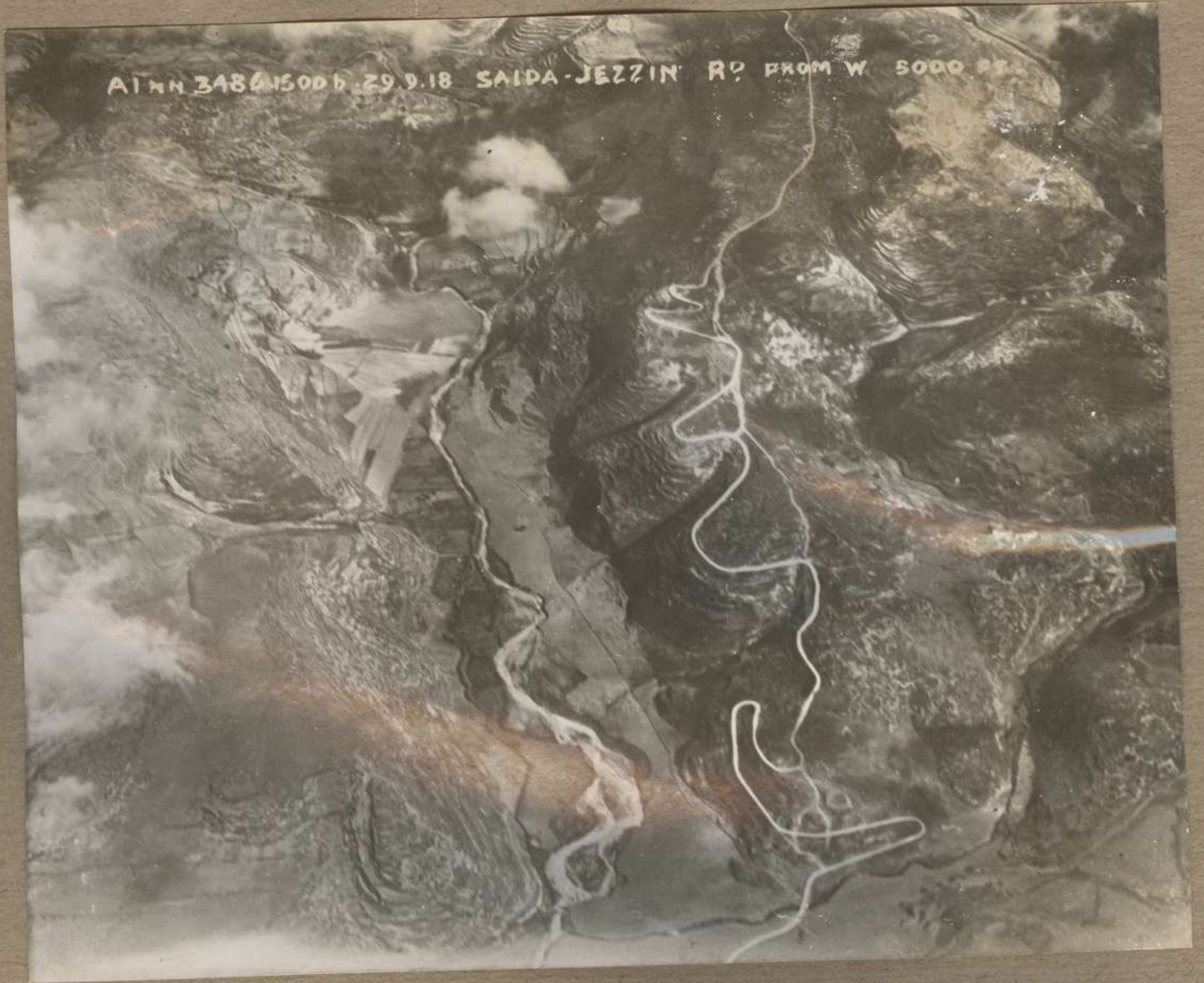
AINN 3482. 1500h. 29.9.18. CROSSING AT NEBI KASIM. 5000 FT.



AINN 3483. 1500h. 29.9.18. ROAD NEAR MUKTABA. 5000 FT.





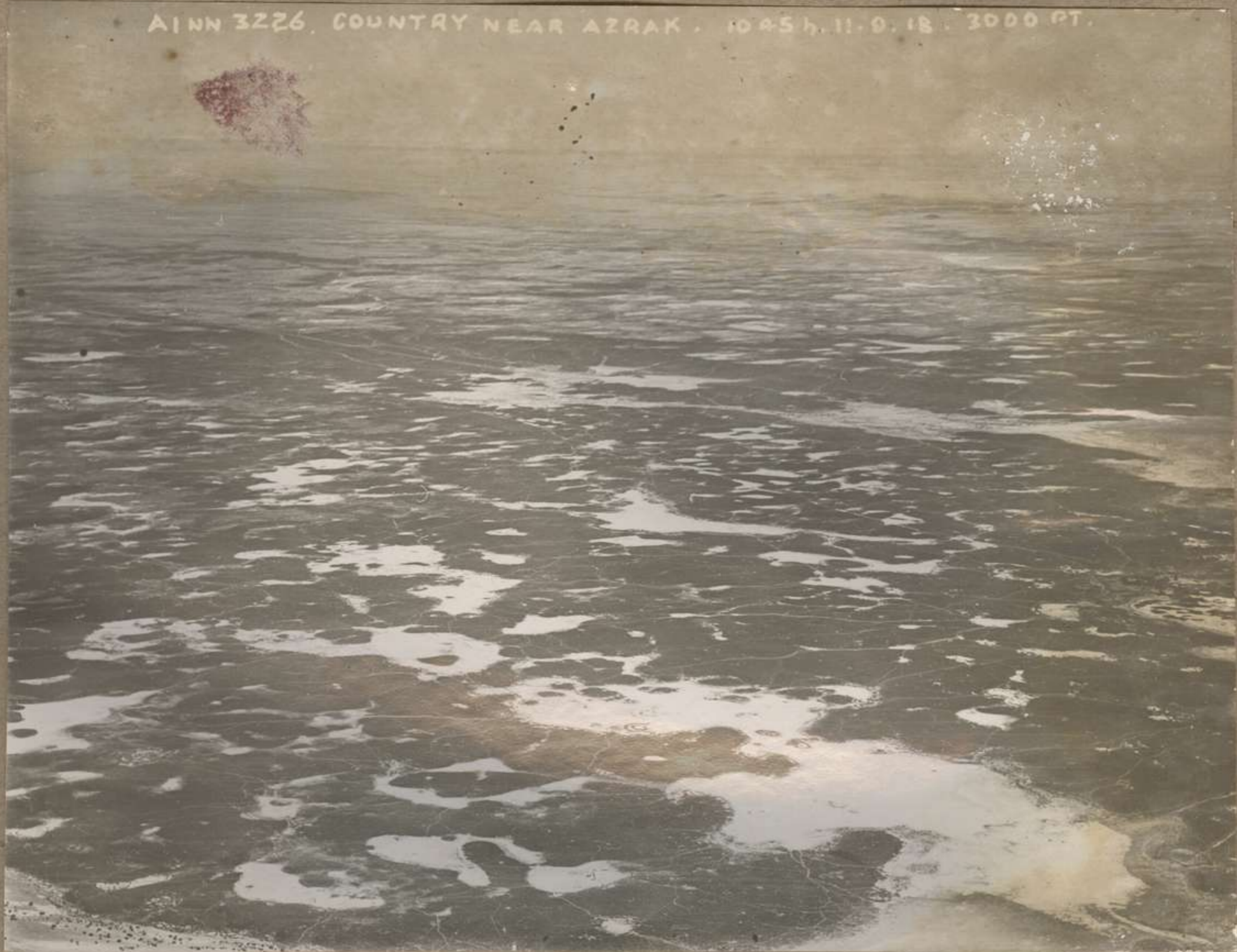


AINN 3486.1500h. 29.9.18 SAIDA-JEZZIN RD FROM W 5000 FT.

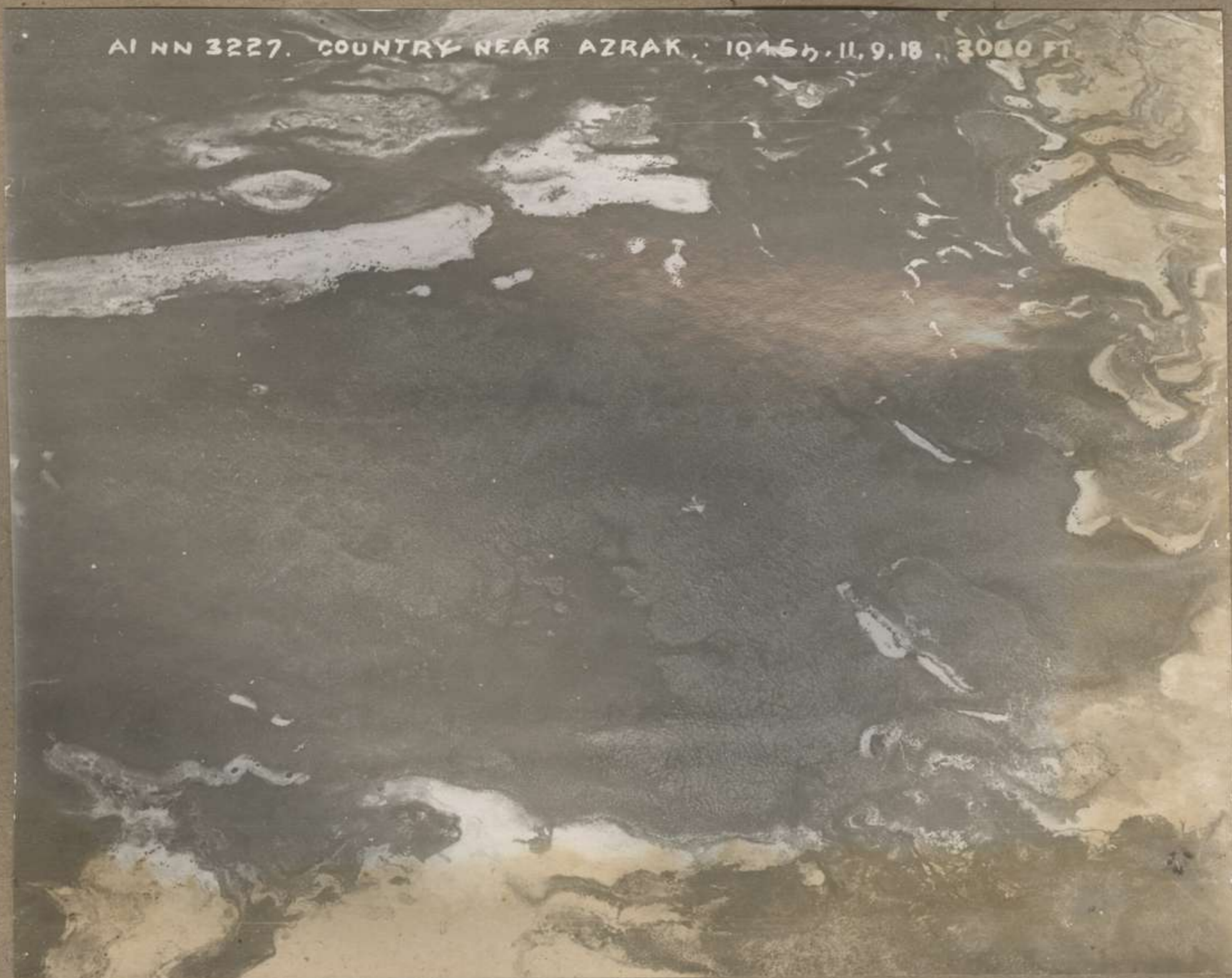


AINN 3487.1300h. 29.9.18 COAST ROAD LOOKING S. FROM N OF ES SUR. 5000 FT.

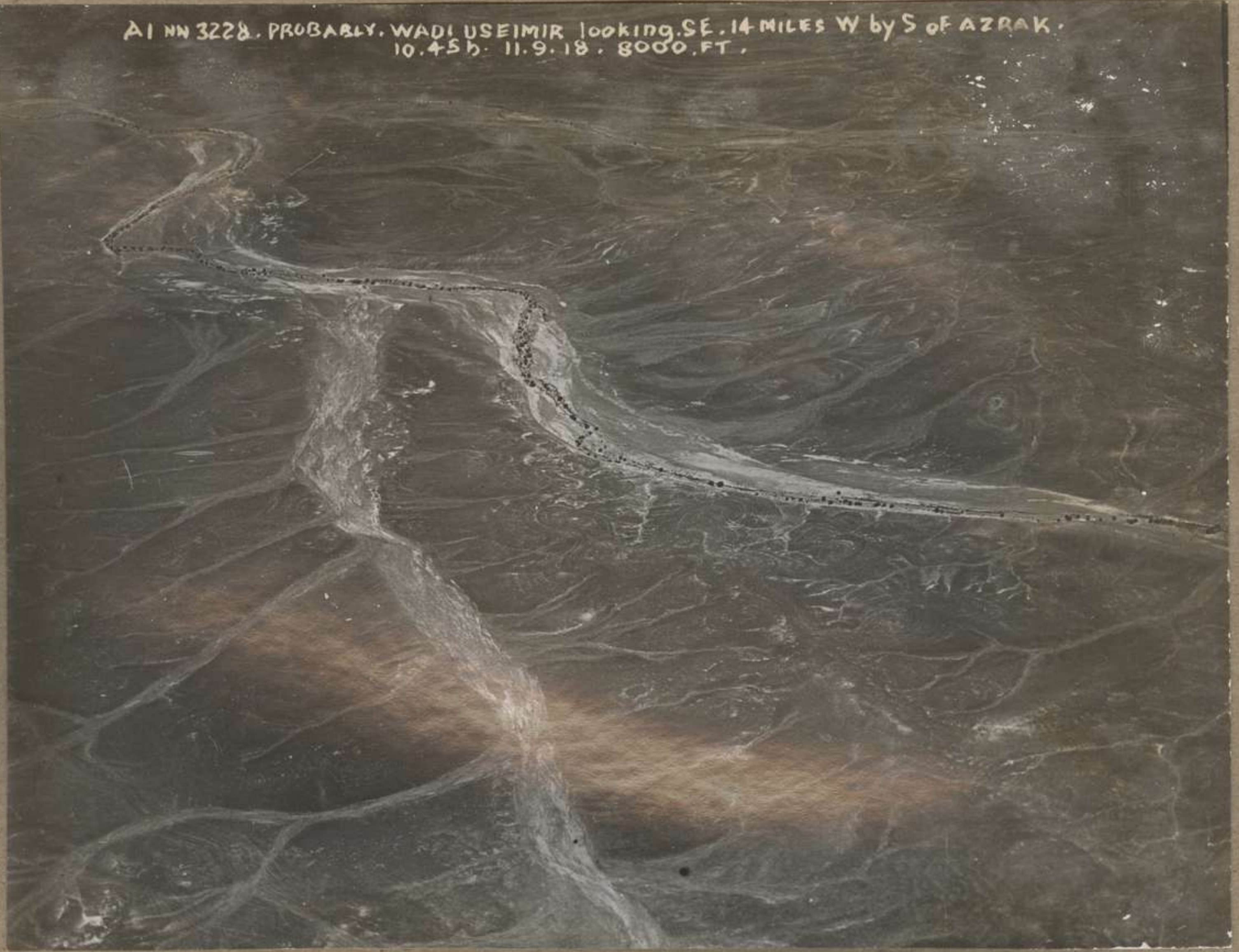
AINN 3226. COUNTRY NEAR AZRAK. 1045h. 11.9.18. 3000 FT.



AINN 3227. COUNTRY NEAR AZRAK. 1045h. 11.9.18. 3000 FT.



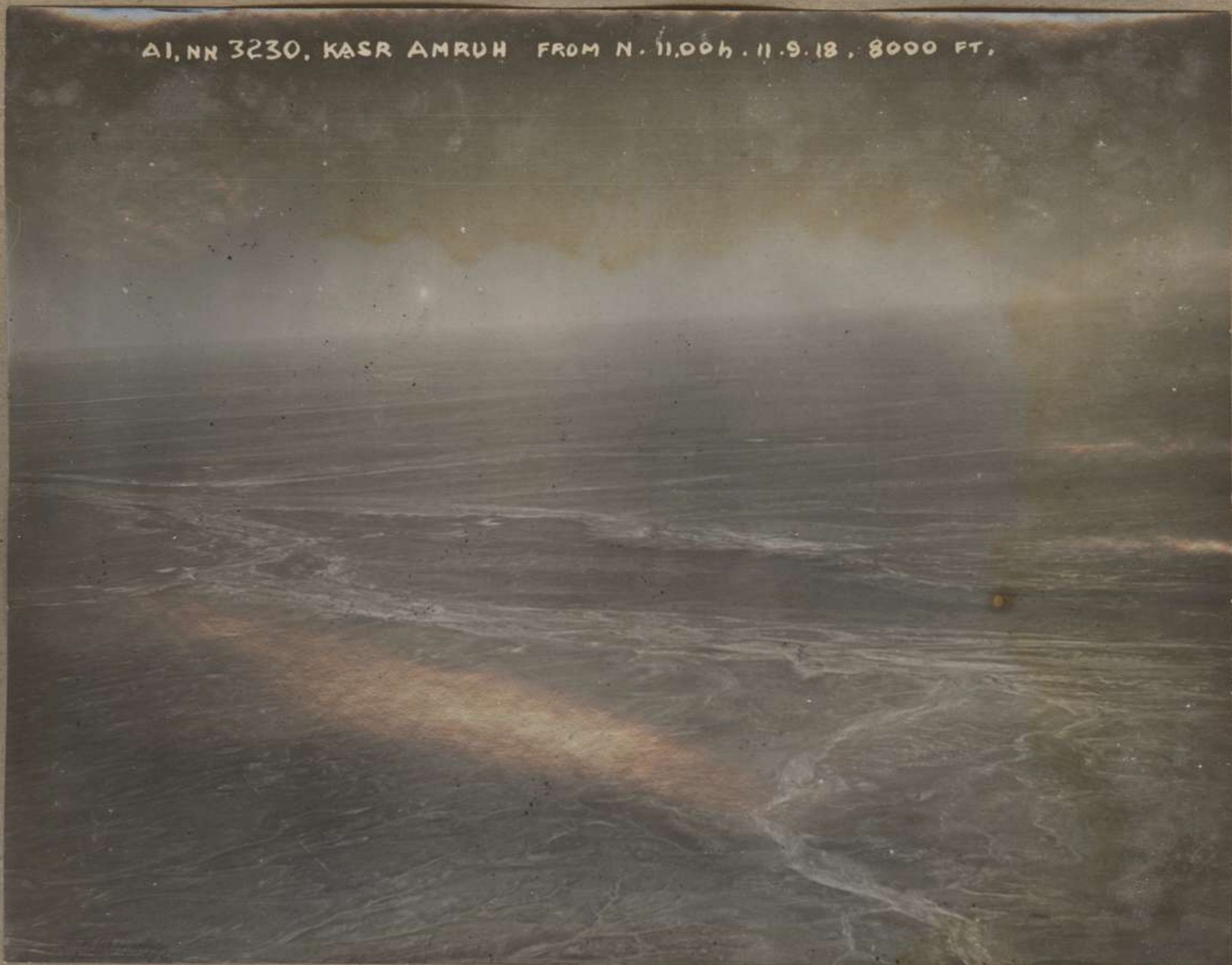
AINN 3228. PROBABLY, WADI USEIMIR looking SE. 14 MILES W by S of AZRAK.
10.45h. 11.9.18. 8000 FT.



AINN 3229. ABOUT MIDWAY BET. AMMAN & AZRAK. 11.00h. 11.9.18. 8000 FT.



AINN 3230. KASR AMRUH FROM N. 11.00h. 11.9.18. 8000 FT.



AINN 3232. CAMP NEAR AZRAK. 11.00h. 11.9.18. 8000 FT.



AI NN 3231. COUNTRY NEAR AZRAK. 11.00h, 11.9.18. 8000 FT.



AI NN 3233. CAMP NEAR AZRAK. 11.00h, 11.9.18. 8000 FT.



AINN 3313. 12.00 h. 14.9.18. KUS KUS AERODROME. 7000 FT.



AINN 3314. 12.15 h. 14.9.18 HAIFA FROM S. 7000 FT.



AI NN 3323. 15.10.16.9.18. DERRA. 7000 FT.



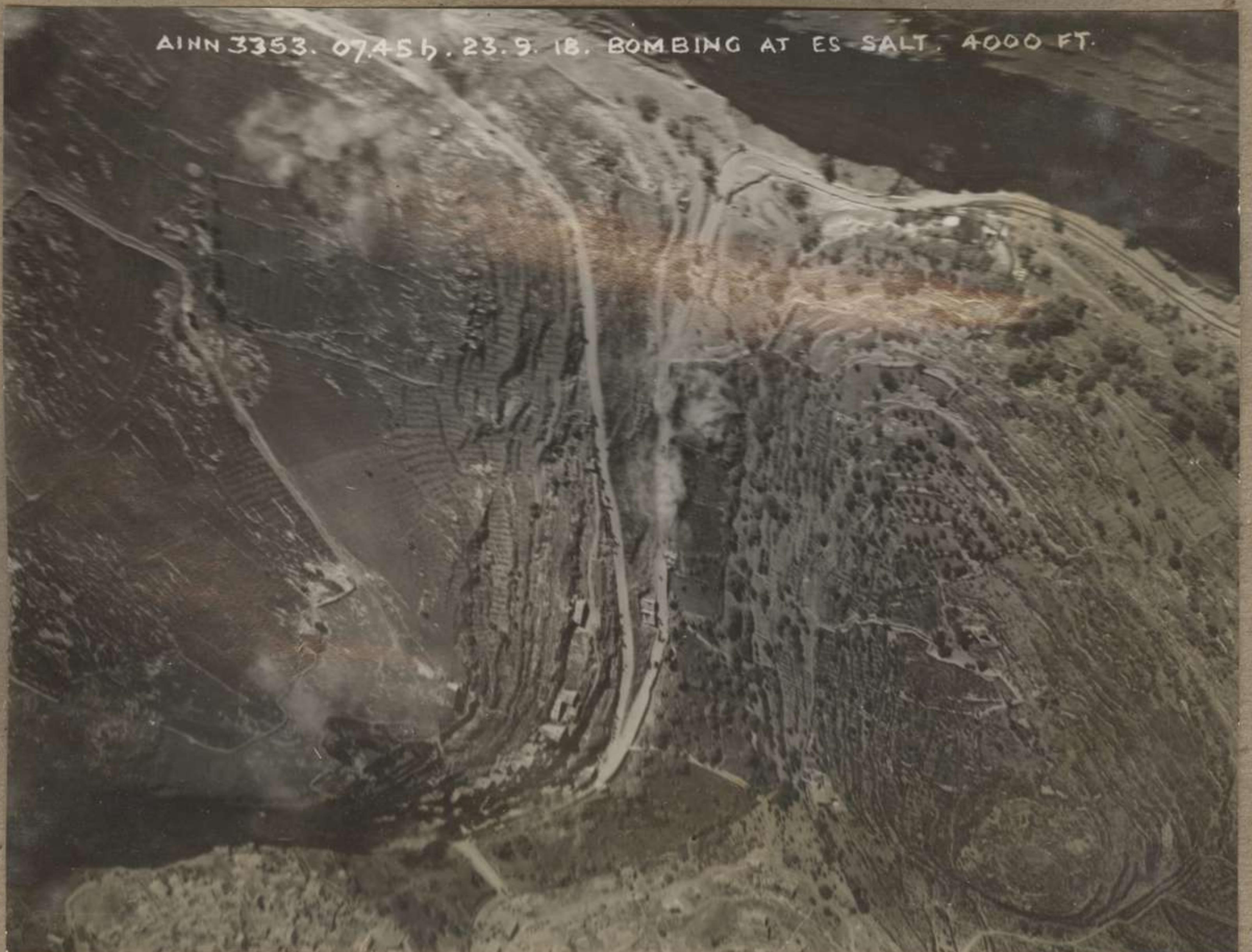
AI NN 3324. 15.10.16.9.18. DERRA. 7000 FT.

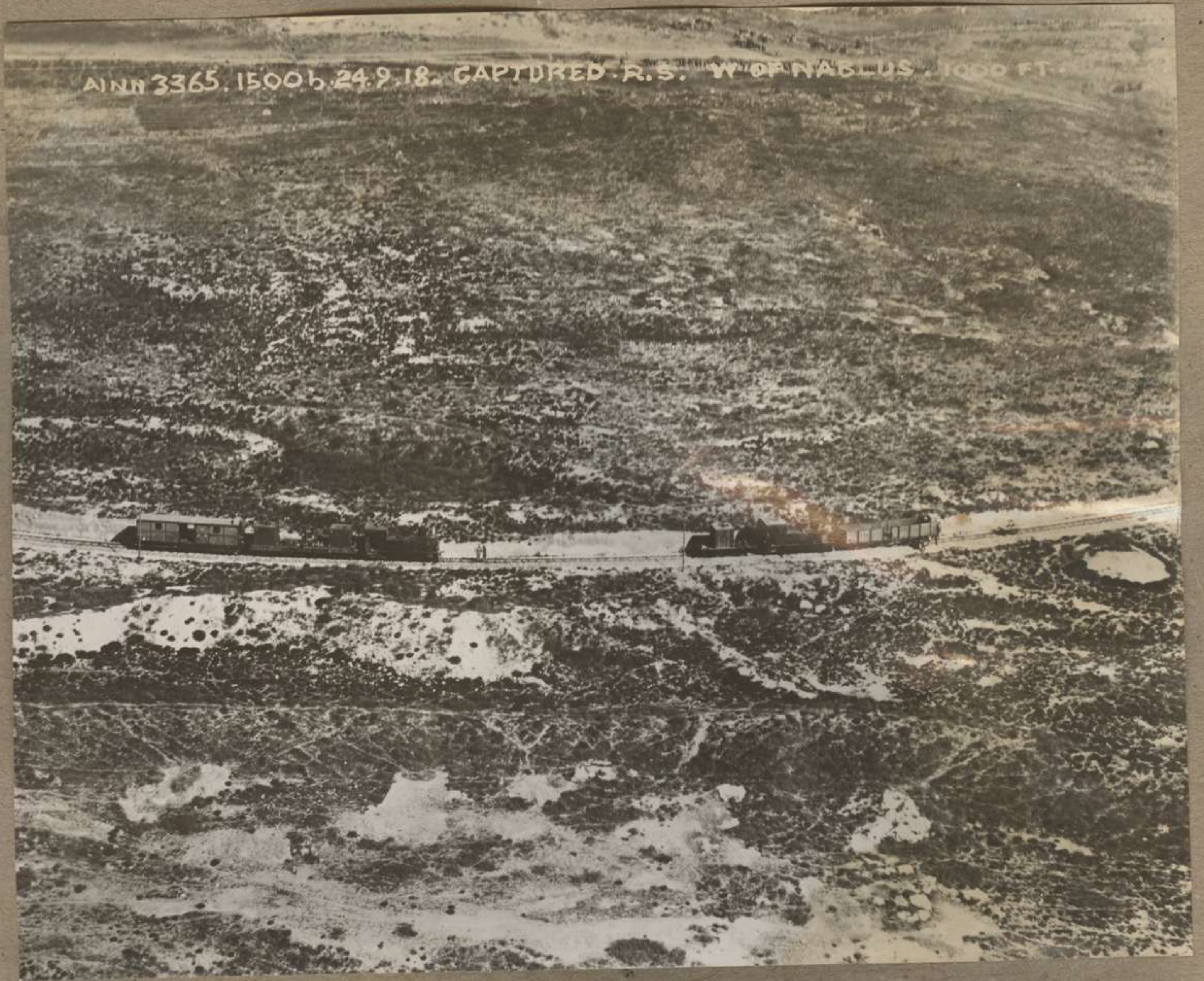


AINN 3325. 15.10 h. 16.9.18. DERRAA. 7000 FT.



AINN 3353. 07.45 h. 23.9.18. BOMBING AT ES SALT. 4000 FT.





AINN 3365. 15006. 24.9.18. CAPTURED R.S. W OF NABLUS. 1000 FT.



AINN/3366 15007. 24.9.18. CAPTURED R.S. FERWEH. 1000 FT.



RI.NN. 3371. CAPTURED. H.T. ANEGTA TULKERAM. ROAD. 1.000 FT. 15.00h. 24.9. 18

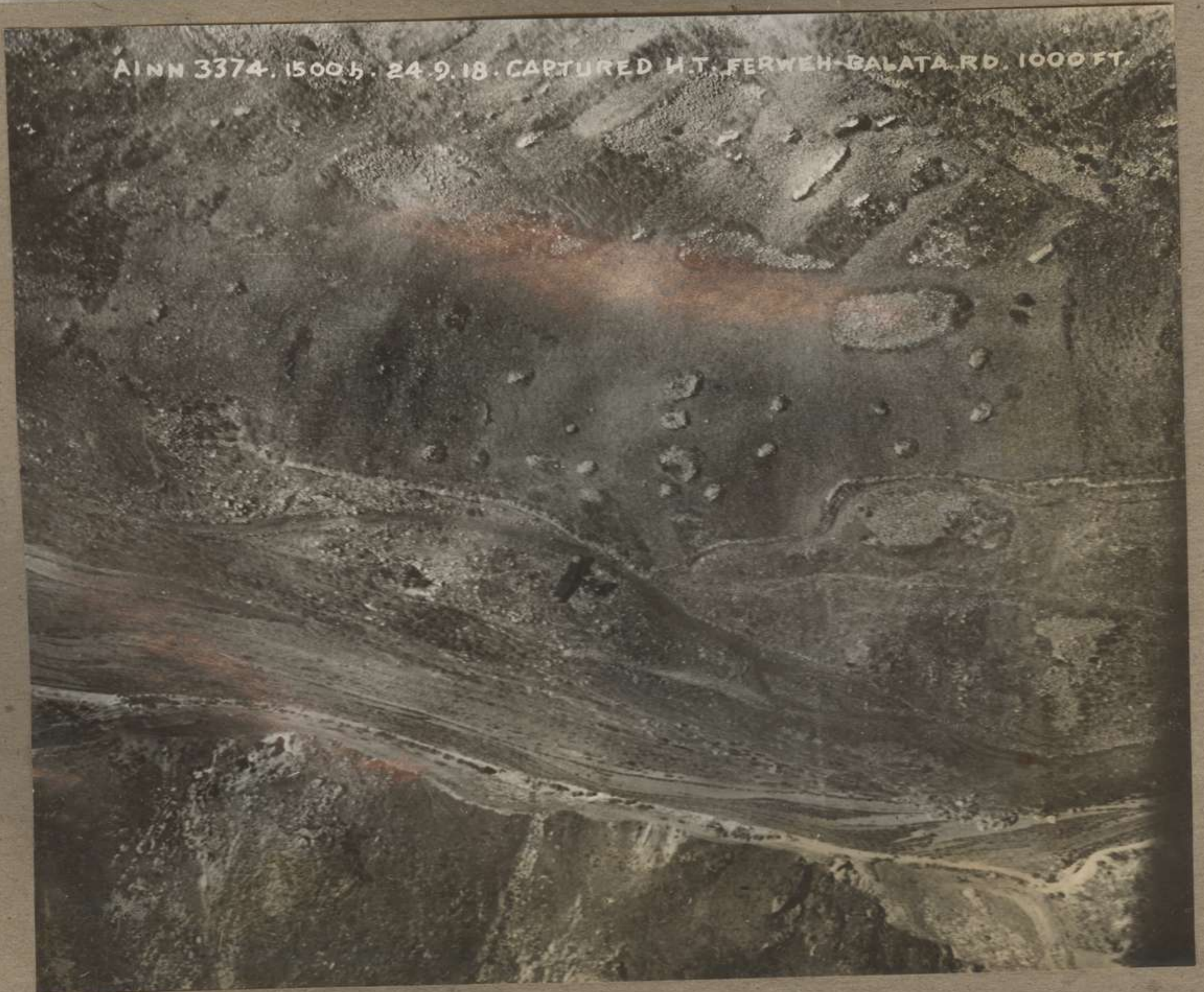


RI.NN. 3372. CAPTURED. H.T. FERWEH. BALATA. ROAD. 1.000 FT. 15.00h. 24.9. 18

AINN 3373 .1500b. 24 9. 18 CAPTURED HT. FERWEH-BALATA ROAD. 1000 FT.



AINN 3374 .1500b. 24 9. 18 CAPTURED H.T. FERWEH-BALATA RD. 1000 FT.



AINN 3375. 1500 h. 24.9.18. CAPTURED HT. N OF FERWEH. 1000 FT.



AINN 3376. 1500 h. 24.9.18. CAPTURED HT. AT TULKERAM. 1000 FT.

