

AWM4
Australian Imperial Force unit war diaries,
1914-18 War

Engineers

Item number: 14/7/31

Title: Headquarters 1st Australian
Divisional Engineers

July 1918



AWM4-14/7/31

CONFIDENTIAL.

ORIGINAL.
~~DUPLICATE.~~
~~TRIPLICATE.~~

Australian Imperial Force.

WAR DIARY

OF

HEADQUARTERS, 1st. AUSTRALIAN DIVISIONAL ENGINEERS.

FOR

J U L Y

1918

Signature of Officer compiling

R. Morling

Capt. & Adjt.

Signature of Officer Commanding

W. A. Henderson

Lt. Col.,

C.R.E., 1st. Australian Division,

Instructions regarding War Diaries and Intelligence Summaries are contained in F. S. Regs., Part II. and the Staff Manual respectively. Title pages will be prepared in manuscript.

WAR DIARY

or

INTELLIGENCE SUMMARY

(Erase heading not required.)

H. Q.,
1ST AUSTRALIAN
DIVL. ENGINEERS.

No.
Date

Army Form C. 2418.

ORIGINAL.
~~DUPLICATE.~~
~~TRIPPLICATE.~~

15

| Place | Date | Hour | Summary of Events and Information | Remarks and references to Appendices |
|-------------------------|---------------|------|--------------------------------------------------------------------------------------------------------------------------------------------------------------------------------------------------------------------------------------------------------------------------------|--------------------------------------|
| | | | Reference Maps: Sh.27 and Sh.36A 1/40,000. | |
| St.SYLVESTRE CAPPEL. | JULY. 1st. | | C.R.E. to forward Company and round COURTE CROIX Switch and ROUGE CROIX Switch, KLITE LOOP and defences left of STRAZEELE generally, with Major CROCKER 2nd.Field Company. Fine day. | <i>Bill</i> |
| do | 2nd. | | C.R.E. in office. Interviewed General GLASGOW re responsibility of Brigade Commanders for the construction of the defence works in their area. Adjutant to MARTYN Dump and 1st.Field Coy., and site of siding to be constructed at off-loading point for ammunition. Fine day. | <i>Bill</i> |
| do | 3rd. | | C.R.E. forward to MOOLENACKER inspected Support Line and STRAZEELE Defences also the new trench which runs from MERRIS Street to STRAZEELE Defences. Authority asked for this trench to be called TIFLIS STREET. Fine day. | <i>Bill</i> |
| do | 4th. | | C.R.E. to HAZEBROUCK with Lt.Col. VINEY 1st.Aust.Div. reference power plant for town water supply. In afternoon to Pioneer Bn.H.Q. and instructed them to carry on with this work. Fine day. | <i>Bill</i> |
| do | 5th. | | C.R.E. to ROUGE CROIX and COURTE CROIX Defences and new trench connecting STRAZEELE Outer Defences with MERRIS Street.- New trench to be called TIFLIS Street. Adjutant to 1st.Field Company re Railway Siding for D.A.C. Fine day. | <i>Bill</i> |
| do | 6th. | | C.R.E. in office in morning - C.R.E. and Adjutant to Railway Siding Job and to Divisional Train sports. Very quiet day. Fine. | <i>Bill</i> |
| do | 7th. | | C.R.E. round Support Line and STRAZEELE Defences also to Forward Field Company. In afternoon to Siding which is being constructed for D.A.C. at U.6.d. and then on to 29th.Div.R.E.Sports. | <i>Bill</i> |
| do | 8th. | | C.R.E. in office all day. Adjutant to 1st. and 3rd.Field Coy.Horse Lines and to see Adjutant Divisional Train re transport for R.E.Stores, then on to 3rd.Field Company billets. Dull day rain during the evening. | <i>Bill</i> |
| do | 9th. | | C.R.E. forward to MOOLENACKER and Support Line on the Left. Fine bright day. Quiet. | <i>Bill</i> |
| do | 10th. | | C.R.E. to see Town Major HAZEBROUCK and to ammunition Siding and 3rd.Field Company. Adjutant in office. Wet day and windy. | <i>Bill</i> |

Instructions regarding War Diaries and Intelligence Summaries are contained in F. S. Regs., Part II. and the Staff Manual respectively. Title pages will be prepared in manuscript.

WAR DIARY

or

INTELLIGENCE SUMMARY.

(Erase heading not required.)

H. Q.
1ST AUSTRALIAN
DIVL. ENGINEERS.

No.
Date

Army Form 2113

ORIGINAL.
~~DUPLICATE.~~
~~TRIPLICATE.~~

15

| Place | Date | Hour | Reference Maps Sh.27 and 36 A 1/40,000. | Summary of Events and Information | Remarks and references to Appendices |
|-----------------------|-------------|------|-----------------------------------------|----------------------------------------------------------------------------------------------------------------------------------------------------------------------------------------------------------------------------------------------------------------------|--------------------------------------|
| St. SYLVESTRE Cappel. | JULY. 10th. | | | C.R.E. out with Colonel VINEY inspecting new water supply arrangements for HAZEBROUCK. Adjutant to Field Companies. Fine day. | Bdp |
| do | 11th. | | | C.R.E. out to Town Major HAZEBROUCK, then to Ammunition Siding and 3rd. Field Company H.Q. Adjutant in office. Weather wet and windy. | Bdp |
| do | 12th. | | | C.R.E. to Forward Companies and Pioneer Bn. Wet day. Adjutant (Capt. Dowling) from Leave. | Bdp |
| do | 13th. | | | C.R.E. to forward area in early morning. Adjutant to Forward Field Companies in afternoon. Weather fine and clear. | Bdp |
| do | 14th. | | | C.R.E. to forward area in morning. Stores Officer proceeded on leave. Adjutant to Company Horselines and to 2nd. Field Company. American engineer officers (Colonel MARKHAM and Captain WALKER) arrive and are attached to D.E.H.Q. for experience. Weather showery. | Bdp |
| do | 15th. | | | C.R.E. and Adjutant in office all day with American Officers, explaining general methods of working etc. Weather fine and warm. | Bdp |
| do | 16th. | | | C.R.E. in office all day. Adjutant to MARTYN Dump with American Officers to show and explain R.E. Stores supply etc. Adjutant to Forward Field Companies re mines and bridges for demolitions. Rain in morning. Fine and sultry during afternoon. | Bdp |
| do | 17th. | | | C.R.E. to forward Field Companies in morning. American officers leave to rejoin their regiment. Weather showery. | Bdp |
| do | 18th. | | | C.R.E. in office most of the day. In afternoon to D.H.Q. to attend Conference. Adjutant to Company horselines. Weather fine and clear. | Bdp |
| do | 19th. | | | C.R.E. forward in morning to 3rd. Field Company and went round the works with Major SAVAGE. Adjutant in office all day. Fine cool day. | Bdp |
| do | 20th. | | | C.R.E. in office all day and to D.H.Q. Adjutant to Forward Field Companies. Odd showers and thunderstorms. | Bdp |

Instructions regarding War Diaries and Intelligence Summaries are contained in F. S. Regs., Part II. and the Staff Manual respectively. Title pages will be prepared in manuscript.

WAR DIARY

or

INTELLIGENCE SUMMARY

(Erase heading not required.)

| |
|------------------|
| H. Q. |
| 1ST AUSTRALIAN |
| DIVL. ENGINEERS. |
| No. |
| Date |

Army Form C. 2118.

ORIGINAL.
DUPLICATE.
TRIPPLICATE.

∞

| Place | Date | Hour | Summary of Events and Information Reference Maps Sh.27 and 36 A 1/40,000. | Remarks and references to Appendices |
|--------------------------|----------------|------|------------------------------------------------------------------------------------------------------------------------------------------------------------------------------------------------------------------------------------------------------------------|--------------------------------------------|
| St. SYLVESTRE CAPPEL. | JULY. 21st. | | C.R.E. forward in early morning. Adjutant in office all day. Fine cool day and quiet. | Bell |
| do | 22nd. | | C.R.E. in office all day. Adjutant to Company Horse Lines and to 1st. Field Company and round forward area with O.C. Quiet day. Weather fine and warm. | Bell |
| do | 23rd. | | C.R.E. to forward area per bicycle. Adjutant to three Company Horse Lines with D.A.Q.M.G. and D.A.D.V.S. Everything satisfactory. Very wet day. | Bell |
| do | 24th. | | C.R.E. in office all day, except to D.H.Q. in afternoon. Fine cool day. Quiet. | Bell |
| do | 25th. | | C.R.E. to forward area on horseback. Adjutant to Forward Field Companies. Fine day and quiet. | Bell |
| do | 26th. | | C.R.E. to Forward Field Companies and Pioneer Bn. arranging for digging of new front line. Adjutant to rear H.Q. for pay. Wet day. | Bell |
| do | 27th. | | C.R.E. and Adjutant in office during day. C.R.E. to Conference at D.H.Q. in afternoon. Weather showery. | Bell |
| do | 28th. | | C.R.E. to Company Horselines in morning. Adjutant to Dump and forward Field Companies in afternoon. Fine day and quiet. | Bell |
| do | 29th. | | C.R.E. left early to look round forward trenches. Fine day. Normal. | Bell |
| do | 30th. | | C.R.E. in office and to Division in afternoon. Adjutant to horse lines and dumps. Successful operation by 10th. Bn. capturing MERRIS. Enemy shelling STRAZEELE, COURTE CROIX and forward area during day. Fine and warm. Warning received of relief of Division. | Bell |
| do | 31st. | | C.R.E. and Adjutant in office all day preparing handing over reports etc. Lt. COL MACAULEY C.R.E. 29th. Division called re taking over. Warm day and quiet. | Bell |
| Bellowsley Capt. & Adjt. | | | | 3 |

WAR DIARY

OF

HEADQUARTERS, 1st. AUSTRALIAN DIVISIONAL ENGINEERS.

FOR

J U L Y

1918.

LIST OF APPENDICES.

| No. | Subject. |
|------|-------------------------------------------------------------------------------------|
| I | GRAPH SHOWING STRENGTHS. |
| II | STATEMENT of CASUALTIES, REINFORCEMENTS received xxx etc. |
| III | WEEKLY EMPLOYMENT & LOCATION REPORTS for W.E. 6/7/18. 13/7/18. 21/7/18. 28/7/18. |
| IV | MAP SHOWING DEFENCE WORKS 31/7/18. |
| V | PRINT of Office Map in use in STRAZEELE Sector since 15th. April 1918. |
| VI | SYNOPSIS of OPERATIONS JULY 1918. |
| VII | HANDING OVER REPORT to C.R.E. 29th. Division. |
| VIII | PROGRESS TRACING July 1918. |
| IX | PROGRESS TRACING period ending 17/5/18. |

1ST AUSTRALIAN DIVISION ENGINEERS

GRAPH Showing Strength Particulars E^{ts} of Field Companies

1ST Field Coy= GREEN, 2ND Field Coy= RED 3RD Field Coy= BLUE

MONTH OF JULY 1918

Day of Month

1 2 3 4 5 6 7 8 9 10 11 12 13 14 15 16 17 18 19 20 21 22 23 24 25 26 27 28 29 30 31

DAILY
STRENGTH
O. R.

250

240

230

220

210

200

190

180

170

DAILY
STRENGTH
DISMOUNTED
BRANCH
O. R.

160

150

ACTUALLY
PRESENT
WITH UNIT
DISMOUNTED
BRANCH
O. R.

140

130

120

110

APPENDIX /

18

9

18 — 1ST AUSTRALIAN DIVISION ENGINEERS — 6

GRAPH Showing Strength Particulars of Field Companies

1ST Field Coy = GREEN 2ND Field Coy = RED 3RD Field Coy = BLUE

MONTH OF JULY 1918

Day of Month

1 2 3 4 5 6 7 8 9 10 11 12 13 14 15 16 17 18 19 20 21 22 23 24 25 26 27 28 29 30 31

DAILY
STRENGTH
MOUNTED
BRANCH
(Firm Line)
ACTUALLY
PRESENT
WITH UNIT
MOUNTED
BRANCH
(Dotted Line)

80
70
60
50
40

ABSENT
ON DUTY
O.R.
(Firm Line)
ABSENT
ON LEAVE
O.R.
(Dotted Line)

50
40
30
20
10
0

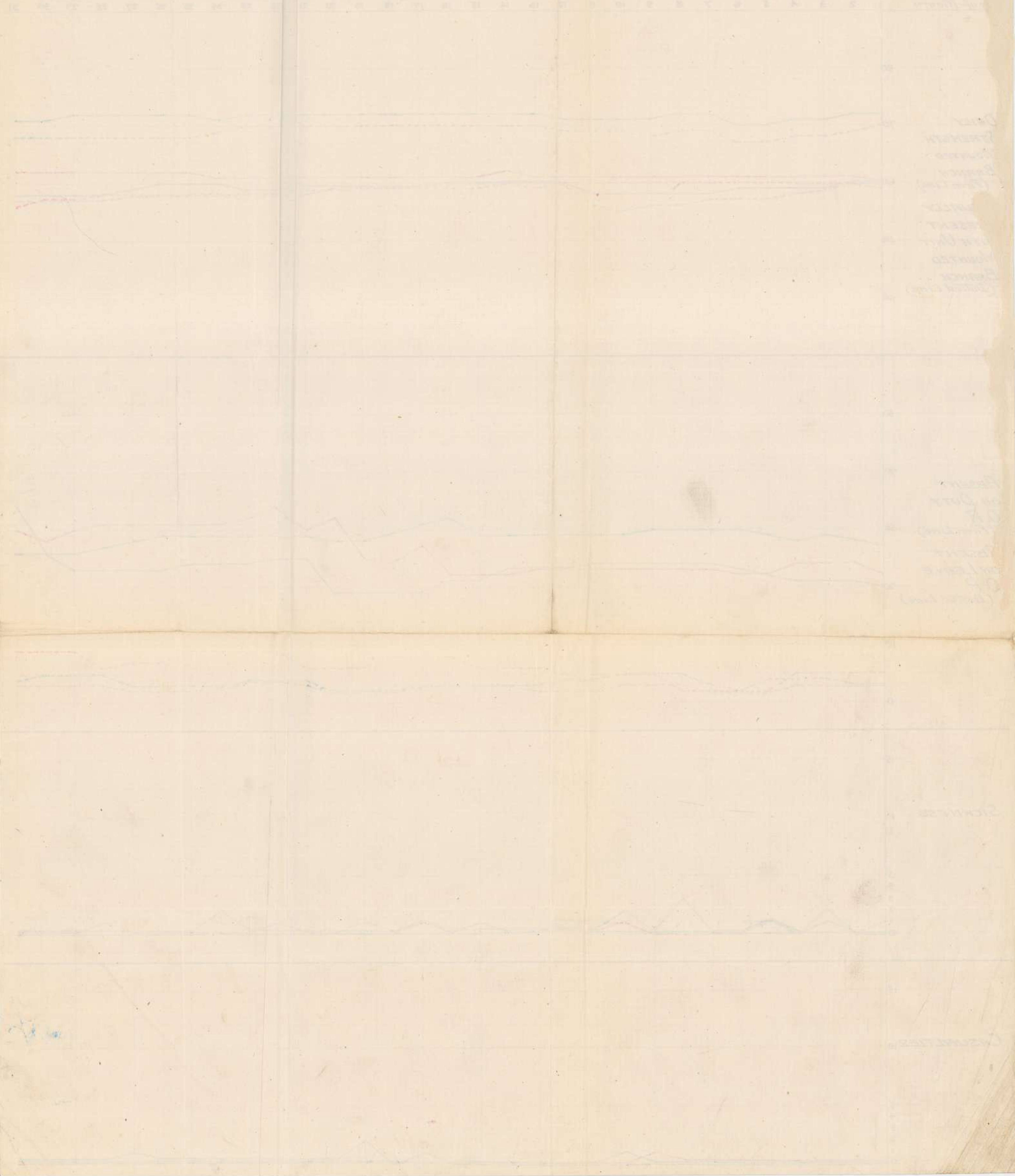
SICKNESS

15
10
5
4
3
2
1
0

CASUALTIES

15
10
5
4
3
2
1
0

1st Australian Division
General Situation
1st July 1918



1ST AUSTRALIAN DIVISION ENGINEERS

GRAPH Showing Strength Particulars ETC of Field Companies

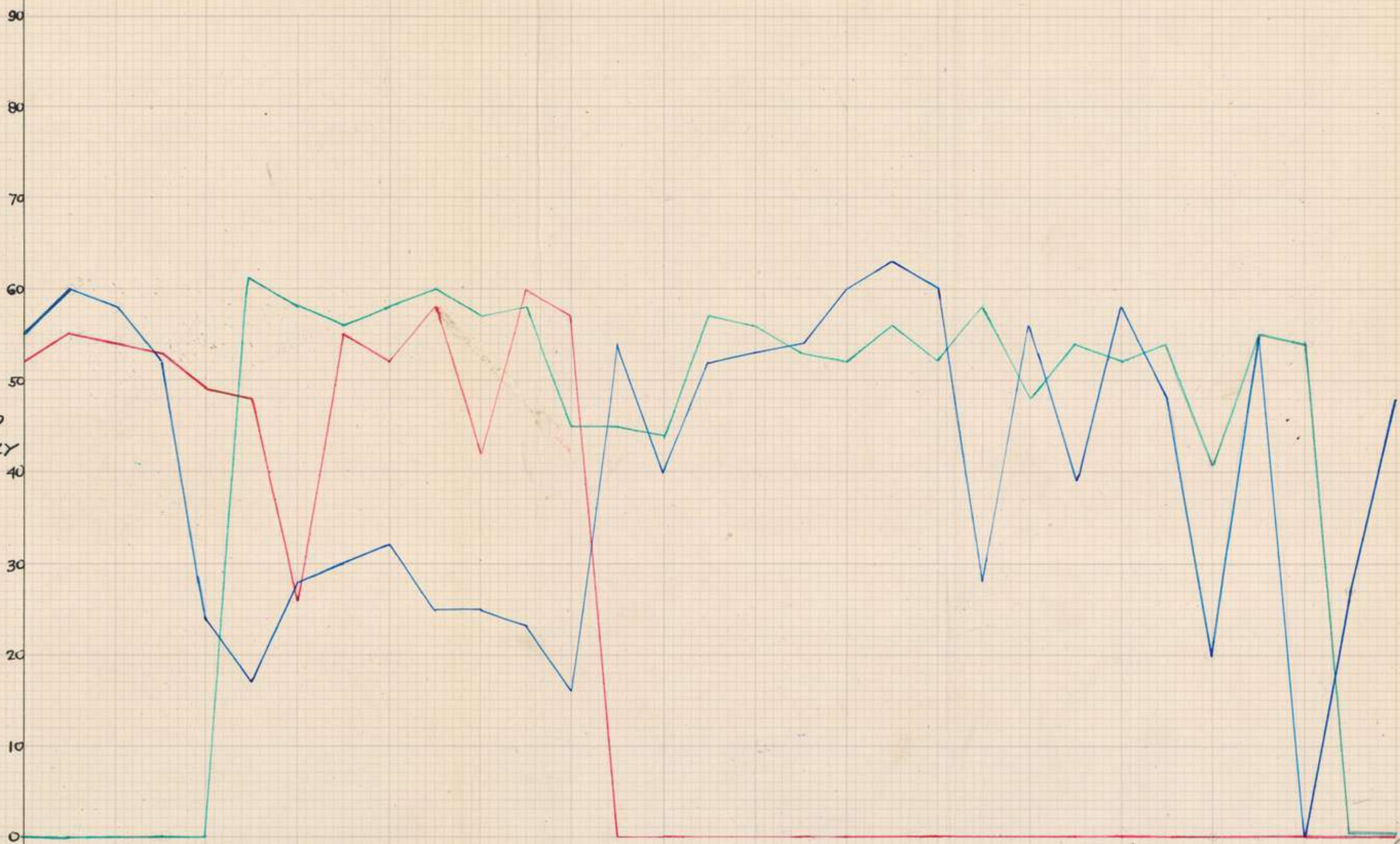
1ST Field Coy = GREEN, 2ND Field Coy = RED, 3RD Field Coy = BLUE

MONTH OF JULY 1918

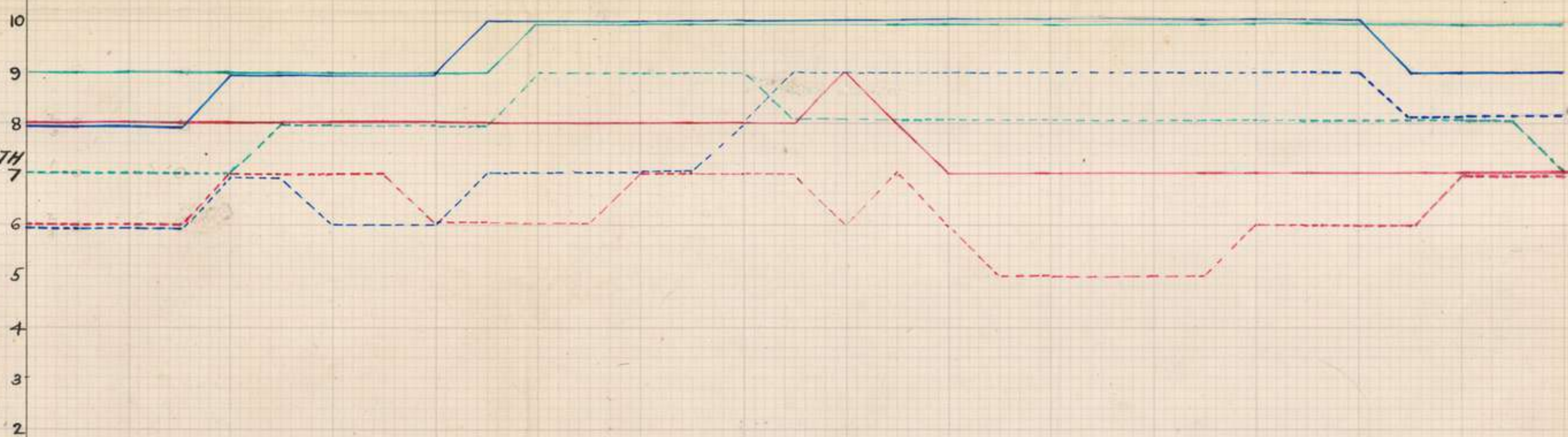
Day of Month

1 2 3 4 5 6 7 8 9 10 11 12 13 14 15 16 17 18 19 20 21 22 23 24 25 26 27 28 29 30 31

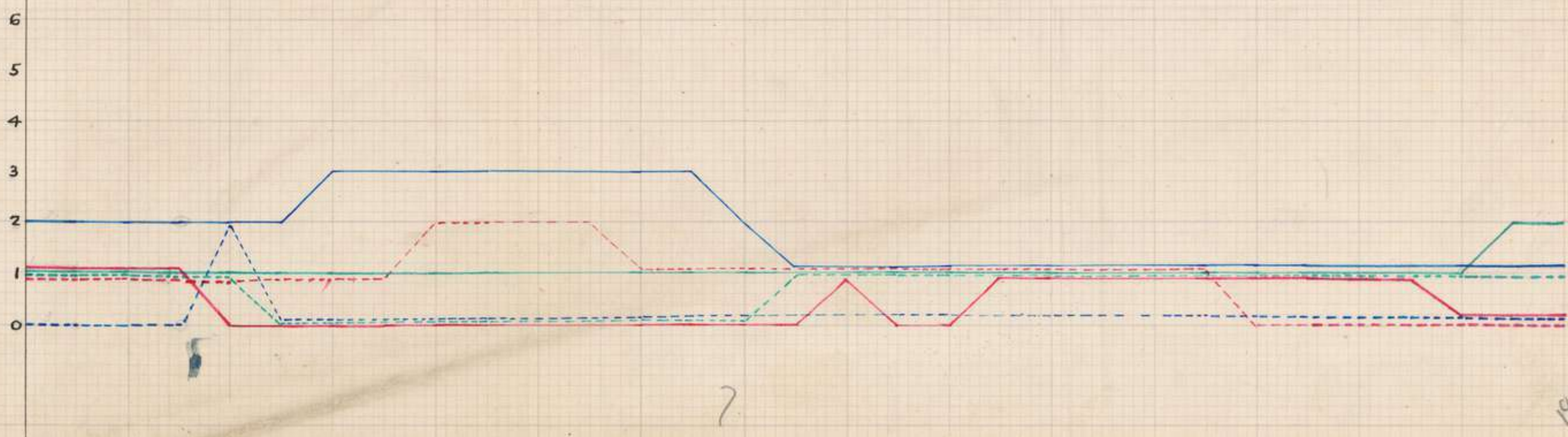
PERCENTAGE
OF MEN
EMPLOYED
ON DEFENSE
WORKS TO
DISMOUNTED
MEN ACTUALLY
WITH UNIT



OFFICERS
DAILY STRENGTH
(Firm Line)
PRESENT
WITH UNIT
(Dotted Line)



OFFICERS
ABSENT
ON DUTY
(Firm Line)
ABSENT
ON LEAVE
(Dotted Line)

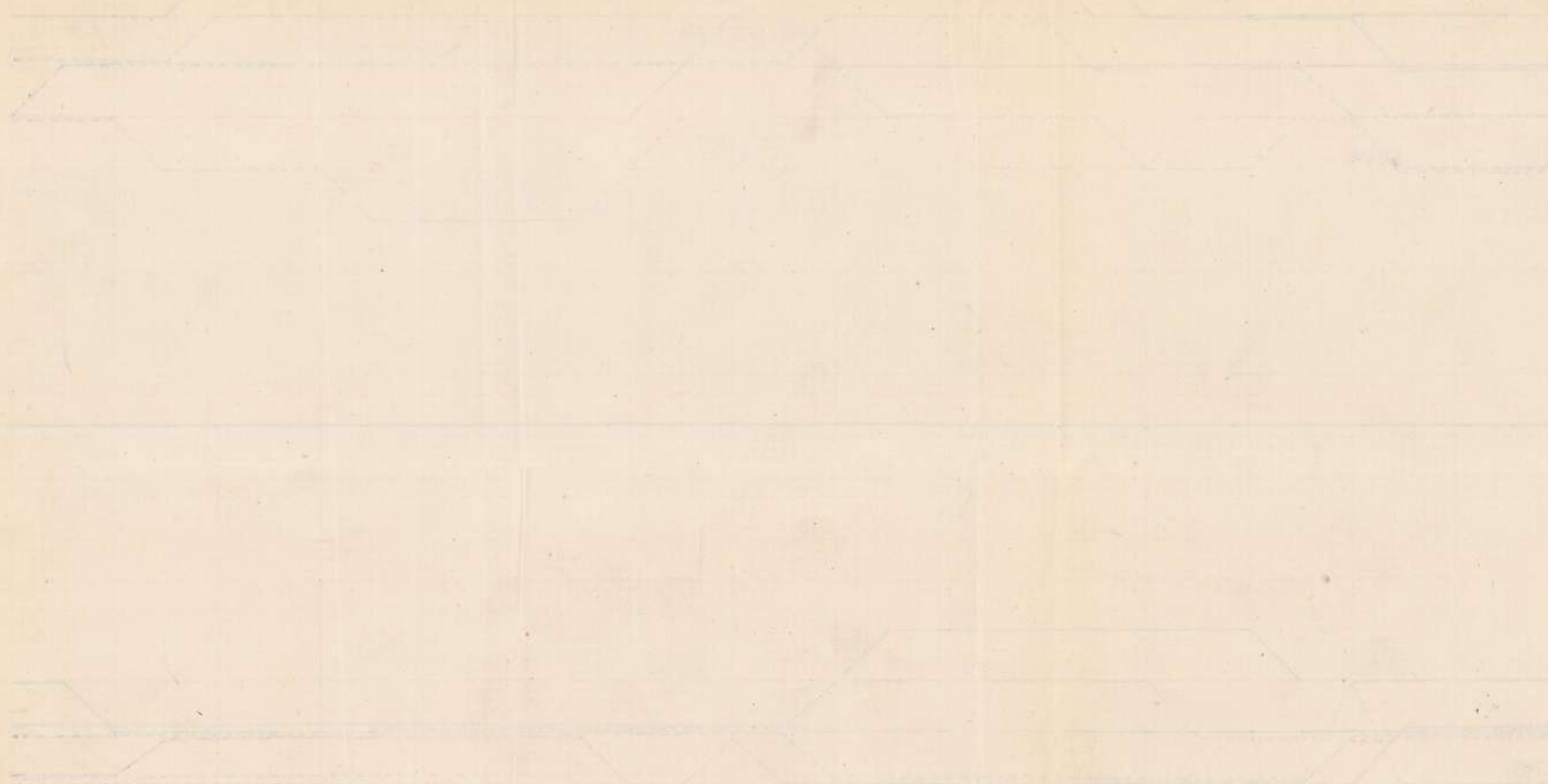


Appendix I

APPENDIX

7

18



MONTHLY STATEMENT OF CASUALTIES, EVACUATIONS, REINFORCEMENTS ETC.
for Month of JULY, 1918.

H.Q., Divisional Engineers,
1st. Australian Division,
1st. August, 1918.

Appendix II

| U n i t. | Casualties. | | | | Evacuated sick. | | Rejd. from Hospital. | | Reinforcements joined. | | Transfers. | | | | Remarks. |
|----------------|------------------------|------|----------|------|-----------------|------|----------------------|------|------------------------|------|------------|------|--------|------|------------------------------------------------------------------------------------------|
| | Kld. & died of wounds. | | Wounded. | | Off. | O.R. | Off. | O.R. | Off. | O.R. | Plus. | | Minus. | | |
| | Off. | O.R. | Off. | O.R. | | | | | | | Off. | O.R. | Off. | O.R. | |
| 1st.D.E.H.Q. | - | - | - | - | - | - | - | 1 | - | - | - | - | - | - | - |
| 1st.Field Coy. | - | 1 | - | - | - | 3 | - | 13 | 1 | - | - | - | - | 3 | 1 O.R. to Eng. Cadet School. 1 O.R. to A/ia t'port duty. 1 O.R. to Engr. Tng. Dpt. |
| 2nd.Field Coy. | - | - | - | 1 | 1 | 6 | - | 10 | - | 1 | 1 | 2 | - | 1 | |
| 3rd.Field Coy. | - | 1 | - | 3 | - | 12 | - | 11 | 1 | 1 | 1 | - | - | 1 | |
| T o t a l. | - | 2 | - | 4 | 1 | 21 | - | 35 | 2 | 2 | 2 | 2 | - | 5 | |

STATEMENT OF CHANGES IN OFFICERS:-

1st. Field Coy. A.E.:-

2/Lieut. MOFFITT, F.G. Taken on Strength from Cadet School 11/7/1918.

2nd. Field Coy. A.E.:-

T/Capt. DAVIDSON, F.S. From 1st. Aust. Army Troops Coy. 15/7/18. Transfer to date from 8/7/1918.

Lieut. HESELTINE, H.F. To Hospital sick 16/7/1918.

3rd. Field Coy. A.E.:-

2/Lieut. BLEECHMORE, L.C. Joined from Base on 4/7/1918 ex Cadet School. (1st. appointment 27/4/1918).

Capt. CARRICK, R.S. Joined from 4th. Div. Engineers, 12/7/1918.

W. A. Henderson

Lieut. Colonel,
C.R.E., 1st. Australian Division.

APPENDIX II

WEEKLY EMPLOYMENT AND LOCATION REPORT.

1st.AUSTRALIAN DIVISION.

6th. July, 1918.

Location of C.R.E. St.Sylvestre Cappel. Sh.27/ and 36A. P.28.b.7.4. STRAZEELE SECTOR.

| U n i t. | Strength. | | Map Location. | Remarks showing employment etc. |
|------------------------------|-----------|------|------------------|---------------------------------------------------------------------------------------------------------------------------------------------------------------------------------------------------------------------------------------------------------------------------------------------------------------------------------------------------------------------------------------------------------------------------------------------------------------------------------------------------------------------------------------------------------------------------------------------------------------------------------------------------------------------------------------------------------------------------------------------------------------------------------------------------------------|
| | Off. | O.R. | | |
| 1st.Field Coy. Engineers. | 8 | 199 | W.19.d.0.8. | <p><u>SUPPORT LINE.</u> 20 yards parapet levelled and revetted. 200 sandbags filled and laid. 42 pickets wired back. 8 yards trench repaired.</p> <p><u>DUGOUTS.</u> Dugouts being constructed at W.25.a.4.8. for Bde.H.Q., W.19.c.8.8. for A.D.S. and at W.27.b.9.4. for Y.M.C.A. Constructing Bn. H.Q. at E.5.b.8.3. and R.A.P. at W.19.c.4.4.</p> <p><u>DECAUVILLE RAILWAY at U.6.d.</u> Formation completed to the commencement of Dump. 100 sleepers and 10 lengths of Decauville laid in position. Heavy rails fixed for road crossing. Bridge completed with exception of timber deck. Additions and improvements made to F.P.Compound EBBLINGHEM and to Reinforcement Camp at EBBLINGHEM.</p> |
| 2nd.Field Coy. Engineers. | 7 | 203 | W.13.b.5.5. | <p><u>SUPPORT.</u> 771 yards trench widened and deepened. 57 yards revettment. 40 dugouts erected. 10 " saps excavated. 615 yards D.A.Fence erected. 5 knife rests made. Repairing roads. Burster Course on R.A.P. Erecting dugout for Bat.H.Q. Making dugout frames. Transporting R.E. Material and guides for transport. Cutting crops and thinning hedges. Cutting Stakes. Making spirals. Putting in concertinas and knife rests on roads. 4 completed. Repairing and widening trench, 50 yards.</p> <p><u>COURTE CROIX SWITCH.</u> 37 dugouts completed. 8 saps for dugouts dug. Cutting crops.</p> <p><u>RESERVE LINE.</u> 27 dugouts erected. Cutting crops. 167 yards trench dug. 56 yards revetted. 36 yards of trench widened.</p> |

WEEKLY EMPLOYMENT AND LOCATION REPORT.

(Page 2)

| U n i t. | Strength. Off. | O.R. | Map Location. | Remarks showing employment etc. |
|-------------------------------|-------------------|------|------------------|--------------------------------------------------------------------------------------------------------------------------------------------------------------------------------------------------------------------------------------------------------------------------------------------------------------------------------------------------------------------------------------------------------------------------------------------------------------------------------------------------------------------------------------------------------------------------------------------------------------------------------------------------------------------------------------------------------------------------------------------------------------------------------------------------------------------------------------------------------------|
| 2nd. Field Coy. Engineers. | (continued) | | | <p><u>"B" LINE.</u> 28 dugouts erected. Cutting crops. 134 yards trench dug. 54 yards wired back. 291 yards trench revetted. 101 tie wires placed. 3 artillery gaps cut and completed. Sleeper bridge constructed over trench. 206 yards trench improved. 2 Artillery gaps & Bridge completed.</p> <p><u>"C" LINE.</u> 15 dugouts completed. 30 feet trench dug. 152 yards revetted. 95 yards trench deepened. 298 yards trench improved. 520 yards double apron fence erected.</p> <p><u>"D" LINE.</u> 29 dugouts erected. 30 yards trench deepened and revetted.</p> <p>Supervising mines. Erecting Bde.H.Q. & alternative Bde.H.Q. Salving material.</p> |
| 3rd. Field Coy. Engineers. | 7 | 181 | W.19.d.0.8. | <p><u>SUPPORT LINE.</u> 627 yards of trench improved. 338 yards trench revetted. 16 knife rests made. 26 bundles of Barbed concertina wire made. 146 yards of trench excavated. 29 shelters constructed.</p> <p><u>MERRIS STREET C.T.</u> 1,375 yards of trench improved. Constructing dugouts for R.A.P.'s at W.29.c.4.3. Strengthening cellar and fitting gas Curtains for R.A.P. at E.4.d.4.0. Making dressing station shell proof, improving same, A.D.S. BORRE W.19.c.8.5. Improving shelters and erecting bath-house B.H.Q. at W.25.a.4.8. Constructing large dugouts for Coy. H.Q. at W.26.b.8.1. and E.5.b.7.4. Strengthening and improving dugout for Coy. H.Q. at E.4.c.8.8. Constructing dugout for Y.M.C.A. at W.27.b.8.5.</p> <p><u>RESERVE AREA.</u> Constructing decauville embankment.</p> |

APPENDIX II

10

WEEKLY EMPLOYMENT AND LOCATION REPORT.

(Page 3)

| U n i t. | Strength. | | Map Location. | Remarks showing employment &c. |
|---------------------------|-----------|------|------------------|---------------------------------------------------------------------------------------------------------------------------------------------------------------------------------------------------------------------------------------------------------------------------------------------------------------------------------------------------------------------------------------------------------------------------------------------------------------------------------------------------------------------------------------------------------------------------------------------------------------------------------------------------------------------------------------------------------------------------------------------------------------------------------------------------------------------------------------------------------------------------------------------------------------------------------------------------------------------------------------------------------------------------------------------------------------------------------------------------------------------------------------------------|
| | Off. | O.R. | | |
| 1st.Pioneer Battalion. | 18 | 763 | W.12.b.9.9. | <p><u>SUPPORT LINE.</u> 2,035 yards trench widened and improved. 298 yards drain cut. 160 yards trench firestepped. 370 yards of trench revetted and duckboarded. 400 yards of parapet sandbagged. 56 shelters completed. 160 yards of trench excavated. 4 knife rests completed.</p> <p><u>CONCRETE M.G. POSITIONS.</u> Concrete M.G. Positions at W.27.a.5.4., 55 tons of concrete thrown. " " " " E. 3.b.3.6. 50 " " " " " " " " W.26.d.2.6. 53 " " " "</p> <p><u>SUPPORT</u> <u>PRADELLES DEFENCES.</u> Preparing site for pillbox at E.4.b.9.9.</p> <p><u>HAZEBROUCK</u> <u>STRAZELLE DEFENCES.</u> Preparing site for pillbox at V.28.b.3.4.</p> <p><u>RESERVE LINE.</u> Preparing site for pillbox at E.3.9.7..</p> <p><u>ROUGE CROIX DEFENCES.</u> 336 yards D.A. fence erected. 5,000 square yards of crops cut. 206 yards trench excavated. 2 knife rests completed.</p> <p><u>PRADELLES & BORRE DEFENCES.</u> 72 bunks erected in deep dugouts. 9,000 square yards of crops cut. 6 knife rests completed.</p> <p><u>"C" LINE.</u> 150 yards of hedge thinned.</p> |

W A Henderson

Lieut. Colonel,
C.R.E., 1st. Australian Division.

APPENDIX
1/11

WEEKLY EMPLOYMENT AND LOCATION REPORT.

1st. AUSTRALIAN DIVISION.

13th. July 1918.

Location of C.R.E. St. SYLVESTRE CAPPEL. Sheet 27/P.28.b.7.4. and 36A. STRAZEELE SECTOR.

| Unit. | Strength. Off. | O.R. | Map Location. | Remarks showing employment etc. | |
|----------------------------|-------------------|------|------------------|---------------------------------------------------------------------------------------------------------------------------------------------------------------------------------------------------------------------------------------------------------------------------------------------------------------------------------------------------------------------------------------------------------------------------------------------------------------------------------------------------------------------------------------------------------------------------------------------------------------------------------------------------------------------------------------------------------------------------------------------------------------------------------------------------------------------------------------------------------------------------------------------------------------------------------------------------------------------------------------------------------------------------------------------------------------------------------------------------------------------------------|---------------------------------------------------------------------------------------------------------------------------------------------------------------------------------------------------------------------------------------------|
| 1st. Field Coy. Engineers. | 9 | 206 | W.19.d.0.8. | <u>Front Line.</u> 350 yards D.A.Fence erected. 1030 yards French Wiring. 210 yards Trench Improved. <u>Support Line.</u> 420 yards D.A.Fence erected. 200 yards Wiring repaired. 72 yards trench revetted. 11 excavations for shelters. <u>Strazeele Station Defences.</u> 565 yards trench excavated. 100 yards revetting 50% complete. <u>Borre Switch.</u> 255 yards parados built up. <u>Accommodation.</u> E.6.b.1.1. Consolidating Coy. H.Q. E.5.b.8.3. do. Bn. H.Q. E.3.c.08.75. Strengthg. Bn.H.Q.Walls. E.4.c. 25.88. New Bn. H.Q.strengthened. W.19.c.8.8. A.D.S.walls sandbagged. V.24.c.7.4. 6Shelters completed, 2 in progress. V.24.d.5.7. 9 Shelters excavated, 5 completed. W.26.b.8.1. Coy. H.Q. being protected. W.27.a.5.0. 2Dugouts completed and gasproofed. Additional work salvaging R.E. Material from STRAZEELE, guarding and inspecting mines and sinking new shafts at V.30.90.45. (Bridge) V.29.b.6.3., V.30.a.1.7., D.6.c.9.1., and V.29.4.5. Road mine No. 13 being filled in and new one being excavated at W.29.a.4.6. | 50 yards S.A.Fence erected. 30 yards Trench excavated. 70 yards Wire repaired. 30 yards S.A.Fence erected. 686 yards trench improved. 120 yards trench excavated. 150 yards trench revetted. 46 yards trench revetted. |
| 2nd. Field Coy. Engineers. | 7 | 202 | U.18.b.2.2. | <u>Support Line.</u> 141 yards trench revetted. | 377 yards trench improved. |

APPENDIX

WEEKLY EMPLOYMENT AND LOCATION REPORT.

Sheet 2.

| Unit. | Strength. Off. | O.R. | Map Location. | Remarks showing employment etc. |
|---------------------------------------------|-------------------|------|------------------|-------------------------------------------------------------------------------------------------------------------------------------------------------------------------------------------------------------------------------------------------------------------------------------------------------------------------------------------------------------------------------------------------------------------------------------------------------------------------------------------------------------------------------------------------------------------------------------------------------------------------------------------------------------------------------------------------------------------------------------------------------------------------------------------------------------------------------------------------------------------------------------------------------------------------------------------------------------------------------------------------------------------------------------------------------------------------------------------------------------------------------------------------------------------------------------------------------------------------------------------------------------------------------------------------------------------------------------------------------------------------------------------------------------------------------------------------|
| 2nd Field Coy. Engineers. (continued) | | | | <p>Support Line.</p> <p>130 yards drain cut. 495 yards D.A. fence erected.</p> <p>200 yards crop cut. 49 shelters completed.</p> <p>22 yards trench excavation. 14 knife rests made.</p> <p>Gasproofing and improving R.A.P.</p> <p>Making concertinas and placing same.</p> <p>Strengthening Bn. H.Q.</p> <p>Courte Croix Switch.</p> <p>44 yards trench excavation. 670 yards crops cut.</p> <p>27 shelters completed. 7 Shelters 50 % complete.</p> <p>Reserve Line.</p> <p>105 yards trench excavated. 88 yards trench improved.</p> <p>515 yards crops cut. 40 yards drain cut.</p> <p>M.G. Emplacement & Ammn. dogout made.</p> <p>"B" Line</p> <p>177 yards trench revetted. 3 Firesteps made.</p> <p>67 yards parapet sandbagged. 175 yards trench deepened.</p> <p>44 yards drain cut. 2 Shelters completed.</p> <p>44 yards trench excavated.</p> <p>"C" Line.</p> <p>158 yards trench revetted. 72 yards Breastwork.</p> <p>30 yards trench widened.</p> <p>"D" Line.</p> <p>103 yards trench revetted. 30 yards trench widened.</p> <p>15 yardstrench Sandbagged.</p> <p>In addition: Knife Rests placed. Gap signs erected. Repairs to Wire.</p> <p>Supervision of Mines. Salvage. Strengthening Cellars.</p> <p>Loading carting and unloading material.</p> <p>Company in Reserve, two Sections received training in the morning while the afternoons were devoted to Recreation. Work of other two Sections as follows :</p> |
| 3rd. Field Coy. Engineers. | 7 | 188 | W.13.b.5.5. | |

APPENDIX

WEEKLY EMPLOYMENT AND LOCATION REPORT.
Sheet 3.

| Unit. | Strength Off. | O.R. | Map Location. | Remarks showing employment etc. |
|----------------------------------|------------------|-------------|------------------|-------------------------------------------------------------------------------------------------------------------------------------------------------------------------------------------------------------------------------------------------------------------------------------------------------------------------------------------------------------------------------------------------------------------------------------------------------------------------------------------------------------------------------------------------------------------------------------------------------------------------------------------------------------------------------------------------------------------------------------------------------------------------------------------------------------------------------------------------------------------------------------------------------------------------------------------------------------------------------------------------------------------------------------------------------------------------------------|
| 3rd. Field Coy. Engineers. | | (Continued) | | <p>Constn. Decauville Track -1st. D.A.C. Dump at U.6.d.(Sheet27) Laid 189 yards Track, Ballasted 220 yards Track, Built 178 yards embankment. Level crossing constructed. Forming Roadway for 3rd. Field Ambulance at V.9-b.1.5. 150 yards Spitlocked. Laid 10 yards with fascines. 96 Wagon Loads Bricks. Bricks carted from CAESTRE. F.P. Compound EBBLINGHEM. T.24.d.8.9. Pulled down and reerected 140 yards Wire Fence and strengthened remainder. Constructed Sentry Box. Reinforcement Camp at V.19.c.3.7. Constructed 2 Meat Safes. Erected 2 Latrine Shelters. Dug Ablution Drain.</p> |
| 1st. Pioneer Battalion. | 19 | 721 | V.12.b.9.9. | <p><u>Support Line.</u> 1170 yards Trench improved. 410 yards trench revetted. 152 yards trench duckwalked. 250 yards firestep constructed. 240 yards drain cut. 100 yards trench deepened for drainage. 15 Shelters completed. 306 yards trench revetted. 40 yards prepared for anchorages. 725 yards parapet levelled. Merris St. C.T. excavated for de. 40 channels excavated for anchorages. <u>Merris St. C.T.</u> 195 yards trench improved. 80 yards drain cut. 20 yards drain deepened. <u>Concrete M.G. Positions.</u> W.27.a.5.4. 10 tons concrete thrown. Position completed 9/7/18. E.3.b.3.6. 41 tons concrete thrown. Position completed 10/7/18. W.26.d.2.6. 51 tons concrete thrown. Position completed 10/7/18. E.4.b.9.9. Site for Pill Box prepared. E.3.c.0.7. Preparing Site for Pill Box. <u>Water Supply.</u> Salvaged Timber for Forms and piping for Water Supply. Road repaired to pumping Station. Installing Water Service. <u>Rouge Croix Defences.</u></p> |

18

APPENDIX

14

WEEKLY EMPLOYMENT AND LOCATION REPORT.
Sheet 4.

| Unit. | Strength. Off. O.R. | Map Location. | Remarks showing employment etc. |
|----------------------------|------------------------|-------------------------------------------------------------------------------------------------------------------------------------------------------------------------------------------------------------------------------------------------------------------------------------------------------------------------------------------------------------------------------------------------------------------------------------------------------------------------------------------------------------|-------------------------------------------------------------------------------------------------------------------------------------------------------------------------------------------------------------------|
| 1st. Pioneer Battalion. | (Continued.) | <u>Rouge Croix Defences.</u> 60 yards trench dug. Outer circle completed. Wiring gaps etc. <u>Courte Croix Defences.</u> 150 yards trench excavated. 5/15' Knife Rests completed. 50 yards trench repaired. <u>Borre & Pradelles Defences.</u> Deep dugouts pumped out daily. 18 Knife Rests constructed. 260 yards S.A.fence erected. <u>Strazeele Defences.</u> 647 yards trench improved. 468 yards trench firestepped. 3 Excavations for shelters completed. | 75 yards drain cut. 140 yards D.A.fence erected. 8 Gas Proof Doors for Dugouts. 1220 yards D.A.fance erected. 270 yards trench revetted. 380 yards parapet levelled. 65 yards trench excavated. |

In addition:-

Dump Guard at CAESTRE SIDI NG. Forest party Martyn Dump.
Construction and improvement of Artillery Dugouts.
Concrete ~~xx~~ loading and unloading parties.
Bagging 2030 bags metal and 900 bags sand.

W.A. Henderson

Lieut. Colonel.
C.R.E.1st.Australian Division.

18

ATTACHED

15

WEEKLY EMPLOYMENT AND LOCATION REPORT.

1st.AUSTRALIAN DIVISION.

21st. July, 1918.

Location of C.R.E. St.SYLVESTRE CAPPEL. Sheet 27 and 36A. P.28.b.7.4. STRAZEELE SECTOR.

| U n i t. | Strength. Off. | O.R. | Map Location. | Remarks showing employment etc. |
|----------------------------|-------------------|------|------------------|-----------------------------------------------------------------------------------------------------------------------------------------------------------------------------------------------------------------------------------------------------------------------------------------------------------------------------------------------------------------------------------------------------------------------------------------------------------------------------------------------------------------------------------------------------------------------------------------------------------------------------------------------------------------------------------------------------------------------------------------------------------------------------------------------------------------------------------------------------------------------------------------------------------------------------------------------------------------------------------------------------------------------------------------------------------------------------------------------------------------------------------------------------------------------------------------------------------------------------------------------------------------------------------------------------------------------------------------------------------------------------------------------------------------------------------------------------------------------------------------------------------------------------------------------------------------------------------|
| 1st.Fld.Coy. Engineers. | 8 . | 205 | W.19.d.0.8. | <p><u>Front Line.</u> 331 yards of trench widened & deepened. 600 yards of D.A.Fence erected. 436 yards S.A.Fence erected. 286 yards of breastwork completed. 20 yards of trench excavated. 200 yards entanglements repaired. <u>SUPPORT Line.</u> laid. 1268 yards trench widened & deepened. 234 yards trench revetted & d'walks/ <u>RESERVE Line.</u> 168 yards C.T. excavated. 32 excavations completed for shelter 15 shelters completed. <u>"B" Line, 2nd. Zone.</u> 1000 yards trench widened for revetment. 100 yards revetment 50% completed. 134 yards trench revetted with 'A' frames. 84 yards C.T. excavated. <u>"C" Line, 2nd. Zone.</u> 14 shelters completed. 35 yards of trench revetted. <u>"D" Line, 2nd. Zone.</u> 120 yards trench revetted with 'A' frames. Filled behind 48 yards 'A' Panels. <u>ACCOMMODATION.</u> E.4.c.25.86 Strengthening New Bn.H.Q. E.3.c.08.75 Laid Bursters Course Bn. H.Q. W.29.c.4.1. R.A.P. consolidated. W.25.a.4.0. Dugout completed for Bde. H.Q. W.19.c.8.8. Strengthening A.D.S. BORRE. V.24.d.5.7. Bn. H.Q. Excavated and completed 8 Cupola Dugouts. 5 dugouts partially completed. 45 yards trench excavated. V.24.c.5.2. Strengthening Coy. H.Q. V.24.d.5.7. Improving Dugout for Y.M.C.A. W.27.a.5.0. Protection of Coy. H.Q. W.26.b.8.1. Building Signal Dugout.</p> <p>Additional Work salving from STRAZEELE DUMP and guarding, inspecting and renovating mines.</p> |

APPENDIX

| U n i t. | Strength. Off. | O.R. | Map Location. | Remarks showing employment etc. |
|----------------------------|-------------------|------|------------------|-----------------------------------------------------------------------------------------------------------------------------------------------------------------------------------------------------------------------------------------------------------------------------------------------------------------------------------------------------------------------------------------------------------------------------------------------------------------------------------------------------------------------------------------------------------------------------------------------------------------------------------------------------------------------------------------------------------------------------------------------------------------------------------------------------------------------------------------------------------------------------------------------------------------------------------------------------------------------|
| 2nd.Fld.Coy. Engineers. | 5 | 195 | U.18.b.2.2. | <u>TRAINING.</u> Section and Gas drill. Practice in Revetting. Musketry & Lewis Gun practice. Inspected Concrete works and Lock at ARQUES. <u>U.6.D.</u> Making formation of and laying Decauville Tramway. <u>EBBLINGHEM.</u> Improvements to Div.Reinforcement Camp. Making road at 3rd.Field Ambulance. |
| 3rd.Fld.Coy. Engineers. | 9 | 192 | W.13.b.5.5. | <u>SUPPORT LINE.</u> from E.5.a. 737 yards of trench enlarged for revetment. 150 yards parapet improved. 18 yards drain revetted. <u>NORD STREET - W.29.b.</u> 200 yards of trench enlarged for revetment. 16 excavations for shelters. 1 shelter completed. <u>ROUGE CROIX SWITCH.</u> 27 shelters constructed. 74 yards excavations for shelters. <u>COURTE CROIX SWITCH.</u> 235 yards trench excavated for shelters. 51 shelters constructed. Additional work:- Constructed and camouflaged R.A.P. at X.19.a.4.8. Improving R.A.P. at W.24.c.95.60. Constructing R.A.P. at W.16.d.8.3. Constructing Bn.H.Q. at W.22.d.9.8. " " " 2 dugouts 18' x 6' " " " 1 dugout 18' x 6', W.8.c.1.3. Water point constructed at V.18.b.2.8. Imp. Bde.H.Q. at W.8.a.8.0. <u>WORK DONE BY BDE.MINING COY.UNDER OUR INSTRUCTION.</u> 1150 yards D.A.Fence erected. 40 yards trench revetted. 20 yards parapet revetted. |
| 1st.Pioneer Battalion. | 15 | 589 | V.12.b.9.9. | <u>SUPPORT LINE.</u> 470 yards trench revetted. 390 yards revetment wired back. 470 yards trench improved. 510 yards parapet & parados sandbagged. 88 c.yards excavation for trench shelters. 180 yds.firestep erected. 535 yards parapet levelled. 65 yds.duckboards laid. 195 yds. parapet prepared for anchorage. 2 M.G.emplacements completed. |

APPENDIX

| Unit. | Strength. Off. O.R. | Map Location. | Remarks showing employment etc. |
|------------------------|------------------------|--------------------------------------------------------------------------------------------------------------------------------------------------------------|---------------------------------|
| 1st.Pn.Bn.(continued.) | | <u>TIFLIS STREET.</u> | |
| | | 12 yards duckwalks laid. | 200 yds.trench improved. |
| | | 110 yards of trench sandbagged. | 115 yds.trench firestepped. |
| | | 80 yds.parapet levelled. | 70 yds.trench revetted. |
| | | <u>ROUGE CROIX DEFENCES.</u> | |
| | | Wiring road in front of ROUGE CROIX. Constructing Knife rests. Maintaining defences. 10 knife rests constructed. Hedges thinned. 110 yds. D.A.Fence erected. | |
| | | <u>STRAZEELE DEFENCES.</u> | |
| | | 190 yds.trench firestepped. | 50 yds.parapet sandbagged. |
| | | 50 yds.parapet levelled. | 40 yds.trench improved. |
| | | 25 yds.drain cut. | |
| | | <u>MERRIS STREET C.T.</u> | |
| | | 160 yds.trench improved. | 42 yds.drain cut. |
| | | 42 yds.duckwalks laid. | 1 sump excavated. |
| | | <u>CONSTRUCTION OF PILL BOX.-E.3.c.0.7.</u> | |
| | | Excavation completed. Water service completed. Forms prepared. 17 c.yards floor concreted. Platform erected for barrow runs. | |
| | | <u>E.4.b.9.9.</u> Walls in building strutted. Water service completed. Roof of shed strengthened. 8 c.yards of concrete thrown for base. Forms prepared. | |
| | | <u>CONSTRUCTION OF CONCRETE SHELTER FOR PUMPING PLANT.- V.28.b.4.4.</u> | |
| | | Site camouflaged. Excavation for Base. Forms prepared. 28c.yards concreting of base. | |
| | | <u>PRADELLES DEFENCES.</u> | |
| | | Maintaining defences. 680 yards D.A.Fence erected. | |
| | | <u>BORRE DEFENCES.</u> | |
| | | Trench cleared W.19.d.6.3. to 8.7. | |
| | | Berm " W.19.c.9.3. to d.6.4. 32 yards of trench revetted. | |
| | | <u>In addition:-</u> | |
| | | Transported to E.3.c.0.7. 50 tons metal, 26 tons sand, 24 casks cement, timber for forms, piping for water service, and iron for reinforcing. | |
| | | Transported to E.4.b.9.9. 40 tons metal, 25 tons sand, 24 casks of cement, timber for forms, piping for water service, and iron for reinforcing. | |
| | | Transporting to V.28.b.4.4. 50 tons metal, 45 tons sand, 44 casks cement, timber for forms, piping for water service, and iron for reinforcing. | |

| U n i t. | Strength. Off. | O.R. | Map Location. | Remarks showing employment etc. |
|-------------------------------|-------------------|------|------------------|-----------------------------------------------------------------------------------------------------------------------------------------------------------------------|
| ----- | | | | |
| 1st.Pn.Battalion. (continued) | | | | In addition:- |
| | | | | <u>CAESTRE SIDING.</u> Bagging 2,800 bags metal, 900 bags sand. |
| | | | | <u>MISCELLANIOUS.</u> Construction of Artillery dugouts. Salving timber and forms, iron for reinforcing and piping for Water Service, preparing iron for reinforcing. |
| | | | | <u>V.11.c.2.5.</u> Constructing building for Divisional Baths. |
| | | | | <u>W.13.d.1.3.</u> Repairs to road damaged by shell fire. |

W.A. Henderson

Lieut.Colonel,
C.R.E., 1st.Australian Division.

APPENDIX 11

WEEKLY EMPLOYMENT AND LOCATION REPORT.

1st. AUSTRALIAN DIVISION.

28th. July, 1918.

Location of C.R.E. St. SYVESTRE CAPPEL. Sheet 27 and 36A. P.28.b.7.4. STRAZEELE SECTOR.

| U n i t. | Strength. Off. | O.R. | Map Location. | Remarks shewing employment etc. |
|----------------------------|-------------------|------|------------------|---------------------------------------------------------------------------------------------------------------------------------------------------------------------------------------------------------------------------------------------------------------------------------------------------------------------------------------------------------------------------------------------------------------------------------------------------------------------------------------------------------------------------------------------------------------------------------------------------------------------------------------------------------------------------------------------------------------------------------------------------------------------------------------------------------------------------------------------------------------------------------------------------------------------------------------------------------------------------------------------------------------------------------------------------------------------------------------------------------------------------------------------------------------------------|
| 1st.Fld.Coy. Engineers. | 8 | 205 | W.19.d.0.8. | <p><u>FRONT LINE.</u> 130 yards D.A.Fence erected. 250 yds.trench exc. for shelters. 60 yds.breastwork built up. <u>SUPPORT LINE.</u> 177 yds.trench widened & deepened. <u>RESERVE LINE.</u> 219 yds.trench widened & deepened. 13 shelters completed. <u>COURTE CROIX SWITCH.</u> 5 shelters completed. 67 yds.trench excavated. <u>ROUGE CROIX SWITCH.</u> 11 shelters completed. <u>"B" LINE.</u> 100 yds. trench revetted. <u>"C" LINE.</u> 2 shelters completed. 10 shelters excavated. <u>"D" LINE.</u> 2 shelters completed. 30 yds. trench excavated. <u>ACCOMMODATION.</u> W.25.a.4.8. Bde.H.Q. 5 Gas Proof doors and 4 gas proof doors fitted. E. 4.d.4.0. R.A.P. rendered gasproof. W.26.d.4.4. R.A.P. 60% completed. W.26.b.8.1. Signal dugouts completed. <u>ADDITIONAL WORK:-</u> Salving material from STRAZEELE DUMP, guarding and renovating mines, making dugout frames, guiding transport and unloading parties. Instructing parties from 119th. Bde. in Wiring (D.Line) 270 yards D.A.Fence.</p> |

190 yards S.A.Fence erected.
40 yds.trench widened and deepened.
43 shelters excavated.
52 yds.trench revetted & duckwalked.
54 yds.trench partially excavated.
12 shelters excavated.
14 shelters excavated.
1 shelter 80% completed.
16 shelters excavated.
30 yds. parapet built.
6 shelters excavated.

APPENDIX 11

| U n i t. | Strength. Off. | O.R. | Map Location. | Remarks showing employment etc. |
|----------------------------|-------------------|------|------------------|------------------------------------------------------------------------------------------------------------------------------------------------------------------------------------------------------------------------------------------------------------------------------------------------------------------------------------------------------------------------------------------------------------------------------------------------------------------------------------------------------------------------------------------------------------------------------------------------------------------------------------------------------------------------------------------------------------------------------------------------------------------------------------------------------------------------------------------------------------------------------------------------------------------------------------------------------------------------------------------------|
| 2nd.Fld.Coy. Engineers. | 6 | 196 | U.18.b.2.2. | Construction of Decauville Tramway. Training of Company in Lewis Guns. |
| 3rd.Fld.Coy. Engineers. | 9 | 187 | W.13.b.45.35. | <p><u>NEW SUPPORT LINE.</u> 936 yds.trench dug. 800 yds.D.A.Fence erected.</p> <p><u>SUPPORT LINE.</u> 205 yds.trench improved & revetted. 400 yds.trench dug. 14 shelters erected. 2250 yds. wire erected.</p> <p><u>STRAZEELE STATION DEFENCES.</u> 34 yds.trench improved & revetted. 6 shelters erected. 155 yds. wire erected. 22 yds. trench dug.</p> <p><u>MOLEGHEIN FARM DEFENCES.</u> 140 yds.wire erected.</p> <p><u>ROUGE CROIX SWITCH.</u> 20 yds.trench dug. 4 shelters erected.</p> <p><u>COURTE CROIX SWITCH.</u> 350 yds.trench improved & revetted. 3 shelters erected.</p> <p><u>NORD STREET.</u> 54 yds.trench improved & revetted. 5 shelters erected. 118 yards trench dug.</p> <p>W.16.d.8.3. R.A.P. constructed. X.19.d.8.8. R.A.P. under construction. W.22.d.9.8. Strengthening cellar. E.5.b.7.4. Improving Bn. H.Q. X.19.a.9.9. Constructing R.A.P. W. 8.a.8.0. Improving Bde. H.Q.</p> |
| 1st.Pioneer Battalion. | 16 | 587 | V.12.b.9.9. | <p><u>NEW COMMUNICATION TRENCH. E.5.b.6.2. to E.6.c.1.2.</u> 480 yards trench excavated.</p> <p><u>COMMUNICATION TRENCH. X.19.c.4.3. to X.25.b.3.1.</u> 900 yards trench excavated.</p> <p><u>TIFLIS STREET.</u> 133 yds.trench improved. 66 yds.trench revetted, 60% completed. 105 yds.trench firestepped. 30 yds.trench duckwalked. 135 yds.parapet levelled. 107 yds.parapet sandbagged.</p> |

APPENDIX

| U n i t. | Strength. Off. O.R. | Map Location. | Remarks showing employment etc. |
|------------------------|------------------------|------------------|----------------------------------------------------------------------------------------------------------------------------------------------------------------------------------------------------------------------------------------------------------------------------------------------------------------------------------------------------------------------------------------------------------------------------------------------------------------------------------------------------------------------------------------------------------------------------------------------------------------------------------------------------------------------------------------------------------------------------------------------------------------------------------------------------------------------------------------------------------------------------------------------------------------------------------------------------------------------------------------------------------------------------------------------------------------------------------------------------------------------------------------------------------------------------------------------------------------------------------------------------------------------------------------------------------------------------------------------------------------------------------------------------------------------------------------------------------------------------------------------------------------------------------------------------------------------------------------------------------------------------------------------------------------------------------------------------------------------------------------------------------------------------------------------------------------------------------------------------------------------------------------------------------------------------------------------------------------------------------------------------------------------------------------------------------------------------------------------------------------------------------------------------------------------------------------------------------------|
| 1st.Pn.Bn. (continued) | | | <p><u>SUPPORT LINE.</u> 1 M.G.emplacement 70% completed. 186 yds.duckwalks laid. 340 yds.parados erected.18"berm constd. 292 c.yards excavation for shelters 22 shelters completed. 1 M.G.emplacement completed. 463 yds.trench improved. 431 yds.trench revetted. 10 shelters revetted with sandbags. 116 yds.trench sandbagged. 137 yds.revetment wired back. 225 yds.parapet sandbagged. 205 yds.parapet levelled. 193 yds.firestep erected.</p> <p><u>STRAZEELE DEFENCES.</u> 340 yds.trench improved. 190 yds.trench firestepped. 265 yds.parapet sandbagged.</p> <p><u>MERRIS STREET C.T.</u> 243 yds.duckwalks laid. 359 yds.trench improved. 110 yds.drain cut. 25 yds.parapet sandbagged. 40 yds.trench revetted. 3 shelters completed. (C.T's.to same 40% 35 yds.drain improved. completed)</p> <p><u>ROUGE CROIX DEFENCES.</u> 1 Platoon NUCLEUS GARRISON maintaining defences. 150 yds.D.A.Fence erected. 3 knife rests completed. 300 yds.parapet thickened & turfed.</p> <p><u>CONSTRUCTING CONCRETE O.P. X.19.c.05.80.</u> Preparing reinforcing irons. Arranging water supply. 10 tons concrete thrown.</p> <p><u>CONSTRUCTION OF PILL BOX - E.3.c.0.7.</u> Erection of forms completed. Erecting reinforcing iron. Throwing completed.</p> <p><u>CONSTRUCTION OF PILL BOX - E.4.b.9.9.</u> Construction of base completed. Erection forms completed. Throwing concrete.</p> <p><u>ACCOMMODATION.</u> 15 shelters completed. W.17.c.15.70.</p> <p><u>CONSTRUCTING CONCRETE SHELTER FOR PUMPING PLANT.- V.28.b.4.4.</u> Constructing of base completed. Pumping and extension of water service. Erecting reinforcing rods and steel girders. Excavation for tank. Throwing concrete.</p> <p><u>IN ADDITION:- Forest Party at MARTYN DUMP.</u> Construction and improvement of Artillery Excavations Dugouts. Salving timber and iron. Supervising and erecting Divisional Baths. Loading and Unloading parties.</p> <p><u>TRANSPORT OF MATERIAL, to E.3.c.0.7.</u> 34 tons metal, 12½ tons sand, 8 loads iron and timber, 48 barrels of cement.</p> |

| Unit. | Strength. Off. | O.R. | Map Location. | Remarks showing employment etc. |
|------------------------|-------------------|------|----------------------|-------------------------------------------------------------------------------------------------------------|
| 1st.Pn.Bn. (continued) | | | | In Addition:- (continued) |
| | | | | TRANSPORTING MATERIAL to E.4.b.9.9. 32½ tons metal, 13 tons sand, 9 loads iron & timber, 48 barrels cement. |
| | | | do do to V.28.b.4.4. | 20 tons metal, 41½ tons sand, 7 loads of iron timber, 45 barrels cement. |
| | | | do do to W. 7.a.9.8. | 20 loads of timber & iron, 218 barrels cement, 149 concrete blocks, 162½ bags cement. |
| | | | | CAESTRE SIDING. |
| | | | | Bagging 2,100 bags metal, 400 bags sand. |

W.A. Henderson

Lieut.Colonel,
C.R.E., 1st.Australian Division.

APPENDIX

23

App IV

18

25

— MAP —
 SHOWING LINES OF DEFENCE
 1ST AUST. DIV. SECTOR.
 Scale = 20,000



From C.R.E.
 1ST AUST. DIV.
 1918

18

ORIGINAL

18

APPENDIX V

| |
|---------------------------------------------|
| H. Q. 1ST AUSTRALIAN D. L. ENGINEERS. |
| No. |
| Date. |

H.Q., Divisional Engineers,
1st. Australian Division.
31st. July 1918.

SYNOPSIS of OPERATIONS from 1st. to 31st. July inclusive.

WORKS.

TRENCHES. At this stage of the work on the trench systems the digging generally speaking has been completed and sufficient wire entanglements erected for the time being.

Field Companies and Pioneers have been employed during the month on revetting. A considerable amount has been done but progress in this work has been entirely limited by the supply of material. Small "A" frames corrugated iron, revetting panels, angle iron pickets, strand wire and duckwalks were all necessary (vide plan attached). Corrugated iron was found to be a much more suitable bottom and side revetment against the "A" frame than revetting panels, as the latter soon deteriorate and break, whereas the iron and small "A" frame form a very good lasting nucleus of a trench inasmuch as they really constitute a good drain with duckwalks well up from the bottom surface. In particularly wet places corrugated iron sheets were placed under the "A" frames as well. The supply of corrugated iron was very restricted and it is only through units salvaging all the iron possible that the work progressed to any extent. The upper side revetment of angle iron pickets and "A" panels tied back to anchoring pickets has been found very serviceable and when damaged they can easily be replaced without disturbing the "A" frames.

WIRING. Comparatively little wiring, protective or tactical, has been done during the month.

TRENCH ACCOMMODATION. This work has been continuous throughout the month on the lines mentioned in the last synopsis.

GENERAL. Owing to the outposts being continually advanced by local operations and the possibility of still further advances a re-arrangement of work was necessary and it came into effect about the 22nd. of the month. In this re-arrangement the forward Field Company had to dig and wire a new front line well in advance of the original front line and formed by connecting up several of the scattered platoon posts. The Support Field Company were detailed to work on and improve the Support Line System and the COURTE CROIX and ROUGE CROIX SWITCHES. The Pioneers had to dig left and right communications forward to the new line and continue revetting the Support Line in addition. This constituted a revival in digging and the new work was soon completed ready for revetting before the end of the month. All work in rear of the Support Line was cut out except a certain amount of maintenance which was necessary. In short all available labour and material was moved forward in accordance with the several advances made by the Infantry.

COMMUNICATION TRENCHES. A certain amount of revetting has been done on MERRIS STREET and other communications have merely been 'duckwalked' on bearers.

REINFORCED CONCRETE.

This work has been pushed continuously by the 1st. Pioneer Battalion, Appendix I attached shows work done and progress to date. The supply of material has been intermittent but on no occasion has the work been completely held up, all the timber required for framing has been salvaged by the unit concerned.

SIGNBOARDS.

As there can never be too many signboards in an area these have been considerably added to during the month.

Up to June 30th. 600 signboards were made at MARTYN Dump and erected in the area. During the month of July 210 have been painted and erected.

18
DEMOLITIONS. During the month a composite section was formed, consisting of 18 men (6 from each Field Company) under an Engineer officer and they were detailed to take over the responsibility of this work. This arrangement had several advantages over the old scheme and so far has worked well.

- (i) It obviated the continual handing over of the charges with Company reliefs.
- (ii) Incidentally it centred the responsibility of what might at any moment be an extremely important job in one specially detailed unit.
- (iii) The personnel knew the charges and the locations of each and all in the Divisional Area.

See appendix II.

WATER SUPPLY.

The Pioneers have been engaged on a pumping plant in HAZEBROUCK to supply water points on the outskirts of the town (Sq.V.22.) This has involved a good deal of reinforced concrete work (215 tons) for protecting the engine and pump from shell fire.

A small water point was erected at V.18.c.7.7. by the 3rd. Field Company.

COMPANY RELIEFS.

In order to enable^a Brigades at a time to get well back for a 16 days spell from the forward area an Infantry Brigade of the 40th. Division on the 20th. of the month took over the right Brigade area and came under the orders of G.O.C. 1st. Aust. Div.

The 40th. Division were unable to put in a Field Company with the Infantry Brigade so this arrangement did not admit of a spell in the rear for a Field Company. Accordingly the Companies were re-arranged as follows:

One Field Company known as the Forward Field Company was detailed to work on the front line of each Brigade sub-sector.

The Support Field Company had to work forward of and including the Support Line in both Brigade areas.

The only slight drawback in this was that each Field Company's ~~work~~ at work in the Forward Area was concerned with working parties from each of the two Brigades in the line.

STORES AND DUMPS.

During the month R.E. material was forwarded by broad gauge railway to HONDEGHEM Siding where the Dump party off-loaded and transported it to MARTYN DUMP. The supply of material has been good and the chief demand naturally has been for revetting material of all sorts. Owing to the type of revetment adopted as previously mentioned corrugated iron proved to be the greatest shortage.

Several improvements were instituted at MARTYN DUMP, mainly through the enterprise of the Dump party itself. An oil engine was erected on a concrete bed also a circular saw and bench. The whole plant was salvaged and was in good running order by the 30th. of the month ready to hand over to 29th. Division. The main shed was also improved and repairs to roof and walls effected.

The following has been the personnel employed at MARTYN Dump:
W.O. in charge.

10 Sappers including clerk, three signwriters (one from each Field Coy) tinsmith, mechanic carpenters and cook. This party made and painted all notice boards and crosses and did other odd jobs.

10 Pioneers for loading and off-loading and odd jobs.

20 Infantry were making camouflage.

1 Lorry attached for duty to the dump has proved invaluable ^{and a} in great economy ~~in~~ transport.

The following reserve stores were carried in view of possible operations:

| | | | |
|-------------------|------------|--------------------|------|
| Artillery Bridges | 6. | Infantry Bridges | 20. |
| Concertina wire | 50 rolls. | Screw pickets Long | 750. |
| Barbed wire | 500 rolls. | Shovels | 750. |

See Appendix IV

SALVAGE. Has continued throughout the month and the Field Company billeted in BORRE has had a party employed every night salving from STRAZEELE Dump. This dump has been considerably reduced but such items as timber, pit props, girders, rails, slightly damaged X.P.M. etc. are still in sufficient quantities to make salvage operations worth while.

A revised list of Salvage by the Field Companies from 7/5/18 to 30/7/18 is attached.

HANDING OVER REPORT.

One complete copy of the Handing over report to the 29th.Division is attached herewith. Though this report is dated 2nd.August it was compiled by the 31st.July. The typed appendices in the same report are identical with those reproduced in triplicate in this synopsis.

W.A. Henderson Lieut.Colonel,
C.R.E., 1st.Australian Division.

18

APPENDIX 28
VI

H.Q., Divisional Engineers,
1st. Australian Division.
2nd. August 1918.

HANDING OVER REPORT. C.R.E., 1st. Aust. Division to
C.R.E., 29th. British Division.

Reference Maps: Sh.27 S.E. and 36A N.E. and accompanying maps.

RELIEF. The 1st. Australian Division is being relieved in the Centre Divisional Area of the XV Corps by the 29th. Division on the 3rd. August. Command will pass at 10.a.m. on the 3rd. August.

BOUNDARIES. The Boundaries of the Divisional Area and the Defensive Systems and localities are shown on map "A" and are organised as follows:

- (a) FORWARD ZONE. Consisting of Firing Line System, Support System, and Reserve System.
- (b) SECOND ZONE. Consisting of "B" "C" and "D" Lines respectively.

DISTRIBUTION. The present arrangement of troops in this area is one Brigade 1st. Australian Division in the Left Sector and one Brigade 40th. British Division in the Right Sector with a Field Company Australian Engineers attached to each Brigade. Brigades are relieved by their own Divisions after 16 days in the Front Line System.

Owing to the narrow front occupied by the Right Brigade and also to work a sixteen days rest out of the line the Field Companies are distributed as follows:

1 Field Company with Left Brigade and responsible for all work forward of the Support Line across the whole Divisional front except that allotted to the Pioneer Bn.

The other Company with the Right Brigade being responsible for the Support Line from the Right of MERRIS STREET to the Boundary and from the left of NORD STREET to the Left Boundary. Revetting to MERRIS ST. and NORD ST. behind Support Line and maintenance of COURTE CROIX and ROUGE CROIX Switches.

Apart from these definite areas no other work on the rear trenches is being carried out, except such work as strengthening of Cellars and construction of Shelters where required by the respective Brigades. The Nucleus garrison of Pioneers in ROUGE CROIX, PRADELLES and BORRE maintain these defended localities. If Division had two Brigades in Line Field Companies would work in depth which would get over the difficulty of Brigades dealing with two Field Company O.C's.

A Demolition Section has been formed to deal with the demolition of Roads, Bridges etc. This Section does not change over with the Field Companies but arranges its own relief, and stays continually in the area until Division has been relieved.

One Field Company resting.

PIONEERS. One Company on Concrete work.

Two Companies on revetting, and shelters to Support Line between MERRIS STREET and NORD STREET Communications.

MERRIS STREET Communication forward of Support Line to MONT de MERRIS. New Communication from X.19.c. to X.25.b.3.4.

Road maintenance forward of the D.G.T. Line is carried out as required, no permanent party being detailed for this work.

One Company resting.

LOCATIONS. Right Field Company in billets at W.19.d.0.8.

Left Field Company in shelters at W.13.b.5.5.

Reserve Field Company Billets and shelters U.18.b.2.2.

Pioneer Bn. H.Q. at V.12.b.9.9.

2 Companies in vicinity V.12.b.9.9.

1 Company V.24.d.6.2.

1 Company KLITE HILL Company H.Q. at W.16.d.8.3.

LOCATIONS - HORSELINES.

Right Field Company V.20.a.8.4.
 Left Field Company ~~V.20.a.3.3.~~ V.20.b.3.3.
 Reserve Field Coy. V.15.d.9.9.
 Pioneer Bn. V.11.c.3.6.

Horse Lines do not move when Companies change with the reliefs.

WORKS - FORWARD ZONE.

FRONT LINE. The series of posts which formed old front line (New Support Line). now that line has been moved forward in front of MERRIS, are being linked up to form a continuous line and will become the new Support Line.

This line is to be made continuous first between the two Communications MERRIS STREET on the Right and new Communication on the left at X.25.b.3.4. and wired across the front. The posts dug on the right and left of these two communications will then be linked up and extended to the Divisional Boundary.

The drainage of this line will be easily carried out as the ground falls away to the front and drains can be cut at frequent intervals. The portion of trench between MERRIS ST. Communication and the Right Boundary is very flat and practically no drainage: This work will have to be breastwork.

The line between the two communications is almost continuous but requires deepening and improving. Only one band of single apron has been completed across this portion up to the present.

The foregoing work is being carried out by the Infantry working parties under Sapper supervision from the Left Field Company.

COMMUNICATIONS.

Two communications have been dug between the old Support Line and the New Support Line namely MERRIS STREET on the right which strikes away from the Old Support Line at E.5.a.6.6. to E.5.b.7.1. to New Support Line at E.6.c.3.4. and communication on left from X.19.central to X.25.b.3.4. Neither of these trenches have any revetting commenced.

MERRIS STREET is duckboarded on bearers from E.6.c.3.4. to E.5.b.7.1. and has about 6'0" of cover. The portion forward has from 4'6" to 5'0" cover and requires improving.

The communication on the Left has no revetting or duckboards, but from 4'6" to 5'0" cover.

These two communications are maintained by Pioneers.

SUPPORT LINE. Division having decided to make this their main line of resistance an effort has been made to revet and provide shelters as far as possible. The following sections of the trench have been revetted with 'A' Frames and Panels:-

E.4.c.9.8. to E.4.b.1.1., E.5.a.5.5. to W.29.d.4.2., W.30.a.2.1. to W.24.d.2.3., X.19.b.3.6. to X.19.b.3.9.

This work is being carried out by the Field Company attached to the Right Brigade with Infantry parties drawn from the Brigades in whose area the section of trench lies. Except the section of trench between E.5.a.5.5. to W.30.a.1.2. which is being done by the Pioneers.

COMMUNICATIONS.

The Right Field Company is also carrying out revetting on MERRIS STREET from the junction of TIFLIS STREET at E.5.a.1.9. back to STRAZEELE AVENUE. Only about 100 yards of this section has been revetted.

Revetting of NORD STREET at W.29.b.7.7. is being carried out by the Right Field Company.

TIFLIS STREET is completely revetted.

ROUGE CROIX & COURTE CROIX SWITCHES.

Only maintenance work is now being carried out on these trenches.

RESERVE LINE.

Maintenance work only and carried out by the troops occupying the trenches.

18
WORK ON SECOND ZONE.

No work is being carried out in this Zone.
M.G.POSITIONS - MAP "C".

Shows the M.G.Positions constructed for Vickers Guns. These are mostly open positions with splinter proof shelters for the crews close to the gun position. Those that are concrete are mentioned under concrete work.

CONCRETE WORK.

One Company of the 1st.Pioneer Battalion has been on Concrete work and nine positions have been put in hand. These have been constructed in houses and near company or Battalion Headquarters. Constructional plans lettered D "1" to D "5" show these structures. D"5" is a concrete protection to Pumping Plant and engine. Appendix No.1 attached shows the location of these positions, also the present condition of the works. Positions D"1" to D"4" are constructed as Vickers Gun positions.

DEMOLITIONS.

This work is carried out by a COMPOSITE SECTION of 6 men from each Company under an Officer. They are responsible for the maintenance and overhauling of all mines, also for blowing same.

Appendix 2 attached show the location of mines and bridges, also condition and position of charges. Responsibility for blowing, see Defence scheme Appendix 6.

STORES.

See Appendix 3 attached.

WATER SUPPLY.

The HAZEBROUCK Water Supply is being repaired and new pipes laid. This work is being carried out by the 136 A.T.Company, who apply direct to "A" Branch, Division, for the necessary working parties. C.R.E. is responsible for providing shelter for the pump and Engine. This is being done and concrete shelter shown in Plan D"5" is for this purpose.

The Engine has been tested at the Corps dump and is satisfactory. This engine may be drawn through the 136 A.T.Coy. located at C.24.a.5.8., sheet 36A. N.W., Officer in charge of work Lieut. HARRIS.

MINED DUGOUTS.

There are three of these in this area at the following locations:-

BORRE - W.19.d.3.8., PRADELLES - W.21.c.5.2., ROUGE CROIX - W.10.a.7.2.

Those at BORRE and PRADELLES are completed and have been filled up with bunks and Offices. Wardens are detailed from The Bridgae in the Sector to maintain and keep dry.

That at ROUGE CROIX is still under construction and D"6" shows the progress of this work. These dugouts have been carried out under the control of the 3rd.Canadian Tunnelling Company. A working party of an officer and 20 men being detailed from the Brigade in the Sector. This party is arranged by C.R.E. through "A" Branch.

MISCELLANEOUS JOBS.

Pioneers are constructing a small Divisional Baths at V.11.c.2.5. and they are almost complete. Plan D"8" shows the proposed work.

At Divisional Headquarters Stables have just been commenced. Plan D"9" shows the proposed work.

DEFENCE SCHEME.

See Defence Scheme Section 111. The 1st.Pioneer Battalion have a Company in the COURTE CROIX SWITCH and one Company in each of Defended localities of PRADELLES, BORRE and ROUGE CROIX. Engineers Companies provide the NUCLEUS garrisons for "D" Line in which have been placed Rations, Ammunition and Bombs. This will be collected at Horse Lines - V.20.a.9.9. and handed over in bulk.

FUTURE WORKS PROGRAMME.

It was proposed at a future date to push forward and take the OUTERSTEENE RIDGE and hold a line along approximately the OUTERSTEENE - BAILLEUL ROAD. A New Support Line would then be sited on the reverse slopes of the OUTERSTEENE RIDGE. All work in hand at the present time is to be carried out to this end. Communications should be revetted and pushed as far forward to this end.

Map 'C' Shows the proposed approximate line.

DEFENDED LOCALITIES.

Envelope 'E' contain plans of the defended localities of STRAZEELE, PRADELLES, BORRE, ROUGE CROIX & COURTE CROIX.

W A Henderson

Lieut. Colonel,
CRE., 1st. Australian Division.

| Nature of Return. | Time due at XVth. Corps. | R e m a r k s. |
|-------------------------------------------------------------------------------------------|-----------------------------|----------------------------------------------------------------------------|
| Estimate of material required for concrete for period 1st. to 15th. of succeeding month. | 12 noon 13th. each month. | Fortnightly. Station to where material is to be consigned should be given. |
| Estimate of material required for concrete for period 16th. to end of succeeding month. | 12 noon 26th. each month. | Fortnightly. |
| Estimate of round iron for reinforcement (in tons) required for the following month. | 12 noon 22nd. each month. | Monthly. |
| Estimate of material required for roads, for period 1st. to 15th. of succeeding month. | 12 noon 13th. each month. | Fortnightly. |
| Estimate of material required for roads, period 16th. to end of succeeding month. | 12 noon 26th. each month. | Fortnightly. |
| Return showing receipts (in tons) of Sand & Gravel during period 1st. to 15th. of month. | 12 noon 16th. each month. | Fortnightly. |
| Return showing receipts (in tons) of Sand and Gravel during period 16th. to end of month. | 12 noon 2nd. each month. | Fortnightly. |
| Estimate amount of Barb Wire required for the ensuring week. | Last D.R. on TUESDAYS. | Weekly. |

W. H. Howling Capt. & Adjt.,
for C. R. E.,
1st. Australian Division.

APPENDIX 1

| I t e m. | Quantity | | I t e m. | Quantity | |
|-----------------------------|----------|--------|----------------------|----------|--------|
| | No. | Tons. | | No. | Tons. |
| 'A' Frames. | 4700 | | Malthoid rolls. | 100 | 1.60. |
| Ammonal | | 1.10. | Mauls & helves | 50 | |
| Anti-gas cloth.yds. | 275 | | Nails assd. | | 1.50. |
| Barrows wheel | 12 | | Paint assd. | | 0.50. |
| Bridges artillery | 3 | | Picks & helves | 290 | |
| Camouflage rolls | 300 | | Pickets screw L. | | 15.00 |
| Canvas hessian,bolts | 25 | 1.30. | " " M. | | 3.50. |
| Cupolas 'C' Type,sheets | 1300 | | " " S. | | 8.00. |
| " 'B' " " | 960 | | " A.I. Long. | | 54.00. |
| Detonators No.13. | 20 | | " " Short. | | 18.00. |
| " No. 8. | 45 | | " wood,long. | 1155 | |
| Duckwalks | 3150 | | " " short | 7925 | |
| E.P.Metal | | 12.00. | Sandbags. | | 26.50. |
| Fascines | 100 | | Shovels | 580 | |
| Fuse safety faths. | 50 | | Solution I.R.pounds. | 2 | |
| " Inst. " | 75 | | Tapes tracing | 45 | |
| Fuses electric No.14. | 25 | | Timber assd.sup.ft. | 4100 | |
| Guncotton,pounds | 15 | | Troughs canvas | 3 | |
| Hose suction,lths. | 12 | | Wire barbed | | 34.00 |
| " delivery " | 25 | | " plain | | 3.50. |
| Ignitors Max 10. | 10 | | " netting | | 4.20. |
| Iron Corr. | | 30.00 | " French | | 7.10. |

CAMOUFLAGE:-

The following camouflage has been made by Infantry party of 20 men attached to the Dump for the purpose:-

From June 1st. to June 30th. = 350 rolls 6 feet wide.
 " July 1st. to July 31st. = 180 rolls 6 feet wide.

(During July the supply of green hessian from Salvage was very much less than for the month of June hence the above falling off of the Camouflage made).

CROSSES:-

The following Crosses have been made for Units of 1st.Australian Division:-

From June 13th. to June 30th. = 60
 " July 1st. to July 31st. = 56

B. Malloway Capt. & Adjt.,
 for C. R. E.,
 1st.Australian Division.

LIST OF MATERIAL SALVED BY FIELD COMPANIES from 7/5/1918 to 31/7/1918.

APPENDIX

| M a t e r i a l. | 1st.F.C. | 2nd.F.C. | 3rd.F.C. | Total. |
|-----------------------------|----------|----------|----------|--------|
| Adzes. | 12 | - | - | 12 |
| Adze heads. | - | 18 | - | 18 |
| Air Pumps. | 30 | - | - | 30 |
| " " F.& P.Patent. | 2 | - | - | 2 |
| Ammonal, 50 lb.cases. | - | - | 37 | 37 |
| Artesian well pipes, sets. | 27 | - | - | 27 |
| Asbestos packing, coils. | - | - | 10 | 10 |
| Augers 3/8" | - | - | 36 | 36 |
| " 5/8" | - | - | 89 | 89 |
| " 3/4" | - | - | 71 | 71 |
| " 1" | - | - | 14 | 14 |
| " 1 1/4" | - | - | 24 | 24 |
| " 1 3/4" | - | - | 27 | 27 |
| " 2" | - | - | 27 | 27 |
| " handles. | - | 24 | 30 | 54 |
| Axes felling | - | - | 37 | 37 |
| " hand | - | - | 9 | 9 |
| " " handles. | 7 | - | - | 7 |
| Bags rubber for explosives. | - | - | 133 | 133 |
| Baskets Cane small | - | - | 9 | 9 |
| " " large. | - | - | 99 | 99 |
| Bath house fittings, sets. | 3 | - | - | 3 |
| Bellows blacksmith 36" | 7 | - | 3 | 10 |
| " " 54" | 3 | - | - | 3 |
| Belt power lengths. | 1 | - | 1 | 2 |
| Billhooks. | - | - | 190 | 190 |
| Blacksmith flatters. | 1 | - | - | 1 |
| " tongs, prs. | 1 | - | - | 1 |
| Blackstone oil engine. | 1 | - | - | 1 |
| Blocks triple lead 1 1/2" | - | - | 17 | 17 |
| " " " 3" | - | - | 11 | 11 |
| " double " 1 1/2" | - | - | 30 | 30 |
| " " " 3" | - | - | 4 | 4 |
| " single " 1 1/2" | - | - | 10 | 10 |
| " " " 3" | - | - | 8 | 8 |
| " snatch 1 1/2" | - | - | 12 | 12 |
| Bolts & Nuts, boxes, assd. | 5 | 3 | 6 | 14 |
| " " cwt. assd. | 92 | - | - | 92 |
| " door, dozs. | - | - | 148 | 148 |
| " & Nuts, boxes. | - | - | - | - |
| * " cutters, pairs. | 5 | - | - | 5 |
| Brooms. | - | - | 12 | 12 |
| " stable | - | - | 4 | 4 |
| " bass | - | - | 5 | 5 |
| " handles. | 100 | - | - | 100 |
| Brushes tar. | - | - | 72 | 72 |
| " paint 4 1/2" | 32 | - | 233 | 265 |
| Buckets canvas | 10 | - | - | 10 |
| " galv.iron. | 4 | - | - | 4 |
| *Bridges trench. | 11 | - | - | 11 |
| Calico oiled rolls. | - | - | 32 | 32 |
| Canvas rolls. | - | - | 10 | 10 |
| " rott proof, rolls. | 132 | - | 73 | 205 |
| " " " 3' wide, rolls. | - | - | 53 | 53 |
| " white, rolls. | - | - | 32 | 32 |
| Cement barrels. | - | 1 | - | 1 |
| Chisels. | - | - | 12 | 12 |
| " cold long. | 7 | - | 38 | 45 |
| " " 18" | - | - | 1 | 1 |
| Coach screws, cwt. | 52 | - | - | 52 |
| Coir matting, rolls. | - | - | 4 | 4 |

| Material. | 1st.F.C. | 2nd.F.C. | 3rd.F.C. | Total. |
|--------------------------------------------|----------|----------|----------|--------|
| Cordage 1½", coils. | - | + | 6 | 6 |
| " 1" tarred, coils. | 5 | - | - | 5 |
| " 2" coils. | - | - | 8 | 8 |
| " 2" tarred, coils. | - | - | 62 | 62 |
| " 1½" " " | - | - | 8 | 8 |
| " 3" coils. | 1 | - | 12 | 13 |
| " 1" hanks. | - | - | 3 | 3 |
| Corrugated iron, sheets. | 1559 | 1003 | 392 | 2954 |
| Cupolas "B" Type, sheets. | - | 25 | - | 25 |
| " "C" " " | - | - | 30 | 30 |
| " Large " " | - | 9 | - | 9 |
| Differential gear, cases. | 2 | - | - | 2 |
| Dogs spikes. | 150 | - | - | 150 |
| " " cwts. | 5 | - | - | 5 |
| " " double. | - | - | 500 | 500 |
| " " mining. | - | - | 160 | 160 |
| " " G.S.W.Loads. | 1 | - | - | 1 |
| " " 7" bags. | 81 | 3 | - | 84 |
| Door handles and fittings, dozs. | - | - | 3 | 3 |
| Draw knife. | 1 | - | - | 1 |
| Drills ratchet steel. | - | - | 1 | 1 |
| " steel, assd. | - | - | 200 | 200 |
| " twist, assd. | 30 | - | - | 30 |
| " wood. | - | - | 25 | 25 |
| Dynamo. | 1 | - | 3 | 4 |
| Expanded metal cases. | 34 | 4 | 28 | 66 |
| " " sheets. | - | 1 0 | - | 10 |
| Files. | - | - | 12 | 12 |
| Floats copper 8" | - | - | 2 | 2 |
| Forge portable. | 1 | - | - | 1 |
| Fuse, Electric cases of 200 | - | - | 2 | 2 |
| " Ignitors " " 300 | - | - | 2 | 2 |
| " Inst.Drums. | 8 | - | 27 | 35 |
| " Safety, tins. | 5 | - | 150 | 155 |
| Gas alarm. | 1 | - | - | 1 |
| Glass 24" x 20", cases. | 10 | - | - | 10 |
| Glue bags, 1 cwt. | 6 | - | - | 6 |
| Grindstone & fittings 36" | 4 | - | - | 4 |
| Guncotton cases of 16 slabs. | - | - | 136 | 136 |
| Hammers hand. | 20 | - | - | 20 |
| " 2 lbs. | - | - | 23 | 23 |
| " 2½ lbs. | 3 | - | - | 3 |
| " 4 lbs. | - | - | 124 | 124 |
| " 6 lbs. | - | - | 7 | 7 |
| " 7 " | - | - | 22 | 22 |
| " 10 " | 10 | - | - | 10 |
| " 14 " | - | - | 46 | 46 |
| " fitters. | - | - | 22 | 22 |
| " handles. | 7 | - | - | 7 |
| " mash 4 lbs. | 2 | - | - | 2 |
| " sledge. | - | - | 15 | 15 |
| " rivetting. | - | - | 15 | 15 |
| " tinsmith. | 1 | - | 23 | 24 |
| Hinges, cases. | 1 | - | - | 1 |
| " iron, long. | - | - | 54 | 54 |
| " " small 3" | - | - | 16 | 16 |
| " "T" pairs. | 5 | - | - | 5 |
| Hose canvas, lengths. | 13 | - | - | 13 |
| " " 2", " | - | - | 39 | 39 |
| " " 3" " | - | - | 23 | 23 |
| " delivery 2", lengths. | - | - | 62 | 62 |
| " " 3" " | - | - | 65 | 65 |
| " suction 2" " wire bound. | - | - | 7 | 7 |
| " " 3" 2" wire bound. , lengths | - | - | 71 | 71 |
| " 2" wire bound. | - | - | - | - |

| M a t e r i a l. | 1st.F.C. | 2nd.F.C. | 3rd.F.C. | Total. |
|----------------------------------|----------|----------|----------|--------|
| Hose suction 3" lengths. | - | - | 51 | 51 |
| " rubber 3/8" coils. | - | - | 1 | 1 |
| " canvas "D" 3" lengths. | 1 | - | - | 1 |
| " nozzles copper | - | - | 2 | 2 |
| Inglis bridging material, loads. | 11 | - | - | 11 |
| " " decking " | 1 | - | - | 1 |
| " " material sections. | 16 | - | - | 16 |
| Iron flat 3" x 1/4", cwt. | 8 | - | - | 8 |
| " bar 3" x 1/4", feet | 770 | - | - | 770 |
| Jim crows. | 8 | - | - | 8 |
| Lead wool, bags. ? | 8 | - | - | 8 |
| Level F.S. | - | 1 | - | 1 |
| Locks packets. | 4 | - | - | 4 |
| " rim. | 1 | - | - | 1 |
| Loop hole plates, G.S.W. Loads. | 2 | - | - | 2 |
| Mallets heads. | - | - | 3 | 3 |
| " " carpenters. | 17 | - | - | 17 |
| Malthoid, rolls | 232 | 202 | 185 | 519 |
| Marble slabs. | 1 | - | - | 1 |
| Maul heads. | 349 | - | 7 | 356 |
| Meas. rods. 6' | 13 | - | 9 | 22 |
| Merewether Fire Engine. | 1 | - | - | 1 |
| Nails 2", cwt. | - | 5 | 52 | 57 |
| " 2 1/2" " | - | 16 | 22 | 38 |
| " 3" " | - | - | 3 | 3 |
| " 5" | - | 22 | 33 | 55 |
| " 6" | - | - | 1 | 1 |
| " mixed. | 856 | 19 | 468 | 1343 |
| Paint black, 56 lbs. tins. | - | - | 76 | 76 |
| " " 28 " " | - | - | 89 | 89 |
| " green 56 " " | - | - | 66 | 66 |
| " khaki 56 " " | - | - | 289 | 289 |
| " blue 56 " " | - | - | 3 | 3 |
| " service, drums. | 33 | 42 | 32 | 107 |
| " assorted 56 lbs. tins. | - | 41 | 531 | 572 |
| " " 28 " " | - | - | 43 | 43 |
| " dry bule kegs. | - | - | 3 | 3 |
| " " kegs. | 2 | - | - | 2 |
| Petrol, gals. | - | 4 | - | 4 |
| Pickets A.I. Long. | 170 | 45 | - | 215 |
| " " Medium. | - | 20 | 1630 | 1650 |
| " " Short. | - | 1770 | 156 | 1926 |
| " screw, Long. | - | - | - | - |
| " medium screw. | - | 390 | - | 390 |
| " short " | - | 350 | - | 350 |
| " wood, long. | - | 150 | - | 150 |
| " " short. | 85 | 150 | - | 230 |
| Picks. | 122 | 400 | 230 | 752 |
| " heads. | 361 | 10 | 3910 | 4281 |
| " helves. vases. | 3 | 10 | - | 13 |
| " " " | - | - | 2238 | 2238 |
| " " mining heads | 75 | - | - | 75 |
| " " helves. | 138 | - | - | 138 |
| " push. | 30 | - | - | 30 |
| Pinch bars. | 143 | - | 9 | 152 |
| Pipes steel 2", feet. | 3500 | - | - | 3500 |
| " " 4" lths. | 37 | 1468 | - | 1505 |
| " " 4" feet. | 2300 | - | - | 2300 |
| " " 6" " | 2260 | - | - | 2260 |
| " " 8" " | 24 | - | - | 24 |
| " fittings cwt. (assd.) | 8 | - | - | 8 |
| " " " G.S.W. Loads. | 2 | - | - | 2 |
| " " " boxes. | 24 | - | - | 24 |
| " " 1/4" cwts. | 6 | - | - | 6 |
| " " couplings 3" | - | - | 24 | 24 |
| Pipe Tongs. | 4 | - | 12 | 16 |
| " " footprint, prs. | - | - | 53 | 53 |
| " cutters. | - | - | 17 | 17 |
| Pit props. | 170 | 45 | - | 215 |

| M a t e r i a l. | 1st.F.C. | 2nd.F.C. | 3rd.F.C. | Total. |
|--------------------------|----------|----------|----------|--------|
| Planks crossing. | 25 | - | - | 25 |
| Primers Mk. 1. 1 oz. | - | - | 1575 | 1575 |
| Pumps L. & F. | 25 | - | 67 | 92 |
| " R.E. | 11 | - | 3 | 14 |
| " Trench. | 5 | - | 72 | 77 |
| Pump handles. | 41 | - | 90 | 131 |
| " " iron. | 54 | - | - | 54 |
| " roses. | 4 | - | 28 | 32 |
| " fittings, boxes. | 1 | - | - | 1 |
| Rails steel | - | 6 | - | 6 |
| " " 33' long. | - | 43 | - | 43 |
| Revetting Panels. | - | 30 | - | 30 |
| Red lead, casks small | 55 | - | - | 55 |
| Rivets, cases. | 3 | - | - | 3 |
| Road scrapers. | 60 | - | - | 60 |
| RQS.Js. | 232 | 335 | 502 | 1069 |
| R.S.Js. 9" x 5" | 78 | 20 | - | 98 |
| Sandbags. | 5340 | 5250 | 11050 | 21640 |
| Saws band large. | 1 | - | - | 1 |
| " crosscut. | - | - | 12 | 12 |
| " Hand. | - | - | 219 | 219 |
| " lightening. | - | - | 32 | 32 |
| " circular. | 3 | - | - | 3 |
| " rip. | - | - | 178 | 178 |
| Screws mixed, lbs. | 28 | - | 159 | 187 |
| " gross assorted. | 69 | - | - | 69 |
| Scythe stones. | - | - | 9 | 9 |
| Shears plate, pairs. | 32 | - | - | 32 |
| Shovels | 50 | - | 1688 | 1738 |
| Shovel handles. | - | - | 50 | 50 |
| Shovels R.E. | - | - | 370 | 370 |
| Signboards enamelled. | 25 | - | - | 25 |
| Shower fittings, boxes. | 1 | - | - | 1 |
| Sleepers. | 482 | 593 | 370 | 1445 |
| Solder boxes. | - | - | 2 | 2 |
| Spades, post hole. | 100 | - | 143 | 243 |
| Spanners adjusting. | - | - | 17 | 17 |
| " for pump hoses. | - | - | 10 | 10 |
| Spikes, cases | 9 | - | 8 | 17 |
| Staples, cases | 87 | - | 568 | 655 |
| " (French wire) boxes. | 20 | - | 900 | 920 |
| Spun yarn, coils. | - | - | 37 | 37 |
| Stocks and dies bulldog. | 1 | - | - | 1 |
| " " box. | 1 | - | - | 1 |
| " " pipe sets. | - | - | 1 | 1 |
| String balls. | - | - | 15 | 15 |
| Stove. | 1 | - | - | 1 |
| Switch board. | 1 | - | - | 1 |
| Tacks, cases. | - | - | 19 | 19 |
| Tanks water, 50 gals. | - | - | 1176 | 1176 |
| " canvas 150 gal. | - | 2 | 1 | 3 |
| " corr.iron, 50 gal. | - | - | 1 | 1 |
| " " " 150 " | - | - | 1 | 1 |
| " canvas 600 gal. | - | 2 | 6 | 8 |
| " " 2300 " | - | - | 21 | 21 |
| " 100 gallons. | - | 6 | - | 6 |
| Tapes tracing, rolls. | - | - | 150 | 150 |
| " rubber tins. | 10 | - | - | 10 |
| " water brass, assorted. | - | - | 86 | 86 |
| Tar barrels | - | 2 | - | 2 |
| Troughs canvas. | 227 | - | 393 | 620 |
| Trowels. | 32 | - | - | 32 |
| Twine, balls. | - | - | 18 | 18 |
| Troughing steel, sheets. | 30 | - | - | 30 |

| M a t e r i a l. | | | 1st.F.C. | 2nd.F.C. | 3rd.F.C. | Total. |
|------------------|------------------------------|--|----------|----------------|----------|-------------------|
| Timber | 14" x 6" feet | | - | - | 36 | 36 |
| " | 12" x 6" 20' lengths. | | - | 53 | - | 53 |
| " | 12" x 6" feet. | | 735 | - | - | 735 |
| " | 12" x 5" " | | - | 108 | - | 108 |
| " | 12" x 4" " | | - | 1200 | - | 1200 |
| " | 12" x 1" " | | - | - | 345 | 345 |
| " | 10" x 10" " | | - | 75 | - | 75 |
| " | 10" x 2", 10' lengths. | | - | 42 | - | 42 |
| " | 9" x 3" feet. | | - | 650 | - | 650 |
| " | 9" x 2" " | | - | 4164 | - | 4164 |
| " | 8" x 8", 25' lengths. | | - | 1 | - | 1 |
| " | 8" x 3" feet. | | - | 128 | 160 | 288 |
| " | 7" x 7" " | | - | 220 | - | 220 |
| " | 7" x 1" " | | - | - | 4444 | 4444 |
| " | 7" x 3" planking. feet. | | 200 | 4539 | 600 | 5339 |
| " | 6" x 4" feet. | | - | 110 | - | 110 |
| " | 6" x 3" " | | - | 50 | - | 50 |
| " | 6" x 2 1/2" " | | - | - | 310 | 310 |
| " | 6" x 2 1/2" " flooring. | | - | - | 120 | 120 |
| " | 6" x 2" lengths. | | - | 30 | 20 | 50 |
| " | 6" x 1 1/2" feet. | | - | 1110 | - | 1110 |
| " | 6" x 1" feet, flooring. | | - | 200 | 4660 | 4860 |
| " | 6" x 1" " planking. | | - | - | 820 | 820 |
| " | 5" x 3" feet. | | - | 100 | - | 100 |
| " | 4" x 4" " | | - | 96 | - | 96 |
| " | 4" x 2" " | | 40 | 400 | - | 440 |
| " | 4" x 1" " | | - | - | 1000 | 1000 |
| " | 3" x 3" " | | - | - | 350 | 350 |
| " | 3" x 2" " | | - | 760 | 70 | 830 |
| " | 3" x 3/4" " | | - | 28400 | - | 28400 |
| " | 2" x 2" " | | - | - | 1770 | 1770 |
| " | T. & G. 7" x 7/8" feet. | | - | 750 | - | 750 |
| " | T. & G. 6" x 7/8" " | | - | 7516 | - | 7516 |
| " | Mixed, feet. | | 1940 | - | 150 | 2090 |
| " | Weatherboard, feet. | | - | - | 9120 | 9120 |
| " | Rough, feet | | 2000 | - | - | 2000 |
| " | Light, " | | 1000 | - | - | 1000 |
| " | Sawn, feet. | | 300 | - | - | 300 |
| " | Mining sets sets. | | 60 | - | - | 60 |
| Valves | Ball, Boxes. | | 1 | - | - | 1 |
| " | Non return. | | 14 | - | - | 14 |
| " | Wheel. | | 30 | - | - | 30 |
| Vices | pipe small. | | - | - | 2 | 2 |
| " | pipe xxxx large. | | - | - | 12 | 12 |
| " | chain. | | 2 | - | 3 | 5 |
| Washers, | lbs. | | 23 | - | - | 23 |
| Wheelbarrows. | | | 4 | - | 9 | 13 |
| Wheels | tunnel trolly 12" | | - | - | 10 | 10 |
| " | " " 9" | | - | - | 20 | 20 |
| Wire cutters | small, pairs. | | - | - | 253 | 253 |
| " | " large " | | 180 | 300 | 300 | 480 |
| " | shears prs. | | - | - | 100 | 100 |
| " | cutters rifle pairs. | | - | - | 24 | 24 |
| Wheels & axle, | pairs. | | 1 | - | - | 1 |
| Wire barbed, | coils. | | 114 | 380 | 30 | |
| " | concertina, coils. | | - | - | 106 | 106 |
| " | French, Coils. | | - | 30 | 58 | 88 |
| " | Plain, Coils. | | 94 | 147 | 180 | |
| " | Netting, rolls. | | 418 | - | 2 | 420 12 |
| " | Tie, coils. | | 12 | - | - | 12 |
| Wire rope | 1/2" dia. Coils. | | 9 | - | 6 | 15 |
| " | " 1/4" " " | | - | - | 5 | 5 |

Wire cable 1 1/8", 6 ply cable, estimated 1,500 yards salvaged in two pieces by 1st. Field Company Engineers.

From 1st. Australian Divisional Engineers to 29th. Divisional Engineers.

SUPPLY.- Requisitions are wired to Corps daily to arrive at Stores Officer before mid-day for the next days requirements.

The Stores Officer replies by wire what he is forwarding and the material arrives daily at HONDEGHEM SIDING by Broad Gauge Railway.

The train usually arrives at 2 .p.m. and is off loaded immediately by the Dump Loading Party. Transport used to cart the material to the dump is :-

- 1 lorry attached to the Dump,
- 3 G.S.Wagons which report for duty daily.

The off loading party consists of 10 men who live at the Dump.

CONCRETE MATERIAL.- is consigned by rail to C.E. XVth. Corps, CAESTRE STONE SIDING, where the trains are off loaded and the material collected by parties arranged for by C.R.E., Australian Division.

Estimates for this material are forwarded to Corps, as per attached list of R.E. RETURNS to Corps - Also material collected is reported to Corps (Vide. same list of Returns).

DUMPS. MARTYN DUMP, Sheet 27 - V.21.b.5.5. is the main Divisional R.E. DUMP. The accommodation of the Dumps is as follows :-

- 1 Store 80' x 30' which is in good condition and can be locked.
- 1 Office with quarters for two men - 24' x 16'.
- 1 Paint Shop 24' x 16'.
- Cookhouse, Mess Hut and Cook's quarters.

The main Store contains 1 Oil Engine and Circular Saw bench all in working order (This plant has been salvaged and erected in its present position by the Dump Personnel).

3 carpenters benches.

Also there are two tarpaulins and 1-200 gallon tank at the dump.

The Dump is connected by telephone to the Division.

STOCK. Nominally one days supply is carried in the Dump and on handing over the W.O. in charge will present a complete stock sheet of all material in the Dump.

The following reserve material is always held in the Dump as a special reserve for possible operations :-

| | |
|-------------------|-----------|
| Artillery bridges | 6 |
| Infantry Bridges | 20 |
| Concertina wire | 50 coils. |
| Barbed wire | 500 " |
| Screw pickets L. | 750 |
| Shovels | 750 |

The following personnel is employed at MARTYN DUMP :-

W.O. i/c. and 10 Sappers including 1 Sign Writer from Each Field Company, clerk, carpenters, Tinsmith, mechanic and cook.

10 Pioneers for loading parties and odd jobs.

A party of 20 Infantry for making up camouflage out of salvaged material - wire netting, green hessian and paint.

FORWARD DUMPS.- Each of the Field Companies in the Forward Zone has a Dump established at or near their Company H.Q. namely :-

- At BORRE - W.19.d.1.8.
- At W.13.b.1.1.

Each of these dumps carries at most one days supply of R.E. Material for the type of work in hand.

BURSTERS. 1,400 bursters have been off loaded at CAESTRE STONE SIDING and are handed over to the 29th. Division.

EMPTY CEMENT CASKS.- Are collected and forwarded to HONDEGHEM SIDING where they are consigned to C.R.E., S.O. NORTH and Corps notified of the numbers consigned. R.T.O. HONDEGHEM requires one days notice.

W. H. Howling Capt. & Adjt.,
for C.R.E., 1st. Australian Division.

PART Sheet 27 SE
36 NE
Scale = $\frac{1}{20,000}$



PROGRESS MAP (To date 17 May 1918)
1st Aust Division
Scale = 20,000
Part 27 of 27



Map IX

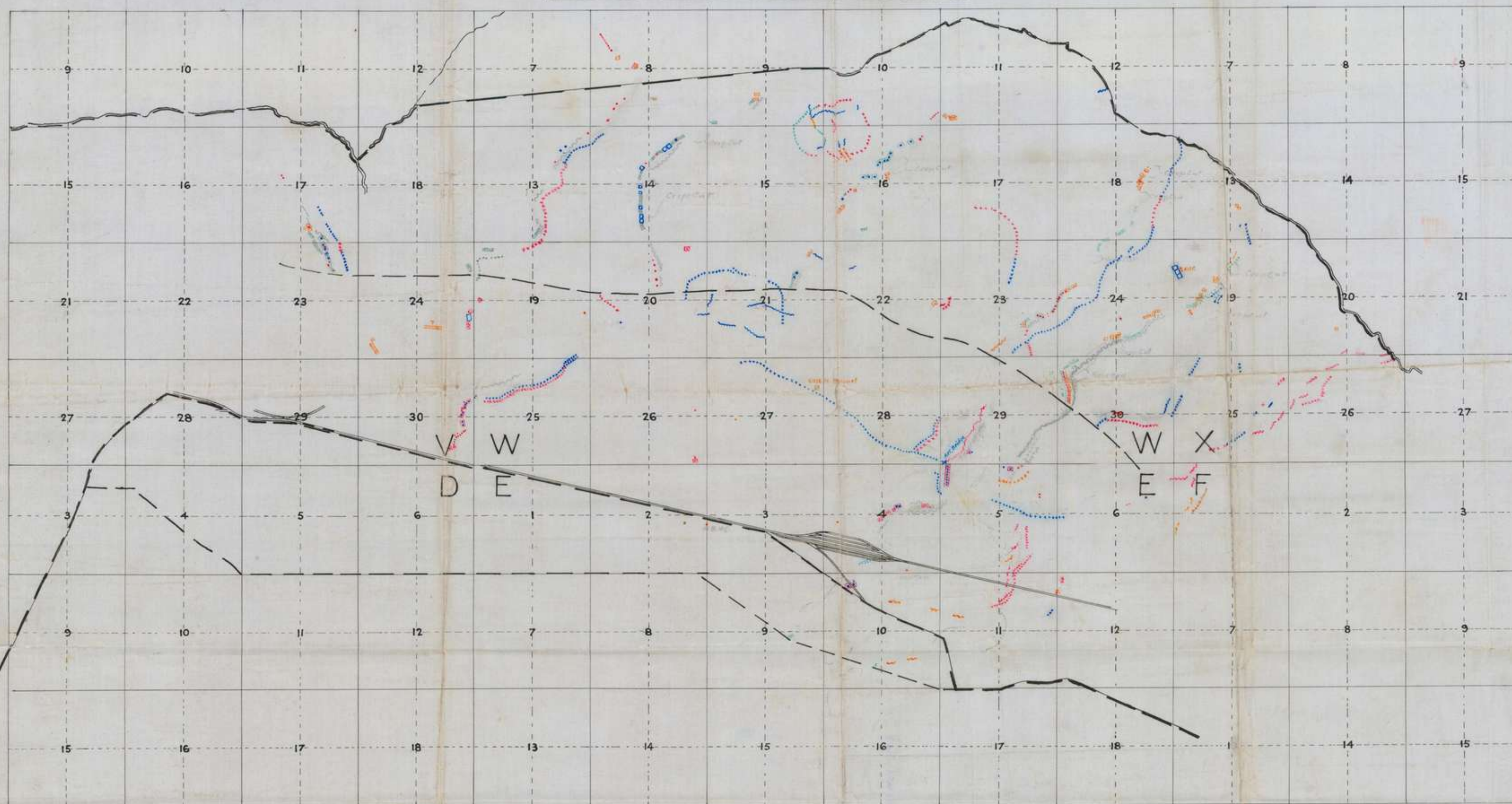
LEGEND

- Troops
- Gaps in wire for Artillery
- Roads to be mined
- Roads mined
- Roads blown

PROGRESS MAP

1ST AUST. DIV.

Scale = 20,000



Sheet 27 S.E.
Edition 3^B (Local)

Sheet 36^A N.E.
Edition 7^A (Local)

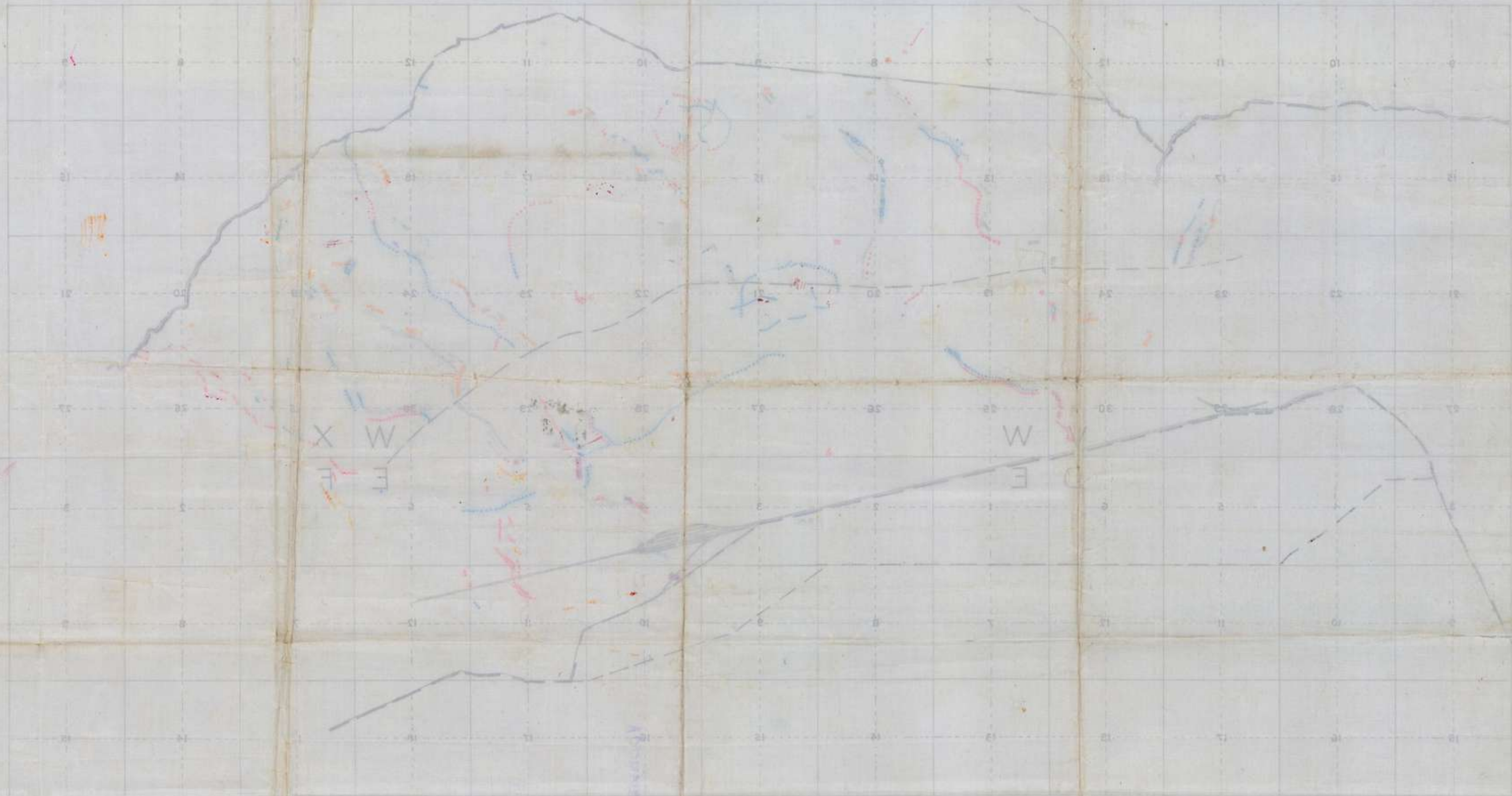
| COLOR INDEX | | |
|-------------|----------|---------------|
| WEEK ENDING | NEW WORK | IMPROVED WORK |
| June 21 | BLUE | Indicated |
| " 28 | RED | and noted |
| July 5 | GREEN | in Pencil |
| " 12 | YELLOW | |

Shelters commenced completed

FROM C.R.E.
1ST AUST. DIV.

Appendix VII

PROGRESS MAP
1st Aust. Div.
 Scale = 20,000



Sheet 2732 (Lower)
 Edition 28 (Lower)
 Sheet 2642 (Lower)
 Edition 28 (Lower)

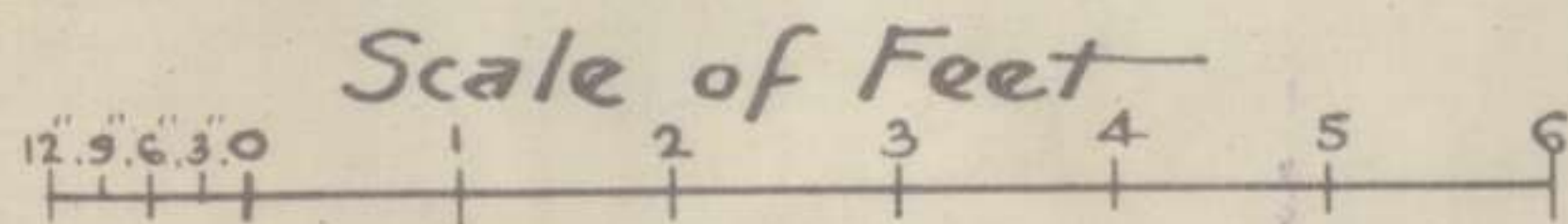
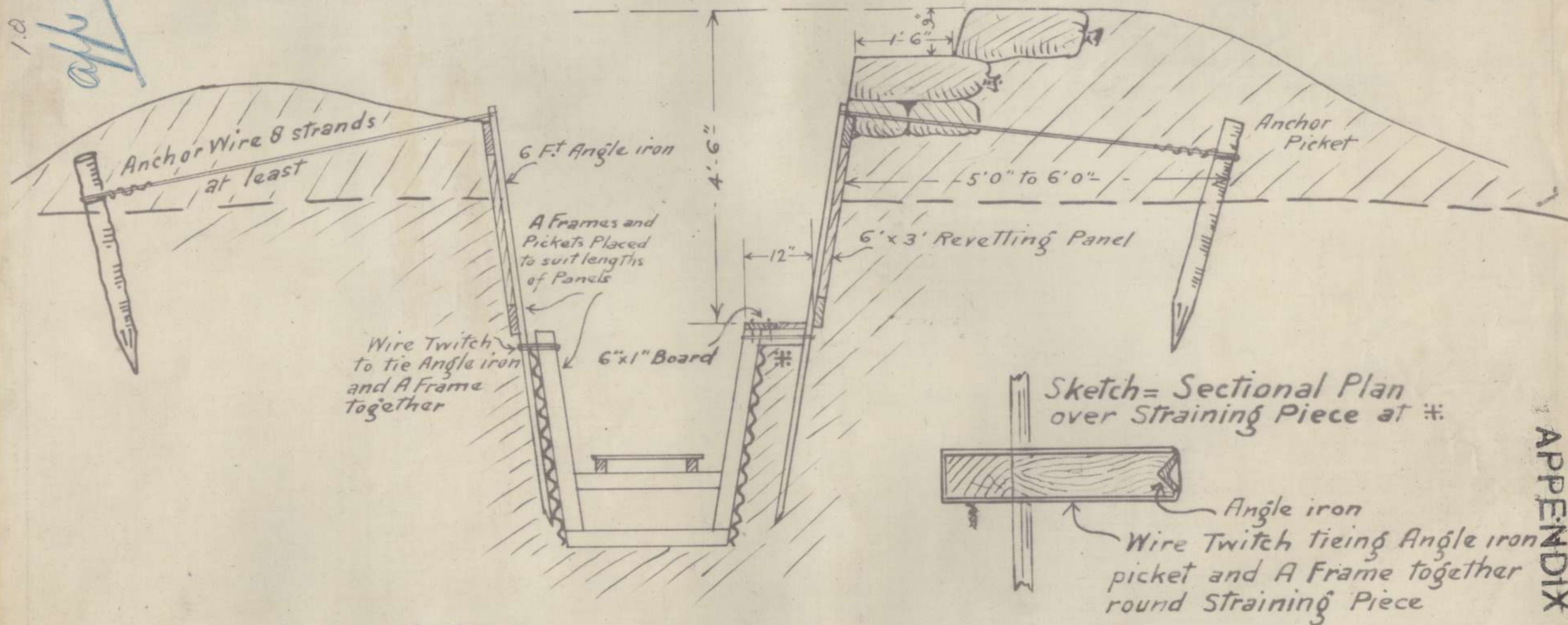
From C.R.E.
 1st Aust. Div.

40
 8

24-11-1918
 completed
 18

TRENCH REVETMENT

For Fire Trench



C.R.E 1ST AUST DIV
31.7.1918

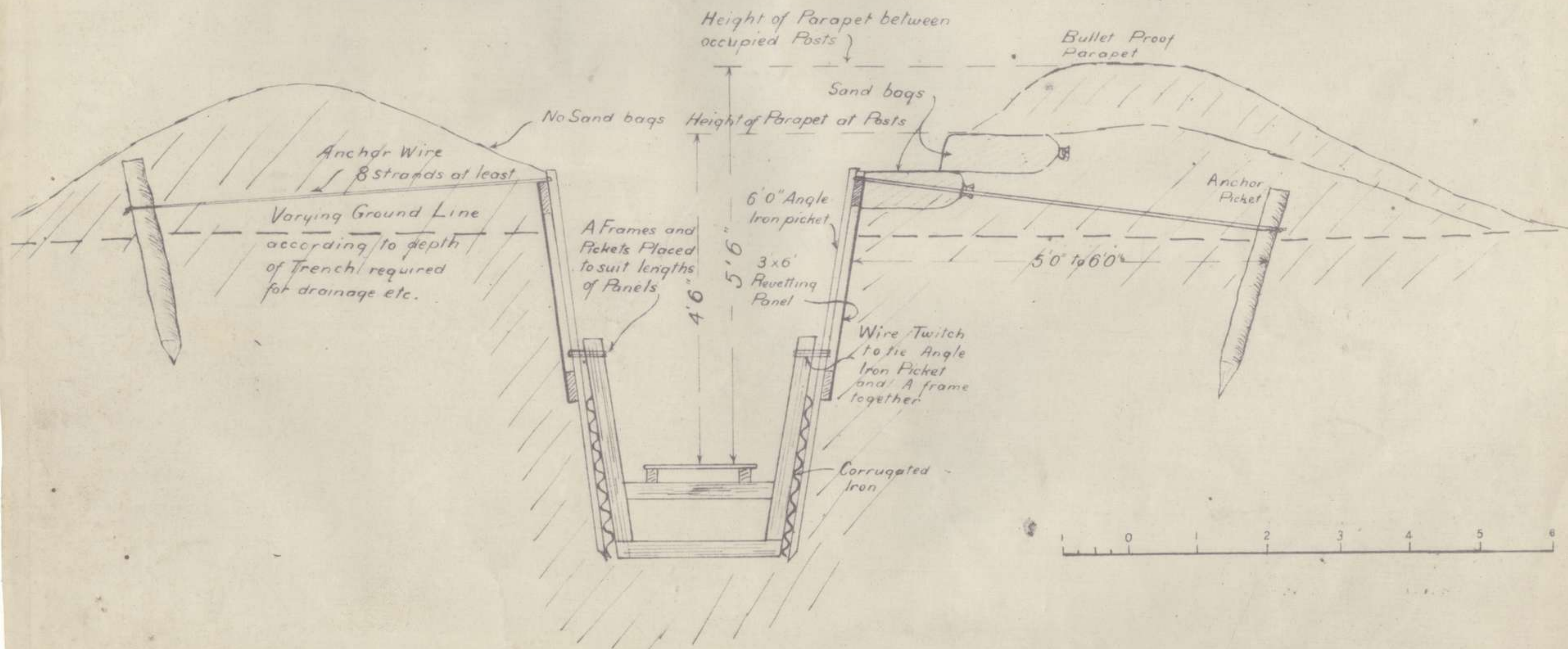
APPENDIX 10

43

app 10 474
01440

TRENCH REVETMENT

For Communication Trench



C.R.E. 1st AUST. DIV.
19 7 1918.

44