

AWM4
Australian Imperial Force unit war diaries,
1914-18 War

Engineers

Item number: 14/8/15

Title: Headquarters 2nd Australian
Divisional Engineers

December 1917



AWM4-14/8/15

Instructions regarding War Diaries and Intelligence Summaries are contained in F. S. Regs., Part II. and the Staff Manual respectively. Title Pages will be prepared in manuscript.

or
****INTELLIGENCE SUMMARY****

(Erase heading not required.)

HQ. DIVISIONAL ENGINEERS
 2nd Australian Division

Place	Date	Hour	Summary of Events and Information	Remarks and references to Appendices
RAVELSBERG	1st		Nothing to record.	
	2nd		C.R.E. returned from leave. 7 cyclists 6th Field Co. commenced erection of 4 N.B. huts for Div. Artillery at LE PETIT MORTIER. Lieut. POLSON 7th Field Co. detached to Corps to control Light Railway traffic in Corps Area.	
	GENERAL. during month.		Chief employment for Companies and Pioneers at present is the burying of water mains to a depth of 2'6" to protect from risk of freezing. (See map, appendix 2 attached) Also miscellaneous jobs such as constructing incinerators, establishing baths, etc. Parties of infantry are also, whenever available, used for pipe burying.	
	8th		C.R.E. went to see C.R.E. 3rd Aust. Div. to ascertain any available information regarding the area which we have to take over from the 3rd Division, probably about 14th or 15th December.	
	10th		With Chief Engineer Aust. Corps visited PALMER baths, where some work is required to improve accommodation and drying rooms.	
	11th		Went out with C.R.E. 3rd Aust. Div. (Lt.Col. CLOGSTOUN) and visited the northern portion of Divisional area, motored down to MOTOR CAR CORNER and walked over the southern portion of the section. Engineers take over on 16th, Pioneers on 14th.	
	12th		Made inspection of Pipe line burying work with Captain NOEDL who is generally supervising the work. A squadron of enemy aeroplanes came over, dropped several bombs causing many casualties among troops.	
	13th		Went out with party to reconnoitre ground for Corps Defence line. Present were:- Brig. Genl. C.B.B.WHITE, B.G.G.S. Corps; Chief Engineer, Brig. Genl. Lotbiniere; Brig. Genl. Cannon, 12th Bde.; Brig. Genl. Paton, 6th Bde.; Lt.Col. Miles, G.S.O. 1 this Divn.; Major McCall, G.S.O. II; Lt. Col. Clogstoun, C.R.E. 3rd Aust. Div. South of and in front of PLOEGSTEERT WOOD was visited. Arrangements proposed regarding the carrying out of this work are that C.R.E. 3rd Division (Col. Clogstoun) will be placed at the disposal of 2nd Division for organising and designing defences and arranging for carrying out the work. The support Brigade (6th A.I.Bde.) will do the work and the brigadier will be responsible that the work for that brigade is done. No definite instructions were given regarding engineer personnel to be used for supervision of work. May arrange to lend portion of 6th Field Company for this purpose.	
	14th		Total pipe burying completed to last night was about 25,000 yards; still about 13,000 yards to complete. This work was handed over to 3rd Division yesterday.	
	15th		Visited C.R.E. 3rd Division with a view to getting definite and concise information as to work in hand in the area we are to take over, but did not get anything very satisfactory.	
	16th		Divl. H.Q. moved to STEENWERCK, took over from 3rd Division. C.R.E. office and billets in the Rue de l'Hospice. C.O. 2nd Pioneer Battalion came here, and the work on which Pioneers are to be employed was discussed. Two companies will be allotted, one to each forward brigade area for maintenance and improvement to C.T's., in direct touch with Brigade staff.	

Confidential

Original

WAR DIARY

Sheet 2.

Army Form C. 2118

80

December 1917.

Instructions regarding War Diaries and Intelligence Summaries are contained in F. S. Regs., Part II. and the Staff Manual respectively. Title Pages will be prepared in manuscript.

INTELLIGENCE SUMMARY

(Erase heading not required.)

H.Q. DIVISIONAL ENGINEERS
2nd Australian Division

Place	Date	Hour	Summary of Events and Information	Remarks and references to Appendices
RAVELSBERG & STEENWERCK	16th	Contd.	<p>One company will be employed on maintenance, improvement and extension of Div. tramways, and remaining company on roads and drainage. Area very large and very much work required to improve trenches by revetting, duckboarding and draining, and also in some cases to extend and open up further trenches.</p> <p>5th Field Company engaged in front line trench improvement and minor drainage channels in their Brigade area, on right, in co-operation with 5th A.I.Bde. 7th Field Co. similarly employed on the the left. 6th Field Co. in reserve, also doing some drainage, salvage work and work on Field Artillery gun-pits, besides a certain proportion started work on Corps Defence line.</p> <p>The improvement of front line and forward area defences, erection of wiring and establishment of definite system of firing line, support and reserve, is to be energetically pushed on. Also the construction of Corps Defence Zone firing ^{sub-line} line and reserve line is being pressed as urgent. Front is about 7,000 yards in length. Portion of it is protected by the River LYS. We do not however hold the actual bank of the stream, but patrolling is done between our front line and the near bank of the river. Front area very exposed to view by the enemy, so that work in exposed positions is not possible except at night or in misty weather.</p>	
STEENWERCK	17th		<p>With Lt. Col. Clogstoun, visited various field company camps, and called at 6th Bde. Hdqrs. and discussed arrangements for work on Corps Defence Zone.</p> <p>The general principle adopted is that 6th Field Coy. will be made available as far as possible to assist 6th A.I.Bde. in construction of work.</p> <p>On return to Hdqrs. in afternoon found that orders were out that D.H.Q. would ^{move} back to RAVELSBERG the following day; 3rd Australian Division is moving back to STEENWERCK. This sudden and unexpected move was due to the fact that the 3rd Aust. Div. have to take over a portion of front immediately south of us, around ARMENTIERES. Believe this is due to withdrawal of Portugese troops further south.</p>	<p><i>move</i></p> <p><i>move</i></p>
STEENWERCK & RAVELSBERG	18th		<p>Weather turned cold last night, freezing hard, with biting wind. Divisional Headquarters moved to RAVELSBERG 10 a.m. this morning.</p>	
	19th		<p>Visited 6th Bde. H.Q., met Major Harris and Col. Clogstoun, and discussed policy for work on Corps line. Conference at D.H.Q. in afternoon, presided over by General BIRDWOOD, attended by G.O.C. Diva, Cs.R.E., Cs.R.A., G.SsOs. 1. Corps Commander indicated that defence works which had to be carried out must be pushed on energetically in view of the possibility of the enemy taking the offensive now, with the help of reinforcements available from the Russian front.</p>	
	21st		<p>Weather still freezing.</p> <p>Made a tour of left brigade trenches with Major WEBB. Visited front line posts, support line and some of the C.T.s. Foggy day and quiet. Captain COGHLAN, 6th Field Coy., detailed to proceed to Field Company Commanders' and Second's in Command, school at BLENDECQUES for three weeks, commencing 29th. Great deal of wiring being done both in forward area and Corps Line.</p>	<p><i>move</i></p> <p>2</p>

WAR DIARY

December 1917.

Army Form C. 2118

Instructions regarding War Diaries and Intelligence Summaries are contained in F. S. Regs., Part II. and the Staff Manual respectively. Title Pages will be prepared in manuscript.

INTELLIGENCE SUMMARY

(Erase heading not required.)

H.Q. DIVISIONAL ENGINEERS
2nd Australian Division

Place	Date	Hour	Summary of Events and Information	Remarks and references to Appendices
RAVELSBERG	22nd		Weekly conference of Field Company Commanders and C.O. Pioneer Battalion, held at C.R.E. office to discuss work in progress and proposed. Works in progress generally discussed.	
	23rd		Visited STEENWERCK Divisional laundry with Captain WADDELL to inspect drying room, which is unsatisfactory, and water-heating plant at ^{Papoo} Baths.	
	24th		Went again to STEENWERCK laundry with Lt. Col. ANNAND, 2nd Pioneers, to arrange for alterations to be made to drying room. Propose to alter drying room so as to provide for definite system of supply of fresh air and exhausting saturated air, by building in air pipes in brick stove which supplies heat, and by fixing an outer flue around the flue of the stove, in order to induce an out-draught. Small drying rooms will have stoves, which are at present exterior, built inside and fired from outside. The old flues which passed through the floor will be abandoned and fresh flues above the floor will be installed. (Plan appendix in original only)	
	25th		XMAS day. Raining, snowing, sleeting and blowing. Country covered with several inches of snow.	
	27th		Went out to right Bde. front line with Major REID, 5th Field Co. and Capt. BURNELL. Went up Station Avenue, Long Avenue to Una Avenue Alley, along this to Una Avenue and Una Lane, along new support trench (under construction) in extension of Umpire Support, along Umpire Support, Suffolk and Nicholson Avenues, back to starting point at Motor Car Corner. Trenches generally in need of revetting and draining. Some of them have been dug for a considerable period and are not at all in a good state; require much work to be made good. Have not been much knocked about by shell fire as a rule. Drainage, in this flat country, one of the chief difficulties. Trenches all appear to be very lightly held. Weather still freezing.	Jm e
	29th		6th Field Co. now almost entirely employed on Corps Defence line, working with 6th Brigade. A great deal of wiring is being done in this zone, and accommodation cleared. Corps Zone being organised in three lines, firing line, support and reserve. Work concentrated chiefly on wiring at present. Considerable shortage in supply of screw pickets. Have arranged for artillery work to be done by allotting about a dozen sappers with a couple of N.C.Os. to Captain WAGSTAFF who is working with Divl. Artillery. They will supervise and lay out work and generally assist gunners in construction of most of the works required by them.	
	30th		Visited STEENWERCK laundry to see progress. Work hampered by lack of material. 66th Field Company have erected and repaired 13,500 yards of wiring wire entanglement in Corps line during last week. Captain J.G. BURNELL, 5th Field Co. has been selected as field company officer from this Corps for 10 days tour with French Engineer units, and he will submit a report on his return. Went to HYDE PARK CORNER with Captain Waddell with view to decide on site for new baths to be built near there.	

WAR DIARY

December 1917.

or

INTELLIGENCE SUMMARY

(Erase heading not required.)

Instructions regarding War Diaries and Intelligence Summaries are contained in F. S. Regs., Part II. and the Staff Manual respectively. Title Pages will be prepared in manuscript.

H.Q. DIVISIONAL ENGINEERS
2nd Australian Division

Place	Date	Hour	Summary of Events and Information	Remarks and references to Appendices
RAVELSBERG	31st		<p>Made tour of the southern half of the Corps Defence Zone, with Major Harris, from southern boundary, near River LYS to PLOEGSTEERT WOOD and ULTIMO Avenue. Weather still very cold and ground still freezing.</p> <p style="text-align: right;"><i>J. C. Catlett</i></p> <p style="text-align: right;">Lt. Colonel, C.R.E. Second Australian Division.</p>	<p><i>quice</i></p>

APPENDIX. 1.

*****SECRET*****

Copy No.....

9

SECOND AUSTRALIAN DIVISIONDivisional Engineer Order No. 29. December 11th 1917.

1. The Field Companies of 2nd Australian Division will relieve the Field Companies of 3rd Australian Division, reliefs to be complete by 10 a.m. 16th December.
2. The 5th Field Company will relieve the 9th Field Company in the Right Brigade Sector.
3. The 7th Field Company will relieve the 10th Field Company in the Left Brigade Sector.
4. The 6th Field Company will relieve the 11th Field Company.
5. Field Company Commanders will arrange to get in touch with the Field Company Commanders of the 3rd Australian Division whom they are to relieve as early as possible.
6. The 2nd Australian Pioneer Battalion will relieve the 3rd Australian Pioneer Battalion on 14th December. Reliefs will be carried out direct between C.O.'s concerned.
7. Field Company Commanders and C.O. Pioneer Battalion will notify this office by wire on completion of relief stating location.
8. ACKNOWLEDGE.

H. S. Harris Lt. & Adjt.,
for C.R.E. Second Australian Division.

DISTRIBUTION.

1. C.E. 1st Anzac.
2. "C" 2nd Aust. Division.
3. C.R.E. 3rd Aust. Division.
4. 5th Field Coy.
5. 6th " "
6. 7th " "
7. 2nd Pioneer Battalion.
8. File
9. 10. 11 War Diary. ✓

PIPE - LINE BURYING

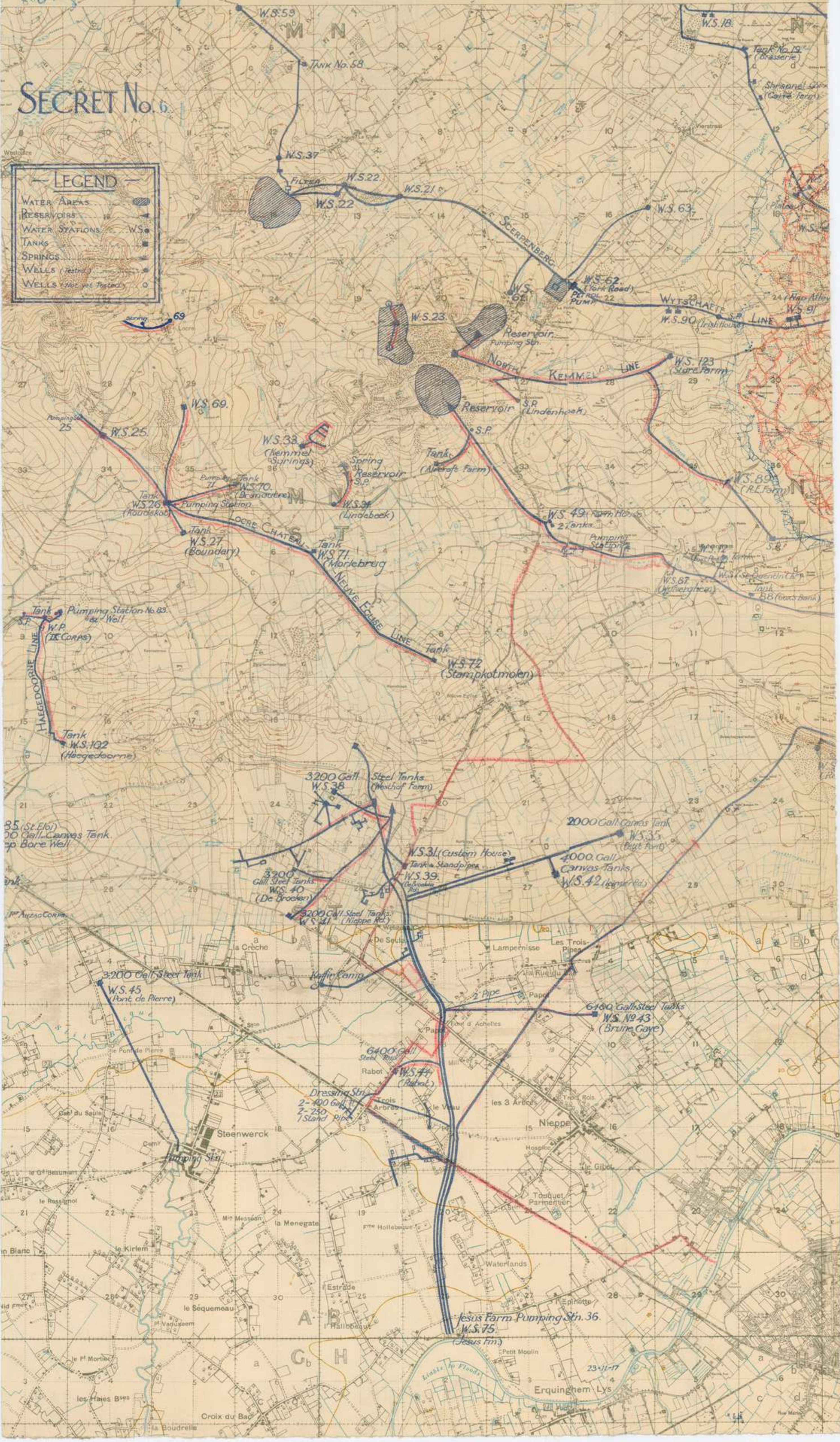
War Diary Dec 1917

Original only

SECRET No. 6

LEGEND

- WATER AREAS
- RESERVOIRS
- WATER STATIONS W.S.
- TANKS
- SPRINGS
- WELLS (water)
- WELLS (not yet tested)



Four à coke - Coke oven.
 Ganterie - Glove factory.
 Gare - Station.
 Garenne - Warren.
 Garnison - Garrison.
 Gasconière - Gasconier.
 Glaçerie - Mirror factory.
 Fab' de glaces - Ice factory.
 Glaçière - Crane.
 Grue - Ford.
 Gué - Sentry-box, Turret.
 Gué à signaux - Signal-box (Ry.)
 Halle - Hall.
 Hangar - Shed, Hangar.
 Hôpital - Hospital.
 Hôtel-de-Ville - Town hall.
 Houillère - Colliery.
 Huilerie - Oil factory.
 Imprimerie, Imp^{re} - Printing works.
 Jetée - Pier.
 Laminerie - Rolling mills.
 Ligne de haute marée - High water mark.
 Ligne de basse marée - Low
 Maison Forestière - Forester's house.
 M^{re} P^{re} - Malt-house.
 Malterie - Malt-house.
 Marbrerie - Marble works.
 Marais - Marsh.
 Marais salant - Saltern.
 Marché - Market.
 Mare - Pool.
 Meule - Rick.
 Mine - Mine.
 Monastère - Monastery.
 Moulin, M^{re} - Mill.
 à vapeur - Steam mill.
 Mur - Wall.
 cristallé - Loop-holed wall.

Nacelle - Ferry.
 Orme - Elm.
 Orphelinat - Orphanage.
 Osierier - Osier-beds.
 Ouvrage - Fort.
 Ouvrages hydrauliques - Water works.
 Papeterie - Paper-mill.
 Parc - Park, yard.
 Paroissiale - Aviation ground.
 - adriatique - Coal yard.
 - à charbon - Coal yard.
 - à pétrole - Petrol store.
 Passage à niveau P.N. - Level-crossing.
 Passerelle, Pas^{se} - Foot-bridge.
 Pépinière - Nursery-garden.
 Peuplier - Poplar tree.
 Phare - Light-house.
 Plier, Pl^{ier} - Post.
 Plaine d'exercice - Drill ground.
 Pompe - Pump.
 Ponceau - Culvert.
 Pont - Bridge.
 - levé - Draw-bridge.
 Poste - Post.
 - de garde - Coast-guard station.
 Station - Station.
 Poteau P^{re} - Post.
 Poterie - Pottery.
 Poudrière, Poud^{re} - Powder magazine.
 Magasin à poudre - Powder magazine.
 Prise d'eau - Water supply.
 Puits - Pit-head, Shaft, Well.
 - artésien - Artesian well.
 - d'aérage - Ventilating shaft.
 - ventilateur - Ventilating shaft.
 - de sondage - Boring.
 Quai - Quay, Platform.
 - aux bestiaux - Cattle platform.
 - aux marchandises - Goods platform.
 - des diligences - Goods platform.
 Raccordement - Junction.
 Raffinerie - Refinery.
 - de sucre - Sugar refinery.
 Râpe - Beet-root factory.

Remise - Embankment.
 Remise des Machines - Engine-shed.
 Réservoir - Reservoir.
 Route cavalière - Bridle road.
 Rubanerie - Ribbon factory.
 Ruine - Ruin.
 En ruine - Ruin.
 Sablière - Sand-pit.
 Sablonnière, Sablon^{re} - Fir tree.
 Sapin - Fir tree.
 Saule - Willow tree.
 Scierie - Saw-mill.
 Scierie, Sc^{ie} - Saw-mill.
 Sondage - Boring.
 Source - Spring.
 Sucrerie, Suc^{re} - Sugar factory.
 Tannerie - Tannery.
 Tir à la cible - Rifle range.
 Tissage - Weaving mill.
 Tissage - Weaving mill.
 Tombéau - Tomb.
 Tour - Tower.
 Tourbière - Peat-bog, Peat-bed.
 Tourrelle - Small tower.
 Tuilerie - Tile works.
 Usine à gaz - Gas works.
 - électrique - Electricity works.
 - d'électricité - Electricity works.
 - métallurgique - Metal works.
 - à agglomérés - Briquette factory.
 Verrerie, Verr^{re} - Glass works.
 Viaduc - Viaduct.
 Vivier - Fish Pond.
 Voie de chargement - Siding.
 - de déchargement - Siding.
 - d'évitement - Siding.
 - formation - Siding.
 - manœuvre - Siding.
 Zinguerie - Zinc works.

Ligne de haute marée - High water mark.
 Ligne de basse marée - Low
 Maison Forestière - Forester's house.
 M^{re} P^{re} - Malt-house.
 Malterie - Malt-house.
 Marbrerie - Marble works.
 Marais - Marsh.
 Marais salant - Saltern.
 Marché - Market.
 Mare - Pool.
 Meule - Rick.
 Mine - Mine.
 Monastère - Monastery.
 Moulin, M^{re} - Mill.
 à vapeur - Steam mill.
 Mur - Wall.
 cristallé - Loop-holed wall.

Poteau P^{re} - Post.
 Poterie - Pottery.
 Poudrière, Poud^{re} - Powder magazine.
 Magasin à poudre - Powder magazine.
 Prise d'eau - Water supply.
 Puits - Pit-head, Shaft, Well.
 - artésien - Artesian well.
 - d'aérage - Ventilating shaft.
 - ventilateur - Ventilating shaft.
 - de sondage - Boring.
 Quai - Quay, Platform.
 - aux bestiaux - Cattle platform.
 - aux marchandises - Goods platform.
 - des diligences - Goods platform.
 Raccordement - Junction.
 Raffinerie - Refinery.
 - de sucre - Sugar refinery.
 Râpe - Beet-root factory.

Tourrelle - Small tower.
 Tuilerie - Tile works.
 Usine à gaz - Gas works.
 - électrique - Electricity works.
 - d'électricité - Electricity works.
 - métallurgique - Metal works.
 - à agglomérés - Briquette factory.
 Verrerie, Verr^{re} - Glass works.
 Viaduc - Viaduct.
 Vivier - Fish Pond.
 Voie de chargement - Siding.
 - de déchargement - Siding.
 - d'évitement - Siding.
 - formation - Siding.
 - manœuvre - Siding.
 Zinguerie - Zinc works.

80

80
Appendix 3
Original

Headquarters,
2nd Aust. Div. Engineers.
16/12/17.

HANDLING OVER REPORT.

1. PIPE BURYING WORK.
About 13000 yards remains to be completed. Maps and material and particulars of work have been handed over to Lieut. MOORE, 3rd. Divisional Engineers.
2. PALMER BATHS.
Work consists of remodelling dry room and minor repairs, particulars of which have been handed over to relieving Field Company.
3. Acetylene Gas Plant for D.R.S., BAILLEUL. Nothing has been done in this matter.
4. Reconnaissance of STILBECQUE near STERNWERCK. Reconnaissance of HELLEBEKE from M.24.d.1.2. to junction with LA DOUVE at T.1.a.2.3.
Reports herewith on work required to be carried out.
5. Copy of Defence scheme and map.
6. Ironing rooms for Field Ambulances. Nothing has been done in this matter.
7. Erecting splinter proof wall round huts at D.H.Q.

R. H. Harris Lt. & Adjt.,
for C.R.E. Second Australian Division.

80
 "G" 2nd Australian Division.
 "Q" " " "
 5th 6th 7th A.I. Brigades
 5th 6th 7th Field Coy. Engrs.
 2nd Pioneer Battalion.

Appendix 4
Original



 Captain NEEDHAM, 2nd Pioneer Battalion, is the Divisional
 Tramways Maintenance Officer.

He will be responsible for maintenance and improvement of
 all main line tramways, and for such extensions as may be ordered.

Captain LEVIEN, 2nd Pioneer Battalion, is in charge
 maintaining and improving roads, which are a divisional responsibility.

Both of these officers can if necessary be communicated with
 by telephone to 2nd Pioneer Battalion H.Q.

Normally one company of Pioneers is allotted for tramway
 work. C.O. 2nd Pioneers makes provision for the labour for roads
 according to requirements.

McClellan

25/12/17.

Lt. Colonel,
 G.R.E. Second Australian Division.

80

SECOND AUSTRALIAN DIVISION.

*Appendix 5
Original*



Engineer Headquarters,
January 10th 1918.

Some notes on DRYING ROOMS for LAUNDRIES.

Prime essentials for securing good drying effect in drying rooms are :-

1. Heating of air in the room so that its evaporative capacity is increased and the moisture in clothes is converted into vapour in suspension in air. When saturated the air ceases to take up further moisture and must be removed and replaced by dry air.
2. Provision for removal of saturated air and replacement by comparatively dry air.
3. To secure (1) it is necessary to prevent as far as possible loss of heat from the drying chamber by radiation or air leakage; to secure (2) leakage of air both inwards and outwards through walls, doors etc., must be prevented and in draught of fresh air and exhaust of saturated air must be provided for on a definite system.

NOTES ON EXISTING TYPES.

Para (1). All drying chambers provide for the heating effect noted in para. (1), the source of heat and method of applying it varying.

Para (2). The requirements of para 2 are those which are most generally overlooked, or not provided for on a definite and rational system.

Frequently rooms are provided with heating arrangements and efforts are made to seal up all outlet so that stagnation results when saturation point ^{of air} is reached except insofar as leakage of air in and out takes place through crevices. In others "ventilators" are provided in the roof with the intention that heated moist air may escape thereby, but no provision is made for fresh air to be brought in. There is no guarantee that the moist air does go out and no proper circulation results. In some cases power driven fans have been installed to exhaust the air and no provision made for a definite air supply. The result in this case is that air to replace that exhausted by the fan is drawn in through the crevices nearest to the fan, in fact round the periphery of the fan itself so that no general flow through the drying room is obtained.

Para (3) Frequently drying rooms are constructed of corrugated iron without lining or ceiling. A great loss of heat by radiation results. Others made of rough boarding permit leakage of air both in and out so that heat is lost by hot air leaking out before it has performed its function of evaporating moisture and the general leakage makes the establishment and control of a general draught through the room impossible. The lack of a ceiling apart from anything else results in the necessity for heating a larger volume of air than is necessary and so it is wasteful of heat.

The principal point in the attached design is that an effort is made to comply with the principle enumerated in para (2) above, i.e. provision for withdrawal of saturated air and supply of fresh air on a definite and rational system.

The method of air supply is simply as follows :-

Pipes are carried through the firebox of the brick heating stove with one end outside the drying room and the other end inside and continued to a vertical height of about 2 feet about the level of the outer ends. The air in these pipes is heated by the fire and rises through the elevated end causing a flow of air

80

into the drying room. Incidentally too this air is more or less warmed during passage through the pipes. The hood fitted over the inlet end of pipes ensures that air is drawn from in front of fire door and so probably slightly warm and dry. A regulator for checking the flow of air may be fitted either internally or externally.

The method of inducing an exhaust draught from drying room consists in placing an outer sleeve round ~~at~~ the vertical furnace flue at the end remote from the stove. This is carried up from ceiling to and through the roof. The warmth of the flue tends to induce an upward current and so to draw air from the drying room from the end of the room furthest from the fresh air supply. A regulator may also be applied to exhaust.

It will be noted that the method of securing in draught and out draught are mutually independent, e.g., the supply of fresh air would continue even if the exhaust were not operating, provided that there were some other opening through which air could escape from the room, and vice versa.

A modification of the in draught contrivance consists of fitting a sheet iron rectangular flue on top of the brickwork of the stove with inlet end outside over fire door and an outlet end elevated about inlet as before. Air in flue in this case heated by radiation through the brickwork.

This system of air circulation has been applied to existing drying rooms at LA CRECHE, STEENWERCK and has effected a considerable improvement on previously existing conditions. Both modifications of the system of inducing in draught mentioned above have been tried with good results.

GENERAL.

Much loss of efficiency is caused by frequent opening of doors leading into drying rooms. This should be avoided as far as possible. The provision of a porch and double doors ~~will~~ would reduce effect. Porch and outer door need only be of light construction, such as timber covered by tarred felt.

As far as possible endeavours should be made to work drying in batches; the room filled up and then kept closed until the whole batch is dry.

Windows should be of glass, as oiled linen becomes opaque owing to drying out of oil and quickly rots. A system of drying racks should be arranged to suit particular circumstances.

Floor is best of concrete but could be of cinders or wood provided that there is no leakage under walls. Walls should always be carefully lined with close jointed wood and insulation such as sawdust is desirable as tending both to prevent heat radiation and air leakage. If sawdust insulation is used thin sheet ~~of~~ corrugated iron could be used for lining. T. and G. ceiling if covered with tarred felt should prove pretty tight as the warmth will cause the felt to soften and lie flat.

By building a brick stove inside the room and fired from outside full advantage is taken of the heat radiated from the brickwork.

Flues and heated brickwork should always be protected so that clothing can not come in contact and so become ignited.

Laundry staff should understand principles on which drying is effected.

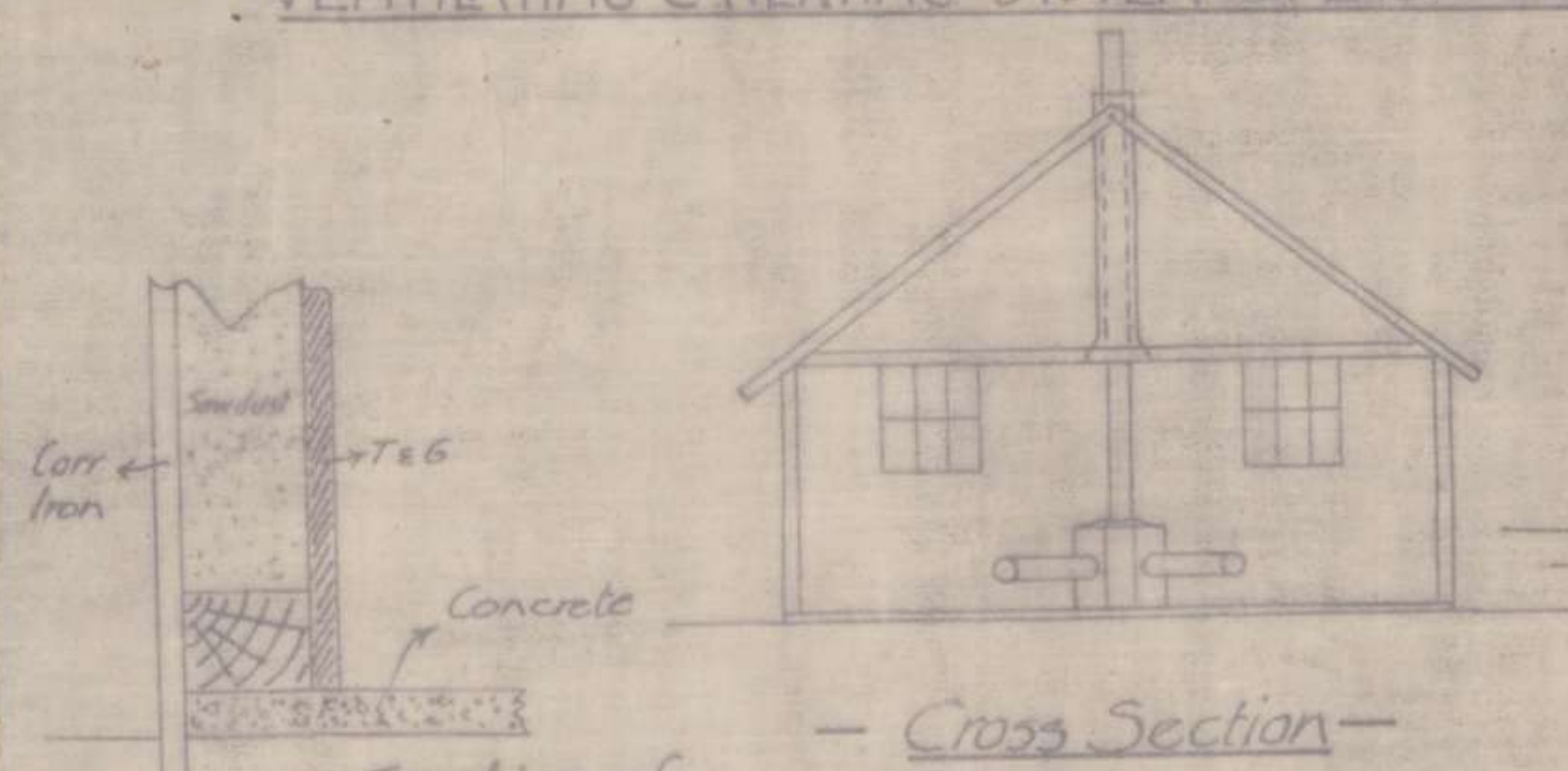
McClorlette

Lt. Colonel,

C.R.E. Second Australian Division.

Attached one plan.

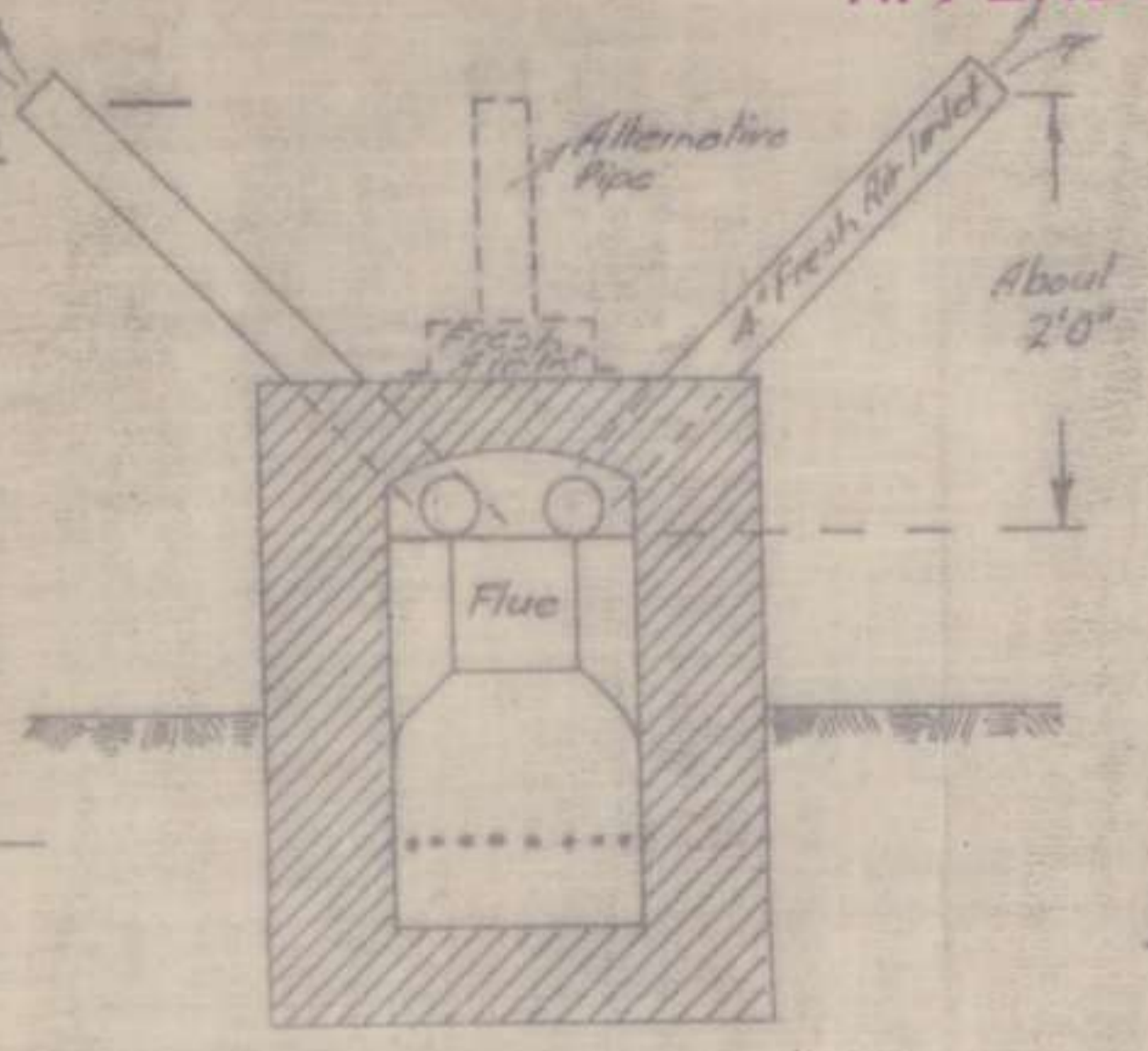
VENTILATING & HEATING SYSTEM FOR LAUNDRY DRYING ROOM



Section of Floor

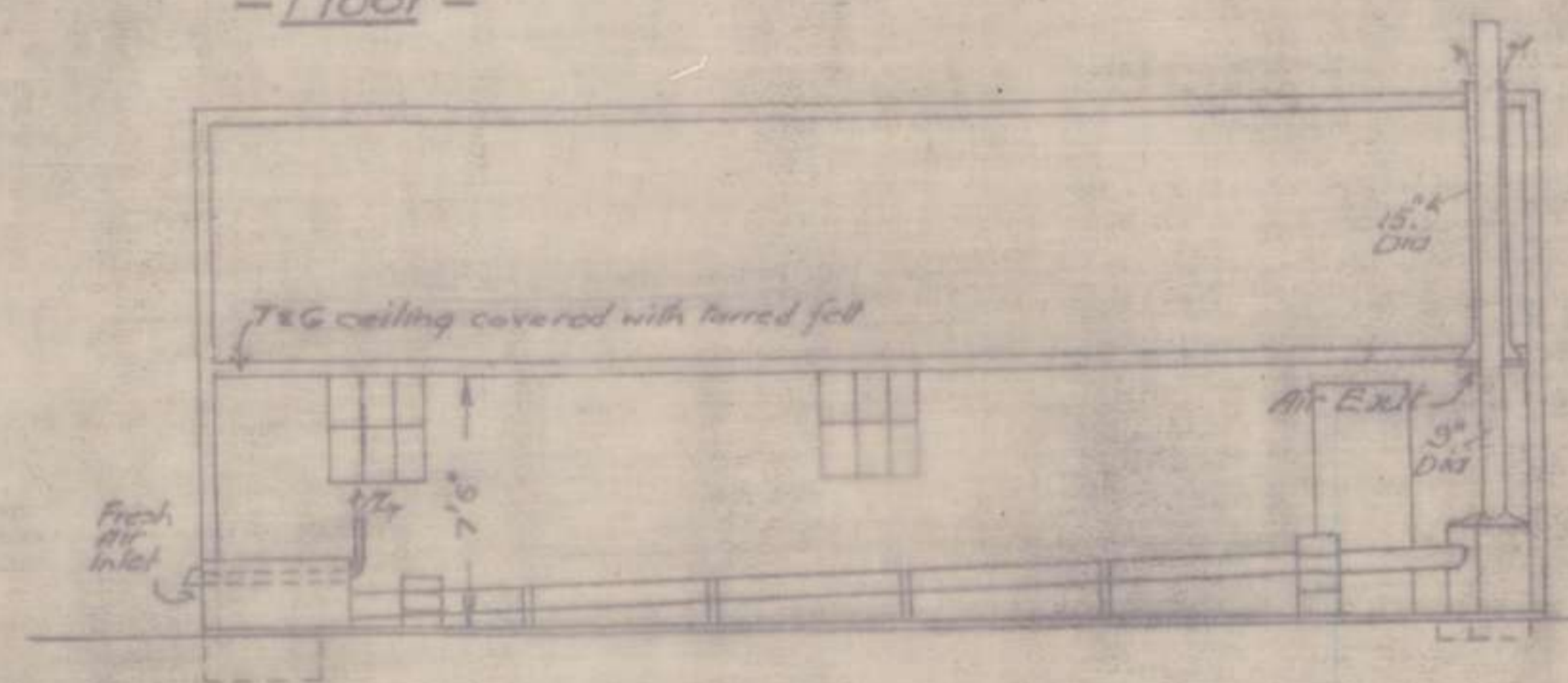
Cross Section

STOVE FOR DRYING ROOM

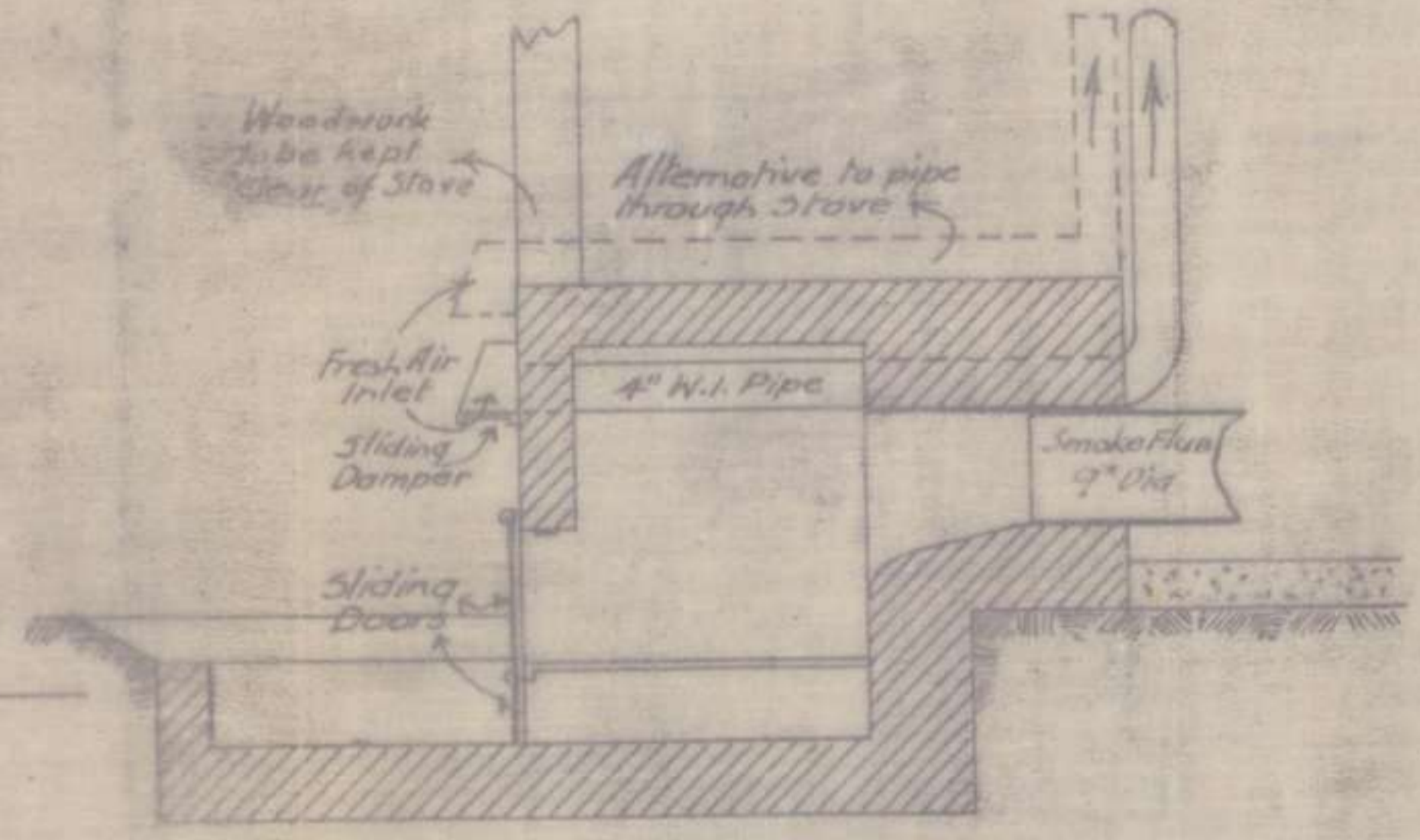


Cross Section

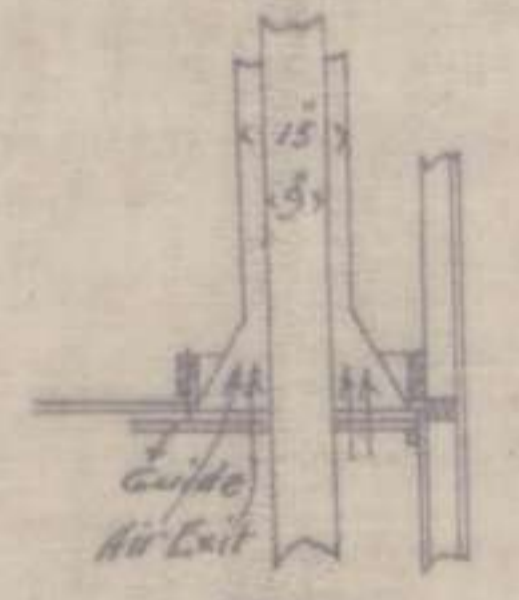
Damper in Ceiling



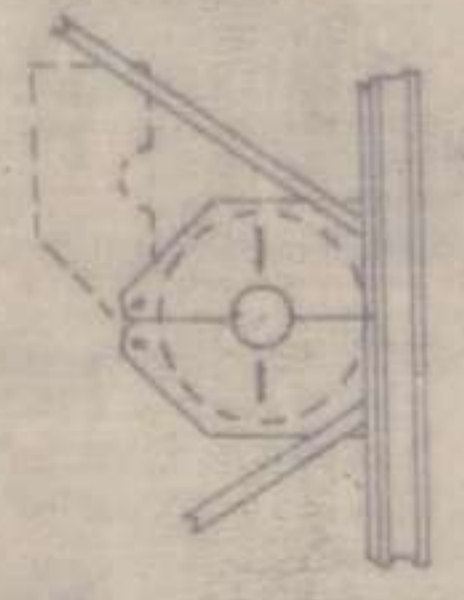
Long Section



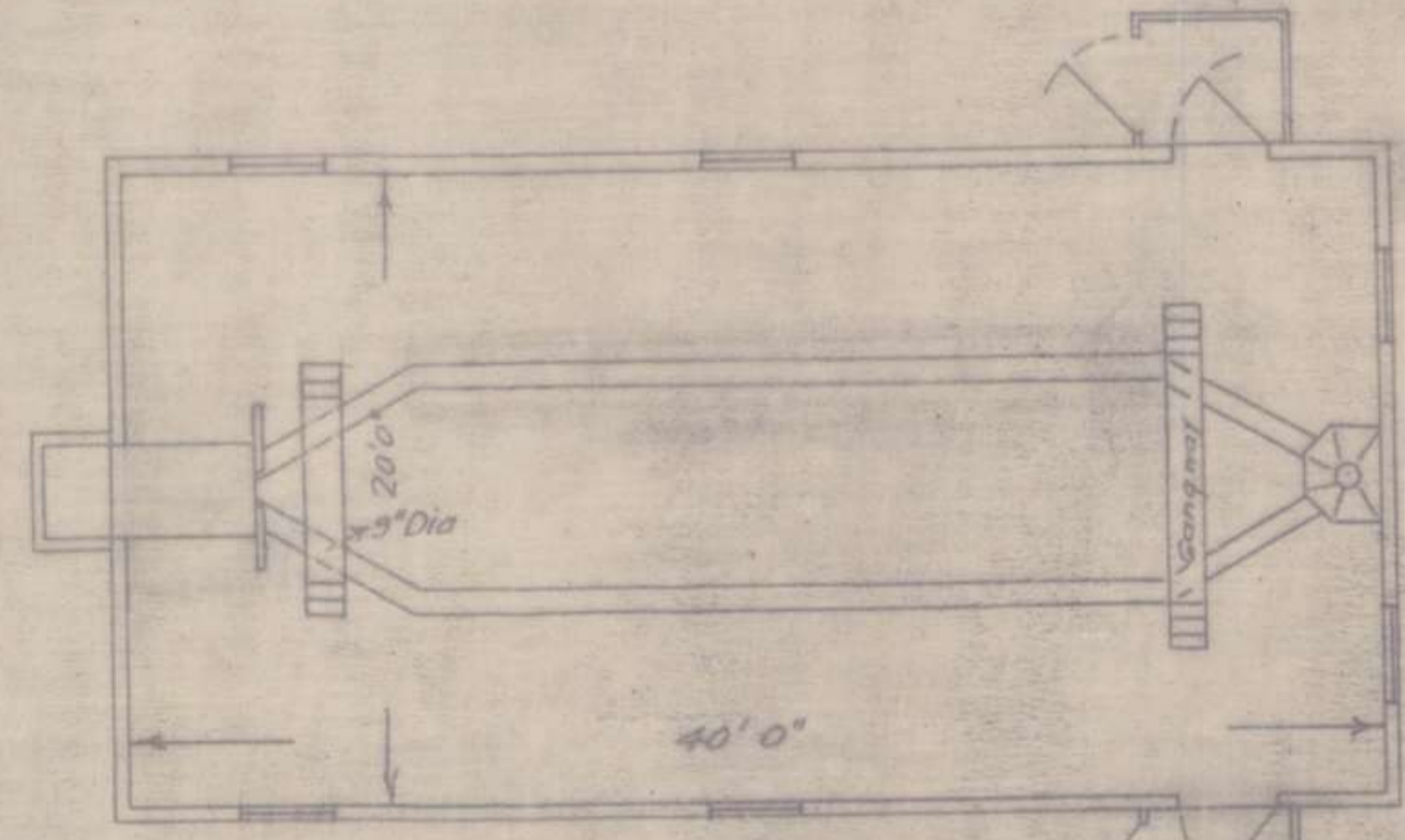
Long Section



Section

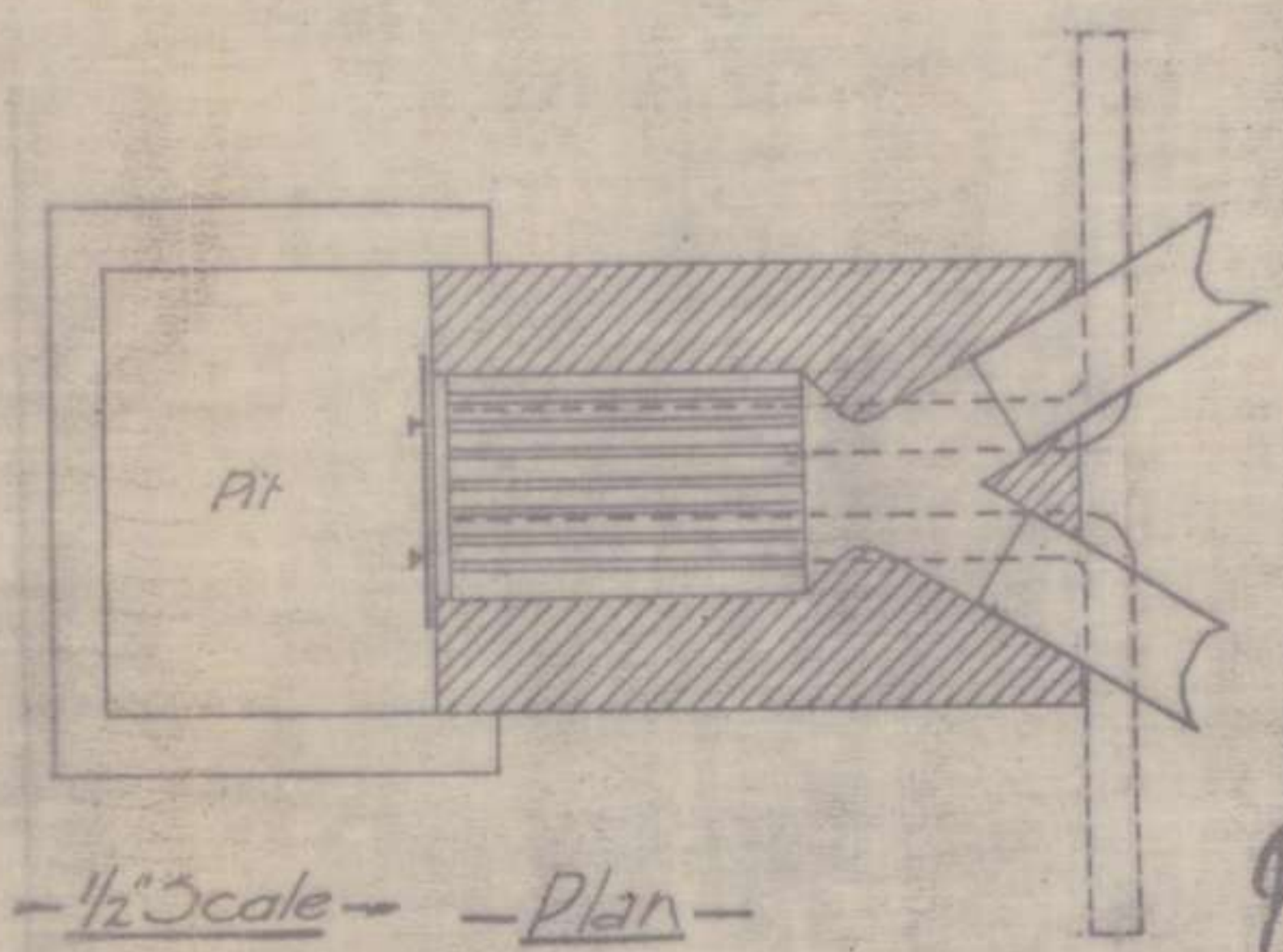


Plan looking up 1/4" scale



1/8" scale

Plan



1/2" scale

Plan

McCortella & Co.

CRE 2nd Aust Div 11.1.18