

AWM4
Australian Imperial Force unit war diaries,
1914-18 War

Infantry

Item number: 23/15/22

Title: 15th Infantry Brigade

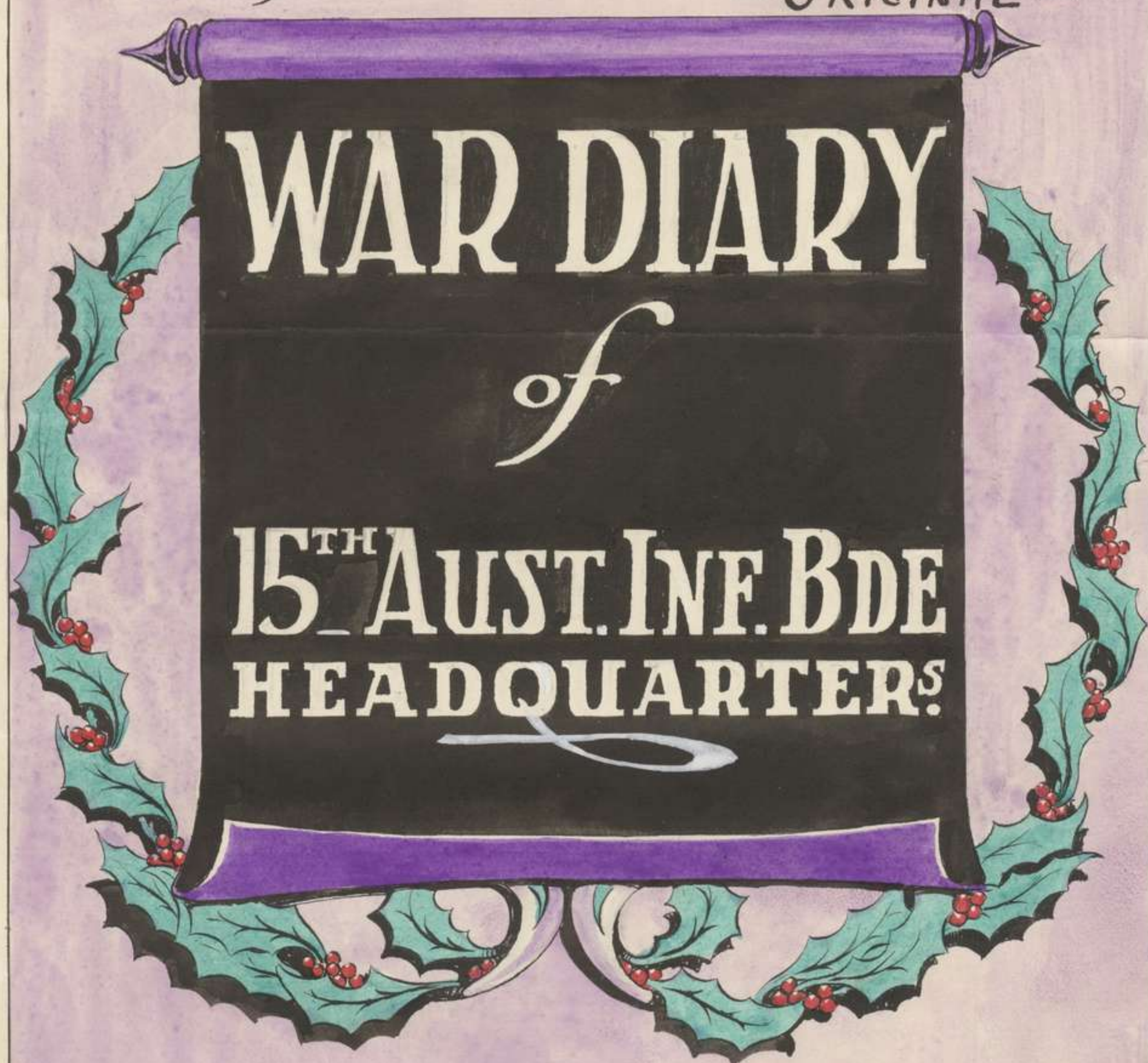
December 1917



AWM4-23/15/22

265

Confidential - Triplicate
- ORIGINAL -



VOL. 12.

from 1st Dec. to 31st 17.

Prepared by
J. S. Anderson. Major

WAR DIARY

Army Form C. 2118.

205

Instructions regarding War Diaries and Intelligence Summaries are contained in F. S. Regs., Par. II, and the Staff Manual respectively. Title pages will be prepared in manuscript.

INTELLIGENCE SUMMARY.

Page 1

Volume XVI

(Erase heading not required.)

Place	Date	Hour	Summary of Events and Information	Remarks and references to Appendices
Sheet 28 N. 29. C. 4. 4. EGENT TUGOUTS	December	1 ST	<p>at 1.0 AM. the second raid of the 3rd Australia Division was carried out. Contrary to expectations the enemy did not retaliate and we were able to carry on with improvements to the sector. During the morning the Brigade Major and Intelligence Officer went to 58th Bn Hd Qs. MAJOR-GENERAL HOBBS (Divisional Commander), MAJOR-GENERAL C.B.B. WHITE (B.G.G.S. 15th ANZAC CORPS) and the Brigadier went to the forward area during the day and visited the Artillery Observer Post at WYTSCHAETE the Brigade O.P. at MAHIEU FARM and the Headquarters of the 58th and 60th Battalions. Rest of the day and night uneventful. Intelligence Summary No 222 is attached as APPENDIX 1. Casualties to date 59th Battalion 7 other ranks and 58th Battalion 1 other rank wounded.</p>	APPENDIX 1 JH
		2 ND	<p>Brigade Major went to 58th Battalion Headquarters and with CO 58th Battalion made a thorough reconnaissance of OOSTTAVERNE woods with a view to placing a Company there. Several pill-boxes were found & the Sappers were already at work pumping them out. They were nearly all water-logged but there is ample room for a Company in the woods. The Brigadier</p>	

WAR DIARY

Army Form C. 2118.

Instructions regarding War Diaries and Intelligence Summaries are contained in F. S. Regs., Par. II. and the Staff Manual respectively. Title pages will be prepared in manuscript.

INTELLIGENCE SUMMARY.

(Erase heading not required.)

Page 2

Volume VII

Place	Date	Hour	Summary of Events and Information	Remarks and references to Appendices
Sheet 28 N.29.C.44 REGENT DUGOUTS	December 2 nd		visited the 57 th Battalion during the afternoon. In accordance with instructions received from D.H.Q. an order was issued (appendix 2) for the precautionary measures to be taken against a bombardment of the enemies defences by the Heavy Artillery. The night was uneventful.	APPENDIX 2
			Intelligence Summary No 3 is attached (appendix 3)	APPENDIX 3.
	3 rd		The Divisional Commander, G.S.O. 2 nd C.R.A. (Brigadier General BESSEL-BROWN C.M.G. D.S.O.), called at Brigade Headquarters to discuss the bombardment by the Heavy Artillery which is to take place tomorrow. It is fairly certain that one of the bombarded localities will have to be raided. During the morning the Brigadier and MAJOR BACHTOLD D.S.O. M.C. (Op 14 Field Company P.E.) visited the 60 th Battalion area and inspected OLGA TRENCH. In the afternoon the Brigadier Major and I.O. visited 58 th and 60 th Battalions, and the bombardment was discussed. Orders were issued for minor detail in regard to the bombardment during the afternoon (appendix 4). Strength return for 1 st inst attached (appendix 5). Night was quiet and improvements to the sector carried out. Intelligence Summary No 4 attached (appendix 6).	APPENDIX 4. 5. APPENDIX 6

A6945 Wt. W11422/M1160 350,000 12/16 D. D. & L. Forms/C./2118/14.

WAR DIARY

Army Form C. 2118.

Instructions regarding War Diaries and Intelligence Summaries are contained in F. S. Regs., Part II. and the Staff Manual respectively. Title pages will be prepared in manuscript.

or
INTELLIGENCE SUMMARY.

(Erase heading not required.)

Page 3

Volume VII

Place	Date	Hour	Summary of Events and Information	Remarks and references to Appendices
Sheet 28. N.27.C.4.4. REGENT DUGOUTS	December 4 th		<p>The withdrawal of the garrisons in connection with the bombardment was successful carried out and though visibility was poor in the early part of the morning it improved considerably during the day. Fuel reports of the shooting are not yet to hand. During the morning the Brigade Major and G.S.O 2 (Major KING) visited 57th - 58th and 60th Battalions and discussed the theory of the defence of the sector with the former. In the afternoon the Brigadier went to 57th Battalion. Intelligence Summary No. 5 is attached (Appendix 7). The night was quiet and active patrolling was carried out along the front.</p>	<p>APPENDIX 7</p>
	5 th		<p>In the morning the Corps Commander (GENERAL Sir W.R. BIRDWOOD K.C.B. K.C.S.I. K.C.M.G. C.I.E. D.S.O. A.D.C.) Divisional Commander and Brigadier visited all the Battalion Headquarters. Preparations were made with the Artillery for a further bombardment of strong points tomorrow (Appendix 8). Brigade Major + I.O. visited 58th and 60th Battalions in the afternoon. Night was quiet though there was heavy shelling for a while to the south of the Divisional Sector. During the day enemy airmen</p>	<p>APPENDIX 8</p>

WAR DIARY

Army Form C. 2118. 265

Instructions regarding War Diaries and Intelligence Summaries are contained in F. S. Regs., Part II. and the Staff Manual respectively. Title pages will be prepared in manuscript.

INTELLIGENCE SUMMARY.

(Erase heading not required.)

Page 4

Volume VII

Place	Date	Hour	Summary of Events and Information	Remarks and references to Appendices
Sheet 28 N. 29-C. 4. 4. REGENT DOGOUTS	December			
	5 th		dropped various propaganda papers over our lines in the form of <i>Le Journal des Ardennes</i> late in the evening GENERAL ELLIOTT rejoined from hospital and Colonel MASON rejoined the 57 th Battalion Intelligence Summary No 6 attached (Appendix 9)	APPENDIX 9
	6 th		Day fine and quiet. Brigade Major visited 57 th and 58 th Battalion sections during the morning. The Heavy Artillery carried out the bombardment of FLY BUILDINGS - JULY FARM and RIFLE FARM. Weather was not good for observation Lt-Colonel STEWART is staying on at Brigade Headquarters for a few days until the Brigadier has had a look round. During the 3 rd and 4 th night there were no casualties on the 5 th one O/R killed and 2 O/R wounded (at date). Today Intelligence Summary No 7 is attached (Appendix 10)	APPENDIX 10
	7 th		The night was quiet Early this morning a prisoner wandered into our lines at 0.23. A. (60 th BN section). He belonged to the 93 rd B.L.R. of the 8 th Division (normal identification). Day very quiet. Brigadier visited all Battalion Headquarters during the day. The Divisional Commander called at Bde HQ during the afternoon.	

WAR DIARY

Army Form C. 2118.

255

Instructions regarding War Diaries and Intelligence Summaries are contained in F. S. Regs., Part II. and the Staff Manual respectively. Title pages will be prepared in manuscript.

INTELLIGENCE SUMMARY.

(Erase heading not required.)

Page 5

Volume VII

Place	Date	Hour	Summary of Events and Information	Remarks and references to Appendices
Sheet 28 N. 29. C. 44 REGENT DUGOUTS	December			
	7 th		The G.S.O 2 (MAJOR D.M. KING D.S.O. M.C.) also called at Brigade Headquarters. He is leaving the Division today to go to the <u>VI</u> Corps. Intelligence Summary No 8 is attached (Appendix 11). 7 Officers and 190 OR joined the Brigade from reinforcements, schools, details etc. Casualties 1 OR 58 Battalion	Appendix 11. 8
	8 th		A very quiet day. The Brigadier visited the 57 th Battalion sector with the Staff Captain. The slight frost which has been existant for the last few days is breaking up. A "dummy" raid was carried out on RIFLE FARM by the Artillery at 6.15 pm. to 6.35 pm and another burst of five minutes at 8.35 pm. Enemy retaliation was practically nil. The night was quiet and our patrols were active. Intelligence Summary No 9 attached as	APPENDIX 12 8
	9 th		Weather rather unsettled with a little rain. Day and of night both as usual very quiet. During the morning the Brigadier Major and G.S.O I visited the 38 th - 59 th and 60 th Battalions. Lt Colonel STEWART rejoined the 57 th Battalion during the day. Intelligence Summary No 10 attached (Appendix 13).	APPENDIX 13. 8

WAR DIARY

Army Form C. 2118.

265

Instructions regarding War Diaries and Intelligence Summaries are contained in F. S. Regs., Par. II. and the Staff Manual respectively. Title pages will be prepared in manuscript.

INTELLIGENCE SUMMARY.

(Erase heading not required.)

Page 6

Volume VII

Place	Date	Hour	Summary of Events and Information	Remarks and references to Appendices
Sheet 28 N. 29. C. 4.4 RECENT DUGOUTS	December	10 ^a	<p>A beautifully fine day. The Brigade inspected the 58th Battalion sector during the morning and afternoon. During the morning officers (6) of the 2nd Australian Infantry Brigade came to Brigade Headquarters and were allotted one to each Battalion, one to Trench mortars and the Brigade Intelligence Officer remained at Ode H.Q. He was shown round the 58th and 60th Battalion sectors in the afternoon by Lieut MCIVER (15th Bde I.O.). At a little after 3.0 pm six GOTHAS flew over Brigade Headquarters at an extraordinarily low altitude and despite fire being brought to bear upon them by many A.A. batteries kept to their course and returned at (apparently) their leisure. At 6.30 pm the Divisional Order for the relief was received. This Brigade is being relieved by the 2nd A.I. Bde (its sister Bde) on the 14th and night 14/15th inst. On relief the Brigade is to move to the REMMEL AREA and on the 15th inst. it moves by train to PARENTY (near BOULOGNE). Brigade Order No 135 (Appendix 14) for the relief has issued. Intelligence Summary No 11 is attached (Appendix 15).</p>	APPENDIX 14 " 15

JS

6

WAR DIARY

Army Form C. 2118.

Instructions regarding War Diaries and Intelligence Summaries are contained in F. S. Regs., Par. II. and the Staff Manual respectively. Title pages will be prepared in manuscript.

INTELLIGENCE SUMMARY.

(Erase heading not required.)

Page 7

Volume XII

Place	Date	Hour	Summary of Events and Information	Remarks and references to Appendices
Sheet 28 N. 29. C. 4. 4. REGENT DUGOUTS	December	10 ^a	Night quiet on the front but some shelling around gun positions by enemy heavy artillery	8
		11 ^a	Day fine and cool. During the morning the Brigadier visited the front system of the 60 th Battalion. Enemy activity during the day & night was normal. Order No 136 for the move to the area near BOULOGNE was issued (Appendix 16). Intelligence Summary No 12 (Appendix 17) is attached and also as Appendix 18 strength returns for 8 th and	APPENDIX 16 " 17 " 18
		12 ^a	Day fine and cool. Quiet during both night and day. Brigadier visited 58 th Battalion during the afternoon. At about 2.0pm a number of Gothas flew over these Headquarters. There were at least six machines and probably more. They were engaged by A.A. fire and our own planes. One Gotta was seen to be hit by one of the fire of our planes & it crumpled up and fell in flames. Intelligence Summary No 13 attached (Appendix 9). In the afternoon CAPTAIN W. E. FREEMAN (of 15 th L.I.M.B.) was seriously wounded by the premature burst of a Stokes mortar shell. No particulars as yet to hand.	Appendix 19

WAR DIARY

Army Form C. 2118.

Instructions regarding War Diaries and Intelligence Summaries are contained in F. S. Regs., Part II. and the Staff Manual respectively. Title pages will be prepared in manuscript.

Volume XV

INTELLIGENCE SUMMARY.

(Erase heading not required.)

Page 8

Place	Date	Hour	Summary of Events and Information	Remarks and references to Appendices
Sheet 28 N. 29. C. 4. 4. RECENT DUGOUTS	December 13 th		<p>Day fine and cool. During the morning the Divisional Commander Brigadier and G.S.O. 2 (MAJOR G.F. WOOTTEN D.S.O.) visited the forward area. All surplus kit and baggage was collected and stacked preparatory to the move. Enemy attitude throughout the day and night was normal. Our own artillery in conjunction with a 9.45" Trench Mortar and a 6" Stob Newton Mortar fired on BEE FARM during the day and good results were obtained. During the night all enemy tracks were kept under fire in view of a suspected relief. The accident to CAPTAIN FREEMAN has not yet been explained but is thought to have been due to a defective shell. The mortar at the time was firing at an enemy plane and the shell burst in the gun - bursting it and killing the crew of three men besides wounding CAPTAIN FREEMAN. In the afternoon BRIG. GENERAL J. HEARNE C.M.G. D.S.O. (B.G.C. 2nd Aust. Inf. Bde) & his staff visited Brigade Headquarters to take over the sector. MAJOR WIECK G.S.O. 2 3rd Aust Div & late Brigade Major of this Brigade also called at Headquarters.</p>	

WAR DIARY

Army Form C. 2118.

265

Instructions regarding War Diaries and Intelligence Summaries are contained in F. S. Regs., Par. II. and the Staff Manual respectively. Title pages will be prepared in manuscript.

or
INTELLIGENCE SUMMARY.

(Erase heading not required.)

Page 9

Volume VII

Place	Date	Hour	Summary of Events and Information	Remarks and references to Appendices
Sheet 28 N. 29. C. 4. 4 RECENT DIGOUTS	December 13 th		All arrangements for the relief are now well in hand and it should go off smoothly tomorrow night. This evening the Signal Officers dugout was burnt out and all the papers for handing over as well as all personal gear were destroyed. Origin of fire uncertain. Intelligence Summary not attached (Appendix 20)	APPENDIX 20 Jd
	14 th		Quiet day. Preparations made for the relief which was completed by 9.0pm without incident. A few casualties were incurred during the relief. The total casualties during the period of guarding the line were	
KEMMEL CHATEAU.			On relief the Brigade moved back to the KEMMEL area and Brigade Headquarters were established at the Chateau	
	15 th		The Brigade moved by train from DE KENNEBEK Station to DESVRES where it billeted for the night. The journey down in the train was remarkable only for its slowness - 10 hours being spent on the trip instead of the scheduled 5. The first train (vide Order 136) arrived at 10.15 pm after leaving at 12.30 pm	

WAR DIARY

Army Form C. 2118.

Instructions regarding War Diaries and Intelligence Summaries are contained in F. S. Regs., Par. II. and the Staff Manual respectively. Title pages will be prepared in manuscript.

INTELLIGENCE SUMMARY.

Volume VII

(Erase heading not required.)

Page 10

Place	Date	Hour	Summary of Events and Information	Remarks and references to Appendices
(Sheet CALAIS) DESURE.S	December 15 th		and the second train did not arrive until about 2.15 AM. On the arrival of the second train at DESURES an accident occurred through (apparently) the front engine of the train stopping and the rear engine going on with the result that a carriage was telescoped and 66 casualties caused to the 32 nd Battalion, many of the casualties being serious.	
PARENTY	16 th		The Brigade moved off by march route in fine weather and arrived in the PARENTY area. The day was spent in settling down in the new billets which are very scattered and in some cases not very good. Map of the area attached (Appendix 22).	Appendix 22
	17 th		A heavy fall of snow last night which lasted for most of the day. No training to be carried out for several days. Word was received that CAPTAIN W.E. FREEMAN M.C. (15 th Lt. M.B.) died of the wounds he received on the 13 th inst. His loss to the Brigade is very great as he was a very brave and efficient officer.	
	18 th		Day fine but very cold with deep snow on the ground. Day spent	

WAR DIARY

Army Form C. 2118.

Instructions regarding War Diaries and Intelligence Summaries are contained in F. S. Regs., Par. II. and the Staff Manual respectively. Title pages will be prepared in manuscript.

or
INTELLIGENCE SUMMARY.

(Erase heading not required.)

Volume XII

Page 11

Place	Date	Hour	Summary of Events and Information	Remarks and references to Appendices
PARENTY	December 18 th		by units in settling down into billets and improvements generally to the billets.	81
	19 th		Still cold and snow still thick on the ground. Day uneventful. Conference at D.H.Q. at SAMER in the afternoon at which the Brigadier, Brigade Major and all Battalion Commanders attended. The comfort of the men in billets was discussed and the work during the period that the Division is at rest was also outlined.	81
	20 th		Weather conditions unaltered. The Brigade Supply Dump was moved from BEAUCORRY to HODICQ - the latter place being more central and also more accessible both for mechanical and horse transport. Four reinforcement officers per B ⁿ arrived.	81
	21 st		Weather conditions unchanged. The Official Australia Photographer came to Bde H.Q. and took a group of the Officers on the Brigade.	81
	22 nd		Weather conditions unchanged. Training carried on under Battalion arrangements.	
	23 rd		Sunday. Church parades held by all denominations.	81

WAR DIARY

Army Form C. 2118.

Instructions regarding War Diaries and Intelligence Summaries are contained in F. S. Regs., Par. II. and the Staff Manual respectively. Title pages will be prepared in manuscript.

Volume VIII

or INTELLIGENCE SUMMARY.

(Erase heading not required.)

Page 12.

Place	Date	Hour	Summary of Events and Information	Remarks and references to Appendices
PARENTY	December 24		Weather conditions unaltered. This day was observed as a complete holiday and preparations were pushed on for tomorrow Xmas dinner. Strength return for 15 th unit attached (Appendix 23)	APPENDIX 23
	25 th		Xmas day. Church parades held. All units of the brigade provided an excellent dinner for the men and the day was an entire success. Rain had fallen during the previous night but the snow is still thick upon the ground.	D
	26 th		Very heavy fall of snow all day. No training carried out. The snow is lying feet deep on the roads in places and has made the question of rations rather difficult.	
	27 th		Still heavy snow and as a result practically all training is suspended. The Brigade School assembled today at THUBEAUVILLE THUBEAUVILLE under Captain T.A. FAIRFAX 58 th Bn. (Appendix 24)	APPENDIX 24
	28 th		Weather conditions unaltered. GSO I called at Brigade Hd Qrs during the morning. Strength return for 22 nd unit attached as Appendix 25	APPENDIX 25

WAR DIARY

Army Form C. 2118.

Instructions regarding War Diaries and Intelligence Summaries are contained in F. S. Regs., Par. II. and the Staff Manual respectively. Title pages will be prepared in manuscript.

or
INTELLIGENCE SUMMARY.

(Erase heading not required.)

Page 13

Volume XII

Place	Date	Hour	Summary of Events and Information	Remarks and references to Appendices
Sheel Cairns PARENTY	December 29 th		Weather still cold and the snow still too thick upon the ground for any proper training. Training is confined practically to Route-marches and lectures. MAJOR J. S. S. ANDERSON M.C. 56 th Battalion reported for duty from England as Brigade Major Trainee and CAPTAIN C. W. LAY 59 th Battalion reported for duty as Staff Captain Trainee from 5 th Australian Divisional Headquarters where he had been attached to an A-Q. carrier. Strength returns for 29 th not attached as Appendix 26	Appendix 26 JL JL
	30 th		Sunday. Church parade held for all units	
	31 st		Weather conditions unaltered. Training still restricted to drilling on the roads and route marches. Sick leave returns for month of December attached (Appendix 27)	Appendix 27 JL

[Signature]
MAJOR
BDE. MAJOR
188 AUS. INF. BRIGADE

Appendix to 26 to accompany

WAR DIARY

OF

15TH AUSTINE BDE. HEADQUARTERS.

VOL. 12

from 1st Dec. to 31st 17

Prepared by

J. Henderson *hens*

15th AUSTRALIAN INFANTRY BRIGADE.

APPENDIX

Summary of Intelligence.
From 6 a.m. 30/11/17 to 6 a.m. 1/12/17.

Ref. Map. Sheet 28 1/40,000

1. OPERATIONS.

- (a) Artillery. Our artillery was active throughout the period. good shooting by the 18 pounders was observed on an enemy working party in O.36.A. near OLIRA trench. At 5. p.m. guns opened heavy bombardment on enemy position O.29.D. - O.30.C. and continued with 18 pounders and heavies for 35 minutes. Enemy did not retaliate. At 4.15 a.m. our 18 pounders shelled enemy position at BEEK FARM also enemy O.P. at O.24.C.2-5. WAI FARM, O.23.D.1-2, KIVI FARM and COMBES CANAL received attention intermittently throughout the day. From 1.30 to 4.30 p.m. our heavies shelled back areas.
- Patrols. The right Battalion frontage was patrolled continuously from 7 p.m. to 4 a.m. At 8 p.m. a listening post was established at approximately O.29.C.7-2 and remained there until 11 p.m. They report splashing of water and could hear men speaking. They also heard a party of 20 strong apparently a relief. At 10 p.m. a patrol moved out to O.29.C.4-6 thence in a semi-circular movement to O.29.C.45-85 and report frontage quiet. Another patrol moved out along road in O.29.A. to O.29.A.9-4. thence in a northerly direction to WAMBREKE in O.23.C. thence to our own line and report having seen an enemy patrol of 4 men at N.29.B.1-7 moving southwards. Signalling was also seen in same vicinity. 1 Officer and 9 other ranks moved out from our line to position O.23.C.9-3 and remained there for one hour. They report NO MANS LAND to be in very wet and boggy condition and that no enemy movement was detected. A patrol of one N.C.O. and four men moved out at 7.30 p.m. from O.11.B.9-3 to vicinity of O.12.A. 2-4 thence to O.12.A. 2-1 returning at 11 p.m. They report no enemy movement.
- (c) Machine Guns Known enemy tracks and roads were engaged throughout the night. Guns were particularly active from 5.15 p.m. to 6.45 p.m. also from 1 a.m. to 1.45 a.m. Owing to poor visibility during the day good targets could not be observed. The following targets were harassed from 6 p.m. intermittently until dawn:- CENTRE FARM in O.18.C., Cross Roads O.24.A., Cross Roads O.18.B.60-65 to O.18.B.20-75. Enemy tramway O.24.A. & B. Expenditure 8,000 rounds.
- (d) Trench Mortars. 65 rounds were fired on Machine Gun positions. It was noticed that guns ceased firing when our mortars opened fire on them.

2. IDENTIFICATIONS. Nil.

3. ENEMY SHELLING.

Enemy shelling has slightly increased during the last 24 hours. RAVINE WOOD and O.17.A. received special attention with 77 mm. from direction of HOUTHEN. A pill box in O.34.A. was heavily shelled with 5.9", at 2.15 p.m. O.29.B. Central, O.26.B. and O.27.B. were shelled intermittently with Gas Shells and 4.2". O.26.C.7-8 and vicinity of LUMI FARM, O.19.D. and O.20.D. were also shelled with Gas and H.E. during the afternoon. O.23.A.3-6 and front line in that vicinity was shelled with 77 mm at 11 a.m. WYTSCHAETE received attention with Gas shells from direction of Houthen.

APPENDIX I

(2)

4. ENEMY ATTITUDE.

Infantry very quiet along the whole front. Artillery aggressive.

5. ENEMY DEFENCES.

(a) Machine Guns. Machine Guns were much quieter than usual particularly so during the night. Wire around the TWINS O.11.D.9-2 is visible and appears to be very strong. Wire between BEEK and VAN FARM also appears to be very thick.

6. ENEMY AERIAL ACTIVITY.

At 10.30 a.m. 3 enemy planes seen encircling vicinity of O.12.Central. They were driven off by our anti-aircraft. At 9.20 a.m. 2 balloons were up at 15 deg. and 50 deg true from O.26.B.8-6. No E.A. crossed our lines during the day.

7. ENEMY MOVEMENT.

At 7 a.m. an enemy party of 6 observed working on post in vicinity of O.12.A.5-2.

A working party at OTIRA trench at O.3..A. was dispersed by our artillery.

During the morning movement was observed on road O.36.A.2-2. The following train movements were observed during the day:--

11 a.m. train seen shunting at VERVICQ.
11.30 a.m. train seen moving from BOUSEQUE to VERVICQ.
11.42 a.m. train seen moving from GHELWE towards VERVICQ.
12.30 p.m. train moving from TENBRIELEN to GHELWE.

The following true bearings were taken from O.27.B.80-05:--

7.5 a.m. smoke screen at 71 deg.
7.45 a.m. gun flashes at 86 deg.
7.46 a.m. gun flashes at 81 deg.
7.50 a.m. gun flashes at 76 deg.
8.5 a.m. gun flashes at 76 deg.
8.25 a.m. smoke screen at 71 deg.
10.20 a.m. smoke screen at 59 deg.

8. MISCELLANEOUS.

Heavy box about the same size as S.A.A box was picked up in vicinity of No. 2 post which was raided. Box appears to contain explosives with fuse and lighter attached. It was evidently brought with raiding party for the purpose of blowing up Pill box but was dropped when objective was not reached.

The ground in front of post was examined by day but no enemy dead were to be seen.

9. DISPOSITIONS.

Following are the dispositions of the Brigade.

Brigade Headquarters	N.29.C.4-4.
57th Battalion	ONRAET FARM O.14.A.3-1.
58th Battalion.	O.20.B.2-2.
59th Battalion	LUMM FARM O.23.D.2-7.
60th Battalion	TORREKEN FARM O.20.D.2-3.
15th M.G. Company	LEG COPSE O.20.A.6-5.
15th A.I.M.B.	DERRY FARM O.27.A.5-6.

[Handwritten signature]
Major,
Brigade Major,
15th Australian Infantry Brigade.

15th AUSTRALIAN INFANTRY BRIGADE ORDER No. 134.

APPENDIX.

Ref.-Sheet 28 S.W.2.
WYTSCHAETE 1/10,000

2nd December, 1917.

1. On the 4th December, 1917, from 8.0 a.m. to 4.0 p.m. the 1 ANZAC CORPS Heavy Artillery are carrying out a bombardment to destroy the following localities :-
 1. FLY BUILDINGS.
 3. WAM FARM.
 2. BEEK FARM.
2. (a) Target 1 is being engaged by the 70th Siege Battery (8") and targets 2 and 3 by 6" Howitzer Battery of the 12th H.A.G.; 250 rounds being allotted for each task.
(b) RIFLE FARM is also being engaged by a heavy trench mortar (9.45") at the same time.
3. The following precautions will be taken during the bombardment:-
 - (a) The 59th Battalion will withdraw Nos. 3.O.29 and 4.O.29. posts to Trench O.29/3 and O.29/2.
 - (b) The 30th Battalion will withdraw all posts and dispose its front line company as follows :-
 - 2 Platoons in trench O.23.2.
 - 1 Platoon in S.P.2.O.22.
 - 1 Platoon in OUSE TRENCH.
 - (c) The 58th Battalion will withdraw Nos. 9.O.23, 1.O.17 and 2.O.17^{posts} and will dispose its front line company as follows :-
 - 1 Platoon in WALL FARM.
 - 1 Platoon under the bank at O.17.O.2-6.
 - 2 Platoons in and around BUG WOOD.
 - (d) The 15th L.T.M.B. will arrange to withdraw any mortars that may be necessary.
4. Arrangements will be made direct by 58th Battalion and 30th Battalion with the ^{15th} Machine Gun Company for any extra Vickers Guns required to protect the front.
5. The withdrawal will be complete by dawn on the 4th December and posts will be re-occupied as early as possible after the bombardment.
6. Reports on the Bombardment will be sent to Brigade Headquarters by 6.0 p.m. on the 4th December.
7. This order is liable to alteration and the bombardment will not take place unless the visibility is good.
8. ACKNOWLEDGE.

W. Street
Major,
Brigade Major,
15th Australian Infantry Brigade.

Issued at ..9:10 p.m.

To

- 57th Battalion
- 58th Battalion
- 59th Battalion
- 30th Battalion
- 15th M.G. Company
- 15th A.L.T. Co.
- Copies to :-
- No. 4 Signal Section
- 25th M.G. Company
- Brigade Commander
- 63rd Infantry Brigade

Copy No.	Copies to :-	
1.	8th A.I. Brigade	11.
2.	70th Siege Battery RA.	12.
3.	12th H.A. Group	13.
4.	C.S.A. 5th Aust. Div.	14.
5.	5th Aust. Div.	15.
6.	HOLLEBEKE GROUP Arty.	16.
	OOSTTAVERNE " "	17.
7.	Staff Captain	18.
8.	Vesp Diary	19-21 ✓
9.	File	22.
10.		

15th AUSTRALIAN INFANTRY BRIGADE.

APPENDIX

Intelligence Summary No.3.

Period 6 a.m. 1/12/17 to 6 a.m. 2/12/17.

1. OPERATIONS.

Our Artillery was not so active as usual and heavy mist prevented observation.

WAMM FARM, GREEN FARM, RIFLE FARM, and FLY BUILDINGS, received attention during the morning.

HOUTHEM and COMINES were intermittently shelled throughout the day.

KORTEVILDE tracks in P.7.c., O.13.b., Pump Farm and Fort Buildings were also shelled during the twenty four hours.

- (a) Machine Guns The usual harrassing fire was carried out throughout the night on the following targets:-

Enemy tramway system	0.24.c & d.
Centre Farm	0.18.c.
X roads	0.24.a.
HOLLEBEKE CHATEAU	
Road in	0.24.c.
X roads in	0.36.b.18.57.
Military Road in	0.24.a.15.80.
-do-	9.18.d.20.15.

Expenditure of ammunition 12,000 rounds.

- (b) Trench Mortars.

Thirty rounds were registered on FLY BUILDINGS and RIFLE FARM and a machine gun at WASP FARM and at 0.23.d.45.30 were silenced.

Enemy working party at 0.29.c.95.95 were fired on and dispersed.

- (c) Patrols.

Our reconnoitring patrols continuously patrolled NO MANS LAND from dark to dawn and report enemy to be very quiet, no enemy patrols being encountered.

A working party was observed at 0.29.c.95.95. and dispersed by our trench mortars.

The following area was patrolled:-

At 6.30 p.m.- 0.29.c.3.4. to 0.29.c.5.8. to 0.29.c.5.95. thence to our line and repeated four times during the night.

At 11 p.m. - Road 0.29.b.5.3. to 0.29.b.95.65 to Rd. 0.29.b.95.85. thence to our line was patrolled and repeated at 1 a.m., 3 a.m. and 5 a.m.

At 2.50 a.m.- A patrol moved out to 0.89.c.5.7. and remained there for one hour but no enemy movement was observed.

At 3.20 a.m.- A patrol of 1 Officer and 8 O.R's. proceeded to 0.23.c.9.2. and returned by 0.23.c.3.5. They report NO MANS LAND to be very quiet and no movement or machine gun fire observed.

2. IDENTIFICATIONS. Nil.

3. ENEMY SHELLING.

Enemy shelling has been consistent and distributed with slight concentrated fire.

GUY FARM, WALL FARM, OLGA TRENCH and MAHIEU FARM received, DENNY'S slight attention with 5.9.s. ROSE & DUMP WOODS and 0.16.b., also 0.21.b. and 9.22.a. were shelled intermittently.

0.19.d. and 0.20.c. and TORREKEN FARM received a few gas shells between 7 and 8 p.m.

4. ENEMY ATTITUDE.

Very quiet in front line system but, movement in rear areas. Infantry and Machine gunners exceptionally quiet and artillery normal.

5. ENEMY DEFENCES.

Enemy were observed in a small trench at O.11.d.9.2.

This appears to be a night M.G.Post.

A Machine gun was observed firing from BANG FARM.

There appears to be a small trench or Camouflaged Machine Gun Position at O.29.d.4.7.

Enemy post suspected at O.29.c.9.3.

6. ENEMY AERIAL ACTIVITY.

During the period only two planes have crossed our trenches. These were engaged by two of our planes and driven back.

(a) Baloons. Nil.

7. ENEMY MOVEMENT.

At 3.25 p.m. two men were seen moving from a pill box O.23.d.8.9. in direction of RIFLE FARM.

At 9.30 a.m. 3 men were shovelling in vicinity of BILL FARM O.24.a.

Owing to bad visibility no railway movement could be observed. Gun flashes were observed at 7.30 a.m. from O.27.d.90.65. at true bearings of 60 and 53 degrees.

(a) Signalling. At 9 p.m. a red light was signalling from HOUTHEM.

8. MISCELLANEOUS.

The box mentioned in yesterday's summary was examined and the following points were ascertained. Strong wooden box, approximate size of S.A.A. box containing 30 pounds of perdit. (German High Explosive) a priming charge, detonator, length of fuze approximately to burn 30 seconds and a special percussion lighter. All properly fitted up and connected for firing.

A large flame followed by a dense white smoke was observed in the vicinity of HOUTHEM at 10.30 a.m. The flame was very luminous.

9. DISPOSITIONS.

The following are the dispositions of the Brigade.

Brigade Headquarters	N.29.c.4.4.
57th Battalion	ONRAET FARM O.14.a.3.1.
58th Battalion	0.20.b.2.2.
59th Battalion	LUMM FARM O.23.d.2.7.
60th Battalion	TORREKEN FARM
	0.20.d.2.3.
15th M.G.Coy.	LEG COPSE O.20.a.6.5.
15th A.L.T.M.B.	DERRY FARM O.27.a.5.6.

[Handwritten signature]
Lieut.
for Brigade Major.
15th Australian Infantry Brigade.

S E C R E T.

Copy No. 21..

Reference 15th Australian Infantry Brigade Order No. 134.

1. If the Operation therein detailed has to be postponed the code word "BUCKLEY'S" will be sent to all concerned.
2. If Artillery fire is needed on the front of the Sector between BEEK FARM and FLY BUILDINGS, a white flare will be fired towards our own lines.
3. Arrangements have been made that there will be no Artillery fire on the night 4th/5th December between the hours of 9.30 p.m. and 12.30 a.m. on the points that have been bombarded during the day in order to allow of patrolling.
4. Bombardments similar to that detailed in the above mentioned order will be carried out on the 5th December against THE TWINS and THE GIANT and on the 6th December against KIWI FARM and KINGSLERC. On the latter date wire will be cut between the bombarded points.
5. There will be no withdrawal of Infantry during the bombardment on the 5th December.
6. ACKNOWLEDGE.



Major,
 Brigade Major,
 15th Australian Infantry Brigade.

Issued at 9.0 p.m. to all recipients of Brigade Order No. 134.

3-12-17

15th AUSTRALIAN INFANTRY BATTALION.

DAILY STRENGTH RETURN.

1st DECEMBER 1917.

UNIT.	: Actually with :			: In Hospital. :			: Detached. :			: Total Effective Strength. :			Increase.	Decrease	Excludes.
	Unit.	Off.	O.R. Total.	Off.	O.R. Total.	Off.	O.R. Total.	Off.	O.R. Total.	Off.	O.R. Total.				
15th Bde H.Q.	6	27	33	1	-	1	-	2	2	7	29	36			
15th A.L. T.M.B.	3	38	41	-	4	4	1	9	10	4	51	55			
15th M.G. Coy.	9	176	185	-	1	1	2	7	9	11	184	195			
57th Bn.	25	695	720	1	16	17	5	156	161	31	867	898		1 O.R. Evac C.C.S.	5 O.R.A.M.G.
58th Bn.	35	658	693	-	15	15	7	96	103	42	769	811		1 O.R. Evac C.C.S.	1 D.R. Casualty
59th Bn.	25	638	663	5	44	49	12	133	145	42	815	857		1 O.R. to A.G.B.D.	8 O.R. Casualties
60th Bn.	28	692	720	1	21	22	8	83	91	37	796	833	1 O.R. Ex prison.	1 O.R. Evac C.C.S.	5
TOTAL.	131	2924	3055	8	101	109	35	486	521	174	3514	3685			

APPENDIX 5

265

DETAILS OF DETACHED.

15th M.G.Coy. Off. O.R.	57th Battalion. Off. O.R.	58th Battalion. Off. O.R.	59th Battalion. Off. O.R.	60th Battalion. Off. O.R.
Special Duty. 2	A.G's office 1	Postal Staff 1	Special Duty 1	A.S.C. 3
Capt. Muirson	A.S.C. 3	A.F.C. 1	Lieut. Dunn.	A.W.L. 1
Lieut. Trevan	A.W.L. 3	Lieut. Keating	A.S.C. 2	A.G's office 1
Leave 2	Compound 8	Concert Party 2	A.W.L. 5	Camp Warden 1
S.A. School. 1	A.P.M. 1	Corps H.Q. 1	A.G's office 1	Concert Party 3
Abbeville Sch. 1	D.A.D.O.S. 1	A.S.C. 2	Corps H.Q. 1	Detention 4
14 Corps A.A.Sch. 1	Div. Duties 23	A.W.L. 6	Compound 9	Leave 3 7
A.S.C. 2	Dugout Party 1 31	A.G's office 1 2	Div. Duties 2 28	Lieut. Anderson
	Lieut. McCallum	Lieut. McWhannell	Lieut. Toohy	" Varley
	14 Engineers 6	Anzac Workshops 2	" Lay	" Dolphin
	15 do- 24	Div. Duties 22	Leave 1 10	Anzac Workshops 1
	Leave 11	Detention 12	Lt. Col. Mason.	Salvage 1
	Anzac Workshops 2	Leave 10	4 Army Workshops 2	Div. Duties 1 10
	Supply Guard 1	Supply Depot 5	Arrest in London. 1	Lieut. Davis
<u>15th A.L.T.M.B.</u>	Corps School. 3 9	Area Duties 12	Lieut. Reid.	Working Party 30
Special Duty. 1	2/Lt. Gowenlock	Corps School. 2 12	A.I.F.H.Q. London. 1	Corps School 2 6
Lieut. Gamble	Lieut. White	2/Lt. Webb	Lieut. Pentreath.	Lieut. Diamond
Leave 2	" Falconer	" Slaughter	Working Party 30	" Richards
Corps School. 5	Army School. 1 2	Musketry England 1	Engineer Party 24	Corps Sigs 3
Gas School. 1	Lieut. Salmon.	Army School. 2 4	Corps Inf. School. 1 4	" Lewis Gun 1
A.W.L. 1	Band. 4th Army 29	Capta. Loughnan	Lieut. Heron	" Bombing 1
		Lieut. Crawley	Corps Lewis Gun 1 1	" Gas 1
		Farrrier School 12	" Gas 4	Army School 1 2
		Aldershot 1	" Bombing 1	Capt. Dickson
		Major De Ravin	" Signal 2 2	Army Sigs 1
			Lieut. Pinkerton	" Sniping 1
			2/Lt. Olver	" Cookery 1
			Army School. 1 2	" Musketry 1 1
			Lieut. Burse	Lieut. Knight
			Army Scouting 1 2	G.H.Q. Lewis Gun 1
			Lieut. Christian	Transport School 1
			Army Cookery 1	
			Army Musketry 1	
			G.H.Q. Lewis Gun 1 2	
			2/Lt. Deshon	
			Transport School 1	

5 156

7 96

12 133

8 83

APPENDIX 5

22

15th AUSTRALIAN INFANTRY BRIGADE

APPENDIX

Intelligence Summary No.4.

From 6 a.m. 2nd December 1917 to 6 a.m. 3rd December 1917

1. OPERATIONS.

(a) Artillery

Our artillery showed the usual activity during the day, but was quieter during the night.

During the morning BEEK FARM was shelled with H.E. and shrapnel (approx. 30 rounds).

From 10.20 a.m. to 10.45 a.m. our heavies shelled COMINES causing a large conflagration which burnt until 4 p.m. GHELUVELT MILL and church were shelled from 12.20 p.m. several direct hits being observed and it was clearly seen that the fortification of the MILL was badly damaged.

Field Batteries engaged hostile position in O.29.d. & O.36.d.

Good shooting on OMELETTE TRENCH was observed at 3.15 p.m. and at 11 p.m. our field guns again shelled the same vicinity.

(b) Patrols.

Our patrols were active on the whole frontage from 7.30 p.m. to dawn, and report NO MANS LAND to be very quiet, no enemy patrols or working parties being observed.

The following patrols were in action during the night

Time	Routes followed	Remarks.
7.30 p.m. to 10.30 p.m.	From O.11.d.1.3. North to O.12.A.1.4. returning to our line at O.11.b.4.0	Report no enemy encountered.
12.30 a.m. to 3.30 a.m.	From O.11.b.4.0. to O.11.d.9.9. making a thorough reconnaissance.	No trace of enemy.
4.45 a.m. to 5.25 a.m.	From VAIL FARM and worked along O.17.d.2.5. to O.17.d.2.10	Report ground to be very rough and wet. No enemy parties or patrols sighted. G. fire quiet.
11.45 p.m. to 12.30 a.m.	From O.23.c.15.95 to O.23.a.9.5. then to O.23.A.8.9. and returned on same route.	Report NO MANS LAND very quiet and the ground boggy and wet.
12.15 a.m. to 2.10 a.m.	From O.29.a.3.4 in a northerly direction and crossed the WAMBEEK at O.23.c.4.2. thence to O.29.b.4.4. returning along Road to O.29.e.3.9. and returned on original route.	The patrol reports WAMBEEK very difficult to cross (12 to 15 feet wide in places. There is a tree laying across the creek at O.23.c.3.1.) The ground is wet and marshy. No enemy encountered.

265

(c) Machine Guns.

The usual harrassing fire was carried out during the night but no good targets were available during the day.

The following targets were engaged from 5 p.m. to dawn.

- BANG FARM 0.17.b.7.3.
- The TWINS 0.11.d.9.2.
- The GIANT 0.12.c.4.2.
- POLL HOUSE 0.18.a.7.5.
- SPUD FARM 0.18.b.2.9. and Road running through 0.18.d. Bridge over canal D.12.d.
- Cross Roads 0.36.b.2.5. (This position has lately been camouflaged) 0.18.c.6.2., 0.24.a.50.25.

Total expenditure of ammunition 17,500 rounds.

(d) Trench Mortars.

Trench Mortars were active, the following targets being engaged.

RIFLE FARM, FLY BUILDINGS, enemy M.G. position at 0.29.d.45.15. and the TWINS.

The total expenditure of ammunition was 66 rounds.

2. IDENTIFICATIONS Nil.

3. ENEMY SHELLING

Hostile artillery was exceptionally quiet during the 24 hours. Prince RUPERTS DUGOUTS, DERRY FARM, WAIL FARM, and areas 0.19.d., and 0.26.a. were lightly shelled with 5.9s and occasional gas shells. While the front line area was untouched.

4. ENEMY ATTITUDE. Exceptionally quiet.

5. ENEMY DEFENCES.

A Machine Gun at BEEK FARM enfiladed our front line in the southwesterly direction. Indirect M.G. Fire appears to come from OTIRA TRENCH 0.30.c.8.2.

Trench at 0.11.d.9.2. previously reported is occupied by the enemy and is suspected Machine Gun post.

6. HOSTILE AERIAL ACTIVITY.

Only two planes crossed our lines during the day at a very high altitude.

(a) Balloons. Nil.

7. ENEMY MOVEMENT.

A small party at 7 a.m. seen near July Farm were dispersed by our snipers.

At 8.30 a.m. two men were seen walking towards WERVICQ and disappeared into a low line of trees.

At 12.45 p.m. a man came out of SQUARE FARM and moved in an easterly direction.

The following train movements were observed:-

- 11 a.m. train shunting in WERVICQ.
- 12.30 p.m. train from TENBRIELEN to GHELUWE.
- 8.6 a.m. a small motor engine drawing 17 trucks towards WERVICQ from direction of TENBRIELEN.
- 1.15 p.m. train moving from MENIN to WERVICQ.

In 0.25.b. a train could be seen moving backwards and forwards N and S direction apparantly this is a broad gauge and appears to meet the narrow gauge train in that vicinity.

(a) Signals.

At 3.50 a.m. a red lamp was signalling from direction of TENBRIELEN.

At 5 p.m. lamp signalling was again seen signalling from HOUTHEM.

7. ENEMY MOVEMENT Contd.

(b) Flares.

Numerous red flares bursting into two stars were fired from irregular positions without apparent result.

8. MISCELLANEOUS.

A fire in COMINES burnt from 10.45 a.m. to 4 p.m. The enemy R.A.P. located in long low building at true bearing 93 degrees from G.27.d.90.65.

Enemy is making consistent use of smoke screens for his artillery.

(a) State of ground.

The ground is now drying hard but NO MANS LAND is still boggy and wet.

9. DISPOSITIONS.

The following are the dispositions of the Brigade.

Brigade Headquarters	N.29.c.4.4.
57th Battalion	ONRAET FARM 0.14.a.3.1.
58th Battalion	0.20.b.2.2.
59th Battalion	LUTE FARM 0.23.d.2.7.
60th Battalion	TORREKEN FARM
	0.20.d.2.3.
15th V.G.Coy.	LEG COPSE 0.20.a.6.5.
15th A.L.T.M.B	DERRY FARM 0.27.a.5.6.

[Handwritten signature]
 Major.
 Brigade Major.
 15th Australian Infantry Brigade.

15th AUSTRALIAN INFANTRY BRIGADE

Intelligence Summary No.5.

From 6 a.m. 3rd December to 4th December.

1. OPERATIONS.

- (a) Artillery. Our artillery was very active consistently shelling enemy positions and strong points throughout the period. At 11.30 a.m. good hits with 18 pounders were observed at BEEK FARM. From 1 p.m. to 1.30 p.m. the Road along Canal between COMINES and WERVICQË and WERVICQË-TENBRIELEM Rd. were intermittently shelled with the 60 pounders. A direct hit was observed on a gun firing from true bearing 77 degrees from O.27.b.90.65. causing a fire in adjoining building and numerous explosions. This eventually set fire to a dump in the same vicinity and burnt for four hours. BANG FARM, THE TWINS, and GIANT received attention also. Intermittent fire was carried out on enemy tracks throughout the night.
- (b) Patrols. The usual patrolling of NO MANS LAND was carried out. A patrol at 9.45 p.m. reconnoitred vicinity of RIFLE FARM, they report having passed an empty partially destroyed Pill Box at O.23.a.8.0. then proceeded to an embankment at O.23.d.10.95. where they remained and listened. New earthworks were visible about 30 yards to the east and appeared about 6 yards long and evidently a parapet. This is a strong post and is occupied. Enemy discovered us and opened M.G. fire which compelled us to withdraw. A party 20 strong moved to the South from the strong post and two men moved towards the spot where our patrol was first located. The Machine Gun at July Farm was located and the officer in charge of patrol is of opinion that the post he encountered is either Rifle or Bombing Post. There are at least two M.G. and one Infantry post around RIFLE FARM. The field of fire is good especially for traversing. The infantry post was thinly wired. Several small parties were seen but disappeared in the darkness.
- (d) Trench Mortars. Forty rounds were fired on the TWINS and traversing fire to BANG FARM. A Minnenwerfer firing from FLY BUILDINGS was silenced and at 3.30 am. another Minnenwerfer firing from RIFLE FARM was also silenced. M.G. position was located at O.27.c.70.65. and was fired on whenever the gun fired. Twenty rounds were fired at M.G. position O.29.d.55.60.
Total expenditure 100 rounds.

2. IDENTIFICATIONS

Nil.

3. ENEMY SHELLING

Enemy artillery was above normal particularly on our right Battalion area. The areas O.27.a, b, and d receiving special attention the whole day.

From a battery true bearing 94 degrees from O.27.d.90.65. WALL FARM was shelled on several occasions with 77s. from direction of COMINES.

A few 5.9s. fell on X roads and vicinity of O.11.c.13.11. OLIVE TRENCH and the RAVINE also received the usual attention.

4. ENEMY ATTITUDE.Above normal

The Artillery was aggressive and there was considerable infantry movement.

5. ENEMY DEFENCES.

Enemy working on a Pill Box slightly North of LAKE FARM (approx. O.24.c.45.50.)
Minnenwerfers have been firing from FLY BUILDINGS and RIFLE FARM.
M.G's. located at O.29.c.80.65. and O.29.d.55.60.
Report on RIFLE FARM in para (b) Patrols.

6. HOSTILE AERIAL ACTIVITY.

Inactive during the day but active during the night.
At 9 a.m. enemy plane crossed our line flying ^{at} very high altitude. During the night several E.A. crossed our lines, dropping bombs on our back areas.

(a) Balloons.

Nil.

7. ENEMY MOVEMENT.

Considerable movement was observed behind enemy lines.
At 7.50 a.m. party of ten in pairs at intervals walking along OMELET TRENCH. Four of them went to LAKE FARM and six got into the trench. Smoke at 8.20 a.m. coming from dug-out in OMELET TRENCH.

A party of twelve moved from Junction of Roads O.24.c.80.05 to LAKE FARM. They appeared to be carrying sawn timber and square boxes to Pill Box north of LAKE FARM.
At intervals during the day men were observed working in rear of OMELET TRENCH.

Another party of six in loose dress seen in road behind KORTEWILDE O.14.a. Single men seen carrying planks to PILLEGREMS FARM.

The following train movements were observed

10 a.m. train WERVICQ to TENBRIELEN.
10.40 a.m. train left TENBRIELEN for WERVICQ.
11.10 a.m. " " " "
11.50 a.m. train shunting at WERVICQ.
12.50 p.m. train from WERVICQ to GHELUWE.
1.30 p.m. train from GHELUWE to TENBRIELEN, thence to WERVICQ

Night movements as per Patrol reports.

(a) Signalling.

At 1.50 p.m. a white signal lamp was used from building in West edge of TENBRIELEN.

Red flares were sent up on which short shelling on WALL FARM ceased.

8. MISCELLANEOUS.

Artillery boards were erected at 300 yds. interval along our frontage.

A dud gas shell fell near PRINCE RUPERTS DUGOUTS O.20.b.15.20 of following description:- 77 calibre, tinny appearance, 12 inches long, long copper nosecap and W on base.

Fortifications of GHELUVELT MILL & CHURCH are practically obliterated.

1. Contd.

(a) Machine Guns. Our machine guns were active throughout the night engaging the following targets from 5 p.m. to dawn.
Road from TWINS to GIANT. BANG FARM. Cross Roads O.18.b.60.05 down X Roads to MURPHY FARM. CENTRE FARM in O.18.c. to X roads near same. O.24.d.50.40, O.24.c.78.02., Gun on X roads O.24.c.80.08. LAKE FARM and road O.24.c.9.9. to O.24.d.09.99.
Expenditure of ammunition 19,000 rounds.

9. LOCATIONS The following are the locations of the Brigade

Brigade Headquarters	N.29.c.4.4.
57th Battalion	ONRAET FARM 0.14.a.3.1.
58th Battalion	0.20.b.2.2.
59th Battalion	LUMM FARM 0.23.d.2.7.
60th Battalion	TORREKEN FARM 0.20.d.2.3.
15th M.G.Coy.	LEG COPSE 0.20.a.6.5.
15th A.L.T.M.B.	DERRY FARM 0.27.a.5.6.

[Handwritten signature]

Lieut.
for Brigade Major.
15th Australian Infantry Brigade.


265
Volume VII
SECRET.

APPENDIX 8

Headquarters,
15th Australian Infantry Brigade,
5th December, 1917.

57th Battalion,
58th Battalion,
59th Battalion,
60th Battalion,
15th M.G. Company,
15th L.T.M.E.,
25th M.G. Company,

1. The Heavy Artillery in conjunction with the Field Artillery are bombarding the following positions tomorrow 6th December between 8.0 a.m. and 4.0 p.m. :-
 1. JULY FARM.
 2. RIFLE FARM.
 3. FLA BUILDINGS.
2. The 57th and 59th Battalions will not withdraw any posts but it will be necessary for the 60th Battalion to withdraw all posts and the 58th Battalion all except Post 3.0.17.
3. The withdrawal will be complete by dawn on 6th December and posts will be reoccupied as soon as possible after the bombardment.
4. Battalion Commanders concerned will arrange direct for any extra Machine Gun Protection they may require.
5. A White flare fired towards our own lines will be the signal for Artillery Support.
6. Reports on the bombardment will be forwarded to Brigade Headquarters as soon as possible after the bombardment.
7. ACKNOWLEDGE by wire.


Major,
Brigade Major,
15th Australian Infantry Brigade.

Copies to :-

5th Australian Division.
C.R.A.
Hollebeke Group Artillery.
Oosttaverne Group Artillery.
112th Infantry Brigade.
WAR DIARY (3)
8th A.I. Bde.

15th AUSTRALIAN INFANTRY BRIGADE.

Intelligence Summary No.6.

From 6 a.m. 4th December to 6 a.m. 5th December.

1. OPERATIONS.(a) Artillery.

Our artillery was above normal during the 24 hours. From 8 a.m. to 4 p.m. 8" heavies and 6" howitzers maintained a steady and constant bombardment on FLY BUILDINGS, 9.23.b.1.9.; WAM FARM, 0.23.d.1.3.; and BEEK FARM, 0.23.b.1.9.

750 shots were fired and some good shooting was registered on these targets several direct hit being observed. Throughout the night intermittent fire was maintained on enemy tracks.

(b) Patrols.Separate Report.(c) Machine Guns.

During the bombardment of FLY BUILDINGS one M.G. fired on party twenty-five strong moving from FLY BUILDINGS to HIGH FARM casualties being inflicted.

Our machine guns engaged in harassing fire on the following targets:-

By day, 0.24.c.5.4.
0.24.c.78.02.
0.18.c.5.1.
0.24.c.57.50.
Rd. 0.24. Central.

From 5 p.m. to dawn HOUTEBEKE CHAU BRIDGE over CANAL, 0.12.b. and Road leading to same. Enemy tram system 0.24.a. & b., CENTRE FARM, 0.18.c., and X roads near same.

Expenditure of ammunition 19,000 rounds.

(d) Trench Mortars.

It has been noticed that the mortars are proving very effective in silencing enemy M.G.s.

Machine guns fired on remain silent for at least two hours, a burst of 2 or 3 rounds being sufficient to silence them. The following targets were engaged:- enemy M.G. position at 0.29.d.3.7., suspected strong post from which flares have been fired 0.29.b.5.2., at irregular intervals on BEEK FARM and strong post 0.29.b.2.7., the TWINS, and 0.23.d.50.45.

Expenditure of ammunition 70 rounds.

(e) Heavy Trench mortars.

Heavy trench mortars very effectively shelled RIFLE FARM. Expenditure of ammunition 13 rounds.

2. IDENTIFICATIONS. Nil.3. HOSTILE SHELLING.

The enemy showed increased activity during the morning but were very quiet during the afternoon there being no retaliation to our bombardment.

At 9 a.m. the ROUZEBEKE VALLEY was searched with 77's. and H.E. from direction of HOUTHEM.

OLIVE TRENCH from RAVINE forward to 0.11.c.0.6. was shelled with 5.9s. blowing the sap in, in several places.

DERRY HOUSE and neighbouring vicinity received attention with 5.9s. from direction of WERVICQ.

MANCHESTER STREET between WAMBEEK Rd. and the Rd. in 0.22.d. leading to ORLONG FARM was also shelled the sap being blown in, in two places.

3. HOSTILE SHELLING Contd.

From 8 p.m. to 10 p.m. BAY Road between TORREKEN Corner and BAY FARM was intermittently shelled with 4.2's. Prince RUPERTS DUGOUTS received slight attention.

4. ENEMY ATTITUDE.

Infantry normal. Artillery aggressive during morning but quiet throughout the night.

5. ENEMY DEFENCES.

Enemy strong point was located in vicinity of WHIZ FARM (approx. Pill Box 0.17.d.65.95.).

Machine Gun and Infantry Post located by patrol in 0.11.d.00.85.

There appears to be fresh earthwork at 0.29.b.9.5. and wire in front of WAM FARM is exceptionally thick.

(a) Machine Guns.

Patrols were fired on from M.G. at WAM FARM otherwise M.G.'s. were very quiet.

6. HOSTILE AERIAL ACTIVITY.

At 4.30 p.m. 2 E.A.'s. flying at a very low altitude over our left Battalion front line were driven off by our Machine Gun fire.

At 2.40 p.m. 2 E.A.'s. attempted to cross our line but were driven back by our anti-aircraft.

(a) Balloons.

At 3.15 p.m. 8 enemy balloons could be observed at the following true bearings from 0.21.d.80.85. 123, 133, 175, 86, 148, degrees.

7. ENEMY MOVEMENT.

During the bombardment of FLY BUILDINGS a party of enemy (25 in number) were observed to run along the ridge from FLY BUILDINGS and enter the Wood at HIGH FARM 0.18.c.2.2. Small parties were noticed throughout the day in a strong point around Pill Box, 0.17.d.65.95. A party of 5 or 6 approached M.G. Post at 0.11.d.90.85. from the GIANT at 6.45 p.m. see patrol report.

Several small parties were seen at intervals in vicinity of HOUTHEM. Considerable movement was observed round PILLEGREMS FARM and parties of 2 and 3 men were going backwards and forwards from this building in an easterly direction.

Enemy out posts were seen withdrawing to picket line in the early morning and were fired on by a Lewis Gun.

The following train movements were observed.

9.18 a.m. train from TENBRIELEN to WERVICQ

9.40 a.m. train from WERVICQ TO TENBRIELEN.

2.15 p.m. train from WERVICQ to TENBRIELEN.

3.0 p.m. train from COMINES to WERVICQ

3.30 p.m. train from WERVICQ to TENBRIELEN.

Gun flashes were observed from the following true bearings from 0.15.d.75.95. 80, 68, 86, 50, 140 degrees.

(a) Signalling.

At 8.5 a.m. lamp signalling from enemy line at true bearing 92 degrees from 0.15.d.75.25. estimated 400 yds. in enemy line

A red flare dropped from an enemy plane with no apparent result.

At 4.40 a.m. red flares bursting into pairs were followed by Machine Gun fire.

8. MISCELLANEOUS.

Smoke can be seen emitting from high chimney stack in WERVICQ - SUD. Smoke observed coming from several houses in HOUTHEM. The ground is beginning to freeze hard but NO MANS LAND is reported still wet and boggy in lowlying areas.

9. LOCATIONS

Unchanged.

Patrols reports from 6 a.m. 4th to 6 a.m. 5th Dec. 1917.

Annexe to Intelligence Summary No. 6.

No. 1 Patrol.

1 Officer and 11 O.R. at 5 p.m. moved out from O.23.c.15.55. to ascertain whether WAM FARM was still occupied and the extent of damage done by bombardment. On reaching road O.23.c.7.3. they discovered several demolished and unoccupied dugouts and came in contact with enemy's wire on Eastern side of hedge O.23.c.00.25. The wire is right up against the hedge and very strong (at least 15 foot thick. Enemy fired several flares and opened fire with Machine Gun from WAM FARM preventing patrol from advancing. The ground traversed is very boggy and difficult to cross. Owing to darkness and the thickness of wire it was impossible to ascertain extent of damage done to WAM FARM.

No. 2 Patrol.

At 5.15 p.m. 1 Officer and 11 O.R. moved out from O.23.a.25.50. to ascertain extent of damage done to RIFLE FARM, also if FARM was occupied. This patrol moved in a Southeasterly direction, and owing to darkness worked to far to the right of RIFLE FARM and reached a position halfway between RIFLE and JULY FARMS. Realising their position they moved in a Northerly direction where they observed an enemy party 20 strong moving to the East. Here the patrol took cover and observed flares being fired from a post a few yards to the South of RIFLE FARM. Several small parties were also seen and enemy appeared to be very alert. No wire was encountered. Owing to the frequency of flares patrol could not approach any closer to RIFLE FARM and returned by a direct line to O.23.a.25.20. at 6.40 p.m.

No. 3 Patrol.

1 Officer and 2 O.R. at 8.30 p.m. moved out to reconnoitre BEEK and WAM FARMS leaving our lines at a position where front line crosses WAMBEEK they moved in an easterly direction to a position 50 yds North of BEEK FARM but here the patrol was subjected to heavy Machine Gun fire from BEEK FARM and forced to withdraw. The patrol reports the ground to be very wet and practically impassable but the wire is not an obstacle. They heard voices 250 yds. east of BEEK FARM and are of the opinion there is a post in this position as flares were frequently fired from there.

No. 4 Patrol.

A patrol of 1 Officer and 3 O.R. left O.11.b.80.25. for the purpose of reconnoitring intervening ^{country} between the GIANT and TWINS and our line. The patrol left our position and proceeded along road O.11.b.6.0. (this road is sunken and about 3 ft. deep and has been heavily shelled) thence to O.11.d.80.85. but at this point they attracted considerable Machine Gun fire from O.11.d.90.85. The patrol then attempted to outflank a post by moving under cover of the hedge but the amount of water in shell holes prevented this action. Half an hour later 5 or 6 men were seen moving towards the post from the direction of the GIANT The TWINS were quite discernable but movement could not be noticed although considerable talking was heard. The patrol returned to our lines at O.11.d.05.25. at 8.30 p.m. A Machine Gun emplacement was investigated at O.11.d.4.4. and had traces of recent occupation also a shelf containing several Pineapple bombs.

-2-

No.5 Patrol.

At 4.5 p.m. a patrol of 1 Officer and 2 O.R. moved out from O.17.c.3.4. to reconnoitre FLY BUILDINGS and discover extent of damage caused by bombardment. The route followed by the patrol was O.17.c.87.05., O.17.d.2.1., O.23.b.3.9., O.17.c.8.3., On reaching point O.17.d.2.d. unusual movement was noticed in vicinity of FLY BUILDINGS. Moving forward to corner of fence at O.23.b.0.9 five groups of five men were seen moving northwesterly direction towards O.23.b.50.96. and others to number about 20 were detected working in vicinity. Exact nature of work could not be determined as darkness was approaching a small group of men as covering party noticed some 20 to 30 yards Northwest of working party. Total strength of party 50 to 60. Group of concrete structures suffered direct hits in today's bombardment but are capable of being placed in state of repair or utilised as shelters.

No.6 Patrol.

At 9 p.m. 1 Officers and 2 O.R. started out from O.23.a.2.5. to reconnoitre FLY BUILDINGS and discover damage caused by bombardment. They went to O.23.c.43.98., O.17.d.95.25. and then O.23.a.50.55. They report seeing about 20 men in small parties moving from Pill box O.23.b.55.75. and found enemy wire thick and hard to negotiate. On moving north to find gap saw three or four enemy working on top of pill box heard larger party working in rear of pill box. Patrol endeavoured to work round to the rear but owing to heavy wire entanglement this could not be done. At this position patrol was observed by the enemy and drew heavy Machine Gun fire forcing them to retire. Patrol returned at 11.30 a.m.

W. H. J. Jones
Major.
Brigade Major.
15th Australian Infantry Brigade.

15th AUSTRALIAN INFANTRY BRIGADE.

Intelligence Summary No.7.

From 6 a.m. 5th December to 6 a.m. 6th December 1917.

1. OPERATIONS.

(a) Artillery. Our Artillery was above normal during the twenty four hours. The Giant and Twins were engaged by the heavies from 8 a.m. to 4 p.m. and good shooting was observed. ONELET TR. in O.24.c. and O.30.a. was shelled consistently by the 18 pounders.

BEEK and WAN FARMS received attention from the 60 pounders, and enemy lines in P.2.b. & d. were shelled by the 60 pounders, also. Throughout the night intermittent fire was maintained on enemy tracks and known positions.

(b) Patrols. See annex.

(c) Machine Guns. Our Machine Guns were active and were engaged in harassing fire on the following targets:-

O.24.c.50.25.

O.24.d.50.40.

O.18.c.6.0.

and Road O.36.b.20.80 to O.30.d.25.20.,

Road O.30.d.25.80 to O.30.b.2.2.

Road O.30.b.30.22. X Road O.24.d.5.4.

O.24.c.90.90. to O.24.d.09.99.

Expenditure 18,000 Rounds.

(d) Trench Mortars.

Our Trench Mortars were active throughout the night.

Machine Gun positions in O.29.d.65.65. and O.29.d.60.60 were engaged with silencing effect. BEEK FARM, JULY FARM, RIFLE FARM, and WASP FARM and FLY BUILDINGS were fired on at irregular intervals.

At 11.30 p.m. enemy retaliated with 77s. on one of our mortars.

Expenditure 85 rounds.

2. IDENTIFICATIONS. Nil.

3. ENEMY SHELLING.

Enemy shelling was above normal throughout the period, Prince RUPERTS DUGOUTS, MANCHESTER STREET, OLGA TRENCH, and O.22.d.0. DELPORT FARM and DERRY HOUSE received only slight attention with 5.9s. and 77s. during the morning.

RAVINE WOOD and OLIVE TRENCH were shelled at irregular intervals, while ROSEBEKE VALLEY, GREEN WOOD, and ROSE WOOD were intermittently shelled with 5.9s. from P.14.a. and 77s. from HOUTHEM.

Those two batteries were silenced by our counter battery work.

MAHIEU FARM also received slight attention with 5.9s.

4. ENEMY ATTITUDE

Infantry normal. Artillery aggressive, having shown increased activity over the sector.

5. ENEMY DEFENCES.

The enemy have again been seen in strong point around Pill Box O.17.d.35.95.

A Machine Gun is mounted for aerial defence at true bearing 61 degrees from O.27.d.90.35. in O.24.a or b. A man was observed standing beside the gun and on one occasion the gun opened fire on our planes.

RIFLE FARM is wired with at least four belts of wire and the fourth belt being in the course of either construction or being strengthened (see patrol report).

Enemy night post is suspected at O.11.d.65.85.

6. HOSTILE AERIAL ACTIVITY.

Above normal. Enemy planes crossed our lines several times during the day and were active bombing our back areas throughout the night.

At 10.20 a.m. an E.A. flew at very low altitude over RAVINE WOOD and was driven off by our M.G. Fire.

At 10.50 a.m. an enemy plane was brought down near COMINES.

At 10.55 a.m. an E.A. was brought down near COMINES.

(a) Balloons.

The following Balloons were seen from 0.15.d.75.55. at true bearings :- 73, 143, 108, 70, 57, 56, and 63 degrees.

7. ENEMY MOVEMENT.

Very isolated infantry movement.
Increased train movement.

7.45 a.m. two men walking in a North easterly direction entered Pillegrom Farm.

7.50 a.m. a man working near PILL FARM; man seen with serial defence M.G. near 0.24.a. Parties of 2 or 3 at intervals in vicinity of Pill Boxes 0.17.d.65.95.

The following train movements were observed.

10 a.m. a train from WERVICQ to TENBRIELEN.

11.5 a.m. a train in WERVICQ.

11.15 a.m. " " from WERVICQ to GHELUWE.

11.50 a.m. " " " " " TENBRIELEN.

12.0 noon " " " TENBRIELEN to WERVICQ.

1.50 p.m. " " " WERVICQ to GHELUWE.

8. MISCELLANEOUS.

At 9.45 a.m. a large explosion was seen at GHELUWELT which burnt for 30 minutes.

Three small round balloons at a great height dropped papers over our line. These papers have been forwarded. It could not be ascertained whether balloon was dropped from aeroplane or automatically controlled.

State of Ground.

The ground is becoming frozen hard rendering NO MANS LAND very difficult to traverse as the ice breaks through in shell holes causing considerable noise.

9. LOCATIONS

Unchanged.

J. F. W. Jones
for Major.
Brigade Major.
15th Australian Infantry Brigade.

15th AUSTRALIAN INFANTRY BRIGADE.

Patrol Report onnexe to Intelligence Summary No.7.

Our patrols were active from 5.30 p.m. to dawn.

No.1 Patrol. For the purpose of reconnoitring RIFLE FARM 2 Officers and 7 O.R. moved from O.23.a.25.20 at 5 p.m., then in a Southeasterly direction until they reached O.23.c.95.00. Owing to the frequency of flares and consistant bursts of Machine Gun fire the patrol was unable to approach any closer to RIFLE FARM. They remained in this vicinity for xone hour but were unable to obtain any information and returned by the same route at 7 p.m.

No.2 Patrol.

For the purpose of reconnoitring RIFLE FARM and securing an identification 2 Officers and 5 other ranks left O.23.a.25.20. at 9. p.m. This patrol moved in direction of O.23-Central. and then worked slightly South. Before reaching the hedge surrounding RIFLE FARM this patrol passed through three belts of enemy wire, the first being a low wide trip wire, the second strong and thick and the third a trip wire with a distance of some 40 yards between the first and third belts. On arriving at the hedge an enemy working party 20 to 30 strong were detected wiring on a large belt of wire just inside the hedge after waiting ten minutes the patrol fired a salvo of 14 Mills. bombs, and opened fire with rifles. The enemy retaliated with stick bombs, and flares were fired immediately, also a large ground flare. Our bombs burst well among the party and casualties were inflicted. Owing to the Machine Gun Fire and the large amount of wire both behind and in front of us it was impocible to proceed to obtain identification. There appeared to be only one Pill Box, in the vicinity. and it showed no traces of the recent bombardment. The patrol returned at 7 p.m. by the same route.

No.3 Patrol.

For the purpose of reconnoitring WAMBEKE VALLEY / N.C.O. and four men at 10.25 p.m. proceeded from O.23.c.15.55. in a Southeasterly direction until reaching the WAMBEKE at O.23.c.3.2. thence in a easterly direction to cross roads O.23.c.8.2. then in a northerly direction for a hundred yards. The patrol remained in this position for half an hour and then returned in a direct line to O.23.c.15.25. They report no enemy movement, but M.G.Fire in BEEK FARM.

No.4 Patrol.

To investigate enemy sap O.29.c.7.2. 1 Officer and 6 O.R. proceeded at 5 p.m. in a southeasterly direction to O.29.c.7.2. they found the sap to be unoccupied and lightly wired. The patrol remained in the sap for one hour then proceeded O.29.c.9.5. where they heard enemy wiring and voices and were subjected to heavy low M.G.fire. The patrol returned to O.29.c.05.50. at 7.30 p.m. Owing to the frozen state of the ground it was very difficult to travel in silence.

No.5 Patrol.

For the purpose of reconnoitring the ground to and approaching the Giant O.12.c.4.7. a patrol of 1 Officer and 4 O.R. left our lines at Post O.11.d.25.20. at 6.30 p.m.

-2-

No.5 Patrol.Cont'd.

Patrol worked in a Southeasterly direction to metal road (in bad condition) at O.11.d.4.4. then proceeded up road to within ten yards of road junction at O.11.d.65.85. At this point the patrol was halted by an enemy sentry an attempt to work round the post failed owing to the nature of the ground so patrol withdrew and moved to a point O.11.d.9.8. As the ground was impassable the patrol returned to our line on the same route at 8.30 p.m. ~~The-Twins-were-found to-be-surrounded-by-very-thick-wire~~ They report the ground to be frozen hard and owing to the breaking of ice movement was easily detected thus disclosing their position to the enemy.

No.6 Patrol.

For the purpose of reconnoitring (a) the ground in front of our line (b) to observe the position and depth of enemy wire (c) to locate enemy posts in front of the Twins. The patrol moved in a Northeasterly direction to O.11.d.15.30 and followed the hedge to O.11.d.75.35. The ground as previously reported is practically impassable and movement causes considerable noise. The ground in vicinity of Twins is rough and covered with thick isolated patches of wire. No enemy posts were located nor traces of any movement observed. Suspected post at O.11.d.65.85. could not be definitely ascertained.

No.7 Patrol. For the purpose of locating enemy post. One Officer and three other ranks at 7.30 p.m. moved out from O.17.c.7.4. JUNCTION BUILDINGS thence in northerly direction to O.17.d.5.9. and remained at this point for an hour. Machine Gun fire from O.17.d.9.9. caused trouble. Patrol returned at 9.30 p.m. report no enemy movement.

Four patrols continuously patrolled the left centre Battalion frontage and report movement very difficult owing to the frozen nature of the ground. No enemy movement being observed but consistent Machine Gun Fire.

[Handwritten Signature]
Major.
for/Brigade Major.
15th Australian Infantry Brigade.

15th AUSTRALIAN INFANTRY BRIGADE.

Intelligence Summary No.8.

From 6 a.m. 6th December to 6 a.m. 7th December.

1. OPERATIONS.(a) Artillery.

Our artillery was above normal. BEEK FARM, WAMM FARM and RIFLE FARM were shelled intermittently by 6" guns from 8 a.m. to 4 p.m. and BAB FARM, O.23.d.6.9., was heavily shelled by the heavies and 18 pounders. OMELET Trench was shelled with 6" and shrapnel at irregular intervals and FRONT FARM also received heavy shelling, while FLY BUILDINGS and JULY FARM were consistently shelled throughout the day. Several direct hits were obtained on the former but damage appeared to be slight. Intermittent fire was carried out on enemy tracks and approaches throughout the night.

(b) Patrols.

The usual patrol activity was maintained special attention being given to RIFLE FARM.

No.1 Patrol.

For the purpose of reconnoitring RIFLE FARM and ambushing enemy post, a fighting patrol of two Officers and 20 O.R. moved out at 4.45 p.m. from picquet line O.23.c.15.63. The patrol moved in a North-easterly direction until reaching position O.23.c.1.9. where they were subjected to heavy rifle fire. Here the enemy were engaged with Mills grenades, Rifle and Lewis Gun fire. The enemy retaliated with machine gun fire. The patrol extended and endeavoured to surround the position and succeeded in penetrating two belts of wire (wire in good order) but the remaining two belts prevented any further advance. As the patrol had expended their ammunition and bombs they were forced to return. Heavy casualties were inflicted on the enemy who appeared to be very alert. Enemy casualties estimated 15 to 20. The patrol report, four belts of wire round RIFLE FARM and at least four M.G.'s. in the Pill Box. Intervening ground was very difficult to traverse.

No.2 Patrol.

For the purpose of ascertaining the result of bombardment on FLY BUILDINGS, One Officer and two O.R. moved out from WALL FARM at 4.15 p.m. and travelled on the following route O.17.c.90.05. - O.17.d.1.1. - O.23.b.1.9. - O.23 ..b.30.95.- O.23.a.9.8. thence returning to picquet line.

The patrol reports FLY BUILDINGS being strongly wired with irregular belts of French wire, well concealed and in places overgrown with grass.

Enemy movement was observed in and around field O.23.b.4.7.

The patrol were fired on by M.G. from O.17.d.4.2. & flares fired from a post in O.24.b.30.75.

FLY BUILDINGS have been damaged but could not be sufficiently approached to ascertain the extent, as wire presents a serious obstacle.

Three patrols from the right and left flank Battalion patrolled NO MANS LAND continuously from 6.30 p.m. to dawn and report enemy attitude to be very quiet. There is a consistent use of flares from various points.

FLY BUILDINGS, RIFLE FARM, WAMM FARM & BEEK FARM are certainly the centres of all activity.

-2-

(c) Machine Gun.

Our M.G.s. were above normal during the twenty four hours. Enemy low flying planes were driven back by *our* fire. Enemy party moving from Pill Box in vicinity of Trout Farm were fired on several casualties being inflicted. The following targets were harrassed from 4.30 p.m. to dawn:-

SPUD FARM 0.18.b. and
Road running through same.

PILLEGREMS FARM 0.24.A. - POLL HOUSE 0.18.a. -
Rd. 0.24. .9.9. to 0.24.d.1.9. 0.24.c.5.4. - 0.24.a.5.2.
and known enemy posts and approaches.

Expenditure of Ammunition 24,000 rounds.

(d) Trench Mortars.

The trench mortars engaged enemy posts and M.G.'s. and were particularly successful in silencing the latter. A Machine Gun at 0.29.b.10.45. was also silenced with two shells.

RIFLE FARM & FLY BUILDINGS, were shelled at irregular intervals,

The expenditure of ammunition being 90 rounds.

2. IDENTIFICATIONS.

Prisoner who wandered into our lines in 0.23.b. belonged to the 7th Coy., 93 I.R. This identification is normal.

3. ENEMY SHELLING.

Enemy artillery was not so active as in the preceding 24 hours. Olive Trench and Ravine Wood only receiving slight attention, while WALL FARM, TORREKEN CORNER, and vicinity of VERNE DUMP 0.21.c. was only lightly shelled with 77s. firing from the direction of WERVICQ. The Right Battalion front line was also shelled with 77s. at intervals during the day and night. A few gas shells fell in WYTSCHAETE at 0.19.c. about 11 a.m. At 4.30 p.m. DERRY HOUSE and vicinity was shelled with 5.9, H.E., and gas shells.

4. ENEMY ATTITUDE.

Quiet. Both infantry and artillery were normal.

5. ENEMY DEFENCES.

Machine gun post located at 0.29.b.05.30. This is apparently only a night post. Four M.G.'s were located in RIFLE FARM (see Patrol report) surrounded by at least 4 belts of wire. Enemy anti-aircraft M.G. located at FARM HOUSE 0.18.c.45.85.

6. ENEMY AERIAL ACTIVITY.

E.A.'s were particularly active between 7 and 8 a.m. A ^{flying} Plane at a very low altitude over our left flank Battalion front line, was driven off by Machine Gun fire. A few planes attempted to cross our lines at intervals during the day, but were driven back by anti-aircraft. Odd planes flying at very high altitude succeeded in crossing our lines during the night and bombed our back areas.

Balloons.

Enemy observation balloons in direction of COMINES and KORTEWILDE were seen during the morning.

7. ENEMY MOVEMENT.

Visibility was bad owing to ground mist. A small party were seen using shovels at Pill Box, and at 7.30 a.m. another party of 6 men working in rear of OMELET TRENCH; Movement again seen at Pill Boxes 0.17.d.65.95. Isolated individual movement was noticed throughout the period.

Signalling.

Red lamp was signalling from HOUTHEM CHURCH at intervals of about an hour throughout the night. Enemy made consistent use of white flares.

8. MISCELLANEOUS.

Several papers printed in English dropped from German Balloons have been found in vicinity of OOSTTAVERNE WOOD.

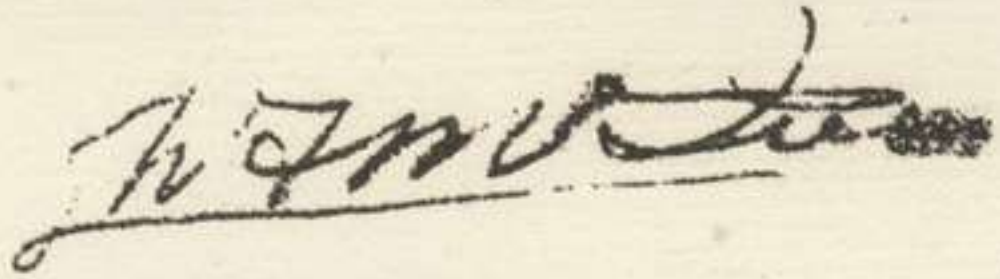
These papers refer to the enemy advance in ITALY.

State of Ground.

Patrols report NO MANS LAND to be frozen hard and very difficult to traverse.

9. LOCATIONS.

Unchanged.



Lieut.
for Brigade Major.
15th Australian Infantry Brigade.

15th AUSTRALIAN INFANTRY BRIGADE.

Intelligence Summary No.9.

From 6 a.m. 7th December to 6 a.m. 8th December 17.

1. OPERATIONS.(a) Artillery.

Our artillery continued the usual activity, particular attention being given to FLY BUILDINGS, BEEK FARM and RIFLE FARM. Good shooting was registered on FLY BUILDINGS from 10 to 11 a.m.

Our heavies and 18 pounders intermittently shelled RIFLE FARM & BEEK FARM.

Square 12.b. was kept under searching fire and OMELET TRENCH also received attention throughout the day from our 18 pounders. The heavies were engaged on back areas particularly COMINES and vicinity.

At irregular intervals throughout the night fired on enemy tracks and approaches.

(b) Patrols.

Our patrols were active but owing to extreme darkness observation was difficult.

No.1.Patrol.

For the purpose of reconnoitring FLY BUILDINGS and wire, 1 N.C.O. and two men moved at 11 p.m. from our line at approximately O.23.a.95.90. Moving in an easterly direction to a point O.23.b.30.95. and remaining in this position for one hour. Enemy movement could be heard and torch flashes seen at FLY BUILDINGS. From this position the patrol moved in a northerly direction along enemy wire which they report to be strong and intact. No gaps being found. The patrol returned to place of departure in our line at 2 a.m.

No.2 Patrol.

For the purpose of locating enemy patrols, a patrol of 1 N.C.O. and 4 men left O.11.d.25.80 at 7.30 p.m. & moved in a southeasterly direction along hedge to Road at O.11.d.4.6. then down Road to post O.11.d.05.25. In returning the patrol made a good detour into NO MANS LAND but no enemy patrols were encountered.

No.3 Patrol.

For the purpose of reconnoitring WAMBEKE VALLEY a patrol of 1 Officer and 4 O.R. left our line at O.23.c.15.55. at 3.20 a.m. and then moved in a southeasterly direction to bend in road at O.23.c.4.4., thence in a southerly direction along the Road until reaching the WAMBEKE which they followed in an easterly direction to O.23.c.8.2., remaining there for half an hour. The patrol returned in a direct line to point of departure.

They report no trace of enemy and NO MANS LAND to be very quiet.

The Right Battalion patrols continuously traversed NO MANS LAND from 6.45 p.m. to 4.30 a.m. and maintained communication with the flank units. They report enemy attitude to be very quiet, no enemy being encountered or movement heard.

(c) Machine Guns.

The usual activity was maintained.

Enemy planes attempting to cross our line were successfully driven off by M.G. Fire.

Throughout the night M.G. were engaged in harrassing fire on the following targets:- X roads in O.18.b., POLL HOUSE O.18.a.75.55., Bridge over Canal O.12.b., HOLLEBEKE CHAU., O.24.d.5.4., O.24.c.78.02., O.30.c.95.50., O.30.b.45.29. and O.30.d.05.00.

Total expenditure of ammunition 18,000 rounds.

265

(d) TRENCH MORTARS.

The trench mortars were successful in silencing enemy M.G.guns at 0.29.d.60.80,- 0.23.d.45.50. - and 0.29.b.15.65.

FLY BUILDINGS, RIFLE FARM, and the TWINS were fired on at irregular intervals. An enemy working party at 0.23.b.5.2. was dispersed by our fire just approaching dark.

2. IDENTIFICATIONS. Nil.

3. ENEMY SHELLING.

Enemy shelling has been below normal throughout the period. 0.27.d.- 0.34.a. - and 0.16.a.- were lightly shelled with 4.2s and H.E.

A few gas shells fell round PRINCE RUPERTS dugouts. The enemy shelling was very distributed with no concentrated fire.

4. ENEMY ATTITUDE.

Both artillery and infantry below normal.

5. ENEMY DEFENCES.

Enemy post is suspected at 0.17.d.65.95.

Enemy M.G. at 0.29.b.05.30. did not fire during the night. (this gun was particularly active on previous night).

Enemy party seen repairing FLY BUILDINGS at 8 p.m. and were fired on by our trench mortars.

Trench Mortars. Nil.

6. HOSTILE AERIAL ACTIVITY.

Occasional planes attempted to cross our lines but were driven off by our M.G. fire and Anti-Aircraft fire.

Balloons. Nil.

7. ENEMY MOVEMENT.

Visibility was very low owing to the hazy atmosphere thus rendering observation very difficult.

Individual movement was observed at Pill Farm 0.24.a.4.3.

Enemy movement observed at enemy Aerial Defence M.G. at the bearing 61 degrees true from 0.27.d.90.65.

Five men were observed at suspected enemy post 0.17.d.65.95: two men were seen apparently repairing telephone wire at 0.18.d.50.05.

Signalling.

At 4.30 p.m. enemy was signalling with a red lamp in direction of HOUTHEM, and at 4.45 p.m. signalling with a lamp from direction of SQUARE FARM.

Flares.

Enemy made consistent use of white flares throughout the night, and occasional red flares bursting into two stars were fired without apparent result.

8. MISCELLANEOUS.

Our artillery caused a fire which burnt for about two hours in vicinity of HOUTHEM.

9. LOCATIONS. Unchanged.

[Handwritten signature]

Lieut.
for Brigade Major
15th Australian Infantry Brigade.

15th AUSTRALIAN INFANTRY BRIGADE.

Intelligence Summary No.10.

From 6 a.m. 8th December to 6 a.m. 9th December 17.

1. OPERATIONS.(a) Artillery.

Our artillery was not as active as in the previous 24 hours but consistent slow fire was maintained on enemy communications and centres of movement. KORTEWILDE, HOUTHEI, and COMINES, were searched by the heavies and FLY BUILDINGS, RIFLE FARM, SQUARE FARM, O.30.b.5.2. received attention by our 18 pounders at irregular intervals.

At 6.15 a.m. a five minutes shoot was carried out on RIFLE FARM, this was followed by a box barrage for 10 minutes when the fire was again directed to RIFLE FARM. At 8.15 p.m. fire was again concentrated on RIFLE FARM.

Throughout the night the usual intermittent fire was maintained on enemy trenches and approaches..

(b) Patrols.

The usual patrol activity was maintained throughout the night, but owing to extreme darkness movement was very difficult and observation rendered impossible.

No.1. Patrol.

One N.C.O. and 2 men continuously patrolled NO MANS LAND in front of Right Battalions lines but no enemy movement was observed.

No.2. Patrol.

For the purpose of reconnoitring WAMBEEK VALLEY, one Officer and 3 O.R's. left O.23.c.15.55. at 5 p.m. The patrol moved in a southeasterly direction until reaching WAMBEEK O.23.c.5.2. then in an easterly direction to Road Junction at O.23.c.9.2. where they remained for half an hour, then returned by a detour to O.23.c. Central place of departure. They report NO MANS LAND to be very quiet, no movement being observed and experienced difficulty owing to the darkness.

No.3 Patrol.

For the purpose of reconnaissance a patrol of one N.C.O. and two men moved out from our lines O.17.c.75.35 at 4.45 p.m. and proceeded in an easterly direction for about 150 yds. where they reached enemy wire which they followed to approx. O.23.b.1.8., thence to O.23.a.90.85 and returned to our line at point of departure at 8.15 p.m. The patrol report M.G. activity at FLY BUILDINGS, otherwise enemy attitude very quiet.

No.4 Patrol.

A reconnoitring patrol of 1 N.C.O. and three men moved out from O.17.c.75.35 at 11 p.m. and proceeded to O.17.a.9.1. and patrolled the whole frontage to O.23.a.90.85 returning at 2.45 a.m.

The patrol report M.G. position at O.17.d.7.6. and a Minnewerfer firing near Pill Box at O.17.b.6.2. Flash of this mortar was very conspicuous.

No.5 Patrol.

For the purpose of locating enemy and securing a prisoner a fighting patrol of 1 Officer and 9 other ranks moved out from post 2 O.11.(O.11.d.2.7) at 7 p.m.

The patrol followed the line of trees from post 2. O.11. across the road and then due east to approximately O.11.d. 8.7.. After searching this locality and failing to find any enemy posts, the patrol moved in direction of the Twins, but were unable to get beyond Rd. Junction O.11.d.70.85. on account of heavy enemy wire, so patrol returned to our line at O.11.d.2.7. at 11.15 p.m. The patrol report no enemy encountered but hammering and movement of iron bars was heard from vicinity of Twins. M.G.'s were not active.

(c) Machine Guns.

Our Machine Guns were active throughout the period. Hostile party at O.17.b.90.30. were dispersed by our fire (casualties claimed).

Enemy tracks and approaches were swept continuously and the following targets were harrassed:-

SPUD, MURPHY, and FAT FARMS and road running through O.18.b., enemy tramway system O.24.a and b., road leading to bridge O.12.b., KIWI & RIFLE FARM, trench O.24.a.40.40 to O.24.e.80.40., O.24.c.20.00. to O.24.d.15.95.

Expenditure of ammunition 24,000 rounds.

(d) Trench Mortars. Active.

In accordance with artillery operations the trench mortars fired on RIFLE FARM at 6.15 p.m.

M.G. at O.29.d.4.6. was silenced with 3 rounds. This M.G. did not open fire again during the night.

BEEK FARM, FLY BUILDINGS, THE TWINS, and M.G. position O.29.e.8.3. were fired on at irregular intervals.

Total expenditure of ammunition 200 rounds.

2. IDENTIFICATIONS Nil.

3. ENEMY SHELLING.

Enemy artillery was exceptionally quiet throughout the 24 hours. WAIBEEK VALLEY O.22.c. to O.22.a. received slight attention from 5.9s. firing from direction of COMINES. The vicinity of ORANGE TRENCH and GUN FARM in O.27.a. was lightly shelled with 77s and 4.2s. WALL FARM also received slight shelling with 77s from battery firing from direction of HOUTHEN.

4. ENEMY ATTITUDE.

Both artillery and infantry below normal. Enemy feebly retaliated to our bombardment of RIFLE FARM.

5. ENEMY DEFENCES.

Enemy M.G.'s appeared to be alert, although inactive. A new line of camouflage 300 yards long, has been erected along Road north of SQUARE FARM O.30.b.5.2. The northern end has not been completed only the upper half having been erected.

Enemy infantry post located at O.17.b.25.50.

TRENCH MORTARS.

Enemy fired 15 rounds from a light trench mortar in vicinity of RIFLE FARM. These shots fell short in NO MANS LAND.

6. HOSTILE AERIAL ACTIVITY.

E.A.'s were not active. At 2 p.m. an E.A. flying at a very high altitude crossed our line but was driven back by Anti-aircraft.

Balloons.

Enemy balloons were up all day at true bearings 90° and 115° from O.15.d.75.55.

7. ENEMY MOVEMENT.

Individual movement was observed at PILLEGREMS FARM; man with broad white band on his arm entered SQUARE FARM at 11.55 a.m.; two men with light blue uniforms (apparently new) entered Pill Box 200 yds. north of Square Farm. Isolated parties of two or three were again, seen throughout the day at enemy post O.17.d.65.95. Enemy observer was seen on top of Pill Box BAB FARM. Smoke was also seen rising from this position.

7. ENEMY MOVEMENT Cont'd.

The following train movements were observed:-

- 11.20 am. train from COMINES to WERVICQ.
- 11.30 a.m. " moving towards WERVICQ.
- 11.40 am. " from LANVORDE to TENBRIELEN.
- 12.0 noon " GHELUWE to TENBRIELEN.
- 12.30 p.m. " " " "
- 12.50 p.m. " MENIN to WERVICQ.
- 2.45 p.m. " GHELUWE to TENBRIELEN.
- 1.50 p.m. " COMINES to WERVICQ.
- 2.50 p.m. " MENIN to WERVICQ.
- 3.0 p.m. " WERVICQ to GHELUWE.

Signalling.

Lamp signalling at 4 p.m. from COMINES.

Flares.

Double red flares were fired from vicinity of where enemy shots fell short. Enemy made constant use of white flares throughout the night.

8. MISCELLANEOUS.

A very bright light apparently 6 jets of brilliant white flame lasting for about 12 minutes was seen at true bearing 77 degrees from O.22.d.90.66.

State of Ground.

The ground in NO MANS LAND is now dry and firm (since patrol reported this rain has fallen).

9. LOCATIONS. Unchanged.

W. J. ...

Major.
for Brigade Major.
15th. Australian Infantry Brigade.

265

SECRET.

Copy No. 2!..

15th AUSTRALIAN INFANTRY BRIGADE ORDER No. 135.

Ref:- BELGIUM
Sheet 28 1/10,000.
CALAIS
Sheet 13 1/100,000.

10th December, 1917

1. The 5th Australian Division (less Artillery) is being relieved by the 1st Australian Division (less Artillery) between the 13th and 17th December, 1917.
2. The 15th Australian Infantry Brigade (plus 25th Machine Gun Company) is being relieved by the 2nd Australian Infantry Brigade (plus 21st Machine Gun Company) during the 14th and night 14th/15th December in the left sector of the Divisional Front.
3. Reliefs will take place in accordance with attached table, all details not provided for in this order being mutually arranged between Commanding Officers concerned.
4. All maps, trench stores, aeroplane photographs, defence schemes etc. will be handed over on relief and receipts exchanged. Copies of these receipts will be forwarded to Brigade Headquarters as soon as possible after relief.
5. The completion of reliefs will be reported in code to Brigade Headquarters.
6. Special Administrative Instructions will be issued separately.
7. The Command of the Sector will pass to the B.G.C. 2nd Australian Infantry Brigade on the completion of relief, when Brigade Headquarters will close at REGENT DUGOUTS and reopen at KEMMEL CHATEAU.
8. ACKNOWLEDGE.

J. J. ...
Major,
Brigade Major,

15th Australian Infantry Brigade.

Issued at 9 p.m.

To.	Copy No.	Copies to :-	
57th Battalion	1.	112th Infantry Brigade	12.
58th Battalion	2.	Oostverne Group Artillery	13.
59th Battalion	3.	Hollebeke Group Artillery	14.
60th Battalion	4.	29th A.A.S.C.	15.
15th I.G. Company	5.	15th Field Coy. A.E.	16.
15th L.T. I.	6.	15th Field Ambulance	17.
25th I.G. Company	7.	Area Comdnt. KEMMEL	18.
No. 4 Signal Section	8.	B.G.C. 15th A.I. Brigade	19.
Copies to :-		Staff Captain	20.
5th Australian Division	9.	War Diary	21-23.
2nd Aust. Inf. Brigade	10.	File	24.
8th Aust. Inf. Brigade	11.		

T A B L E
TO ACCOMPANY 15th A.I. BRIGADE ORDER No. 135.

DATE	UNIT	FROM	TO	TO BE RELIEVED BY	REMARKS.
1 st and night 14th/15th December.	59th Battalion	LINE RIGHT	LINDENHOEK CAMP	5th Battalion	(a) No movement of troops East of the MESSINES - WYTSCHAETE RIDGE before 4.30 p.m. (b) Incoming Units will be warned against unnecessary movement in areas under observation by the enemy (c) As much of the relief as possible to be completed during daylight.
-ditto-	60th Battalion	LINE RIGHT CENTRE	RAVILLES CAMP	6th Battalion	
-ditto-	52th Battalion	LINE LEFT CENTRE	KEMMEL	8th Battalion	
-ditto-	57th Battalion	LINE LEFT	ROSSIGNOL CAMP	7th Battalion	
-ditto-	15th M.G. Coy.	LINE	LA POLKA FARM	2nd M.G. Coy.	
-ditto-	15th L.T.M.B.	LINE	KEMMEL VILLAGE	2nd L.T.M.B.	
-ditto-	25th M.G. Coy.	LINE	KEMMEL CAMP	21st M.G. Coy.	

APPENDIX 14

SECRET.

ADMINISTRATIVE INSTRUCTIONS

to accompany

15th Aust. Inf. Brigade Order No. 135.
Dated 10.12.17.

11.12.17.

1. The 2nd Australian Infantry Brigade is relieving the 15th Australian Infantry Brigade in the left Divisional Sector on night 14th/15th inst.
2. Arrangements will be made forthwith to prepare all handing over lists.
3. Care must be taken to discriminate between Trench and Area Stores and Mobilization or Unit Stores. Mobilization and Unit Stores must under no circumstances be left in the Area.
4. All parties as detailed in Brigade Tactical Working Party Table No.3. will be relieved on 14th inst. Representatives of parties in forward areas will meet their reliefs at LAMP POST CORNER (O.19.c.4.7.) at 10 a.m. on 14th inst. and guide them forward.
5. Officers in charge of Gum Boot Stores will not leave their stores until all boots taken over by them have been accounted for and receipts obtained. Units will ensure that all gum boots in their possession are returned to stores.
6. When handing over Ammunition Dumps, the name of Dump and map location will be quoted on the receipt.
7. All receipts must be legibly made out. Rank, name, and unit must be stated of both the handing over and receiving Officer.
8. Nucleus will proceed to respective Camps as laid down in 15th Aust. Inf. Brigade Order No. 135 at 4 p.m. on 14th inst. Brigade Representative IRISH HOUSE will ensure that Camp and vicinity is handed over in a clean and sanitary condition.
9. Band of 59th Battalion will rejoin unit on 14th inst. and will be rationed by 59th Battalion as from 15th inst.

[Handwritten Signature]
Captain.
Staff Capt.

15th Australian Infantry Brigade.

Issued to all recipients
of Order No. 135.

15th AUSTRALIAN INFANTRY BRIGADE.

Intelligence Summary No. 11.

From 6 a.m. 9th Dec. to 6 a.m. 10th December 1917.

*

1. OPERATIONS.(a) ARTILLERY

The usual artillery activity was maintained. From 11 p.m. to 1 a.m. RIFLE & BEEK FARMS were shelled by our 4.5s and 6" guns; good shooting was registered.

From 8 p.m. to 10 p.m. FLY BUILDINGS, RIFLE FARM, and WAM FARM were engaged by the 18 pounders and heavies. OMELET TRENCH in O.30.a. was intermittently shelled with 18 pounders. The TWINS and GIANT were also kept under fire at irregular intervals. In response to message from front line stating enemy relief was in progress at FLY BUILDINGS our artillery concentrated fire on that position.

Throughout the night enemy approaches and centres of activity were kept under intermittent fire.

(b) PATROLS.

Our patrols were active through the night but the extreme darkness prevented observation of enemy movement.

No. 1 Patrol.

A reconnoitring patrol of 1 Officer and 2 O.R. moved out from our line O.17.c.6.4. and proceeded to O.23.b.80.20. where they reached enemy wire; then in a northerly direction to O.17.b.2.3., returning in a direct line to our picquet. The patrol report NO MANS LAND to be very quiet; voices were heard at FLY BUILDINGS and O.17.b.6.2.

Enemy wire is a rough apron type and damaged in places

No. 2 Patrol.

A reconnoitring patrol of 1 N.C.O. and two men moved out from our line at O.17.c.6.4 at 12.45 a.m. and proceeded towards FLY BUILDINGS. On nearing objective two enemy parties of about 8 men each in single file were observed approaching FLY BUILDINGS. The patrol returned at once and reported this to O.C. front line, who informed artillery and Stokes Mortars that relief was in progress. Good shooting was observed by both artillery and Stokes Mortars.

The patrol further report Minnenwerfer firing at O.17.b.2.3. and the ground wet and slippery and difficult to traverse.

No. 3. Patrol.

A reconnoitring patrol of 1 N.C.O. and 3 men left post 2. D.11. (O.11.d.25.80) at 5.30 p.m., and proceeded to Road O.11.d.65.80 then along hedge O.11.d.95.85, O.11.b.9.0., O.11.b.98.30., O.11.b.95.27., O.12.a.25.20, then along hedge and returned to post 5. O.11 (O.11.b.9.4.)

No enemy movement was seen, and machine guns were inactive.

No. 4 Patrol.

A reconnoitring patrol of 1 N.C.O. and 3 men left post 3. O.11. (O.11.b.4.1.) at 10.30 p.m., and proceeded south to hedge O.11.d.45.30 and returned to post 1. O.11 (O.11.d.05.25) at 11.50 p.m. They report NO MANS LAND very quiet, and Machine Guns inactive.

No. 5 Patrol.

For the purpose of reconnoitring WAMBEEK VALLEY a patrol of 1 Officer and 3 O.R.'s. moved out from O.23.c.15.55 at 5 p.m.

They moved southeasterly until reaching WAMBEEK at O.23.c.5.2. then easterly to Road Junction O.23.c.85.25. here they remained for half an hour. The patrol worked northwards along Road to O.23.c.75.40 then in direct line to place of departure.

They report enemy attitude exceptionally quiet.

-2-

No. 6 Patrol.

The right Battalion patrols continuously patrolled NO MANS LAND, and maintained communication with flank units throughout the night. They report enemy very quiet. Movement difficult.

(c) MACHINE GUNS. Active.

Enemy tracks, approaches, and centres of activity in O.18 and 24 were particularly harrassed from 6 p.m. to dawn. Fire was also concentrated on FLY BUILDINGS, in response to report of relief being in progress.

Expenditure of ammunition 28,000 rounds.

(d) TRENCH MORTARS.

A Machine Gun O.29.d.2.9 was successfully silenced. Observers report direct hit on M.G. O.29.a.95.40. During enemy relief mortars were directed on FLY BUILDINGS.

The TWINS was shelled at irregular intervals.

Expenditure of ammunition 90 rds.

2. IDENTIFICATIONS Nil.3. ENEMY SHELLING.

Enemy shelling was below normal. WALL FARM, PIONEER LANE O.16.c., and OMEGA TRENCH O.22.a., was lightly shelled with 77s in direction of HOUTHEN.

DERRY HOUSE, O.P. Mahieu Farm, ORANGE TRENCH O.27.b., received slight attention from guns firing from true bearing 89 degrees from O.27.d.90.65.

Gas shells fell round Bn.H.Qrs. O.20.b.2.2.

4. ENEMY ATTITUDE.

Artillery and Infantry quiet.

Slight M.G. activity.

5. ENEMY DEFENCES.

Minnenwerfer position located just in rear of GREEN FARM (approx. O.17.b.6.4.) this mortar fired on our posts O.11., and 4. O.17. respectively. Another trench mortar was located at O.17.b.20.30.

6. HOSTILE AERIAL ACTIVITY. Nil.7. ENEMY MOVEMENT

Owing to poor visibility, observation of enemy movement was rendered very difficult. Individual movement was observed at LAKE FARM.

Enemy relief observed (See Patrol Report). Isolated movement was observed round Pill Farm O.24.a.4.3.

Signals. Red lamp was observed signalling at 80 degrees true from O.27.d.90.65.

Flares. - Enemy made consistent use of white flares during the night.

8. MISCELLANEOUS.

State of Ground. - The ground is very wet and slippery rain having fallen during the day.

9. LOCATIONS. Unchanged.

[Handwritten Signature]
Lieut.
for Brigade Major.
15th Australian Infantry Brigade.

SECRET.

Copy No.....

15th AUSTRALIAN INFANTRY BRIGADE ORDER No. 136.

Ref:- BELGIUM
Sheet 28 1/40,000
CALAIS
Sheet 13 1/100,000

11th December, 1917.

-
1. (a) The 15th Australian Infantry Brigade Group is moving to the PARENTY Area on the 14th and 15th December, 1917.
 - (b) For the purpose of this move, the group is to consist of 15th Brigade Headquarters - 57th - 58th - 59th - 60th Battalions - 15th and 25th Machine Gun Companies - 15th L.T.M.B. - 15th Field Company A.E. - 15th Field Ambulance and the 32nd Battalion of the 8th Australian Infantry Brigade.
 2. (a) All Transport (less that shewn in attached Table "A") will move by road in accordance with attached Table "B".
 - (b) All personnel and the transport shewn in attached Table "A" will move by rail in accordance with attached Table "C".
 3. The following transport will report to Units on the 14th December from the D.A.C. :-

15th Brigade Headquarters	One G.S. Wagon.
Each I.G. Company	-ditto-
15th L.T.M.B.	-ditto-
15th Field Company A.E.	-ditto-
15th Field Ambulance	-ditto-
Each Battalion	Two G.S. Wagons.
 4. (a) As the Transport shewn in attached Table "A" will not reach Units until the day after arrival in the new area, all necessary cooking utensils will be carried on the train or on motor lorries which will report to Units on the 15th December at an hour to be notified later. These lorries will proceed direct to the billeting areas.
 - (b) Second Blankets and all necessary baggage will be stacked at the station on the morning of departure and loaded on to the personnel trains.
 - (c) Motor lorries will meet trains on arrival to convey the above mentioned stores etc. to the billeting areas.
 5. (a) The transport train (vide attached Table "A") will leave BAILLEUL Station at 6.0 p.m. and arrive at WIZERNES at 8.0 p.m. on the 15th December.
 - (b) Personnel and transport proceeding by this train will be billeted during the night 15th/16th December at WIZERNES under arrangements to be communicated separately.
 6. Supply arrangements will be as under :-
 - (a) For troops moving by rail :-
 - 14th December - No issue.
 - 15th December - Issue at entraining station under supervision of Q.M.'s.
 - 16th December - Double issue at BEAUCORRY for consumption on 17th and 18th December except for 32nd Battalion, 15th Field Company and 15th Field Ambulance who will draw from SAMER.
 - (b) For troops moving by road :-
 - 14th December - No issue.
 - 15th December - Refill at RENESCURE Church for consumption on 16th.
 - 16th December - Refill at THIEMERONNE for consumption on 17th and 18th.
 - 17th December - Draw rations for consumption on 19th December from BEAUCORRY except 15th Field Company and 15th Field Ambulance who will draw from SAMER.

(2)

- 7. Railhead will move to SAMER on the 15th December.
- 8. The Divisional Reinforcement Wing closes at CAESTRE on the 14th December and reopens at SAMER on the same day.
- 9. Brigade Headquarters will close at KEMMEL CHATEAU at 9.0 a.m. on the 15th December and reopen at PARENTY on arrival.
- 10. ACKNOWLEDGE.

Street

Major,
Brigade Major,
15th Australian Infantry Brigade.

Issued at 9.0 p.m.

To.	Copy No.
57th Battalion	1.
58th Battalion	2.
59th Battalion	3.
60th Battalion	4.
15th Machine Gun Company	5.
25th Machine Gun Company	6.
15th L.T.M.B.	7.
No. 4 Signal Section	8.
32nd Battalion	9.
15th Field Company A.E.	10.
15th Field Ambulance	11.
Copies to :-	
5th Australian Division	12.
8th Aust. Inf. Brigade	13.
29th A.A.S.C.	14.
Area Commdt, KEMMEL	15.
A.P.M.	16.
B.G.C. 15th A.I. Brigade	17.
Staff Captain	18.
Captain MATHESON	19.
War Diary	20-22.
File	23.

T A B L E "A"

TO ACCOMPANY 15th AUSTRALIAN INFANTRY BRIGADE ORDER No. 136.

TRANSPORT TRAIN.

- A. The transport train will consist of :-
 30 Covered Vans for personnel and horses.
 17 Flat trucks for vehicles (carrying in all 68 axles).
- B. The following personnel and transport will be carried on this train :-
 All Cookers,
 One water cart per Unit.
 All mess carts,
 3 Riding horses and one baggage wagon Brigade Headquarters.
 2 Riding Horses per Unit.
- C. Two days rations will be carried for personnel and animals travelling by this train.

-----oo*oo-----

265

T A B L E "B".

TO ACCOMPANY 15th AUSTRALIAN INFANTRY BRIGADE ORDER No. 135.

DATE	FROM	TO	ROUTE	REPORT FOR BILLET. TO	REMARKS.
DECEMBER 14th	KEMMEL AREA	STRAZELLE AREA	At discretion of Senior Transport Officer	Area Commandant STRAZELLE	<p>(a) The times of moving off from each area will be notified direct to all concerned by the Senior Transport Officer (Captain MATHESON 29th A.I.S.C.)</p> <p>(b) When transport is Brigaded 100 yds distance will be kept between each Unit transport.</p> <p>(c) One N.C.O. and 3 men of the M.P. are moving with the column and are at the disposal of the Senior Transport Officer. They will be rationed by Brigade Headquarters.</p> <p>(d) A billeting party of one Officer and 4 N.C.O's with one Interpreter (to be detailed by Brigade H.Q.) will be detailed by the Senior Transport Officer to move in advance of the column and arrange billeting. They will be provided with bicycles.</p> <p>(e) All billets will be vacated by 10.0 a.m. each day.</p> <p>(f) The strictest march discipline must be observed throughout.</p>
15th	STRAZELLE AREA	RENESECURE AREA	WALLON CAPPEL	Area Commandant RENESCURE	
16th	RENESECURE AREA	THIEMBRONNE AREA	ARQUES	Area Commandant THIEMBRONNE	
17th	THIEMBRONNE AREA	Respective Billeting Areas	At discretion of Senior Transport Officer		

APPENDIX 54

295

T A B L E "C"

TO ACCOMPANY 15th AUSTRALIAN INFANTRY BRIGADE ORDER No. 136.

DATE.	UNIT	STATION		TIME		REMARKS.
		ENTRAINING	DETRAINING	DEPARTURE	ARRIVAL	
DECEMBER 15th	15th Bde. H.Qrs.	DE KENNEBEK	DESVRES	12 noon	5.0 p.m.	(a) All troops must be at the entraining station one and a half hours prior to the time of departure of the train
"	57th Battalion	"	"	"	"	
"	58th Battalion	"	"	"	"	
"	15th M.G. Company	"	"	"	"	
"	15th L.T.F.	"	"	"	"	
"	15th Field Coy. A.E.	"	"	"	"	
"	15th Field Ambulance	"	"	"	"	
"	25th M.G. Company	"	"	"	"	(b) Unit entraining Officers will meet Capt. A.E. KEYS, 57th Battalion, at the entraining station half an hour before the arrival of the troops. Entrainment states to be brought.
"	59th Battalion	"	"	1.0 p.m.	6.0 p.m.	
"	60th Battalion	"	"	"	"	
"	32nd Battalion (8th A.I. Bde.)	"	"	"	"	
						(c) Each train accomodates 2,200 all ranks and has in addition two baggage vans
						(d) The following distances will be observed on the march :- Between Companies 100 yards Units and Transport 100 yards Battalions 500 yards

APPENDIX 6

265

T A B L E "D"

TO ACCOMPANY 15th AUSTRALIAN INFANTRY BRIGADE ORDER No. 136.

DATE	UNIT	STARTING POINT		ROUTE	REMARKS.
		PLACE	TIME		
DECEMBER 15th	58th Battalion) 15th L.T.M.B.)	Sheet 28 KEMMEL X ROADS	9.20 a.m.	X Roads N.27.C.9-7 - DAYLIGHT CORNER	(a) 100 yards between companies and 500 yards between Battalions will be observed on the march. (b) Ten minute halts at ten minutes to the clock hour will be observed. (c) Baggage to be carried on the personnel train must be reduced to a minimum. (d) All bicycles will be sent on the transport train. (e) Two companies of the 59th Battalion will be prepared to entrain on the first train leaving at 12 noon on 15th inst.
-ditto-	15th Bde. H.Qrs. 15th M.G. Company	-ditto-	9.30 a.m.	-ditto-	
-ditto-	57th Battalion	-ditto-	9.40 a.m.	-ditto-	
-ditto-	15th Field Coy. S.E.	X Roads N.27.C.9-7	10.10 a.m.	-ditto-	
-ditto-	15th Field Amb.	At discretion of C.O.		At discretion of C.O.	
-ditto-	59th Battalion.	Road junction N.33.D.1-5	11.0 a.m.		
-ditto-	60th Battalion	X Roads N.27.C.9-7	11.0 a.m.	DAYLIGHT CORNER	
-ditto-	32nd Battalion	At discretion of C.O.		At discretion of C.O.	
DECEMBER 16th	60th Battalion	Sheet 13 CALAIS X Roads S.E.1.9.	9.30 a.m.	To be guided by Advance Parties	
-ditto-	59th Battalion	-ditto-	9.40 a.m.	-ditto-	
-ditto-	15th Bde. H.Qrs. 15th L.T.M.B.	-ditto-	10.0 a.m.	-ditto-	
-ditto-	57th Battalion	-ditto-	10.5 a.m.	-ditto-	
-ditto-	15th M.G. Coy.	-ditto-	10.10 a.m.	-ditto-	

APPENDIX 6

265

57

APPENDIX 16

265

APPENDIX 16

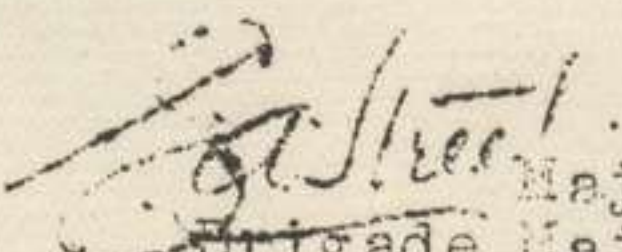
S E C R E T.

CORRIGENDUM TO

15th AUSTRALIAN INFANTRY BRIGADE ORDERS 135 and 136.

13th December, 1917.

The 25th Machine Gun Company is not being relieved on the night 14th/15th December, 1917 but is remaining in the line until further notice and will therefore be deleted from 15th Australian Infantry Brigade Group.


Major,
Brigade Major,
15th Australian Infantry Brigade.

Issued to all recipients of 15th Australian Infantry Brigade Orders 135 and 136.

SECRET.

Administrative Instructions

to accompany

15th Australian Infantry Brigade Order No. 136.

dated - 11.12.17.

12.12.17.

1. Advance parties from units comprising the 15th Aust. Inf. Bde. Group will report to the R.T.O. BAILLEUL at 4.30 p.m. tomorrow, 13th inst. and will travel by Train R.B.L.40 to SAMER, reaching there about five hours later.

2. Advance parties will consist of:-

	<u>Offs.</u>	<u>Others.</u>
Brigade H.Qrs.	-	1
Each Battalion	1	1 N.C.O. per Co.
Machine Gun Co's.	1	1 N.C.O.
L.T.M.B.	-	1 N.C.O.
Field Amb.	1	1 N.C.O.
Field Co.	1	1 N.C.O.
A.A.S.C.	-	1

3. Arrangements will be made for this party to be met and accommodated for night in SAMER. Officers will take their valises by train from BAILLEUL.

4. Advance parties will meet Staff Captain at RAILWAY STATION, SAMER at 10 a.m. on 14th inst. The senior of each unit party will produce correct ration state (personnel and animals) of his unit.

5. Bicycles will be taken.

6. Units will move out with echelons full.

7. All baggage and Supply waggons will report to transport lines on afternoon of 14th inst.

8. Advance parties will meet units on arrival of trains at DESVRES and will guide to billeting areas.

Captain.
Staff Capt.
15th Australian Infantry Brigade.

Issued to all
Recipients of Brigade Order 136.

S E C R E T.

A D D E N D U M No. 1 to
ADMINISTRATIVE INSTRUCTIONS

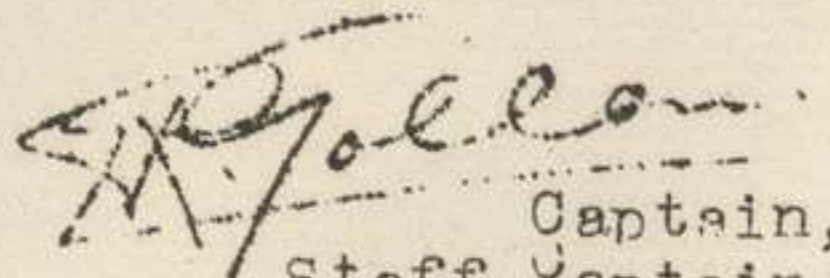
ACCOMPANY 15th AUSTRALIAN INFANTRY BRIGADE ORDER No. 136.

12th December, 1917.

1. Interpreters have been allotted for the move to Units of the Brigade as follows :-

Brigade Transport Column - leaving 14th inst.)	M. SALAUN.
Brigade Headquarters)	M. VAN CUTSEN.
15th A.L.T.M.B.)	
15th M.G. Company)	
59th Battalion)	M. TROCME.
60th Battalion)	
32nd Battalion)	
25th Machine Gun Company)	
57th Battalion)	M. RAYNAUD.
58th Battalion)	
29th A.A.S.C.)	
15th Field Company A.E.)	

2. M. RAYNAUD will arrange Billets in WIZERNES for transport and personnel mentioned in Table "A" of Brigade Order No. 136.
3. Lieut. L.S. DAVIS 58th Battalion has been detailed to take charge of the column proceeding by train on 15th inst. and will superintend entrainment and detrainment and subsequent move.
4. Lieut. C.R. COLE 58th Battalion has been detailed as Billeting Officer for Brigade Transport Column moving on 14th inst. This Officer will report at once to the O.C. Column for instructions.
5. D.A.C. wagons allotted to Units will be used for conveyance of all baggage, stores, rations etc. subsequent to the departure of the transport.


 Captain,
 Staff Captain,
 15th Australian Infantry Brigade.

Issued to all recipients of 15th Infantry Brigade Order No. 136.
Copies to Interpreters concerned.

SECRET.

APPENDIX 16

ADDENDUM No. 2.

ADMINISTRATIVE INSTRUCTIONS

to

ACCOMPANY 15th AUSTRALIAN INFANTRY BRIGADE ORDER No. 136.

Ref:- BELGIUM Sheet 20 1/40,000
CALAIS Sheet 13 1/100,000

13th December, 1917.

1. The following are the approximate Billeting Areas for Units of the Brigade Group :-

Brigade Headquarters	PARENTY	5.D.7.1.
15th A.L.T.M.B.	-do-	-do-
15th M.G. Company	COURSE	5.E.1.5.
57th Battalion	DOUDEAUVILLE	5.D.10.4.
58th Battalion	COURSET	5.E.1.8.
59th Battalion	ENQUIN-SUR-	
	BAILLON	6.E.1.9.
60th Battalion	HUBERSENT	6.C.8.9.
29th A.A.S.C.	BEAUCORRY	5.D.7.5.
15th Field Ambulance	QUEHEN	4.B.10.2.
25th Machine Gun Coy. near	CONDETTE	
15th Field Company A.E.	VIERRE-AU-BOIS	

2. All Units (less 58th Battalion) moving by train on 15th inst. will be billeted in DESVRES on night of arrival. 58th Battalion will proceed direct to COURSET.

3. (a) Motor Lorries will report to Units at 7 a.m. on 15th inst. at places as shown hereunder :-

Brigade Headquarters)		
15th A.L.T.M.B.)	1 lorry	KEMMEL CHATEAU
15th M.G. Company		1 lorry	-do-
57th Battalion		2 lorries	-do-
58th Battalion		2 lorries	-do-
59th Battalion		2 lorries	-do-
60th Battalion		2 lorries	-do-
25th M.G. Company		1 lorry	KEMMEL CHURCH.
15th Field Company A.E.		1 lorry	-do-
15th Field Ambulance		1 lorry	DRANOUTRE.
32nd Battalion		2 lorries	WULVERCHEM.

(b) These lorries will be loaded with the utmost despatch and will be clear of KEMMEL before 8.30 a.m.

(c) Lorries should be loaded with Officers valises and baggage required first at destination.

(d) Billeting parties will meet lorries at DESVRES STATION on arrival and dispose of them as Staff Captain will direct.

4. Transport columns arriving at new area will be met by guides from Units as follows :-

(a) Transport mentioned in Table "A" accompanying Brigade Order 136 will be met at CROSSROADS immediately SOUTH of CAMPAGNETTE 5.E.8.8. at 12 noon on 16th inst.

(b) Transport moving in accordance with Table "B" accompanying Brigade Order 136 will be met at ZOTEAUX 5.E.65.45 at 2 p.m. on 17th inst.

R. Gallan

Captain,
Staff Captain,
15th Australian Infantry Brigade.

SECRET

15th AUSTRALIAN INFANTRY BRIGADE TRANSPORT GROUP ORDER No. 1.
by
CAPTAIN H. MATHESON SENIOR TRANSPORT OFFICER.

Ref :- HAZEBROUCH 5A
CALAIS 13 1/100-000

12th December, 1917.

-
1. (a) The 15th Australian Infantry Brigade Transport Group will move to the STRAZEELE AREA on the 14th inst. by march route via BAILLEUL and METERIN.
(b) For the purpose of this move the Group will consist of :-
 29th A.A.S.C.
 15th Machine Gun Company
 25th Machine Gun Company and 15th L.T.M. Battery
 57th, 58th, 59th and 60th Battalions
 1 Battalion 8th Brigade 1st line transport.
 15th Field Engineers.
 15th Field Ambulance
 2. March Table attached.
 3. The strictest march discipline must be observed.
 4. When transport is Brigaded 50 yards distance will be kept between each Unit Transport, and 25 yards distance between every sixth vehicle.
 5. The usual precautions will be taken against observation by enemy aircraft.
 6. Halts will be made at 10 minutes before the clock hour, water and feed up at noon.
 7. Immediately on arrival at billets one orderly per Unit will report to senior transport Officer of Column.
 8. Supplies on the march as follows :-
 14th inst. - Unconsumed portion on men or transport.
 For 15th inst on G.S. Wagons. No issue from Dump this day.
 15th inst. - Unconsumed portion on man or transport, refill at RENESCURE Church for consumption on 16th inst.
 16th inst. - Unconsumed portion on man or transport, refill at THIEMBRONNE for consumption on 17th inst.
 17th inst. - Draw rations for consumption on 18th and 19th from Supply Dump BEAUCORRY except 15th Field Engineers and 15th Field Ambulance who will draw from Supply Dump SAMER.
 9. For the move Lieut. BERGLUND, 29th A A S Co will be orderly Officer.
 10. Each O.C. Transport will hand to Senior Transport Officer at starting point, a marching out state.

Sgd H. MATHESON Captain,
O.C. 29th A.A.S.C.

Issued to all recipients of Brigade Order No. 136.

T A B L E "1"

UNIT	DATE	STARTING POINT	TIME	TO	ROUTE.
15th Bde. H.Qrs.	14/12/17	DR/NOUTRE CHURCH	8.55 a.m.	STRAZELLE	BAILLEUL and METERIN.
29th A.A.S.C.	"	"	9.5 a.m.	"	"
15th M.G.Coy } 15th L.T.M.B. }	"	"	9.10 a.m.	"	"
57th Battalion	"	"	9.15 a.m.	"	"
58th Battalion	"	"	9.20 a.m.	"	"
59th Battalion	"	"	9.25 a.m.	"	"
60th Battalion	"	"	9.30 a.m.	"	"
1 Bn. 8th Bde } 1st Line T'nt }	"	"	9.35 a.m.	"	"
15th Field Coy. A.E.	"	"	9.40 a.m.	"	"
15th Field Amb.	"	"	9.47 a.m.	"	"

15th AUSTRALIAN INFANTRY BRIGADE.

APPENDIX 17

Intelligence Summary No.12.

From 6 a.m. 10th December to 6 a.m. 11th Dec.1917.

1. OPERATIONS(a) ARTILLERY

Our artillery were actively engaged in counter-battery work, and enemy defences were kept under intermittent fire. FLY BUILDINGS, BEEK FARM, SQUARE FARM, GIANT & TWINS received particular attention from the heavies. RIFLE FARM, HOILEBEKE CHATEAU, and OMELET TRENCH 0.30.a. were shelled by the 18 pounders while HOUTHEN & COMINES were shelled at intervals by the heavies. Throughout the night known enemy tracks and positions were irregularly shelled.

(b) PATROLS.No.1 Patrol.

For the purpose of reconnaissance one N.C.O. and three men moved out from 0.23.a.2.4. to 0.23.b.25.80 then in a northerly direction to 0.17.d. and returned to picquet line via Junction Buildings.

They report having heard enemy working on his wire at 0.17.d.6.1. The Patrol was subjected to heavy M.G. fire from 0.23.b.55.95. Other patrols traversed same area from 9.15 p.m. to 11.30 p.m., 12.15 a.m. to 2.50 a.m. and 3.15 a.m. to 5 a.m. Reporting information of similar nature, each party patrolling right flank hearing working parties on wire in vicinity of FLY BUILDINGS.

A waiting patrol was established at 0.17.d.1.8. to endeavour to establish identification but no enemy movement was observed.

No.2 Patrol.

For the purpose of reconnaissance and locating enemy a patrol of 1 Officer and three O.Rs. moved out at 4.45 p.m. from 0.23.c.20.55.

They moved in a southerly direction to the WAMBEEK at 0.23.c.3.2. then east to 0.23.c.90.15. and returned to point of departure in a detour via 0.23.c.5.5. No enemy movement was observed.

No.3 Patrol.

For the purpose of reconnoitring the ground in front of Battalion sector 1 Officer and 3 O.Rs. left 0.23.a.3.2. at 5 p.m. The patrol proceeded slightly north of east to 0.23.b.20.35. thence southwest to 0.23.Central, to our line 0.23.c.15.18 at 6.30 p.m.

They report that enemy is now occupying Pill Box (formerly unoccupied) at 0.23.c.55.70, a M.G. is also located at this position.

No.4 Patrol.

Patrols were actively engaged reconnoitring NO MANS BAND in front of left Battalion sector and report NO MANS LAND to be very quiet, no enemy were encountered or hostile movement observed.

No.5 Patrol.

The Right Battalion patrols maintained the usual activity throughout the night, and communication was established with Flank Brigade and Battalion. At 10.30 p.m. patrol to left Battalion report having observed enemy patrol of 4 to 6 men in vicinity of WAMBEKE. When observed they were moving towards enemy lines and disappeared in that direction.

- 2 -

(c) MACHINE GUNS.

Our M.Gs. were very active throughout the period. Hostile aircraft was engaged during the afternoon. Party of enemy who vacated Pill Box at O.17.d.65.95. during artillery shelling were fired on (casualties claimed).

The following targets were harassed from 5 p.m. to dawn:-

Enemy tramway O.24.a. and b., SPUD FARM and road in that vicinity, POLL HOUSE, HOILEBEKE CHATEAU, FLY BUILDINGS, O.36.a.75.65, - O.30.d.24.90 - O.24.d.50.40 - O.24.c.80.05.- O.24.c.15.50 - O.24.c.80.65.

Enemy approaches tracks and parapets were also kept under sweeping fire.

(d) TRENCH MORTARS.

Enemy M.G. positions at approx. O.29.d.40.55., O.29.b.05.40 and O.23.d. Central were fired on with silencing effect. BUEK FARM, the TWINS and RIFLE FARM were fired on at irregular intervals. Expenditure of ammunition 77 rounds.

2. IDENTIFICATIONS Nil.3. ENEMY SHELLING.

Enemy shelling increased considerably for the 24 hours. Several direct hits were obtained on WALL FARM. VERNE ROAD and PIONEER LANE in O.16.c. and d. were shelled with 5.9s. during the afternoon both sap and duckboards being damaged.

RAVINE WOOD O.10.c., O.16.d., and ROSE WOOD were kept under consistent fire with 5.9s. from direction of HOUTHEN, DERRY HOUSE, and ULSTER HOUSE in O.27.a. received slight attention. RAVINE WOOD and VALLEY of the ROOZEBEKE were heavily shelled from 10 to 11 a.m.

At 4 p.m. the enemy shelled RAVINE Dugouts with 8" shells but no direct hits were obtained.

About 40 rounds fell between O.23.c.2.3. and TORREKEN FARM.

(O.20.d.2.3.) the duckboarded track from TORREKEN FARM to Prince Ruperts Dugouts O.20.b.2.2. was intermittently shelled.

No gas shelling was reported.

4. ENEMY ATTITUDE.

The enemy showed increased activity in both Artillery and infantry. Aircraft was also active.

5. ENEMY DEFENCES.

Two A.A. M.Guns were mounted at position true bearings 61 degrees from O.27.d.90.65. range 2,700 yds (Barr and Stroud Rangefinder)

One gun has previously been reported at this position.

Post at O.17.d.65.95 was engaged by our artillery at 11.45 a.m., Enemy observed to be vacating position.

Pill Box at O.23.c.55.70 previously unoccupied has been reclaimed and contains M.Gs. (see patrol report)

6. HOSTILE AERIAL ACTIVITY.

Aerial activity has increased considerably.

E.A. flying at very low altitude over RAVINE WOOD and left Battalion area was driven off by A.A. and M.G. Fire.

About 3 p.m. six Gothas crossed our lines travelling in the direction of DRANOUTRE. These planes were actively engaged by Anti-Aircraft and M.Gs. without apparent result not even their formation was disturbed.

In the early evening bombs were dropped in our back areas.

Throughout the day 11 attempts of which only three were successful was made by E.A. to cross our lines.

Balloons.

The following true bearings from O.15.d.75.55. balloons at 7.45 a.m. 56, 58, and 78 degrees.

7.50 a.m. 125, 110 degrees. 1.20 p.m. 56, 68, 72, 52 degrees.

2.30 p.m. 108, 80, 140 degrees. 3 p.m. 38 and 23 degrees

3.30.125 degrees.

7. ENEMY MOVEMENT.

Pill Farm again observed great centre of enemy movement.
 8.15 a.m. a small party observed at LAKE FARM O.24.c.544.
 The following train movement was observed:-
 10.50 a.m. train left TENBRIELEN for WERVICQ.
 10.55 a.m. " shunting in TENBRIELEN.
 11.5 a.m. train left WERVICQ for TENBRIELEN.
 11.15 a.m. train shunting in WERVICQ.
 11.20 a.m. train left GHELUWE for TENBRIELEN.
 11.30 a.m. train shunting in WERVICQ
 11.50 a.m. ditto.
 12.10 p.m. train left TENBRIELEN for WERVICQ.
 12.35 train left WERVICQ for GHELUWE.
 12.40 p.m. train left GHELUWE for TENBRIELEN.
 12.50 p.m. train left TENBRIELEN for WERVICQ.
 1.25 p.m. train left GHELUWE for TENBRIELEN.
 1.40 p.m. train shunting in TENBRIELEN.
 1.50 to 2 p.m. train shunting in WERVICQ.
 1.55 p.m. train left WERVICQ for BOUSBECQUE.
 and then in direction LINSELLES

SIGNALLING.

At 3.20 p.m. signalling with a flag at P.7.c.26.08. was observed. At 5 p.m. red lamp ^{was} observed signalling from COMINES.

FLARES.

White flares were not so consistently used. Twin green flares produced M.G.fire.

8. MISCELLANEOUS.

Three small balloons came over our lines and dropped papers.
 At 11.20 a.m. our artillery ignited a dump at true bearing 75 degrees from O.17.d.75.55.
 Enemy made consistent use of smoke screen for his artillery in vicinity of HOUTHEN.

9. LOCATIONS UNCHANGED.

W. W. J. J.
 Lieut.
 for Brigade Major.
 15th Australian Infantry Brigade.

Volume VII

APPENDIX 18

265

15th AUST. INF. BDE.

DAILY STRENGTH RETURN.

8th DECEMBER 1917.

UNIT.	: Actually with :			: In Hospital. :			: Detached. :			: Total Effective Strength. :			Increase.	Decrease.	Excludes.
	Off.	O.R.	Total.	Off.	O.R.	Total.	Off.	O.R.	Total.	Off.	O.R.	Total.			
15th Bde. H.Q.	7	27	34	-	-	-	-	2	2	7	29	36			
15th A.L. T.M.B.	3	40	43	-	3	3	1	8	9	4	51	55			
15th M.G. Coy.	10	184	194	-	2	2	2	6	8	12	192	204	Lieut. Murphy. 1 Off. 7 O.R. Reinf.		
57th Bn.	26	761	787	-	13	13	4	122	126	30	896	926	33 O.R. Ex Reinf. : 5 O.R. A.M.C.		
59th Bn.	34	659	693	-	12	12	8	95	103	42	766	808	" : 5 "		
59th Bn.	30	673	703	4	18	22	9	118	127	43	809	852	Lieut. Binder. 1 Off. 25 O.R. Reinf. : 5 "		
60th Bn.	30	682	712	1	25	26	6	87	93	37	794	831	1 O.R. Ex Sick. : 1 O.R. Evac. Div. Area. : 5 "		
TOTAL.	140	3026	3166	5	73	78	30	438	468	175	3537	3712			

APPENDIX 18

66

265

DETAILS OF DETACHED.

15th M.G. Coy. Off. O.R.	57th Battalion. Off. O.R.	58th Battalion. Off. O.R.	59th Battalion. Off. O.R.	60th Battalion. Off. O.R.
Special Duty. 2	A.G's office 2	Postal Staff 1	A.G.B.D. 1	A.S.C. 31
Capt. Muirson	A.S.C. 3	A.F.C. 1	Lieut. Dunn. 1	A.W.L. 1
Lieut. Trevan.	A.W.L. 2	Lieut. Keating 1	A.S.C. 2	A.G's office 1
Leave 2	Compound 9	Concert Party 2	A.W.L. 4	Camp Warden 1
S.A.School. 1	A.P.M. 1	Corps H.Q. 1	A.G's office 1	Y.M.C.A. 1
Abbeville School 1	D.A.D.O.S. 1	A.S.C. 2	Corps H.Q. 1	Concert Party 3
A.S.C. 2	Div. Duties 15	A.W.L. 6	Compound 6	Detention 4
2 6	Dugout Party 1 31	A.G's office 1 2	Div. Duties 2 27	Leave 16
	Lieut. McCallum.	Lieut. McWhannell	Lieut. Toohy	Anzac Workshops 1
	14th Engineers 6	Anzac Workshops 2	Capt. Lay	Salvage 1
15th A.L.T.M.B.	15th do- 23	Div Duties 22	Leave 8	Div. Duties 1 8
	Leave 15	Detention 10	Arrest In 1 1	Lieut. Davis
Special Duty. 1	Anzac Workshops 2	Leave 10	London.	Corps H.Q. 1
Lieut. Gamble.	Supply Guard 1	Supply Depot 5	Lieut. Reid.	Working Party 29
Leave 1	Corps School. 2 8	Area Duties 12	Working Party 30	Corps School 2 5
Corps School 6	Lieut. White	Corps School 3 13	Engineer Party 24	Lieut. Diamond
Awaiting D.C.M. 1	" Falconer	2/Lt. Webb	Corps School 1 4	" Richards
	Army School 1 2	" Slaughter	Capt. Heron.	Corps Sigs 3
1 8	Lieut. Salmon.	Lieut. Davis	Corps Lewis Gun. 1	" Lewis gun. 2
	Lewis Gun School. 1	Musketry Eng. 1	" Bombing 1 2	" Bombing 2
		Army School. 2 4	2/Lt. Sheils.	Army School 1 2
15th Bde H.Q.		Capt. Loughnan	Corps Signal 2 2	Capt. Dickson
		Lieut. Crawley	Lt. Pinkerton	Army Sigs 1
Leave 2.		Farrier School 2	2/Lt. Olver	" Sniping 1
		Aldershot 1	Army School 1 3	" Cookery 1
		Major De Ravin.	Capt. Burse	" Musketry 1 1
			Army Cookery 1	Lieut. Knight.
			" Musketry 1	G.H.Q. Lewis Gun. 1 1
				Lieut. Arter.
	4 122	8 95	9 119	6 87

APPENDIX 18

67

15th AUSTRALIAN INFANTRY BRIGADE.

Intelligence Summary No.13.

From 6 a.m. 11th December to 6 a.m. 12th December 1917.

-----*

1. OPERATIONS.

(a) ARTILLERY.

Our artillery was actively engaged on enemy strong points during the day.

Enemy line between PARTYNTJE FARM O.24.d.8.3. and LAKE FARM O.24.c.5.4 was shelled by 4.5s. The usual spasmodic fire was maintained on the TWINS and GIANT, FLY BUILDINGS, RIFLE FARM, and BEEK FARM.

Counter-battery work was also carried out and enemy back areas shelled.

Enemy post O.17.d.65.95. was engaged by the 18 pounders.

Consistent slow fire was directed on SQUARE FARM, O.30.b.5.2.

Enemy tracks and approaches were swept throughout the night.

(b) PATROLS.

Patrolling activity was maintained from 5 p.m. till daylight. NO MANS LAND is reported to be very quiet, no enemy movement being encountered.

Patrols as follows:-

No.1. Patrol.

A reconnoitring patrol of 1 N.C.O. and 3 men moved out from our line O.11.d.05.25. at 8.30 p.m., then in an easterly direction to position 100 yds front of our wire, and patrolled our frontage returning to O.11.b.4.1. at 9.30 p.m. No enemy movement was observed.

No.2 Patrol.

A reconnoitring patrol of 1 N.C.O. and 3 men left O.11.b.75.25. at 10.30 p.m. They proceeded in an easterly direction to Road which they followed to O.11.65.85. then to O.11.d.05.25 and back along our wire to place of departure. Report no enemy activity.

No.3 Patrol.

A reconnoitring patrol of 1 N.C.O. and 3 men moved out from our picquet line in O.23.a.7.6. at 4.45 p.m. Patrol proceeded in a northerly direction for about 100 yds. where they turned to the east and followed hedge for about 150 yds. They report enemy minnenwerfer firing from O.17.d.7.1. Enemy party was also heard working on their wire. No hostile patrols were encountered. Another patrol on approximate same route two hours later heard working party on wire O.23.b.4.5. also apparently ration party carrying tins O.17.d.7.2.

No.4 Patrol.

A reconnoitring patrol of 1 Officer and 6 O.R.s. moved out from O.23.a.3.2. at 6.30 p.m. and proceeded in northeasterly direction along road to O.23.b.0.5., then south for about 200 yds, where they turned southwest to point O.23.c.6.7. then south till reaching the WAMBEEK and returned by direct route to O.23.c.15.55 at 7.30 p.m. Report enemy unusually quiet, no movement being observed.

No. 5 Patrol.

A reconnoitring patrol of 1 Officer and 6 O.R.s. moved out from O.23.c.15.55 at 10 p.m. Patrol proceeded slightly east of south until reaching the WAMBEEK which they followed to O.23.e.8.2., then northerly to O.23.c.95.85. then southwesterly to place of departure at midnight.

M.G.Fire was encountered from front and both flanks when patrol was about 150 yds south west of RIFLE FARM, but no enemy movement could be detected.

No.6 Patrol.

The Right Battalion patrols actively traversed NO MANS LAND throughout the night and report enemy attitude to be very quiet, no movement being observed. Communication was maintained with Flank units.

(c) MACHINE GUNS.

Our Machine Guns were actively engaged in sweeping enemy trenches, tracks and approaches, and the following targets were harassed intermittently from 5 p.m. to dawn:-

System of enemy trenches O.18.b. and d., Road from O.18.b.4.5. to O.12.d.15.05., including PAT, MURPHY, and SPUD FARMS. Lock No.4 in P.13.a. and road leading to same.
Expenditure of ammunition 18,000 rounds.

(d) LEWIS GUNS.

Lewis Guns fired on and dispersed several small parties moving about enemy positions (two casualties are claimed).

(e) TRENCH MORTARS.

Machine Gun Positions in O.29.d.40.55., O.29.d.25.90, and O.23.d. Central, were shelled with silencing effect.

JULY FARM, FLY BUILDINGS and the TWINS were kept under irregular fire.

Expenditure of Ammunition 78 rounds.

2. IDENTIFICATIONS. Nil.3. ENEMY SHELLING.

Hostile artillery activity has again shown notable increase. OOSTFAVERNE WOOD was kept under consistent fire with H.E. and gas shells, while OLIVE TRENCH, and RAVINE WOOD were again subjected to searching fire with 5.9s. and GREEN and ROSE WOODS received particular attention with 77s. from direction of HOUTHEM. Prince Ruperts dugouts O.20.b.2.2., TORREKEN CORNER, GUY FARM, and MAHIEU FARM were shelled with gas shells. VAIL, ANZAC, and GUN FARMS were shelled intermittently. MANCHESTER St. and PIONEER LANE were also searched with 5.9s.

4. ENEMY ATTITUDE.

Artillery above normal and aggressive. Infantry and Machine Guns quiet.

5. ENEMY DEFENCES.

Enemy post at O.17.d.65.95 does not appear to be occupied since our artillery bombarded it.
Minnenwerfer located firing from O.17.d.7.1. Working parties were heard on wire at O.23.b.4.5.

6. HOSTILE AERIAL ACTIVITY.

Enemy aircraft showed increased activity on our left Battalion frontage. Low flying planes were effectively engaged with M.Gs.

(a) Balloons.

Balloons were observed from the following true bearings from O.10.d.25.50 :- 100 and 110 degrees. A small pear shape balloon at a high altitude from direction of WARNETON disappeared in direction of Drenoutre.

7. ENEMY MOVEMENT.

Small parties of enemy were observed in vicinity of HOUTHEM.

At 11 a.m. party of 4 men seen at dugouts in CANAL bank P.13.d. LAKE FARM, O.24.c.5.4., and PILL FARM O.24.a.4.3. showed regular individual movement.

During the heavy fog at 5 a.m. enemy could be distinctly heard working behind wire in direction of FLY BUILDINGS.

A succession of six blasts of a whistle and voices could be heard in same vicinity. It is thought whistle was a signal for stretcher bearer.

A dump in O.26.b.4.6. was ignited by our artillery at 10 a.m.

At 12.15 a.m. a train was seen moving into WERVICQ.

Signalling.


Flares. - The result of three enemy shells falling close to RIFLE FARM three green flares each bursting into two were fired from RIFLE FARM. Several flares breaking into two white lights were fired throughout the night without apparent result.

8. MISCELLANEOUS.

Enemy made consistent use of smoke screens for his artillery in vicinity of HOUTHEM.

State of Ground. Patrols report NO MANS LAND to be wet and difficult to traverse.

9. LOCATIONS Unchanged.


Lieut.
for Brigadier Major.
15th Australian. Inf. Brigade.

15th AUSTRALIAN INFANTRY BRIGADE.

Intelligence Summary No.14.

From 6 a.m. 12th December to 6 a.m. 13th December 1917.

----- * -----

1. OPERATIONS.

(a) ARTILLERY.

Our artillery was actively engaged in shelling enemy defences. The back areas received special attention throughout the period. RIFLE FARM received concentration of fire from our 18 pounders on several occasions. LAKE FARM was shelled at intervals. Lock(3) in HOUTHEM COMINES CANAL was heavily shelled by the heavies. The TWINS, GIANT, and Square O.12.b. were kept under searching fire. Throughout the night the enemy known centres of movement and tracks were irregularly shelled.

(b) PATROLS.

No.1 Patrol. - For the purpose of reconnaissance, a patrol of 1 Officer and 3 O.Rs. moved out from O.23.c.15.95. at 4 p.m. The patrol moved in an easterly direction to Pill Box O.23.c.55.70 which was suspected night M.G. Post and found Pill Box to be unoccupied with no sign of recent occupation. From here the patrol proceeded in a northerly direction and investigated two demolished Pill Boxes O.23.b.02.60. They remained in this position for half an hour, and heard enemy movement in vicinity of BEE FARM O.23.d.1.5. The patrol returned to our line at O.23.c.15.55. at 6.0 p.m. No enemy were encountered.

No.2 Patrol.

For the purpose of reconnaissance a patrol moved out from our line O.23.c.15.25 at 10 p.m., and proceeded southeast to the WAMBEEK at O.23.c.3.2., then easterly to Junction of Roads O.23.c.9.2., then due north to O.23.a.9.0. when they returned in a direct line to O.23.a.2.1. at 11.45 p.m. They report M.G. activity from WAM and BEEK FARMS, but no enemy movement was observed.

No.3 Patrol.

For the purpose of reconnoitring GREEN FARM a patrol of 1 Officer and 3 O.Rs. left our line at O.17.b.00.55. They proceeded to O.17.Central, then in direction of GREEN FARM. The patrol reached and patrolled Road on west side of GREEN FARM and immediate vicinity of GREEN FARM. Movement could be distinctly heard at GREEN FARM and heavy M.G. Fire from O.17.d.4.8., GREEN FARM and O.17.b.4.5. was encountered. The patrol returned at 11.45 p.m.

No.4 Patrol.

Two patrols left our left centre Battalion lines and patrolled NO MANS LAND. No.1 from 5 p.m. to 8.30 p.m. report enemy attitude to be below normal. No.2 from 10.30 p.m. to 1.45 a.m. report M.G. position at O.17.d.6.2. and O.17.b.Central, and enemy wire to be strong.

No.5 Patrol.

The right Battalion patrols continuously patrolled and reconnoitred NO MANS LAND, and report enemy to be very quiet, communication was maintained with flank units.

(c) MACHINE GUNS.

M.G. were active throughout the period. Hostile aircraft was effectively engaged. Enemy tracks and defences were swept intermittently from 5 p.m. to dawn. M.Gs. were engaged in harrassing fire on the following targets:- Tramway system in O.24.a. and b., Road from O.12.d.20.00 to X Roads O.12.c., POLL HO. in O.18.a. and X roads O.18.b., Trench O.24.a.67.46 - O.30.b.00.50. - Rd.O.24.c.90.15 to O.24.d.20.25 and Rd. O.24.c.9.9. to O.24.d.10.98. Expenditure of Ammunition 21,000 rounds.

APPENDIX 20

-2-

(d) TRENCH MORTARS.

M.Gs. at 0.29.d.2.9. - 0.29.c.4.7. - and RIFEE FARM were fired on with silencing effect. Snipers post 0.29.d.2.7. was destroyed with four rounds. RIFLE FARM, JULY FARM, FLY BUILDINGS and the TWINS were irregularly shelled during the night. Expenditure of ammunition 90 rounds.

2. IDENTIFICATIONS Nil.3. ENEMY SHELLING.

Enemy shelling has not been so active during the twenty four hours as in the previous. OOSTTAVERNE SPJR was subjected to occasional bursts of H.E.

WAIL FARM, DEERY HOUSE, ULSTER FARM, and TORREKEN CORNER were lightly shelled with the 77s. while areas between BAY ROAD and GUN FARM was shelled at irregular intervals.

D.10.d. was kept under searching fire with 5.9., H.E. and shrapnel from direction of KORTEWILDE.

GREEN WOOD, ROOZEBEEK VALLEY, and RAVINE WOOD also received slight attention. No gas shellingis reported.

4. ENEMY ATTITUDE.

Artillery quiet, Infantry Normal.

5. ENEMY DEFENCES.

Suspected M.G. position 0.23.c.55.70 does not bear traces of recent occupation.

M.G. activity reported from GREEN FARM, BEE FARM, and WAM FARM.

M.Gs. were located at 0.17.d.60.20 and 0.17.b. Central.

6. HOSTILE AERIAL ACTIVITY.

Hostile planes were very active. During the morning 4 E.As. attempted to cross our lines but were driven back by M.G. fire and A.A.

At 10.45 a.m. a low flying plane evidently spotting for artillery flew along the left Battalion front line.

At 2.15 p.m. 9 Gothas escorted by three scouts crossed our line travelling in direction of Dranbutre They were engaged by A.A. and M.Gs. Those planes returned at 3 p.m. One hostile plane was observed to fall in direction of NEUVE EGLISE.

7. ENEMY MOVEMENT.

The usual movement was observed at PILL FARM. Two aerial defence M.G.s. previously reported at true bearing 61 degrees from 0.17.d. 90.65. was observed to fire on our planes.

At 1.45 p.m. a party of twelve men in single file moved from PILLE GREMS FARM to PILL FARM. Parties of approximately of twelve and fifteen men were seen moving about BEE and LAKE FARMS between 7 and 8 a.m. Owing to bad visibility train movement could not be detected.

Signalling.

Several orange coloured flares bursting into two lights were fired without apparent result. Enemy made frequent use of clear flares from 12 to 2 a.m. and again at 5.30 a.m.

8. MISCELLANEOUS.

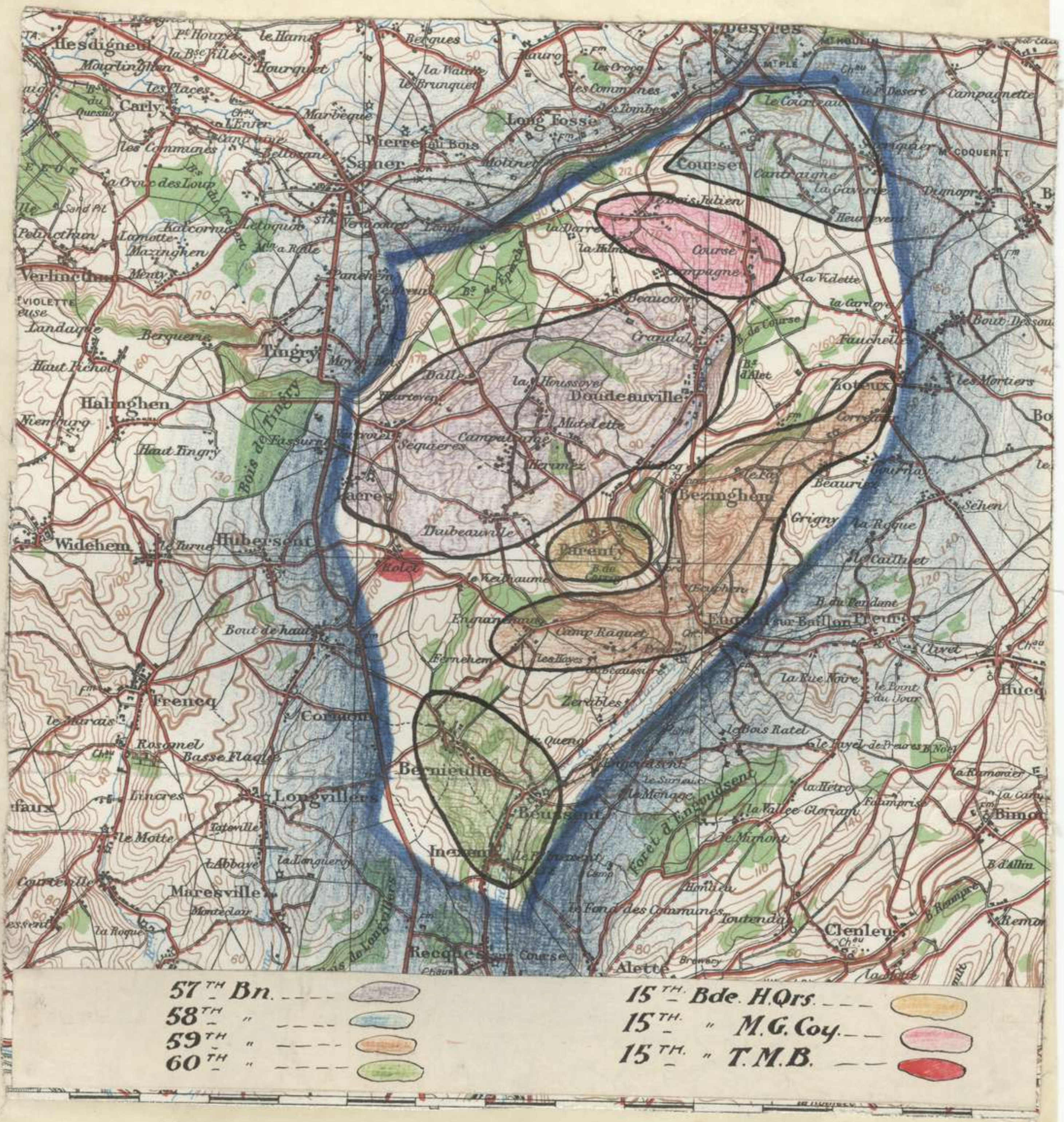
One of our planes had a forced landing in vicinity of WULVERGEHEM. When returning at 3 p.m. the Gothas dropped several bombs in vicinity of TORREKEN farm and square 0.29.d.

State of ground. - Wet and difficult to traverse.

9. LOCATIONS Unchanged.

[Signature]
Lieut.
for Brigade Major.
18th Australian Infantry Brigade.

265



UNIT	Act. with Unit		In Hospital		Detached		Ttl. Effec. Str.			INCREASE	DECREASE	EXCLUDES	
	Off.	O.R. Ttl	Off.	O.R. Ttl	Off.	O.R. Ttl	Off.	O.R. Ttl	Ttl				
15th Bde Hqs.	7	28	35	-	-	-	-	1	1	7	29	36	
15th A.L.T.M.B.	2	41	43	-	2	2	-	8	8	2	51	53	
15th M.G.Coy.	12	192	204	-	-	-	1	7	8	13	199	212	
57th Battalion	29	834	863	1	13	14	3	61	64	33	908	941	
58th Battalion	37	735	772	-	17	17	7	80	87	44	832	876	1 O.R. ev. sick 1 O.R. transfd.
59th Battalion	33	797	830	3	17	20	9	56	65	45	870	915	6 O.R. ex rfts 1 O.R. ex hosp
60th Battalion	30	787	817	1	18	19	7	56	63	38	861	899	3 O.R.S.O.S. evac.
TOTAL	150	3414	3564	5	67	72	27	269	296	182	3750	3932	

APPENDIX 23

APPENDIX 23

DETAILS OF DETACHED

265

15th Bde Hqrs.	Of	O.R.	57 Battalion	Of	O.R.	58 Battalion	Of	O.R.	59 Battalion	Of	O.R.	60 Battalion.	Of	O.R.
Leave		1	A.G's Office		1	Postal Staff		1	A.S.C.		2	A.S.C.		3
			A.S.C.		3	A.F.C.		1	A.G's Office		1	A.W.I.		1
			A.W.I.		1	Lt. Keating			Anzac Hqrs		1	A&G's Office		1
			Detention		4	Concert Pty		2	Detention		5	Camp Warden		1
			A.P.M.		1	Corps H.Q.		1	Camp Commndt.		1	Y.M.C.A.		1
			D.A.D.O.S.		1	A.S.C.		2	Lt. Toohy			Concert Party		3
			Div. Duties		14	A.W.I.		5	Div. Duties		1	Detention		7
			Leave		20	A.G's Office		1	Capt. Lay			Leave		1
15th A.L.T.M.B.			Anzac Workshops		3	Div. Duties		14	Leave		1	2/Lt Calder		
Corps School		6	Supply Guard		1	Anz. Workshops		2	Major Kuring			Corps School		2
Leave		1	Corps School		2	Detention		12	Aus. Div. Train		2	Lt Diamond		
Awaiting D.C.M. (London)		1	Lt. White			Leave		1	Arrest in London		1	Lt Richards		
			Lt. Falconer			Lt. Tasker			Lt. Reid			Signalling Schl.		3
			5th Army Musketry		1	Supply Depot		5	AIF Hqrs (Ind Arm)		1	Lewis Gun "		1
			2/Lt. Money			Corps School		2	Lt. Gamble			Bombing "		1
			2nd Army Musketry		1	2/Lt Slaughter		11	Corps School		1	Gas "		1
		8	L.M.G. School		1	Lt. Davis			Capt. Heron			2nd Army Sig "		1
			Cookery School		1	Musketry (Eng)		1	H.Q. School		1	Sniping "		1
						Army School		2	Bombing School		1	Musketry "		1
15th M.G. Coy.						Lt. Crawley			2/Lt Shiells			Lt Knight		
Special Duty		1				2/Lt Shiells			Sig. School		2	5th Army Musketry		1
Leave		3				Farriery Schl		2	Lt. Pinkerton			Lt Allardyce		
S.A. School		1				Gas School		1	2/Lt. Olver			H.Q.L.G. School		1
Transport School		1				Y.M.C.A.		1	Gas School		1	Capt. Arter		
A.S.C.		2				Senior OffsSch		1	Scouting School		1	Salvage		1
						Mjr DeRavin			2nd Army Musketry		1	Div. Duties		1
						Area Duties		4	4th " "		1	Lt Davis		7
									5th " "		1	Anzac Hqrs		1
		1												
						3	61		7	80		9	56	
														7
														56

74

APPENDIX. 73

Headquarters,
15th Australian Inf. Brigade.
26th December 1917

APPENDIX.

- 57th Battalion
- 58th Battalion
- 59th Battalion
- 60th Battalion
-

1. The Brigade N.C.O's School will assemble at THUBEDEVILLE on 27th inst.
2. Vacancies for 30 junior-prospective or backward N.C.O's are allotted to each Battalion.
3. The School Staff will consist of Capt. T.A. FAIRFAX, M.C. 58th Battalion, (Chief Instructor), and 1 Officer and 2 N.C.O's. from each Battalion. These Officers and N.C.O's to be selected by the Chief Instructor by mutual agreement between Commanding Officers concerned. Sergeant G.A. HULSE, A.G.S. will be School Sergeant-Major.
4. The entire personnel of the School will be billeted at THUBEDEVILLE.
5. It is intended that the School shall continue during the period that the Brigade is in rest. There will only be one course and by this means it is hoped to produce good reliable N.C.O's.
6. The syllabus will be progressive and will be issued weekly.
7. Personnel will report at THUBEDEVILLE to a representative of Brigade Headquarters at 10.0 a.m. on the 27th inst.
8. Each Battalion party will provide its own cooking utensils and cooks.
9. The 15th A.L.T.M.B. will detail 1 limbered wagon and team to report to the School at 10.0 a.m. on 27th inst. This wagon to be used for drawing rations etc.
10. The 57th Battalion will detail A.Q.M.S. to act as School Q.M. Sergeant.

Major.
Brigade Major
15th Australian Infantry Brigade.

Copies to

- Sgt. HULSE
- 5th Aust. Div.
- 15th A.L.T.M.B.
- War Diary (3)

Volume XII

APPENDIX 25

15th Aust. Infantry Bde.

DAILY STRENGTH RETURN

22nd December, 1917.

265

UNIT	Actually with unit			In Hospital			Detached			Total Effect. Strgth.			INCREASE	DECREASE	EXCLUDES.
	Off.	O.R.	Ttl	Off	O.R.	Ttl	Off	O.R.	Ttl.	Off	O.R.	Ttl.			
15th Bde. Hqrs.	7	27	34	-	-	-	-	2	2	7	29	36			
15th A.I.T.M.B.	2	40	42	-	1	1	-	7	7	2	48	50			
15th M.G.Coy.	12	188	200	-	3	3	1	8	9	13	199	212		10 R. trans. 58th Bn	
57th Battalion	35	852	887	1	7	8	3	61	64	39	920	959		10 Off. ex Cadet Bn 2/Lt Cotton 20 R. ex Hosp.	1 O.R. evac C C S
58th Battalion	38	744	782	1	21	22	9	71	80	48	836	884		10 R. trans. from 15th M.G.Coy.	
59th Battalion	41	796	837	3	26	29	8	57	65	52	879	931		TOS 2 Off 1 OR Lt Rawson 2/Lt Callender	
60th Battalion	55	792	827	1	15	16	8	55	63	44	862	906		TOS Lt Wellington ex wdd. 2/Lt Chambers ex rfts	
TOTAL	170	3439	3609	6	73	79	29	261	290	205	3773	3978			

APPENDIX, 25

76

265

DETAILS OF DETACHED.

15th Bde. Hqrs.	Of	O	R	57 Battalion	Of	O	R	58 Battalion	Of	O	R	59 Battalion	Of	O	R	60 Battalion	Of	O	R
								A.F.C.	2			A.S.C.	2			A.S.C.			3
Leave	2			A.G.'s Office	1			Lt Focken				A.G.'s Office	1			A.G.'s Office			1
				A.S.C.	3			Lt Keating				Corps Hqrs	1			Camp Warden			1
				A.W.L.	1			Concert Party	2			Detention	5			Y.M.C.A.			1
				Detention	2			Anzac Hqrs	1			Camp Commandant	3			Concert Party			3
				" Paris	1			A.S.C.	2			Lt Toohey	3			Detention			7
				D.A.D.O.S.	1			A.W.L.	4			Div Duties	2			Leave	2		19
				Div. Duties	14			A.G.'s Office	1			Capt Lay	1			Lt Calder			
15th A.I.T.M.B.				Leave	24			Div Duties	14			Leave	6			Lt Tubb			
				Anzac Workshops	3			anz.Workshops	2			Major Kuring				Div Duties	1		7
Corps School	4			Supply Guard	1			Detention	9			Lieut Christian				Lt Davis			
Leave	2			Corps School	7			Leave	2			Reinforcemt Camp	1			Corps H.Q.			1
Awaiting D.C.M (London)	1			Lt White				Capt Loughnan				Arrest in London	1			Salvage			1
				Lt Falconer				Lt Tasker				Lieut Reid				Corps School	2		5
				5th Army Musketry				Supply Depot	5			A.I.F.H.Q..(Ind Army)	1			Lt Diamond			
				2/Lt Money	1			Corps School	2			Lieut Gamble				Lt Richards			
				2nd Army Musk.	1			2/Lt.Slaughter				Corps School	3			L.I.School			1
15th M.F.Coy.				L.M.F.School	1			Lt Davis				Capt Heron				Bombing School			1
Special Duty	1			Cookery School	1			Musketry(Eng)	1			L.I.School	1			2nd Army Sig Sch			1
Leave								Army School	2			Bombing School	2			" " Musket.	1		1
S.A.School								Lt Crawley				2/Lt Shiells				Lt Knight			
Transport Schl.								2/Lt Shiells				2nd Army Musketry	1			5th Army Musketry	1		2
A.S.C.								Farriery Schl	2			4th " "	1			Lt Allerdyce			
								Y.M.C.A.	1			5th " "	1			G.H.Q.I.C.School	1		1
								Senr.Off.Schl								Capt Arter			
								Mjr.DeRavin											
								Area Duties	2										
TOTAL					3		61		9										55

APPENDIX 25

77

265

UNIT	with unit		Actually			In Hospital			Detached			Total effect. strngth.			INCREASE	DECREASE	EXCLUDES.
	Off.	O.R.	Ttl.	Off.	O.R.	Ttl.	Off.	O.R.	Ttl.	Off.	O.R.	Ttl.					
15th Brigade H.Q.	7	28	35						1	1	7	29	36				
15th A.I.T.M.B.	2	44	46						3	3	2	47	49				
15th M.G. Coy.	11	185	196	3	3	3	10	13	14	198	212						
57th Battalion	34	931	965	6	6	6	67	73	40	1004	1044				6 O.R. evac CCS. 1 O.R. und. age.		
58th Battalion	40	760	801	1	19	20	8	63	49	843	892			10 O.R. from illegally absent.			
59th Battalion	38	803	841	3	23	26	10	60	51	886	937						
60th Battalion	35	800	835	3	19	22	7	50	45	869	914				1 P.R. SOS evac. Div. Area.		
TOTAL	167	3552	3719	7	70	77	34	254	208	3876	4084						

APPENDIX. 26

78

265

DETAILS OF DETACHED.

15th BDE.Hqrs	Off	O	R	57th Battalion	Off	O	R	58th Battalion	Off	O	R	59th Battalion	Off	O	R	69th Battalion	Off	O	R
Leave			1	A.G's Office			1	A.F.C.			2	A.W.L.			3	A.S.C.			4
				A.S.C.			3	Lt Focken				A-S-C-			2	A.G's Office			1
				A&W&L			6	Lt Keating				A.G's Office			1	Camp Warden			1
				Detention			2	Concert Party			2	Anzac H.Q.			1	Y.M.C.A.			1
				" Paris			1	Anzac H.Q.			1	Detention			3	Concert Party			3
				D.A.D.O.S.			1	A.S.C.			2	Camp Commdt			1	Detention			4
15th A.L.T.M.B.				Div. Duties			14	A.G's Office			1	Lt Toohey			1	Leave U.K.			2
Leave			2	Leave U.K.			23	Anzac Workshops			2	Div. Duties			1	Lt Calder			18
Awaiting BGM (London)			1	Mjr Aitchison				Div. Duties			14	Capt Lay			5	Lt Tubb			17
			3	2/Lt McDonald				Detention			9	Leave			5	Leave Galais			1
				Leave (Paris)			2	Leave U.K.			3	Mjr Kuring				Lt Stillman			
				Anzac Workshops			3	Lt Trengove			14	Lt Christian				Leave Rouen			1
				Supply Guard			1	Lt Tasker				Lt McPherson				Leave Boulogne			1
15th M.G.Coye				Schools.-				Cpt Loughnan				Lt Morrow				Salvage			1
Special Duty			1	Corps			4	Leave Paris			2	Lt Davies				Anzac H.Q.			1
Leave			1	2/Lt Grice				Supply Depot			5	Reinft.Camp			1	Div.Duties			1
Lt Richards			6	5th Army Musk.			1	Y.M.C.A.			2	A.I.F.H.Q.(Ind-ian Army)			1	Lt Davis			7
Corps School			1	2/Lt Money				Schools.-				Lt Gamble				Schools.-			
Lt Hutton			1	2nd Army Musk.			1	Musketry Eng.			1	Arrest(London)			1	Corps Gas			1
S.A.School			1	Army School			2	Army			5	Lt Reid				2nd Army Musk.			1
A.S.C.			2	Lt McCallum				2/Lt Shiells				Schools.-				Lt Knight			2
				German School			1	Lt Reynolds				Corps Gas			1	2nd Army			1
				L.M.G. B			2	Farriery			1	4th Army Musk.			1	Lt Bower			2
			3					Corps Gas			2	5th " "			1	Lt Allardyce			
			10					Lt Deane				G.H.Q.L.G.			1	German			3
												German			1	G.H.Q.L.G.			1
												2nd Army			1				
												Lt Blandford.			2				
TOTAL							6				8				10				7
							67				63				60				50

79 APPENDIX 26

app 27

15th AUSTRALIAN INFANTRY BRIGADE.

RETURN OF SICK WASTAGE FOR THE MONTH OF DECEMBER 1917.

UNIT.	DAY OF MONTH.																															TOTAL	DAILY AVERAGE.
	1	2	3	4	5	6	7	8	9	10	11	12	13	14	15	16	17	18	19	20	21	22	23	24	25	26	27	28	29	30	31		
57th Battalion	-	1	-	1	3	1	-	1	1	1	3	1	1	6	2	4	-	1	1	-	-	-	-	2	-	1	-	3	-	10	-	44	1.4
58th Battalion	-	-	-	-	-	-	-	2	4	2	4	4	-	2	-	-	-	1	-	1	12	1	-	5	-	-	2	2	1	-	-	43	1.38
59th Battalion	2	1	2	4	2	-	2	1	-	3	3	2	2	+	+	1	-	1	6	2	2	2	3	2	1	-	2	-	-	4	51	1.64	
60th Battalion	-	3	-	4	2	3	3	2	1	1	2	1	2	-	-	-	3	2	-	2	-	-	2	2	-	1	2	5	3	1	1	48	1.54
15th M.G.Coy.	-	-	-	-	-	-	-	1	1	1	-	-	-	-	-	-	-	-	-	-	1	-	-	1	1	-	-	-	-	-	6	.19	
15th A.I.T.M.B.	-	-	-	-	1	-	-	-	-	-	-	1	-	-	-	-	-	-	-	-	-	-	-	-	-	-	-	-	-	-	2	.06	
15th Bie.H.Q.	-	-	-	-	-	-	-	-	-	-	-	-	-	-	-	-	-	-	-	-	-	-	-	-	-	-	-	-	-	-	-	-	
TOTAL	2	5	2	9	8	4	5	7	7	8	12	9	5	9	2	5	3	4	7	5	15	3	5	12	1	3	4	12	4	11	5	194	6.2

APPENDIX. 27